

# CONTENTS

- DA01 - Cover Page
- DA02 - Ground Floor Public Domain
- DA03 - L1 Private + Communal Courtyards
- DA04 - L2 Communal Courtyard
- DA05 - Sections
- DA06 - Planting Strategy

## Landscape Design Principles:

### Reinforce connections to the Kirrawee Village + Kirrawee Train Station

- Provide a clear and accessible route along Flora St from the development site to Kirrawee Village and to Kirrawee Train Station (4min walk)

### Protect the ecologically significant Flora/ Fauna

- Protect the sites' important ecological role within the region
- Retain the existing significant vegetation where possible (SW corner of site)
- Provide minimum 40 x 20m water body as required by the current approval

### Respond to the site's history

- Provide reference to the sites' former use as a brick pit and its ecological significance through interpretation within the public domain

### Provide an active and vibrant public domain

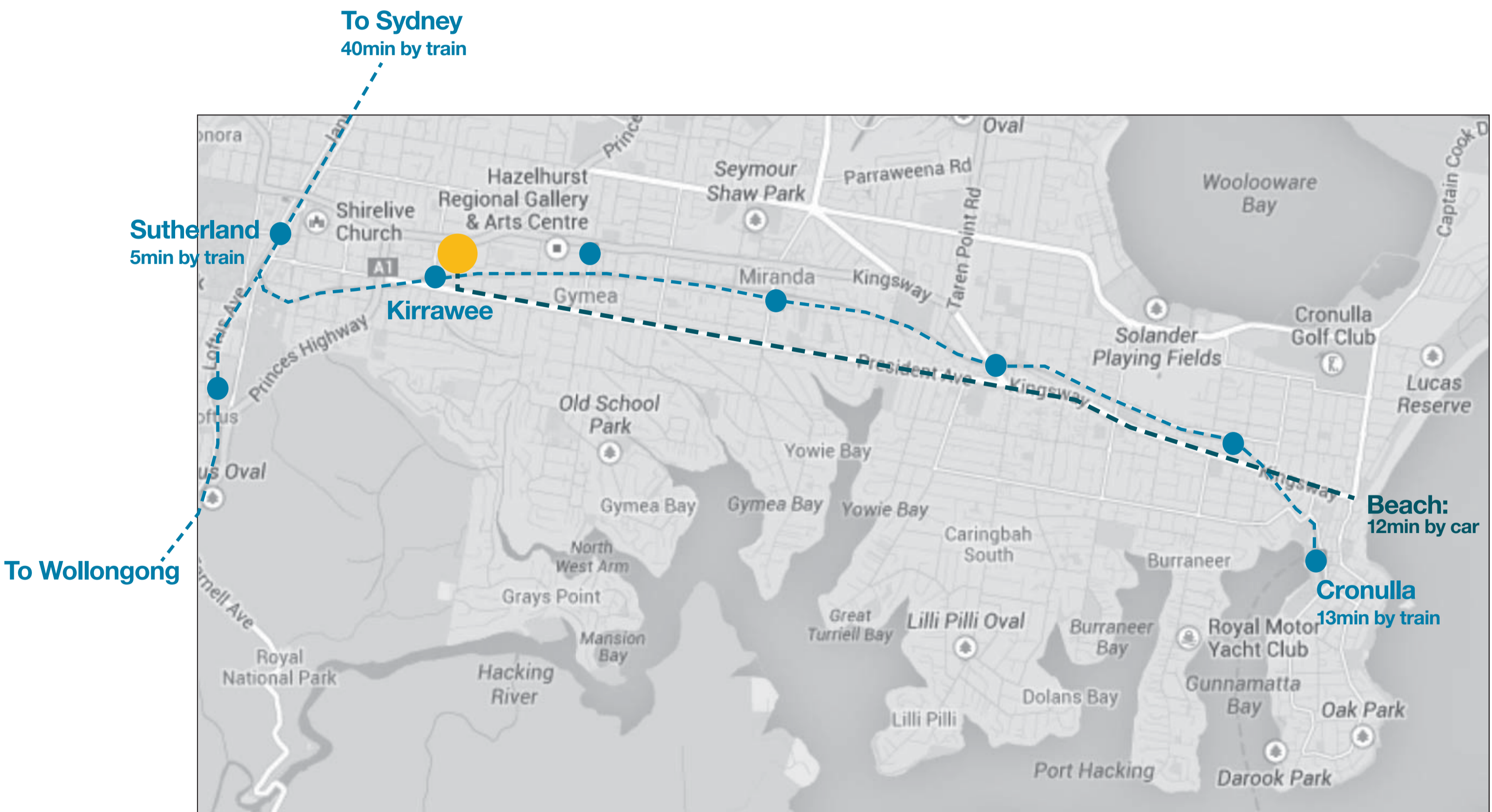
- Encourage spill-out into the public domain from active retail spaces
- Provide opportunity for variety of users to engage in the public domain

### Provide a high quality and comfortable environment for pedestrians

- Upgrade streets to provide comfortable and accessible pedestrian paths, with shade and buffer planting from the street
- Provide internal streets and lanes as public mid-block connections

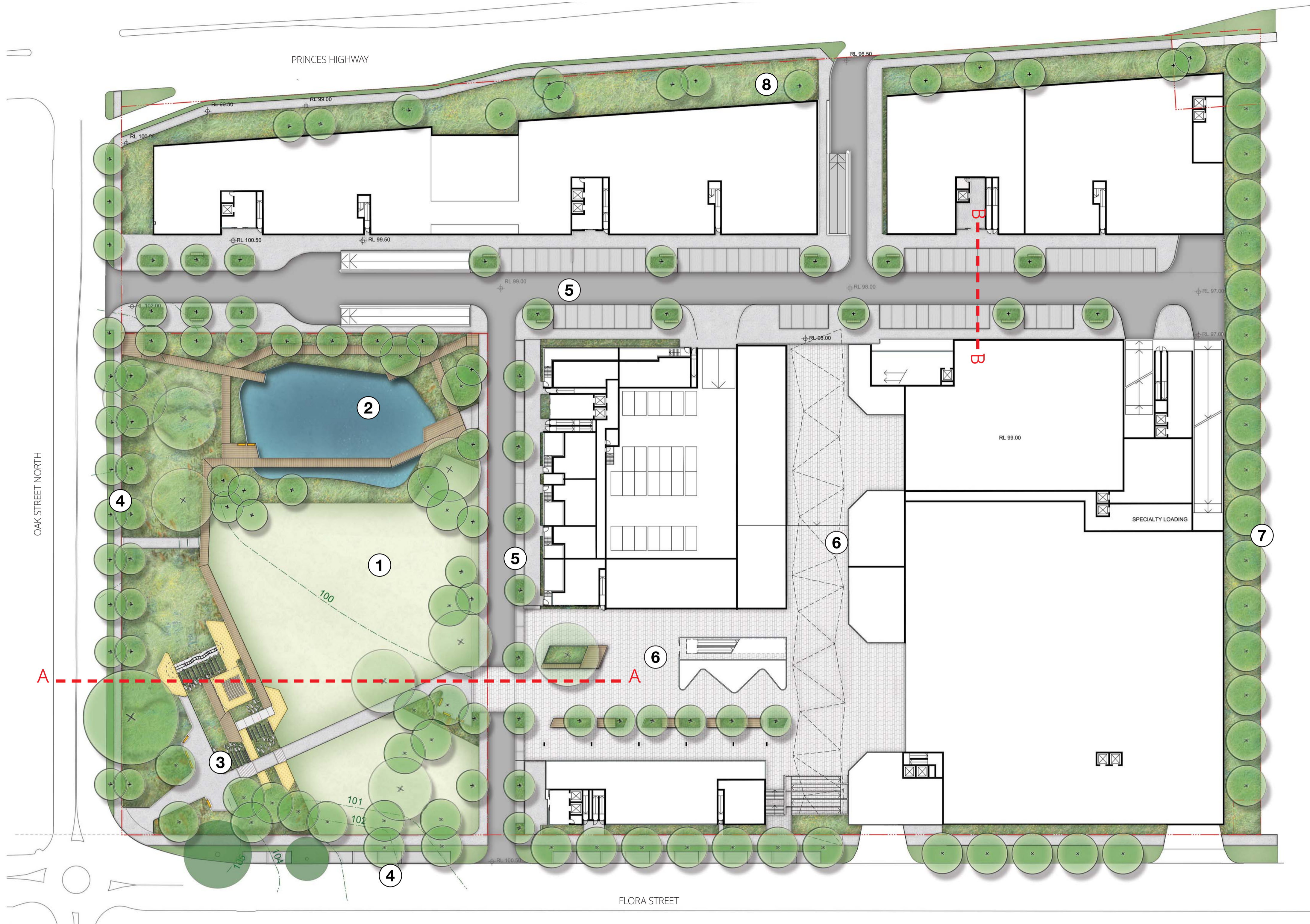
### Provide a high quality landscape for residents

- Provide communal courtyards that allow a range of different uses
- Ensure adequate screen planting to private terraces



Location and connections





## KEY

### 1 New public park 9000m<sup>2</sup>.

- Regrade to RL 100.
- Open turf area located to capture northern sun aspect.
- Native trees (Angophora and Eucalyptus species) and native understory planting.

### 2 Water body 40 x 30m.

- Perimeter raised deck and native grass planting.

### 3 New playground.

- Located to be visually connected to the streets and the plaza.
- Play elements incorporated into the graded bank.
- New pedestrian link from plaza to the corner of Flora St and Oak Rd.

### 4 Upgraded Streets:

- New insitu concrete footpath with new turf/ planted verge.
- Tree Planting (Eucalyptus Sp. + Cupaniopsis anarcardioides).
- New on street car parking to Flora St

### 5 Internal Streets.

- Asphalt roadway with concrete unit paved footpaths and parking bays
- Tree planting in raised beds 600mm high (+ 600mm setback), with incorporated seat.

### 6 New plaza and pedestrian lane.

- Concrete unit paved surface.
- Linear furniture/ planter elements.
- Potential for 'brickworks' interpretation to be incorporated through pavement inlay

### 7 Mass planted setback.

- Native palette of trees, shrubs and understory.

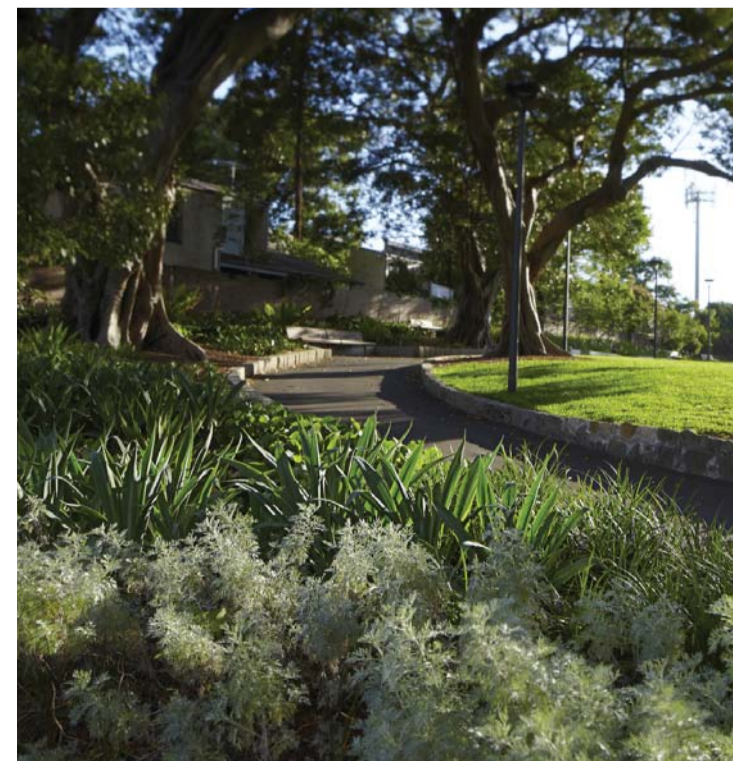
### 8 Planted setback.

- Low understory planting
- Upright formed trees to provide visual connection to showrooms.

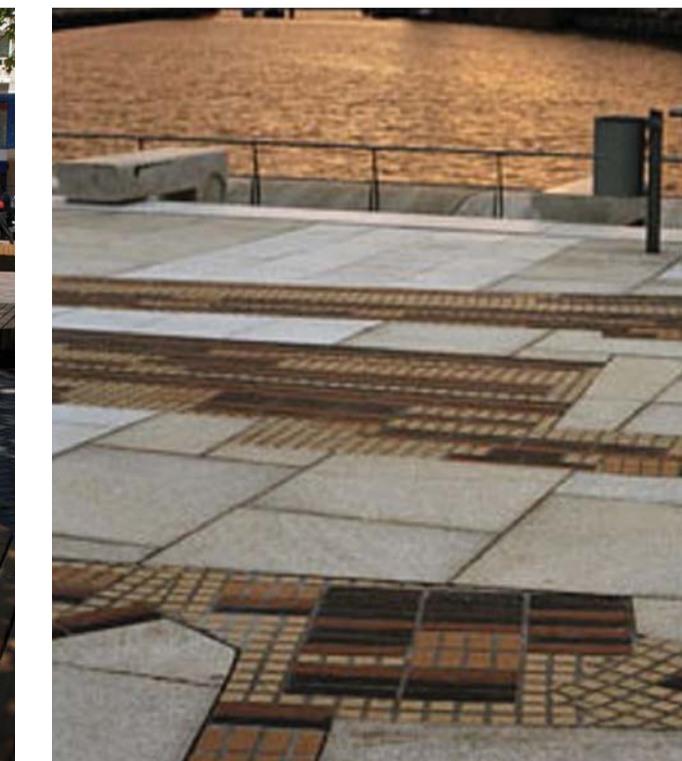
Precedent Images - Play



- Park



- Plaza



# Kirrawee Brick Pit, Kirrawee

ASPECT Studios™

Client: **South Village Pty Ltd**  
Architect: **Turner**

Drawn: **TH**  
Checked: **NB**

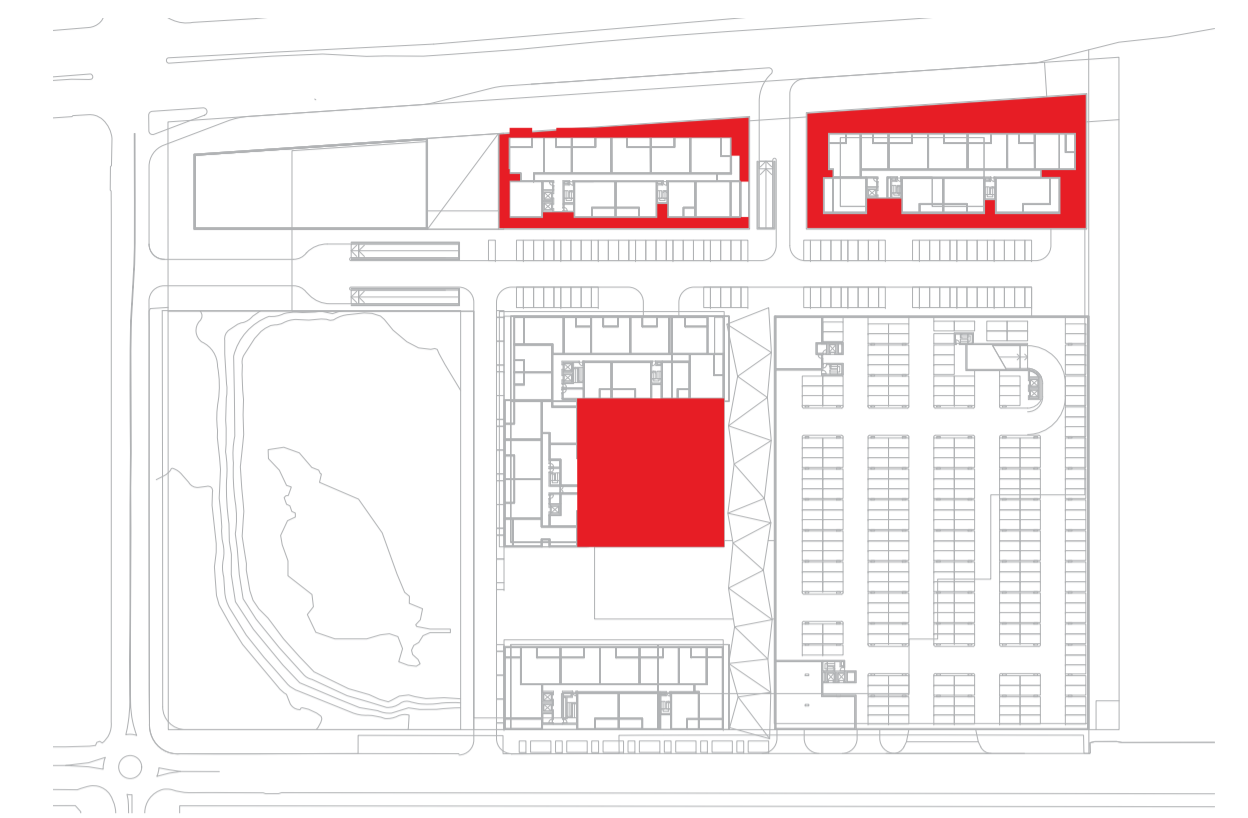
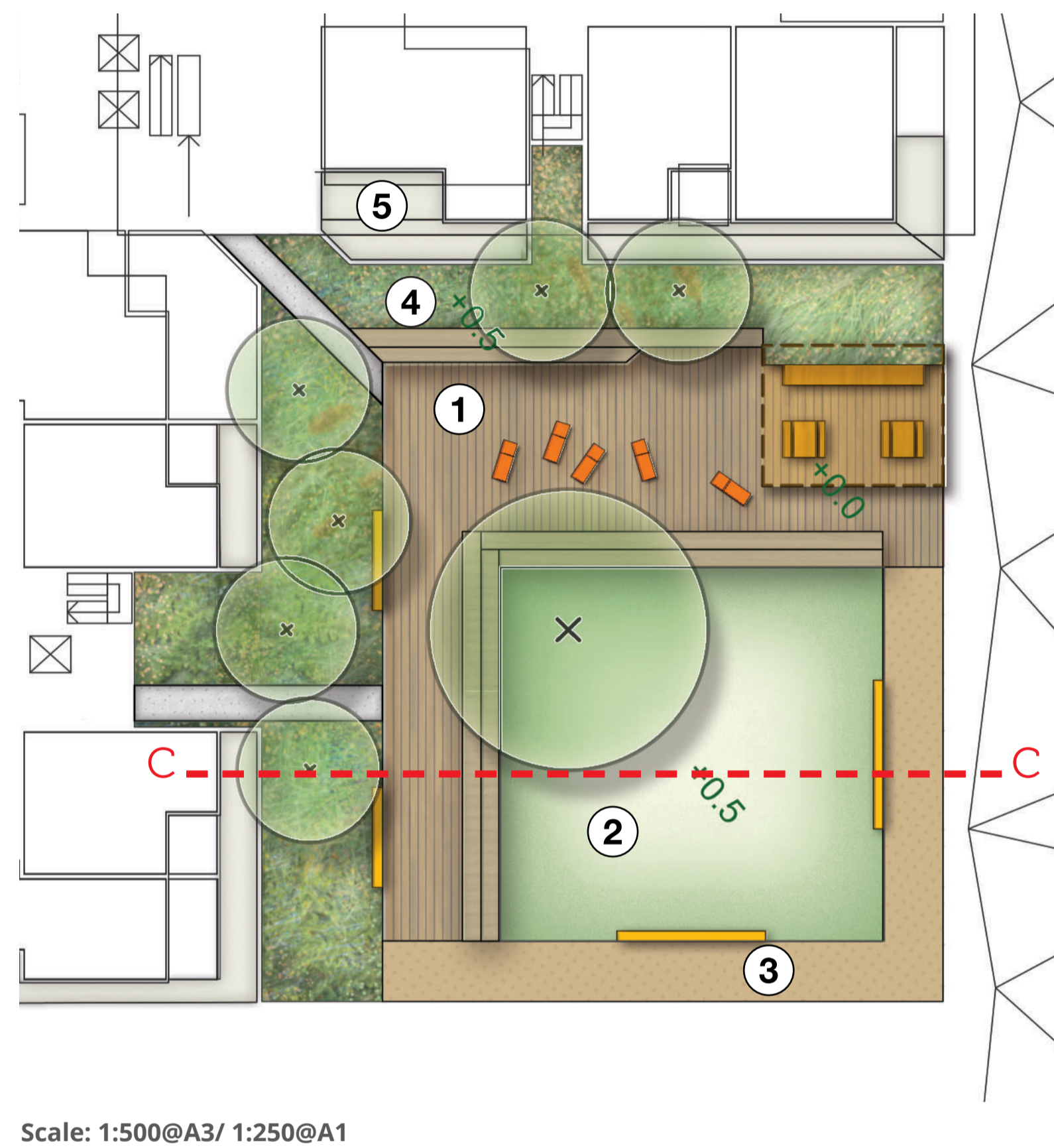
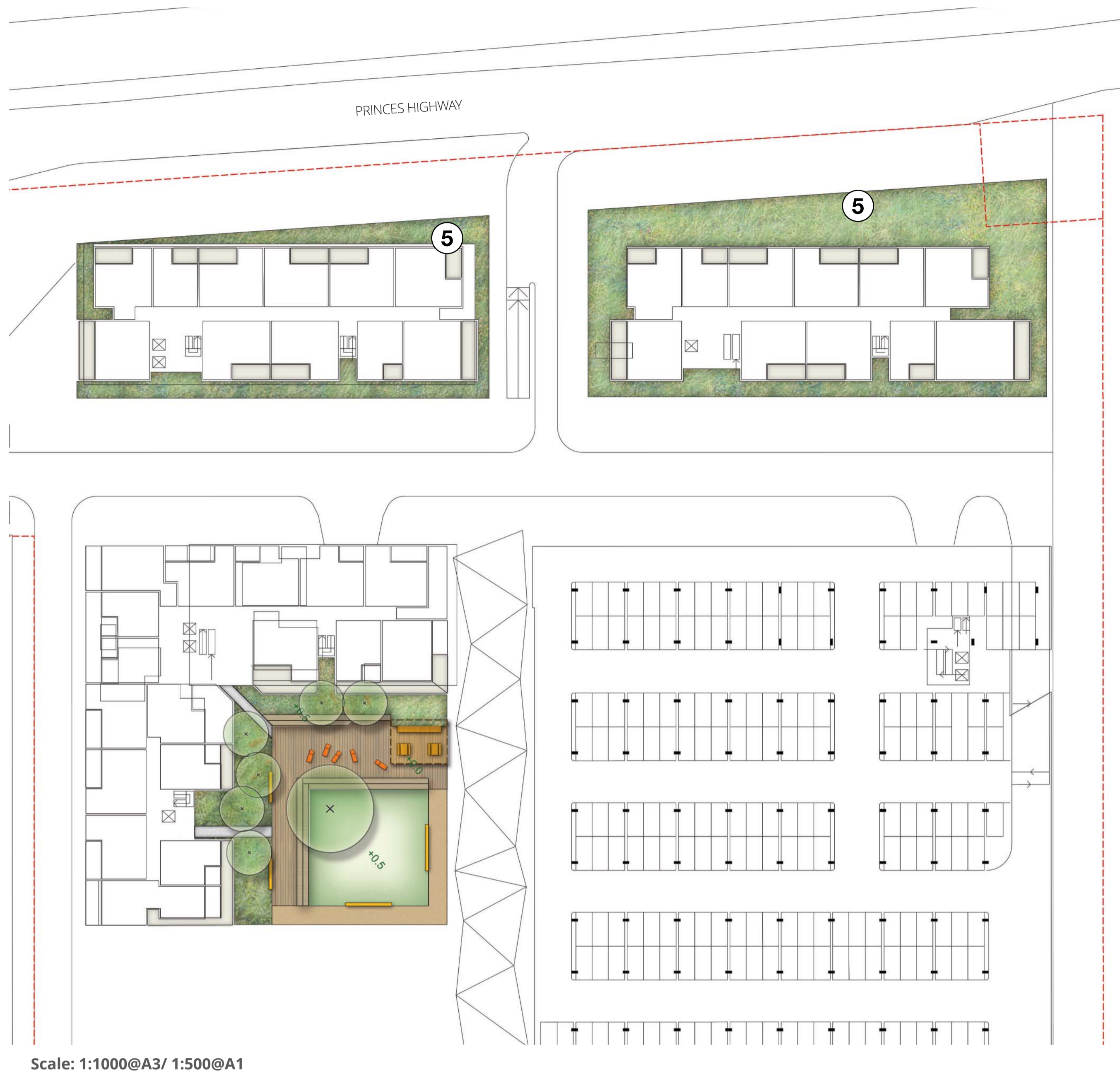
Scale: **1:1000 @A3/ 1:500 @ A1**  
Date: **November 2013**

Landscape DA\_Ground Floor Public Domain

0 10 20 30 40m



Dwg no.: **13066-DA02**  
Rev: **C**



Scale: n/a

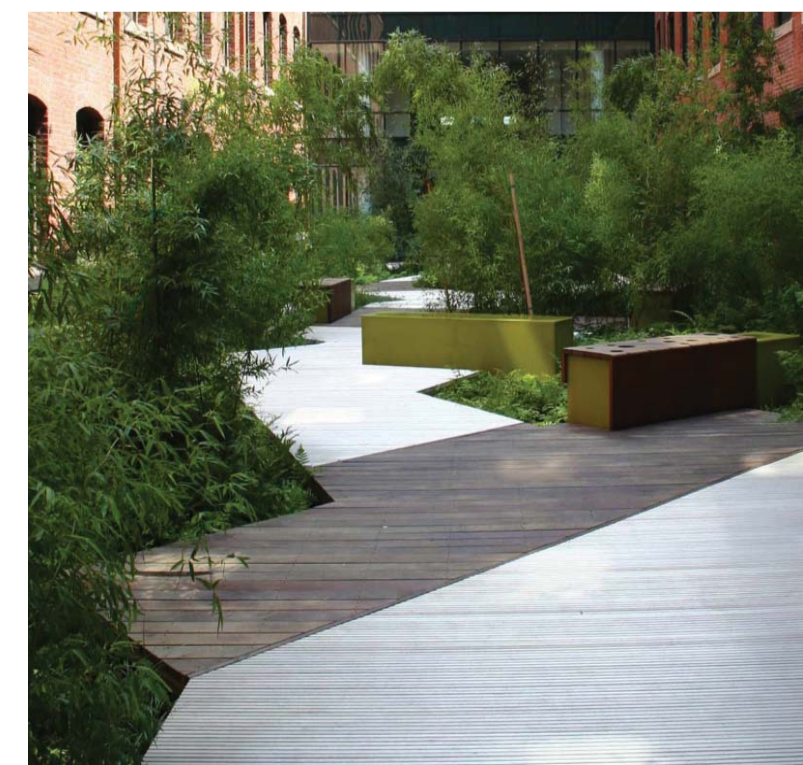
#### KEY

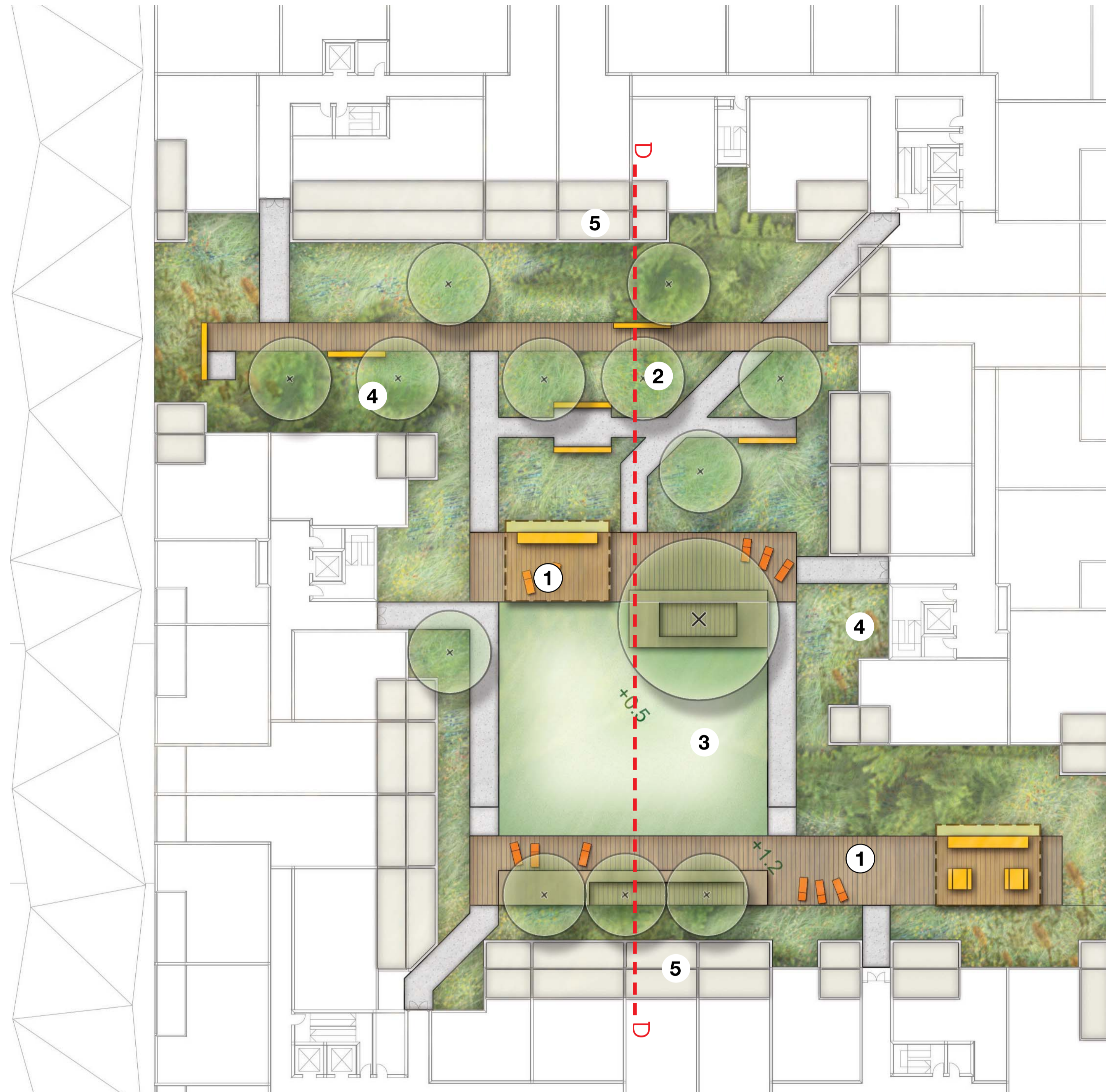
- 1 Timber sun deck**
  - Flush with path (500mm setdown in slab)
  - Lounges and seating edges to deck and planters
  - BBQ area with shade canopy
- 2 Raised turf area**
  - Located to capture northern sun
  - Raised seating edge- views to plaza
- 3 Perimeter setback**
  - Gravel edge to courtyard perimeter
  - Glass balustrade allows views to Plaza
- 4 Perimeter planting**
  - 500-1000mm soil depth
  - Mix of natives and exotics
  - Small trees, shrubs and low understory screen planting to apartments
- 5 Private courtyards**
  - Courtyards with screen planting

Precedent Images - sun decks

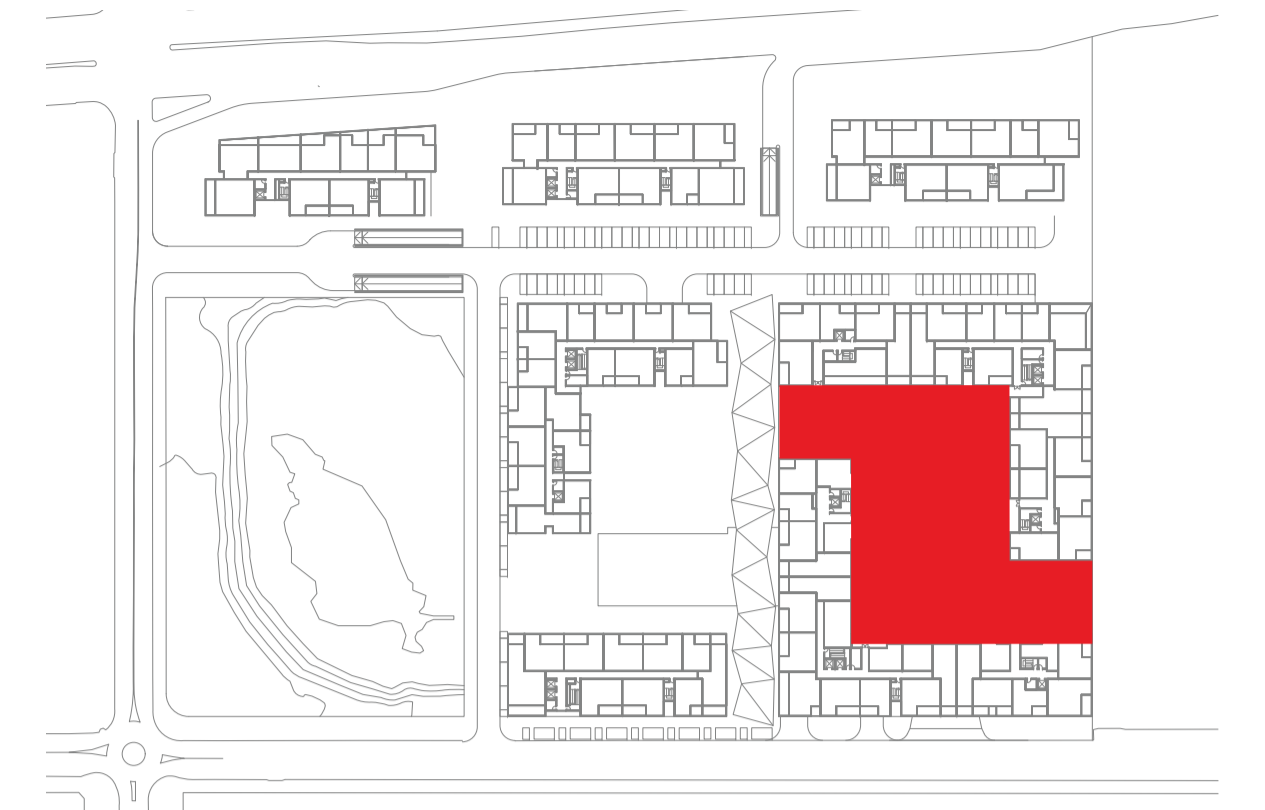


- Garden/ screen planting





Scale: 1:500@A3/ 1:250@A1

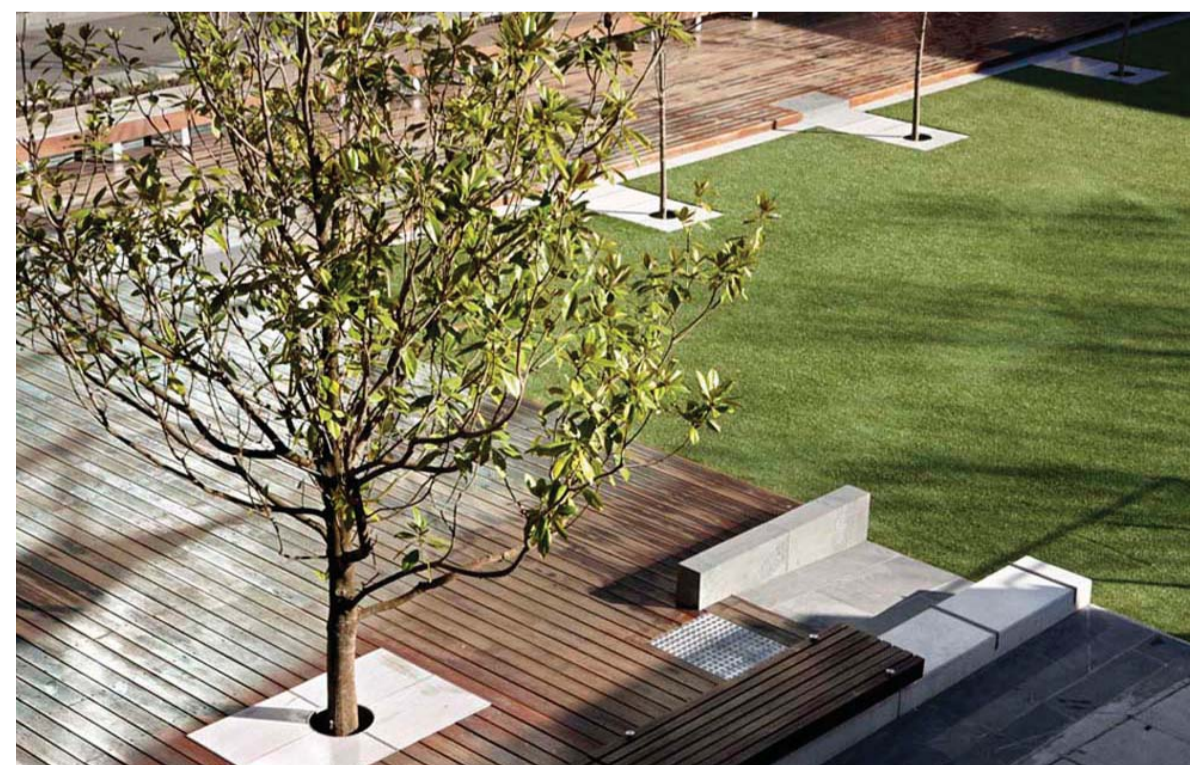


Scale: n/a

#### KEY

- 1 Timber sun decks**
  - Flush with path; stepping up to form seating edges
  - Lounges and seating edges to deck and planters
  - BBQ areas with shade canopy
- 2 Garden zone**
  - Path network through lush, mass planting
  - Small seating and gathering 'hooks'
  - Shade tolerant, rainforest planting
- 3 Raised turf area**
  - Located to capture northern sun
- 4 Perimeter planting**
  - Mix of natives and exotics
  - Small trees, shrubs and low understory screen planting to apartments
- 5 Private courtyards**
  - Courtyards with screening to communal areas

Precedent Images - sun decks



- Garden/ screen planting





OAK STREET  
NORTH

PLAYGROUND

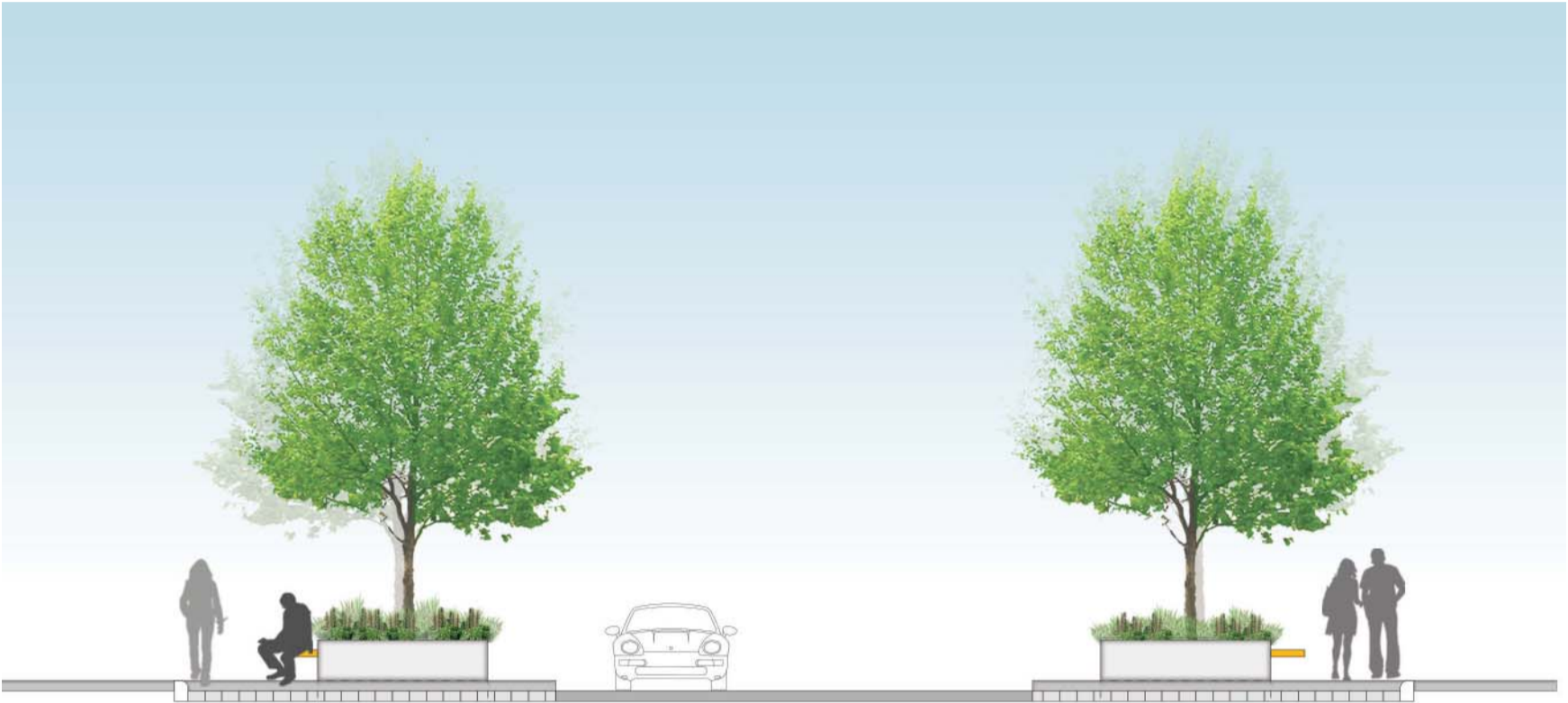
OPEN TURF

INTERNAL STREET

NEW PLAZA / PEDESTRIAN LANE

Section A

1:200



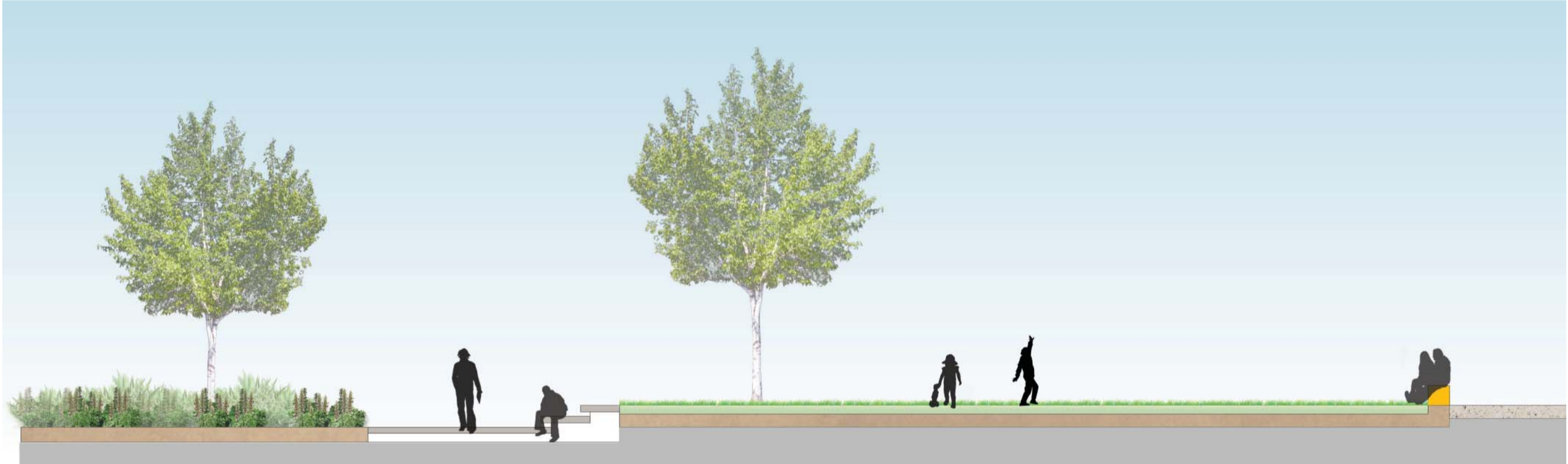
PARKING BAYS

INTERNAL STREET

RAISED PLANTER WITH SEATING

Section B

1:100



PERIMETER PLANTING

TIMBER SUN DECK

RAISED TURF AREA

GRAVEL EDGE

Section C

1:100



PERIMETER PLANTING

PATH NETWORK THROUGH PLANTING

TIMBER SUN DECK

RAISED TURF AREA

TIMBER SUN DECK

PERIMETER PLANTING

Section D

1:100



Public Park and Streets:

Botanic Name	Common Name	Native/ Exotic	Estimated Pot Size	Spacing
Trees				
<i>Angophora costata</i>	Smooth Barked Apple			
<i>Eucalyptus punctata</i>	Grey Gum			
<i>Eucalyptus haemastoma</i>	Scribbly Gum			
<i>Waterhousia floribunda</i>	Weeping Lily Pily			
<i>Tristaniopsis laurina</i>	Water Gum			
<i>Melaleuca quinquenervia</i>	Broad Leaf Paperbark			
<i>Banksia integrifolia</i>	Coast Banksia			
Low Shrubs, Groundcovers and Climbers				
<i>Lomandra longifolia</i>	Mat Rush			
<i>Boronia ledifolia</i>	Sydney Boronia			
<i>Correa alba</i>	Coast Correa			
<i>Clematis aristata</i>	Old Man's Beard			
<i>Dillwynia floribunda</i>	Eggs and Bacon			
<i>Hibbertia scandens</i>	Snake Vine			
<i>Ricinocarpos pinifolius</i>	Wedding Bush			
<i>Blandfordia nobilis</i>	Christmas Bells			
<i>Carex appressa</i>	Tall Sedge			
<i>Dianella caerulea</i>	Blue Flax Lily			
<i>Juncus continuus</i>	Rush			
<i>Doryanthes excelsa</i>	Gymea Lily			
<i>Banksia ericifolia</i>	Heath Banksia			

Internal Streets and Plaza Planting

Botanic Name	Common Name	Native/ Exotic	Estimated Pot Size	Spacing
Trees				
<i>Cupaniopsis anacardioides</i>	Tuckeroo			
<i>Elaeocarpus reticulatus</i>	Blueberry Ash			
<i>Waterhousia floribunda</i>	Weeping Lily Pilly			
<i>Melia azedarach</i>	White Cedar	Native		
Low Shrubs, Groundcovers				
<i>Viola hederacea</i>	Native Violet	Native	200mm	300mm
<i>Blechnum cartilagineum</i>	Gristle Fern	Native	25L	400mm
<i>Arthropodium cirratum</i>	Renga Renga Lily	Exotic	25L	500mm
<i>Arthropodium cirratum</i>	Snake Vine	Native		
<i>Viburnum odoritissium</i>	Sweet Viburnum	Exotic	45L	500mm
<i>Dietes Robinsoniana</i>	Wedding Lily	Exotic		
<i>Westringia fruticosa</i>	Coast Rosemary	Native		
<i>Scaevola cvs</i>	Fan Flower	Native		
<i>Acanthus mollis</i>	Oyster Plant	Exotic		
<i>Dianella caerulea</i>	Blue Flax Lily			
<i>Boronia ledifolia</i>	Sydney Boronia			
<i>Hibbertia scandens</i>	Guinea Flower			

Private courtyards:

Botanic Name	Common Name	Native/ Exotic	Estimated Pot Size	Spacing
Trees/ Tree ferns				
<i>Lagerstroemia indica 'Natchez'</i>	White Crepe Myrtle	Exotic		
<i>Banksia integrifolia</i>	Coast Banksia			
<i>Backhousia myrtifolia</i>	Cinnamon Myrtle	Native		
<i>Glochidion ferdinandii</i>	Cheese Tree	Native		
<i>Waterhousia floribunda</i>	Weeping Lily Pilly	Native		
<i>Dicksonia antarctica</i>	Soft Tree Fern			
<i>Cyathea australis</i>	Rough Tree Fern			
Low Shrubs, Groundcovers and Climbers				
<i>Philodendron 'Xanadu'</i>	Xanadu	Exotic	25L	500mm
<i>Ajuga reptans 'Caitlans Giant'</i>	Bugleweed	Exotic	200mm	300mm
<i>Viola hederacea</i>	Native Violet	Native	200mm	300mm
<i>Iris x germanica</i>	Bearded Iris	Exotic	200mm	300mm
<i>Asplenium australasicum</i>	Birds Nest Fern			
<i>Blechnum nudum</i>	Fishbone water fern			
<i>Hymenocallis speciosa</i>				
<i>Hardenbergia violacea</i>				
<i>Correa alba</i>	Coast Correa			
<i>Acanthus mollis</i>	Oyster Plant			
<i>Alpinia caerulea</i>	Native Ginger			
<i>Helichrysum petiolare</i>	Licorice Plant			
<i>Raphiolepis indica</i>	Indian Hawthorn			

Screening to adjacent properties:

Botanic Name	Common Name	Native/ Exotic	Estimated Pot Size	Spacing
Trees				
<i>Glochidion ferdinandii</i>	Cheese Tree	Native	300mm	1000mm
<i>Hymenosporum flavum</i>	Native Frangipana	Native		
<i>Elaeocarpus reticulatus</i>	Blueberry Ash	Native		
Low Shrubs, Groundcovers and Climbers				
<i>Hibbertia scandens</i>	Snake Vine	Native	25L	500mm
<i>Blechnum nudum</i>	Fishbone water fern	Exotic	200mm	300mm
<i>Viola hederacea</i>	Native Violet	Native	200mm	300mm
<i>Dianella caerulea</i>	Lovers Twine	Exotic	200mm	300mm
<i>Hardenbergia violacea</i>				

