





1 BUILDING 4 NORTH ELEVATION 75W - APPROVED
1:100



2 BUILDING 4 NORTH ELEVATION - MOD 2
1:100

Revisions		Description	Ver	App'd
No.	Date			
A	10/06/12	WORK IN PROGRESS		
B	20/12/13	COMPARISON 75W + MOD 2		

Key

Client
Stockland Development Division

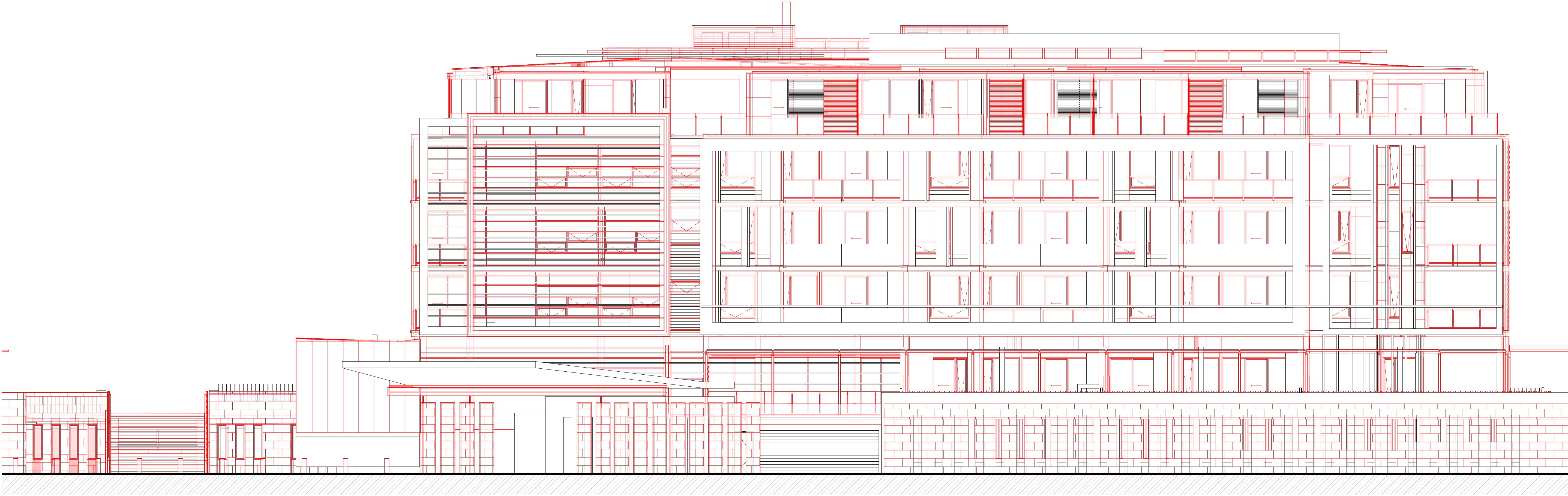
Architect
AJ+C
ALLEN JACK COTTER
79 Myrtle Street Chippendale NSW 2008 AUSTRALIA
ph +61 2 9311 8222 fx +61 2 9311 8200
ABN 53 003 782 250

Project
Cardinal Freeman Village
137 Victoria Street
ASHFIELD
NSW
Proj. No.
12018

Drawing Title
BUILDING 4 NORTH ELEVATION 1

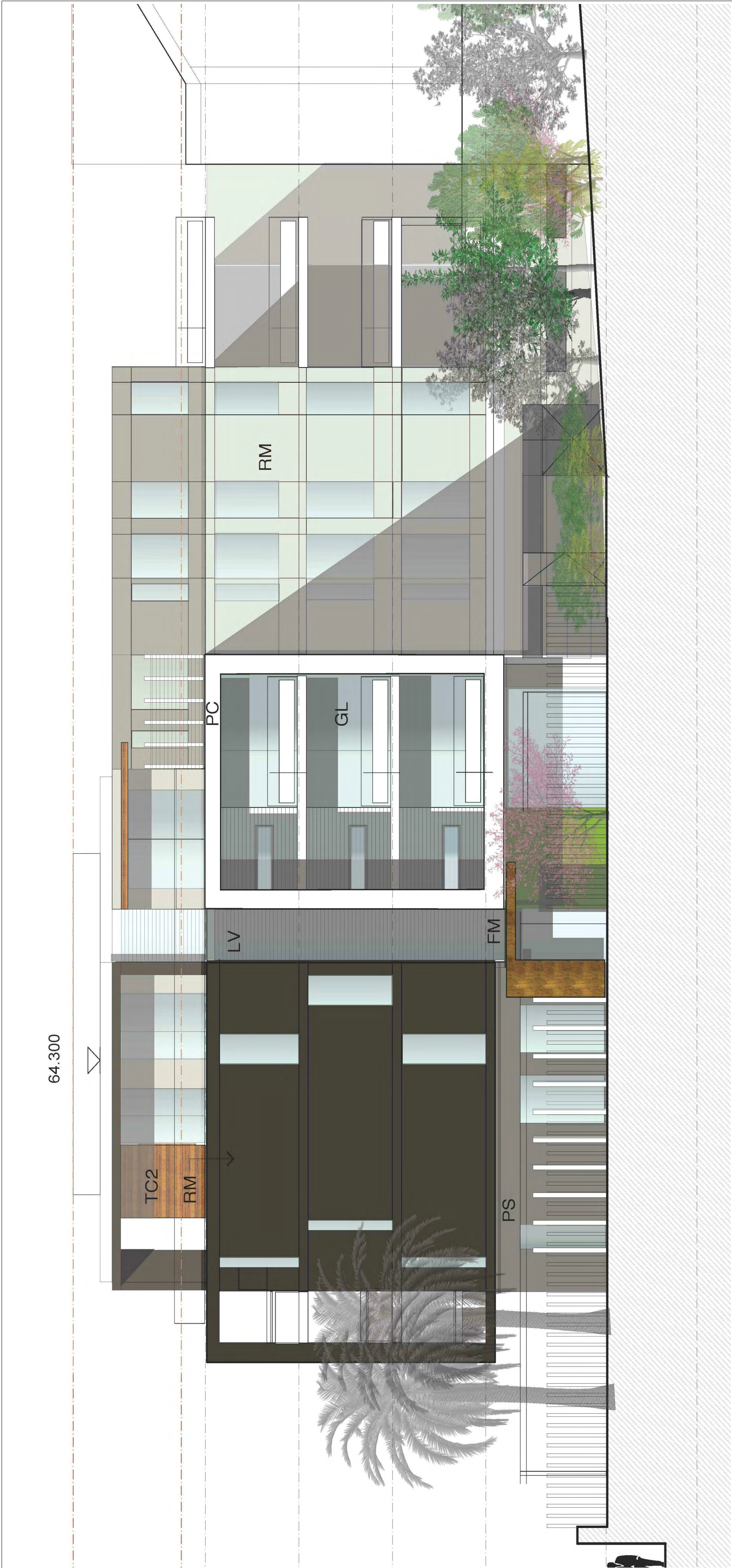
Scale
1:100 @A1
Drawing No.
C3111
Issue
B

NOT FOR CONSTRUCTION



**BUILDING 4 NORTH ELEVATION
COMPARISON OVERLAY**
1:100

	<div>Revisions</div> <table><tr><th>No.</th><th>Date</th><th>Description</th><th>Ver</th><th>App'd</th></tr><tr><td>A</td><td>100612</td><td>WORK IN PROGRESS</td><td></td><td></td></tr><tr><td>B</td><td>201213</td><td>COMPARISON 75W + MOD 2</td><td></td><td></td></tr></table>	No.	Date	Description	Ver	App'd	A	100612	WORK IN PROGRESS			B	201213	COMPARISON 75W + MOD 2			<div>Key</div>	<div>Client</div> <div>Stockland Development Division</div>	<div>Architect</div> <div><div>AJ+C</div><div>ALLEN JACK+COTTER</div><div>79 Myrtle Street Chippendale NSW 2008 AUSTRALIA</div><div>ph +61 2 9311 8222 fx +61 2 9311 8200</div><div>ABN 53 003 782 250</div></div>	<div>Project</div> <div>Cardinal Freeman Village</div> <div>137 Victoria Street</div> <div>ASHFIELD</div> <div>NSW</div> <div>Proj. No.</div> <div>12018</div>	<div>Drawing Title</div> <div>BUILDING 4 NORTH ELEVATION 2</div>	<div>Scale</div> <div>1 : 100 @A1</div> <div>Drawing No.</div> <div>C3112</div> <div>Issue</div> <div>B</div>	<div>NOT FOR CONSTRUCTION</div>
No.	Date	Description	Ver	App'd																			
A	100612	WORK IN PROGRESS																					
B	201213	COMPARISON 75W + MOD 2																					



BUILDING 4 WEST ELEVATION 75W - APPROVED

1:100

1

Key



BUILDING 4 WEST ELEVATION - MOD 2

1:100

2



BUILDING 4 WEST ELEVATION COMPARISON OVERLAY

1:100

3

Issue

B

Revisions	No.	Date	Description	Ver	App'd
A	100612	WORK IN PROGRESS			
B	201213	COMPARISON 75W + MOD 2			

Client
Stockland Development Division

Architect
AJ+C
ALLEN JACK COTTIER
79 Myrtle Street Chippendale NSW 2008 AUSTRALIA
pl +61 2 9311 8222 fx +61 2 9311 8200
ABN 53 003 782 250

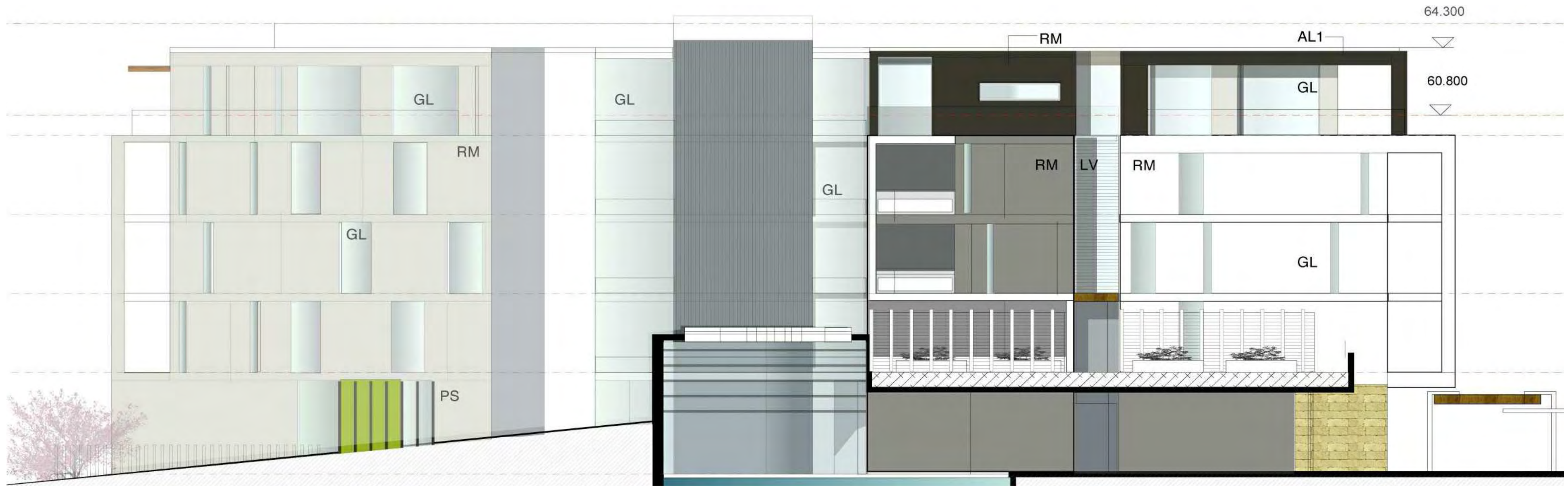
Project
Cardinal Freeman Village
137 Victoria Street
ASHFIELD
NSW
Proj. No.
12018

Drawing Title
BUILDING 4 WEST ELEVATION

Scale
1 : 100 @A1

Drawing No.
C3113

NOT FOR CONSTRUCTION



4 BUILDING 4 SOUTH ELEVATION 75W - APPROVED
1:100



1 BUILDING 4 SOUTH ELEVATION - MOD 2
1:100

Revisions		Description	Ver	App'd
No.	Date			
A	100612	WORK IN PROGRESS		
B	201213	COMPARISON 75W + MOD 2		

Key

Client
Stockland Development Division

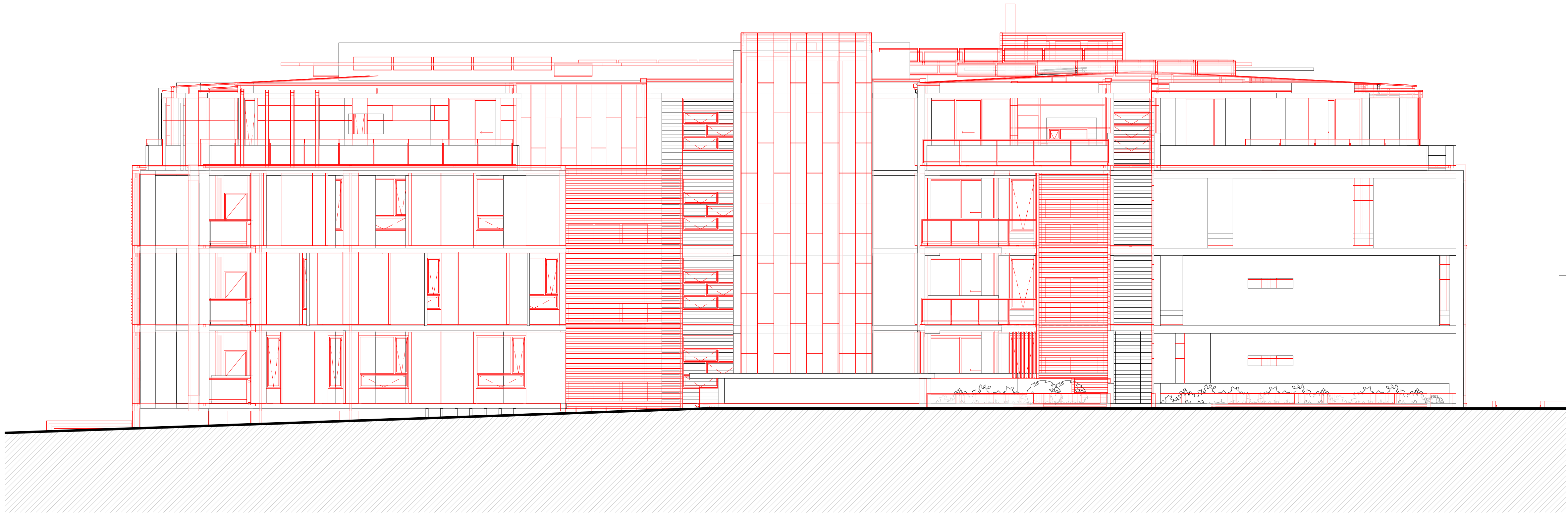
Architect
AJ+C
ALLEN JACK COTTIER
79 Myrtle Street Chippendale NSW 2008 AUSTRALIA
ph +61 2 9311 8222 fx +61 2 9311 8200
ABN 53 003 782 250

Project
Cardinal Freeman Village
137 Victoria Street
ASHFIELD
NSW
Proj. No.
12018

Drawing Title
BUILDING 4 SOUTH ELEVATION 1

Scale
1:100 @A1
Drawing No.
C3114
Issue
B

NOT FOR CONSTRUCTION



1 BUILDING 4 SOUTH ELEVATION
COMPARISON OVERLAY
1 : 100

	Revisions				Key	Client	Architect	Project	Drawing Title	Scale	Drawing No.	Issue	
	No.	Date	Description	Ver									App'd
	A	100612	WORK IN PROGRESS										
	B	201213	COMPARISON 75W + MOD 2			Stockland Development Division	<div>AJ+C</div> <div>ALLEN JACK+COTTER</div> <div>79 Myrtle Street Chippendale NSW 2008 AUSTRALIA ph +61 2 9311 8222 fx +61 2 9311 8200 ABN 53 003 782 250</div>	Cardinal Freeman Village 137 Victoria Street ASHFIELD NSW Proj. No. 12018	BUILDING 4 SOUTH ELEVATION 2	1 : 100 @A1	C3115	B	
NOT FOR CONSTRUCTION													