

Attention: Ms Sally Munk  
Department of Planning and Infrastructure  
GPO Box 39  
SYDNEY  
NSW 2001

Dear Ms Munk

**Re: Exhibition of Environmental Assessment for Integrated Residential and Tourist Development, Comberton Grange, Nowra (06\_0135).**

Thank you for the opportunity to comment on the applicant's address of submissions to MP 06\_0135 regarding the Integrated Residential and Tourist Development at Comberton Grange.

The "Comberton Grange" property is separated from Currambene Creek by Crown reserve 78755 for Public Recreation (the reserve) (fig 1). The reserve is devolved to Shoalhaven City Council (SCC) for care, control and management.

Crown Lands was concerned with the potential development of formal recreation facilities such as paths and rest areas within the reserve, the landscaping of the reserve, and also the planting of non-native flora within the reserve.

In the response to Submissions - Preferred Project Report (Final) the applicant has stated:

- The applicant/developer will inform Shoalhaven City Council and Crown Lands of any activities proposed within the reserve, and
- The detailed Landscape Design of the creek corridor will be submitted to Shoalhaven City Council at the development application stage.

Crown Lands is satisfied with this response from the applicant.

Any DA by a third party on a Crown reserve managed by a council as trust manager must obtain landowner's consent to lodgement from Crown Lands prior to lodgement with the council. More information on this process can be found at: [http://www.lpma.nsw.gov.au/\\_data/assets/pdf\\_file/0020/180227/frm\\_loc\\_locapp.pdf](http://www.lpma.nsw.gov.au/_data/assets/pdf_file/0020/180227/frm_loc_locapp.pdf); the documents may be submitted digitally on CD / DVD or via web address.

Please contact me if you require further information or clarification.

Yours sincerely



Helen Wheeler  
Natural Resource Project Officer  
Crown Lands

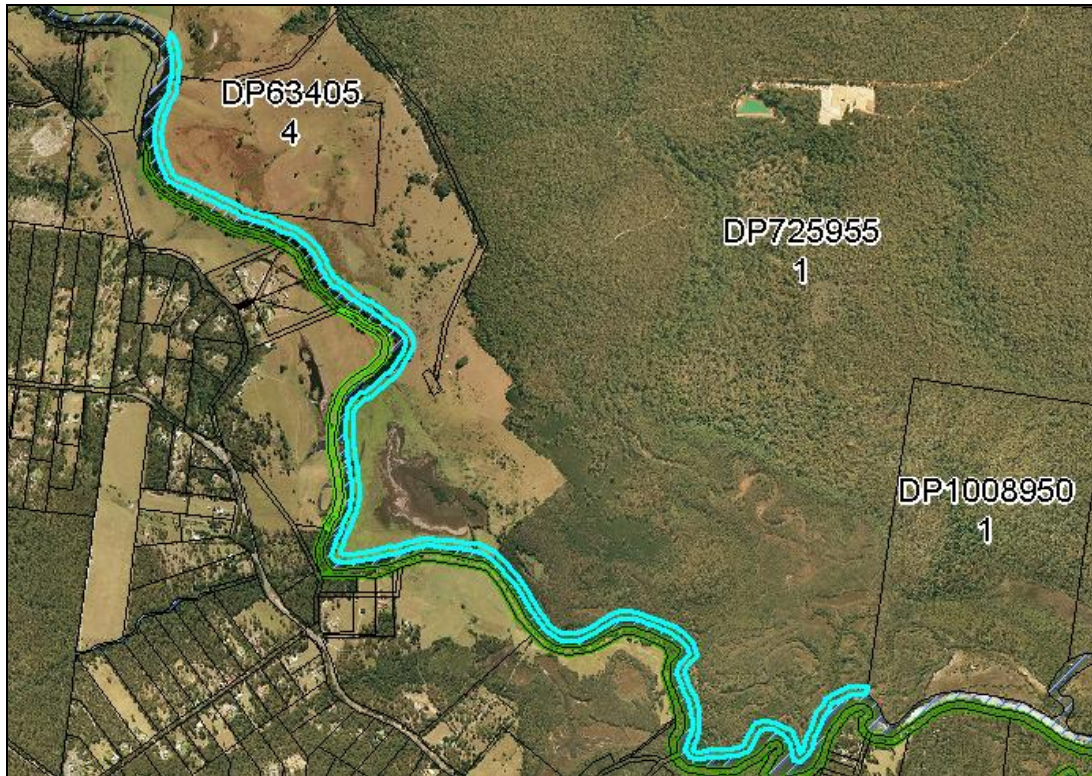


Fig 1: Crown reserve 78755 for Public Recreation adjacent to the proposed development and the Currambene Creek is outlined in light blue. The reserve on both sides of the Creek is under the care control and management of SCC.

Catchment and Lands  
5 O'Keefe Avenue  
Nowra NSW 2541

PO Box 309  
Nowra NSW 2541  
02 44289100

ABN 42 860 678 701 | [www.crownlands.nsw.gov.au](http://www.crownlands.nsw.gov.au)

**PLEASE NOTE: The Nowra office counter hours are  
8.30am to 1 pm weekdays.**

Appointments during business hours (8.30am to 4.30pm)  
can be arranged by phoning (02) 4428 9100