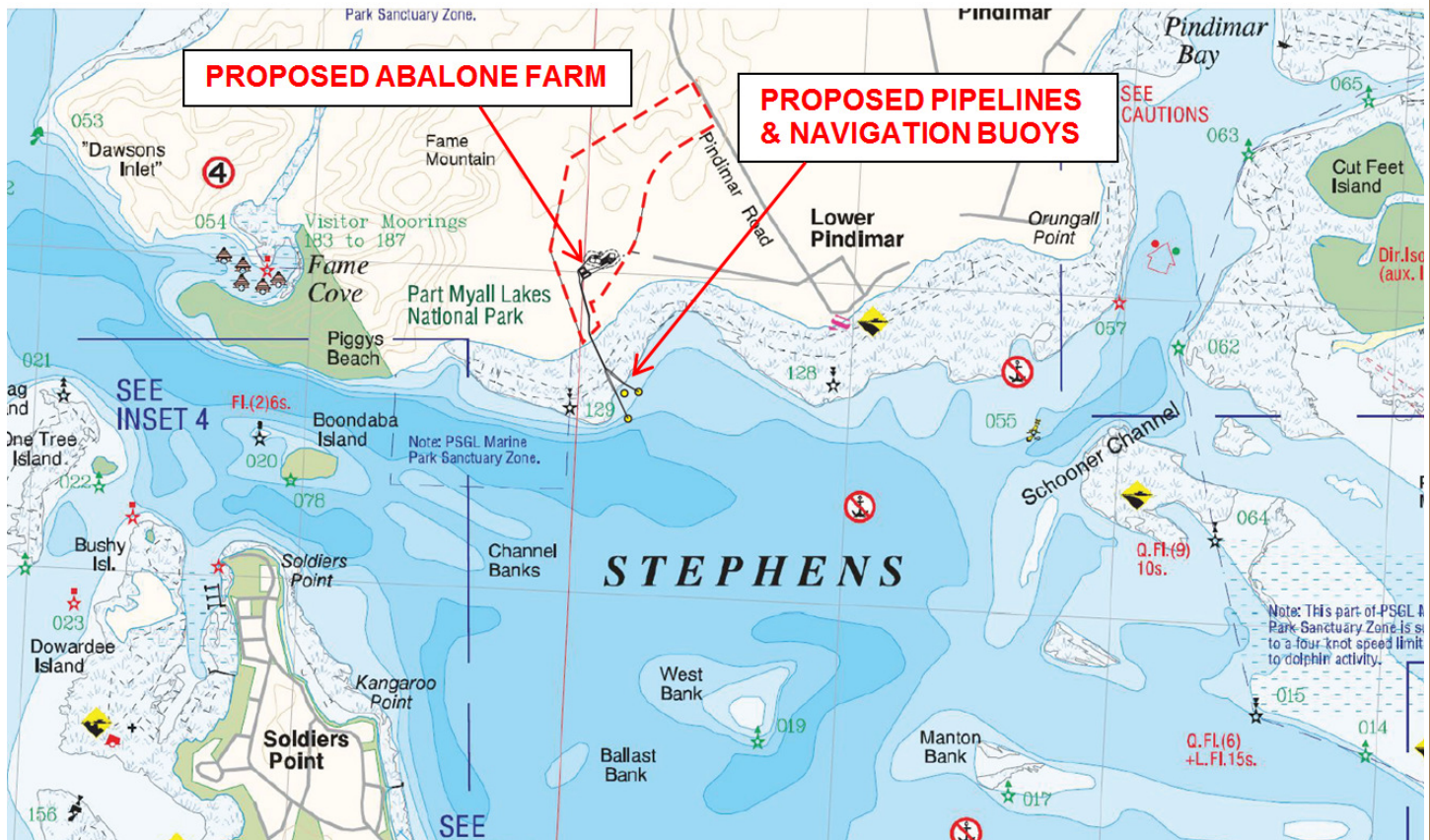


# PROPOSED ABALONE FARM- PINDIMAR

## Fishing Grounds Query

A land-based aquaculture farm for the culture of Blacklip Abalone (*Haliotis rubra*) is proposed at No. 180 Clarke Street, Pindimar (Lot 2 in DP 1014623). A detailed environmental assessment of the project has been undertaken and the proposal will soon be on public exhibition. Preliminary information is available on the Department of Planning & Infrastructure's Major Project Register (Major Project 10\_0006) at [www.planning.nsw.gov.au](http://www.planning.nsw.gov.au).



As part of the proposal, the following works are proposed within Port Stephens:

- 4 x inflow/ outflow pipes- Comprising:
  - 2 x inlet pipes- length approx. 540m, inlet depth approx. 15-20m, inlet location around -32.691000, 152.086620;
  - 2 x outlet pipes- length approx. 450m, outlet depth approx. 6m, outlet location around -32.689590, 152.087156;
  - Polypropylene with an external diameter of approx. 630mm;
  - Buried underground in intertidal area (i.e. from land to the divergence point- see *plan above*);
  - Raised approx. 50cm above the seabed on supports from around Indian Spring Low Tide Mark to inlets/outlets (i.e. from divergence point to terminals- see *plan above*).
- 3 navigational buoys- i.e. around pipe terminals- see *plan above*

The applicant (Austasia Leefield Pty Ltd) would appreciate **any information you may have on fishing grounds (commercial or recreational) or fishing ground access** in the vicinity of the proposed pipelines, including any access concerns as a result of the proposed farm.

Please provide your advice to Jillian at:

**Proposed Pindimar Abalone Farm- Fishing Grounds**  
**PO Box 688**  
**Newcastle 2300;**  
or [pindimarfeedback@cityplan.com.au](mailto:pindimarfeedback@cityplan.com.au)