

2.0 Existing Conditions

2.1 Port Kembla

Port Kembla is one of three main international trade ports in NSW, the others being Port Botany in Sydney and the Port of Newcastle. The Port is approximately 80 kilometres from the Sydney Central Business District (CBD) and three kilometres south of the Wollongong CBD, located in the Wollongong Local Government Area (LGA) (refer to **Figure 2-1**). It is recognised as the major industrial precinct within the Illawarra, contributing significantly to the economy of this region. The Port consists of an Inner and Outer Harbour, which are divided by a narrow opening called The Cut (refer to **Figure 2-2**). Port Kembla has 18 operational berths which import and export a variety of commodities.

Activities existing in the Inner Harbour include the BlueScope Steel steel export and bulk raw material import terminals, the Grain Corp grain terminal, the Port Kembla Coal Terminal and Australian Amalgamated Terminals for the import of motor vehicles, containerised and break bulk products. Features of the Outer Harbour are outlined in **Section 2.2** in more detail.

2.2 The Site

2.2.1 The Outer Harbour

The Outer Harbour is located in the south eastern extent of Port Kembla (refer to **Figure 2-3**). The Outer Harbour consists of a body of water enclosed to the south and west by the natural foreshore, and on the north and east by man-made breakwaters. The seaward opening between the two breakwaters provides the port entrance through which all ships access the Port. Once inside, ships make a right hand turn to access the Inner Harbour through The Cut. There is a well-defined channel through the Outer Harbour for this purpose.

The site, on which the Outer Harbour Development would be undertaken, is characterised by a mixture of both the built environment and natural features.

Key water-based features include:

- Three jetties to the south (No. 3 and 4 Jetties) and west (No. 6 Jetty).
- Six operational berths:
 - Berth 201: located on the northern breakwater – flammable liquids and oils.
 - Berths 202, 203, 204 and 205: located on the Gateway Terminal, No. 6 Jetty – bulk and break bulk products including copper concentrate, fertiliser, clinker, pulp/saw logs and steel products.
 - Berth 206: located on No. 4 Jetty – bulk liquids and sulphuric acid.
- A concrete lined stormwater drain, known as Darcy Road Drain located adjacent to properties currently occupied by Brick and Block, Orica and Sydney Water, which has an outlet to the west of No. 3 Jetty.
- Salty Creek, which extends from a location west of Port Kembla railway station and flows via a culvert under Old Port Road and discharges to the Outer Harbour.
- Red Beach, a small remnant of a sandy beach which extends south from the existing Salty Creek outlet.
- A recreational boat harbour and boat ramp located adjacent to the eastern breakwater.

Key land-side features include:

- A portion of land located south of No. 6 Jetty, recently reclaimed (in part) as part of Stage 1 works for the Outer Harbour Development. The CGM is currently being constructed on this land.
- Short term lease storage areas on the foreshore (current uses include stockpiling of material for reclamation).
- Stockpile area on the southern foreshore.
- Port Kembla Heritage Park located on the southern headland of the Outer Harbour, south of the eastern breakwater. The Heritage Park has been developed to conserve military, cultural and historic heritage and is also the location of the PKOPL offices and the Water Police headquarters.
- A rail network located between Darcy Road, Foreshore Road, Old Port Road and Five Islands Road.

Key elements of rail infrastructure in the Outer Harbour include:

- Freight rail network consisting of a balloon loop which meets at a junction point near Flinders Street, south east of Port Kembla North railway station and the Outer Harbour Sidings consisting of north and south rail siding yards. The Gateway Terminal is also serviced by twin parallel sidings which connect to the eastern side of the balloon loop.
- Passenger rail network (operated by RailCorp) comprising a line from Port Kembla Station (Five Islands Road) with intermediate stations of Port Kembla North, Cringila and Lysaghts, before connection to the main South Coast passenger line just south of Coniston Station.

Appendix B provides a series of photographs of the Outer Harbour Development site and surrounds.

2.2.2 Land Ownership

Land to be impacted by the proposed modification is outlined in **Table 2-1**. Acquisition of property by PKOPL may be required for the purposes of expanding existing rail infrastructure is identified on **Figure 2-3**.

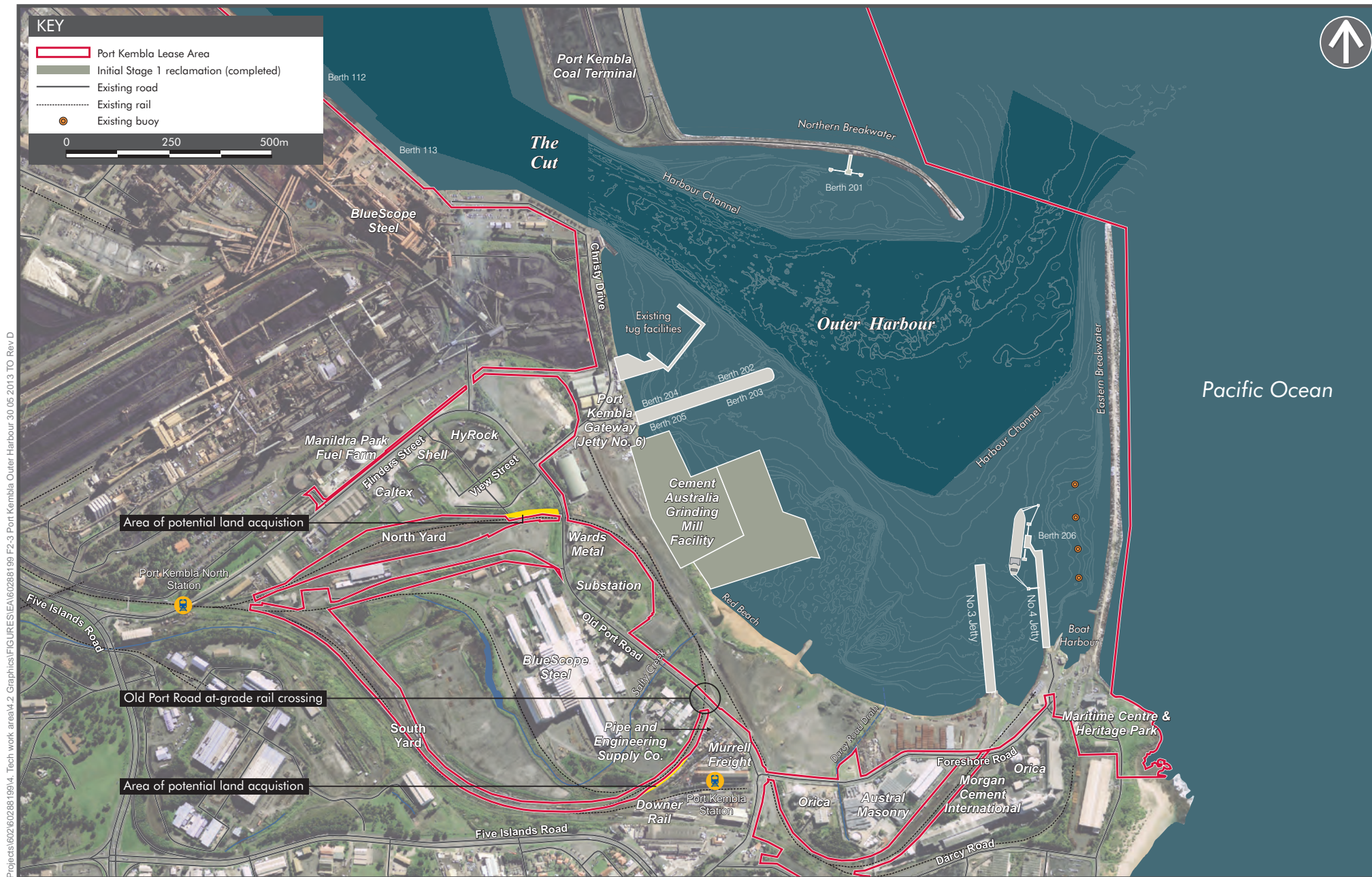
Table 2-1 Land ownership for the proposed modification

Location of land within Outer Harbour area	Owner	Comment
Land below mean high water mark.	NSW Roads and Maritime Service	-
Western and southern foreshore above high water mark and extending to Old Port Road and Foreshore Road.	Port Kembla Port Corporation	-
Rail balloon loop and rail corridor.	Port Kembla Port Corporation	-
Land to the north of the balloon loop and immediately west of Old Port Road.	Shell Australia	Potential acquisition of land from private owners may be required dependent upon detailed design of rail infrastructure and expansion of bridge over Old Port Road.
Land to the south of the balloon loop and immediately west of Old Port Road.	Pipe and Engineering Supply Co	Potential acquisition of land from private owners may be required for expansion of rail corridor.
Old Port Road and Foreshore Road.	Wollongong City Council	-



Projects\60260288\199\4_Tech work area\4.2 Graphics\FIGURES\EA\60288199_F2-1 Regional Context 30 05 2013 TO Rev B





This page has been left blank intentionally.

2.3 Surrounding Development

Commercial and industrial development comprises the main land use in the areas immediately south, west and north of the Outer Harbour foreshore. The main industries and commercial enterprises in the vicinity of the Outer Harbour are outlined in **Table 2-2**. It is noted that operations at the CGM are expected to commence in 2014.

Table 2-2 Industrial and commercial enterprises in vicinity of Outer Harbour

Business	Location	Operations
Cement Australia	Newly reclaimed land within Outer Harbour	Cement and ground granulate blast furnace slag production
Orica	Foreshore Road, opposite entrance to Outer Harbour	Sulphuric acid and sulphuric based chemical manufacturing, recycling, supply and import/export
BlueScope Steel	Old Port Road and off Five Islands Road	Integrated steelmaking operation including slab, hot rolled coil and steel plate products
Morgan Cement International	Foreshore Road	Cement, plaster, lime and concrete manufacturers
Austral Masonry	Foreshore Road	Storage of alpalite masonry units
HyRock NSW	Old Port Road	Materials handling and blending plant
Murrell Freight	Old Port Road	Road freight transportation
Pipe and Engineering Supply Company	Old Port Road	Pipe, valve, fitting, fire systems and mining services
BIS Industries	Old Port Road	Specialised equipment services for coal sector
Wards Metals	Old Port Road	Metal recycling
Port Kembla Gateway	Old Port Road/Christy Drive	Operation of Gateway Terminal
Shell	Flinders Road	Petrol station and storage
Downer Rail	Darcy Road	Freight rolling stock specialists
Pacific National	Old Port Road	Outer Harbour rail freight operations

Beyond the commercial and industrial land use is the residential development of the suburb of Port Kembla. The closest residential properties are located to the south west of the Outer Harbour along Wentworth Street, approximately 400 metres from the intersection of Old Port Road and Foreshore Road. These properties are slightly elevated on a rise from the surrounding industry of the Outer Harbour, with the closest industrial component being the southern edge of the balloon loop. The town centre of Port Kembla is located further south along Wentworth Street. Housing is also located to the south along Electrolytic Street, approximately 600 metres south of Foreshore Road.

The road network in the immediate vicinity of the Outer Harbour includes Foreshore Road, Old Port Road, Christy Drive and Darcy Road. Beyond this, Five Islands Road, Flinders Street, Springhill Road and Masters Road connect the Port with the surrounding localities, the Princes Highway and the Southern Freeway (F6).

This page has been left blank intentionally.