

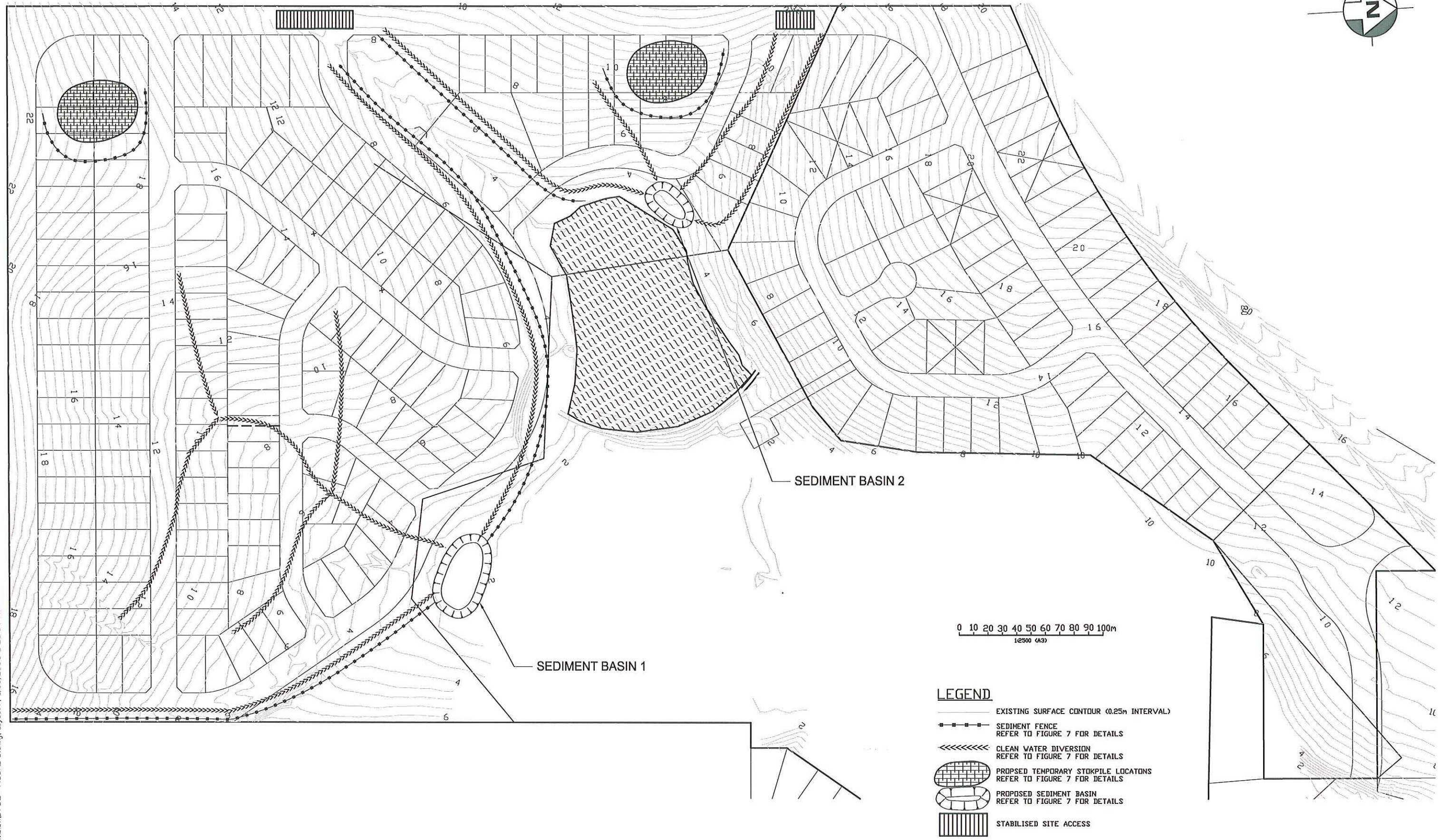
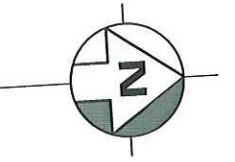


FIGURE 5



NA5782 Dolphin Point Sub division\5782 - FIGURE 5.dwg, Figure 5, 5/09/2006 11:07:48 AM

FIGURE 6

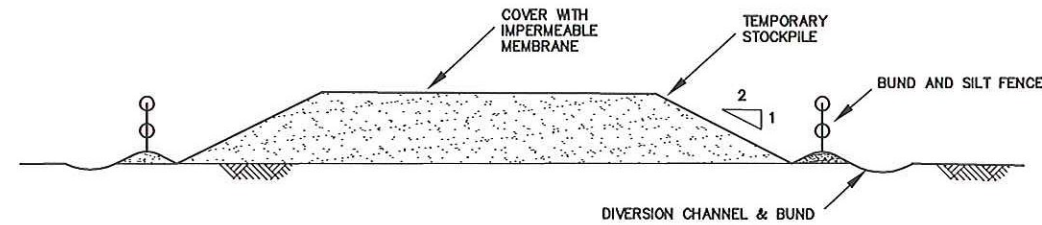


0 10 20 30 40 50 60 70 80 90 100m  
1:2500 (A3)

**LEGEND**

- EXISTING SURFACE CONTOUR (0.25m INTERVAL)
- - - - - SEDIMENT FENCE  
REFER TO FIGURE 7 FOR DETAILS
- - - - - CLEAN WATER DIVERSION  
REFER TO FIGURE 7 FOR DETAILS
- ▣ PROPOSED TEMPORARY STOPPILE LOCATIONS  
REFER TO FIGURE 7 FOR DETAILS
- PROPOSED SEDIMENT BASIN  
REFER TO FIGURE 7 FOR DETAILS
- ▨ STABILISED SITE ACCESS

N:\15782 Dolphin Point Sub division\5782 - FIGURE 6.dwg, Layout1, 6/09/2006 2:26:51 PM



TYPICAL TEMPORARY STOCKPILE

**NOTES:**

ALL EROSION AND SEDIMENT CONTROL MEASURES TO BE INSTALLED IN ACCORDANCE WITH THE DEPARTMENT OF HOUSINGS "BLUE BOOK".

**GEOFABRIC LINED SEDIMENT FENCE**

1. FOR SEDIMENT FENCE, JOIN SECTIONS OF FABRIC AT A STAR PICKET WITH 150mm OVERLAP.
2. DRIVE 1.5m LONG STAR PICKETS INTO GROUND, 3m APART.
3. DIG A 150mm DEEP TRENCH ALONG THE UPSLOPE LINE OF THE FENCE FOR THE BOTTOM OF THE FABRIC TO BE ENTRENCHED.
4. BACKFILL TRENCH OVER BASE OF FABRIC
5. FIX SELF-SUPPORTING GEOTEXTILE TO UPSLOPE SIDE OF POSTS WITH WIRE TIES OR AS RECOMMENDED BY GEOTEXTILE MANUFACTURER.

**TEMPORARY DIVERSION BANKS**

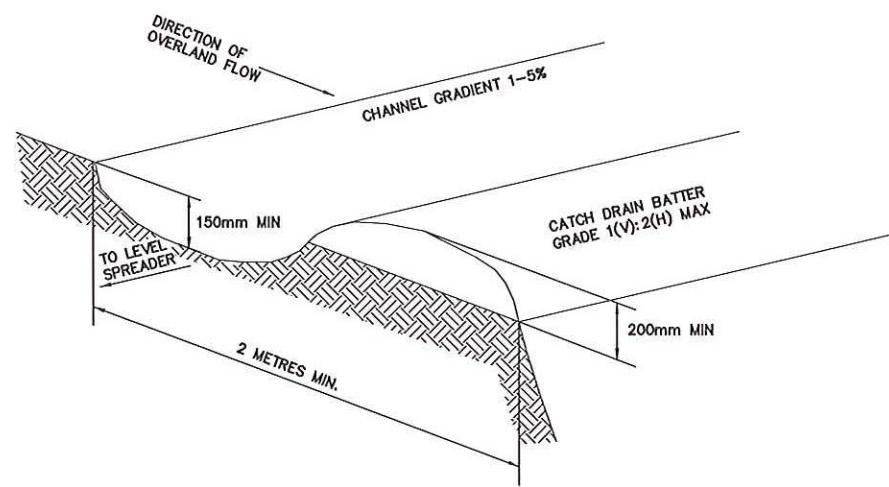
1. DRAINS TO BE OF PARABOLIC OR TRAPEZOIDAL CROSS SECTION NOT V-SHAPED.
2. EARTH BANKS TO BE ADEQUATELY COMPACTED IN ORDER TO PREVENT FAILURE.
3. CONSTRUCTION IS OF A TEMPORARY NATURE AND SHALL BE REMOVED AT COMPLETION OF WORKS.
4. DIRECT DISCHARGE TO LEVEL SPREADER.
5. COMPACT WITH A SUITABLE IMPLEMENT IN SITUATIONS WHERE THEY ARE REQUIRED TO FUNCTION FOR MORE THAN FIVE DAYS.
6. EARTH BANKS TO BE FREE OF PROJECTIONS OR OTHER IRREGULARITIES THAT WILL IMPEDE NORMAL FLOW.

**STABILISED SITE ACCESS**

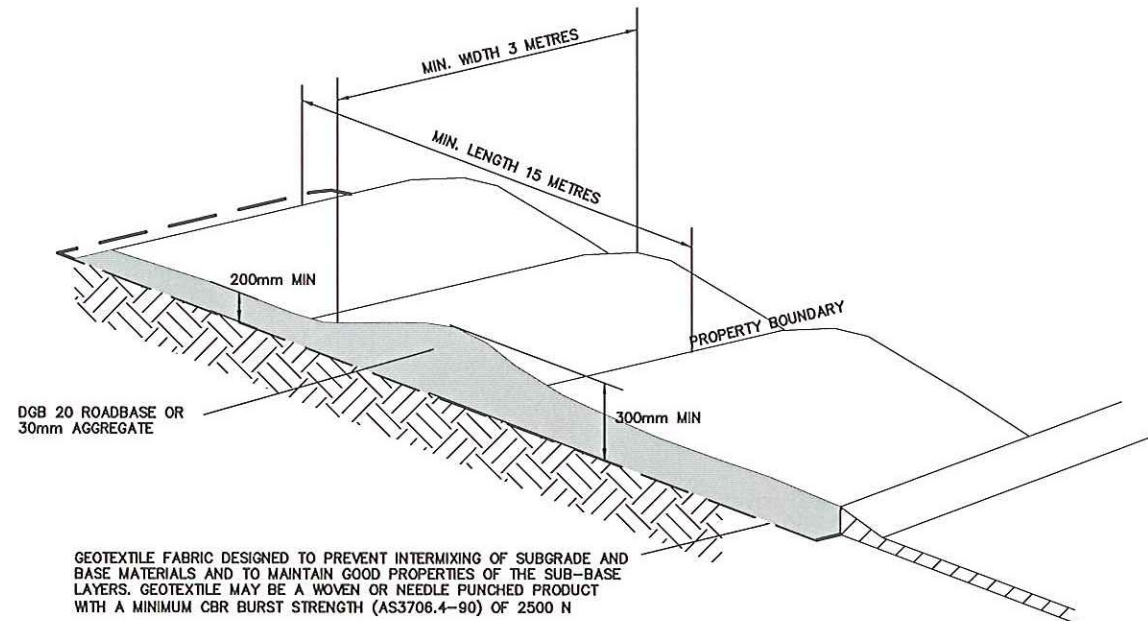
1. STRIP TOPSOIL AND LEVEL SITE.
2. COMPACT SUBGRADE
3. COVER AREA WITH NEEDLE-PUNCHED GEOTEXTILE
4. CONSTRUCT 200mm THICK PAD OVER GEOTEXTILE USING ROADBASE OR 30mm AGGREGATE. MINIMUM LENGTH 15 METRES OR TO BUILDING ALIGNMENT. MINIMUM WIDTH 3 METRES.
5. CONSTRUCT HUMP IMMEDIATELY WITHIN BOUNDARY TO DIVERT WATER TO A SEDIMENT FENCE OR OTHER SEDIMENT TRAP.

**SEDIMENT RETENTION POND**

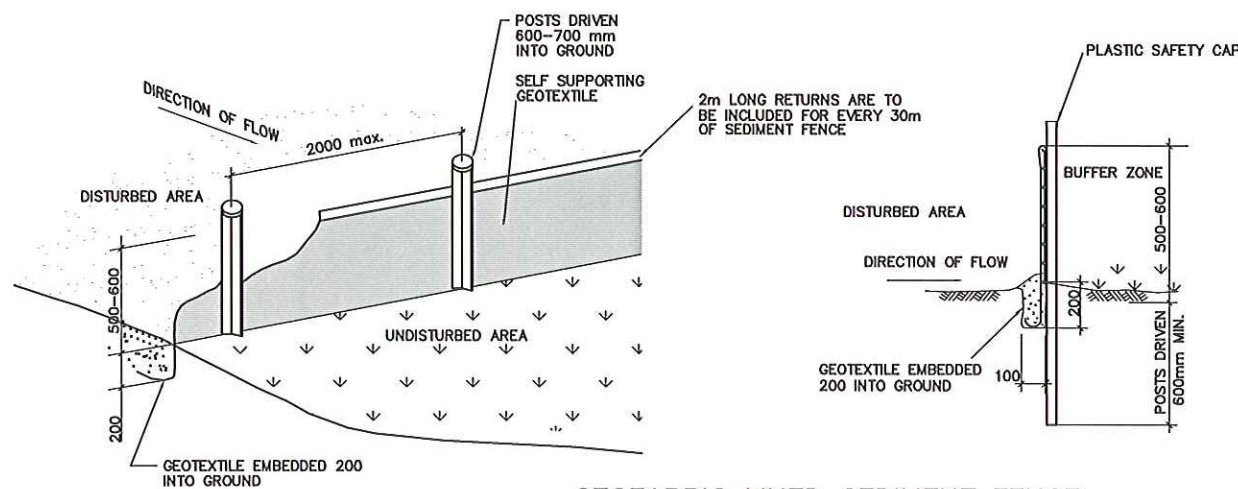
1. SEDIMENT RETENTION POND EMBANKMENT TO BE DESIGNED BY A SUITABLY QUALIFIED GEOTECHNICAL ENGINEER.
2. REMOVE ALL VEGETATION AND TOPSOIL FROM UNDER THE DAM WALL AND FROM WITHIN THE STORAGE AREA.
3. CONSTRUCT A CUTOFF TRENCH 500mm DEEP AND 1200mm WIDE ALONG THE CENTRELINE OF THE EMBANKMENT.
4. MAINTAIN THE TRENCH FREE OF WATER AND RECOMPACT THE MATERIALS WITH EQUIPMENT SPECIFIED BY THE GEOTECHNICAL ENGINEER TO 95% STANDARD PROCTOR DENSITY.
5. SELECT FILL ACCORDING TO DIRECTIONS FROM THE GEOTECHNICAL ENGINEER THAT IS FREE OF ROOTS, WOOD, ROCK, LARGE STONE OR FOREIGN MATERIAL.
6. PREPARE THE SITE UNDER THE EMBANKMENT BY RIPPING AT LEAST 100mm DEEP TO HOLD BOND COMPACTED FILL TO EXISTING SUBSTRATE.
7. SPREAD FILL IN 100-150mm LAYERS AND COMPACT AT OPTIMUM MOISTURE CONTENT IN ACCORDANCE WITH THE SWMP.
8. CONSTRUCT EMERGENCY SPILLWAY, TO BE SIZED BY A SUITABLY QUALIFIED ENGINEER.
9. PLACE A "FULL OF SEDIMENT" MARKER TO SHOW WHEN LESS THAN DESIGN CAPACITY OCCURS AND SEDIMENT REMOVAL IS REQUIRED.



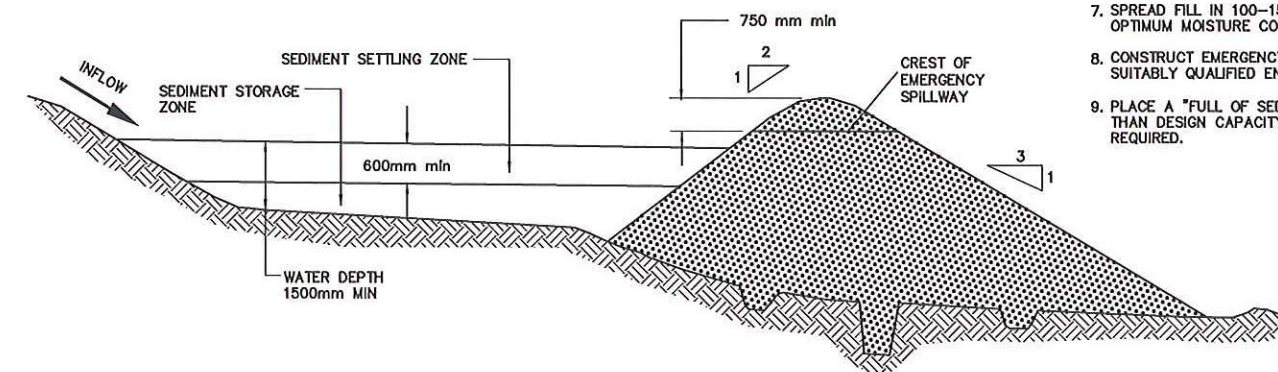
CLEAN WATER DIVERSION  
REFER TO SD5-5 IN THE BLUE BOOK



STABILISED SITE ACCESS  
REFER TO SD 6-14 IN THE BLUE BOOK



GEOFABRIC LINED SEDIMENT FENCE  
REFER TO SD 6-8 IN THE BLUE BOOK



SEDIMENT RETENTION POND  
REFER TO SD 6-4 IN THE BLUE BOOK

N:\5782 Dolphin Point Sub division\5782 - FIGURE 7.dwg, Fig 4, 5/09/2006 10:41:51 AM