

Rye Park Wind Farm

Project Update No 4 | March - April 2012

Latest News

This newsletter marks the release of the project's revised wind farm layout shown over page. In designing the revised layout, the project development team met with adjacent and neighbouring landowners and residents to the wind farm to obtain and consider their feedback. Epuron's biodiversity experts have incorporated the revised layout in their second seasonal field survey which will form part of the Environmental Assessment report - expected to be exhibited later this year.

A preferred substation connection site has been identified at the existing 330kV Transgrid power line that crosses the southern end of the site.

Community Consultation Committee

While the project consultation process has been underway for some time, Epuron is now seeking to establish the Community Consultation Committee (CCC) in preparation for a first meeting in the coming months.

The purpose and objectives of the CCC are:

- To enable Epuron to formally provide the local community with information about the proposal;
- To enable the community to express and for Epuron to understand any concerns regarding the potential impacts of the proposal;
- To enable Epuron to consider whether and how to incorporate any suggestions and feedback into the design of the proposal;
- To demonstrate how and where feedback has been incorporated and resulted in amendments to the proposal; and,
- To formally advise potential community benefits that can be integrated into the proposal.

Membership of the CCC is targeted to include the following:

- An independent chairperson;
- A representative of the involved wind farm landowners;
- A representative of the non involved neighbouring landowners;
- Representation from key local stakeholder groups or associations;
- A representative from each of the local councils (Yass, Boorowa and Upper Lachlan); and
- Representatives from Epuron including the Project Manager.

If you are interested in joining the CCC, please complete the Nomination Form enclosed and return to us.

For further information on Epuron's Consultation Framework, please refer to our website at <http://www.epuron.com.au/downloads/>



High Quality Wind Resource on Site

The Rye Park site is located in a good wind resource area and the regular collection of wind data continues. The three wind monitoring masts installed in 2008 show that favourable wind speeds exist on the site.



The wind monitoring masts and instruments are regularly checked and maintained by our in-house team of experts. Plans are underway to expand the wind monitoring program with additional equipment to be installed in the coming months.

Public Open Day Coming Soon

We are currently preparing to hold a community Open Day. We will be displaying the revised layout and other information about the wind farm. We will advise the date and location in due course and look forward to seeing you there. Your views and feedback are important to us.

Please send us your feedback

Write to us:



Rye Park Wind Farm
Level 11, 75 Miller Street
North Sydney NSW 2060

Email or Internet:



b.hall@epuron.com.au
www.epuron.com.au

Phone us:

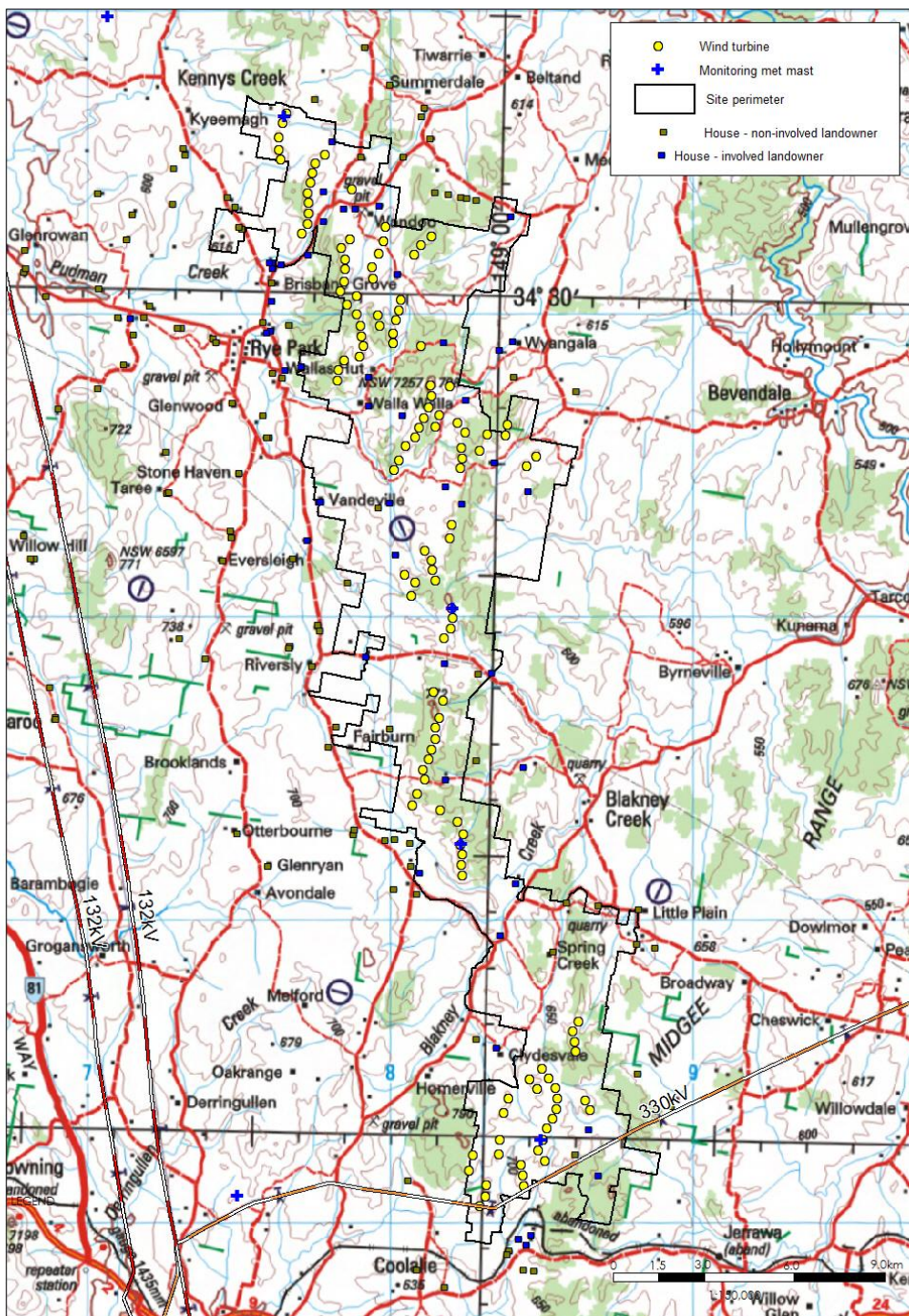


02 8456 7400

Revised Wind Farm Layout

The revised wind farm layout shown below accommodates 131 wind turbine locations across the site. Connection to the electricity grid will be at the southern end of the site at Transgrids existing 330kV network and a suitable location for a connection substation has been identified. In designing the revised layout, the development team consulted with the local community including meeting with adjacent and neighbouring landowners and residents to obtain and consider their feedback. The majority of the feedback supported the development of the wind farm as a mechanism for generating jobs and local investment in the region. Key areas of concern, which Epuron considered in the revised layout included:

- Meeting noise standards and considering the visual impact on neighboring dwellings;
- Increase distances between turbines, nearby homes and local towns for example Rye Park and Blakney Creek;
- Regard to be given to the draft NSW Planning Guidelines for Wind Farms.



Community Consultation Committee

Nomination Form

We are seeking nominations for members from the local community to join the Community Consultation Committee (CCC) for the Rye Park Wind Farm.

It is planned that the CCC will meet quarterly (or as otherwise required) at a local venue to be advised.

The purpose and objectives of the CCC are;

- To enable Epuron to formally provide the local community with information about the proposal;
- To enable the community to express and for Epuron to understand any concerns regarding the potential impacts of the proposal;
- To enable Epuron to consider whether and how to incorporate any suggestions and feedback into the design of the proposal;
- To demonstrate how and where feedback has been incorporated and resulted in amendments to the proposal; and,
- To formally advise potential community benefits that can be integrated into the proposal.

Nominees Role

Yes, I would like to nominate myself to join the CCC for the Rye Park wind farm in one of the following capacities.

Please tick the relevant box below.

- ☐ An independent chairperson
☐ A representative of the involved wind farm landowners
☒ A representative of the non involved neighbouring landowners
☐ Representation from key local stakeholder groups or associations (please provide details of group or association below)

Nominees Details

Name: _____

Address: _____

Phone: _____

Email: _____

Please provide reasons for your nomination: _____

Thank-You for your nomination

Should you require any further information please call us on **02 8456 700**.

Please return this Nomination Form to:



Address:

Rye Park Wind Farm
Level 11, 75 Miller Street
North Sydney NSW 2060



Email or Internet:

b.hall@epuron.com.au
www.epuron.com.au

