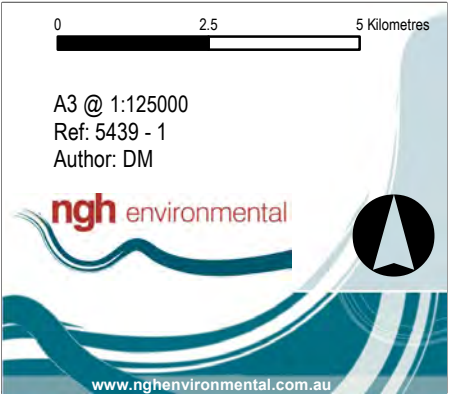
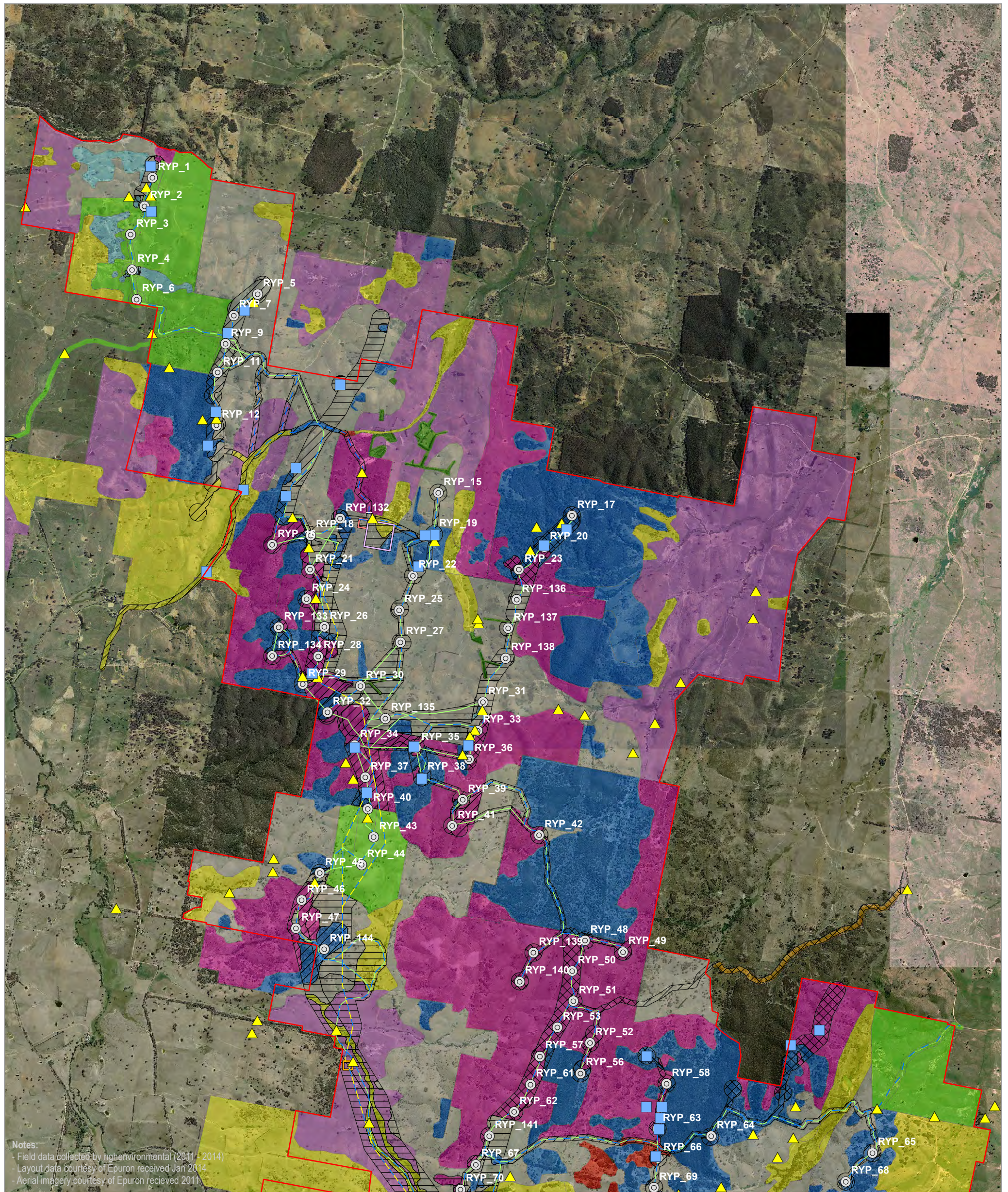


GENERAL SURVEY EFFORT AND RESULTS INDEX TO MAPS

Rye Park Wind Farm Biodiversity Assessment

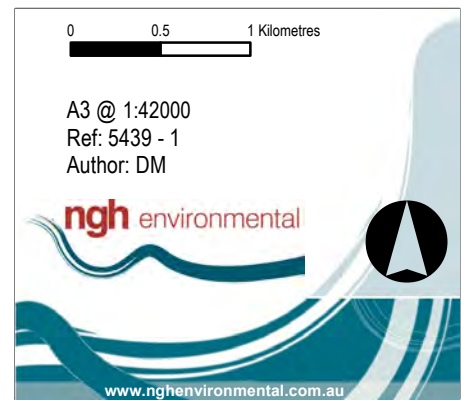
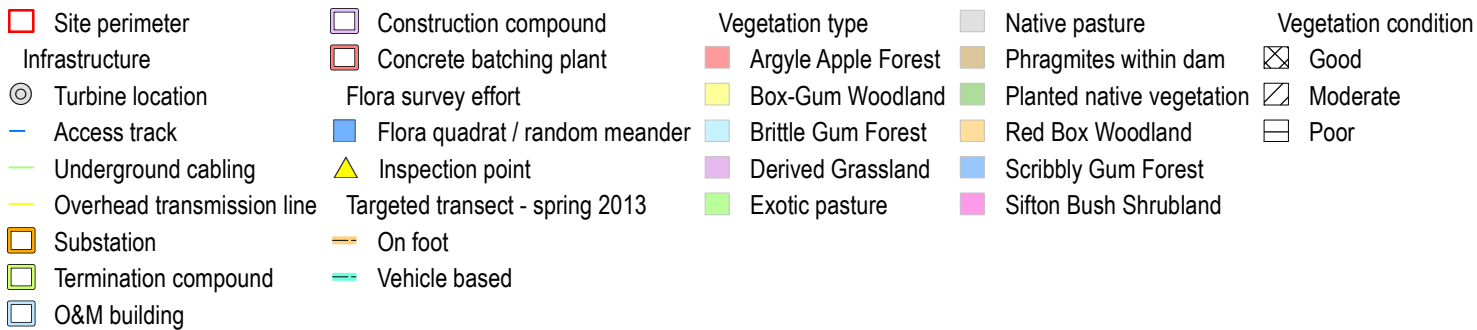
Site perimeter	Substation	Vegetation type	Native pasture	Vegetation condition
Infrastructure	Termination compound	Argyle Apple Forest	Phragmites within dam	Good
Turbine location	O&M building	Box-Gum Woodland	Planted native vegetation	Moderate
Access track	Construction compound	Brittle Gum Forest	Red Box Woodland	Poor
Underground cabling	Concrete batching plant	Derived Grassland	Scribbly Gum Forest	
Overhead transmission line		Exotic pasture	Sifton Bush Shrubland	

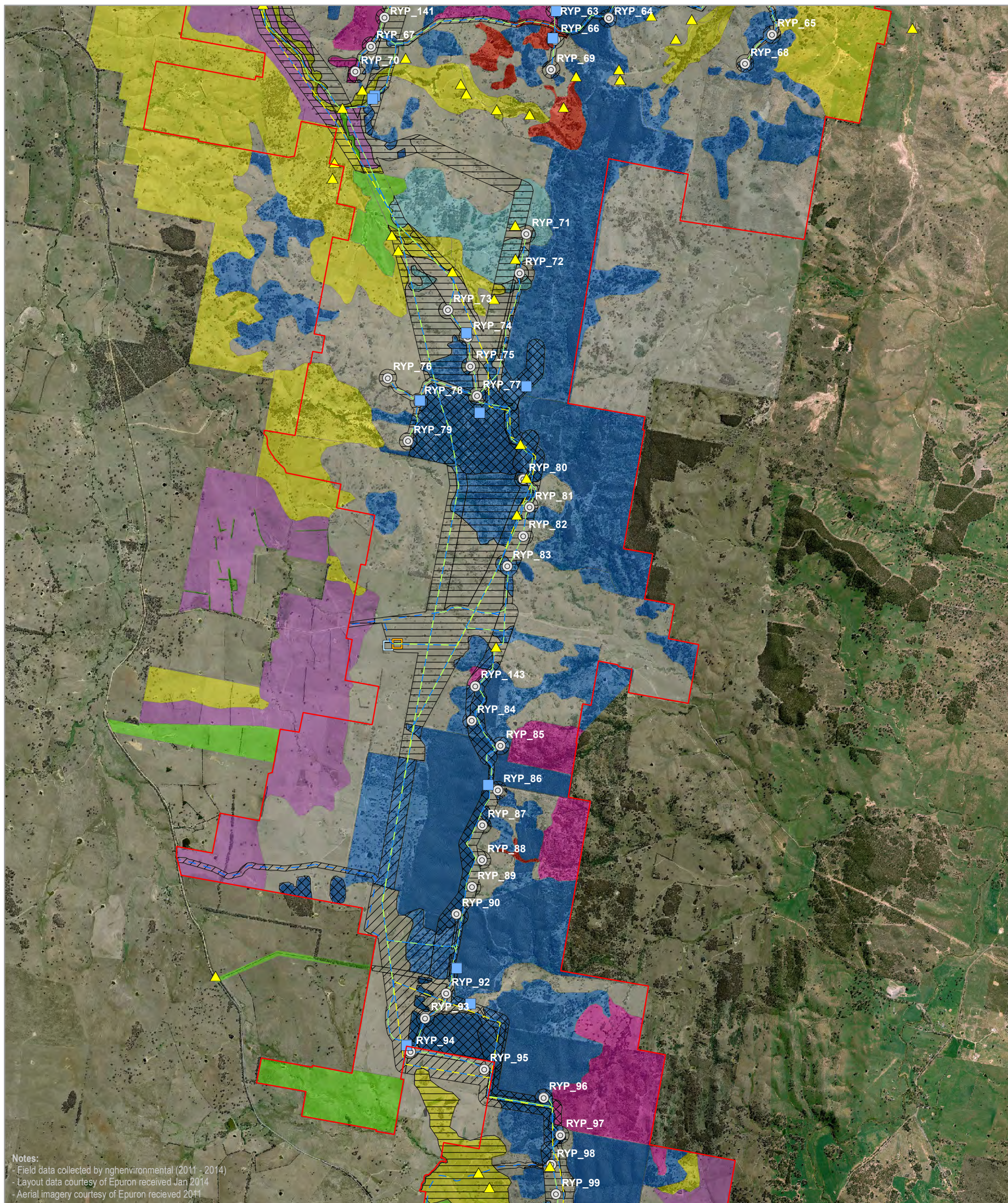




FLORA SURVEY EFFORT AND RESULTS MAP 1

Rye Park Wind Farm Biodiversity Assessment

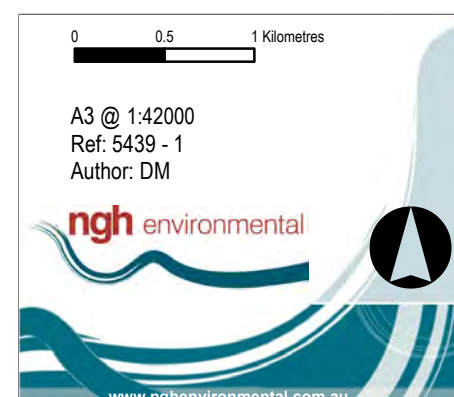


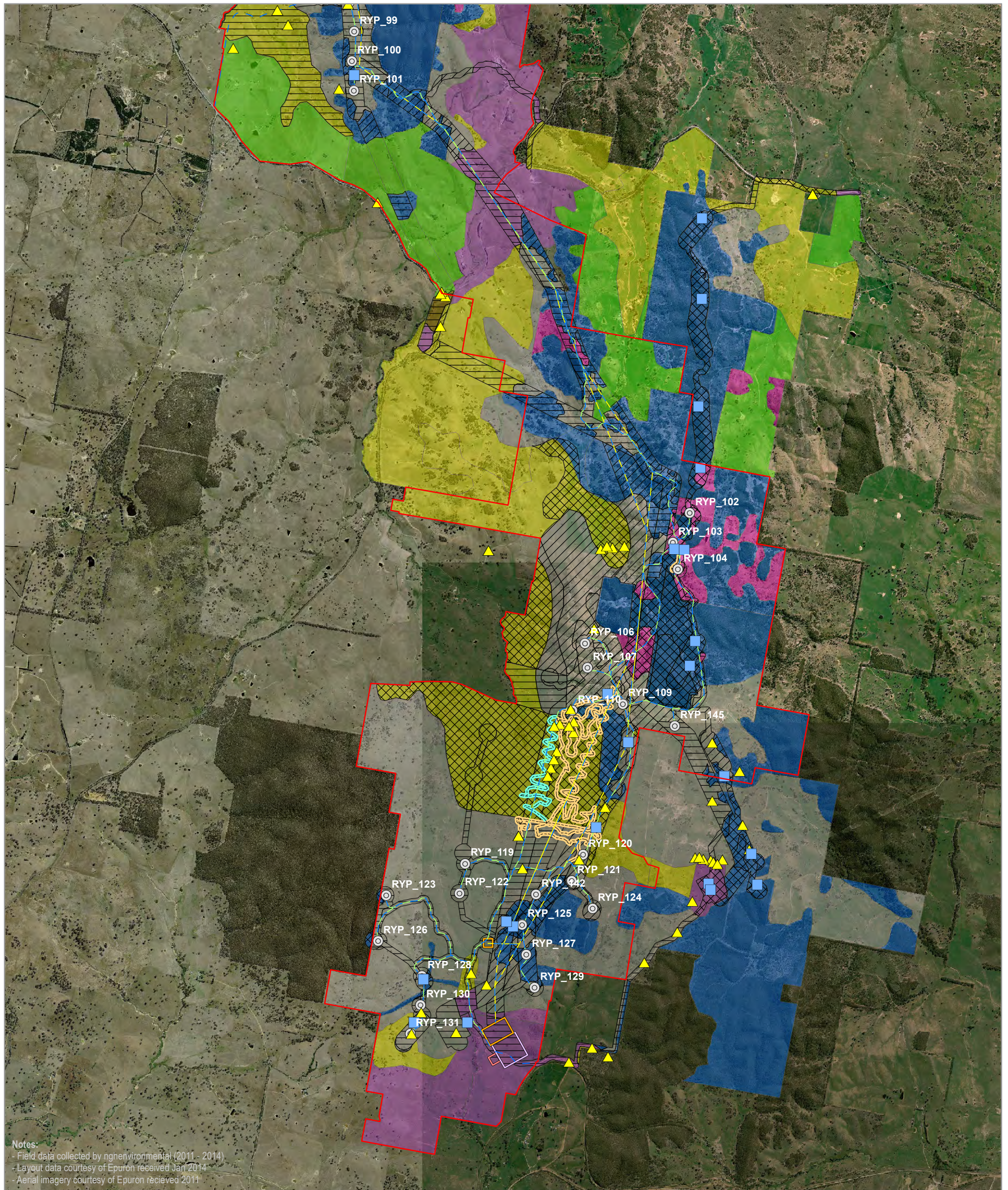


FLORA SURVEY EFFORT AND RESULTS MAP 2

Rye Park Wind Farm Biodiversity Assessment

<div>Site perimeter</div> <div>Infrastructure</div> <div>Turbine location</div> <div>Access track</div> <div>Underground cabling</div> <div>Overhead transmission line</div> <div>Substation</div> <div>Termination compound</div> <div>O&M building</div>	<div>Construction compound</div> <div>Concrete batching plant</div> <div>Flora survey effort</div> <div>Flora quadrat / random meander</div> <div>Inspection point</div> <div>Targeted transect - spring 2013</div> <div>On foot</div> <div>Vehicle based</div>	<div>Vegetation type</div> <div>Argyle Apple Forest</div> <div>Box-Gum Woodland</div> <div>Brittle Gum Forest</div> <div>Derived Grassland</div> <div>Exotic pasture</div>	<div>Native pasture</div> <div>Phragmites within dam</div> <div>Planted native vegetation</div> <div>Red Box Woodland</div> <div>Scribbly Gum Forest</div> <div>Sifton Bush Shrubland</div>	<div>Vegetation condition</div> <div>Good</div> <div>Moderate</div> <div>Poor</div>
--	---	--	---	---





FLORA SURVEY EFFORT AND RESULTS MAP 3

Rye Park Wind Farm Biodiversity Assessment

