

Notes:
- Field data collected by nghenvironmental (2011 - 2014)
- Layout data courtesy of Epuron received Jan 2014
- Aerial imagery courtesy of Epuron received 2011

FLORA CONSTRAINTS MAP 1

Rye Park Wind Farm Biodiversity Assessment

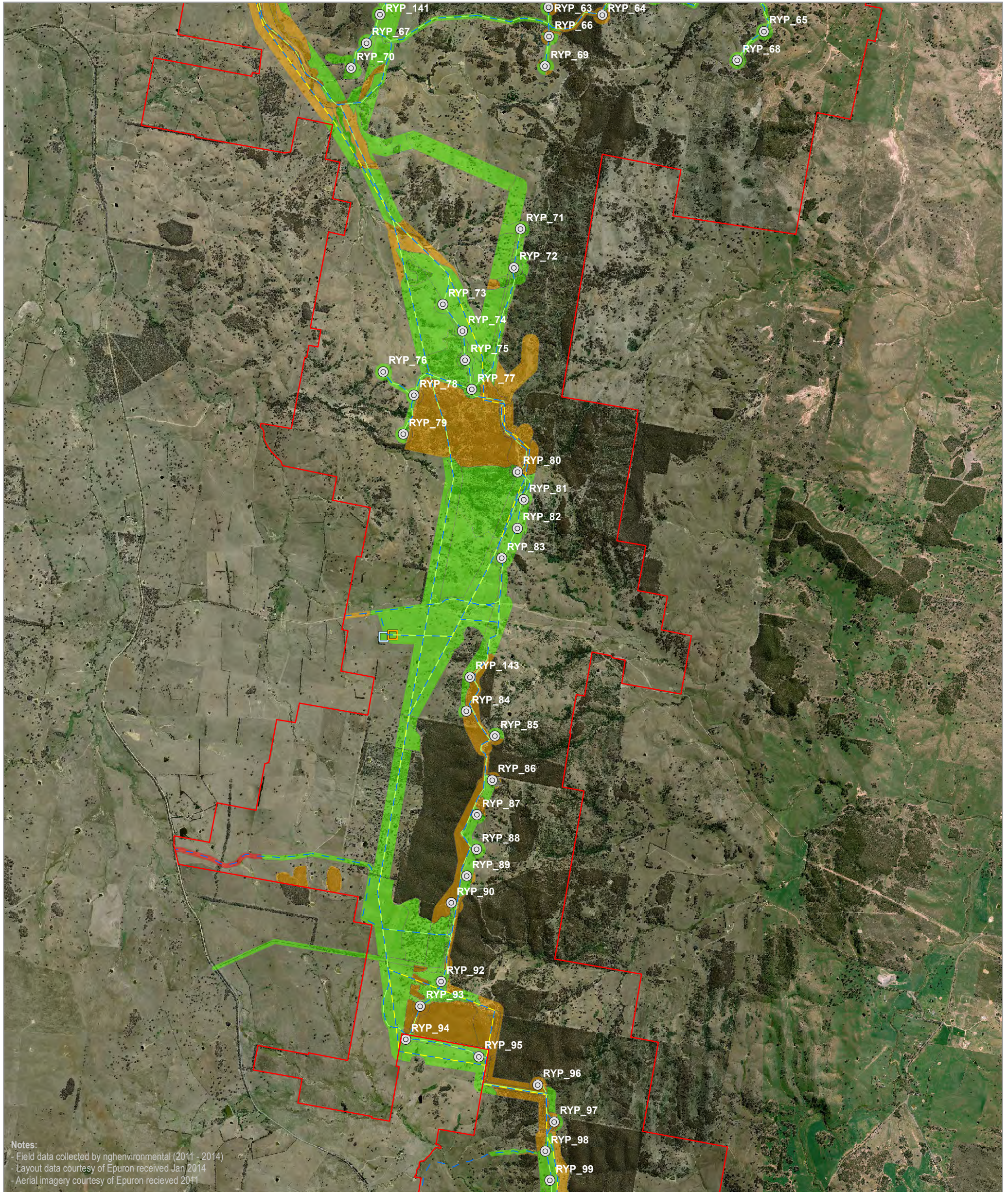
- | | | |
|----------------------------|-------------------------|-------------|
| Site perimeter | Substation | Constraints |
| Infrastructure | Termination compound | High |
| Turbine location | O&M building | Moderate |
| Access track | Construction compound | Low |
| Underground cabling | Concrete batching plant | |
| Overhead transmission line | | |

0 0.5 1 Kilometres

A3 @ 1:42000
Ref: 5439 - 1
Author: DM

ngh environmental

www.nghenvironmental.com.au



FLORA CONSTRAINTS MAP 2

Rye Park Wind Farm Biodiversity Assessment

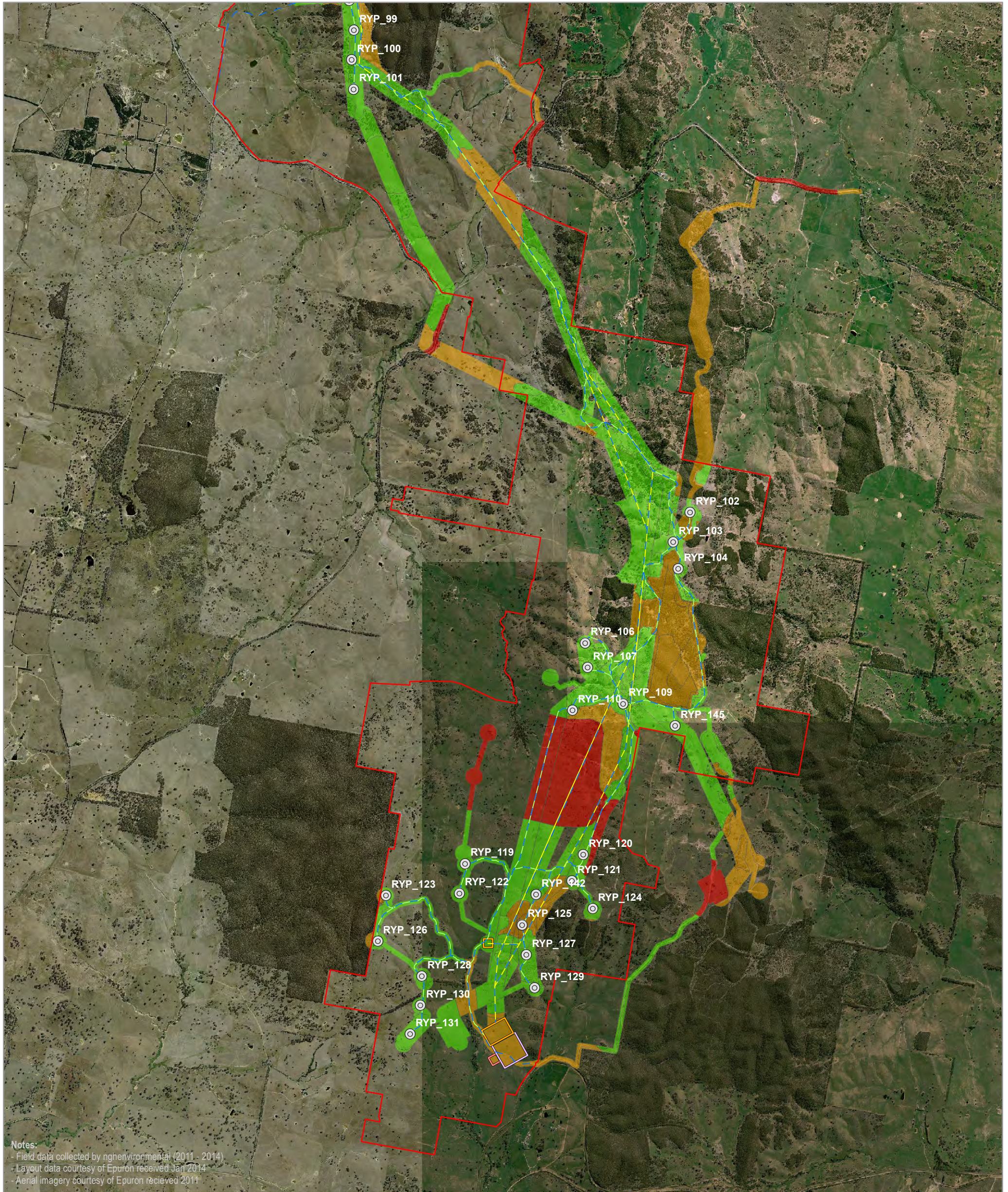
- | | | |
|----------------------------|-------------------------|-------------|
| Site perimeter | Substation | Constraints |
| Infrastructure | Termination compound | High |
| Turbine location | O&M building | Moderate |
| Access track | Construction compound | Low |
| Underground cabling | Concrete batching plant | |
| Overhead transmission line | | |

0 0.5 1 Kilometres

A3 @ 1:42000
Ref: 5439 - 1
Author: DM

ngh environmental

www.nghenvironmental.com.au



FLORA CONSTRAINTS MAP 3

Rye Park Wind Farm Biodiversity Assessment

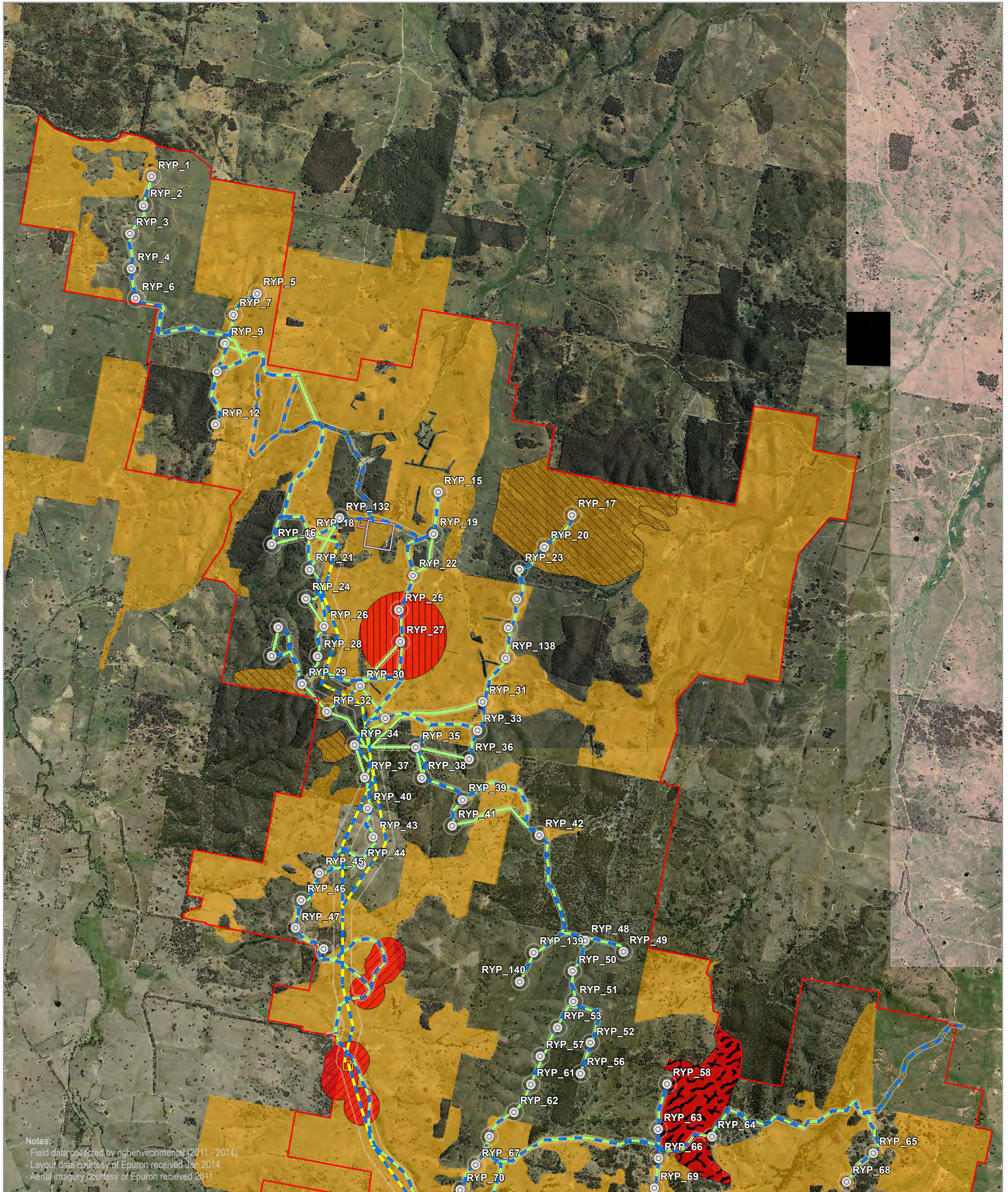
- | | | |
|----------------------------|-------------------------|-------------|
| Site perimeter | Substation | Constraints |
| Infrastructure | Termination compound | High |
| Turbine location | O&M building | Moderate |
| Access track | Construction compound | Low |
| Underground cabling | Concrete batching plant | |
| Overhead transmission line | | |

0 0.5 1 Kilometres

A3 @ 1:42000
Ref: 5439 - 1
Author: DM

ngh environmental

www.nghenvironmental.com.au



FAUNA CONSTRAINTS MAP 1

Rye Park Wind Farm Biodiversity Assessment

<div> <div></div> Site perimeter </div> <div> <div></div> Development envelope </div> <div> <div></div> Infrastructure </div> <div> <div></div> Turbine location </div> <div> <div></div> Access track </div> <div> <div></div> Underground cabling </div> <div> <div></div> Overhead transmission line </div>	<div> <div></div> Substation </div> <div> <div></div> Termination compound </div> <div> <div></div> O&M building </div> <div> <div></div> Construction compound </div> <div> <div></div> Concrete batching plant </div> <div> <div></div> Fauna constraints </div> <div> <div></div> High constraint </div>	<div> <div></div> Reason </div> <div> <div></div> Dense area of HBTs </div> <div> <div></div> GSM habitat 200m buffer </div> <div> <div></div> Nest tree 100m buffer </div> <div> <div></div> SLL habitat 500m buffer </div> <div> <div></div> Superb Parrot/Painted Honey Eater corridor and SP nest trees </div> <div> <div></div> Turbine(s) on edge of continuous good quality woodland/forest </div>	<div> <div></div> Moderate constraint </div> <div> <div></div> Reason </div> <div> <div></div> Potential GSM habitat </div> <div> <div></div> High number of threatened species </div> <div> <div></div> Turbine(s) surrounded by patchy good condition woodland/forest </div>
--	---	---	--

Note: Other areas not mapped within the development envelope are considered low constraint

0 0.5 1 Kilometres

A3 @ 1:42000
Ref: 5439 - 9
Author: DM

www.nghenvironmental.com.au