

Notes:
- Field data collected by nghenvironmental (2011 - 2014)
- Layout data courtesy of Epuron received Jan 2014
- Aerial imagery courtesy of Epuron received 2011

FAUNA CONSTRAINTS MAP 2
Rye Park Wind Farm Biodiversity Assessment

| | | | |
|--|-------------------------------------|---|--|
| <div></div> Site perimeter | <div></div> Substation | <div></div> Reason | <div></div> Moderate constraint |
| <div></div> Development envelope | <div></div> Termination compound | <div></div> Dense area of HBTs | <div></div> Reason |
| Infrastructure | <div></div> O&M building | <div></div> GSM habitat 200m buffer | <div></div> Potential GSM habitat |
| <div></div> Turbine location | <div></div> Construction compound | <div></div> Nest tree 100m buffer | <div></div> High number of threatened species |
| <div></div> Access track | <div></div> Concrete batching plant | <div></div> SLL habitat 500m buffer | <div></div> Turbine(s) surrounded by patchy good condition woodland/forest |
| <div></div> Underground cabling | Fauna constraints | <div></div> Superb Parrot/Painted Honey Eater corridor and SP nest trees | |
| <div></div> Overhead transmission line | <div></div> High constraint | <div></div> Turbine(s) on edge of continuous good quality woodland/forest | |

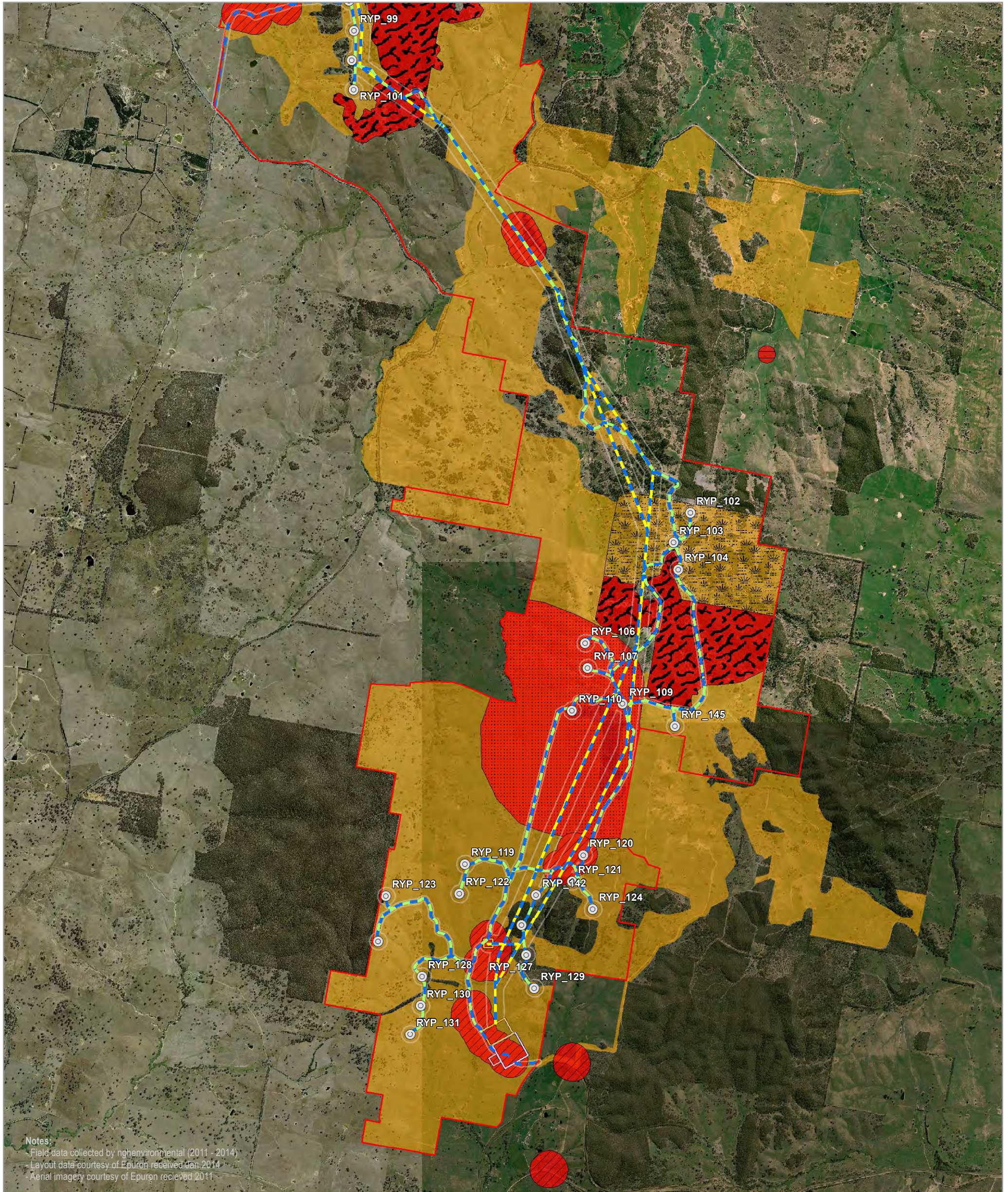
Note: Other areas not mapped within the development envelope are considered low constraint

00.51 Kilometres

A3 @ 1:42000
Ref: 5439 - 9
Author: DM

ngh environmental

www.nghenvironmental.com.au



FAUNA CONSTRAINTS MAP 3

Rye Park Wind Farm Biodiversity Assessment

| | | | |
|--|---|--|---|
| Site perimeter | Substation | Reason | Moderate constraint |
| Development envelope | Termination compound | Dense area of HBTs | Reason |
| Infrastructure | O&M building | GSM habitat 200m buffer | Potential GSM habitat |
| Turbine location | Construction compound | Nest tree 100m buffer | High number of threatened species |
| Access track | Concrete batching plant | SLL habitat 500m buffer | Turbine(s) surrounded by patchy good condition woodland/forest |
| Underground cabling | Fauna constraints | Superb Parrot/Painted Honey Eater corridor and SP nest trees | |
| Overhead transmission line | High constraint | Turbine(s) on edge of continuous good quality woodland/forest | |

Note: Other areas not mapped within the development envelope are considered low constraint

