

SOUTH PRECINCT PARKING ANALYSIS

Stage	for benefit of stage													Total Provided
	Ex: Greenbank/Verge/Vine			Stage 1: Linc		Stage 2		Stage 3		Stage 4	Stage 5		Stage 14	
	Resi	Visitor	Retail	Resi	Retail	Resi	Retail	Resi	Retail	Resi	Resi	Retail	Comm	
Existing	339	4	20	3	25	19	-	27	-	-	-	5	92	534
1	-	-	-	108	43	-	22	-	23	34	18	12	-	260
2	-	-	-	-	-	171	-	41	-	-	-	-	-	212
3	-	-	-	-	-	-	-	13	-	-	36	-	-	49
4	-	-	-	-	-	-	-	-	-	28	-	-	-	28
5	-	-	-	-	-	-	-	-	-	-	66	-	-	66
14	-	-	-	-	-	-	-	-	-	-	-	-	-	0
Total Prov	339	4	20	111	68	190	22	81	23	62	120	17	92	1149
CP min.	339	4	20	84	68	160	22	72	23	36	109	17	92	1046

NORTH PRECINCT PARKING ANALYSIS

	for benefit of stage						
	Stage 6 Arc	Stage 7	Stage 8-10	Stage 11	Stage 12	Stage 13	Total Provided
	Resi	Resi	Resi	Resi	Resi	Resi	
6	79	1	-	-	-	-	80
7	-	69	-	-	-	-	69
8	-	-	286	-	-	-	286
9	-	-	-	-	-	-	-
10	-	-	-	-	-	-	-
11		-	-	121	116	162	399
12							—
13	-	-	-	-	-	72	72
Total prov	79	70	286	121	116	234	906
CP min.	64	50	264	97	77	187	739

Current Bates Smart Doc. Ref. S11191 CMP-000					
Bates Smart	14	14.05.14	Issue for Review	KW	MA
	13	24.03.14	Issue for Review	KW	MA
Previous GroupGSA Doc. Ref. 213061 CMP-000[11]					
GSA	12	17.01.14	Issue for Information - Revised Bldg 3 & 5, B0 Layout, revised table	GB	BG
Previous PTW Doc. Issues					
PTW	11	17.09.13	Table revised (Bldg 8.9 and 10)	LP	AN
	10	09.09.13	Table revised (Bldg 8.9 and 10)	LP	AN
Previous Bates Smart Doc. Ref. S11191 CMP-B01[10]					
Bates Smart	09	08.07.13	Table revised (row deleted)	MA	MP
	08	19.02.13	Table revised (Bldg 4, 5, 1C retail)	MA	MP
	...	...	...	...	...
	Revision	Date	Description	Initial	Checked

Discovery Point, Wolli Creek  
Indicative Carpark Strategy  
Summary

Check all dimensions and site conditions prior to commencement of any work, the purchase or ordering of any materials, fittings, plant, services or equipment and the preparation of shop drawings and/or the fabrication of any components.  
Do not scale drawings - refer to figured dimensions only. Any discrepancies shall immediately be referred to the architect for clarification.  
All drawings may not be reproduced or distributed without prior permission from the architect.

Scale	NTS
Drawn	KW
Checked	MA
Project No.	S11191
Status	For Information
Plot Date	14.05.2014
Plot File	
Drawing No.	CMP-000[14]

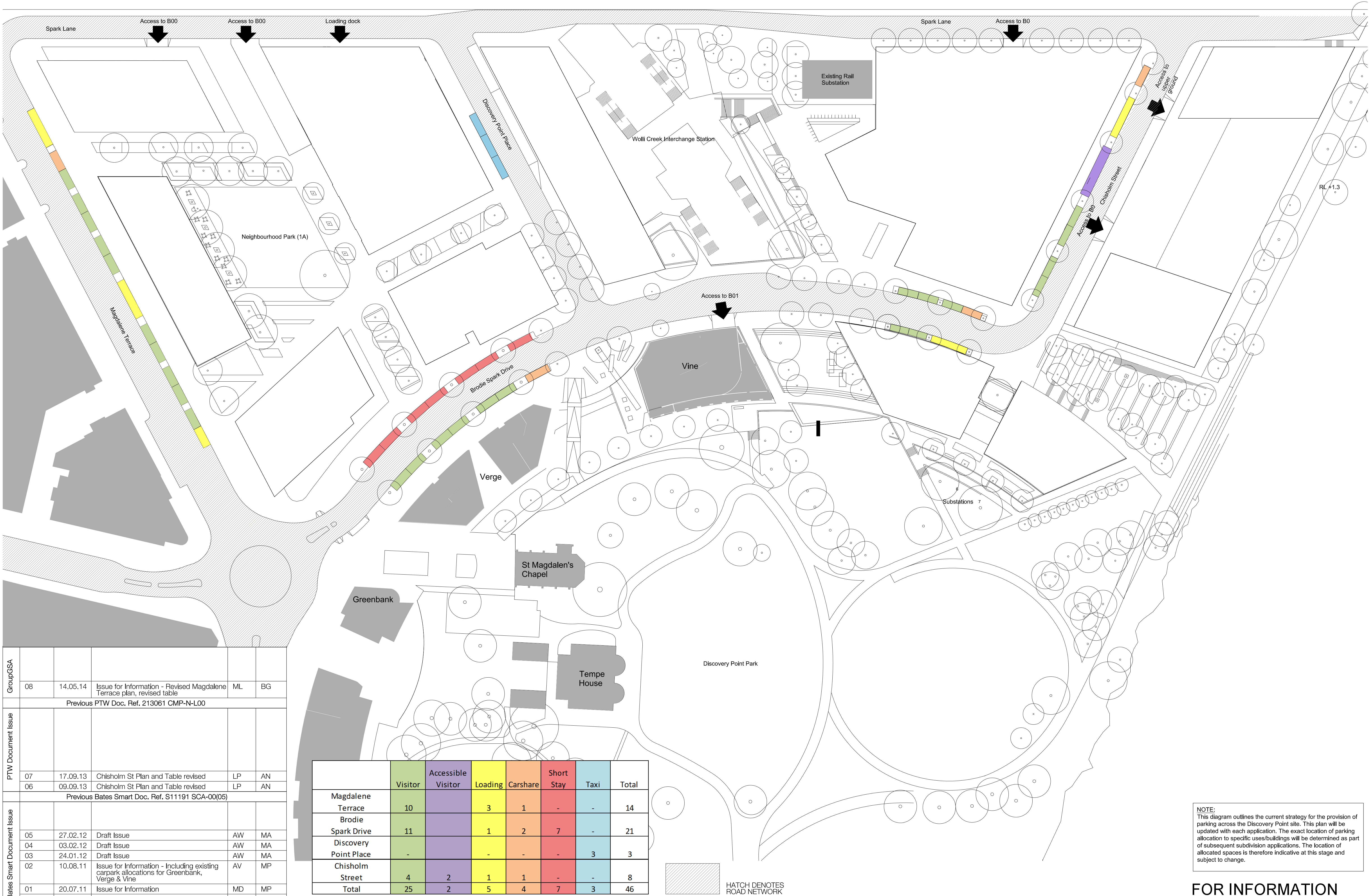
**Sydney** 1/243 Liverpool Street  
East Sydney NSW 2010 Australia  
T 02 8354 5100 F 02 8354 5199  
email syd@batesmart.com.au  
http://www.batesmart.com.au

**Melbourne** 1 Nicholson Street  
Melbourne VIC 3000 Australia  
T 03 8664 6200 F 03 8664 6300  
email melb@batesmart.com.au  
http://www.batesmart.com.au

Bates Smart Pty Ltd ABN 70 004 999 400

BATESSMART

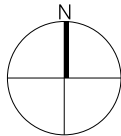




GroupGSA	08	14.05.14	Issue for Information - Revised Magdalene Terrace plan, revised table	ML	BG
	Previous PTW Doc. Ref. 213061 CMP-N-L00				
PTW Document Issue	07	17.09.13	Chisholm St Plan and Table revised	LP	AN
	06	09.09.13	Chisholm St Plan and Table revised	LP	AN
Bates Smart Document Issue	Previous Bates Smart Doc. Ref. S11191 SCA-00(05)				
	05	27.02.12	Draft Issue	AW	MA
	04	03.02.12	Draft Issue	AW	MA
	03	24.01.12	Draft Issue	AW	MA
	02	10.08.11	Issue for Information - Including existing carpark allocations for Greenbank, Verge & Vine	AV	MP
	01	20.07.11	Issue for Information	MD	MP
	P1	05.05.11	Draft Issue	APW	MP
Revision	Date	Description	Initial	Check	

NOTE:  
This diagram outlines the current strategy for the provision of parking across the Discovery Point site. This plan will be updated with each application. The exact location of parking allocation to specific uses/buildings will be determined as part of subsequent subdivision applications. The location of allocated spaces is therefore indicative at this stage and subject to change.

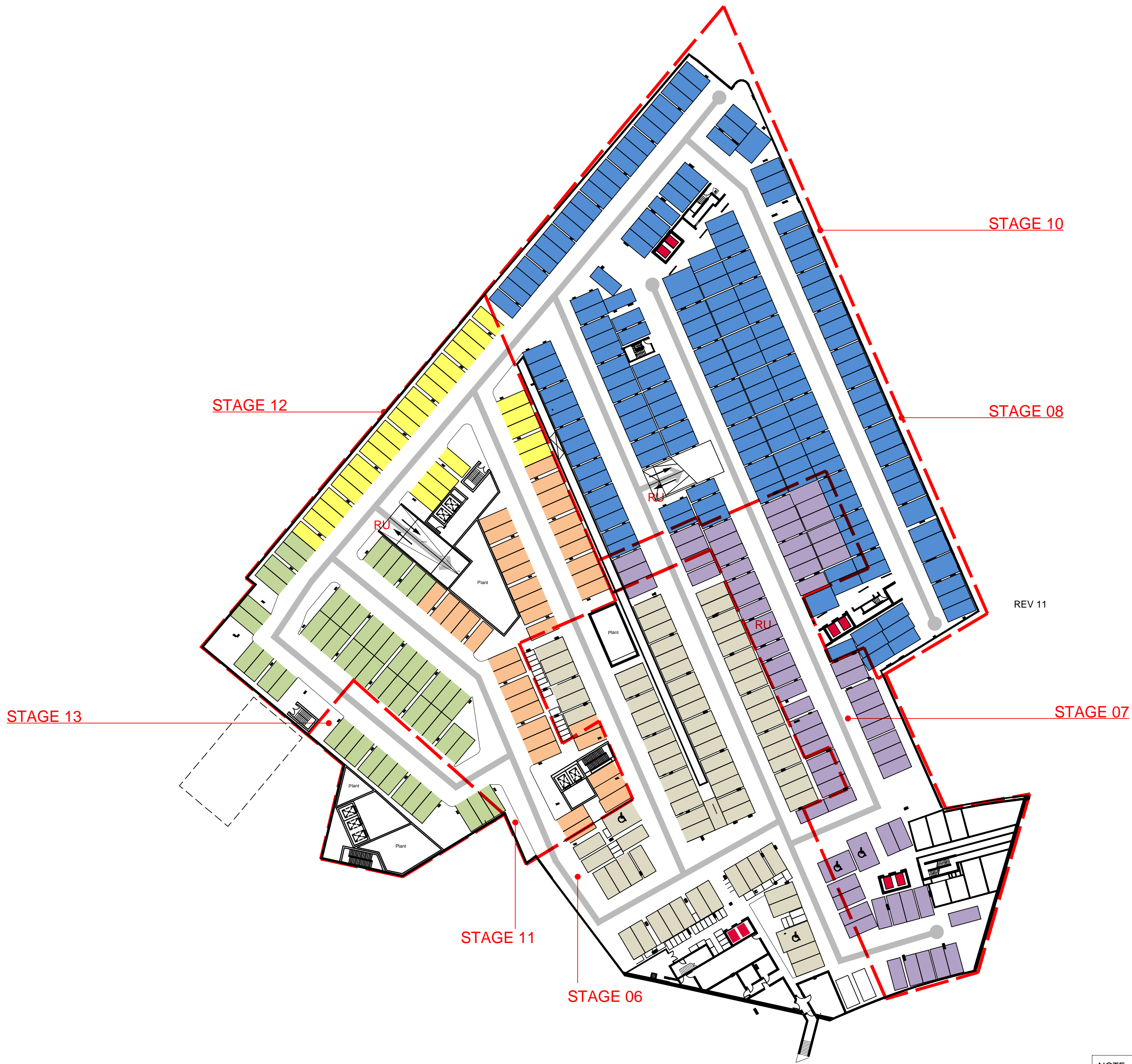
FOR INFORMATION  
NOT FOR APPROVAL











**NOTE:**  
This diagram outlines the current strategy for the provision of parking across the Discovery Point site. This plan will be updated with each application. The exact location of parking allocation to specific uses/buildings will be determined as part of subsequent subdivision applications. The location of allocated spaces if therefore indicative at this stage and subject to change.

REFER TO CMP-S-B01 FOR SOUTH PRECINCT

**FOR INFORMATION  
NOT FOR APPROVAL**

- KEY**
- Existing stage already constructed (Greenbank, Verge & Vine)
  - Discovery Point basement stages
  - Vehicle Circulation
  - Access / Egress
  - Dead End
  - RD Ramp Down
  - RU Ramp up
  - CW Carwash Bay
  - VP Visitor Parking

	REV 13   REV 13   REV 13   REV 13 for benefit of stage						Total Provided
	Stage 6 Arc	Stage 7	Stage 8-10	Stage 11	Stage 12	Stage 13	
	Resi	Resi	Resi	Resi	Resi	Resi	
6	79	1	-	-	-	-	80
7	-	69	-	-	-	-	69
8	-	-	286	-	-	-	286
9	-	-	-	-	-	-	
10	-	-	-	-	-	-	
11	-	-	-	121	116	162	399
12	-	-	-	-	-	-	
13	-	-	-	-	-	72	72
Total prov	79	70	286	121	116	234	906

Current Bates Smart Doc. Ref. S11191 CMP					
Bates Smart	13	21.03.14	Issue for Review	KW	MA
Previous PTW Doc. Issues					
PTW	12	17.09.13	Plan and Table revised (Bldg 8,9 and 10)	LP	AN
	11	12.09.13	Plan and Table revised (Bldg 8,9 and 10)	LP	AN
Previous Bates Smart Doc. Ref. S11191 CMP-B01[10]					
Bates Smart	10	19.10.12	For Information	MA	MP
	09	27.02.12	Draft Issue	AW	MA
	...	...	...	...	...
Revision	Date	Description	Initial	Checked	

Discovery Point, Wolli Creek  
Indicative Carpark Strategy  
North Precinct  
Basement Level 01

Check all dimensions and site conditions prior to commencement of any work, the purchase or ordering of any materials, fittings, plant, services or equipment and the preparation of shop drawings and/or the fabrication of any components.  
Do not scale drawings - refer to figured dimensions only. Any discrepancies shall immediately be referred to the architect for clarification.  
All drawings may not be reproduced or distributed without prior permission from the architect.

Scale 1:500@A1, 1:1000@A3  
Drawn KW Checked MA  
Project No. S11191  
Status Issue for Review  
Plot Date 21.03.2014  
Plot File  
Drawing No. CMP-N-B01[13] Revision

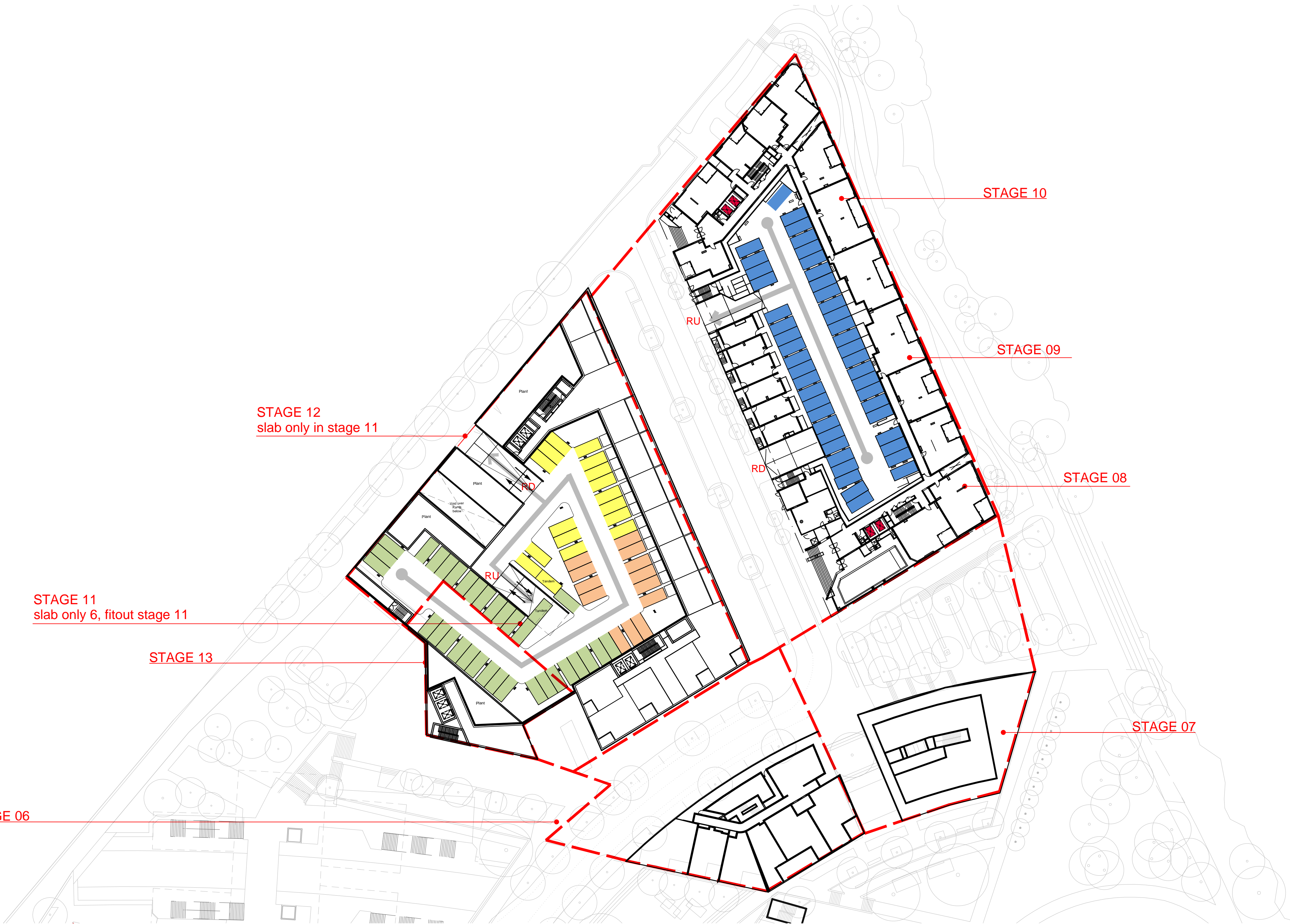
**Sydney** 1/243 Liverpool Street  
East Sydney NSW 2010 Australia  
T 02 8354 5100 F 02 8354 5199  
email syd@batesmart.com.au  
http://www.batesmart.com.au

**Melbourne** 1 Nicholson Street  
Melbourne VIC 3000 Australia  
T 03 8664 6200 F 03 8664 6300  
email melb@batesmart.com.au  
http://www.batesmart.com.au

Bates Smart Pty Ltd ABN 70 004 999 400

**BATESSMART**





**NOTE:**  
This diagram outlines the current strategy for the provision of parking across the Discovery Point site. This plan will be updated with each application. The exact location of parking allocation to specific uses/buildings will be determined as part of subsequent subdivision applications. The location of allocated spaces if therefore indicative at this stage and subject to change.

**FOR INFORMATION  
NOT FOR APPROVAL**

KEY	REV 13   REV 13   REV 13   REV 13						
	for benefit of stage						Total Provided
	Stage 6 Arc	Stage 7	Stage 8-10	Stage 11	Stage 12	Stage 13	
Existing stage already constructed (Greenbank, Verge & Vine)	Resi	Resi	Resi	Resi	Resi	Resi	
Discovery Point basement stages	6	79	1	-	-	-	80
Vehicle Circulation	7	-	69	-	-	-	69
Access / Egress	8	-	-	286	-	-	286
Dead End	9	-	-	-	-	-	
Ramp Down	10	-	-	-	-	-	
Ramp up	11	-	-	-	121	116	399
Carwash Bay	12	-	-	-	-	-	
Visitor Parking	13	-	-	-	-	72	72
	Total prov	79	70	286	121	116	234
							906

Current Bates Smart Doc. Ref. S11191 CMP					
Bates Smart	12	21.03.14	Issue for Review	KW	MA
Previous PTW Doc. Issues					
PTW	11	17.09.13	Plan and Table revised (Bldg 8,9 and 10)	LP	AN
	10	09.09.13	Plan and Table revised (Bldg 8,9 and 10)	LP	AN
Previous Bates Smart Doc. Ref. S11191 CMP-L00[09]					
Bates Smart	09	19.10.12	For Information	MA	MP
	08	27.02.12	Draft Issue	AW	MA
	...	...	...	...	...
	Revision	Date	Description	Initial	Checked

Discovery Point, Wolli Creek  
Indicative Carpark Strategy  
North Precinct  
Level 00

Scale	1:500@A1, 1:1000@A3		
Drawn	KW	Checked	MA
Project No.	S11191		
Status	Issue for Review		
Plot Date	21.03.2014		
Plot File			
Drawing No.	CMP-N-L00[12]	Revision	

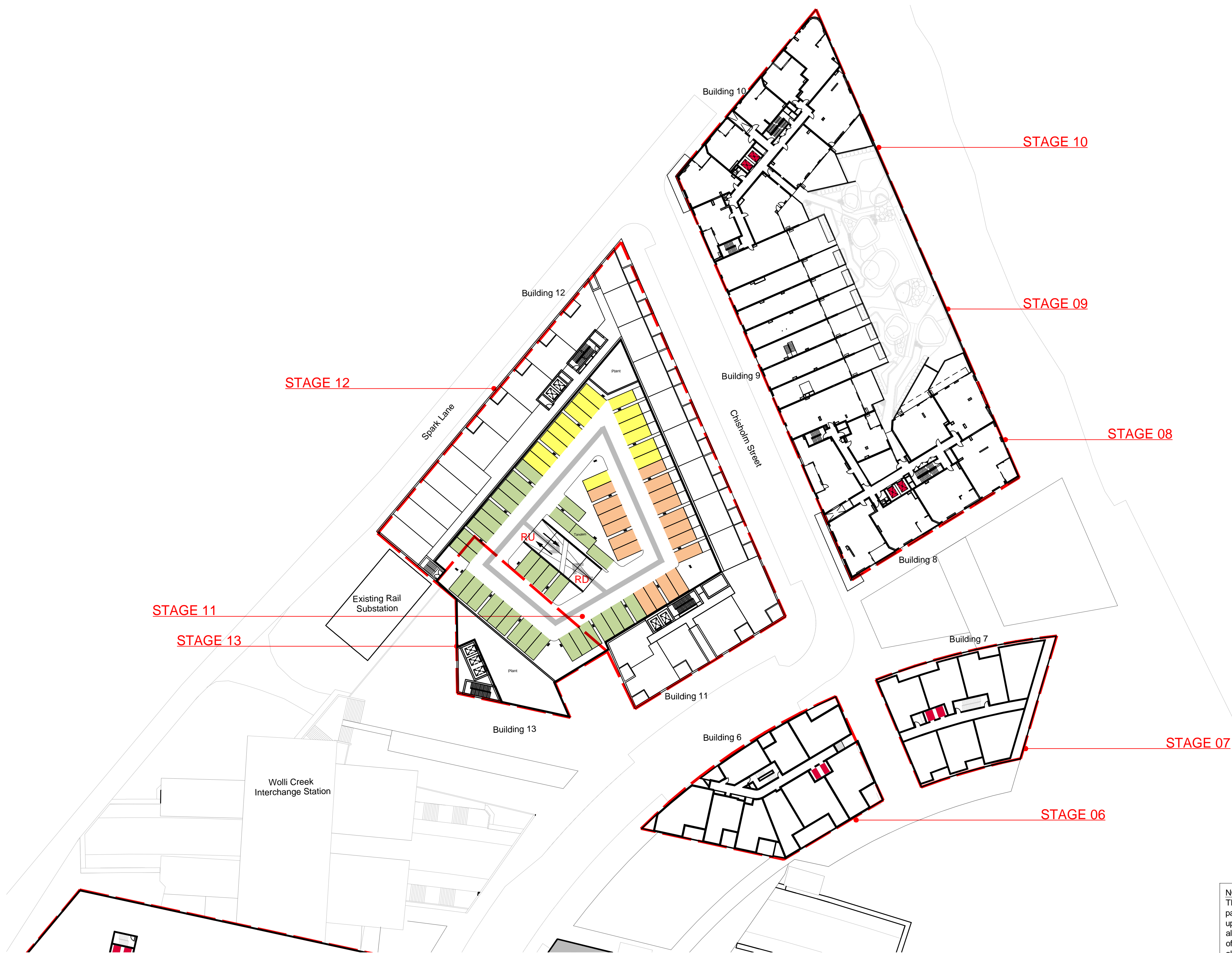
**Sydney** 1/243 Liverpool Street  
East Sydney NSW 2010 Australia  
T 02 8354 5100 F 02 8354 5199  
email syd@batesmart.com.au  
http://www.batesmart.com.au

**Melbourne** 1 Nicholson Street  
Melbourne VIC 3000 Australia  
T 03 8664 6200 F 03 8664 6300  
email melb@batesmart.com.au  
http://www.batesmart.com.au

Bates Smart Pty Ltd ABN 70 004 999 400

**BATESSMART**





**NOTE:**  
This diagram outlines the current strategy for the provision of parking across the Discovery Point site. This plan will be updated with each application. The exact location of parking allocation to specific uses/buildings will be determined as part of subsequent subdivision applications. The location of allocated spaces if therefore indicative at this stage and subject to change.

**FOR INFORMATION  
NOT FOR APPROVAL**

		REV 13						REV 13	REV 13	REV 13	REV 13
KEY		for benefit of stage							Total Provided		
		Stage 6 Arc	Stage 7	Stage 8-10	Stage 11	Stage 12	Stage 13				
		Resi	Resi	Resi	Resi	Resi	Resi				
Existing stage already constructed (Greenbank, Verge & Vine)	6	79	1	-	-	-	-	80			
Discovery Point basement stages	7	-	69	-	-	-	-	69			
Vehicle Circulation	8	-	-	286	-	-	-	286			
Access / Egress	9	-	-	-	-	-	-				
Dead End	10	-	-	-	-	-	-				
RD Ramp Down	11	-	-	-	121	116	162	399			
RU Ramp up	12	-	-	-	-	-	-				
CW Carwash Bay	13	-	-	-	-	-	72	72			
VP Visitor Parking	Total prov	79	70	286	121	116	234	906			

Current Bates Smart Doc. Ref. S11191 CMP					
Bates Smart	12	21.03.14	Issue for Review	KW	MA
Previous PTW Doc. Issues					
PTW	11	17.09.13	Plan and Table revised (Bldg 8,9 and 10)	LP	AN
	10	09.09.13	Plan and Table revised (Bldg 8,9 and 10)	LP	AN
Previous Bates Smart Doc. Ref. S11191 CMP-L01[09]					
Bates Smart	09	19.10.12	For Information	MA	MP
	08	27.02.12	Draft Issue	AW	MA
	...	...	...	...	...
Revision	Date	Description	Initial	Checked	

Discovery Point, Wolli Creek  
Indicative Carpark Strategy  
North Precinct  
Level 01

Check all dimensions and site conditions prior to commencement of any work, the purchase or ordering of any materials, fittings, plant, services or equipment and the preparation of shop drawings and/or the fabrication of any components.  
Do not scale drawings - refer to figured dimensions only. Any discrepancies shall immediately be referred to the architect for clarification.  
All drawings may not be reproduced or distributed without prior permission from the architect.

Scale	1:500@A1, 1:1000@A3		
Drawn	KW	Checked	MA
Project No.	S11191		
Status	Issue for Review		
Plot Date	21.03.2014		
Plot File			
Drawing No.	CMP-N-L01[12]	Revision	

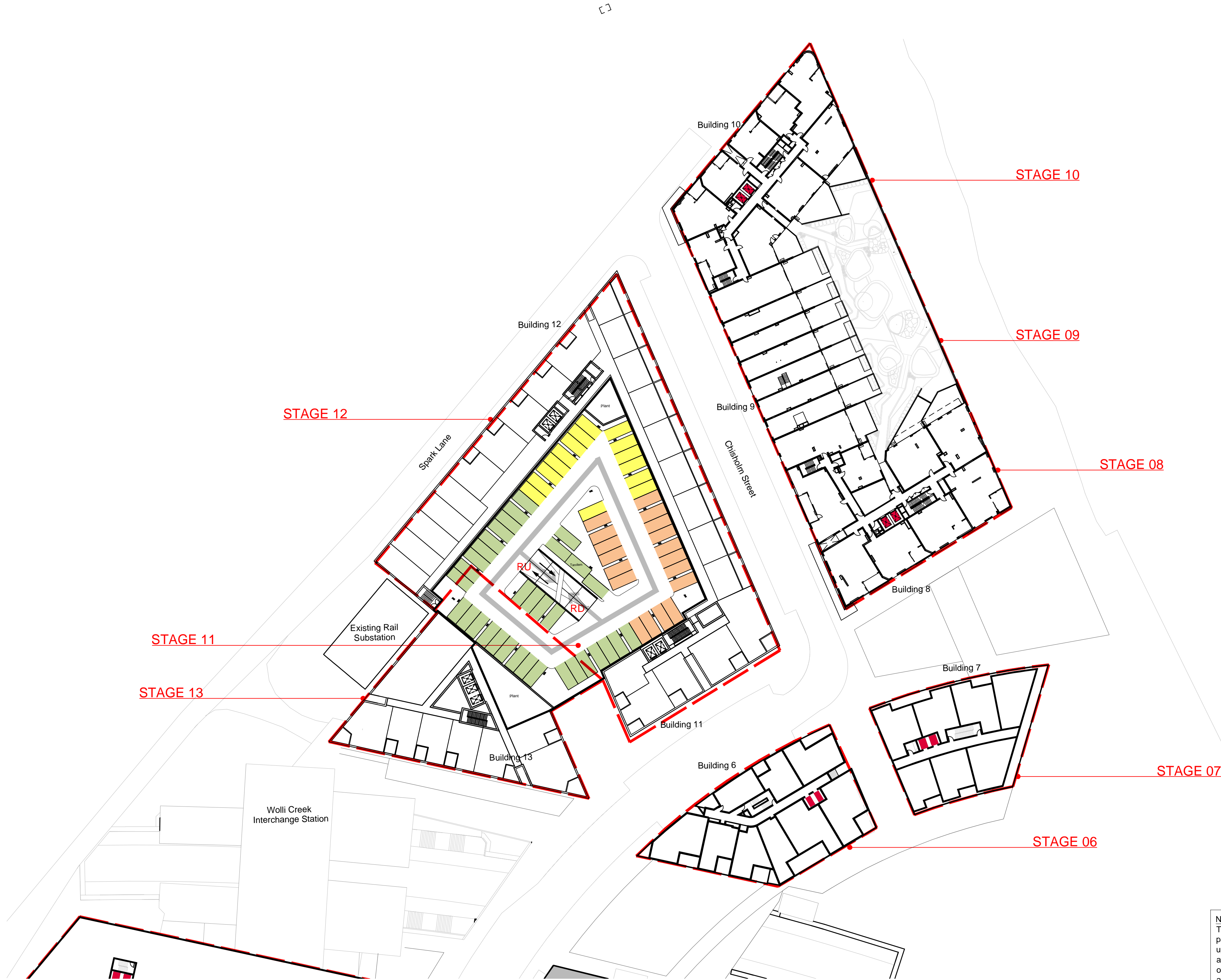
**Sydney** 1/243 Liverpool Street  
East Sydney NSW 2010 Australia  
T 02 8354 5100 F 02 8354 5199  
email syd@batesmart.com.au  
http://www.batesmart.com.au

**Melbourne** 1 Nicholson Street  
Melbourne VIC 3000 Australia  
T 03 8664 6200 F 03 8664 6300  
email melb@batesmart.com.au  
http://www.batesmart.com.au

Bates Smart Pty Ltd ABN 70 004 999 400






**BATESSMART**





NOTE:  
This diagram outlines the current strategy for the provision of parking across the Discovery Point site. This plan will be updated with each application. The exact location of parking allocation to specific uses/buildings will be determined as part of subsequent subdivision applications. The location of allocated spaces if therefore indicative at this stage and subject to change.

FOR INFORMATION  
NOT FOR APPROVAL

				REV 13	REV 13	REV 13	REV 13	
				for benefit of stage				
KEY		Stage 6 Arc	Stage 7	Stage 8-10	Stage 11	Stage 12	Stage 13	Total Provided
 Existing stage already constructed (Greenbank, Verge & Vine)		Resi	Resi	Resi	Resi	Resi	Resi	
 Discovery Point basement stages	6	79	1	-	-	-	-	80
 Vehicle Circulation	7	-	69	-	-	-	-	69
Access / Egress	8	-	-	286	-	-	-	286
Dead End	9	-	-		-	-	-	
RD Ramp Down	10	-	-		-	-	-	
RU Ramp up	11	-	-	-	121	116	162	399
 CW Carwash Bay	12							
 VP Visitor Parking	13	-	-	-	-	-	72	72
	Total prov	79	70	286	121	116	234	906

Discovery Point, Wolli Creek  
Indicative Carpark Strategy  
North Precinct  
Level 02

Scale	1:500@A1, 1:1000@A3	
Drawn	KW	Checked MA
Project No.	S11191	
Status	Issue for Review	
Plot Date	21.03.2014	
Plot File		
Drawing No.	CMP-N-L02[01]	Revision

Sydney 1/243 Liverpool Street  
East Sydney NSW 2010 Australia  
T 02 8354 5100 F 02 8354 5199  
email sydl@batesmart.com.au  
http://www.batesmart.com.au

Melbourne 1 Nicholson Street  
Melbourne VIC 3000 Australia  
T 03 8664 6200 F 03 8664 6300  
email melb@batesmart.com.au  
http://www.batesmart.com.au

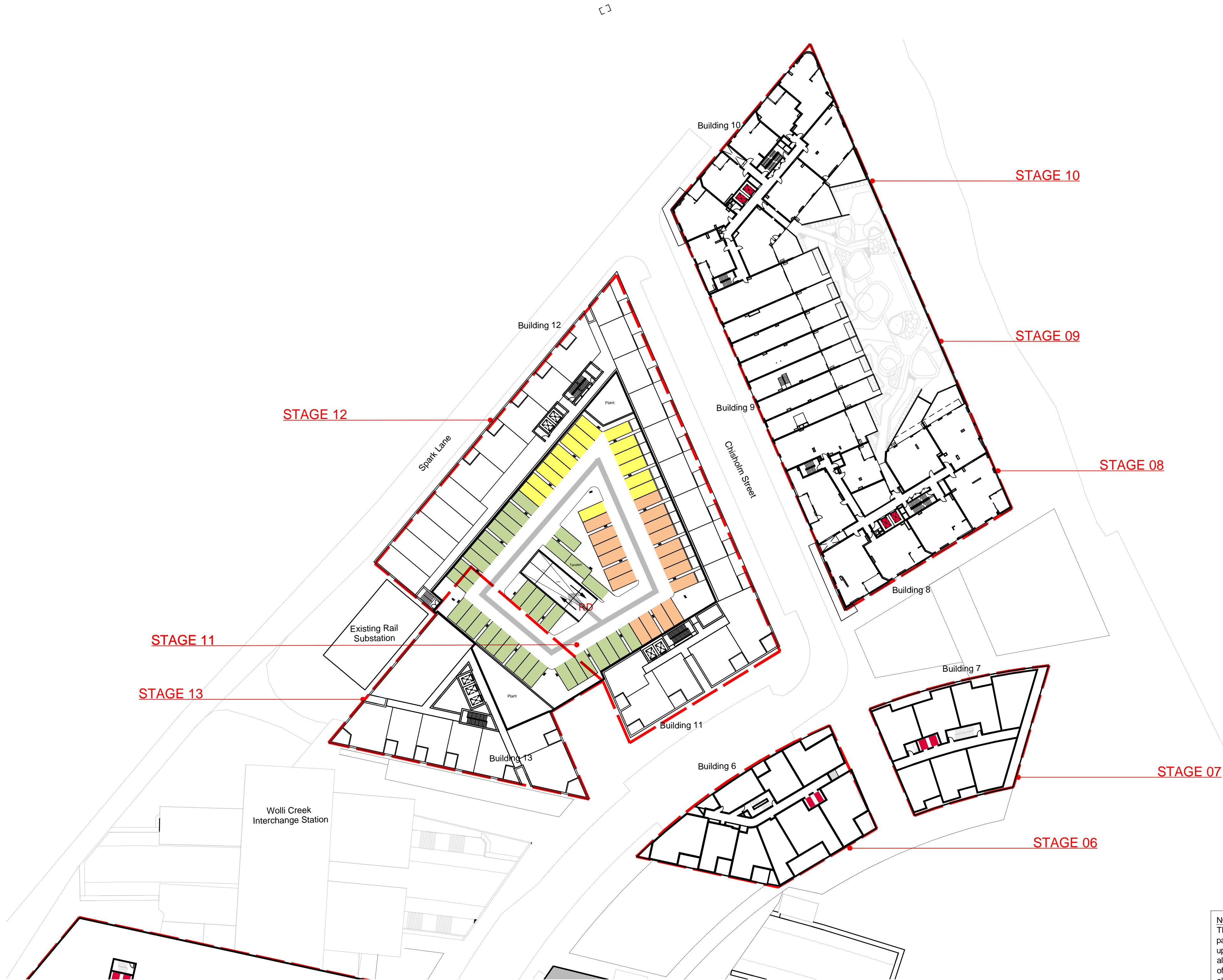
Bates Smart Pty Ltd ABN 70 004 999 400

BATESSMART™

01	21.03.14	First Issue	KW	MA
Revision	Date	Description	Initial	Checked

Check all dimensions and site conditions prior to commencement of any work, the purchase or ordering of any materials, fittings, plant, services or equipment and the preparation of shop drawings and/or the fabrication of any components.  
Do not scale drawings - refer to figured dimensions only. Any discrepancies shall immediately be referred to the architect for clarification.  
All drawings may not be reproduced or distributed without prior permission from the architect.





NOTE:  
This diagram outlines the current strategy for the provision of parking across the Discovery Point site. This plan will be updated with each application. The exact location of parking allocation to specific uses/buildings will be determined as part of subsequent subdivision applications. The location of allocated spaces if therefore indicative at this stage and subject to change.

FOR INFORMATION  
NOT FOR APPROVAL

KEY	REV 13   REV 13   REV 13   REV 13						
	for benefit of stage						Total Provided
	Stage 6 Arc	Stage 7	Stage 8-10	Stage 11	Stage 12	Stage 13	
Existing stage already constructed (Greenbank, Verge & Vine)	Resi	Resi	Resi	Resi	Resi	Resi	
Discovery Point basement stages	6	79	1	-	-	-	80
Vehicle Circulation	7	-	69	-	-	-	69
Access / Egress	8	-	-	286	-	-	286
Dead End	9	-	-	-	-	-	
Ramp Down	10	-	-	-	-	-	
Ramp up	11	-	-	-	121	116	399
Carwash Bay	12	-	-	-	-	162	
Visitor Parking	13	-	-	-	-	72	72
	Total prov	79	70	286	121	116	234
							906

Discovery Point, Wolli Creek  
Indicative Carpark Strategy  
North Precinct  
Level 03

Scale	1:500@A1, 1:1000@A3		
Drawn	KW	Checked	MA
Project No.	S11191		
Status	Issue for Review		
Plot Date	21.03.2014		
Plot File			
Drawing No.	CMP-N-L03[01]		
		Revision	

Sydney 1/243 Liverpool Street  
East Sydney NSW 2010 Australia  
T 02 8354 5100 F 02 8354 5199  
email syd@batesmart.com.au  
http://www.batesmart.com.au

Melbourne 1 Nicholson Street  
Melbourne VIC 3000 Australia  
T 03 8664 6200 F 03 8664 6300  
email melb@batesmart.com.au  
http://www.batesmart.com.au

Bates Smart Pty Ltd ABN 70 004 999 400

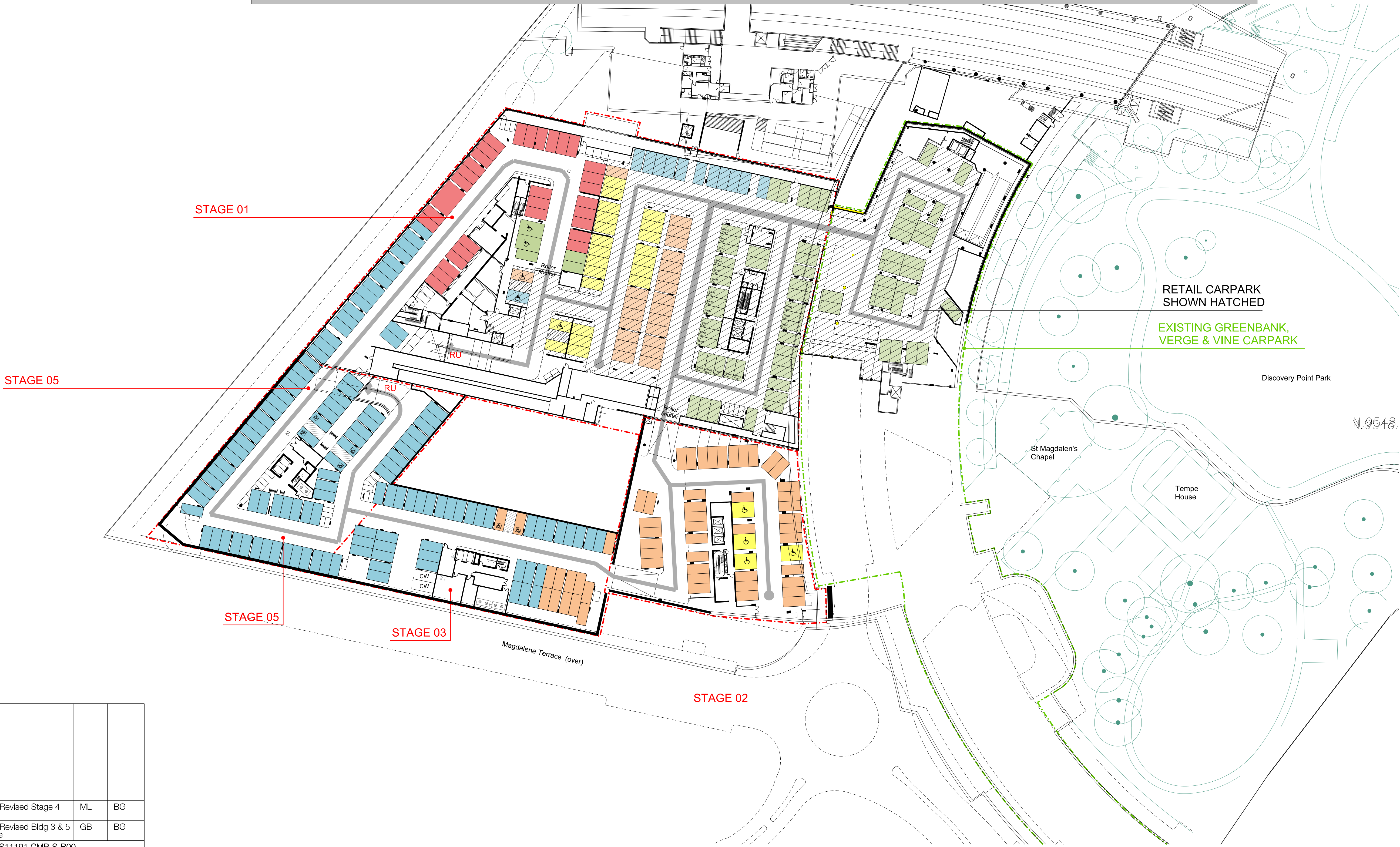
BATESSMART™

01	21.03.14	First Issue	KW	MA
Revision	Date	Description	Initial	Checked

Check all dimensions and site conditions prior to commencement of any work, the purchase or ordering of any materials, fittings, plant, services or equipment and the preparation of shop drawings and/or the fabrication of any components.  
Do not scale drawings - refer to figured dimensions only. Any discrepancies shall immediately be referred to the architect for clarification.  
All drawings may not be reproduced or distributed without prior permission from the architect.



REFER TO CMP-N-B00 FOR NORTH PRECINCT



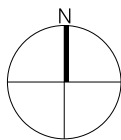
GroupGSA Document Issue	13	14.05.14	Issue for Information - Revised Stage 4 spaces, revised table	ML	BG
	12	17.01.14	Issue for Information - Revised Bldg 3 & 5 B0 layout, revised table	GB	BG
	Previous Bates Smart Doc. Ref. S11191 CMP-S-B00				
Bates Smart Document Issue	11	19.02.13	Table revised (Bldg 4, 5, 1C retail)	MA	MP
	10	15.02.13	DSZ Parking Deleted, Bldg2 B0 added, Bldg4 Level 1 added	MA	MP
	09	03.09.12	Draft Issue	AW	MP
	08	19.07.12	Draft Issue	AW	MP
	07	09.07.12	Draft Issue	AW	MP
	06	29.02.12	Draft Issue	AW	MA
	05	27.02.12	Draft Issue	AW	MA
	04	03.02.12	Draft Issue	AW	MA
	03	24.01.12	Draft Issue	AW	MA
	02	10.08.11	Issue for Information - Including existing carpark allocations for Greenbank, Verge & Vine	AW	MA
Revision	01	20.07.11	Issue for Information	MD	MP
	Revision	Date	Description	Initial	Check

Stage	for benefit of stage													Total Provided
	Ex: Greenbank/Verge/Vine			Stage 1: Linc		Stage 2		Stage 3		Stage 4	Stage 5		Stage 14	
	Resi	Visitor	Retail	Resi	Retail	Resi	Retail	Resi	Retail	Resi	Resi	Retail	Comm	
Existing	339	4	20	3	25	19		27				5	92	534
1				108	43		22		23	28	24	12		260
2						171		41						212
3								13			36			49
4										28				28
5											66			66
14														0
Total Prov	339	4	20	111	68	190	22	81	23	62	120	17	92	1149
CP min.	339	4	20	84	68	160	22	72	23	36	109	17	92	1046

- KEY
- Existing stage already constructed (Greenbank, Verge & Vine)
  - Discovery Point basement stages
  - Vehicle Circulation
  - Access/Egress
  - Dead End
  - Ramp Down
  - Ramp Up
  - Carwash Bay
  - Visitor Parking
  - 2 Car Stacker
  - 5 Car Stacker

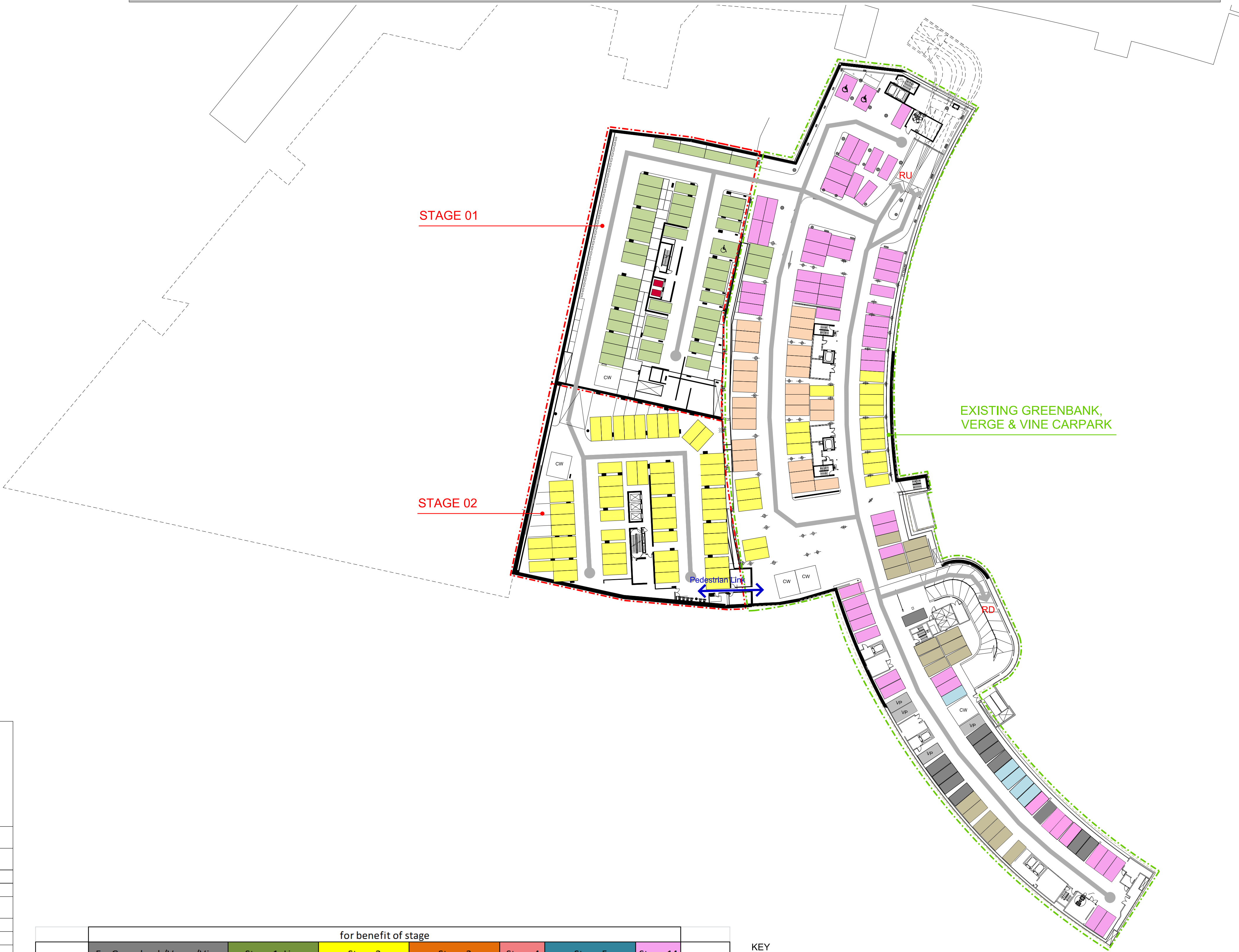
NOTE:  
This diagram outlines the current strategy for the provision of parking across the Discovery Point site. This plan will be updated with each application. The exact location of parking allocation to specific uses/buildings will be determined as part of subsequent subdivision applications. The location of allocated spaces is therefore indicative at this stage and subject to change.

FOR INFORMATION  
NOT FOR APPROVAL





REFER TO CMP-N-B01 FOR NORTH PRECINCT



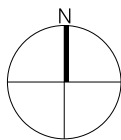
GroupGSA Document Issue					
	12	14.05.14	Issue for Information - Revised Bldg 5 & Stage 14 B0 layout, table revised	ML	BG
	11	17.01.14	Issue for Information - Revised Bldg 3 & 5 B0 layout, revised table	GB	BG
Bates Smart Document Issue	Previous Bates Smart Doc. Ref. S11191 CMP-S-B01				
	10	19.02.13	Table revised (Bldg 4, 5, 1C retail)	MA	MP
	09	15.02.13	DSZ Parking Deleted, Bldg2 B0 added, Bldg4 Level 1 added	MA	MP
	08	03.09.12	Draft Issue	AW	MP
	07	09.07.12	Draft Issue	AW	MP
	06	29.02.12	Draft Issue	AW	MA
	05	27.02.12	Draft Issue	AW	MA
	04	03.02.12	Draft Issue	AW	MA
	03	24.01.12	Draft Issue	AW	MA
	02	10.08.11	Issue for Information - Including existing carpark allocations for Greenbank, Verge & Vine	AW	MA
	01	20.07.11	Issue for Information	MD	MP
	P4	27.06.11	Draft Issue	APW	MP
	P3	17.06.11	Draft Issue	APW	MP
	P2	06.05.11	Draft Issue	APW	MP
	P1	18.04.11	Draft Issue	APW	MP
	Revision	Date	Description	Initial	Check

Stage	for benefit of stage													Total Provided
	Ex: Greenbank/Verge/Vine			Stage 1: Linc		Stage 2		Stage 3		Stage 4	Stage 5		Stage 14	
	Resi	Visitor	Retail	Resi	Retail	Resi	Retail	Resi	Retail	Resi	Resi	Retail	Comm	
Existing	339	4	20	3	25	19		27				5	92	534
1				108	43		22		23	28	24	12		260
2						171		41						212
3								13			36			49
4										28				28
5											66			66
14														0
Total Prov	339	4	20	111	68	190	22	81	23	62	120	17	92	1149
CP min.	339	4	20	84	68	160	22	72	23	36	109	17	92	1046

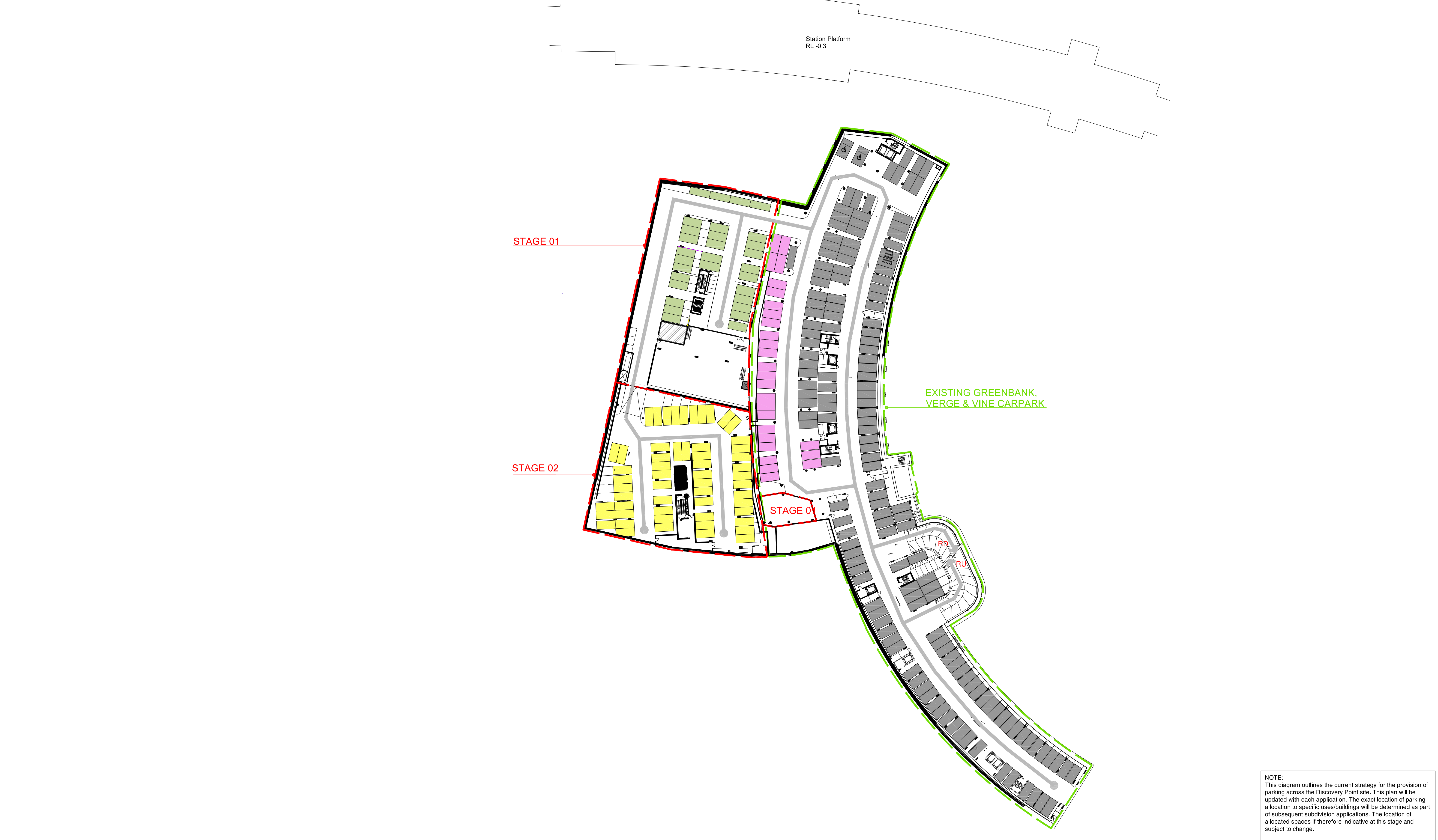
- KEY
- Existing stage already constructed (Greenbank, Verge & Vine)
  - Discovery Point basement stages
  - Vehicle Circulation
  - Access/Egress
  - Dead End
  - RD Ramp Down
  - RU Ramp Up
  - CW Carwash Bay
  - VP Visitor Parking
  - 2S 2 Car Stacker
  - 5S 5 Car Stacker

NOTE:  
This diagram outlines the current strategy for the provision of parking across the Discovery Point site. This plan will be updated with each application. The exact location of parking allocation to specific uses/buildings will be determined as part of subsequent subdivision applications. The location of allocated spaces is therefore indicative at this stage and subject to change.

FOR INFORMATION  
NOT FOR APPROVAL







NOTE:  
This diagram outlines the current strategy for the provision of parking across the Discovery Point site. This plan will be updated with each application. The exact location of parking allocation to specific uses/buildings will be determined as part of subsequent subdivision applications. The location of allocated spaces if therefore indicative at this stage and subject to change.

FOR INFORMATION  
NOT FOR APPROVAL

KEY

- Existing stage already constructed (Greenbank, Verge & Vine)
- Discovery Point basement stages
- Vehicle Circulation
- Access / Egress
- Dead End
- Ramp Down
- Ramp up
- Canwash Bay
- Visitor Parking
- 2 Car Stackers
- 5 Car Stackers

Stage	for benefit of stage													Total Provided
	Ex: Greenbank/Verge/Vine			Stage 1: Linc		Stage 2		Stage 3		Stage 4		Stage 5		Stage 14
	Resi	Visitor	Retail	Resi	Retail	Resi	Retail	Resi	Retail	Resi	Retail	Resi	Retail	Comm
Existing	339	4	20	3	25	19	-	-	-	-	-	-	-	142
1	-	-	-	108	41	-	21	-	21	28	23	13	-	255
2	-	-	-	-	-	171	-	41	-	-	-	-	-	212
3	-	-	-	-	-	-	-	26	-	-	27	-	-	53
4	-	-	-	-	-	-	-	-	28	-	-	-	-	28
5	-	-	-	-	-	-	-	-	-	64	-	-	-	64
14	-	-	-	-	-	-	-	-	-	-	-	-	-	0
Total Prov	339	4	20	111	66	190	21	67	21	56	114	13	142	1164

10	19.02.13	Table revised (Bldg 4, 5, 1C retail)	MA	MP
09	15.02.13	DSZ Parking deleted, Bldg2 B0 added, Bldg4 Level 1 added	MA	MP
08	03.09.12	Draft Issue	MA	MP
07	09.07.12	Draft Issue	MA	MP
06	29.02.12	Draft Issue	AW	MA
05	27.02.12	Draft Issue	AW	MA
04	03.02.12	Draft Issue	AW	MA
03	24.01.12	Draft Issue	AW	MA
02	10.08.11	Issue for Information - Including existing carpark allocations for Greenbank, Verge & Vine	AV	MP
01	20.07.11	Issue for Information	MD	MP
P4	27.06.11	Draft Issue	APW	MP
P3	17.05.11	Draft Issue	APW	MP
P2	06.05.11	Draft Issue	APW	MP
P1	18.04.11	Issue for Review	APW	MP
Revision	Date	Description	Initial	Checked

Discovery Point, Wolli Creek

Indicative Carpark Strategy

South Precinct - Basement Level 02

RL -3.70m

Check all dimensions and site conditions prior to commencement of any work, the purchase or ordering of any materials, fittings, plant, services or equipment and the preparation of shop drawings and/or the fabrication of any components.

Do not scale drawings - refer to figured dimensions only. Any discrepancies shall immediately be referred to the architect for clarification.

All drawings may not be reproduced or distributed without prior permission from the architect.

Scale	1:500 @ A1, 1:1000 @ A3
Drawn	TG
Checked	MP
Project No.	S11191
Status	For Information
Plot Date	19.02.2013
Plot File	
Drawing No.	CMP-S-B02[10]
Revision	

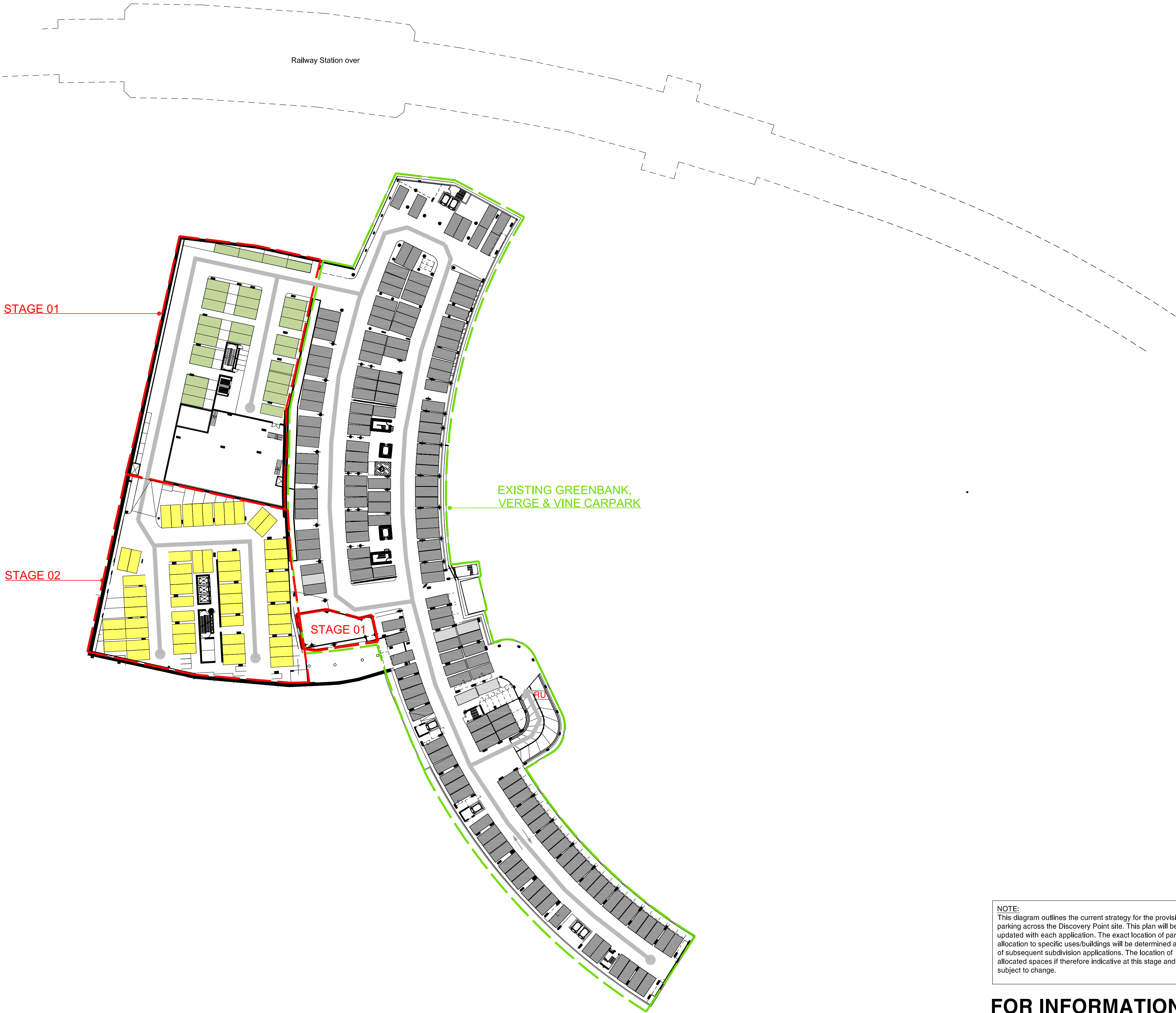
Sydney 1/243 Liverpool Street  
East Sydney NSW 2010 Australia  
T 02 8354 5100 F 02 8354 5199  
email syd@batesmart.com.au  
http://www.batesmart.com.au

Melbourne 1 Nicholson Street  
Melbourne VIC 3000 Australia  
T 03 8664 6200 F 03 8664 6300  
email melb@batesmart.com.au  
http://www.batesmart.com.au

Bates Smart Pty Ltd ABN 70 004 999 400

BATESSMART™





NOTE:  
This diagram outlines the current strategy for the provision of parking across the Discovery Point site. This plan will be updated with each application. The exact location of parking allocation to specific uses/buildings will be determined as part of subsequent subdivision applications. The location of allocated spaces if therefore indicative at this stage and subject to change.

**FOR INFORMATION  
NOT FOR APPROVAL**

KEY

- Existing stage already constructed (Greenbank, Verge & Vine)
- Discovery Point basement stages
- Vehicle Circulation
- Access / Egress
- Dead End
- RD Ramp Down
- RU Ramp up
- CW Carwash Bay
- VP Visitor Parking
- 2S 2 Car Stackers
- 5S 5 Car Stackers

Stage	for benefit of stage													Total Provided
	Ex: Greenbank/Verge/Vine			Stage 1: Linc		Stage 2		Stage 3		Stage 4	Stage 5		Stage 14	
	Resi	Visitor	Retail	Resi	Retail	Resi	Retail	Resi	Retail	Resi	Resi	Retail	Comm	
Existing	339	4	20	3	25	19	-	-	-	-	-	-	142	552
1	-	-	-	108	41	-	21	-	21	28	23	13	-	255
2	-	-	-	-	-	171	-	41	-	-	-	-	-	212
3	-	-	-	-	-	-	-	26	-	-	27	-	-	53
4	-	-	-	-	-	-	-	-	28	-	-	-	-	28
5	-	-	-	-	-	-	-	-	-	64	-	-	-	64
14	-	-	-	-	-	-	-	-	-	-	-	-	-	0
Total Prov	339	4	20	111	66	190	21	67	21	56	114	13	142	1164

10	19.02.13	Table revised (Bldg 4, 5, 1C retail)	MA	MP
09	15.02.13	DSZ Parking deleted, Bldg2 B0 added, Bldg4 Level 1 added	MA	MP
08	03.09.12	Draft Issue	MA	MP
07	09.07.12	Draft Issue	MA	MP
06	29.02.12	Draft Issue	AW	MA
05	27.02.12	Draft Issue	AW	MA
04	03.02.12	Draft Issue	AW	MA
03	24.01.12	Draft Issue	AW	MA
02	10.08.11	Issue for Information - Including existing carpark allocations for Greenbank, Verge & Vine	AV	MP
01	20.07.11	Issue for Information	MD	MP
P4	27.06.11	Draft Issue	APW	MP
P3	17.05.11	Draft Issue	APW	MP
P2	06.05.11	Draft Issue	APW	MP
P1	18.04.11	Issue for Review	APW	MP
Revision	Date	Description	Initial	Checked

Discovery Point, Wolli Creek  
Indicative Carpark Strategy  
South Precinct - Basement Level 03  
RL -6.40m

Check all dimensions and site conditions prior to commencement of any work, the purchase or ordering of any materials, fittings, plant, services or equipment and the preparation of shop drawings and/or the fabrication of any components.  
Do not scale drawings - refer to figured dimensions only. Any discrepancies shall immediately be referred to the architect for clarification.  
All drawings may not be reproduced or distributed without prior permission from the architect.

Scale	1:500@A1, 1:1000@A3	
Drawn	TG	Checked MP
Project No.	S11191	
Status	For Information	
Plot Date	19.02.2013	
Plot File		
Drawing No.	CMP-S-B03[10]	
Revision		

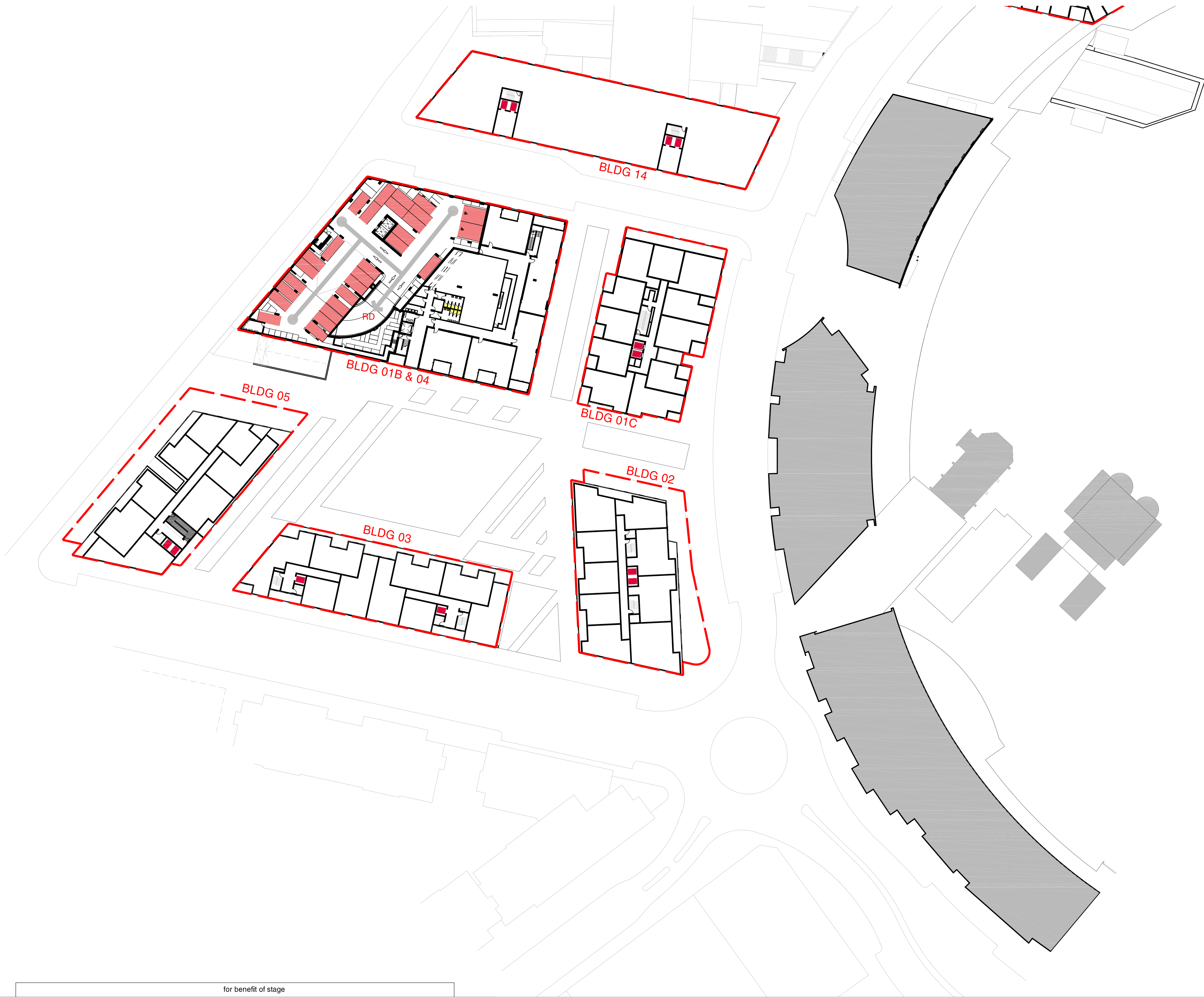
**Sydney** 1/243 Liverpool Street  
East Sydney NSW 2010 Australia  
T 02 8354 5100 F 02 8354 5199  
email syd@batesmart.com.au  
http://www.batesmart.com.au

**Melbourne** 1 Nicholson Street  
Melbourne VIC 3000 Australia  
T 03 8664 6200 F 03 8664 6300  
email melb@batesmart.com.au  
http://www.batesmart.com.au

Bates Smart Pty Ltd ABN 70 004 999 400

**BATESSMART**





NOTE:  
This diagram outlines the current strategy for the provision of parking across the Discovery Point site. This plan will be updated with each application. The exact location of parking allocation to specific uses/buildings will be determined as part of subsequent subdivision applications. The location of allocated spaces if therefore indicative at this stage and subject to change.

**FOR INFORMATION  
NOT FOR APPROVAL**

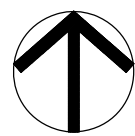
KEY

- Existing stage already constructed (Greenbank, Verge & Vine)
- Discovery Point basement stages
- Vehicle Circulation
- Access / Egress
- Dead End
- RD Ramp Down
- RU Ramp up
- CW Carwash Bay
- VP Visitor Parking
- 2S 2 Car Stacker
- 5S 5 Car Stacker

Stage	for benefit of stage														Total Provided
	Ex: Greenbank/Verge/Vine			Stage 1: Linc		Stage 2		Stage 3		Stage 4		Stage 5		Stage 14	
	Resi	Visitor	Retail	Resi	Retail	Resi	Retail	Resi	Retail	Resi	Retail	Resi	Retail	Comm	
Existing	339	4	20	3	25	19	-	-	-	-	-	-	-	142	552
1	-	-	-	108	41	-	21	-	21	28	23	13	-	-	255
2	-	-	-	-	-	171	-	41	-	-	-	-	-	-	212
3	-	-	-	-	-	-	-	26	-	-	27	-	-	-	53
4	-	-	-	-	-	-	-	-	-	28	-	-	-	-	28
5	-	-	-	-	-	-	-	-	-	-	64	-	-	-	64
14	-	-	-	-	-	-	-	-	-	-	-	-	-	-	0
Total Prov	339	4	20	111	66	190	21	67	21	56	114	13	142	-	1164

02	19.02.13	Table amended	MA	MP
01	19.02.13	First Issue	MA	MP
Revision	Date	Description	Initial	Checked

Discovery Point, Wolli Creek  
Indicative Carpark Strategy  
South Precinct  
Level 01



Check all dimensions and site conditions prior to commencement of any work, the purchase or ordering of any materials, fittings, plant, services or equipment and the preparation of shop drawings and/or the fabrication of any components.  
Do not scale drawings - refer to figured dimensions only. Any discrepancies shall immediately be referred to the architect for clarification.  
All drawings may not be reproduced or distributed without prior permission from the architect.

Scale	1:500@A1, 1:1000@A3		
Drawn	TG	Checked	MP
Project No.	S11191		
Status	For Information		
Plot Date	19.02.2013		
Plot File			
Drawing No.	CMP-S-L01[02]	Revision	

**Sydney** 1/243 Liverpool Street  
East Sydney NSW 2010 Australia  
T 02 8354 5100 F 02 8354 5199  
email syd@batesmart.com.au  
http://www.batesmart.com.au

**Melbourne** 1 Nicholson Street  
Melbourne VIC 3000 Australia  
T 03 8664 6200 F 03 8664 6300  
email melb@batesmart.com.au  
http://www.batesmart.com.au

Bates Smart Pty Ltd ABN 70 004 999 400

**BATESSMART**