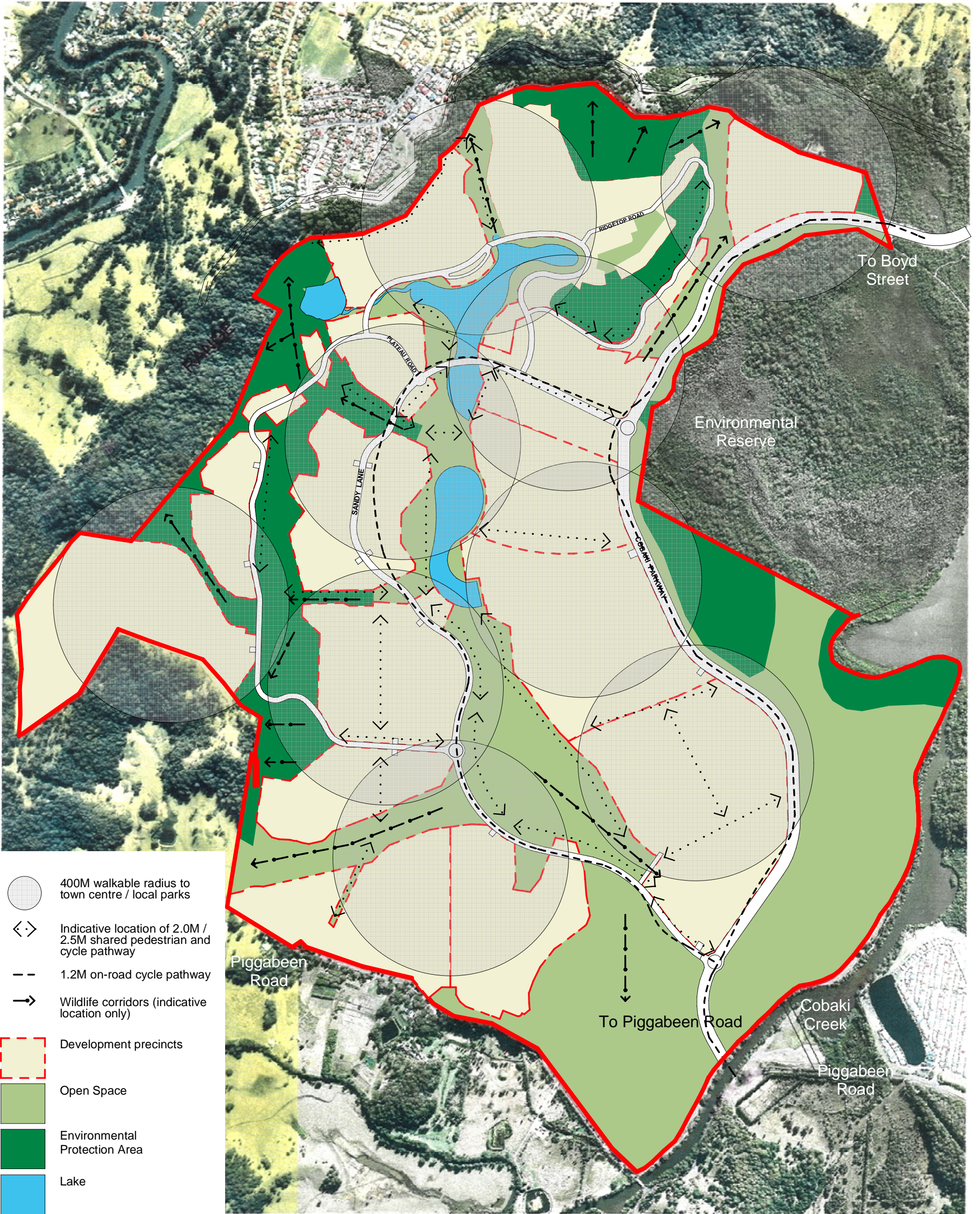
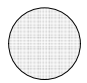

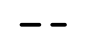
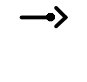






# Open Space Network Plan



-  400M walkable radius to town centre / local parks
-  Indicative location of 2.0M / 2.5M shared pedestrian and cycle pathway
-  1.2M on-road cycle pathway
-  Wildlife corridors (indicative location only)
-  Development precincts
-  Open Space
-  Environmental Protection Area
-  Lake

