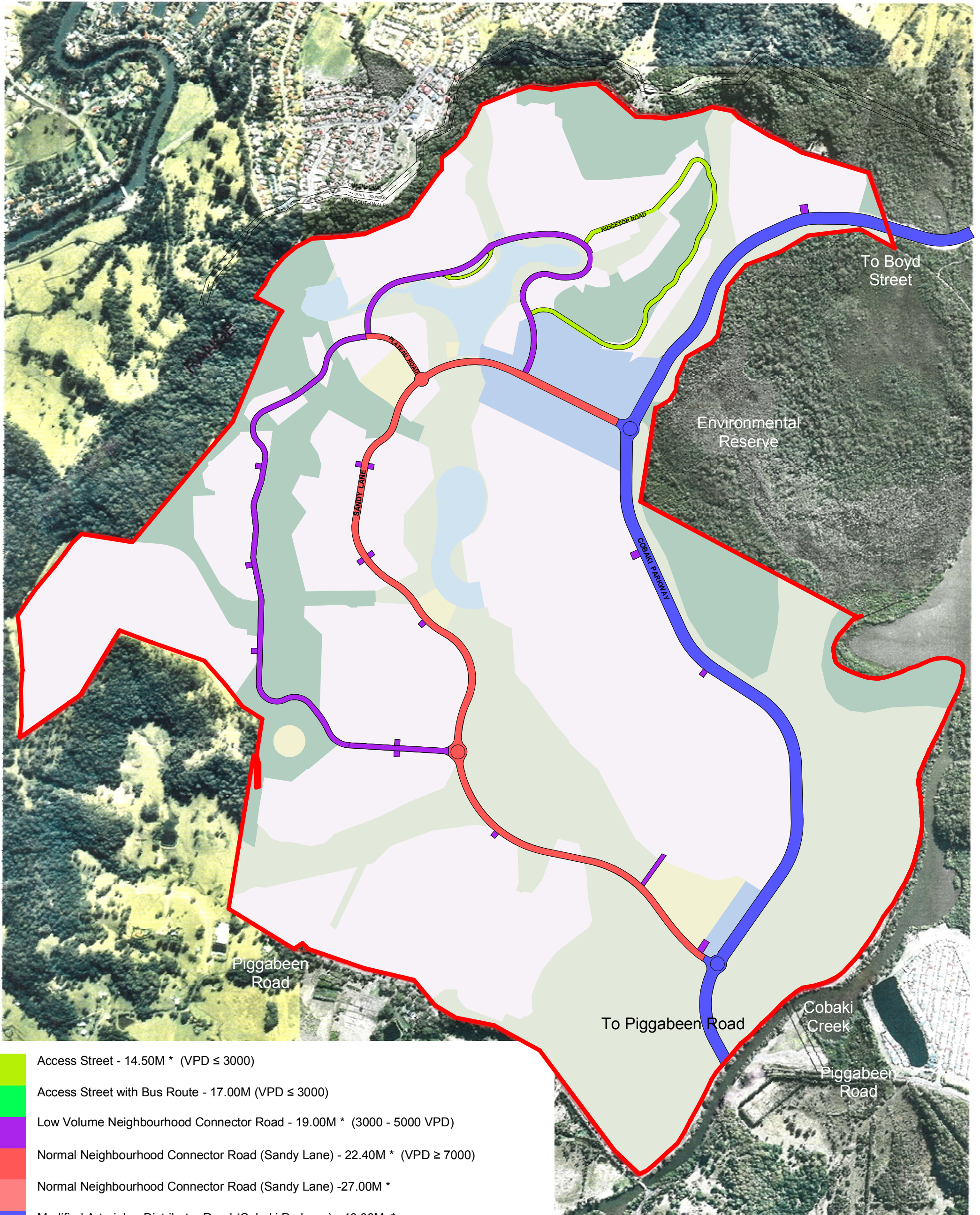


Access Network Plan



- Access Street - 14.50M * (VPD ≤ 3000)
- Access Street with Bus Route - 17.00M (VPD ≤ 3000)
- Low Volume Neighbourhood Connector Road - 19.00M * (3000 - 5000 VPD)
- Normal Neighbourhood Connector Road (Sandy Lane) - 22.40M * (VPD ≥ 7000)
- Normal Neighbourhood Connector Road (Sandy Lane) - 27.00M *
- Modified Arterial or Distributor Road (Cobaki Parkway) - 40.00M *