

Liverpool Range Wind Farm

Project Update No 7 | May 2012

Latest News and Update

- The development team has been regularly visiting the area discussing the wind farm design and consulting with landowners. Please contact us if you would like to meet with a team member to discuss the project.
- Four new wind monitoring masts will be installed across the site in the coming months bringing the total number of monitoring masts to six.
- Powerline discussions with landowners and stakeholders are underway regarding the wind farms connection to the electricity grid near Ulan.
- Arrangements are underway to conduct a further environmental survey across the site in the upcoming spring/summer period following winter.
- A reminder that project details are available on our website at www.epuron.com.au and we welcome comments or feedback.

Community Consultation Committee

While project consultation has been underway for some time, Epuron is now seeking to establish a Community Consultation Committee (CCC) that will involve participation of the local community. The first meeting will be held in a few months and we look forward to you getting involved.

The purpose and objectives of the CCC are:

- To enable Epuron to formally provide the local community with information about the proposal;
- To enable the community to express and for Epuron to understand any concerns regarding the potential impacts of the proposal;
- To enable Epuron to consider whether and how to incorporate any suggestions and feedback into the design of the proposal;
- To demonstrate how and where feedback has been incorporated and resulted in amendments to the proposal; and,
- To formally advise potential community benefits that can be integrated into the proposal.

Membership of the CCC is targeted to include the following;

- An independent chairperson;
- A representative of the involved wind farm landowners;
- A representative of the non involved neighbouring landowners;
- Representation from key local stakeholder groups or associations;
- A representative from each of the local shire councils (Warrumbungle, Liverpool Plains, Upper Hunter and Mid-Western Regional); and
- Representatives from Epuron including the Project Manager.

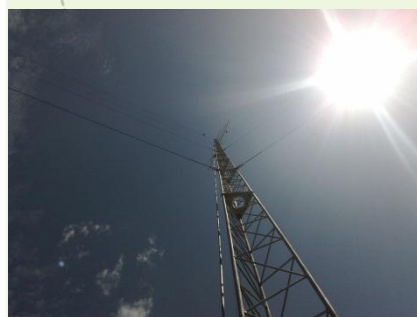
If you are interested in joining the CCC, please complete the Nomination Form enclosed and return to us. For further information on Epuron's Consultation Framework, please refer to details on our website at www.epuron.com.au/downloads.



High Quality Wind Resource on Site

The Liverpool Range site is located in a good wind resource area and the regular collection of wind data continues.

There are two existing wind monitoring masts that have been installed on the site for more than two years and analysis shows that favourable wind speeds exist for the development of a wind farm.



The wind monitoring masts and instruments are continually exposed to the harsh elements of our environment and must be inspected for wear. The masts are regularly checked and maintained by our in-house team of experts to make sure they remain in good operational condition.

Plans are underway to expand the wind monitoring program with four additional wind monitoring masts to be installed on site in the coming months.

Please send us your feedback

Write to us:

Liverpool Range Wind Farm
Level 11, 75 Miller Street
North Sydney NSW 2060

Email or Internet:

b.hall@epuron.com.au
www.epuron.com.au

Phone us:

02 8456 7400



Electricity Grid Connection

The proposed wind farm will involve the construction and operation of up to 550 wind turbines, together with associated control and maintenance buildings, civil works and electrical infrastructure. To deliver the renewable electricity to market it is necessary to connect into Transgrid's existing 330kV Wollar-Wellington transmission line located 30-40 kilometres south of the wind farm near Ulan Road.

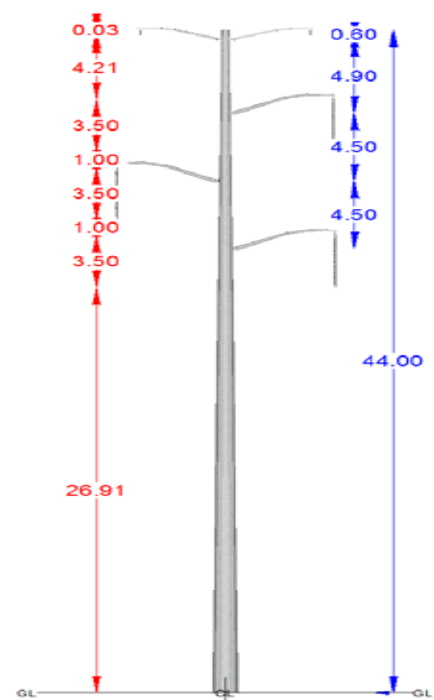
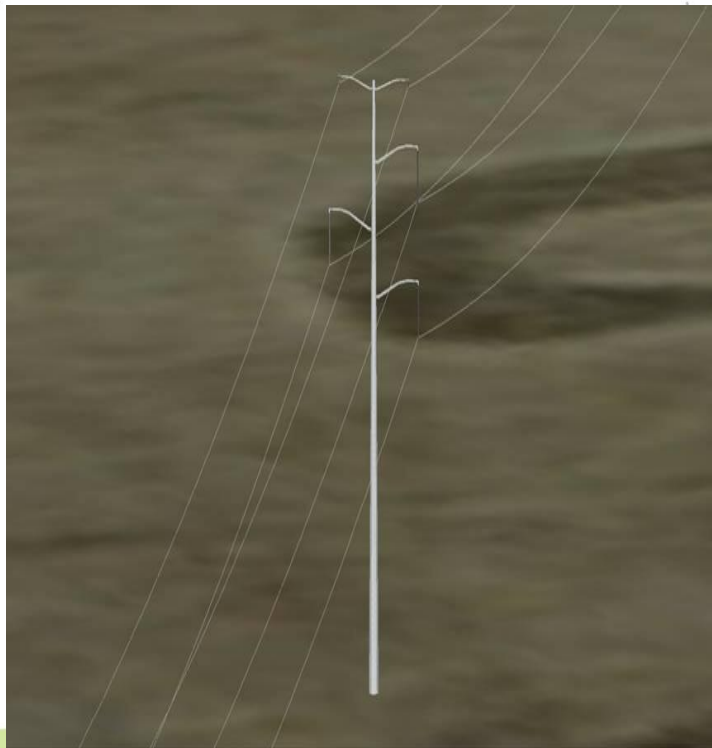
To connect to the transmission line, Epuron will need to construct a new powerline from the southern boundary of the wind farm and a new substation adjacent to the transmission line near Ulan. A number of powerline easement corridors are under assessment and the preferred route will be detailed in the final Environmental Assessment to be placed on public exhibition and assessed by the Department of Planning before a determination is made.

Epuron has engaged an electrical consultant to undertake a concept design of the preferred powerline using both steel towers and steel poles. As the Project proposes to connect to the existing transmission line, Epuron proposes to construct a new 330kV powerline including access tracks.

Powerline structures come in many designs however most are either a steel or concrete pole design or a steel lattice tower design. The type of design used may vary depending on the different ground conditions, carrying weights, strain angles and clearance requirements as well as local environmental conditions including local constraints (e.g. archaeological) and visual amenity.

Based on preliminary assessments, Epuron proposes to use a 330kV single circuit steel pole approximately 44 metres tall, an example of which is shown below. However, should further assessment determine that a single circuit steel pole is unsuitable for the Project, another structure that may be used is the double circuit steel pole which would be approximately 50 metres tall.

Epuron is currently meeting with landowners along the identified powerline route corridors to discuss the proposed powerline and the necessary easements required to construct the powerline and access tracks.



Figures. Illustration of proposed Single Circuit 330kV Steel Pole

Community Consultation Committee

Nomination Form

We are seeking nominations for members from the local community to join the Community Consultation Committee (CCC) for the Liverpool Range Wind Farm.

It is planned that the CCC will meet quarterly (or as otherwise required) at a local venue to be advised.

The purpose and objectives of the CCC are;

- To enable Epuron to formally provide the local community with information about the proposal;
- To enable the community to express and for Epuron to understand any concerns regarding the potential impacts of the proposal;
- To enable Epuron to consider whether and how to incorporate any suggestions and feedback into the design of the proposal;
- To demonstrate how and where feedback has been incorporated and resulted in amendments to the proposal; and,
- To formally advise potential community benefits that can be integrated into the proposal.

Nominees Role

Yes, I would like to nominate myself to join the CCC for the Liverpool Range Wind Farm in one of the following capacities.

Please tick the relevant box below.

- ☐ An independent chairperson
- ☐ A representative of the involved wind farm landowners
- ☒ A representative of the non involved neighbouring landowners
- ☐ Representation from key local stakeholder groups or associations (please provide details of group or association below)

Nominees Details

Name: _____

Address: _____

Phone: _____

Email: _____

Please provide reasons for your nomination: _____



Thank-You for your nomination

Should you require any further information please call us on **02 8456 7400**.

Please return this Nomination Form to:

Address:



Liverpool Range Wind Farm
Level 11, 75 Miller Street
North Sydney NSW 2060



Email or Internet:

b.hall@epuron.com.au
www.epuron.com.au