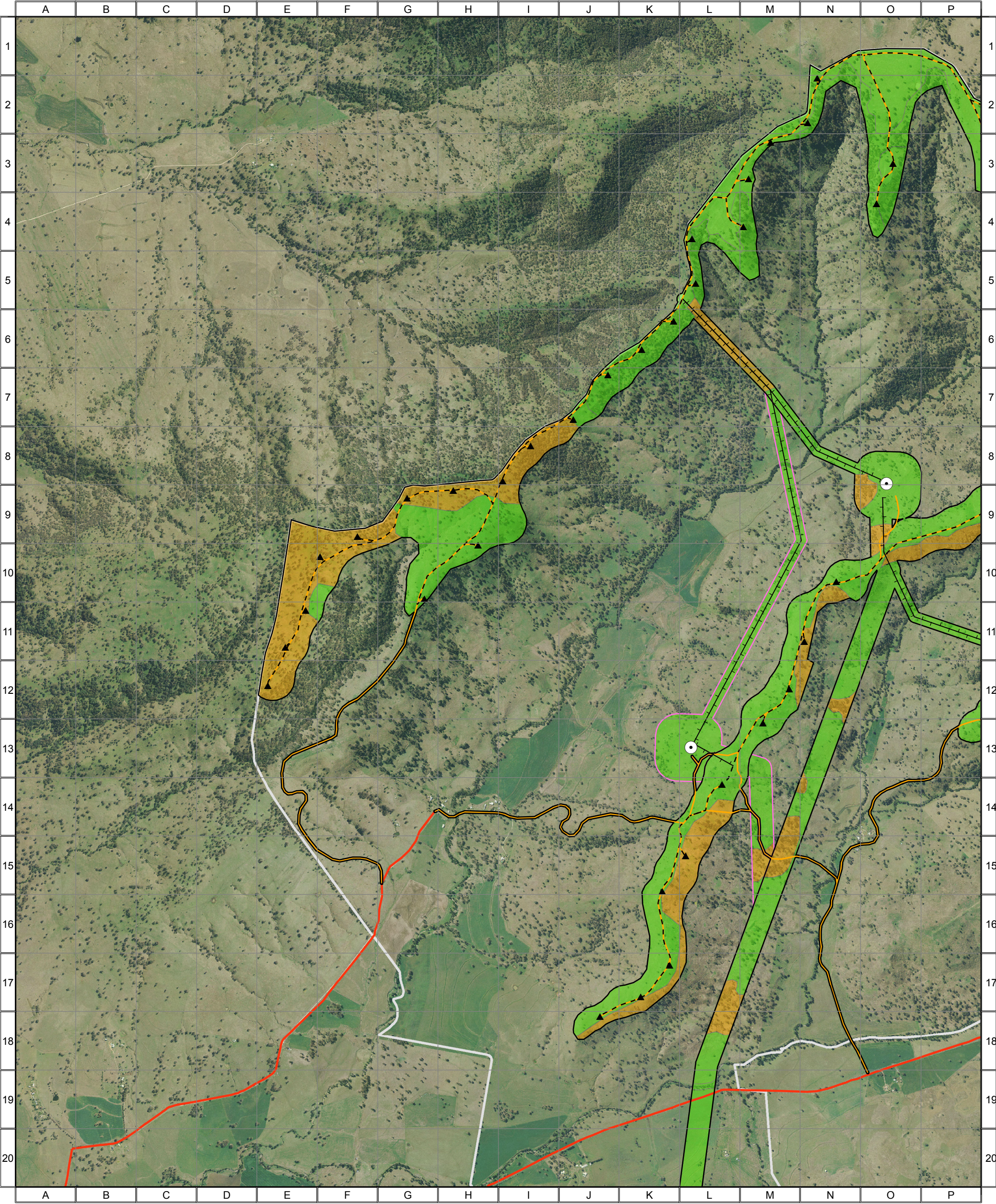


4777 - Liverpool Range (WF Study Area, Map 1) - Combined Flora and Fauna Constraints



Combined Constraints

- High
- Moderate
- Low

- Combined Survey Area (Preferred Infrastructure Layout)
- Combined Survey Area (Alternative Infrastructure Layout)

- Indicative Turbine Locations
- Substations
- Overhead Powerlines
- Underground Powerlines
- Proposed Tracks
- Existing Roads
- Wind Farm Site Boundary



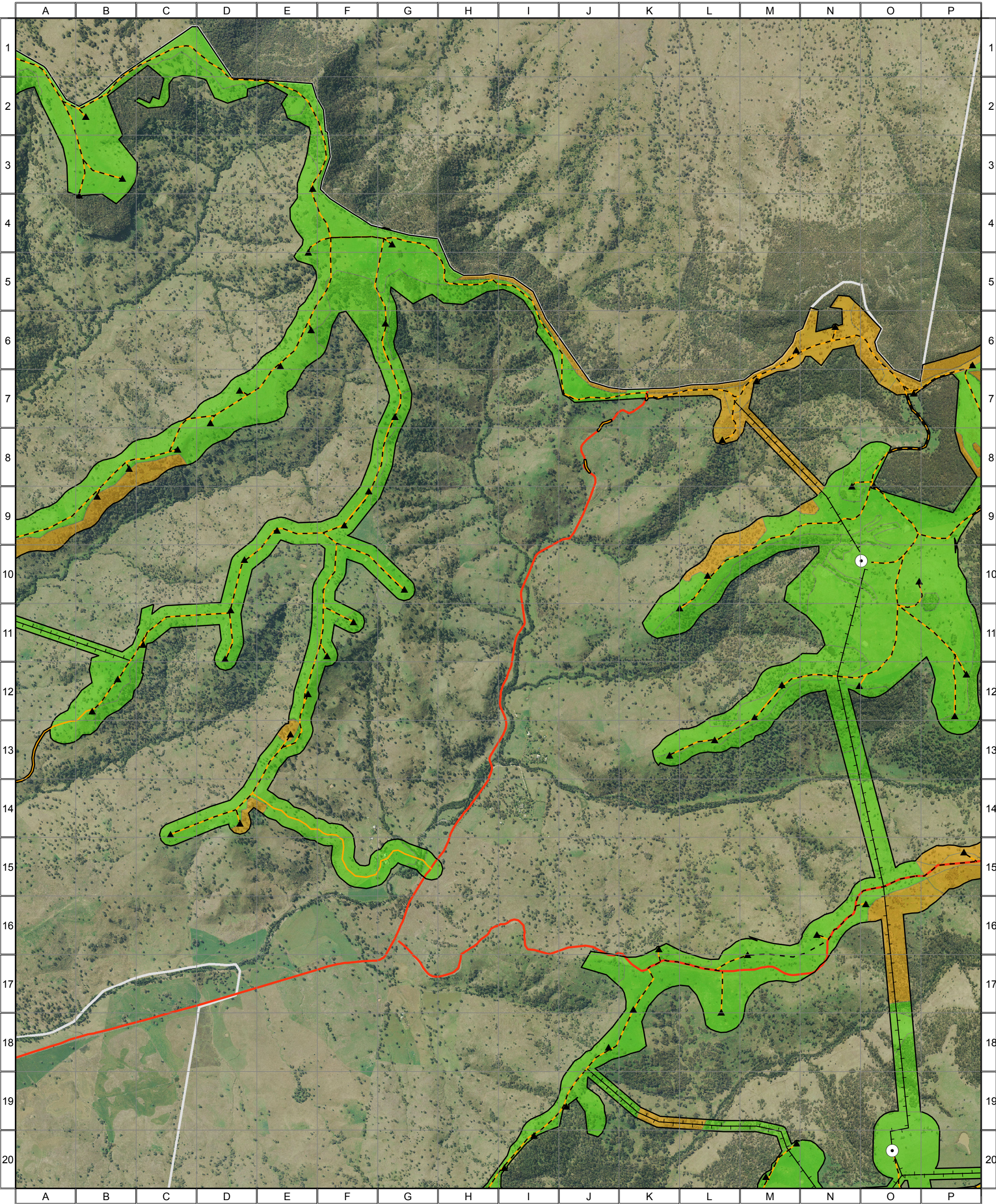
0 0.25 0.5 1 1.5 Kilometres

Approx. Scale @ A3 1:32500
Ref: 4777 - Liverpool Range Wind Farm
Produced by: Tom Hamilton
Date: 15 November 2013
Projection: GDA94 MGA Zone 55

Based on Infrastructure datasets provided by Epuron (2011-2013)
Aerial Photography provided by Epuron (Aug. 2011)
(C) Copyright Commonwealth of Australia (Geoscience Australia) 2008



4777 - Liverpool Range (WF Study Area, Map 2) - Combined Flora and Fauna Constraints



Combined Constraints

- High
- Moderate
- Low

Combined Survey Area (Preferred Infrastructure Layout)

- Indicative Turbine Locations
- Substations
- Overhead Powerlines
- Underground Powerlines
- Proposed Tracks
- Existing Roads
- Wind Farm Site Boundary



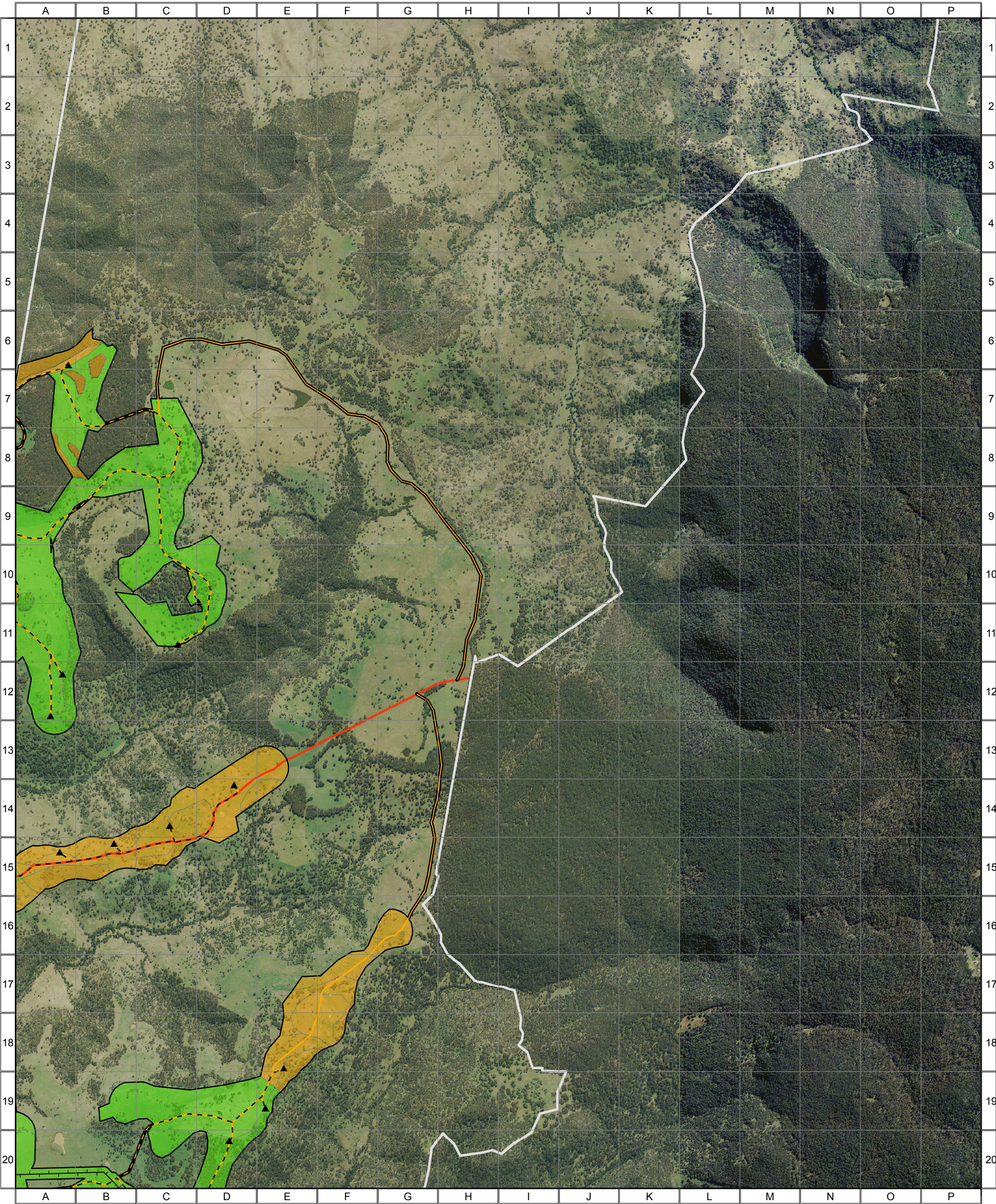
0 0.25 0.5 1 1.5 Kilometres

Approx. Scale @ A3 1:32500
Ref: 4777 - Liverpool Range Wind Farm
Produced by: Tom Hamilton
Date: 15 November 2013
Projection: GDA94 MGA Zone 55

Based on Infrastructure datasets provided by Epuron (2011-2013)
Aerial Photography provided by Epuron (Aug. 2011)
(C) Copyright Commonwealth of Australia (Geoscience Australia) 2008



4777 - Liverpool Range (WF Study Area, Map 3) - Combined Flora and Fauna Constraints



Combined Constraints

- High
- Moderate
- Low

Combined Survey Area (Preferred Infrastructure Layout)

- Indicative Turbine Locations
- Substations
- Overhead Powerlines
- Underground Powerlines
- Proposed Tracks
- Existing Roads
- Wind Farm Site Boundary



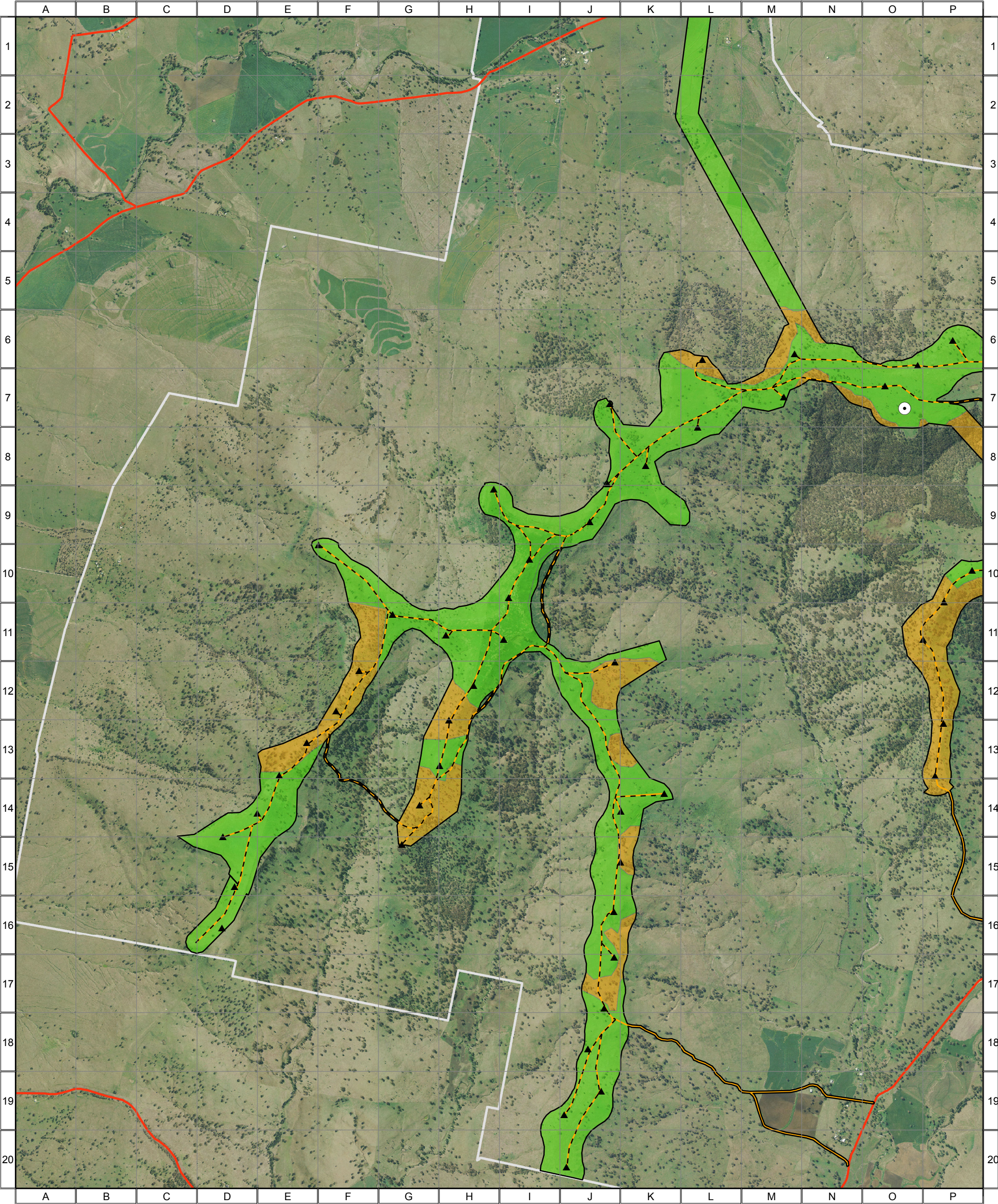
0 0.25 0.5 1 1.5 Kilometres

Approx. Scale @ A3 1:32500
Ref: 4777 - Liverpool Range Wind Farm
Produced by: Tom Hamilton
Date: 15 November 2013
Projection: GDA94 MGA Zone 55

Based on Infrastructure datasets provided by Epuron (2011-2013)
Aerial Photography provided by Epuron (Aug. 2011)
(C) Copyright Commonwealth of Australia (Geoscience Australia) 2008



4777 - Liverpool Range (WF Study Area, Map 4) - Combined Flora and Fauna Constraints



Combined Constraints

- High
- Moderate
- Low

Combined Survey Area (Preferred Infrastructure Layout)

- Indicative Turbine Locations
- Substations
- Overhead Powerlines
- Underground Powerlines
- Proposed Tracks
- Existing Roads
- Wind Farm Site Boundary



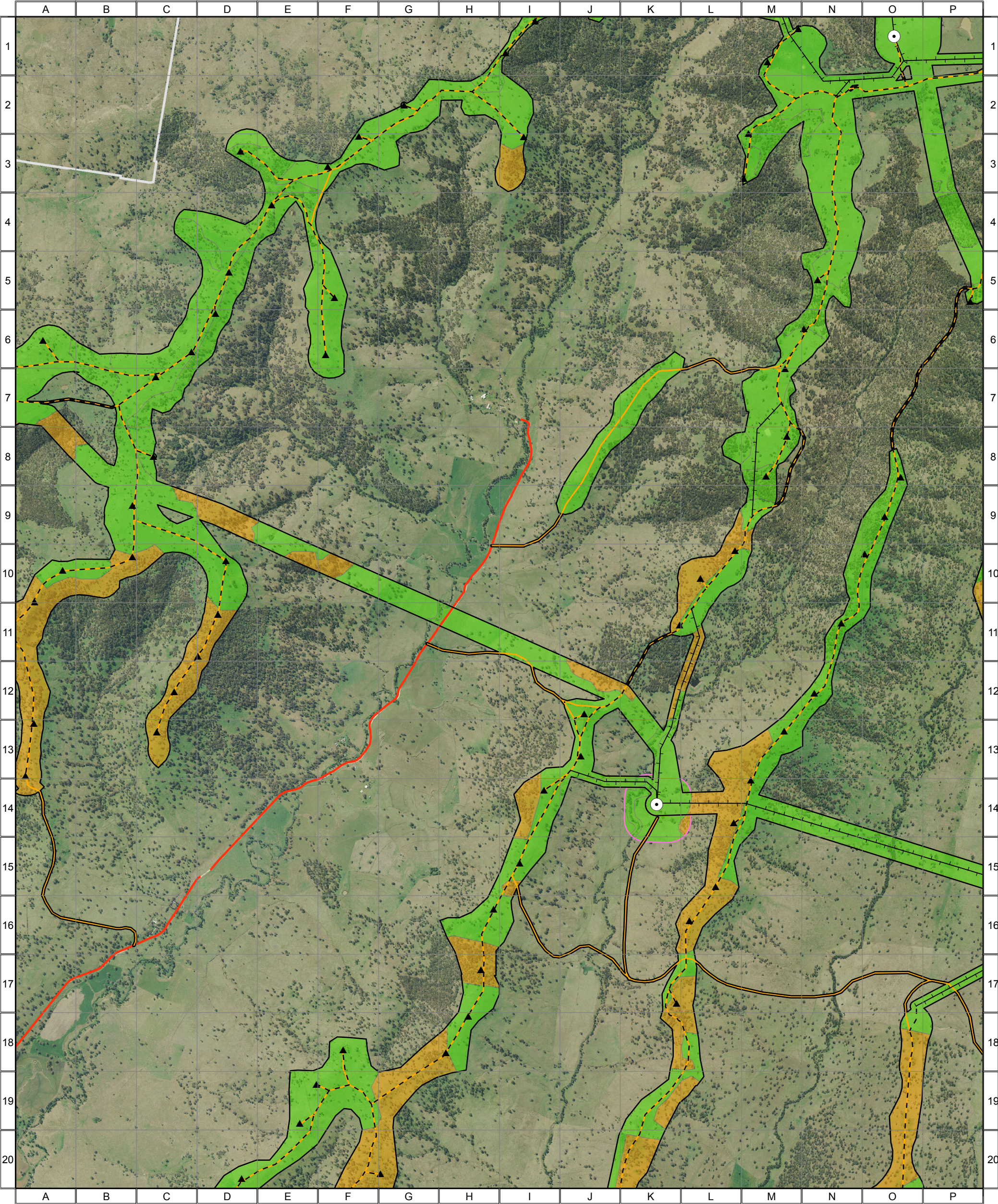
0 0.25 0.5 1 1.5 Kilometres

Approx. Scale @ A3 1:32500
Ref: 4777 - Liverpool Range Wind Farm
Produced by: Tom Hamilton
Date: 15 November 2013
Projection: GDA94 MGA Zone 55

Based on Infrastructure datasets provided by Epuron (2011-2013)
Aerial Photography provided by Epuron (Aug. 2011)
(C) Copyright Commonwealth of Australia (Geoscience Australia) 2008



4777 - Liverpool Range (WF Study Area, Map 5) - Combined Flora and Fauna Constraints



Combined Constraints

- High
- Moderate
- Low

- Combined Survey Area (Preferred Infrastructure Layout)
- Combined Survey Area (Alternative Infrastructure Layout)

- Indicative Turbine Locations
- Substations
- Overhead Powerlines
- Underground Powerlines
- Proposed Tracks
- Existing Roads
- Wind Farm Site Boundary



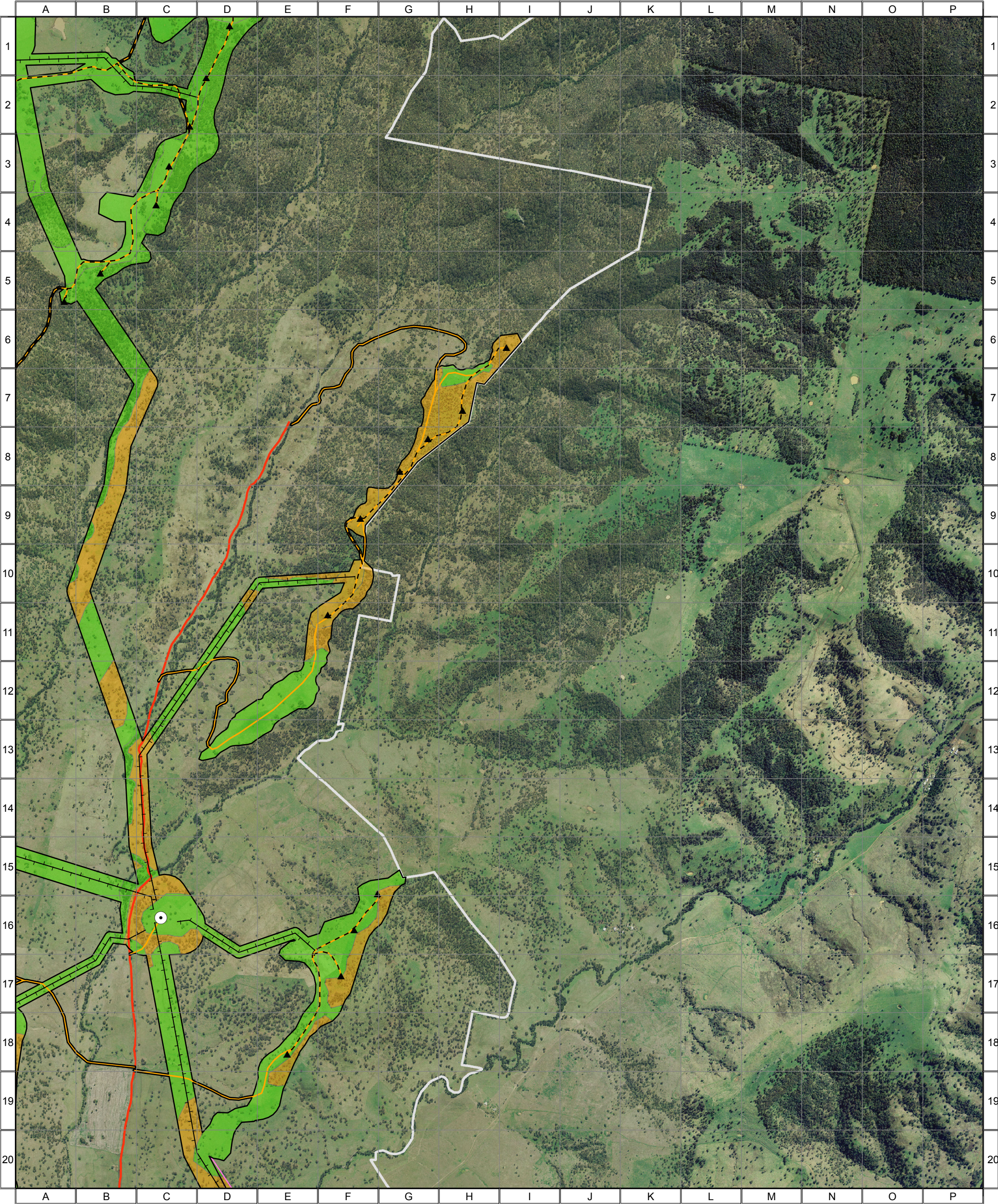
0 0.25 0.5 1 1.5 Kilometres

Approx. Scale @ A3 1:32500
Ref: 4777 - Liverpool Range Wind Farm
Produced by: Tom Hamilton
Date: 15 November 2013
Projection: GDA94 MGA Zone 55

Based on Infrastructure datasets provided by Epuron (2011-2013)
Aerial Photography provided by Epuron (Aug. 2011)
(C) Copyright Commonwealth of Australia (Geoscience Australia) 2008



4777 - Liverpool Range (WF Study Area, Map 6) - Combined Flora and Fauna Constraints



Combined Constraints

- High
- Moderate
- Low

- Combined Survey Area (Preferred Infrastructure Layout)
- Combined Survey Area (Alternative Infrastructure Layout)

- Indicative Turbine Locations
- Substations
- Overhead Powerlines
- Underground Powerlines
- Proposed Tracks
- Existing Roads
- Wind Farm Site Boundary



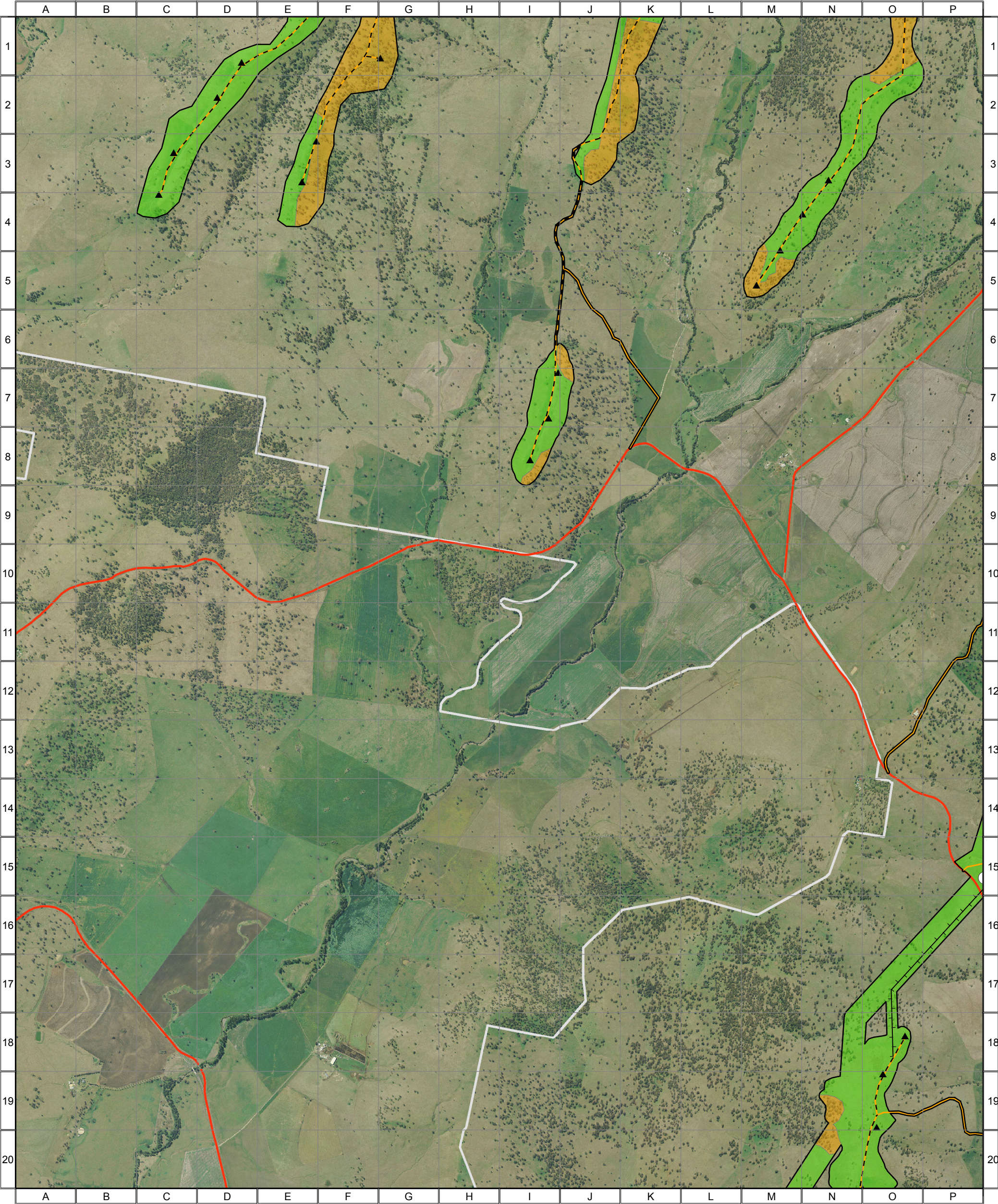
0 0.25 0.5 1 1.5 Kilometres

Approx. Scale @ A3 1:32500
Ref: 4777 - Liverpool Range Wind Farm
Produced by: Tom Hamilton
Date: 15 November 2013
Projection: GDA94 MGA Zone 55

Based on Infrastructure datasets provided by Epuron (2011-2013)
Aerial Photography provided by Epuron (Aug. 2011)
(C) Copyright Commonwealth of Australia (Geoscience Australia) 2008



4777 - Liverpool Range (WF Study Area, Map 7) - Combined Flora and Fauna Constraints



Combined Constraints

- High
- Moderate
- Low

Combined Survey Area (Preferred Infrastructure Layout)

- Indicative Turbine Locations
- Substations
- Overhead Powerlines
- Underground Powerlines
- Proposed Tracks
- Existing Roads
- Wind Farm Site Boundary



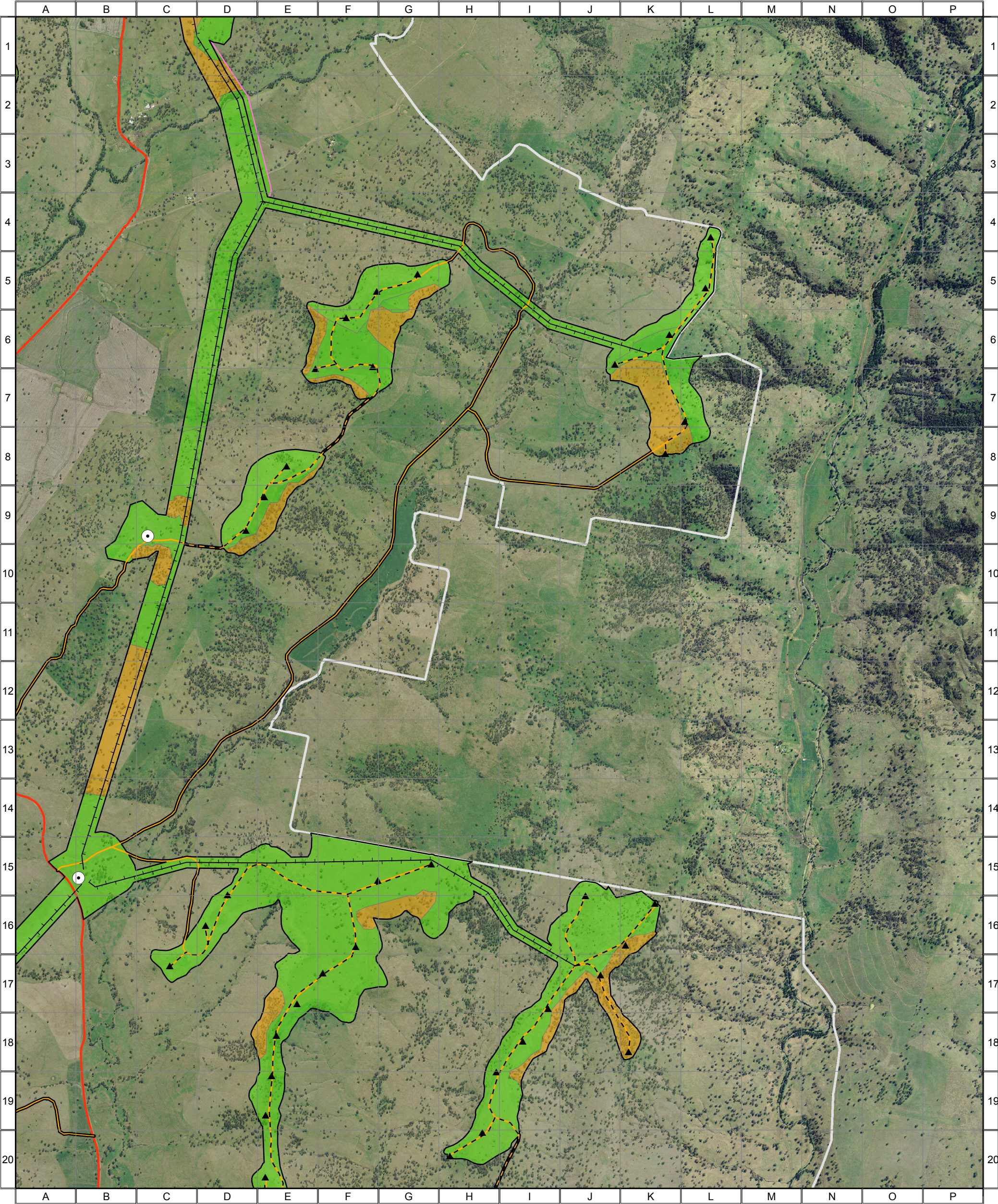
0 0.25 0.5 1 1.5 Kilometres

Approx. Scale @ A3 1:32500
Ref: 4777 - Liverpool Range Wind Farm
Produced by: Tom Hamilton
Date: 15 November 2013
Projection: GDA94 MGA Zone 55

Based on Infrastructure datasets provided by Epuron (2011-2013)
Aerial Photography provided by Epuron (Aug. 2011)
(C) Copyright Commonwealth of Australia (Geoscience Australia) 2008



4777 - Liverpool Range (WF Study Area, Map 8) - Combined Flora and Fauna Constraints



Combined Constraints

- High
- Moderate
- Low

- Combined Survey Area (Preferred Infrastructure Layout)
- Combined Survey Area (Alternative Infrastructure Layout)

- Indicative Turbine Locations
- Substations
- Overhead Powerlines
- Underground Powerlines
- Proposed Tracks
- Existing Roads
- Wind Farm Site Boundary



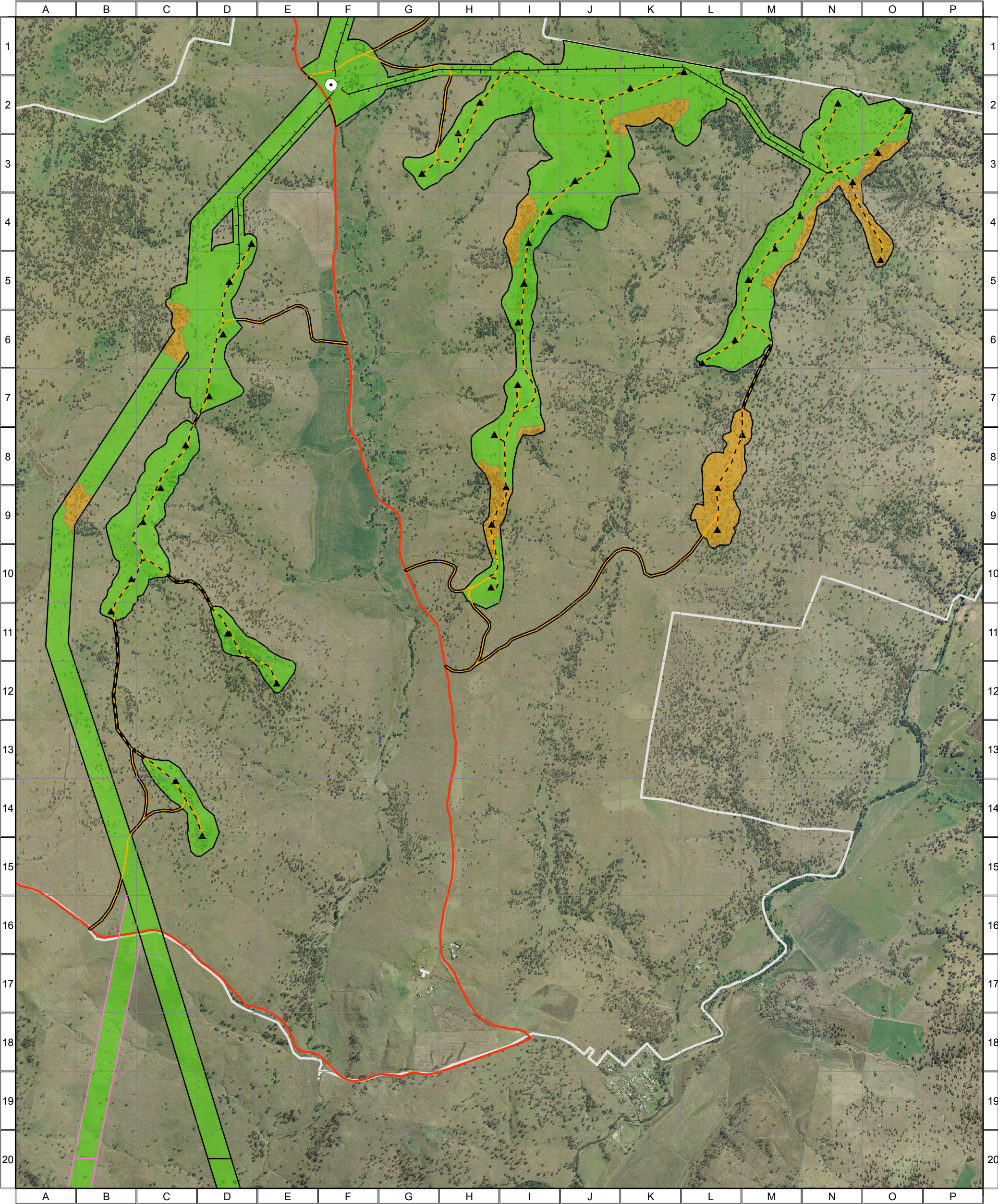
0 0.25 0.5 1 1.5 Kilometres

Approx. Scale @ A3 1:32500
Ref: 4777 - Liverpool Range Wind Farm
Produced by: Tom Hamilton
Date: 15 November 2013
Projection: GDA94 MGA Zone 55

Based on Infrastructure datasets provided by Epuron (2011-2013)
Aerial Photography provided by Epuron (Aug. 2011)
(C) Copyright Commonwealth of Australia (Geoscience Australia) 2008



4777 - Liverpool Range (WF Study Area, Map 9) - Combined Flora and Fauna Constraints



Combined Constraints

- High
- Moderate
- Low

- Combined Survey Area (Preferred Infrastructure Layout)
- Combined Survey Area (Alternative Infrastructure Layout)

- Indicative Turbine Locations
- Substations
- Overhead Powerlines
- Underground Powerlines
- Proposed Tracks
- Existing Roads
- Wind Farm Site Boundary



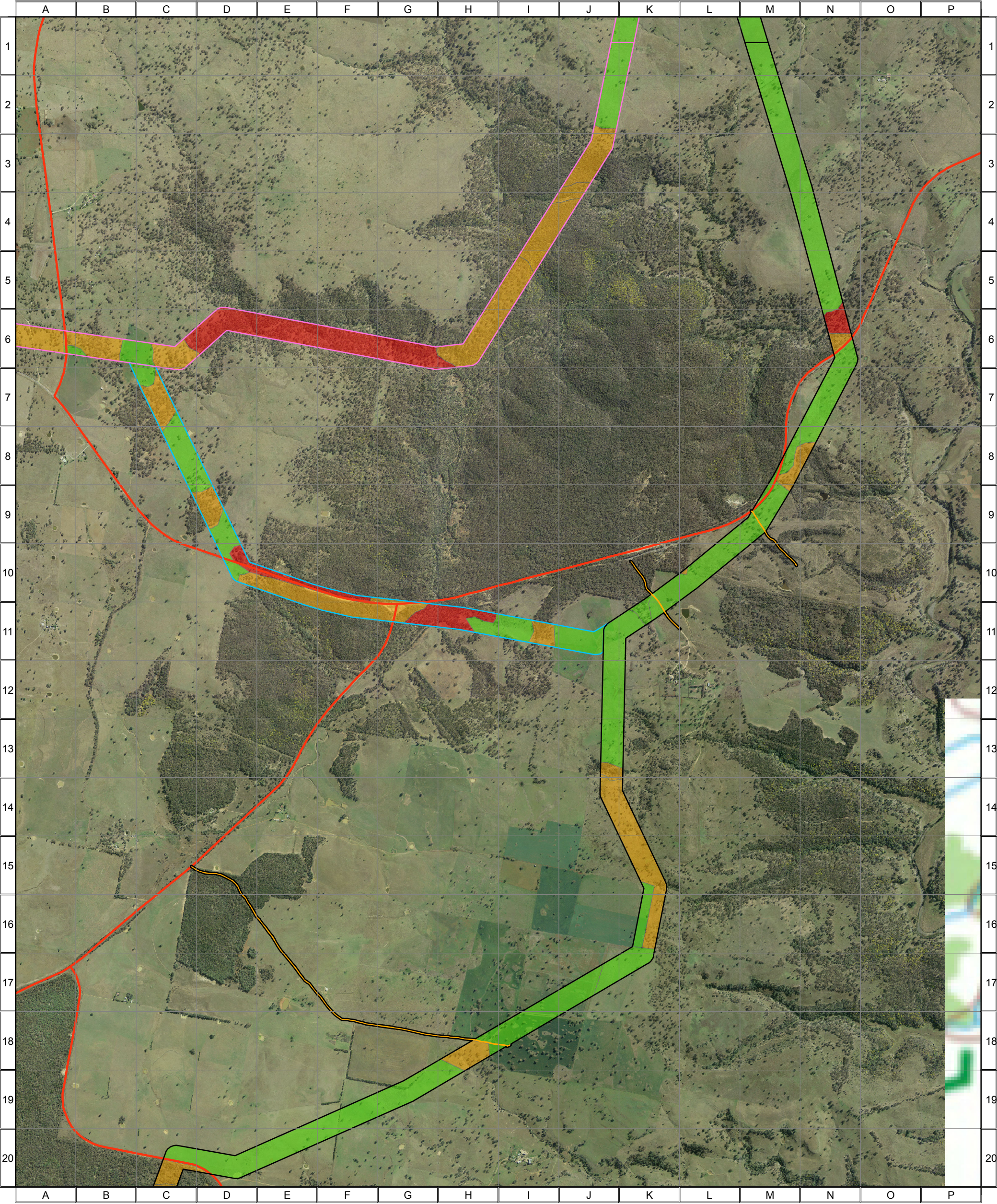
0 0.25 0.5 1 1.5 Kilometres

Approx. Scale @ A3 1:32500
Ref: 4777 - Liverpool Range Wind Farm
Produced by: Tom Hamilton
Date: 15 November 2013
Projection: GDA94 MGA Zone 55

Based on Infrastructure datasets provided by Epuron (2011-2013)
Aerial Photography provided by Epuron (Aug. 2011)
(C) Copyright Commonwealth of Australia (Geoscience Australia) 2008



4777 - Liverpool Range (TL Study Area, Map 1) - Combined Flora and Fauna Constraints



Combined Constraints

- High
- Moderate
- Low

- Combined Survey Area (Preferred Infrastructure Layout)
- Combined Survey Area (Alternative Infrastructure Layout)
- Combined Survey Area (2nd Alternative Infrastructure Layout)

- Indicative Turbine Locations
- Substations
- Overhead Powerlines
- Underground Powerlines
- Proposed Tracks
- Existing Roads
- Wind Farm Site Boundary



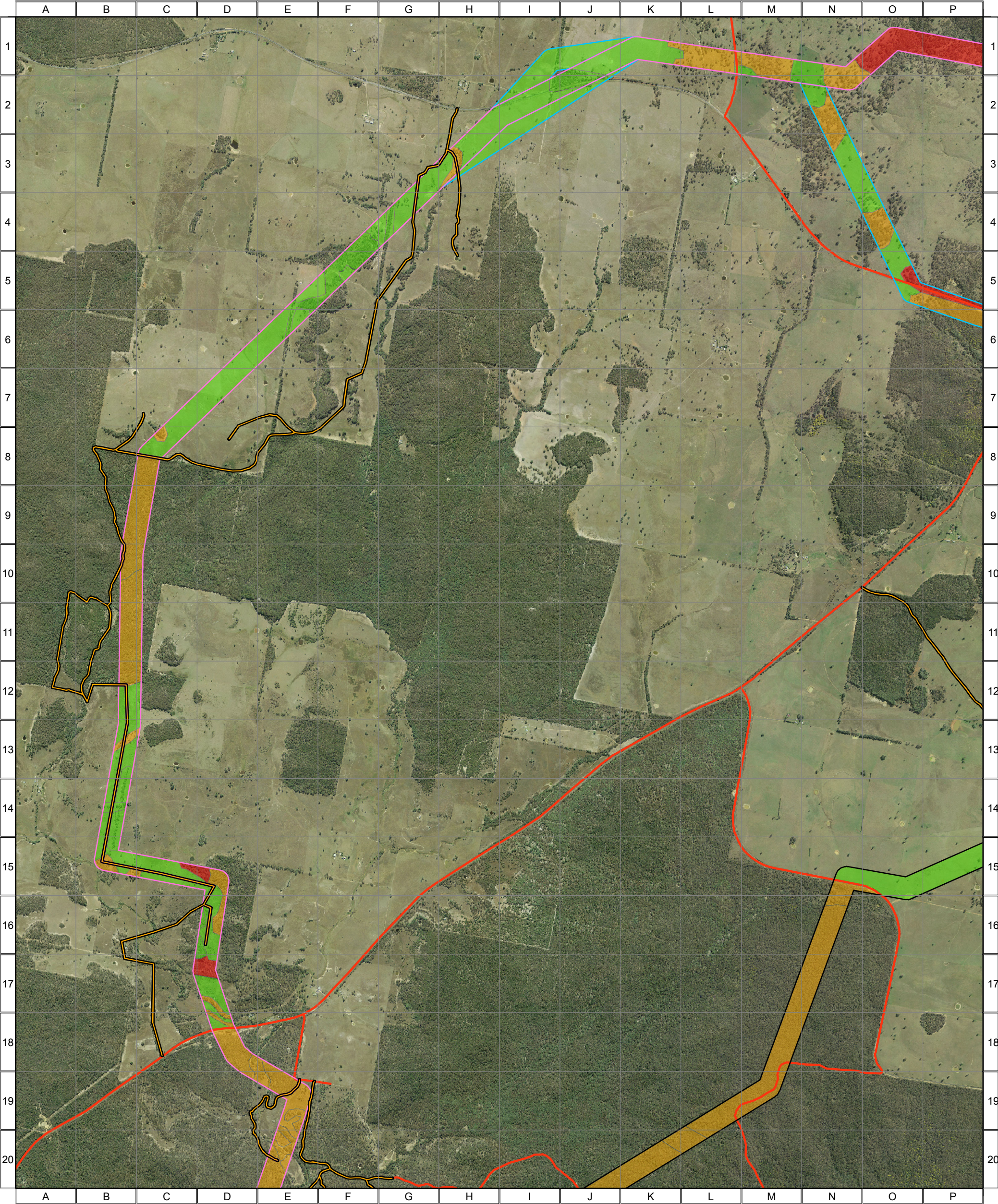
0 0.25 0.5 1 1.5 Kilometres

Approx. Scale @ A3 1:32500
Ref: 4777 - Liverpool Range Wind Farm
Produced by: Tom Hamilton
Date: 15 November 2013
Projection: GDA94 MGA Zone 55

Based on Infrastructure datasets provided by Epuron (2011-2013)
Aerial Photography provided by Epuron (Aug. 2011)
(C) Copyright Commonwealth of Australia (Geoscience Australia) 2008



4777 - Liverpool Range (TL Study Area, Map 2) - Combined Flora and Fauna Constraints



Combined Constraints

- High
- Moderate
- Low

- Combined Survey Area (Preferred Infrastructure Layout)
- Combined Survey Area (Alternative Infrastructure Layout)
- Combined Survey Area (2nd Alternative Infrastructure Layout)

- Indicative Turbine Locations
- Substations
- Overhead Powerlines
- Underground Powerlines
- Proposed Tracks
- Existing Roads
- Wind Farm Site Boundary



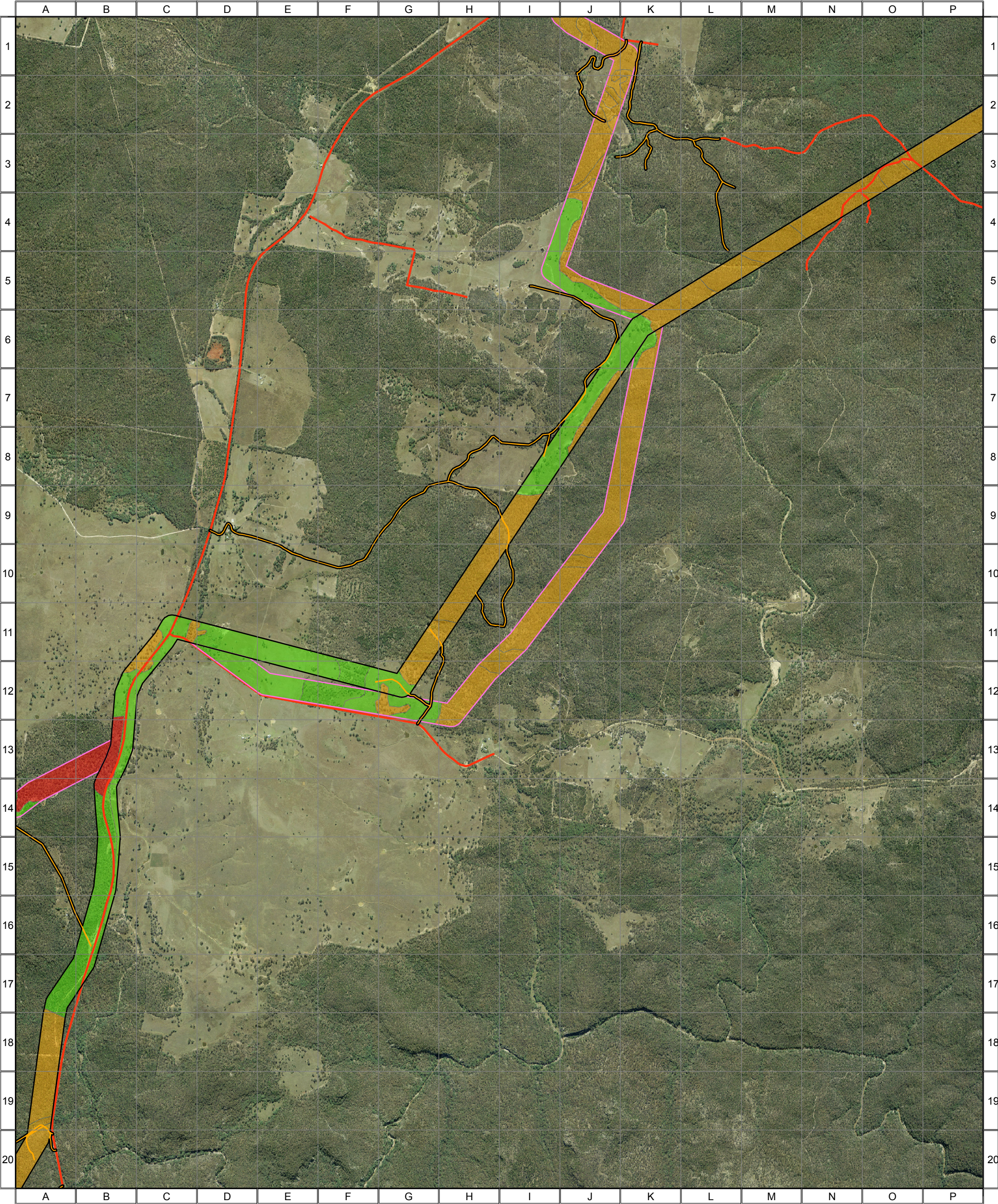
0 0.25 0.5 1 1.5 Kilometres

Approx. Scale @ A3 1:32500
Ref: 4777 - Liverpool Range Wind Farm
Produced by: Tom Hamilton
Date: 15 November 2013
Projection: GDA94 MGA Zone 55

Based on Infrastructure datasets provided by Epuron (2011-2013)
Aerial Photography provided by Epuron (Aug. 2011)
(C) Copyright Commonwealth of Australia (Geoscience Australia) 2008



4777 - Liverpool Range (TL Study Area, Map 3) - Combined Flora and Fauna Constraints



Combined Constraints

- High
- Moderate
- Low

- Combined Survey Area (Preferred Infrastructure Layout)
- Combined Survey Area (Alternative Infrastructure Layout)

- ▲ Indicative Turbine Locations
- Substations
- Overhead Powerlines
- Underground Powerlines
- Proposed Tracks
- Existing Roads
- Wind Farm Site Boundary



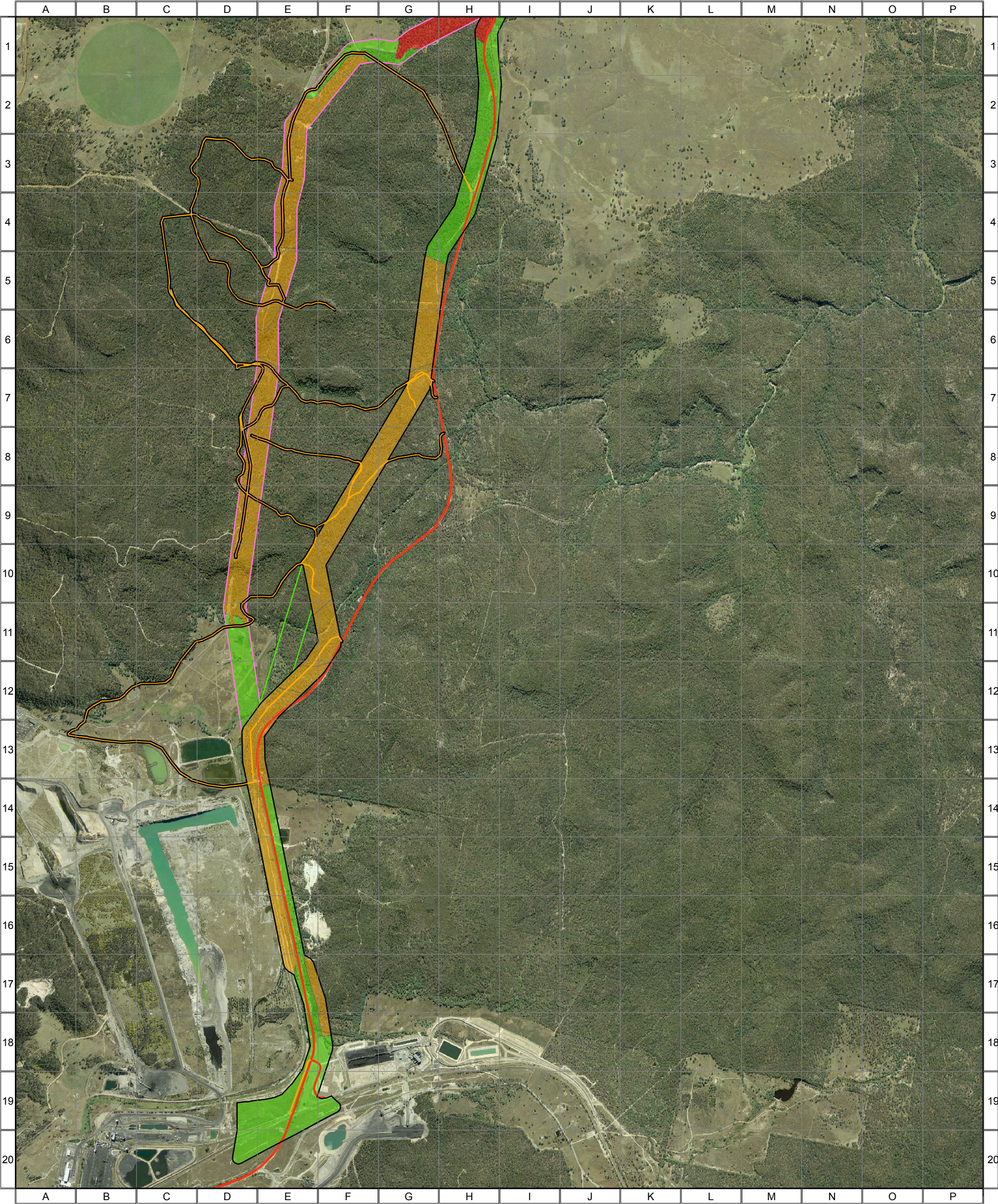
0 0.25 0.5 1 1.5 Kilometres

Approx. Scale @ A3 1:32500
Ref: 4777 - Liverpool Range Wind Farm
Produced by: Tom Hamilton
Date: 15 November 2013
Projection: GDA94 MGA Zone 55

Based on Infrastructure datasets provided by Epuron (2011-2013)
Aerial Photography provided by Epuron (Aug. 2011)
(C) Copyright Commonwealth of Australia (Geoscience Australia) 2008



4777 - Liverpool Range (TL Study Area, Map 4) - Combined Flora and Fauna Constraints



Combined Constraints

- High
- Moderate
- Low

- Combined Survey Area (Preferred Infrastructure Layout)
- Proposed deviation for Square-tailed Kite nest buffer
- Combined Survey Area (Alternative Infrastructure Layout)

- ▲ Indicative Turbine Locations
- Substations
- Overhead Powerlines
- Underground Powerlines
- Proposed Tracks
- Existing Roads
- Wind Farm Site Boundary



0 0.25 0.5 1 1.5 Kilometres

Approx. Scale @ A3 1:32500
Ref: 4777 - Liverpool Range Wind Farm
Produced by: Tom Hamilton
Date: 15 November 2013
Projection: GDA94 MGA Zone 55

Based on Infrastructure datasets provided by Epuron (2011-2013)
Aerial Photography provided by Epuron (Aug. 2011)
(C) Copyright Commonwealth of Australia (Geoscience Australia) 2008

