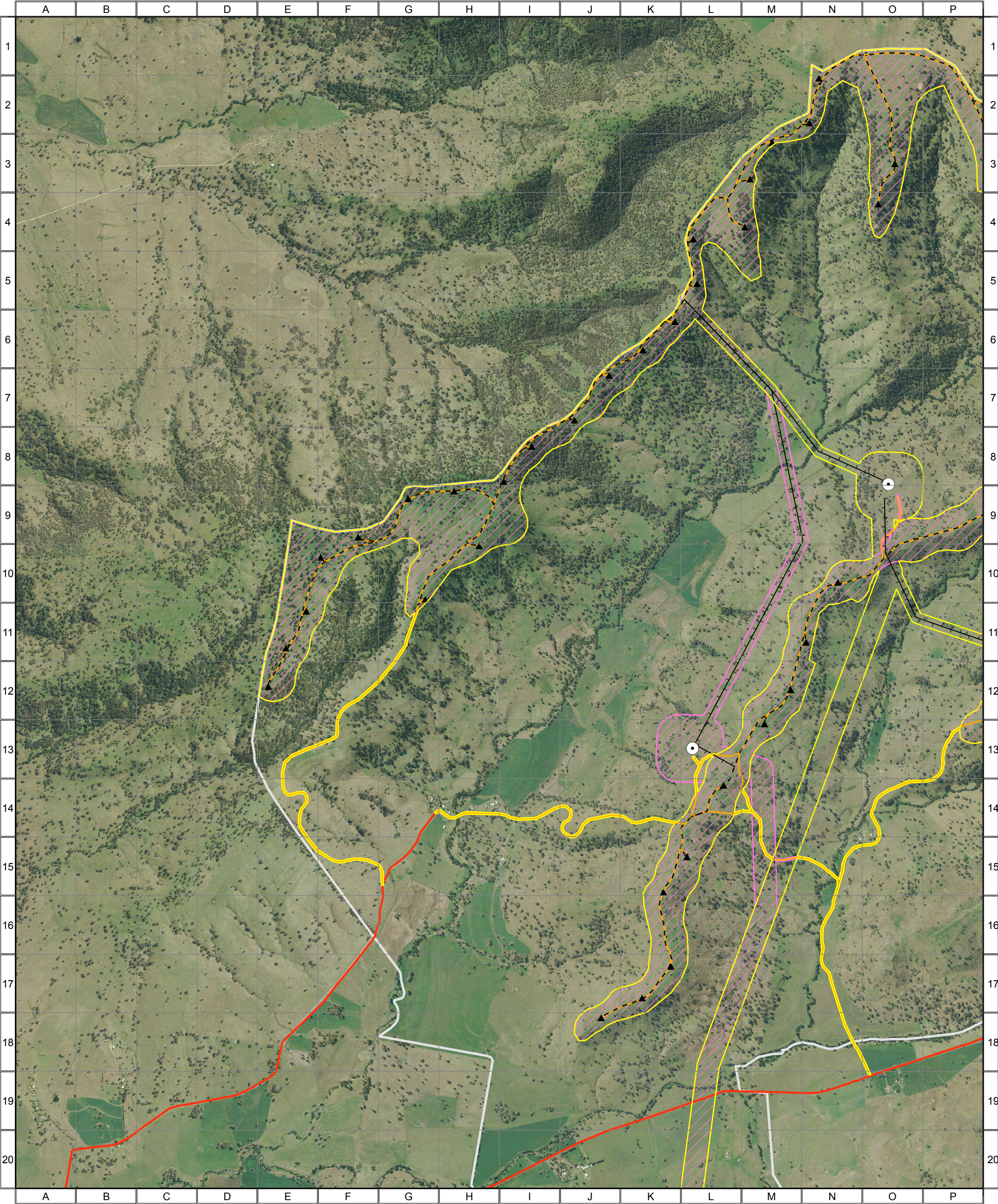




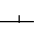
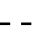







4777 - Liverpool Range (WF Study Area, Map 1) - Proposed Development Layout

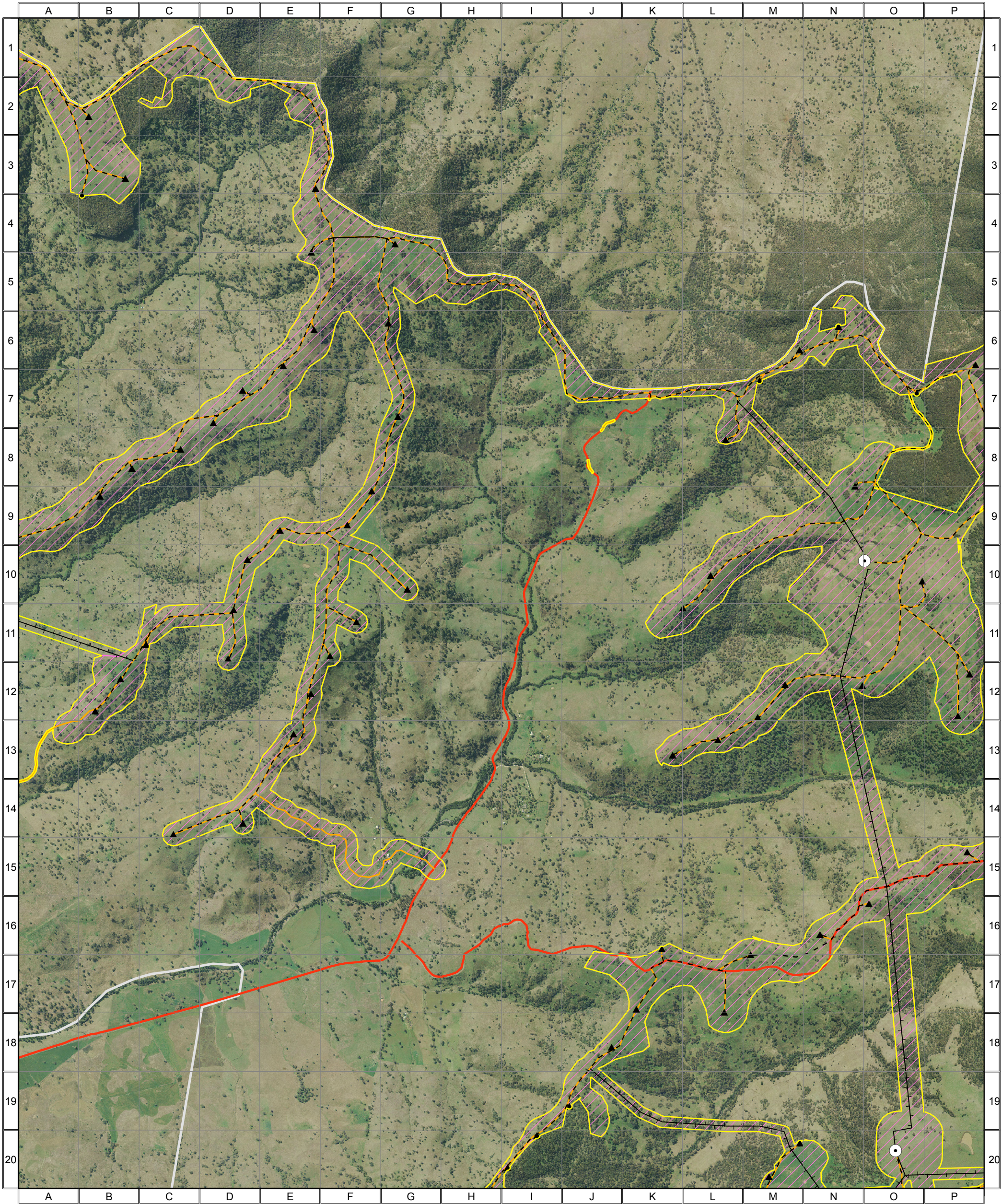




 Combined Survey Area (Preferred Infrastructure Layout)
 Combined Survey Area (Alternative Infrastructure Layout)



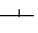
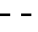



 Indicative Turbine Locations
 Substations
 Overhead Powerlines
 Underground Powerlines
 Proposed Tracks
 Existing Roads
 Wind Farm Site Boundary


0 0.25 0.5 1 1.5 Kilometres
Approx. Scale @ A3 1:32500
Ref: 4777 - Liverpool Range Wind Farm
Produced by: Tom Hamilton
Date: 15 November 2013
Projection: GDA94 MGA Zone 55

Based on Infrastructure datasets provided by Epuron (2011-2013)
Aerial Photography provided by Epuron (Aug. 2011)
(C) Copyright Commonwealth of Australia (Geoscience Australia) 2008

4777 - Liverpool Range (WF Study Area, Map 2) - Proposed Development Layout



 Combined Survey Area (Preferred Infrastructure Layout)
 Combined Survey Area (Alternative Infrastructure Layout)

 Indicative Turbine Locations
 Substations
 Overhead Powerlines
 Underground Powerlines
 Proposed Tracks
 Existing Roads
 Wind Farm Site Boundary



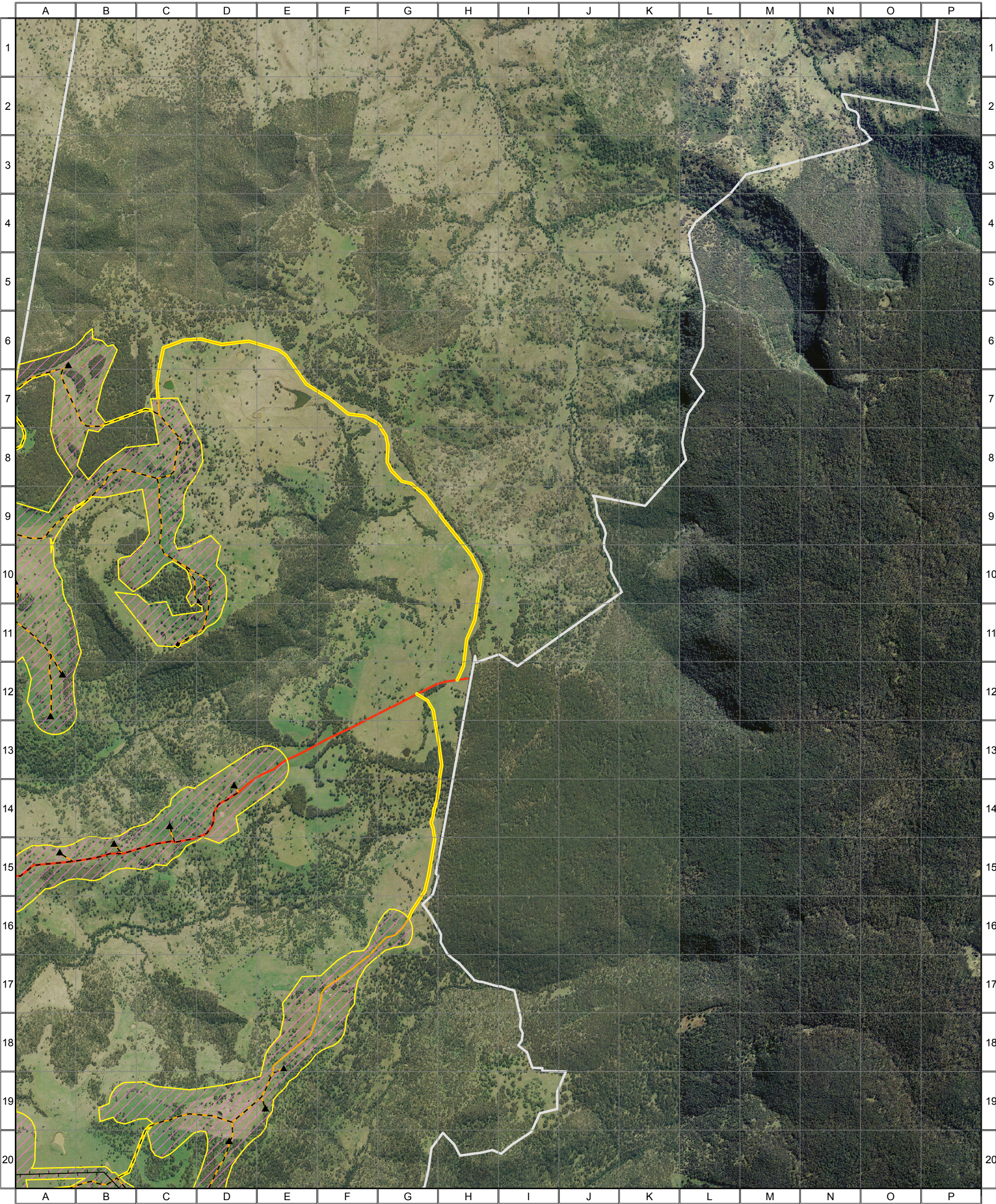
0 0.25 0.5 1 1.5 Kilometres

Approx. Scale @ A3 1:32500
Ref: 4777 - Liverpool Range Wind Farm
Produced by: Tom Hamilton
Date: 15 November 2013
Projection: GDA94 MGA Zone 55

Based on Infrastructure datasets provided by Epuron (2011-2013)
Aerial Photography provided by Epuron (Aug. 2011)
(C) Copyright Commonwealth of Australia (Geoscience Australia) 2008



4777 - Liverpool Range (WF Study Area, Map 3) - Proposed Development Layout



Combined Survey Area (Preferred Infrastructure Layout)

Combined Survey Area (Alternative Infrastructure Layout)

▲ Indicative Turbine Locations

● Substations

— Overhead Powerlines

- - - Underground Powerlines

— Proposed Tracks

— Existing Roads

□ Wind Farm Site Boundary



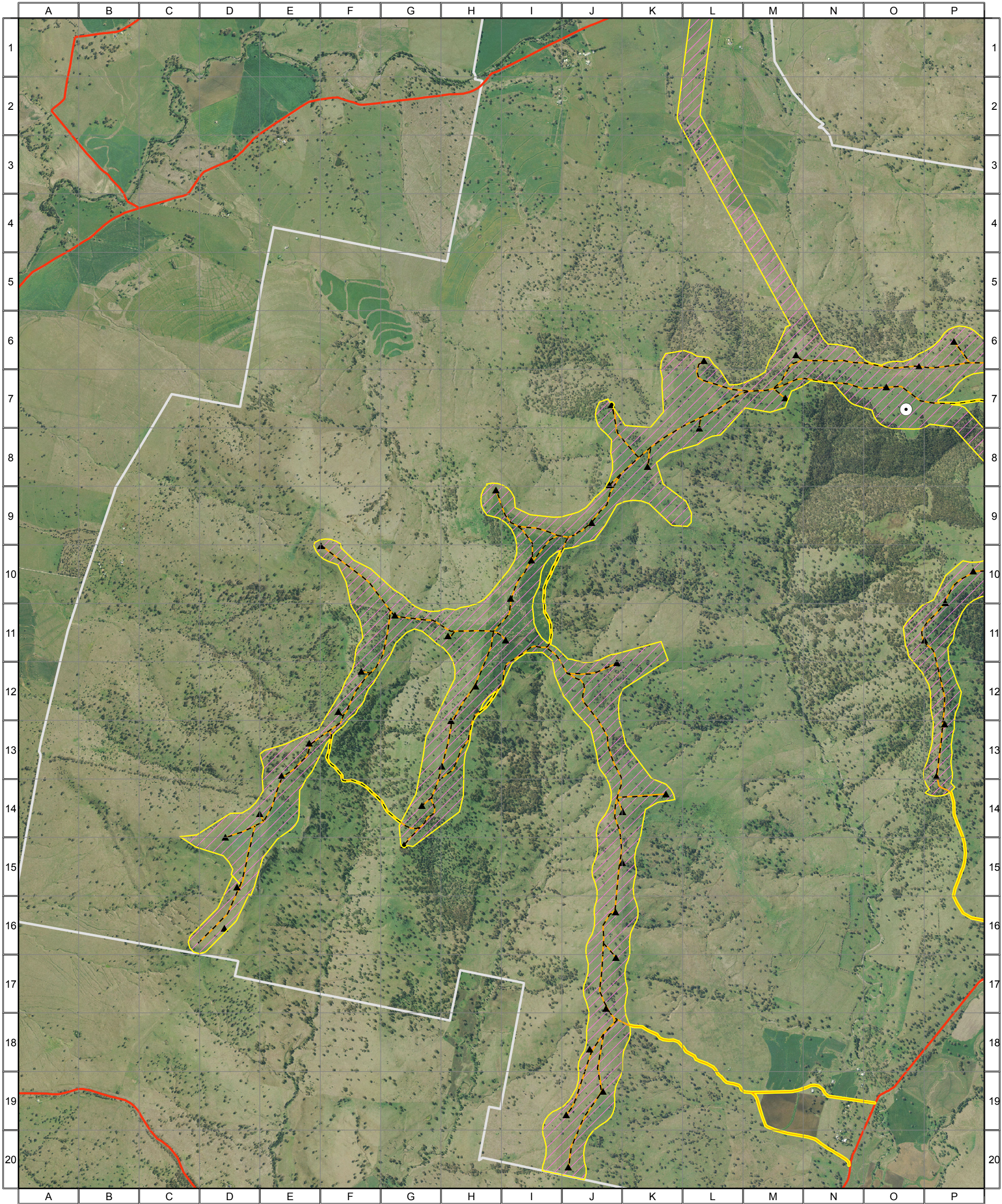
0 0.25 0.5 1 1.5 Kilometres



Approx. Scale @ A3 1:32500
Ref: 4777 - Liverpool Range Wind Farm
Produced by: Tom Hamilton
Date: 15 November 2013
Projection: GDA94 MGA Zone 55








Based on Infrastructure datasets provided by Epuron (2011-2013)
Aerial Photography provided by Epuron (Aug. 2011)
(C) Copyright Commonwealth of Australia (Geoscience Australia) 2008



4777 - Liverpool Range (WF Study Area, Map 4) - Proposed Development Layout



 Combined Survey Area (Preferred Infrastructure Layout)
 Combined Survey Area (Alternative Infrastructure Layout)

 Indicative Turbine Locations
 Substations
 Overhead Powerlines
 Underground Powerlines
 Proposed Tracks
 Existing Roads
 Wind Farm Site Boundary



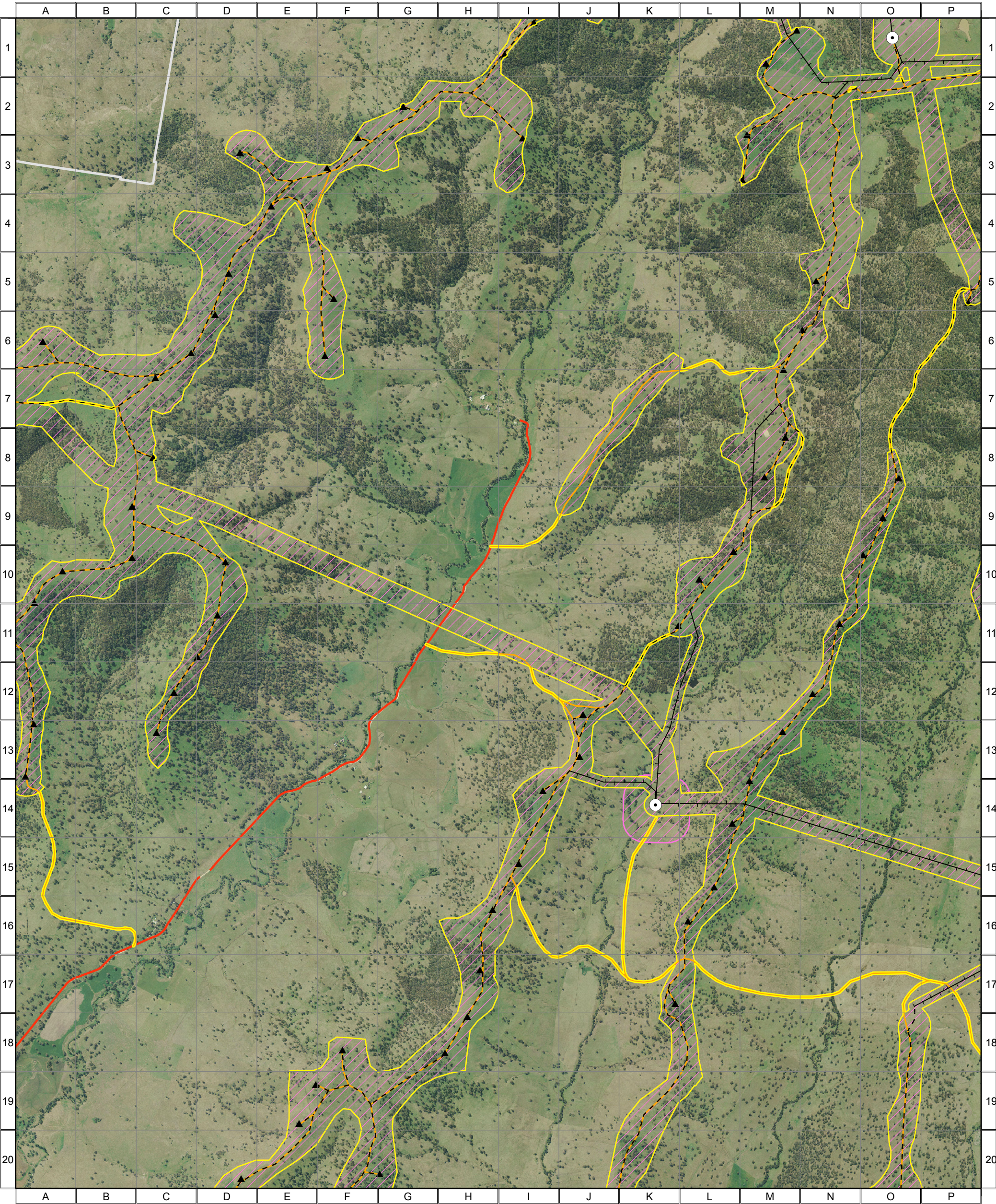
0 0.25 0.5 1 1.5 Kilometres


Approx. Scale @ A3 1:32500
Ref: 4777 - Liverpool Range Wind Farm
Produced by: Tom Hamilton
Date: 15 November 2013
Projection: GDA94 MGA Zone 55


Based on Infrastructure datasets provided by Epuron (2011-2013)
Aerial Photography provided by Epuron (Aug. 2011)
(C) Copyright Commonwealth of Australia (Geoscience Australia) 2008





4777 - Liverpool Range (WF Study Area, Map 5) - Proposed Development Layout

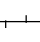


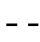
 Combined Survey Area (Preferred Infrastructure Layout)


 Combined Survey Area (Alternative Infrastructure Layout)


 Indicative Turbine Locations


 Substations

 Overhead Powerlines

 Underground Powerlines

 Proposed Tracks

 Existing Roads

 Wind Farm Site Boundary



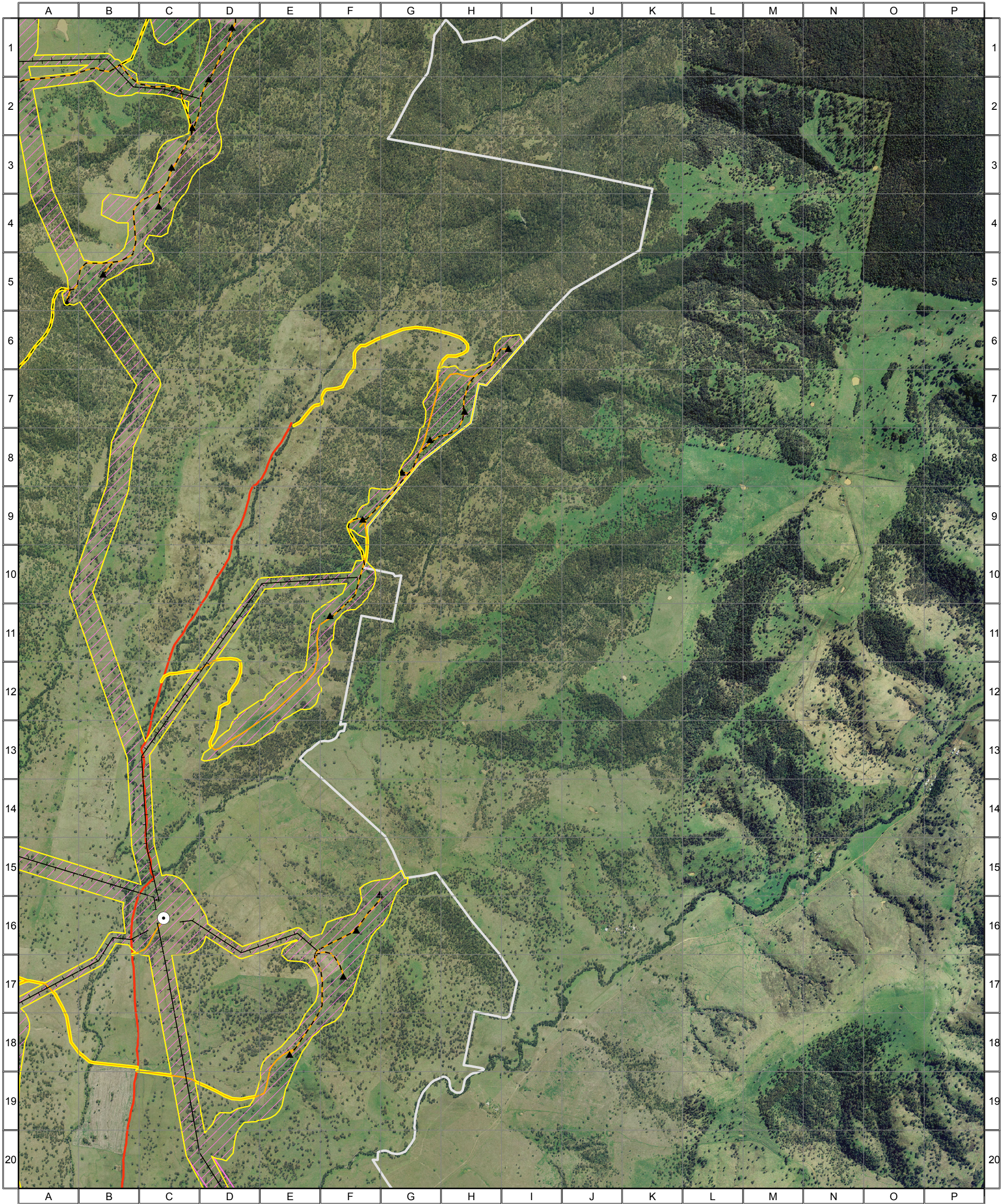
0 0.25 0.5 1 1.5 Kilometres


Approx. Scale @ A3 1:32500
Ref: 4777 - Liverpool Range Wind Farm
Produced by: Tom Hamilton
Date: 15 November 2013
Projection: GDA94 MGA Zone 55


Based on Infrastructure datasets provided by Epuron (2011-2013)
Aerial Photography provided by Epuron (Aug. 2011)
(C) Copyright Commonwealth of Australia (Geoscience Australia) 2008





4777 - Liverpool Range (WF Study Area, Map 6) - Proposed Development Layout

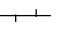


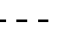
 Combined Survey Area (Preferred Infrastructure Layout)


 Combined Survey Area (Alternative Infrastructure Layout)


 Indicative Turbine Locations


 Substations


 Overhead Powerlines

 Underground Powerlines

 Proposed Tracks


 Existing Roads

 Wind Farm Site Boundary



0 0.25 0.5 1 1.5 Kilometres

Approx. Scale @ A3 1:32500
Ref: 4777 - Liverpool Range Wind Farm
Produced by: Tom Hamilton
Date: 15 November 2013
Projection: GDA94 MGA Zone 55



Based on Infrastructure datasets provided by Epuron (2011-2013)
Aerial Photography provided by Epuron (Aug. 2011)
(C) Copyright Commonwealth of Australia (Geoscience Australia) 2008

4777 - Liverpool Range (WF Study Area, Map 7) - Proposed Development Layout



Combined Survey Area (Preferred Infrastructure Layout)

Combined Survey Area (Alternative Infrastructure Layout)

▲ Indicative Turbine Locations

● Substations

— Overhead Powerlines

- - - Underground Powerlines

— Proposed Tracks

— Existing Roads

□ Wind Farm Site Boundary

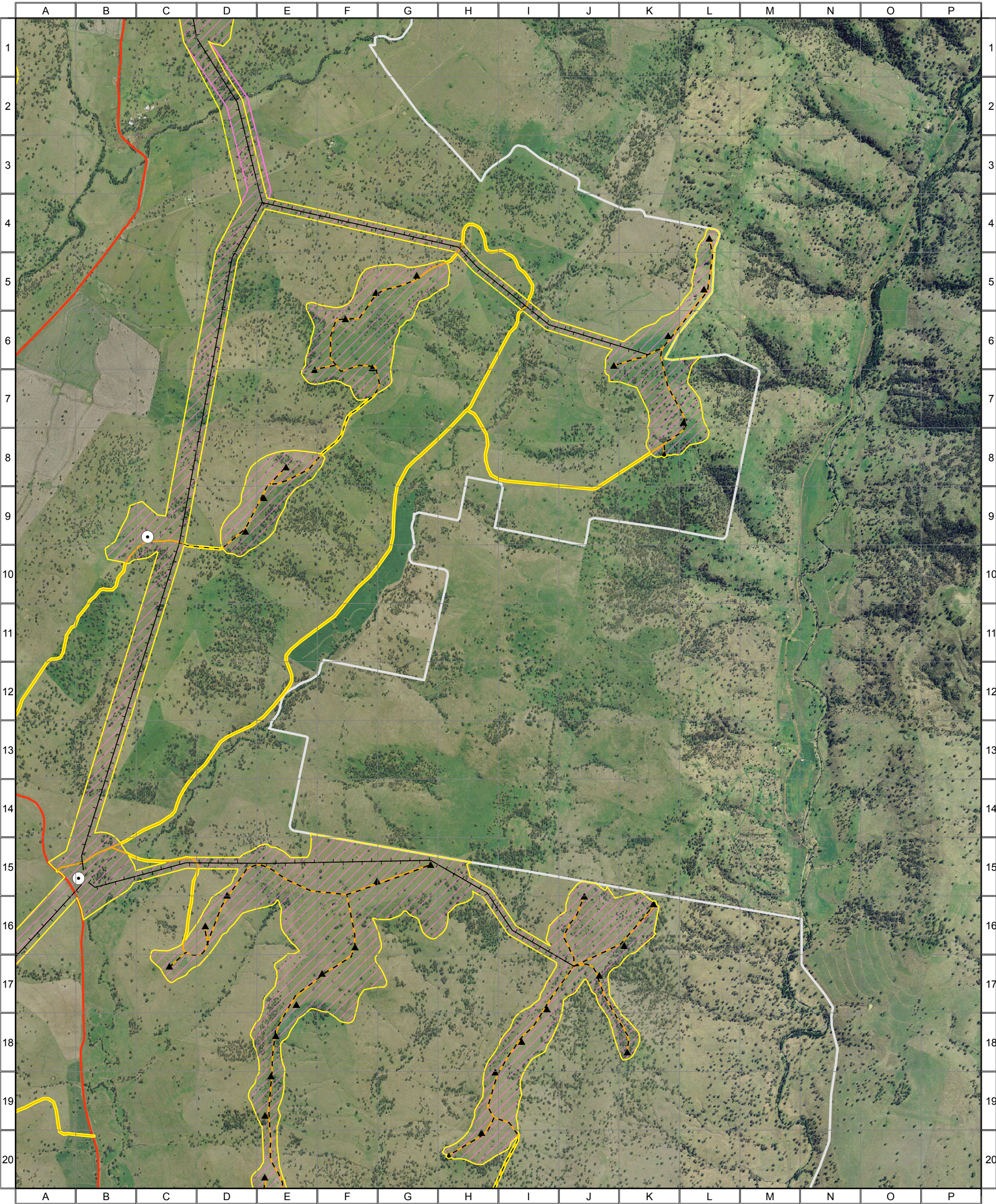
ngh environmental



0 0.25 0.5 1 1.5 Kilometres



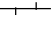
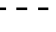



Approx. Scale @ A3 1:32500
Ref: 4777 - Liverpool Range Wind Farm
Produced by: Tom Hamilton
Date: 15 November 2013
Projection: GDA94 MGA Zone 55



Based on Infrastructure datasets provided by Epuron (2011-2013)
Aerial Photography provided by Epuron (Aug. 2011)
(C) Copyright Commonwealth of Australia (Geoscience Australia) 2008

4777 - Liverpool Range (WF Study Area, Map 8) - Proposed Development Layout

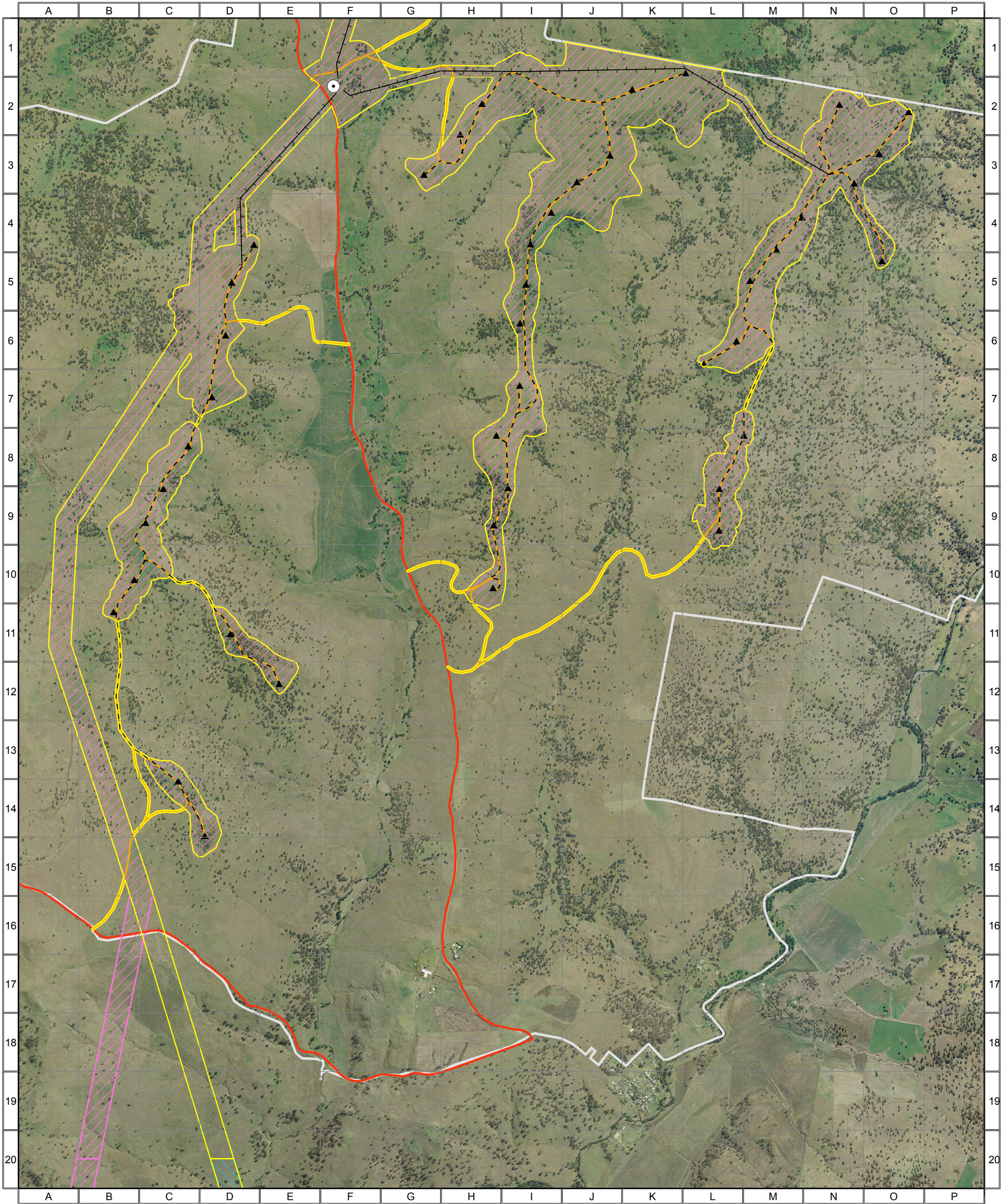


 Combined Survey Area (Preferred Infrastructure Layout)
 Combined Survey Area (Alternative Infrastructure Layout)

 Indicative Turbine Locations
 Substations
 Overhead Powerlines
 Underground Powerlines
 Proposed Tracks
 Existing Roads
 Wind Farm Site Boundary


0 0.25 0.5 1 1.5 Kilometres
Approx. Scale @ A3 1:32500
Ref: 4777 - Liverpool Range Wind Farm
Produced by: Tom Hamilton
Date: 15 November 2013
Projection: GDA94 MGA Zone 55

Based on Infrastructure datasets provided by Epuron (2011-2013)
Aerial Photography provided by Epuron (Aug. 2011)
(C) Copyright Commonwealth of Australia (Geoscience Australia) 2008

4777 - Liverpool Range (WF Study Area, Map 9) - Proposed Development Layout



- Combined Survey Area (Preferred Infrastructure Layout)
- Combined Survey Area (Alternative Infrastructure Layout)
- Combined Survey Area (2nd Alternative Infrastructure Layout)

- ▲ Indicative Turbine Locations
- ⊙ Substations
- Overhead Powerlines
- - - Underground Powerlines
- Proposed Tracks
- Existing Roads
- Wind Farm Site Boundary

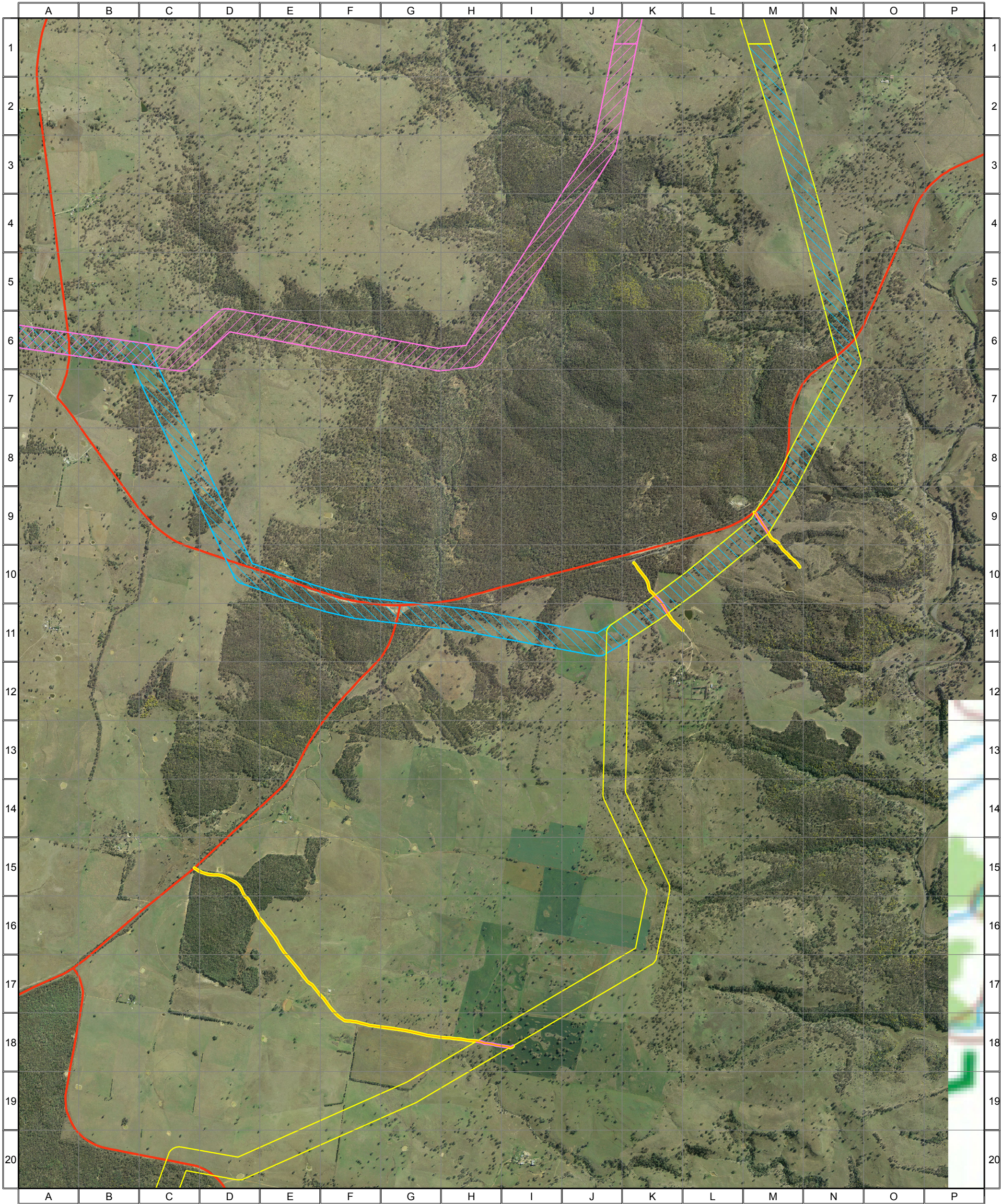
ngh environmental

0 0.25 0.5 1 1.5 Kilometres

Approx. Scale @ A3 1:32500
Ref: 4777 - Liverpool Range Wind Farm
Produced by: Tom Hamilton
Date: 15 November 2013
Projection: GDA94 MGA Zone 55

Based on Infrastructure datasets provided by Epuron (2011-2013)
Aerial Photography provided by Epuron (Aug. 2011)
(C) Copyright Commonwealth of Australia (Geoscience Australia) 2008

4777 - Liverpool Range (TL Study Area, Map 1) - Proposed Development Layout



- Combined Survey Area (Preferred Infrastructure Layout)
- Combined Survey Area (Alternative Infrastructure Layout)
- Combined Survey Area (2nd Alternative Infrastructure Layout)

- ▲ Indicative Turbine Locations
- Substations
- Overhead Powerlines
- - - Underground Powerlines
- Proposed Tracks
- Existing Roads
- Wind Farm Site Boundary



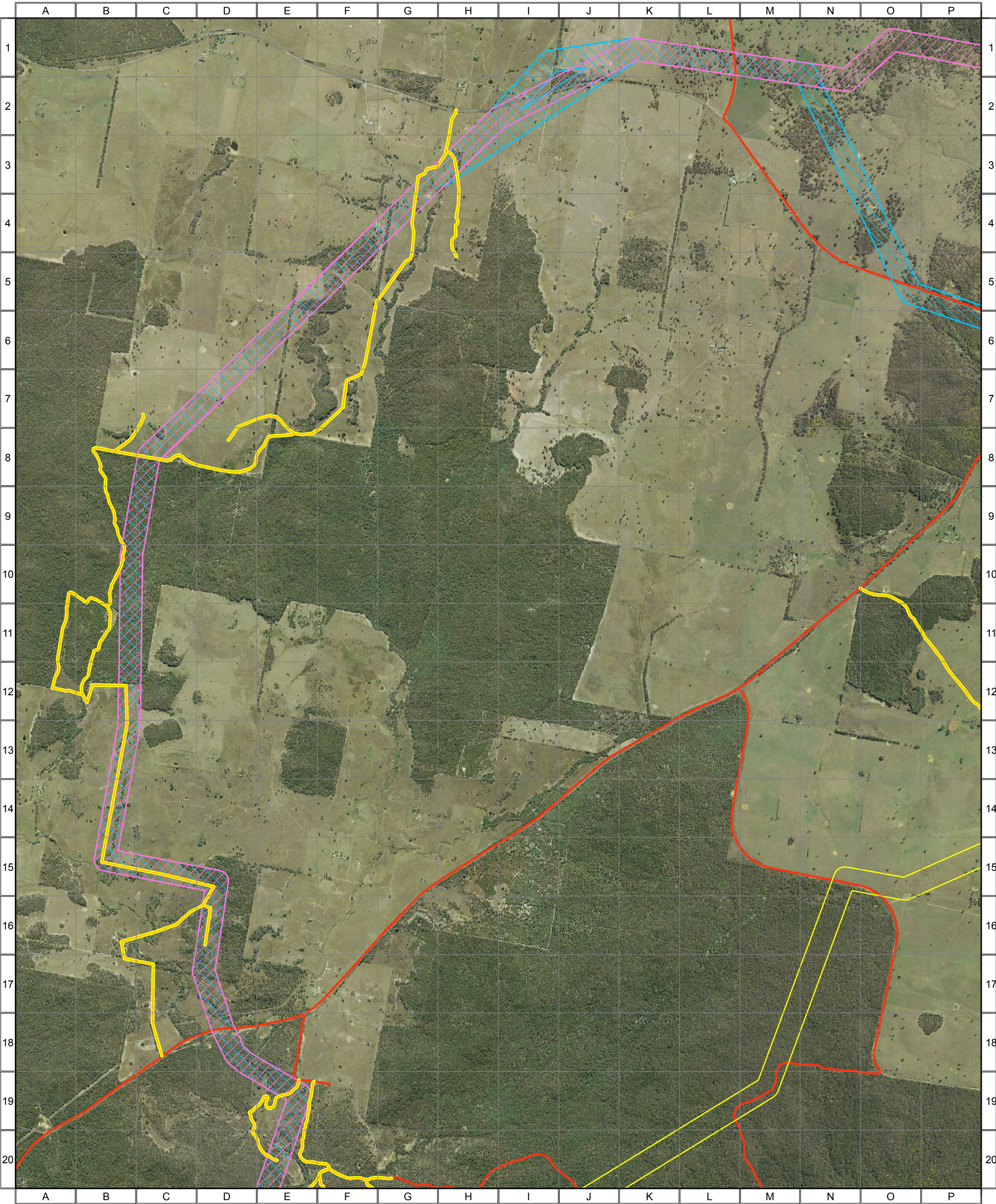
0 0.25 0.5 1 1.5 Kilometres

Approx. Scale @ A3 1:32500
Ref: 4777 - Liverpool Range Wind Farm
Produced by: Tom Hamilton
Date: 15 November 2013
Projection: GDA94 MGA Zone 55

Based on Infrastructure datasets provided by Epuron (2011-2013)
Aerial Photography provided by Epuron (Aug. 2011)
(C) Copyright Commonwealth of Australia (Geoscience Australia) 2008



4777 - Liverpool Range (TL Study Area, Map 2) - Proposed Development Layout



- Combined Survey Area (Preferred Infrastructure Layout)
- Combined Survey Area (Alternative Infrastructure Layout)
- Combined Survey Area (2nd Alternative Infrastructure Layout)

- ▲ Indicative Turbine Locations
- Substations
- Overhead Powerlines
- - - Underground Powerlines
- Proposed Tracks
- Existing Roads
- Wind Farm Site Boundary



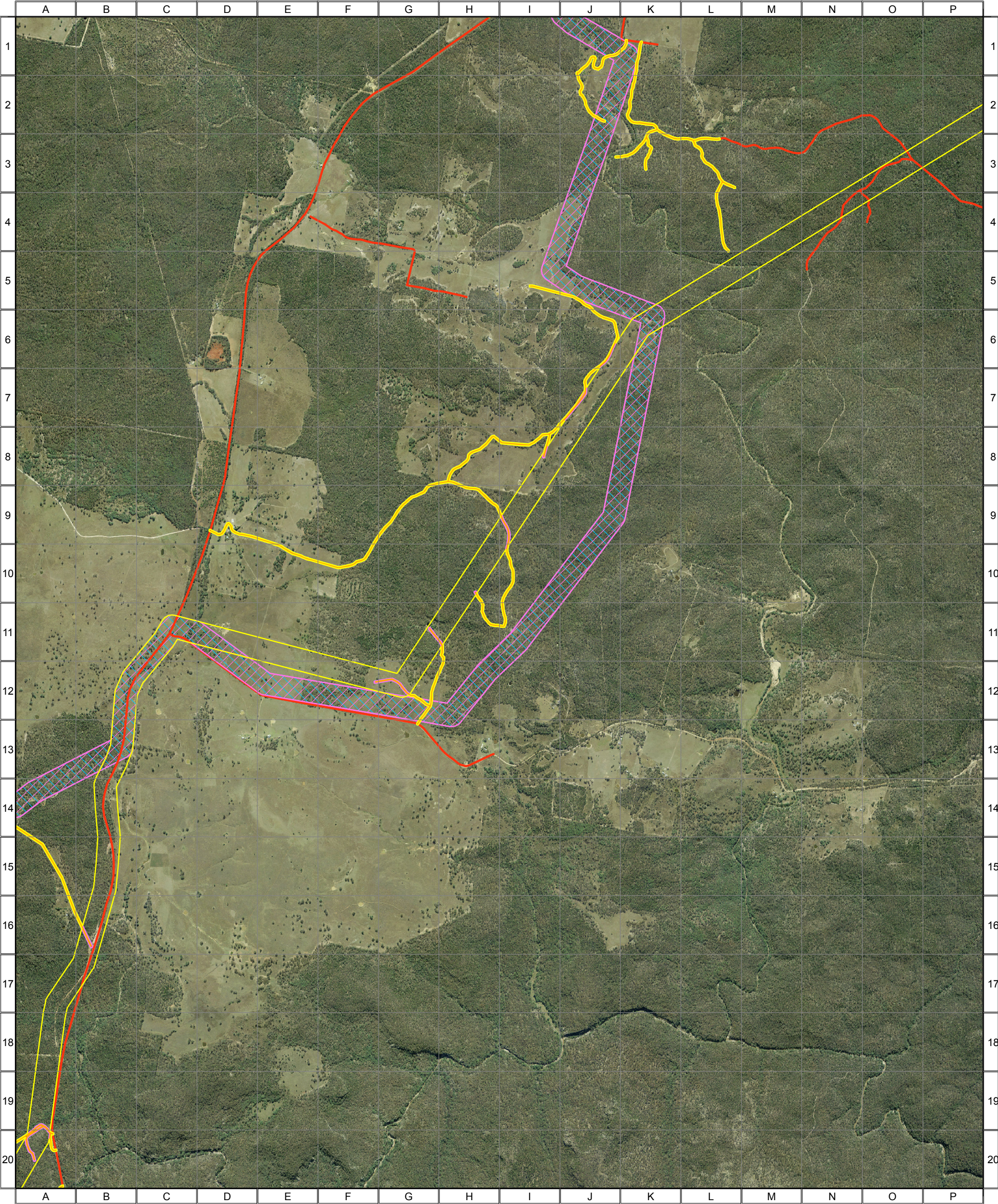
0 0.25 0.5 1 1.5 Kilometres

Approx. Scale @ A3 1:32500
Ref: 4777 - Liverpool Range Wind Farm
Produced by: Tom Hamilton
Date: 15 November 2013
Projection: GDA94 MGA Zone 55

Based on Infrastructure datasets provided by Epuron (2011-2013)
Aerial Photography provided by Epuron (Aug. 2011)
(C) Copyright Commonwealth of Australia (Geoscience Australia) 2008



4777 - Liverpool Range (TL Study Area, Map 3) - Proposed Development Layout



- Combined Survey Area (Preferred Infrastructure Layout)
- Combined Survey Area (Alternative Infrastructure Layout)
- Combined Survey Area (2nd Alternative Infrastructure Layout)

- ▲ Indicative Turbine Locations
- Substations
- +— Overhead Powerlines
- - - Underground Powerlines
- Proposed Tracks
- Existing Roads
- Wind Farm Site Boundary



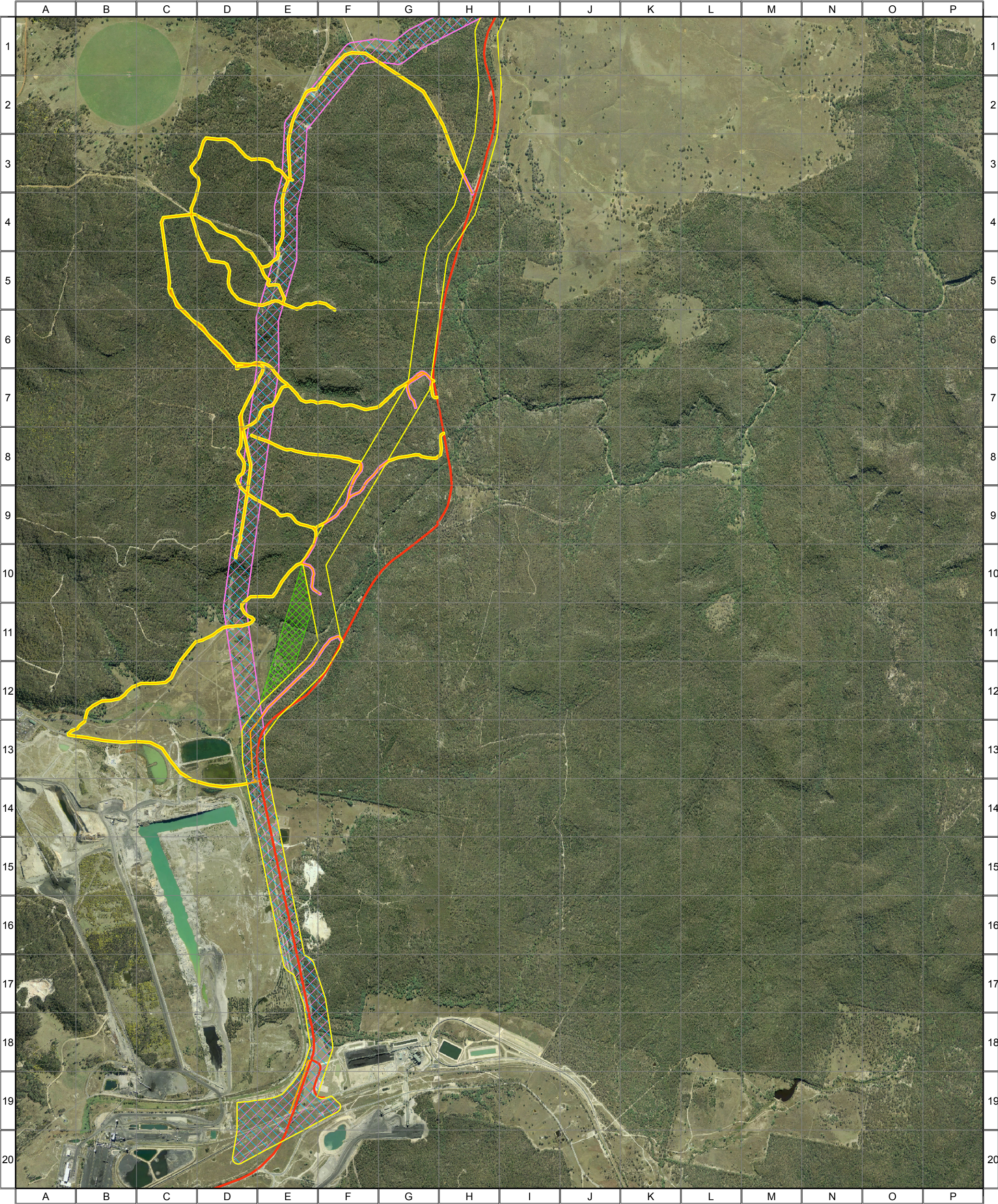
0 0.25 0.5 1 1.5 Kilometres



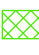


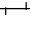

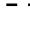



Approx. Scale @ A3 1:32500
Ref: 4777 - Liverpool Range Wind Farm
Produced by: Tom Hamilton
Date: 15 November 2013
Projection: GDA94 MGA Zone 55


Based on Infrastructure datasets provided by Epuron (2011-2013)
Aerial Photography provided by Epuron (Aug. 2011)
(C) Copyright Commonwealth of Australia (Geoscience Australia) 2008



4777 - Liverpool Range (TL Study Area, Map 4) - Proposed Development Layout



- | | |
|--|--|
|  Combined Survey Area (Preferred Infrastructure Layout) |  Indicative Turbine Locations |
|  Proposed deviation for Square-tailed Kite nest buffer |  Substations |
|  Combined Survey Area (Alternative Infrastructure Layout) |  Overhead Powerlines |
|  Combined Survey Area (2nd Alternative Infrastructure Layout) |  Underground Powerlines |
| |  Proposed Tracks |
| |  Existing Roads |
| |  Wind Farm Site Boundary |


0 0.25 0.5 1 1.5 Kilometres
Approx. Scale @ A3 1:32500
Ref: 4777 - Liverpool Range Wind Farm
Produced by: Tom Hamilton
Date: 15 November 2013
Projection: GDA94 MGA Zone 55
Based on Infrastructure datasets provided by Epuron (2011-2013)
Aerial Photography provided by Epuron (Aug. 2011)
(C) Copyright Commonwealth of Australia (Geoscience Australia) 2008