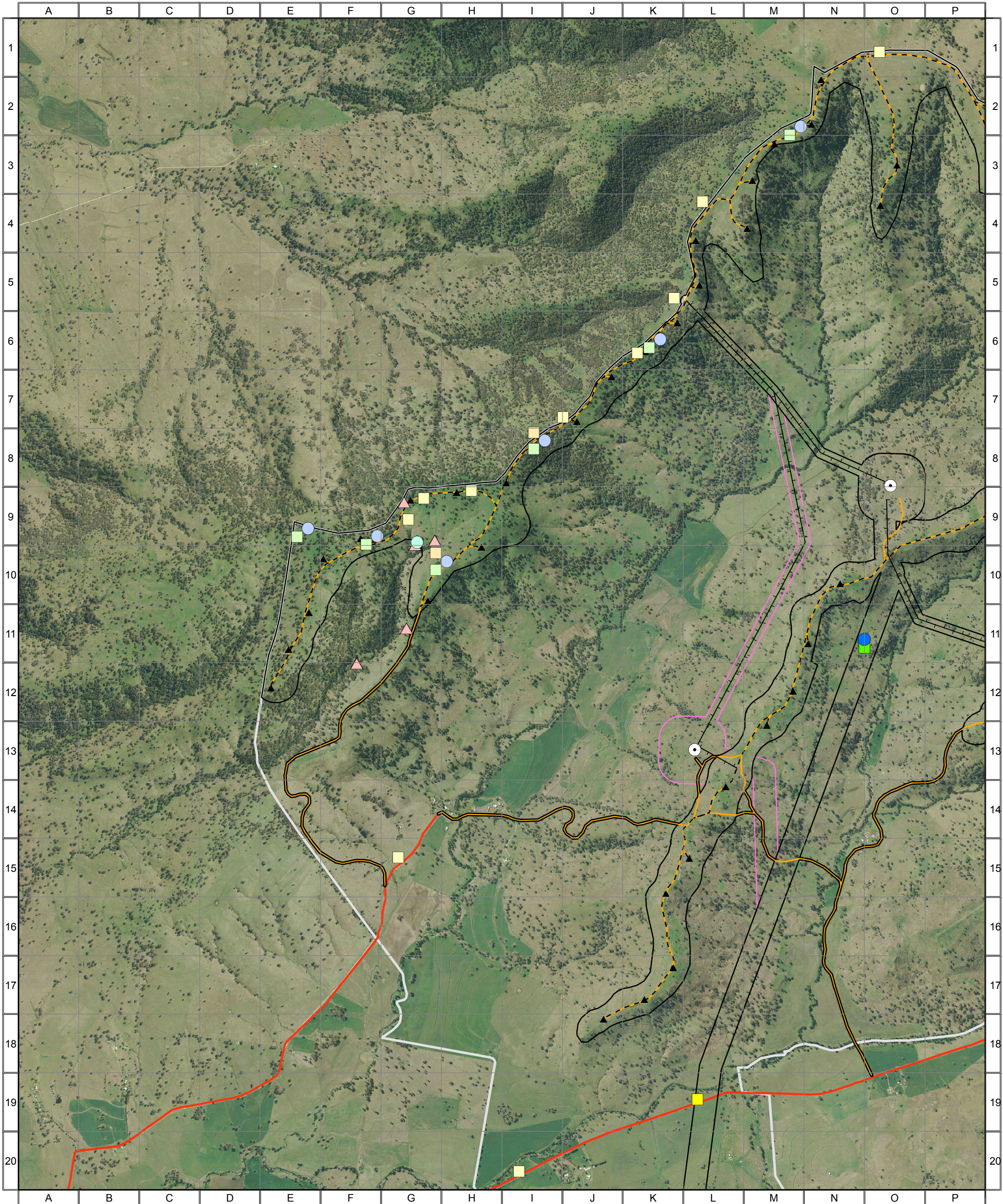


4777 - Liverpool Range (WF Study Area, Map 1) - Survey Effort



Survey Effort 2013

- ▲ Dedicated Bird Survey
- Fauna Plot
- Nocturnal (Call Playback and Spotlighting)
- Anabat
- IR Camera Trap
- Inspection Point
- Dedicated Herp Search
- Flora plot / Random Meander

Survey Effort 2012

- ▲ Dedicated Bird Survey
- Fauna Plot
- Nocturnal (Call Playback & Spotlighting)
- Anabat
- Inspection Point
- Dedicated Herp Search
- Flora plot / Random Meander

- Combined Survey Area (Preferred Infrastructure Layout)
- Combined Survey Area (Alternative Infrastructure Layout)

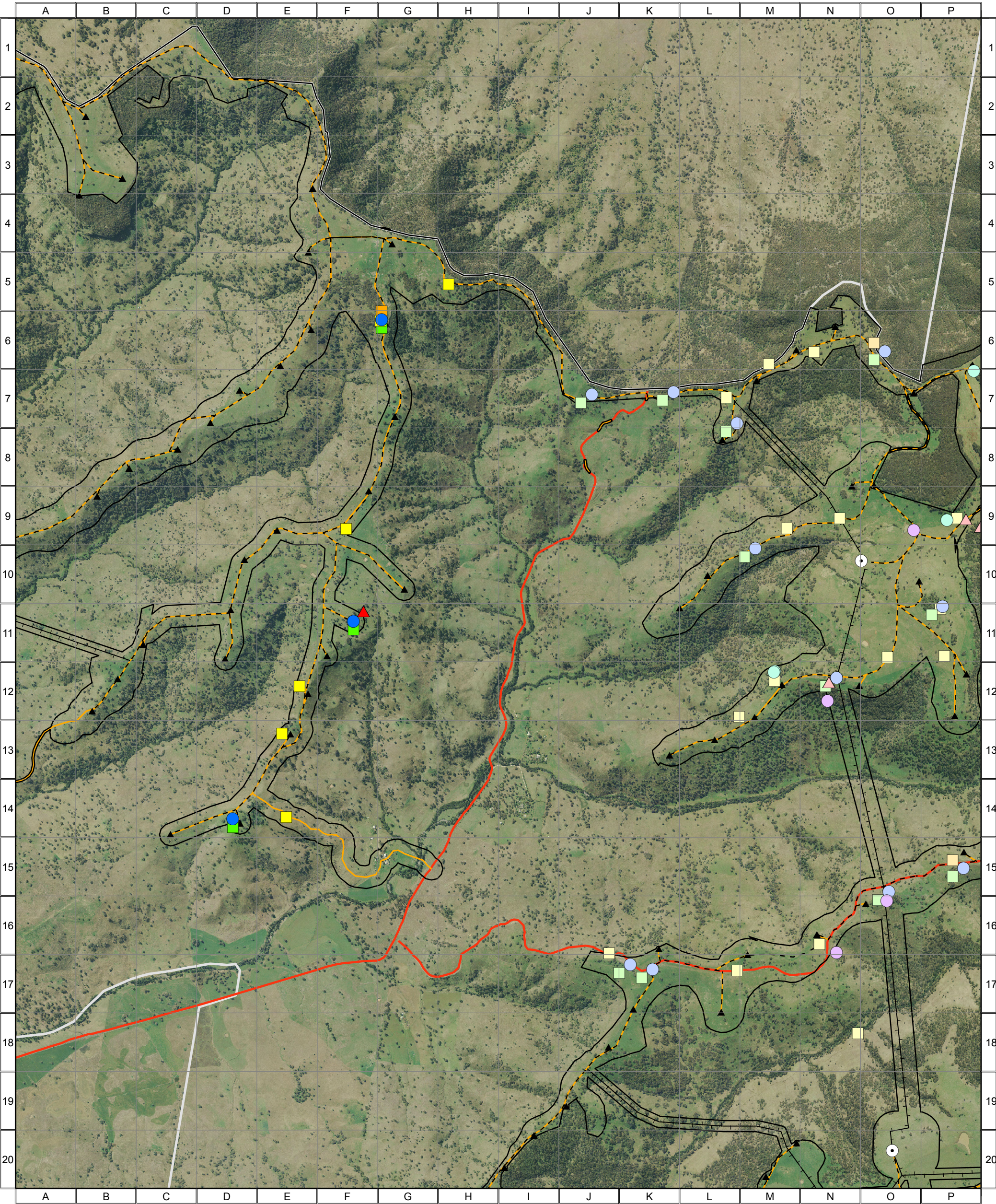
- ▲ Indicative Turbine Locations
- Substations
- Overhead Powerlines
- Underground Powerlines
- Proposed Tracks
- Existing Roads
- Wind Farm Site Boundary

ngh environmental

0 0.25 0.5 1 1.5 Kilometres

Approx. Scale @ A3 1:32500
Ref: 4777 - Liverpool Range Wind Farm
Produced by: Tom Hamilton
Date: 15 November 2013
Projection: GDA94 MGA Zone 55
Based on Infrastructure datasets provided by Epuron (2011-2013)
Aerial Photography provided by Epuron (Aug. 2011)
(C) Copyright Commonwealth of Australia (Geoscience Australia) 2008

4777 - Liverpool Range (WF Study Area, Map 2) - Survey Effort



Survey Effort 2013

- ▲ Dedicated Bird Survey
- Fauna Plot
- Nocturnal (Call Playback and Spotlighting)
- Anabat
- IR Camera Trap
- Inspection Point
- Dedicated Herp Search
- Flora plot / Random Meander

Survey Effort 2012

- ▲ Dedicated Bird Survey
- Fauna Plot
- Nocturnal (Call Playback & Spotlighting)
- Anabat
- Inspection Point
- Dedicated Herp Search
- Flora plot / Random Meander

Combined Survey Area (Preferred Infrastructure Layout)

- ▲ Indicative Turbine Locations
- Substations
- Overhead Powerlines
- - - Underground Powerlines
- Proposed Tracks
- Existing Roads
- Wind Farm Site Boundary



0 0.25 0.5 1 1.5 Kilometres

Approx. Scale @ A3 1:32500
Ref: 4777 - Liverpool Range Wind Farm
Produced by: Tom Hamilton
Date: 15 November 2013
Projection: GDA94 MGA Zone 55

Based on Infrastructure datasets provided by Epuron (2011-2013)
Aerial Photography provided by Epuron (Aug. 2011)
(C) Copyright Commonwealth of Australia (Geoscience Australia) 2008



4777 - Liverpool Range (WF Study Area, Map 3) - Survey Effort



Survey Effort 2013

- ▲ Dedicated Bird Survey
- Fauna Plot
- Nocturnal (Call Playback and Spotlighting)
- Anabat
- IR Camera Trap
- Inspection Point
- Dedicated Herp Search
- Flora plot / Random Meander

Survey Effort 2012

- ▲ Dedicated Bird Survey
- Fauna Plot
- Nocturnal (Call Playback & Spotlighting)
- Anabat
- Inspection Point
- Dedicated Herp Search
- Flora plot / Random Meander

Combined Survey Area (Preferred Infrastructure Layout)

- ▲ Indicative Turbine Locations
- Substations
- Overhead Powerlines
- - - Underground Powerlines
- Proposed Tracks
- Existing Roads
- Wind Farm Site Boundary

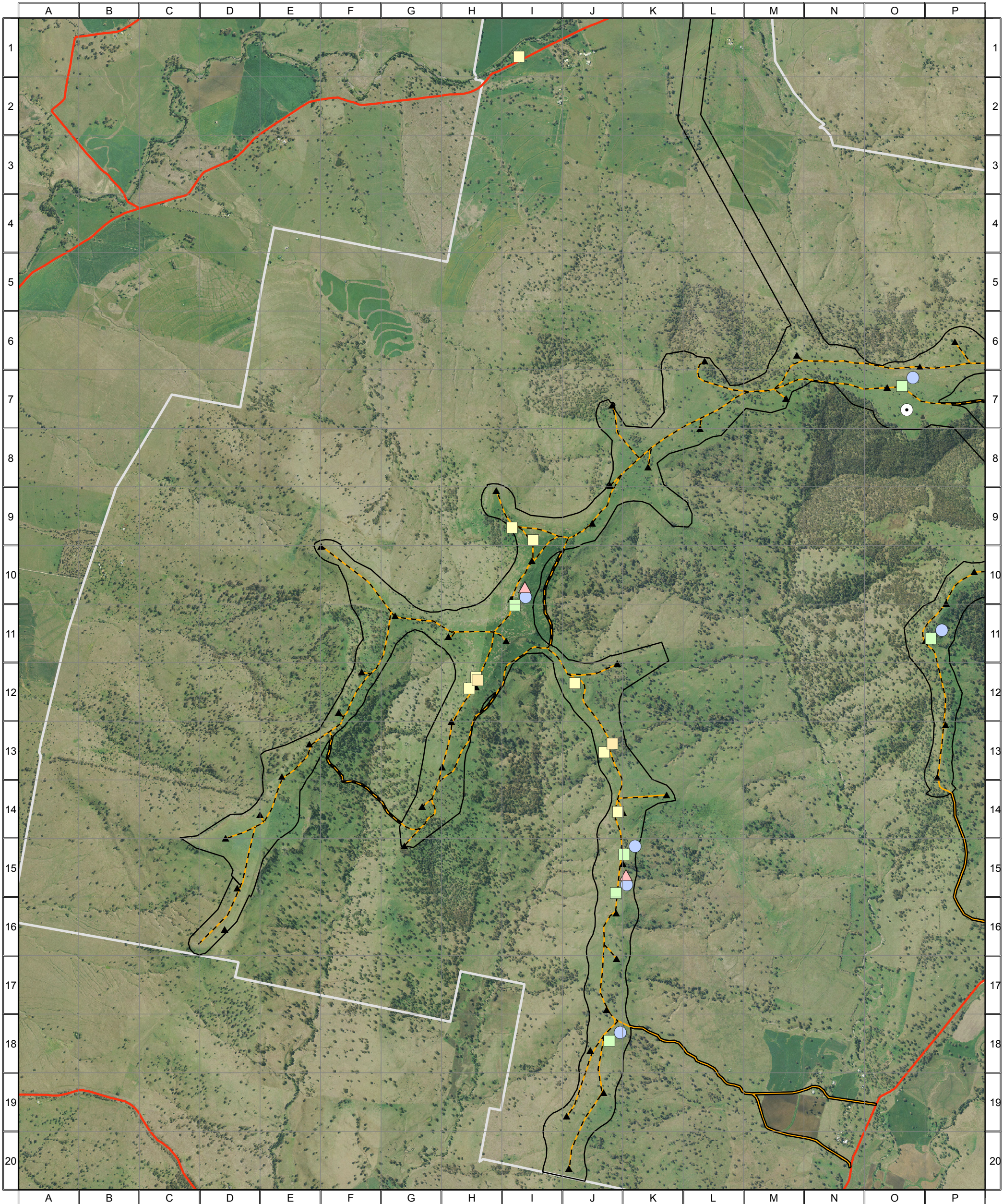


0 0.25 0.5 1 1.5 Kilometres

Approx. Scale @ A3 1:32500
Ref: 4777 - Liverpool Range Wind Farm
Produced by: Tom Hamilton
Date: 15 November 2013
Projection: GDA94 MGA Zone 55

Based on Infrastructure datasets provided by Epuron (2011-2013)
Aerial Photography provided by Epuron (Aug. 2011)
(C) Copyright Commonwealth of Australia (Geoscience Australia) 2008

4777 - Liverpool Range (WF Study Area, Map 4) - Survey Effort



Survey Effort 2013

- ▲ Dedicated Bird Survey
- Fauna Plot
- Nocturnal (Call Playback and Spotlighting)
- Anabat
- IR Camera Trap
- Inspection Point
- Dedicated Herp Search
- Flora plot / Random Meander

Survey Effort 2012

- ▲ Dedicated Bird Survey
- Fauna Plot
- Nocturnal (Call Playback & Spotlighting)
- Anabat
- Inspection Point
- Dedicated Herp Search
- Flora plot / Random Meander

Combined Survey Area (Preferred Infrastructure Layout)

- ▲ Indicative Turbine Locations
- Substations
- Overhead Powerlines
- - - Underground Powerlines
- Proposed Tracks
- Existing Roads
- Wind Farm Site Boundary



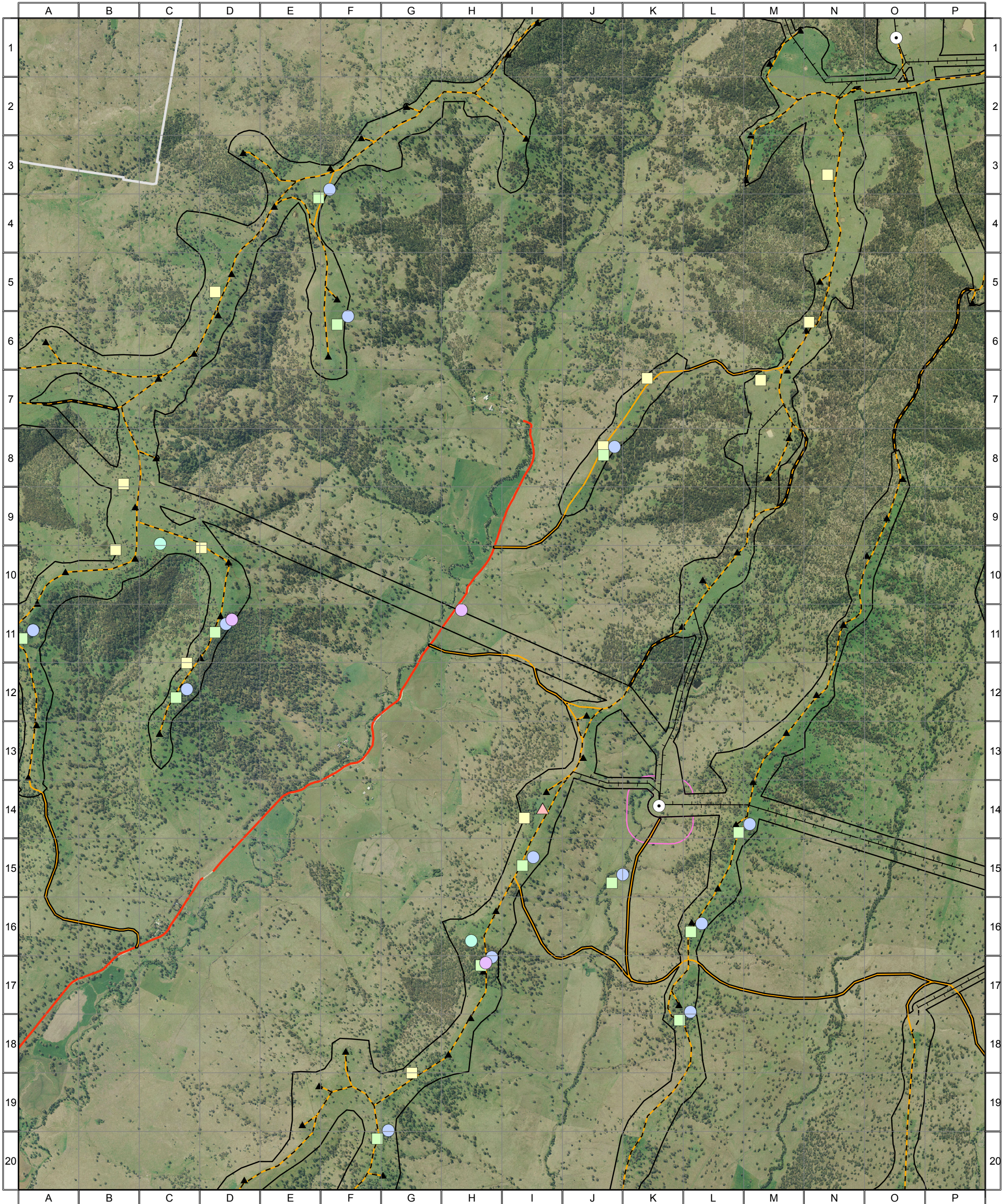
0 0.25 0.5 1 1.5 Kilometres

Approx. Scale @ A3 1:32500
Ref: 4777 - Liverpool Range Wind Farm
Produced by: Tom Hamilton
Date: 15 November 2013
Projection: GDA94 MGA Zone 55

Based on Infrastructure datasets provided by Epuron (2011-2013)
Aerial Photography provided by Epuron (Aug. 2011)
(C) Copyright Commonwealth of Australia (Geoscience Australia) 2008



4777 - Liverpool Range (WF Study Area, Map 5) - Survey Effort



Survey Effort 2013

- ▲ Dedicated Bird Survey
- Fauna Plot
- Nocturnal (Call Playback and Spotlighting)
- Anabat
- IR Camera Trap
- Inspection Point
- Dedicated Herp Search
- Flora plot / Random Meander

Survey Effort 2012

- ▲ Dedicated Bird Survey
- Fauna Plot
- Nocturnal (Call Playback & Spotlighting)
- Anabat
- Inspection Point
- Dedicated Herp Search
- Flora plot / Random Meander

- Combined Survey Area (Preferred Infrastructure Layout)
- Combined Survey Area (Alternative Infrastructure Layout)

- ▲ Indicative Turbine Locations
- Substations
- Overhead Powerlines
- Underground Powerlines
- Proposed Tracks
- Existing Roads
- Wind Farm Site Boundary



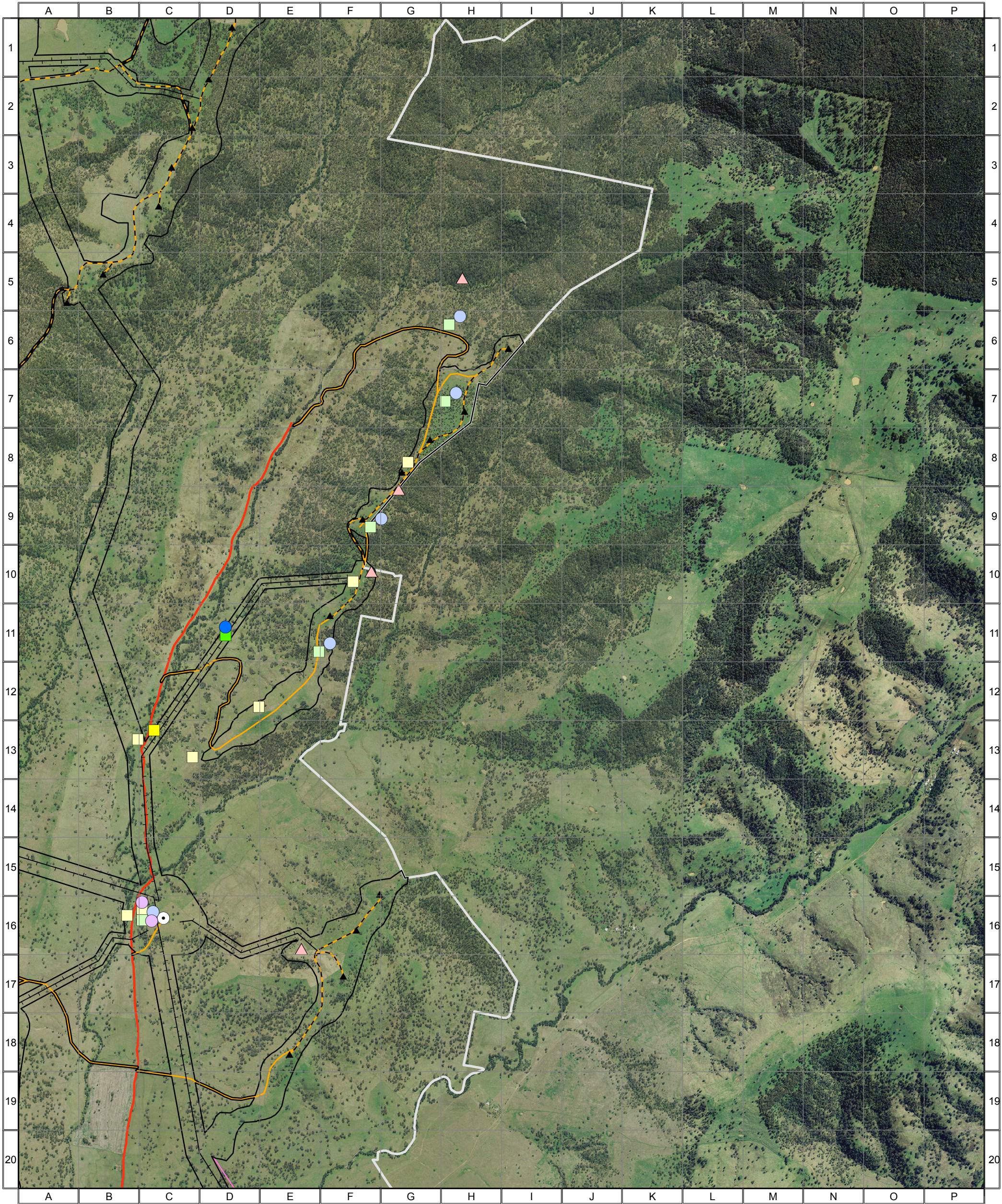
0 0.25 0.5 1 1.5 Kilometres

Approx. Scale @ A3 1:32500
Ref: 4777 - Liverpool Range Wind Farm
Produced by: Tom Hamilton
Date: 15 November 2013
Projection: GDA94 MGA Zone 55

Based on Infrastructure datasets provided by Epuron (2011-2013)
Aerial Photography provided by Epuron (Aug. 2011)
(C) Copyright Commonwealth of Australia (Geoscience Australia) 2008



4777 - Liverpool Range (WF Study Area, Map 6) - Survey Effort



Survey Effort 2013

- ▲ Dedicated Bird Survey
- Fauna Plot
- Nocturnal (Call Playback and Spotlighting)
- Anabat
- IR Camera Trap
- Inspection Point
- Dedicated Herp Search
- Flora plot / Random Meander

Survey Effort 2012

- ▲ Dedicated Bird Survey
- Fauna Plot
- Nocturnal (Call Playback & Spotlighting)
- Anabat
- Inspection Point
- Dedicated Herp Search
- Flora plot / Random Meander

- Combined Survey Area (Preferred Infrastructure Layout)
- Combined Survey Area (Alternative Infrastructure Layout)

- ▲ Indicative Turbine Locations
- Substations
- Overhead Powerlines
- - - Underground Powerlines
- Proposed Tracks
- Existing Roads
- Wind Farm Site Boundary



0 0.25 0.5 1 1.5 Kilometres

Approx. Scale @ A3 1:32500
Ref: 4777 - Liverpool Range Wind Farm
Produced by: Tom Hamilton
Date: 15 November 2013
Projection: GDA94 MGA Zone 55

Based on Infrastructure datasets provided by Epuron (2011-2013)
Aerial Photography provided by Epuron (Aug. 2011)
(C) Copyright Commonwealth of Australia (Geoscience Australia) 2008



4777 - Liverpool Range (WF Study Area, Map 7) - Survey Effort



Survey Effort 2013

- ▲ Dedicated Bird Survey
- Fauna Plot
- Nocturnal (Call Playback and Spotlighting)
- Anabat
- IR Camera Trap
- Inspection Point
- Dedicated Herp Search
- Flora plot / Random Meander

Survey Effort 2012

- ▲ Dedicated Bird Survey
- Fauna Plot
- Nocturnal (Call Playback & Spotlighting)
- Anabat
- Inspection Point
- Dedicated Herp Search
- Flora plot / Random Meander

Combined Survey Area (Preferred Infrastructure Layout)

- ▲ Indicative Turbine Locations
- Substations
- Overhead Powerlines
- - - Underground Powerlines
- Proposed Tracks
- Existing Roads
- Wind Farm Site Boundary



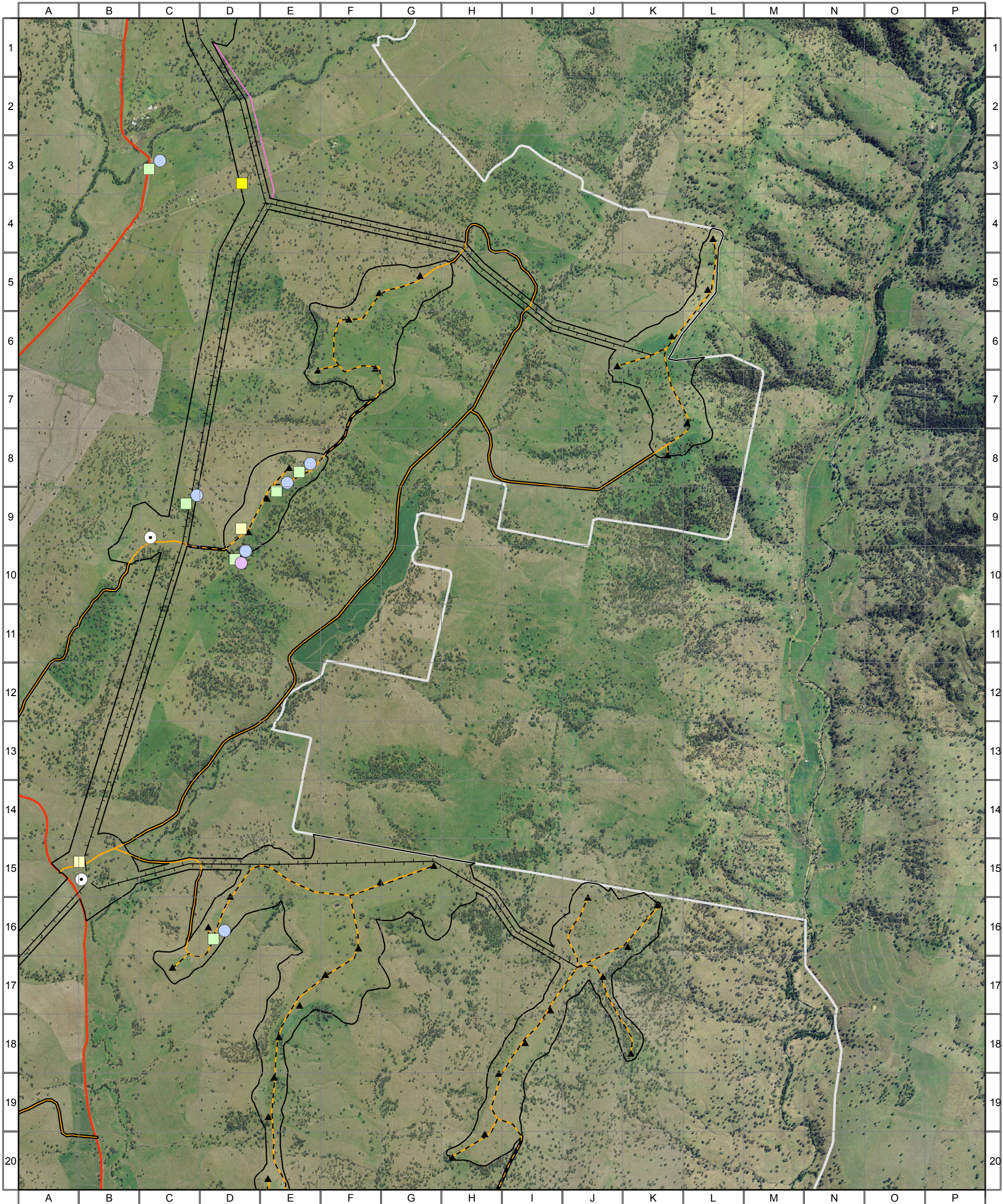
0 0.25 0.5 1 1.5 Kilometres

Approx. Scale @ A3 1:32500
Ref: 4777 - Liverpool Range Wind Farm
Produced by: Tom Hamilton
Date: 15 November 2013
Projection: GDA94 MGA Zone 55

Based on Infrastructure datasets provided by Epuron (2011-2013)
Aerial Photography provided by Epuron (Aug. 2011)
(C) Copyright Commonwealth of Australia (Geoscience Australia) 2008



4777 - Liverpool Range (WF Study Area, Map 8) - Survey Effort



Survey Effort 2013

- ▲ Dedicated Bird Survey
- Fauna Plot
- Nocturnal (Call Playback and Spotlighting)
- Anabat
- IR Camera Trap
- Inspection Point
- Dedicated Herp Search
- Flora plot / Random Meander

Survey Effort 2012

- ▲ Dedicated Bird Survey
- Fauna Plot
- Nocturnal (Call Playback & Spotlighting)
- Anabat
- Inspection Point
- Dedicated Herp Search
- Flora plot / Random Meander

- Combined Survey Area (Preferred Infrastructure Layout)
- Combined Survey Area (Alternative Infrastructure Layout)

- ▲ Indicative Turbine Locations
- Substations
- Overhead Powerlines
- Underground Powerlines
- Proposed Tracks
- Existing Roads
- Wind Farm Site Boundary

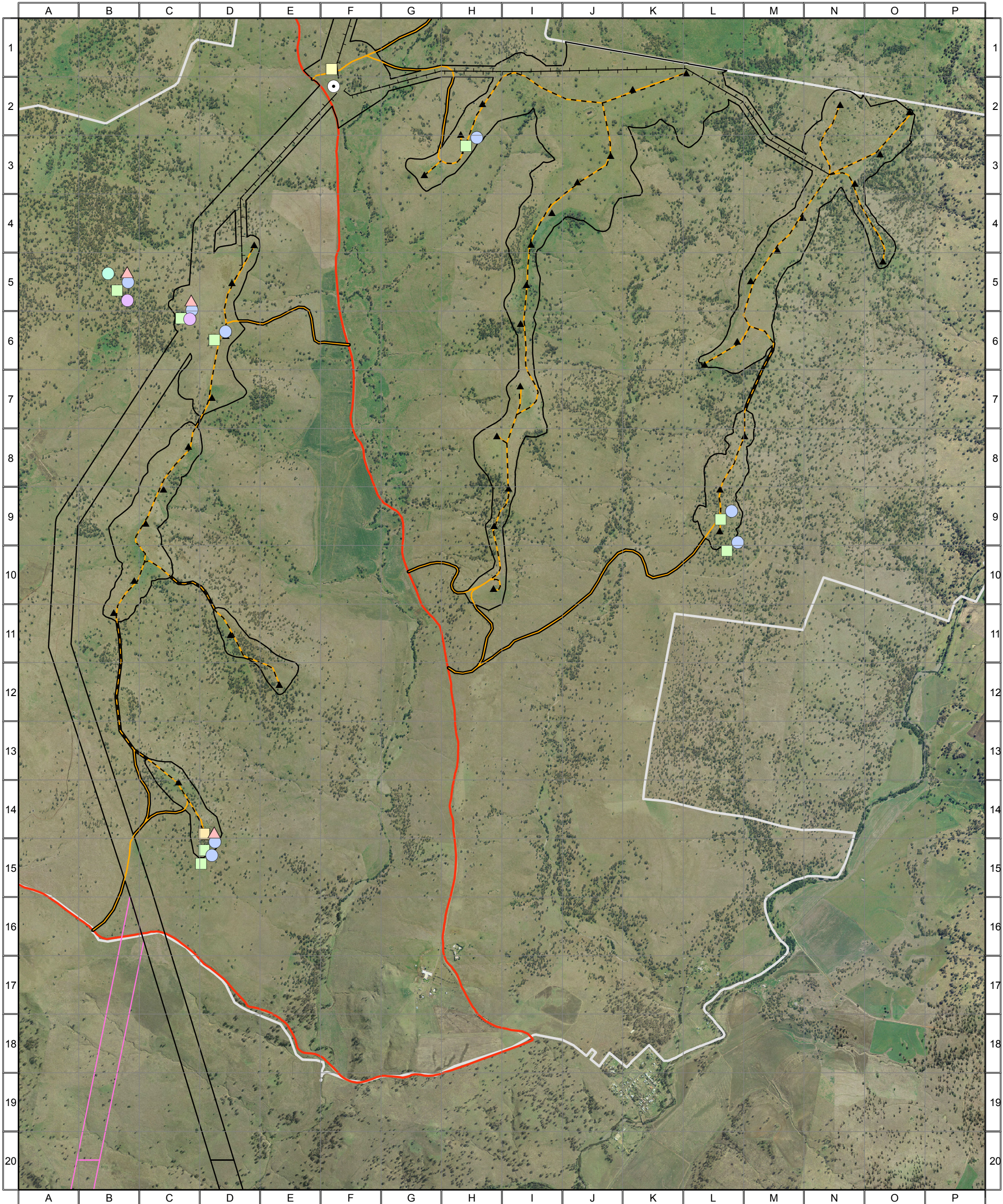
ngh environmental

0 0.25 0.5 1 1.5 Kilometres

Approx. Scale @ A3 1:32500
Ref: 4777 - Liverpool Range Wind Farm
Produced by: Tom Hamilton
Date: 15 November 2013
Projection: GDA94 MGA Zone 55

Based on Infrastructure datasets provided by Epuron (2011-2013)
Aerial Photography provided by Epuron (Aug. 2011)
(C) Copyright Commonwealth of Australia (Geoscience Australia) 2008

4777 - Liverpool Range (WF Study Area, Map 9) - Survey Effort



Survey Effort 2013

- ▲ Dedicated Bird Survey
- Fauna Plot
- Nocturnal (Call Playback and Spotlighting)
- Anabat
- IR Camera Trap
- Inspection Point
- Dedicated Herp Search
- Flora plot / Random Meander

Survey Effort 2012

- ▲ Dedicated Bird Survey
- Fauna Plot
- Nocturnal (Call Playback & Spotlighting)
- Anabat
- Inspection Point
- Dedicated Herp Search
- Flora plot / Random Meander

- Combined Survey Area (Preferred Infrastructure Layout)
- Combined Survey Area (Alternative Infrastructure Layout)

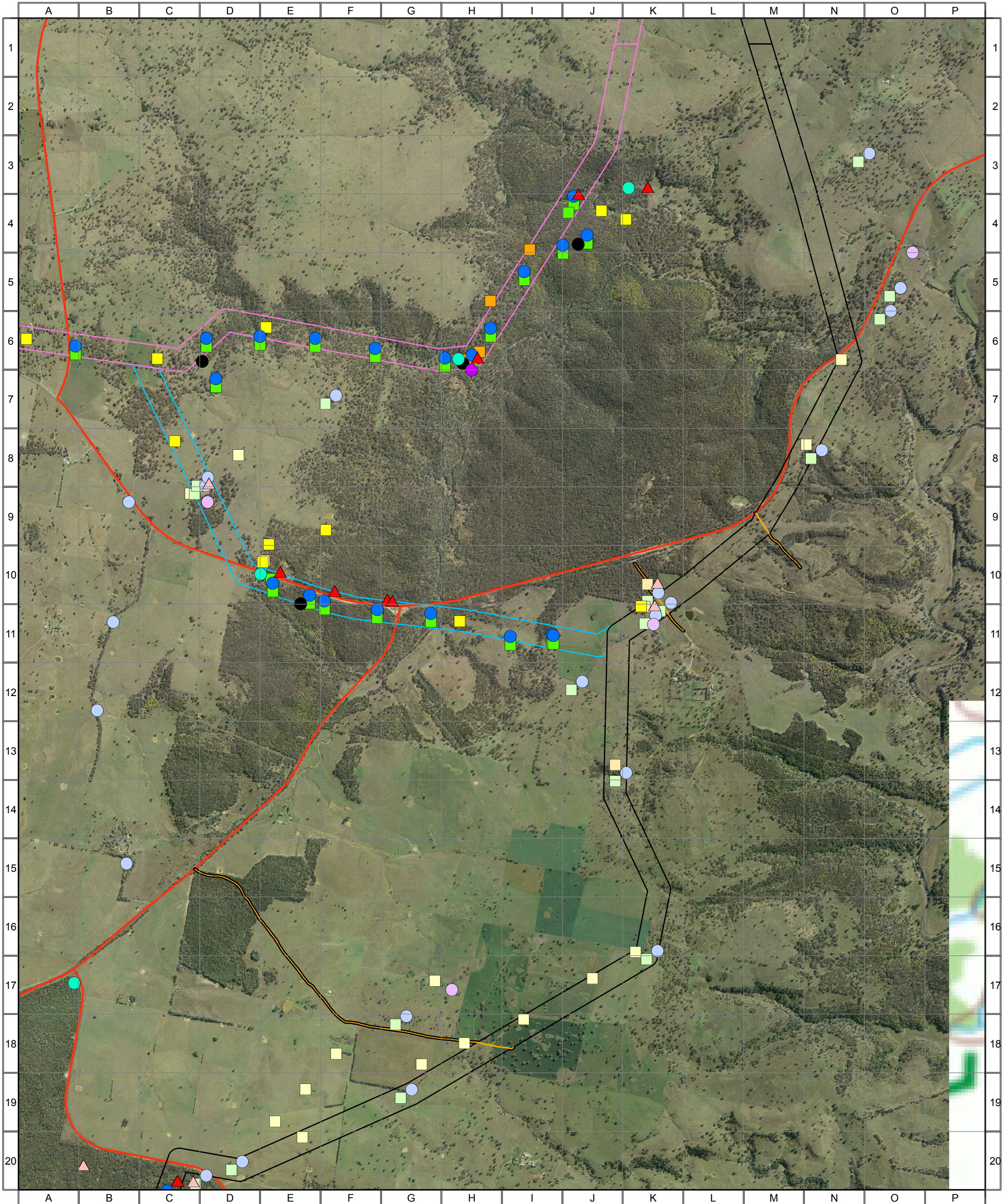
- ▲ Indicative Turbine Locations
- Substations
- Overhead Powerlines
- Underground Powerlines
- Proposed Tracks
- Existing Roads
- Wind Farm Site Boundary

ngh environmental

0 0.25 0.5 1 1.5 Kilometres

Approx. Scale @ A3 1:32500
Ref: 4777 - Liverpool Range Wind Farm
Produced by: Tom Hamilton
Date: 15 November 2013
Projection: GDA94 MGA Zone 55
Based on Infrastructure datasets provided by Epuron (2011-2013)
Aerial Photography provided by Epuron (Aug. 2011)
(C) Copyright Commonwealth of Australia (Geoscience Australia) 2008

4777 - Liverpool Range (TL Study Area, Map 1) - Survey Effort



Survey Effort 2013

- ▲ Dedicated Bird Survey
- Fauna Plot
- Nocturnal (Call Playback and Spotlighting)
- Anabat
- IR Camera Trap
- Inspection Point
- Dedicated Herp Search
- Flora plot / Random Meander

Survey Effort 2012

- ▲ Dedicated Bird Survey
- Fauna Plot
- Nocturnal (Call Playback & Spotlighting)
- Anabat
- Inspection Point
- Dedicated Herp Search
- Flora plot / Random Meander

- Combined Survey Area (Preferred Infrastructure Layout)
- Combined Survey Area (Alternative Infrastructure Layout)
- Combined Survey Area (2nd Alternative Infrastructure Layout)

- ▲ Indicative Turbine Locations
- Substations
- Overhead Powerlines
- Underground Powerlines
- Proposed Tracks
- Existing Roads
- Wind Farm Site Boundary

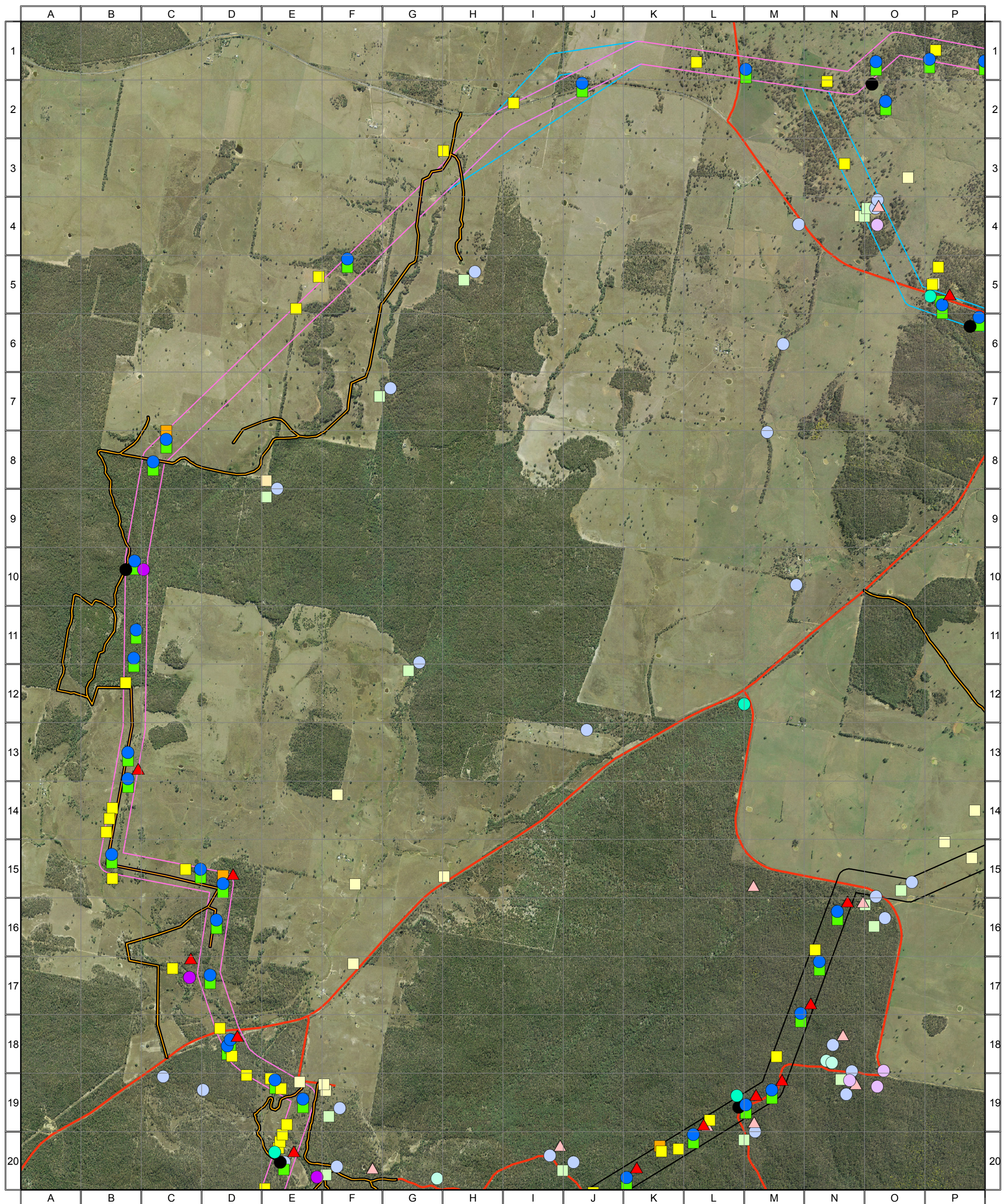


0 0.25 0.5 1 1.5 Kilometres

Approx. Scale @ A3 1:32500
Ref: 4777 - Liverpool Range Wind Farm
Produced by: Tom Hamilton
Date: 15 November 2013
Projection: GDA94 MGA Zone 55

Based on Infrastructure datasets provided by Epuron (2011-2013)
Aerial Photography provided by Epuron (Aug. 2011)
(C) Copyright Commonwealth of Australia (Geoscience Australia) 2008








4777 - Liverpool Range (TL Study Area, Map 2) - Survey Effort






Survey Effort 2013

-  Dedicated Bird Survey
-  Fauna Plot
-  Nocturnal (Call Playback and Spotlighting)
-  Anabat
-  IR Camera Trap
-  Inspection Point
-  Dedicated Herp Search
-  Flora plot / Random Meander

Survey Effort 2012

-  Dedicated Bird Survey
-  Fauna Plot
-  Nocturnal (Call Playback & Spotlighting)
-  Anabat
-  Inspection Point
-  Dedicated Herp Search
-  Flora plot / Random Meander

-  Combined Survey Area (Preferred Infrastructure Layout)
 Combined Survey Area (Alternative Infrastructure Layout)
 Combined Survey Area (2nd Alternative Infrastructure Layout)

- ▲ Indicative Turbine Locations
- Substations
- Overhead Powerlines
- - - Underground Powerlines
- Proposed Tracks
- Existing Roads
- Wind Farm Site Boundary



0 0.25 0.5 1 1.5 Kilometres

Approx. Scale @ A3 1:32500

Ref: 4777 - Liverpool Range Wind Farm

Produced by: Tom Hamilton

Date: 15 November 2013

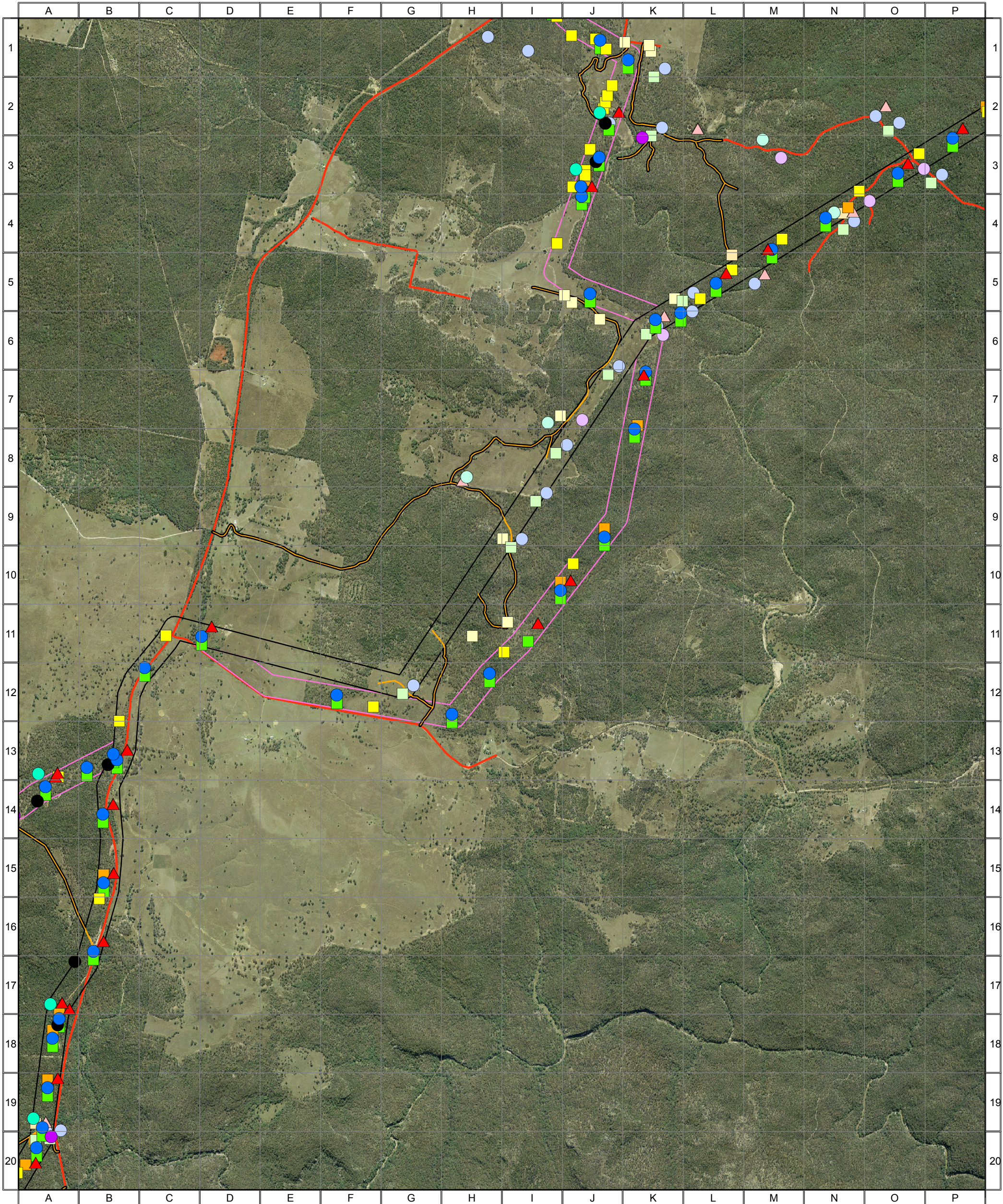
Projection: GDA94 MGA Zone 55

Based on Infrastructure datasets provided by Epuron (2011-2013)
Aerial Photography provided by Epuron (Aug. 2011)

(C) Copyright Commonwealth of Australia (Geoscience Australia) 2008



4777 - Liverpool Range (TL Study Area, Map 3) - Survey Effort



Survey Effort 2013

- ▲ Dedicated Bird Survey
- Fauna Plot
- Nocturnal (Call Playback and Spotlighting)
- Anabat
- IR Camera Trap
- Inspection Point
- Dedicated Herp Search
- Flora plot / Random Meander

Survey Effort 2012

- ▲ Dedicated Bird Survey
- Fauna Plot
- Nocturnal (Call Playback & Spotlighting)
- Anabat
- Inspection Point
- Dedicated Herp Search
- Flora plot / Random Meander

- Combined Survey Area (Preferred Infrastructure Layout)
- Combined Survey Area (Alternative Infrastructure Layout)

- ▲ Indicative Turbine Locations
- Substations
- Overhead Powerlines
- Underground Powerlines
- Proposed Tracks
- Existing Roads
- Wind Farm Site Boundary

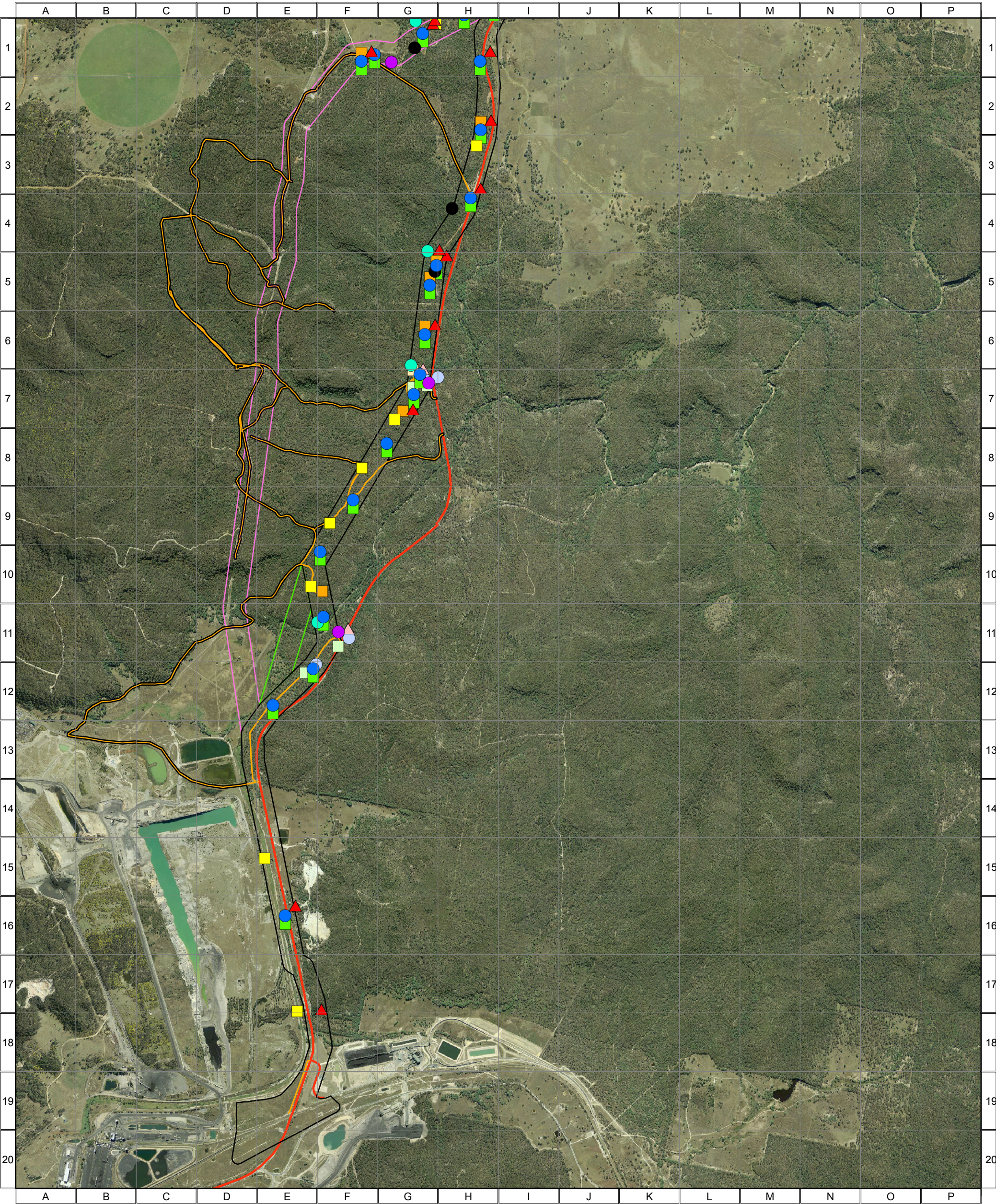
ngh environmental

0 0.25 0.5 1 1.5 Kilometres

Approx. Scale @ A3 1:32500
Ref: 4777 - Liverpool Range Wind Farm
Produced by: Tom Hamilton
Date: 15 November 2013
Projection: GDA94 MGA Zone 55

Based on Infrastructure datasets provided by Epuron (2011-2013)
Aerial Photography provided by Epuron (Aug. 2011)
(C) Copyright Commonwealth of Australia (Geoscience Australia) 2008

4777 - Liverpool Range (TL Study Area, Map 4) - Survey Effort



Survey Effort 2013

- ▲ Dedicated Bird Survey
- Fauna Plot
- Nocturnal (Call Playback and Spotlighting)
- Anabat
- IR Camera Trap
- Inspection Point
- Dedicated Herp Search
- Flora plot / Random Meander

Survey Effort 2012

- ▲ Dedicated Bird Survey
- Fauna Plot
- Nocturnal (Call Playback & Spotlighting)
- Anabat
- Inspection Point
- Dedicated Herp Search
- Flora plot / Random Meander

- Combined Survey Area (Preferred Infrastructure Layout)
- Proposed deviation for Square-tailed Kite nest buffer
- Combined Survey Area (Alternative Infrastructure Layout)

- ▲ Indicative Turbine Locations
- Substations
- Overhead Powerlines
- Underground Powerlines
- Proposed Tracks
- Existing Roads
- Wind Farm Site Boundary



0 0.25 0.5 1 1.5 Kilometres

Approx. Scale @ A3 1:32500
Ref: 4777 - Liverpool Range Wind Farm
Produced by: Tom Hamilton
Date: 15 November 2013
Projection: GDA94 MGA Zone 55

Based on Infrastructure datasets provided by Epuron (2011-2013)
Aerial Photography provided by Epuron (Aug. 2011)
(C) Copyright Commonwealth of Australia (Geoscience Australia) 2008

