



Figure B1.4: Landscape section, proposed primary road



Figure B1.5: Landscape section, proposed primary road

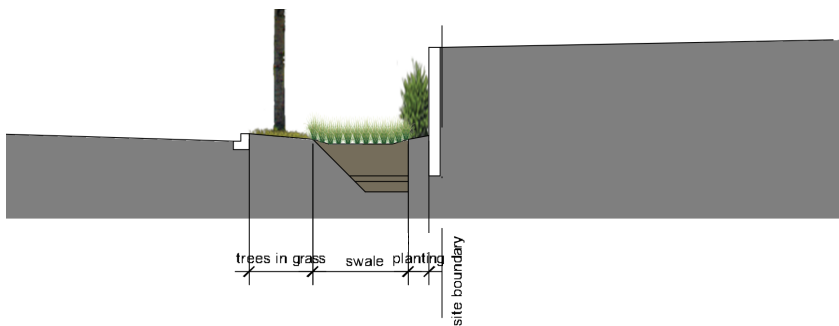


Figure B1.6: Landscape detail section of swale



Figure B1.7: Precedent images - Swale

B1 OPEN SPACE CONCEPT

Streets

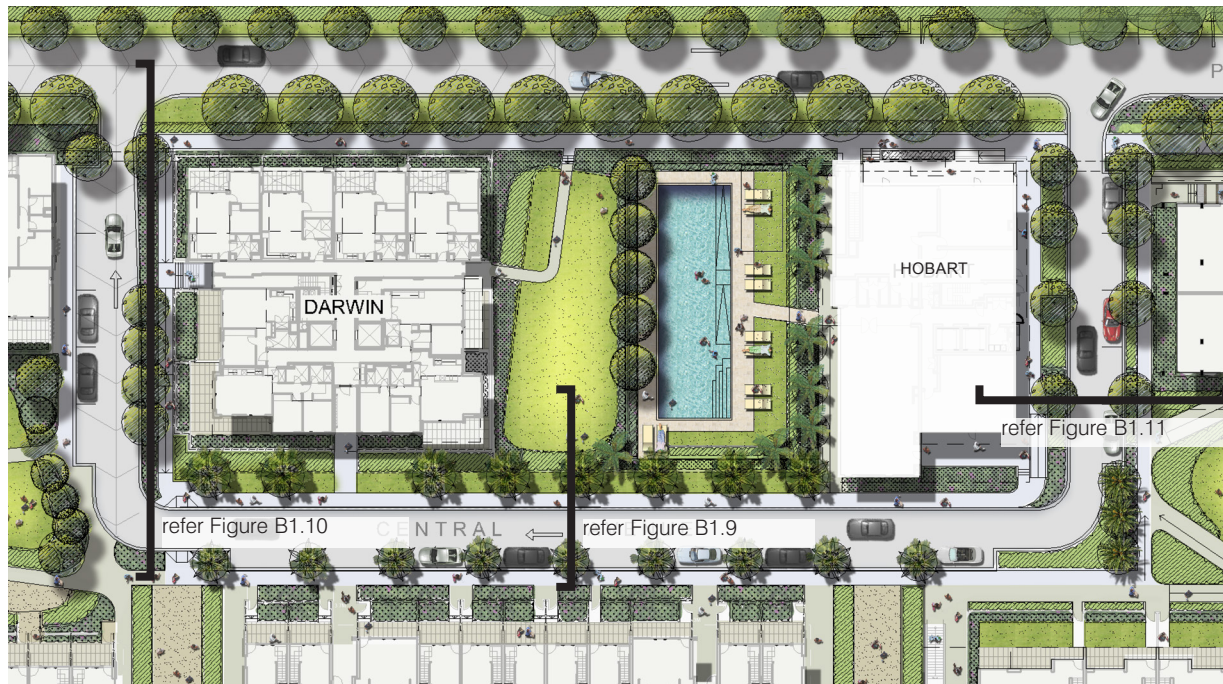
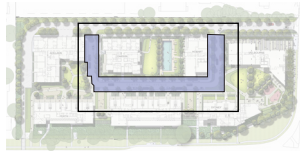


Figure B1.8: Detail plan of proposed internal road / central avenue

Internal access Road

The two internal north-south access roads act as primary vehicular and pedestrian connections between the east-west primary road and the carpark and lobby entries for the buildings.

These two north-south streets are designed to have deep soil planters to support medium sized trees that will flank the road creating shaded and sheltered major footpath routes in the summer, that are clearly separated from the traffic.

It is proposed that this street tree planting will be deciduous to provide visual interest and variety.

The east-west component of the internal access road (Central Avenue), will provide on-grade car parking for residents and visitors as well as an internal east-west connection for pedestrians and vehicles.

All of the main landscape spaces and buildings are directly visible and accessible from the Central Avenue, with much of the pedestrian network linking directly to it.

The Central Avenue will have a distinctive form of planting that accentuates the east-west alignment of the road and activates the character of the street at low-medium level, without overwhelming the streetscape and reducing the feeling of openness, safety and solar access to adjacent residential buildings.

Components

- on street parking
- street tree planting
- lighting
- wayfinding
- signage





Figure B1.9: Landscape section, central avenue



Figure B1.10: Landscape section, internal road



Figure B1.11: Landscape section, internal road



Figure B1.12: Precedent images

B1 OPEN SPACE CONCEPT

Open spaces



Figure B1.13: Detail plan of entry plaza

Entry area

The Entry area is an open outdoor paved area that will form an address to the main entry of the development.

There is the potential to reuse the existing mature Phoenix canariensis (Canary Island Date Palms) from site to line the Herring Road facade and produce an imposing arrival to site.

The use of different paving finishes and patterns is proposed together with various items of furniture to create an entry feature.

Components

- feature mature palms
- identity + entry
- seating
- wayfinding
- signage
- bike racks



Figure B1.14: Precedent images

