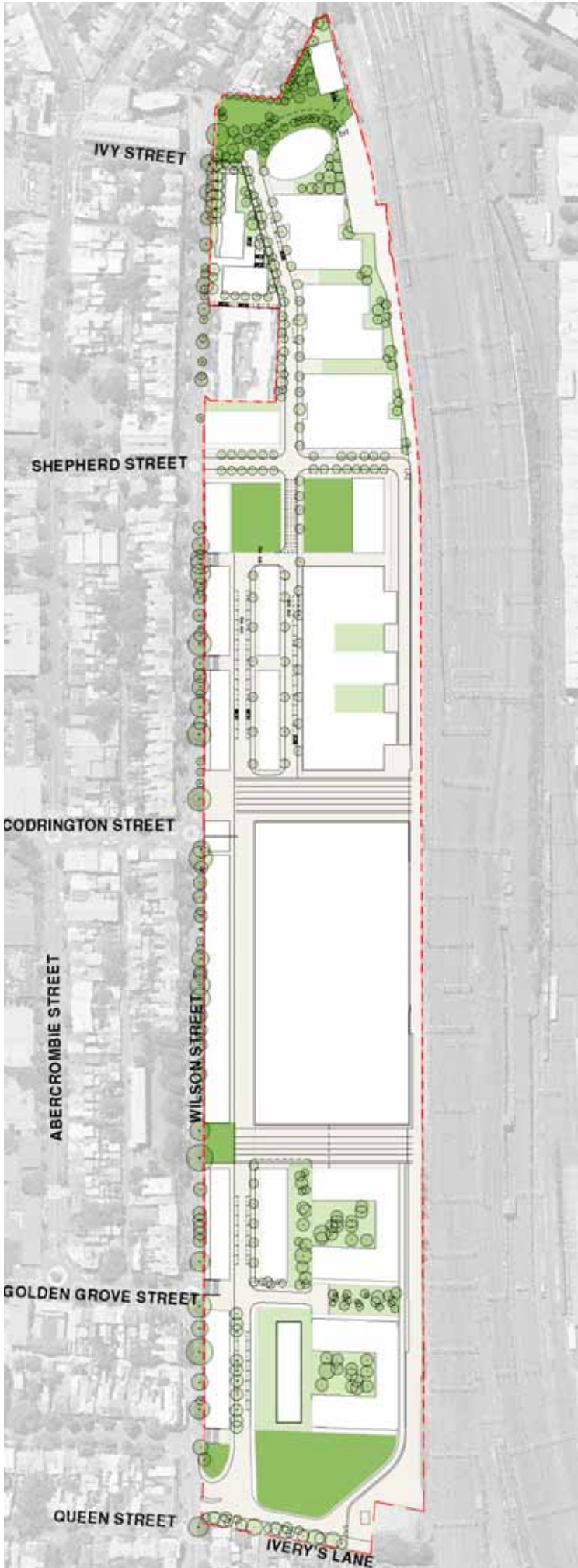




Open Space Plan
Scale 1:2500







Legend

-  Public Parks
-  Private Open Space

Parks and Public Domain Plan
Scale 1:2500



Legend





	Approximate
 Public parks to be dedicated	9,401sqm
 Roads to be dedicated	12,284sqm
 Public domain to be dedicated	744sqm
 Other public domain	5,807sqm
Total Public Parks	9,401sqm
Total Public Domain	6,551sqm
Total Public Parks & Public Domain	15,952sqm (15% of site area)

September 2008 S10914

**Land Use Plan
Eastern Site
Scale 1:1250**



Legend





-  Residential
-  Office/ Retail
-  Heritage - adaptive reuse
-  Public Open Space

September 2008 S10914

**Land Use Plan
Central and Western Sites
Scale 1:1250**

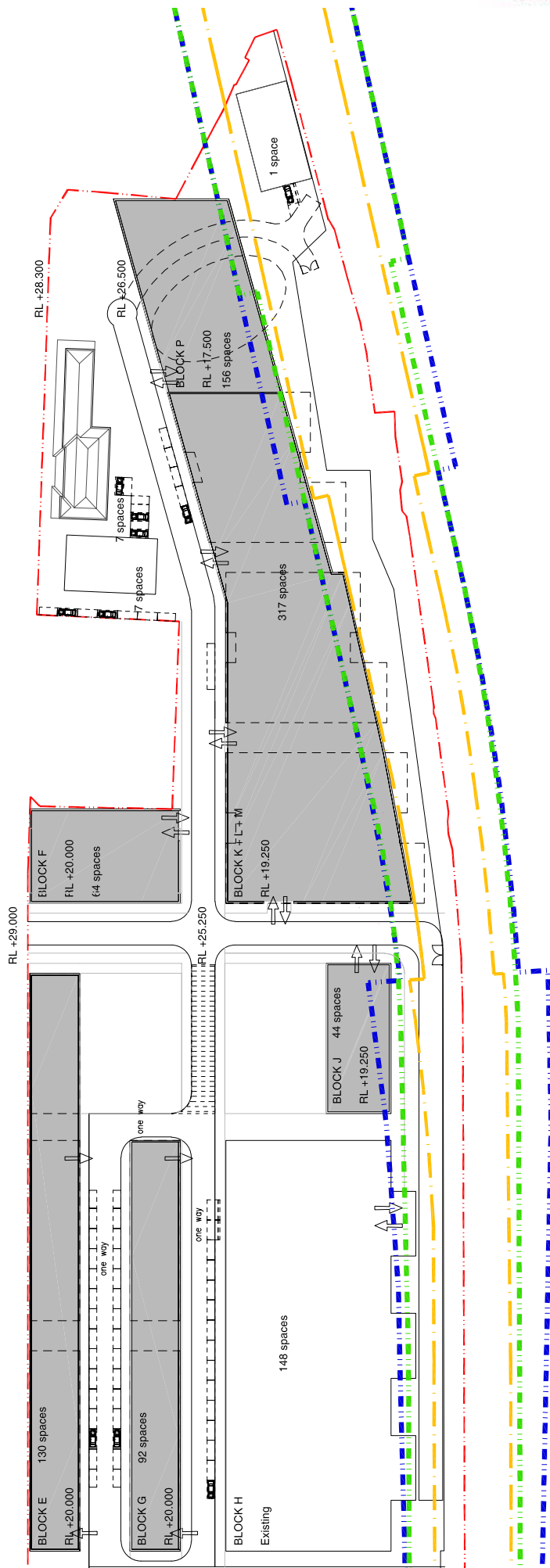


Legend

-  Residential
-  Office/ Retail
-  Heritage - adaptive reuse
-  Public Open Space



Indicative Parking Provision Eastern Site Scale 1:1250

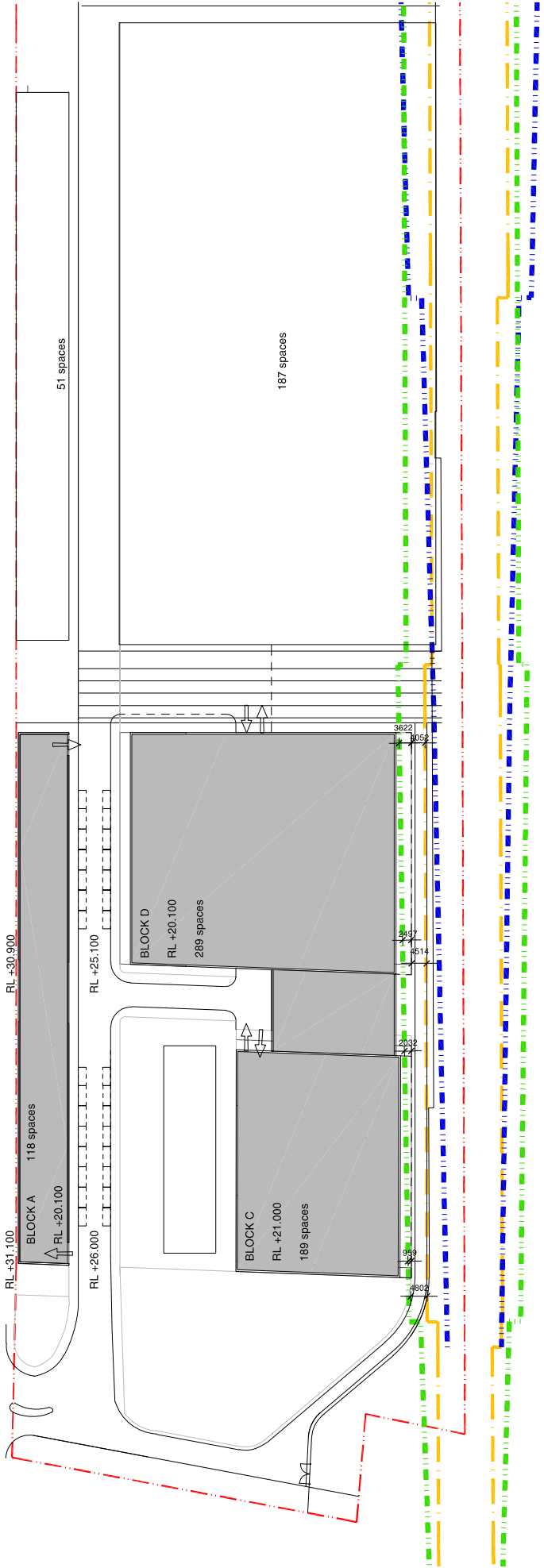


Future Railcorp Infrastructure

- — — — **Exclusion Zone**
Foundations/Structures not permitted
- — — — **Zone which may be intersected by discrete foundations eg. piles but within which foundations/structures may not bear and shall be transferred to below the zone.**
Any basement slabs or 'on ground' slabs must be suspended and any loads thereof transferred to below the zone.
- — — — **Zone which may be intersected by discrete or continuous foundations/structures but within which foundations/structures may not bear and shall be transferred to below zone.**
- — — — **Site Boundary**



**Indicative Parking Provision
Central and Western Sites
Scale 1:1250**



Future Railcorp Infrastructure

- Exclusion Zone**
Foundations/Structures not permitted
- Zone which may be intersected by discrete foundations eg. piles but within which foundations/structures may not bear and shall be transferred to below the zone.**
Any basement slabs or 'on ground' slabs must be suspended and any loads thereof transferred to below the zone.
- Zone which may be intersected by discrete or continuous foundations/structures but within which foundations/structures may not bear and shall be transferred to below zone.**
- Site Boundary**

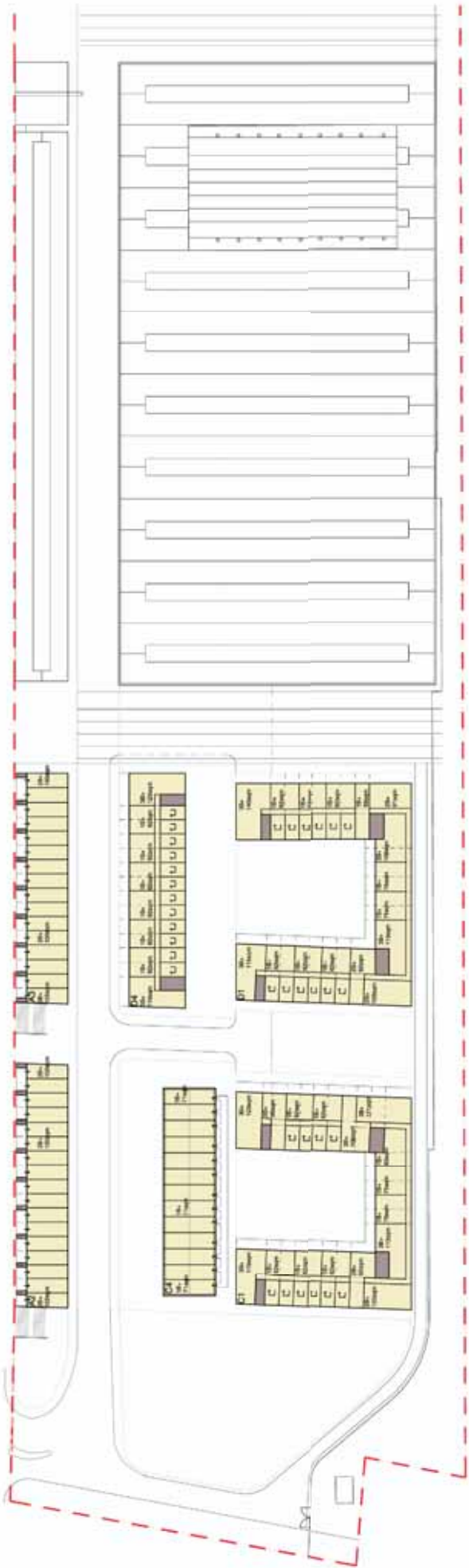
**Ground Floor Plan
Eastern Site
Scale 1:1250**

**Indicative Apartment Layouts
(Not for approval)**



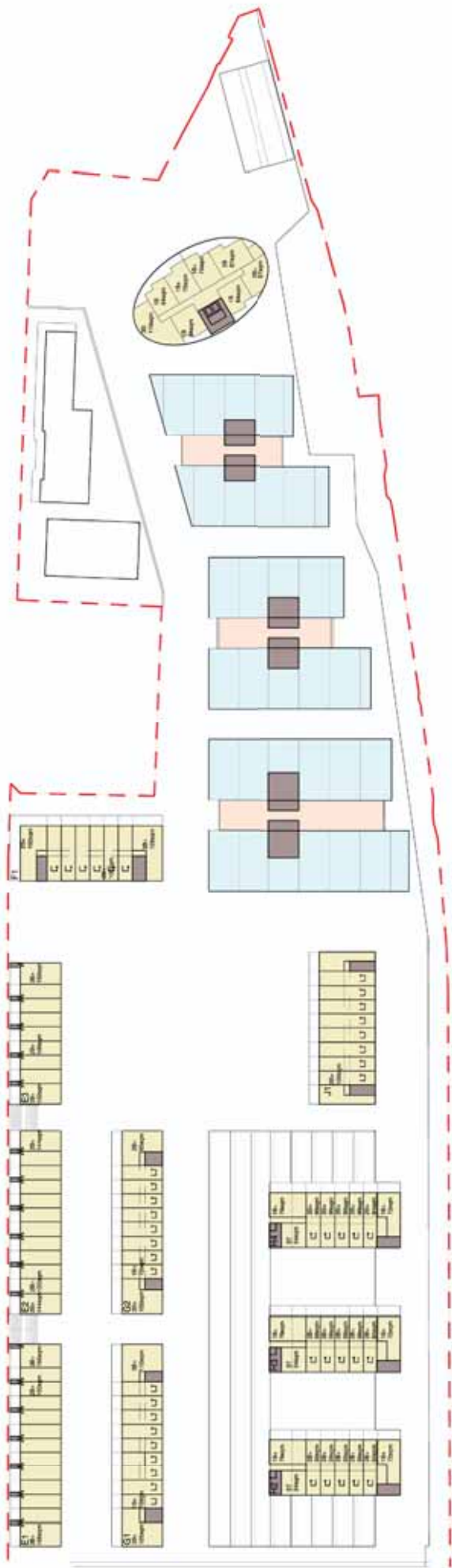
**Ground Floor Plan
Central and Western Sites
Scale 1:1250**

**Indicative Apartment Layouts
(Not for approval)**



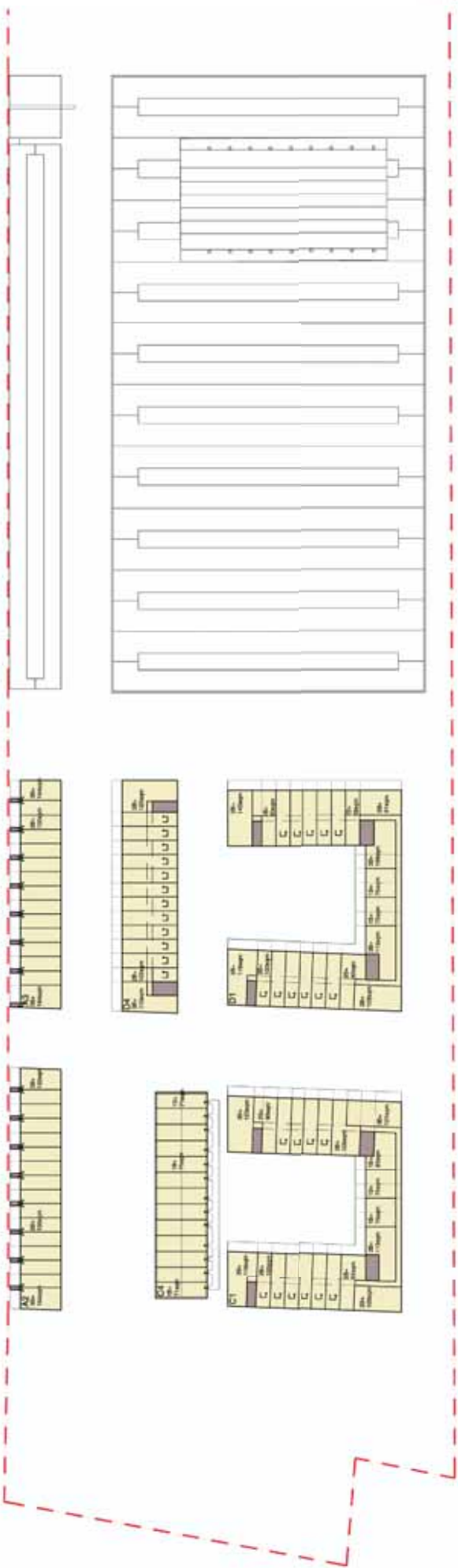
**Typical Upper Floor Plan
Eastern Site
Scale 1:1250**

**Indicative Apartment Layouts
(Not for approval)**



**Typical Upper Floor Plan
Central and Western Sites
Scale 1:1250**

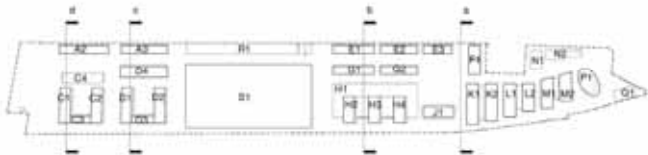
**Indicative Apartment Layouts
(Not for approval)**



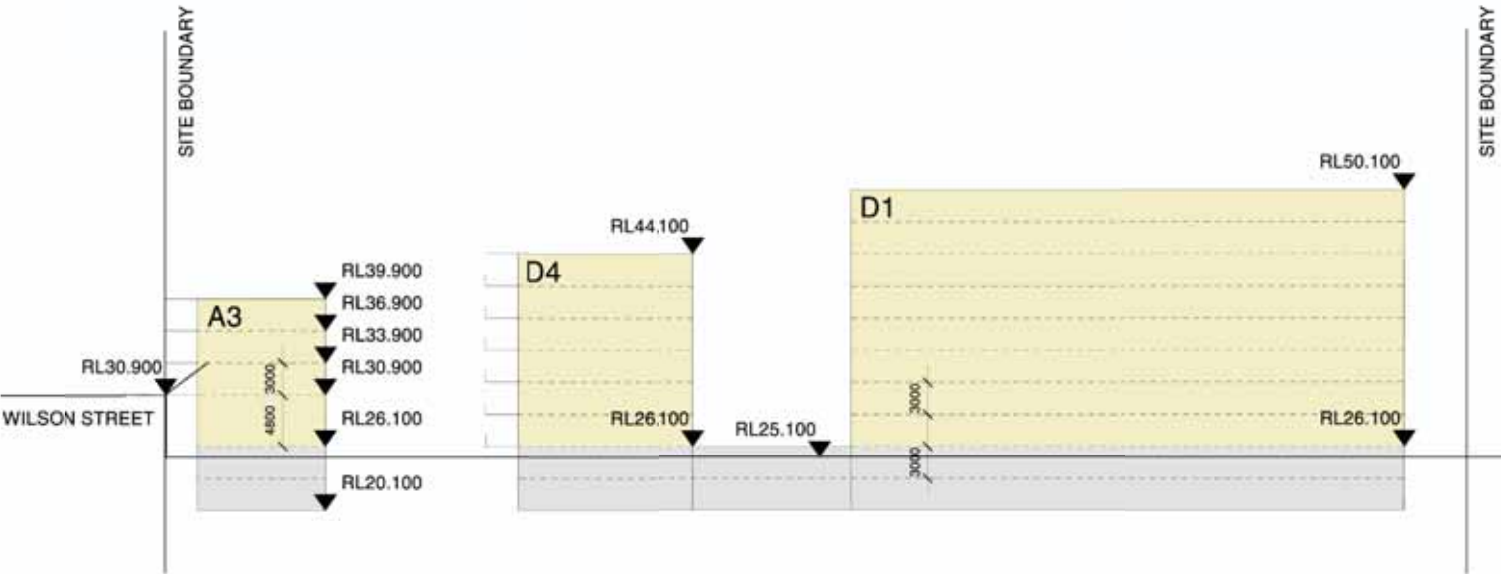
The diagram illustrates the proposed site layout plan. It shows the location of the proposed building footprint (F1) and the proposed building footprint (K1) relative to the site boundary and Wilson Street. The plan includes elevation markers (RL) and dimensions.

Key Features and Dimensions:

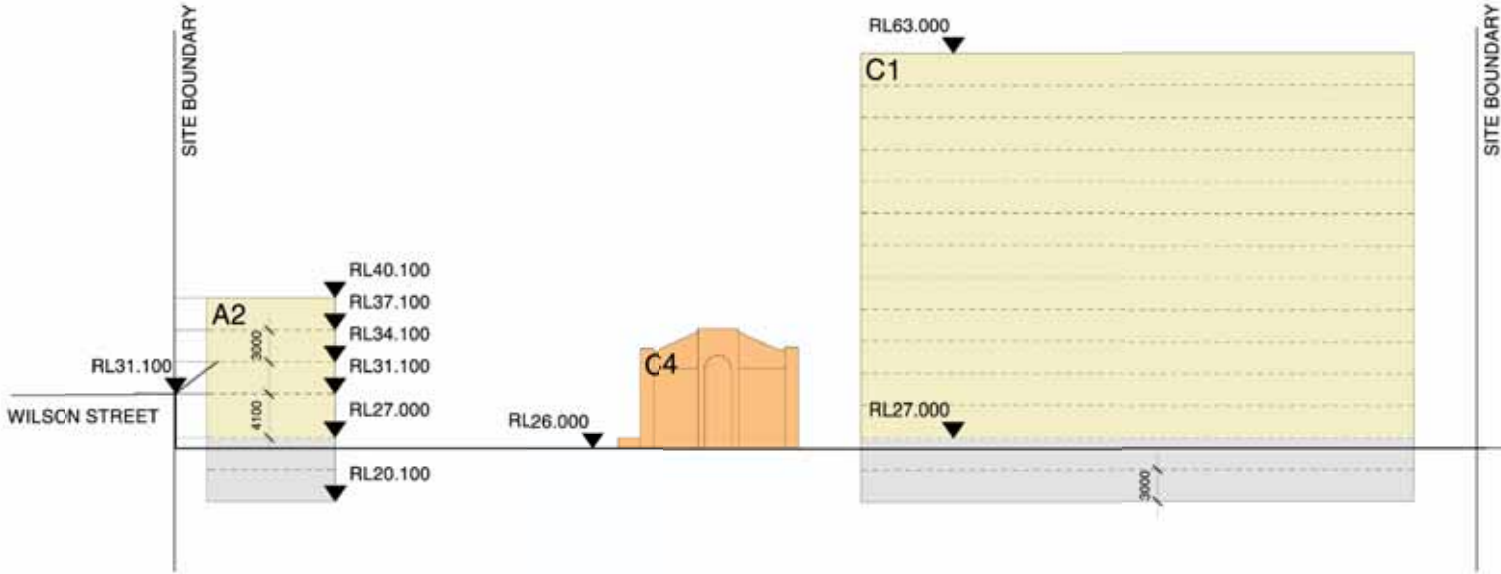
- Site Boundary:** Indicated by a vertical line on the left and right sides.
- Wilson Street:** Located at the bottom left, with an elevation of RL29.000.
- Proposed Building Footprint (F1):** A yellow-shaded area with a width of 3000 units. Its elevation ranges from RL20.000 to RL41.000.
- Proposed Building Footprint (K1):** A light blue-shaded area with a width of 3000 units. Its elevation ranges from RL25.250 to RL56.850.
- Elevation Markers (RL):**
 - RL29.000 (Wilson Street)
 - RL20.000
 - RL23.000
 - RL25.250
 - RL26.000
 - RL29.000
 - RL32.000
 - RL35.000
 - RL38.000
 - RL41.000
 - RL56.850
- Dimensions:**
 - 3000 (Width of F1)
 - 3000 (Width of K1)
 - 5000 (Length of K1)



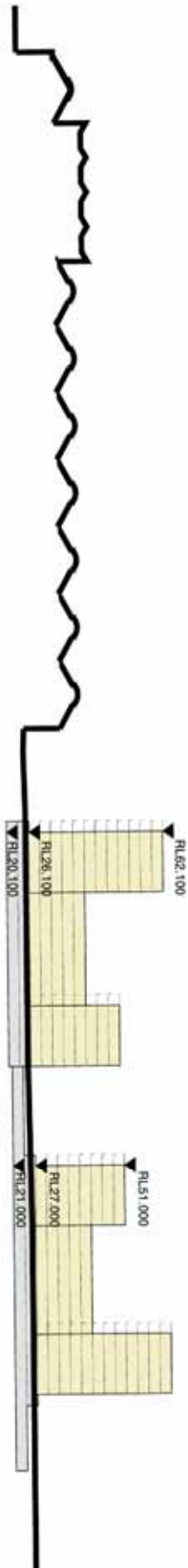
Section c



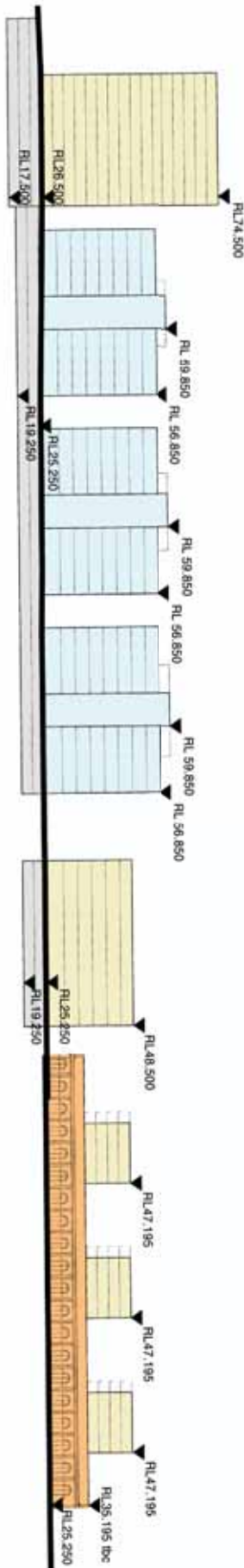
Section d



Longitudinal Sections
Scale 1:1250



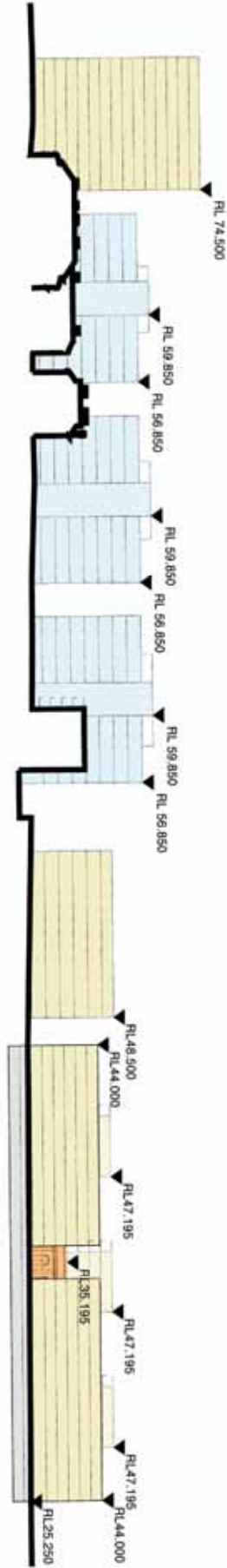
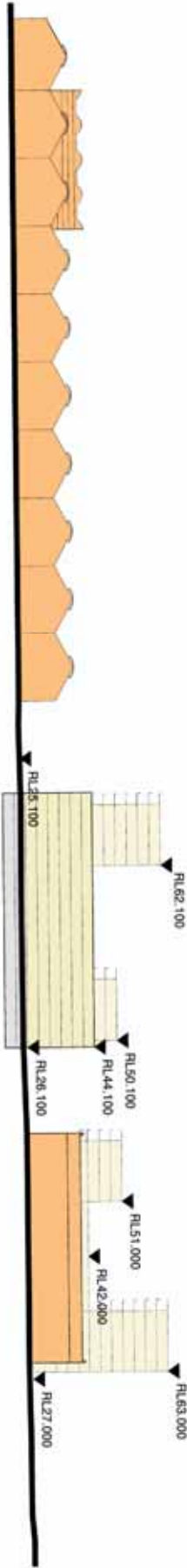
Section e



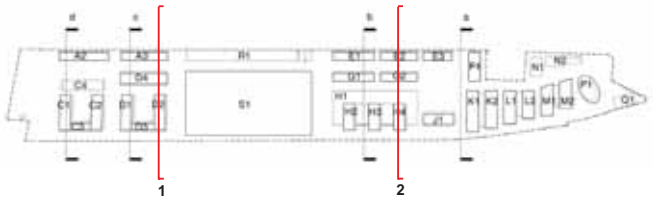
Longitudinal Sections
Scale 1:1250



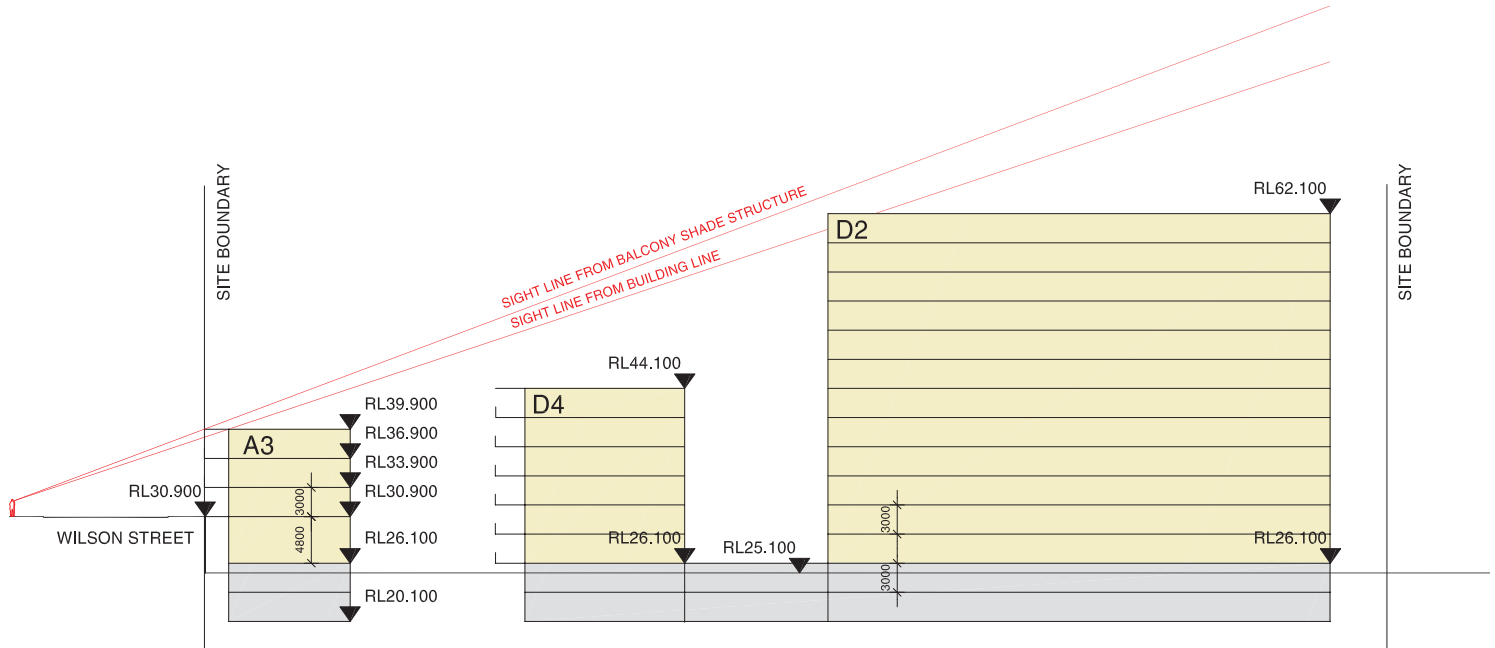
Section f



**Site Sections -
Sight Lines from Wilson Street
Scale NTS**



Section 1



Section 2

