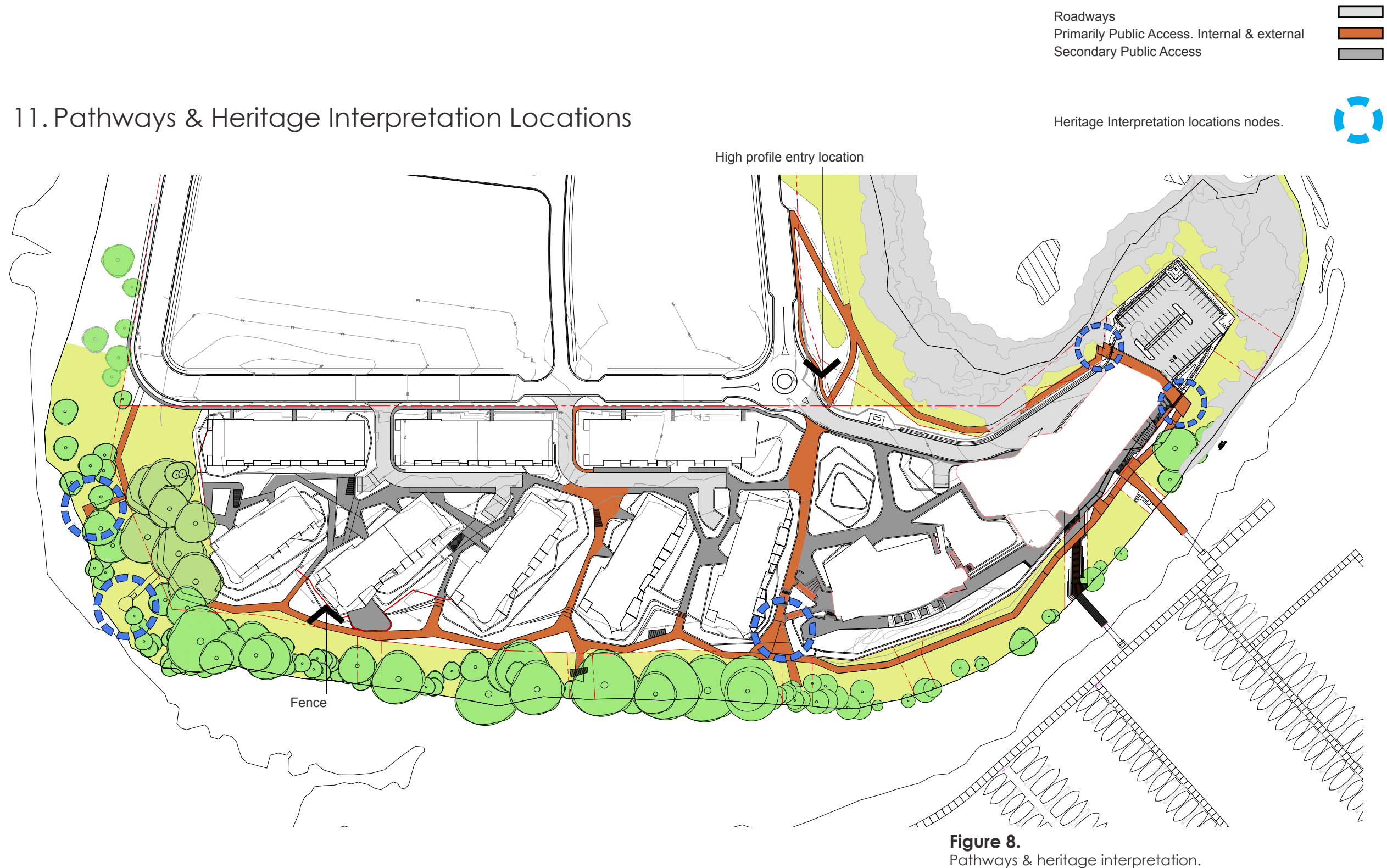


# 2 Landscape Principles

## 11. Pathways & Heritage Interpretation Locations



**Figure 8.**  
Pathways & heritage interpretation.

# 2 Landscape Principles

## 12. SOFT LANDSCAPE DESIGN

The soft landscaping design for the site needs to create a distinctive yet harmonious landscape style whilst addressing a number of design constraints.

The landscape theme consists of two plant palettes. The first planting palette is essentially native plants, typically endemic that would be used for the areas where the site interfaces with the adjoining protected foreshore areas. This will allow the development to blend into the existing landscape and minimise any visual disparity.

The second planting palette is a more stylised theme to create using distinctive 'architectural' plant forms that include natives but have a wider range of plant types. All the plants need to be suited to windy exposed conditions with some salt tolerance.

Due to the underground car parking planting in certain areas of site open space shall be located on the concrete car park roof slab. This will require raised planters to be constructed to enable soil depths to support landscape planting. This type of landscaping can be successful with attention to certain design parameters that will be employed.

Considerations include avoiding medium large sized trees, effective waterproofing and drainage, structural slab loading, sufficient depth of soil, irrigation and maintenance regimes and plant selections that are suited to hot dry

conditions to minimise irrigation requirements. The design proposes to collect roof water in tanks to be used for irrigation.

The design incorporates areas of deep soil, this is discussed further under the tourist and hospitality section below.

### MARINA & HOTEL

The Marina and Hotel are located to the northern site area forming a small peninsular of land surrounded by the remnant endemic vegetation communities. A vegetation management plan has been prepared by an Ecologist to rehabilitate parts of zoned foreshore vegetation as endangered species have been recorded in that area which will be extended as development progresses.

The internal site landscaping for this precinct is primarily intended to enhance the existing vegetation to the site perimeter with some internal site landscape such as around the carpark.

The site is currently cleared of vegetation and only very minor removal of some sapling regrowth is required. Public access across the foreshore land to access the marina berths has been done so that separate public access is not precluded.

The planting species shall be based on the endemic species of the adjoining foreshore land. Shade tree planting shall be provided in the carpark and bioswale areas constructed to manage stormwater quality on site.

To provide a clear public access way around this northern site area it has been decided to propose a separate shared pathway to the west of the site access road as well as the internal pathway.

The separate pathway provides a clear easy access way for the public and visitors to walk around the site without feeling they are on private land. Where existing trees need to be protected or near salt marsh the pathway shall be a raised 'eco-deck style platform'. Additionally a shared public access corridor has been provided between the marina building and the carpark to allow continuation of access to the eastern foreshore without the need to circulate around the carpark or impact on the endangered vegetation.