

- KEY**      **Fig 8 - Concept Masterplan**
- Sub-arterial Road
  - Main Collector Road
  - Standard Collector Road
  - Local Road
  - Conservation Area
  - Neighbourhood Centre
  - Electricity Zone Substation
  - Reservoir
  - Drainage Detention Basin/Wetland
  - ▨ Riparian Corridor

Proposed distribution of uses

▨ Proposed boundary adjustment

Central Western Sydney Employment Lands: Wallgrove Rd, Eastern Creek

**Fig 4 - SEPP 59- Eastern Creek Precinct Plan- Stage 3 - Overlay of Proposed Concept Plan**

KEY Fig 9 - General Services Plan

- Eastern Sewer Sub-catchment  
Drains to Quakers Hill STP  
via Eastern Creek Carrier
- Northern Sewer Sub-catchment  
Drains to Quakers Hill STP  
via Link under M4
- Western Sewer Sub-catchment  
Drains to St Marys STP  
via Ropes Creek Carrier
- Elevated and Surface Reservoirs
- Electricity Zone Substations

Proposed distribution of uses

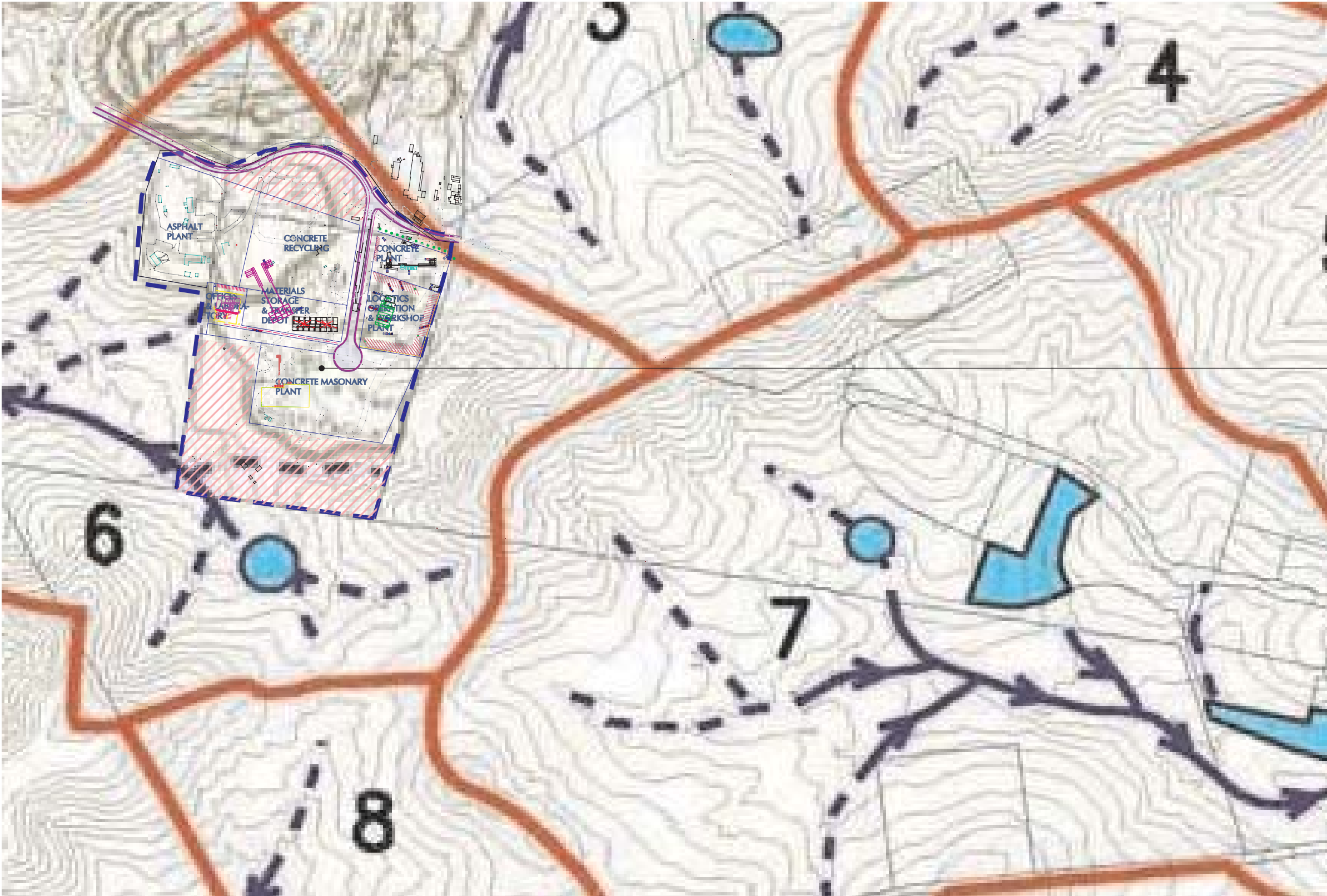
Proposed boundary adjustment

**KEY Fig 10 - Existing Drainage Conditions**

- Catchment Boundaries
- 1 Quarry Catchment
- 2 Quarry North Catchment
- 3 Upper Angus Creek Catchment
- 4 Minchinbury Catchment
- 5 Wonderland Catchment
- 6 Ropes Creek Tributary Catchment
- 7 Eastern Creek Tributary Catchment
- 8 Substation Catchment
- 9 Reedy Creek Catchment
- Defined Natural Form Creek
- - - Overland Flow Path
- Existing Dam

Proposed distribution of uses

Proposed boundary adjustment



Central Western Sydney Employment Lands: Wallgrove Rd, Eastern Creek

**Fig 6 - Existing Drainage Conditions - Overlay of Proposed Concept Plan**



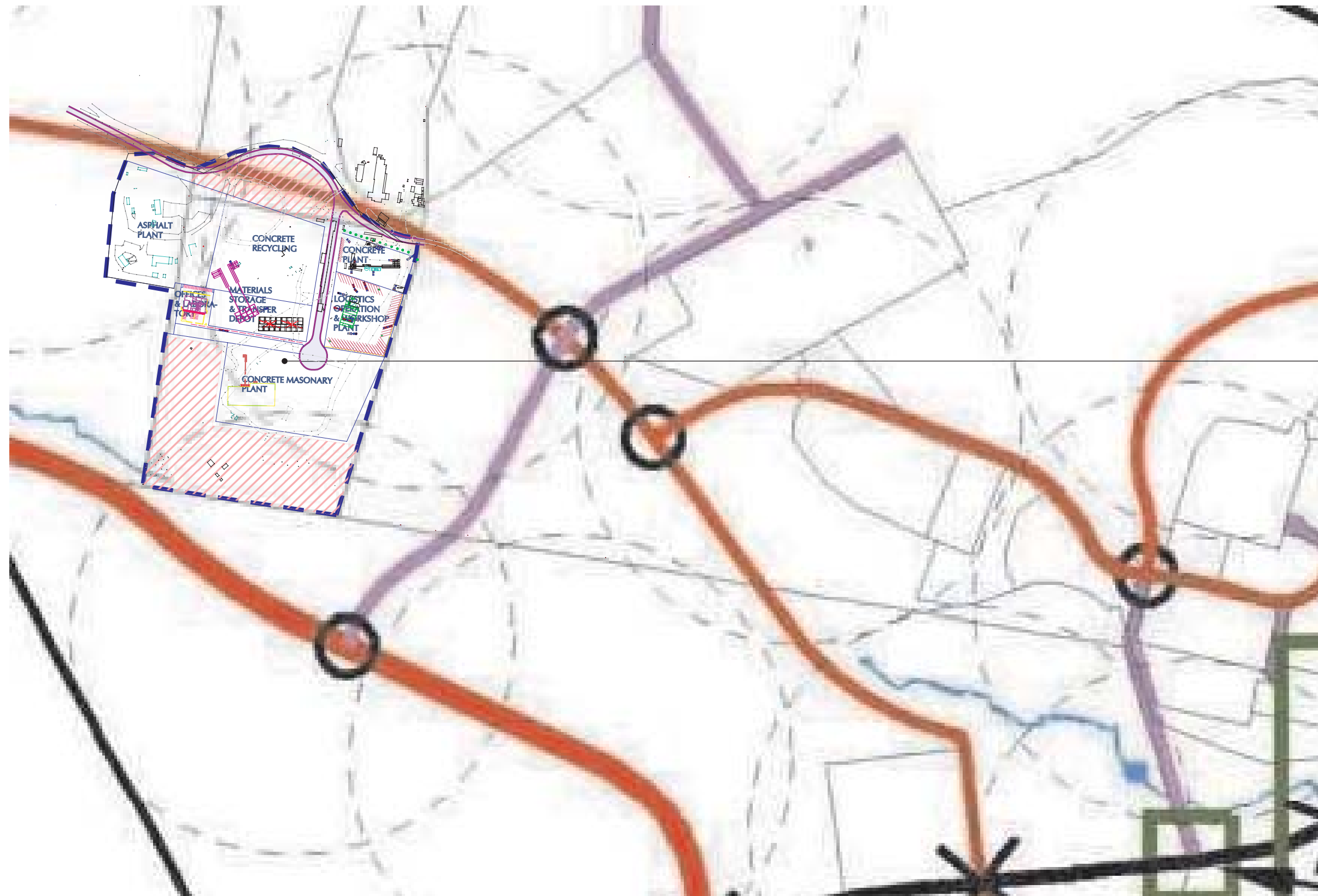
KEY Fig 11 - Stormwater  
Management Plan

- Drainage Detention Basin/Wetland
- Riparian Corridor

Proposed distribution of uses

Proposed boundary  
adjustment





SEPP 59 - Eastern Creek Precinct Plan (Stage 3)  
Dated: 14 December 2005

KEY Fig 30 - Local Road Pattern

- Sub-arterial Road
- Local Road
- Main Collector Road
- Standard Collector Road
- Traffic Signals
- Roundabout
- 400m Coverage from Public Transport

Proposed distribution of uses

Proposed boundary adjustment

Central Western Sydney Employment Lands: Wallgrove Rd, Eastern Creek

**Fig 8 - Local Road Pattern - Overlay of Proposed Concept Plan**

0 250 m

prepared by **planning workshop australia**  
2051067\graphics\ds-fig CP 2.cdr

**Appendix 9**  
**Fig 5**

KEY Fig 14 - Noise Emission Zones

- Zone 1
- Zone 2
- Zone 3
- Zone 4
- Zone 5
- Zone 6
- Reservoir

Proposed distribution of uses

Proposed boundary adjustment

Fig 9 - Noise Emission Zones - Overlay of Proposed Concept Plan

