

Visy Tumut Mill Buildings & Storage s75W Modification

SUPPLEMENTARY INFORMATION AND RESPONSE TO SUBMISSIONS

September 2015

Background

Visy has applied for a modification under s.75W of its Project Approval (PA06_0159) 'Tumut Mill Expansion 2007' at its pulp and paper manufacturing facility located west of Tumut, NSW.

This Supplementary Information and Response to Submissions provides further information and comments on the EPA's submission, as requested by the Department.

Response to EPA comments

In its submission dated 7 September 2015 the EPA sought assurances on two matters, viz:

1) "We understand from the information provided in the supporting environmental assessment that, despite there being a significant increase in chemical storage at the premises associated with the coating batch plant (coating kitchen building), there will be no additional air emissions or discharge points resulting from the proposed modification. Should emissions from the proposed modification occur they must meet the relevant limits outlined within the Protection of the Environment Operations (Clean Air) Regulation 2010..."

Visy confirms that there will be no additional air emissions or discharge points resulting from the proposed modification.

2) *"In regard to noise emissions, the proposed modification must meet existing noise limits specified in the EPL and ensure that during construction, noise is managed in accordance with the NSW Interim Construction Noise Guideline. A copy of this guideline can be found online at — <http://www.epa.nsw.gov.au/resources/noise/09265cng.pdf>..."*

Visy confirms that the components of the proposed modification, including the White Pulp Storage Facility, Coating Kitchen Building and Storage Sheds will meet the existing noise limits specified in Environment Protection Licence 10232. Visy also commits to ensure that during construction, noise will be managed in accordance with the NSW Interim Construction Noise Guideline and the site's Construction Noise Management Plan.

Preliminary drawings for the three buildings

The Department has requested indicative floor plans and elevations of the proposed building structures. These are provided in the following attached pages, including an extract of the overall site layout plan (Figure 2 in the EA) for context.

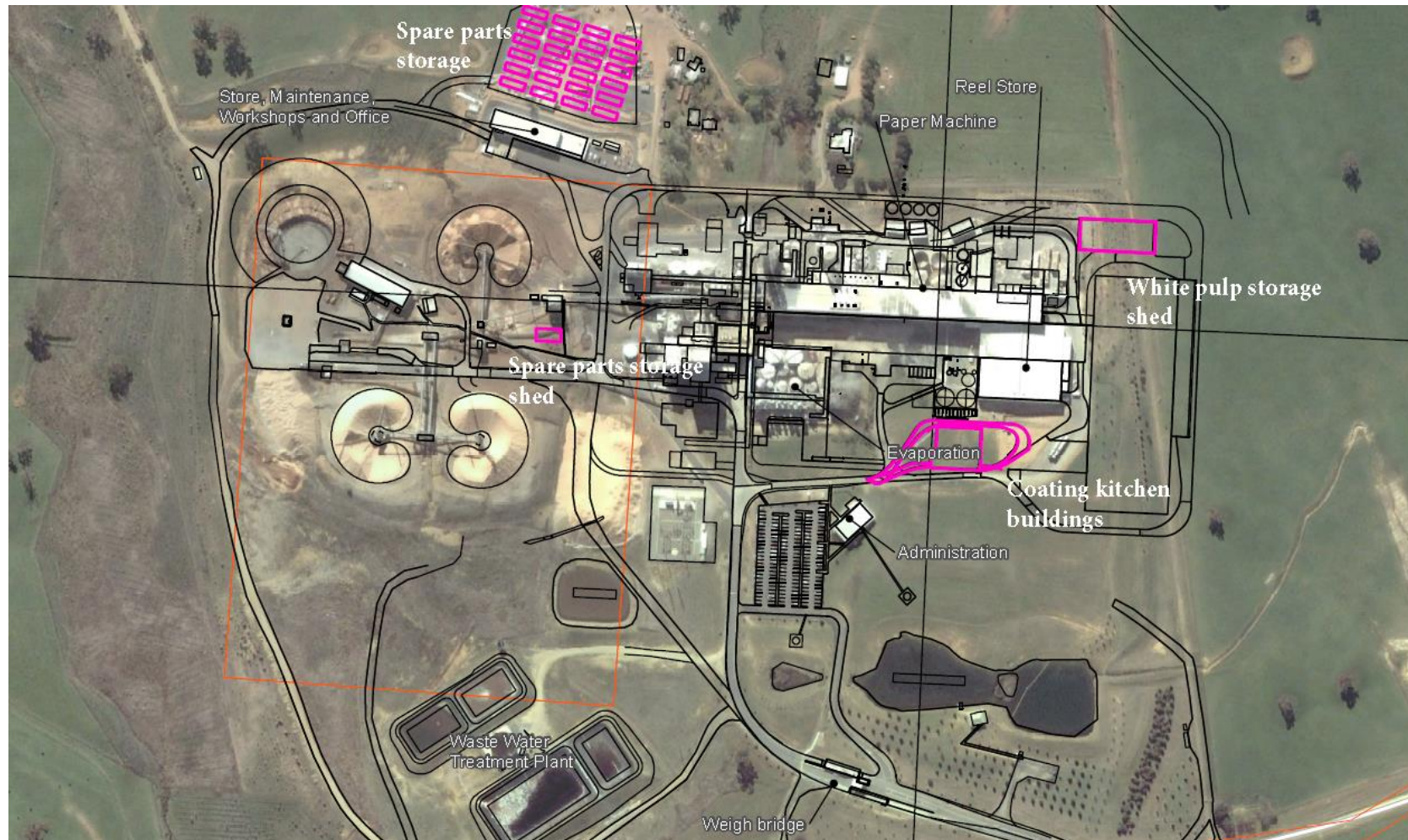
Please note that, with respect to the Spare Parts Storage shed modules, the final exact module size is still to be confirmed. Regarding this component, in the EA Visy indicated each module would be approximately 12m x 3m x 6m high, however the drawing now shows a slight variation of dimensions to 12m x 6m x 4m high, which is now the preferred configuration.

Contact

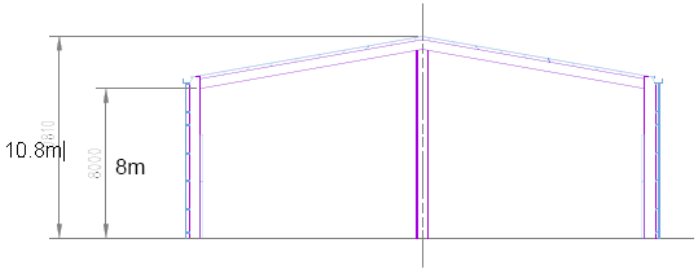
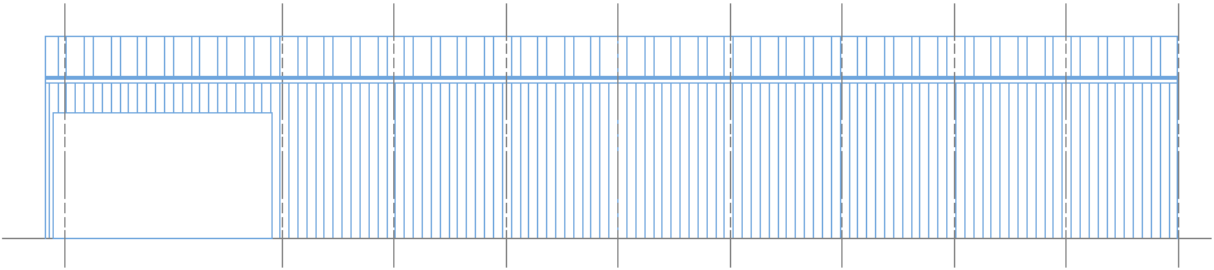
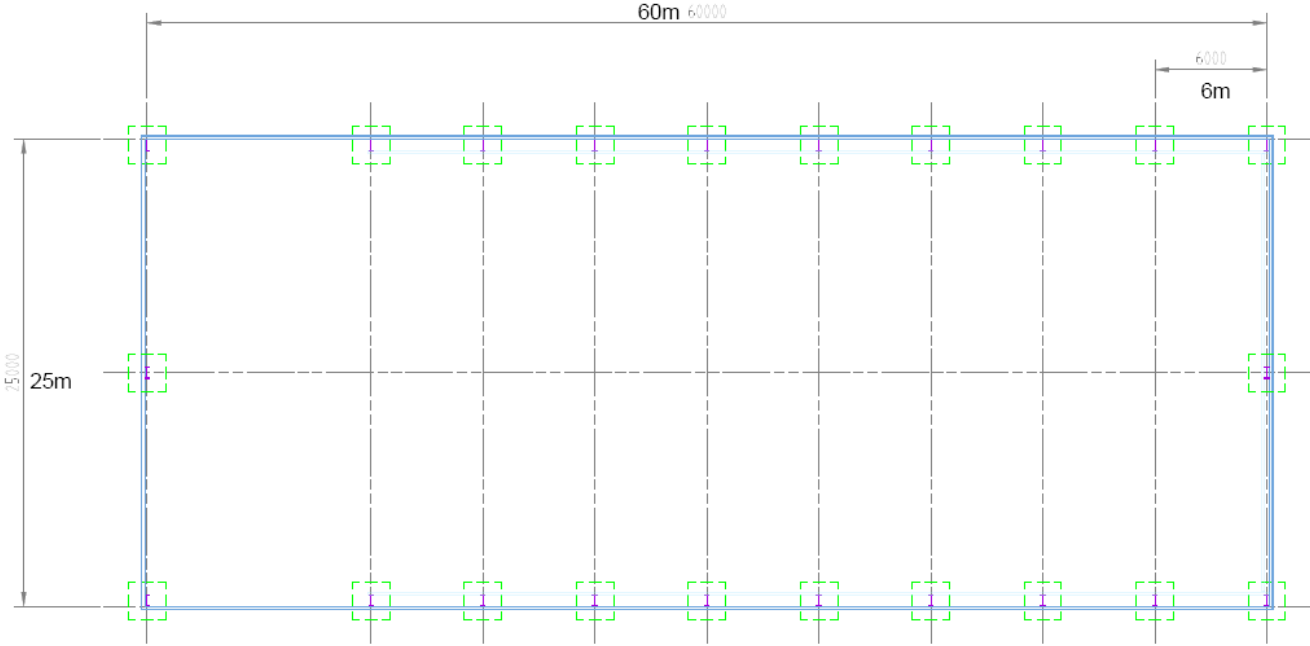
Bill Hurditch M: 0403067776
E: bill@fifthestate.com.au

... / Drawings

Detail from EA Figure 2

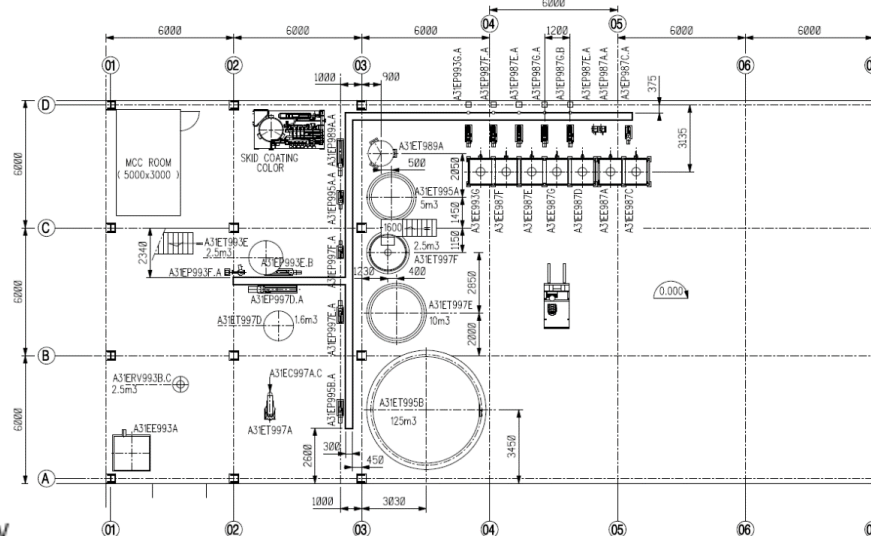


White pulp storage Shed - Preliminary Plans



Technical drawing of the A3/E1997B R building section, showing a cross-section with various rooms and equipment. The drawing includes dimensions and labels for different parts of the building, such as the main structure, the central core, and the surrounding areas. Key features include a large central hall, a staircase, and various rooms with specific equipment. The drawing is labeled with 'A3/E1997B R' and 'FUTUR'.

TOP VIEW



Spare Parts Storage Module - Preliminary Plans

