



P R E F E R R E D P R O J E C T R E P O R T

montefiore aged care facility

Sir Moses Montefiore Jewish Home
100 - 120 King Street & 30 - 36 Dangar Street, Randwick

SEPTEMBER 2015

JACKSON TEECE
Urban Design. Architecture. Interior Design

Preferred Project Report

TABLE OF CONTENTS

Section 1 Proposed

- Site analysis plan
- RL Height Diagram
- Staging Diagram
- Floor-by-floor proposed with colour codes by use
- Elevations
- Site Setbacks
- Sections
- Photomontages / detailed colour elevations / Finishes Board
- Shadow diagrams

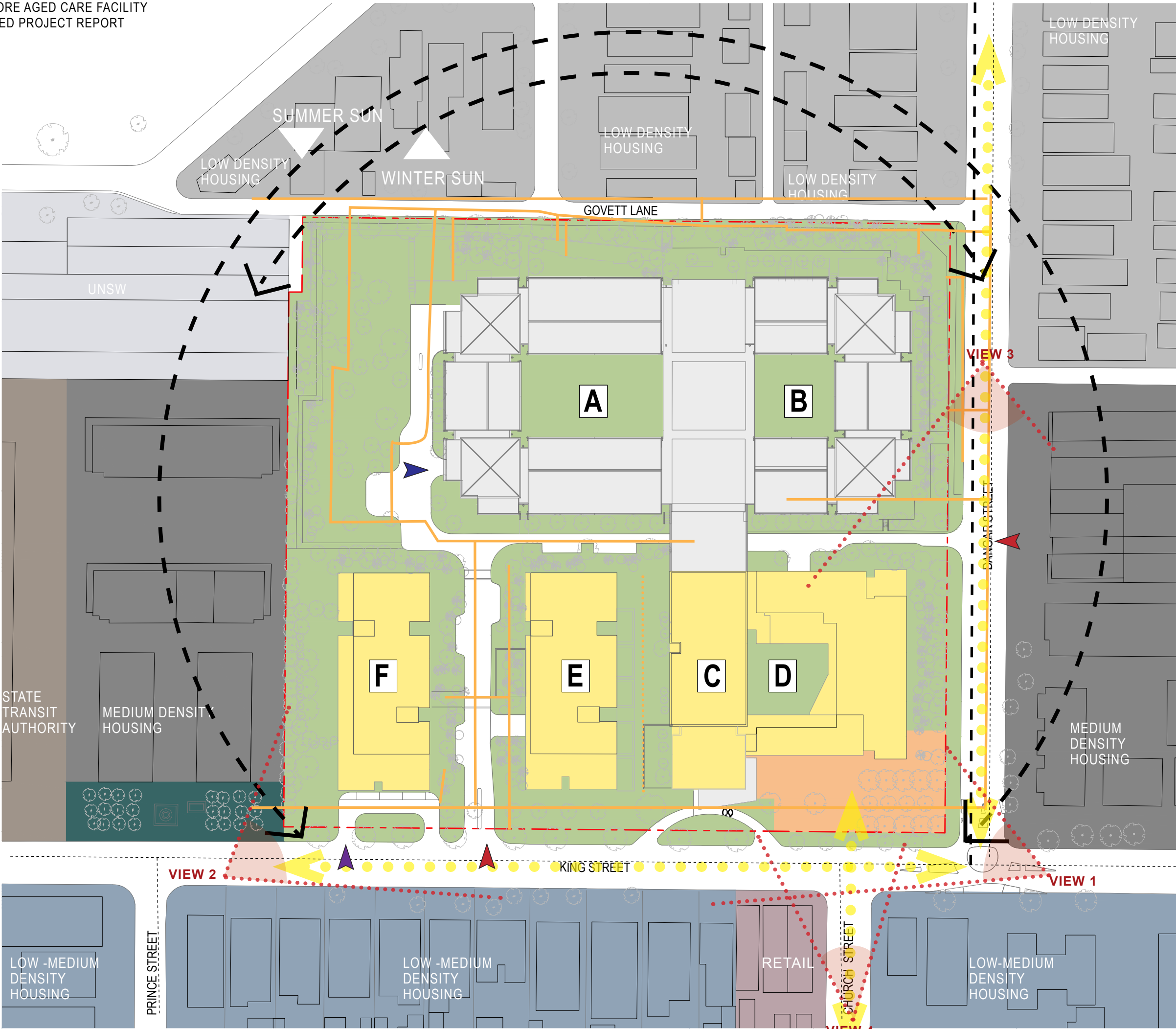
Section 2 GFA floor plans / Area schedule

- GFA Floor plans / area schedule



propos

SECTION 1 PREFERRED PROJECT REPORT



LEGEND

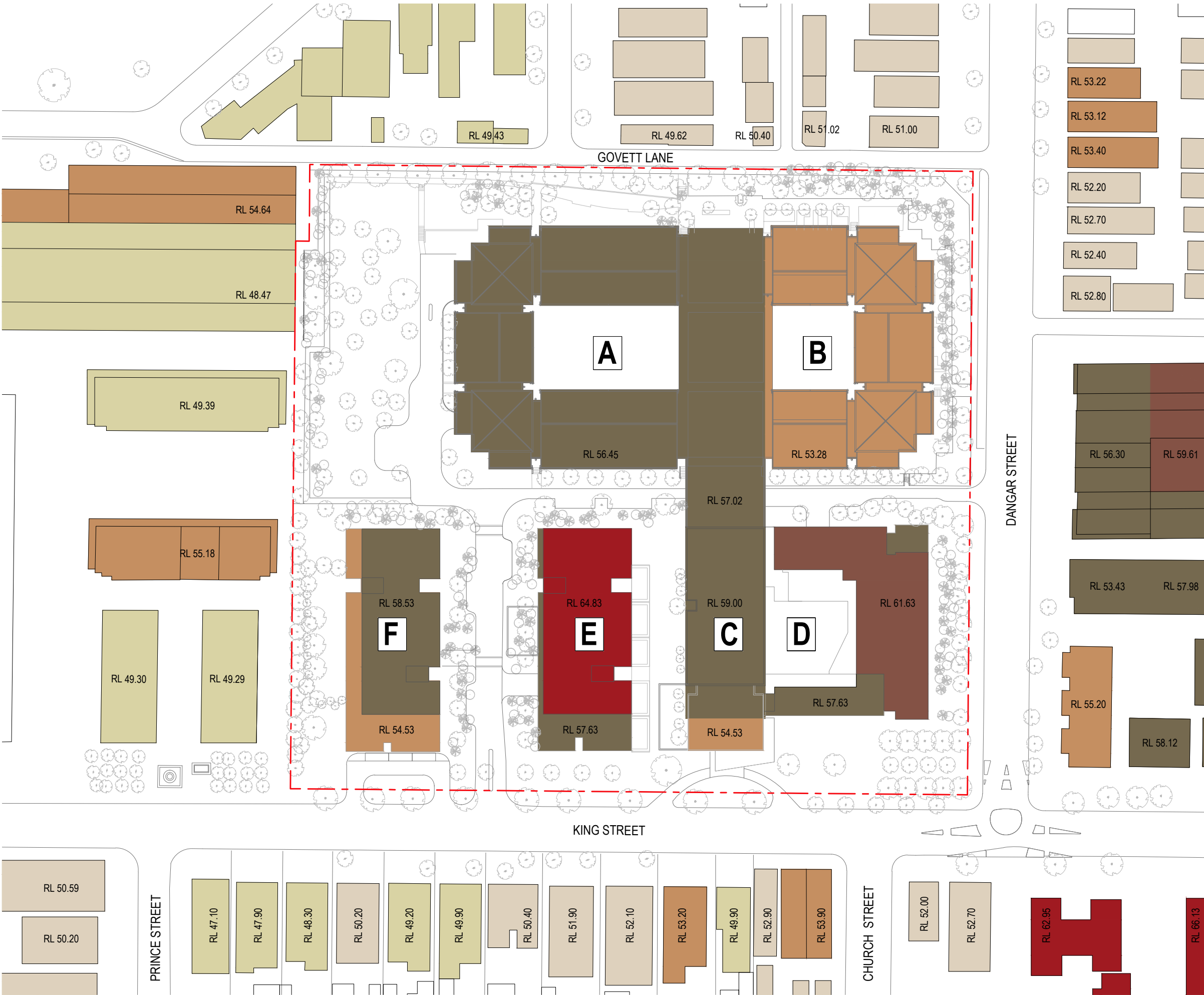
- EXISTING AGED CARE FACILITY
- PRPOSED AGED CARE FACILITY
- LOW DENSITY HOUSING
- LOW-MEDIUM DENSITY HOUSING
- MEDIUM DENSITY HOUSING
- PRIVATE OPEN SPACE
- PUBLIC OPEN SPACE
- STATE TRANSIT AUTHORITY
- UNSW
- RETAIL / COMMERCIAL
- PEDESTRIAN PATHS
- HERITAGE ITEM
- ON-STREET CYCLE PATH
- VEHICLE ENTRANCE
- CHILD CARE ENTRANCE
- SELF CARE APARTMENT ENTRANCE
- SERVICE ENTRANCE
- WELLNESS CENTRE ENTRANCE
- NEIGHBOURHOOD ROADS
- VIEW CORRIDORS
- BUILDINGS
- VIEW 3 SELECTED PHOTOMONTAGE VIEWS
- DROP OFF POINT



0 10 50metres

SCALE 1:1000

SITE PLAN
JACKSON TEEGE
Nominated Architect Ian Brodie (4275)



LEGEND

- RL 62-65
- RL 59-62
- RL 56-59
- RL 53-56
- RL 50-53
- RL 47-50
- RL 38-46



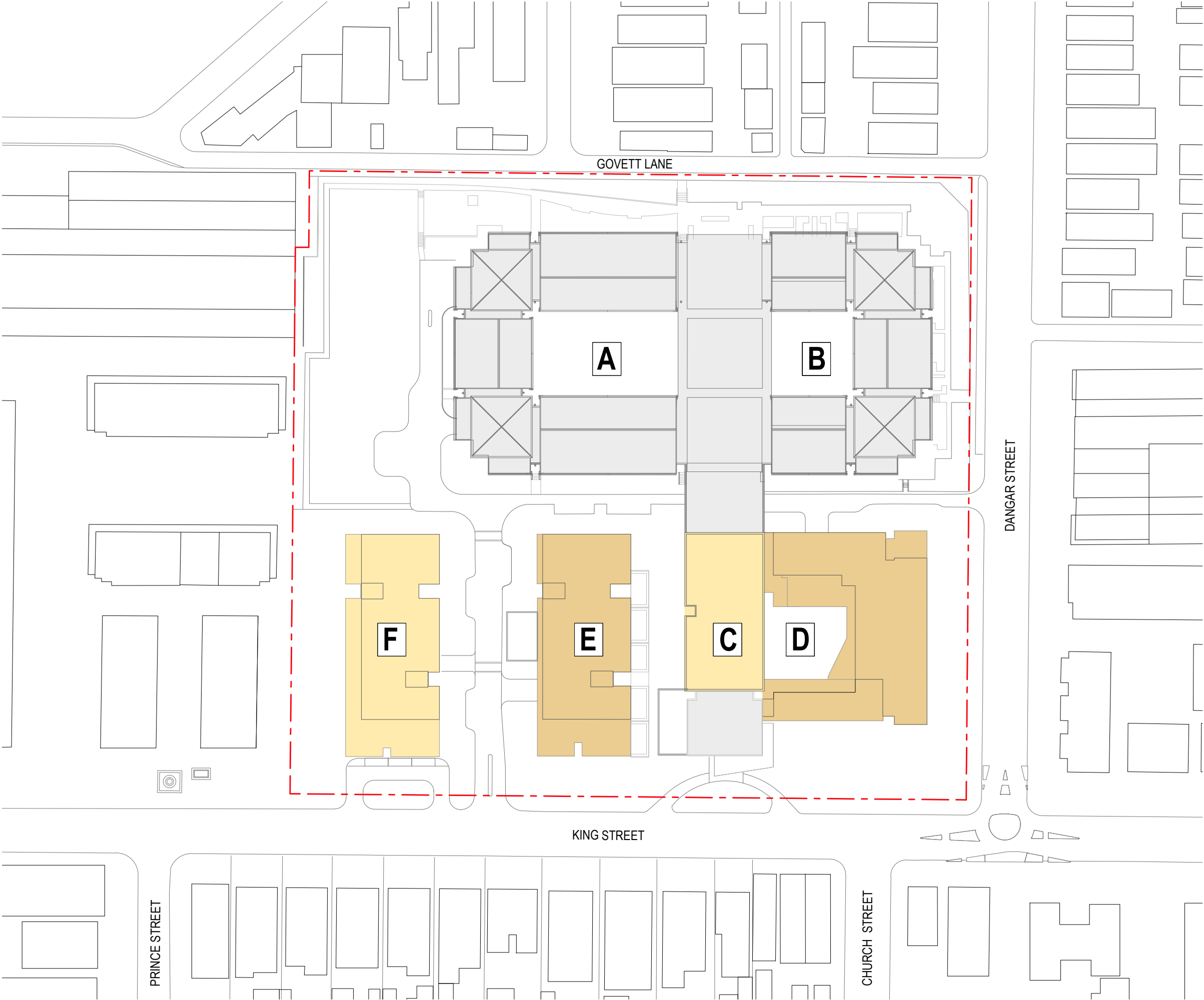
0 10 50metres

SCALE 1:1000

RL HEIGHT DIAGRAM

JACKSON TEECE

Nominated Architect Ian Brodie (4275)



LEGEND

STAGE 1

STAGE 2

EXISTING AGED CARE FACILITY

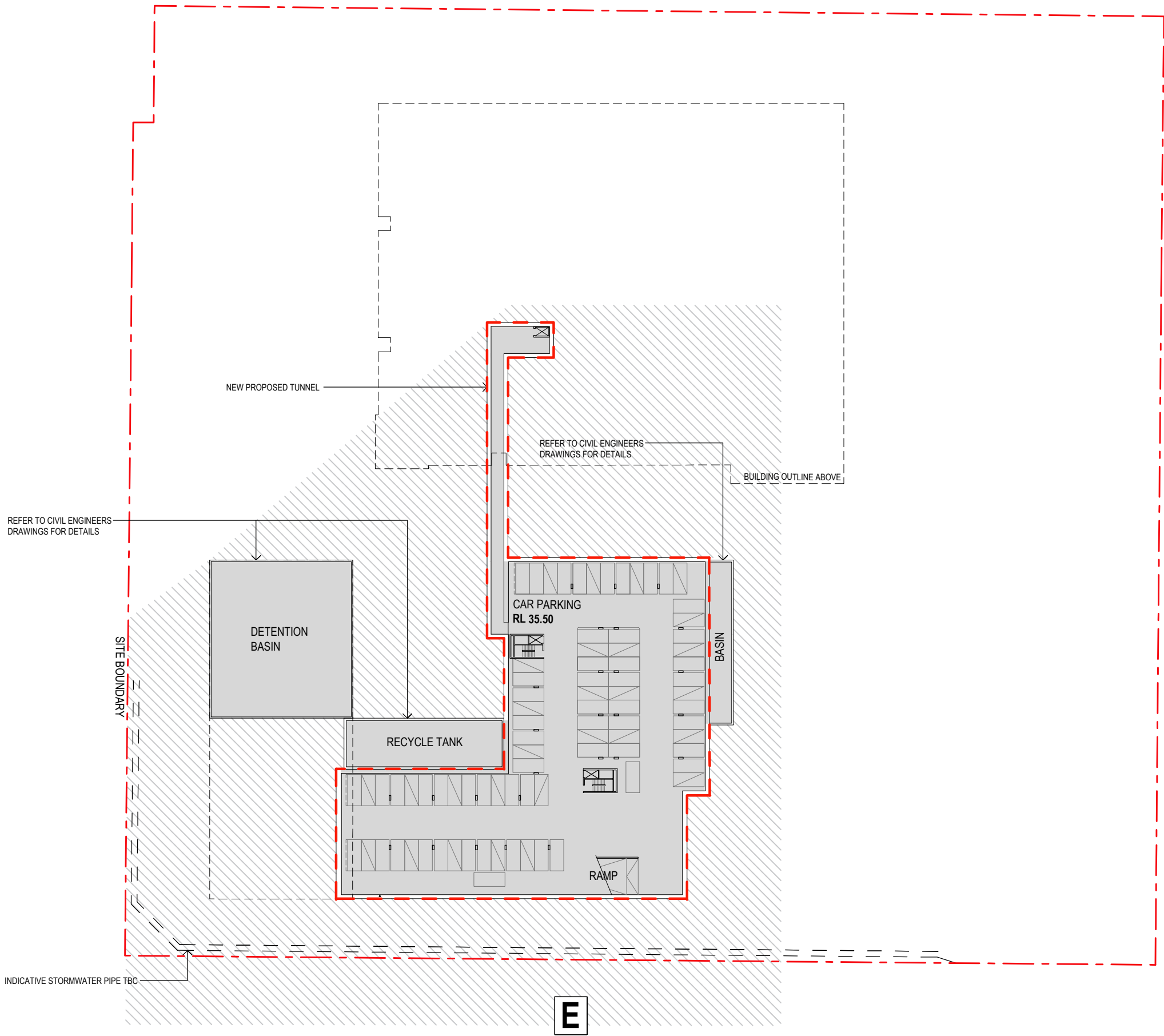
01050metres

SCALE1:1000

STAGING PLAN

JACKSON TEECE

Nominated Architect Ian Brodie (4275)



LEGEND

- RESIDENTIAL AGED CARE
- RESIDENTIAL HEALTH/WELLBEING
- ADULT DAYCARE
- CHILDCARE
- RETAIL / COMMERCIAL
- FOYER / ADMINISTRATION
- STAFF FACILITIES
- SELF-CARE APARTMENTS
- EXISTING AGED CARE FACILITY
- CARPARK / PLANT / STORE ROOM
- PUBLIC OPEN SPACE
- RESIDENTIAL AGED CARE RE-USE OF EXISTING BUILDING
- RESIDENTIAL HEALTH / WELL-BEING RE-USE OF EXISTING BUILDING
- ADULT DAYCARE RE-USE OF EXISTING BUILDING
- SKYLIGHT
- APPROVED SCHEME ENVELOPE
- BUILDING FLOOR SPACE ENVELOPE SOUGHT FOR APPROVAL



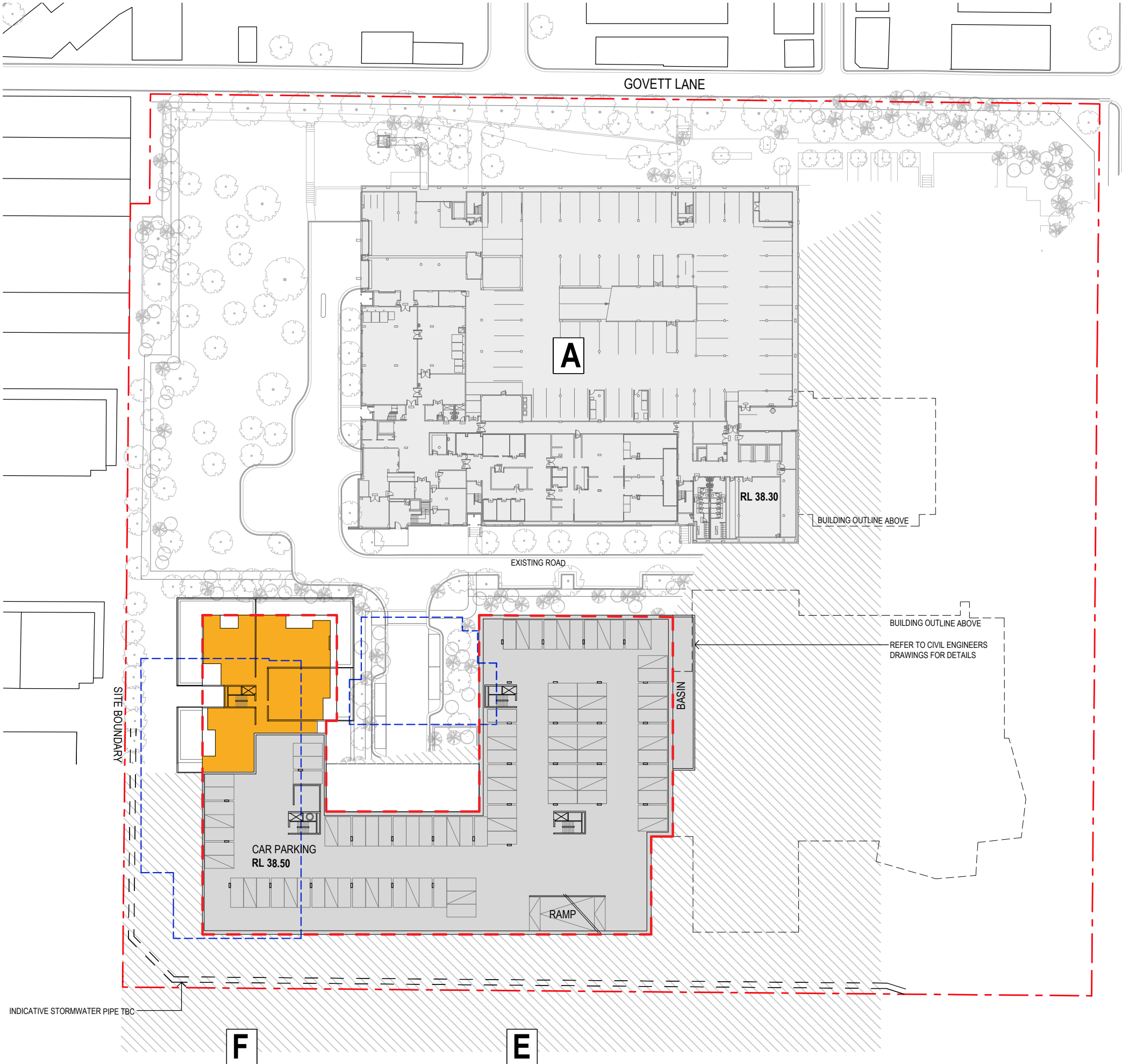
0 10 20 30metres
SCALE 1:750

BASEMENT LEVEL 2 CARPARK

JACKSON TEECE

Nominated Architect Ian Brodie (4275)

MONTEFIORE AGED CARE FACILITY
PREFERRED PROJECT REPORT



LEGEND

- RESIDENTIAL AGED CARE
- RESIDENTIAL HEALTH/WEELLBEING
- ADULT DAYCARE
- CHILDCARE
- RETAIL / COMMERCIAL
- FOYER / ADMINISTRATION
- STAFF FACILITIES
- SELF-CARE APARTMENTS
- EXISTING AGED CARE FACILITY
- CARPARK / PLANT / STORE ROOM
- PUBLIC OPEN SPACE
- RESIDENTIAL AGED CARE RE-USE OF EXISTING BUILDING
- RESIDENTIAL HEALTH / WELL-BEING RE-USE OF EXISTING BUILDING
- ADULT DAYCARE RE-USE OF EXISTING BUILDING
- SKYLIGHT
- APPROVED SCHEME ENVELOPE
- BUILDING FLOOR SPACE ENVELOPE SOUGHT FOR APPROVAL



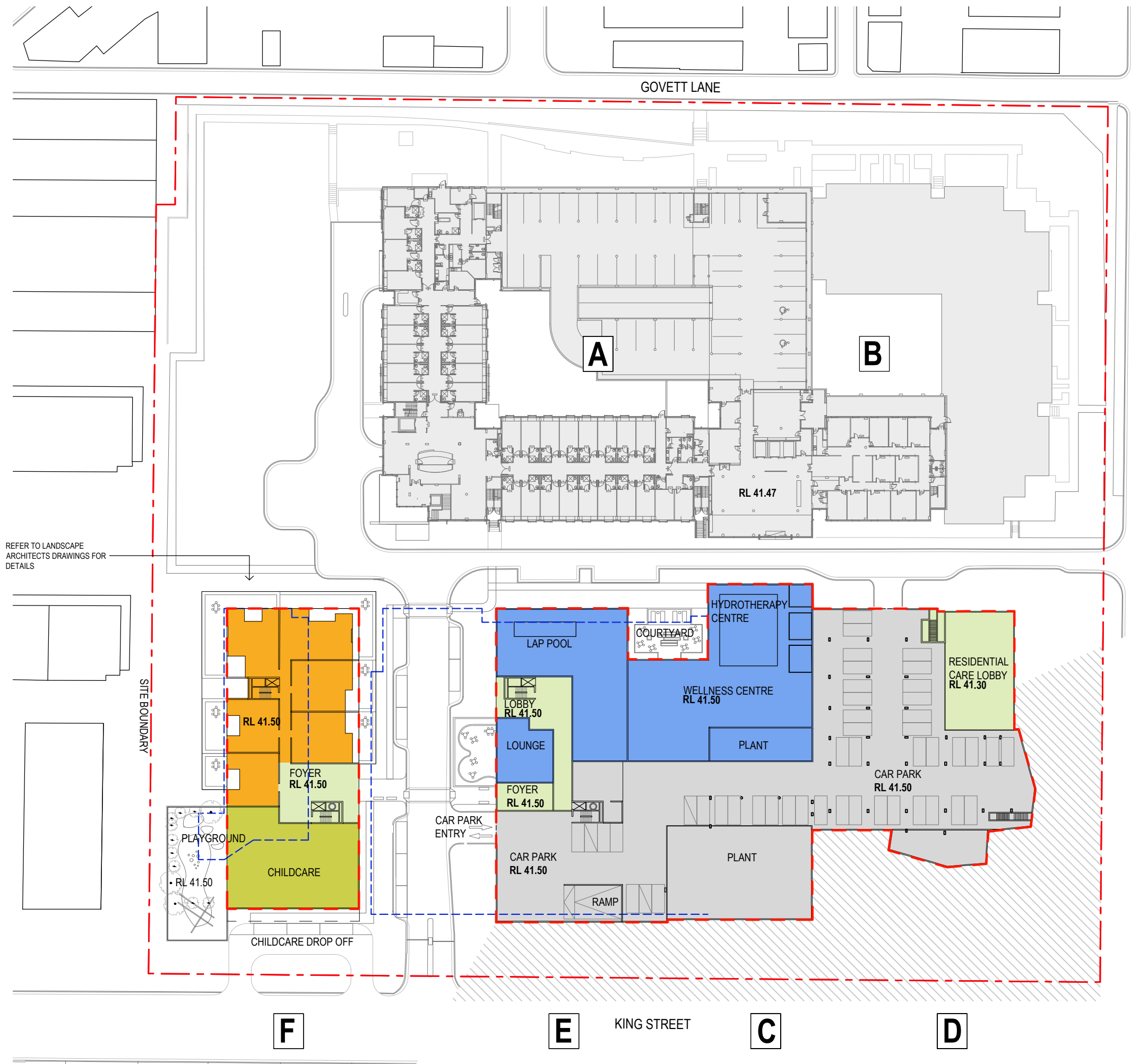
0 10 20 30metres
SCALE 1:750

BASEMENT LEVEL 1 CARPARK

JACKSON TEECE

Nominated Architect Ian Brodie (4273)

MONTEFIORE AGED CARE FACILITY
PREFERRED PROJECT REPORT



0 10 20 30metres

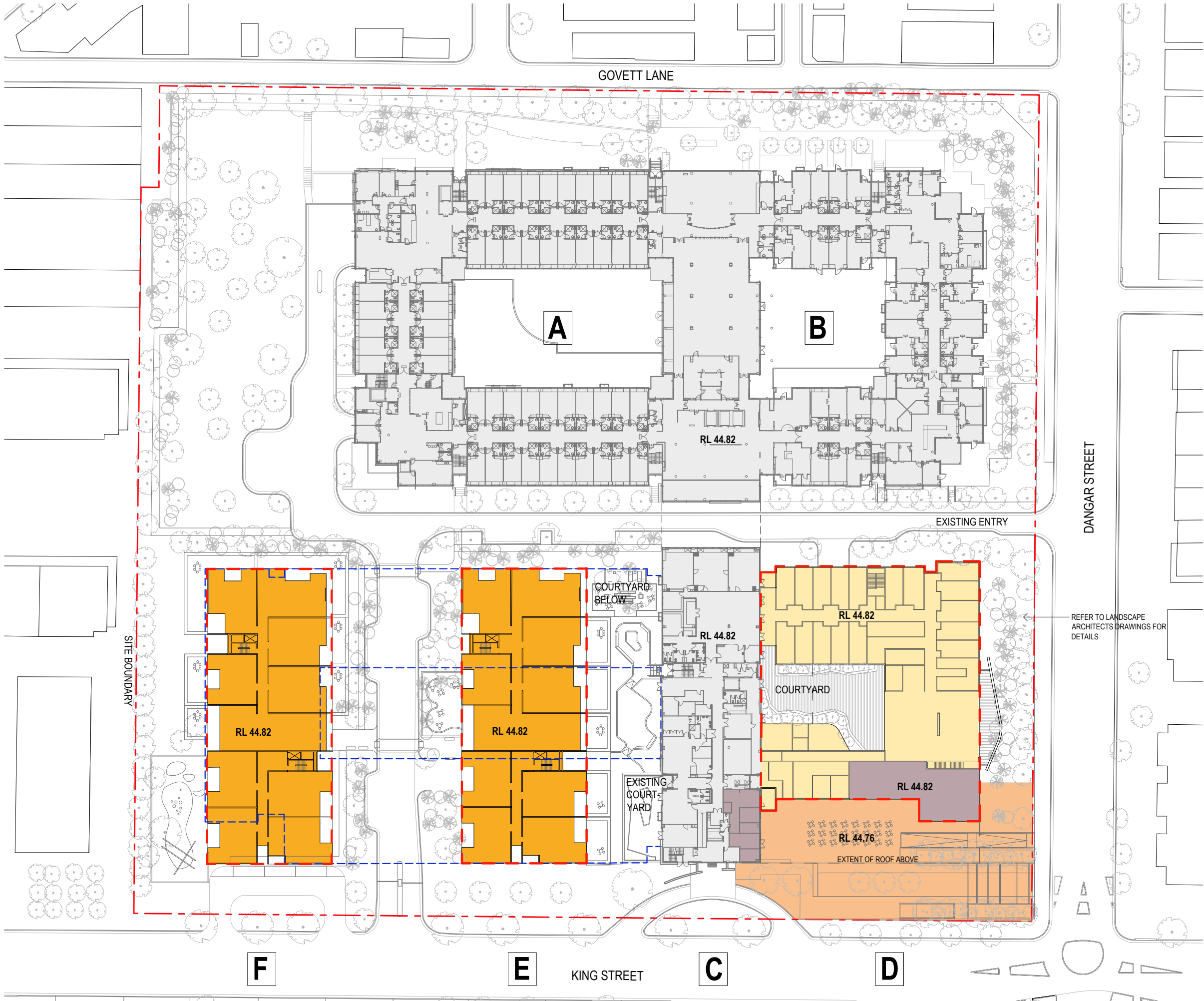
SCALE 1:750

LOWER GROUND LEVEL FLOOR PLAN

JACKSON TEECE

Nominated Architect Ian Brodie (4275)

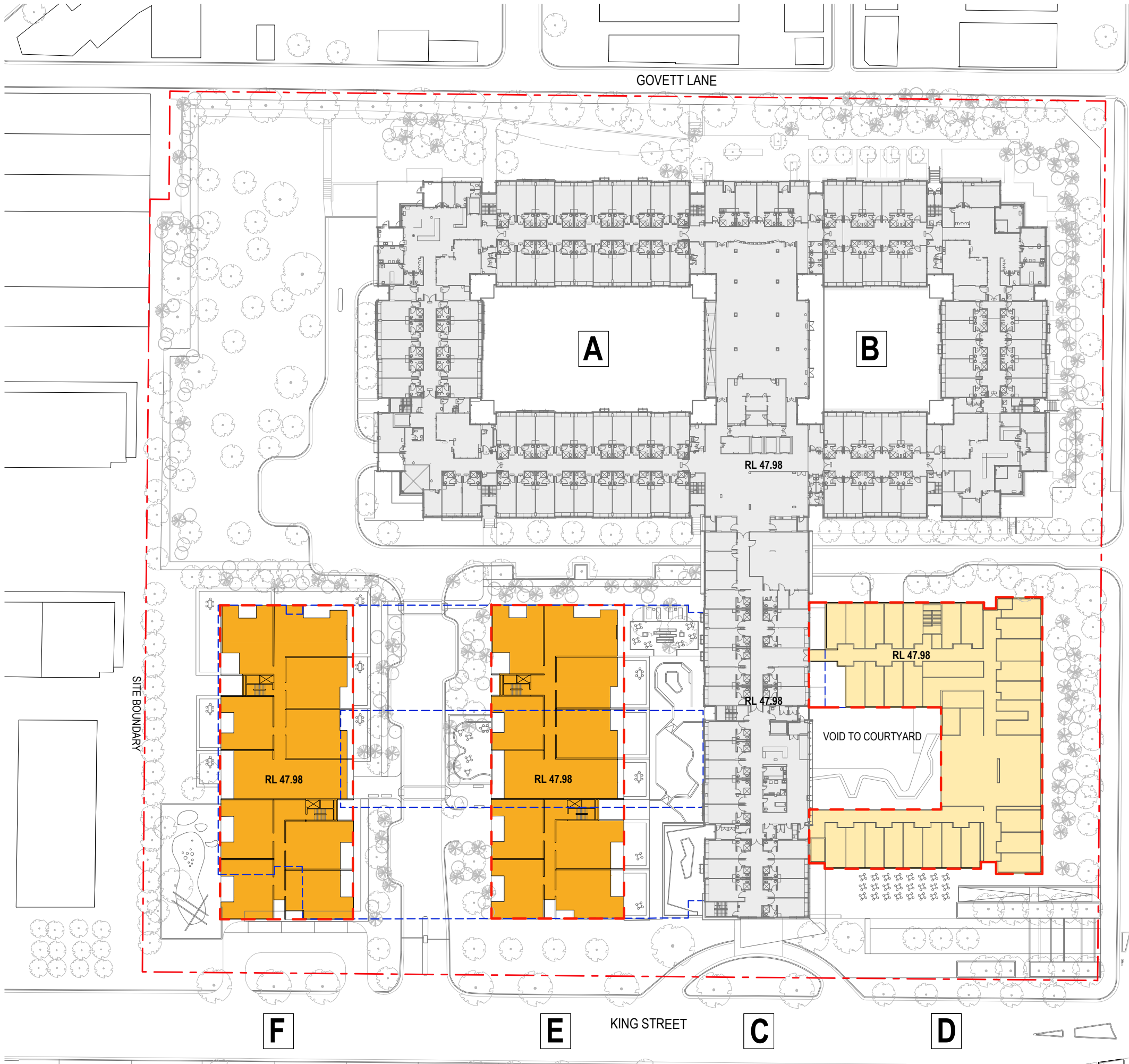
MONTEFIORE AGED CARE FACILITY
PREFERRED PROJECT REPORT



LEGEND

- RESIDENTIAL AGED CARE
- RESIDENTIAL HEALTH/ WELLBEING
- ADULT DAYCARE
- CHILDCARE
- RETAIL / COMMERCIAL
- FOYER / ADMINISTRATION
- STAFF FACILITIES
- SELF-CARE APARTMENTS
- EXISTING AGED CARE FACILITY
- CARPARK / PLANT / STORE ROOM
- PUBLIC OPEN SPACE
- RESIDENTIAL AGED CARE RE-USE OF EXISTING BUILDING
- RESIDENTIAL HEALTH / WELL-BEING RE-USE OF EXISTING BUILDING
- ADULT DAYCARE RE-USE OF EXISTING BUILDING
- SKYLIGHT
- APPROVED SCHEME ENVELOPE
- BUILDING FLOOR SPACE ENVELOPE SOUGHT FOR APPROVAL

MONTEFIORE AGED CARE FACILITY
PREFERRED PROJECT REPORT



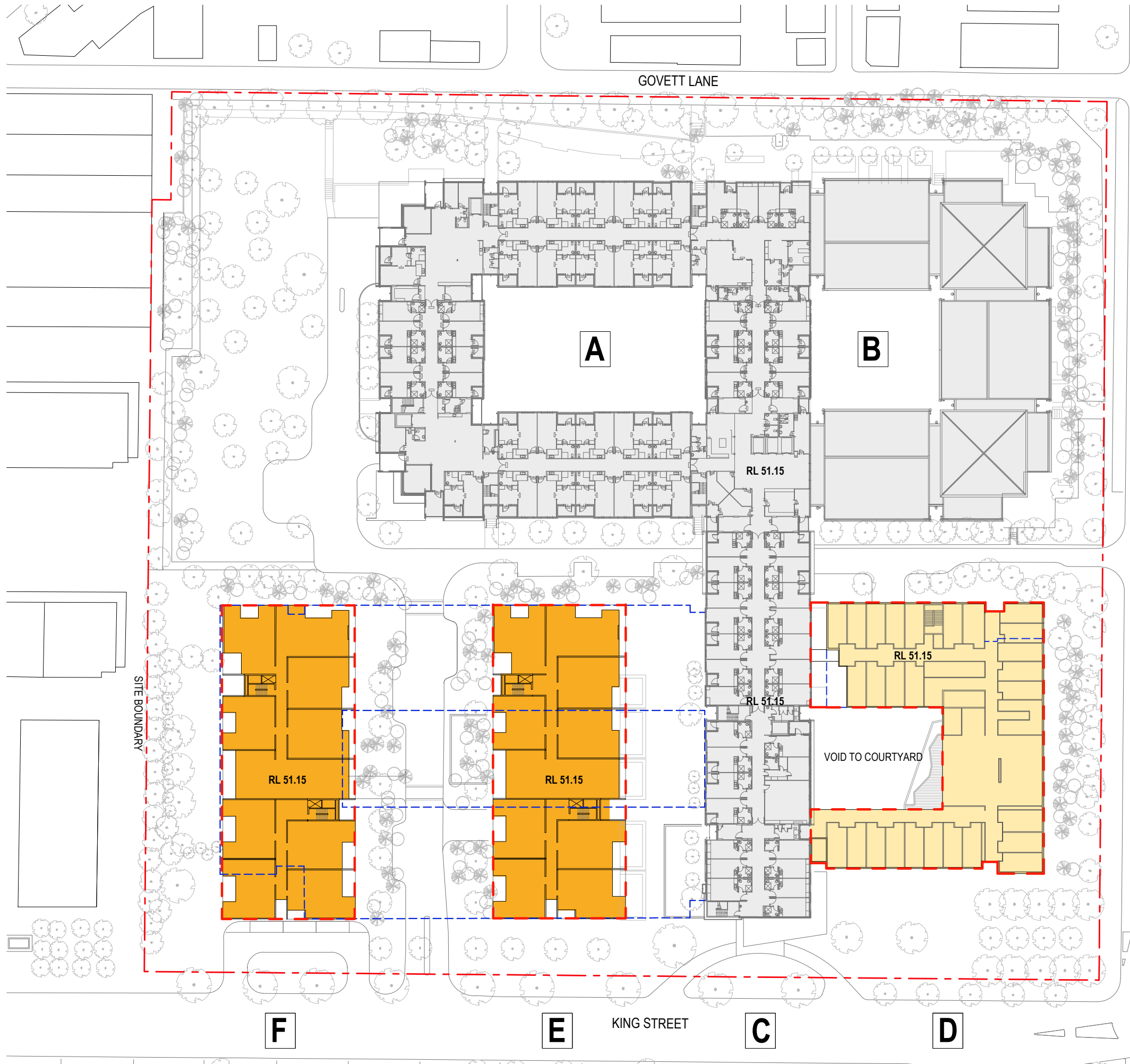
- LEGEND**
- RESIDENTIAL AGED CARE
 - RESIDENTIAL HEALTH/ WELLBEING
 - ADULT DAYCARE
 - CHILDCARE
 - RETAIL / COMMERCIAL
 - FOYER / ADMINISTRATION
 - STAFF FACILITIES
 - SELF-CARE APARTMENTS
 - EXISTING AGED CARE FACILITY
 - CARPARK / PLANT / STORE ROOM
 - PUBLIC OPEN SPACE
 - RESIDENTIAL AGED CARE RE-USE OF EXISTING BUILDING
 - RESIDENTIAL HEALTH / WELL-BEING RE-USE OF EXISTING BUILDING
 - ADULT DAYCARE RE-USE OF EXISTING BUILDING
 - SKYLIGHT
 - APPROVED SCHEME ENVELOPE
 - BUILDING FLOOR SPACE ENVELOPE SOUGHT FOR APPROVAL



0 10 20 30metres
SCALE 1:750

LEVEL 1 FLOOR PLAN
JACKSON TEECE
Nominated Architect Ian Brodie (4275)

MONTEFIORE AGED CARE FACILITY
PREFERRED PROJECT REPORT



LEGEND

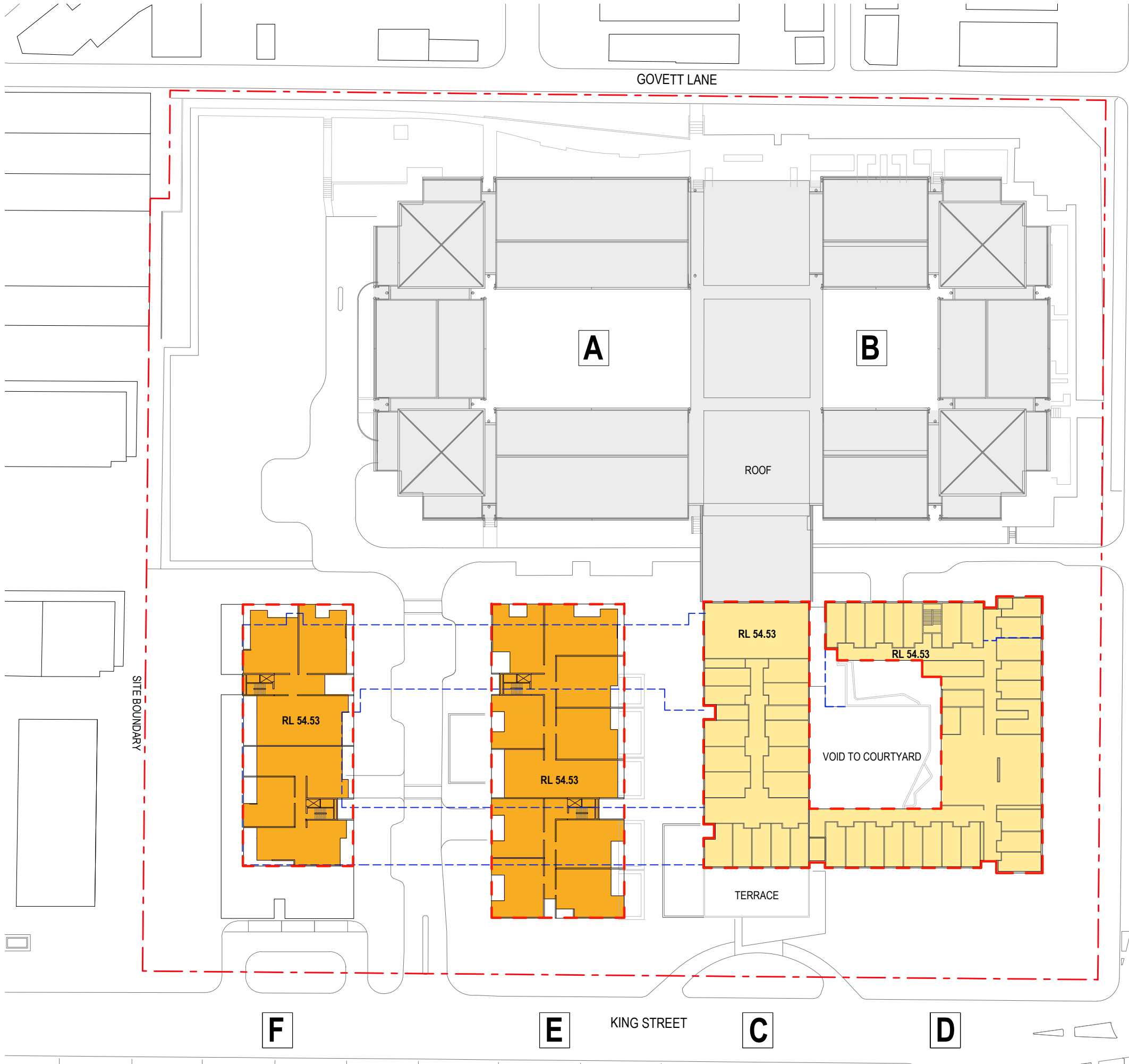
- RESIDENTIAL AGED CARE
- RESIDENTIAL HEALTH/ WELLBEING
- ADULT DAYCARE
- CHILDCARE
- RETAIL / COMMERCIAL
- FOYER / ADMINISTRATION
- STAFF FACILITIES
- SELF-CARE APARTMENTS
- EXISTING AGED CARE FACILITY
- CARPARK / PLANT / STORE ROOM
- PUBLIC OPEN SPACE
- RESIDENTIAL AGED CARE RE-USE OF EXISTING BUILDING
- RESIDENTIAL HEALTH / WELL-BEING RE-USE OF EXISTING BUILDING
- ADULT DAYCARE RE-USE OF EXISTING BUILDING
- SKYLIGHT
- APPROVED SCHEME ENVELOPE
- BUILDING FLOOR SPACE ENVELOPE SOUGHT FOR APPROVAL



0 10 20 30metres
SCALE 1:750

LEVEL 2 FLOOR PLAN
JACKSON TEECE
Nominated Architect Ian Brodie (4279)

MONTEFIORE AGED CARE FACILITY
PREFERRED PROJECT REPORT



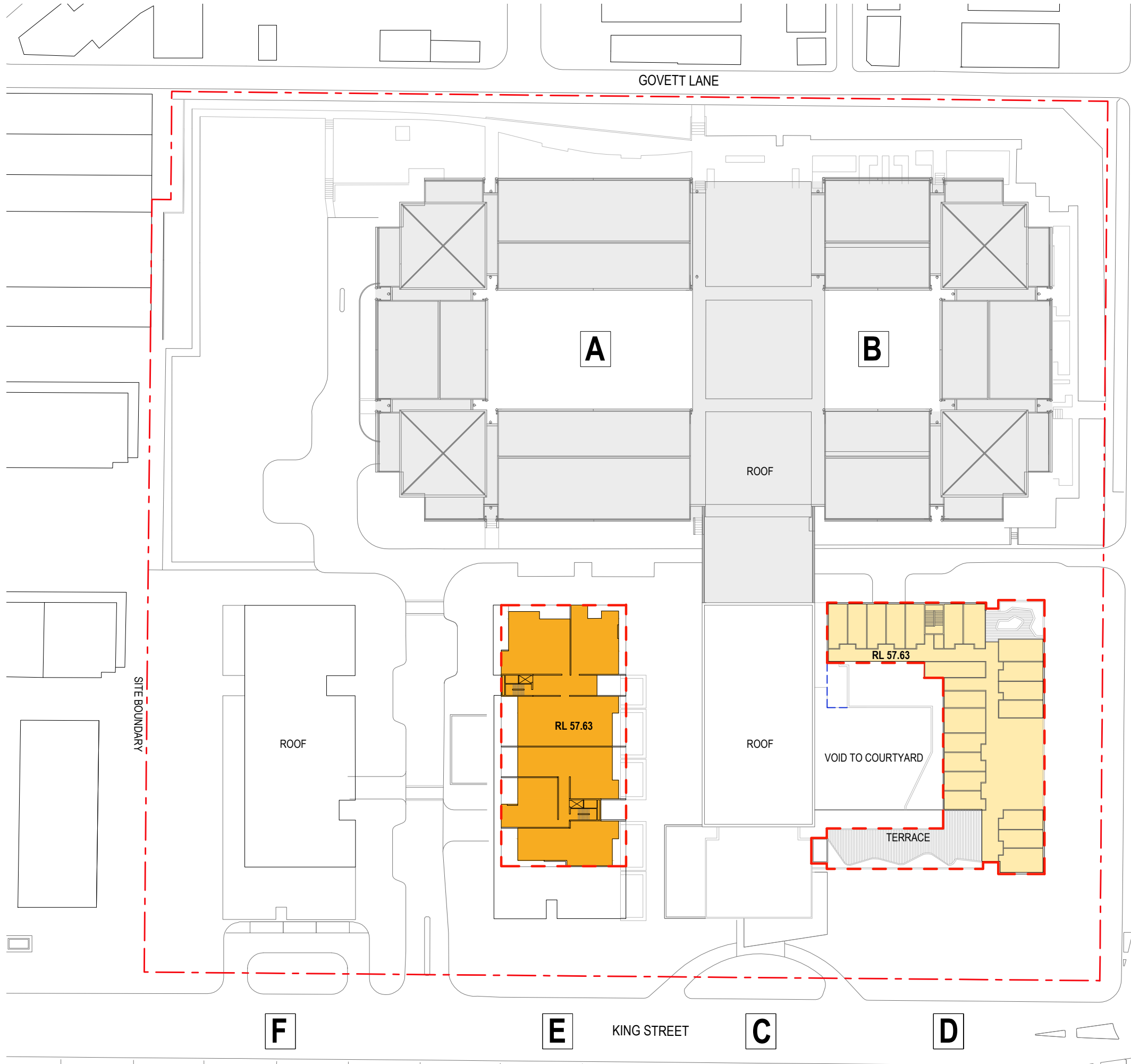
- LEGEND**
- RESIDENTIAL AGED CARE
 - RESIDENTIAL HEALTH/ WELLBEING
 - ADULT DAYCARE
 - CHILDCARE
 - RETAIL / COMMERCIAL
 - FOYER / ADMINISTRATION
 - STAFF FACILITIES
 - SELF-CARE APARTMENTS
 - EXISTING AGED CARE FACILITY
 - CARPARK / PLANT / STORE ROOM
 - PUBLIC OPEN SPACE
 - RESIDENTIAL AGED CARE RE-USE OF EXISTING BUILDING
 - RESIDENTIAL HEALTH / WELL-BEING RE-USE OF EXISTING BUILDING
 - ADULT DAYCARE RE-USE OF EXISTING BUILDING
 - SKYLIGHT
 - APPROVED SCHEME ENVELOPE
 - BUILDING FLOOR SPACE ENVELOPE SOUGHT FOR APPROVAL



0 10 20 30metres
SCALE 1:750

LEVEL 3 FLOOR PLAN
JACKSON TEECE
Nominated Architect Ian Brodie (4275)

MONTEFIORE AGED CARE FACILITY
PREFERRED PROJECT REPORT

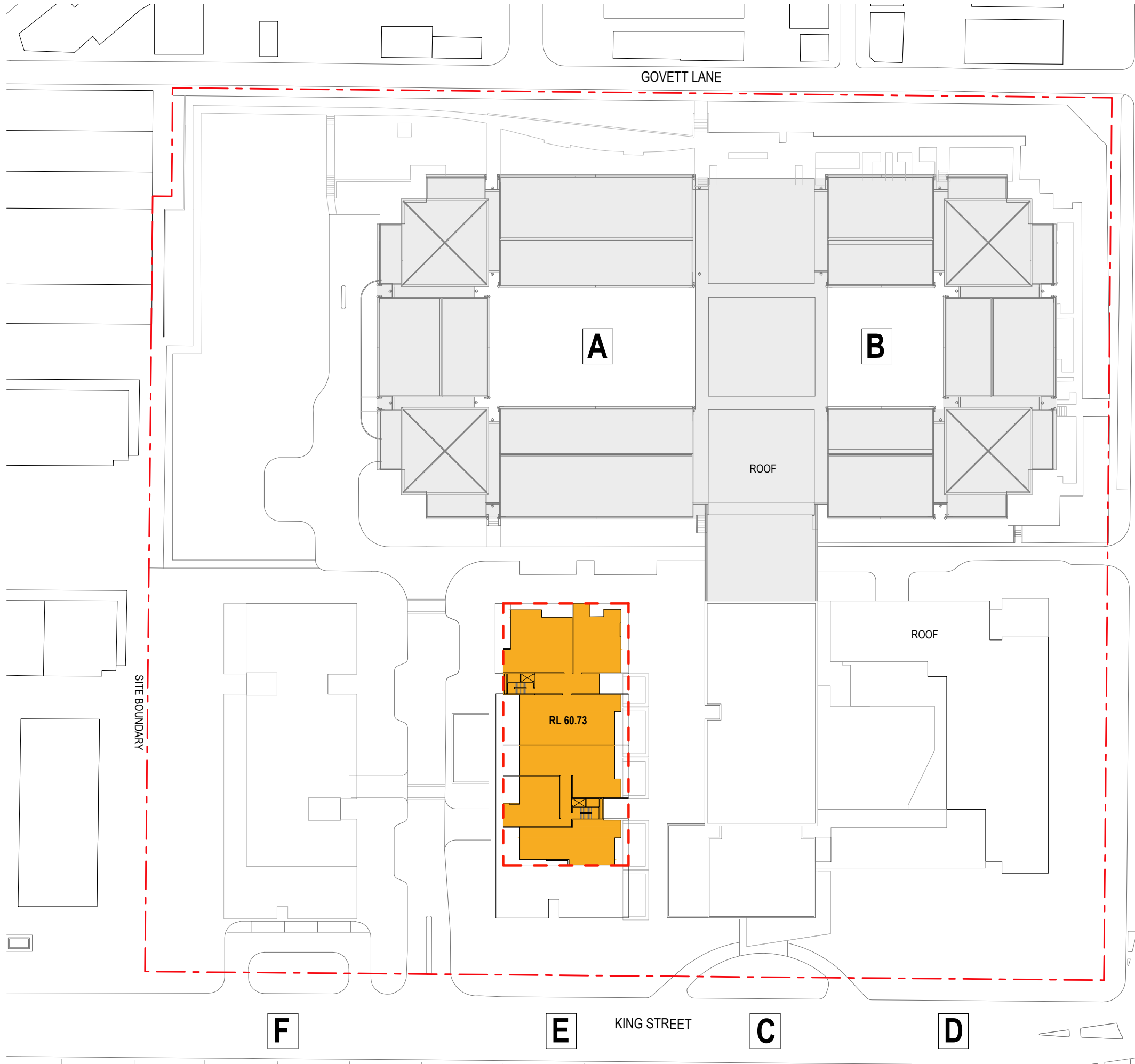


- LEGEND
- RESIDENTIAL AGED CARE
 - RESIDENTIAL HEALTH/ WELLBEING
 - ADULT DAYCARE
 - CHILDCARE
 - RETAIL / COMMERCIAL
 - FOYER / ADMINISTRATION
 - STAFF FACILITIES
 - SELF-CARE APARTMENTS
 - EXISTING AGED CARE FACILITY
 - CARPARK / PLANT / STORE ROOM
 - PUBLIC OPEN SPACE
 - RESIDENTIAL AGED CARE RE-USE OF EXISTING BUILDING
 - RESIDENTIAL HEALTH / WELL-BEING RE-USE OF EXISTING BUILDING
 - ADULT DAYCARE RE-USE OF EXISTING BUILDING
 - SKYLIGHT
 - APPROVED SCHEME ENVELOPE
 - BUILDING FLOOR SPACE ENVELOPE SOUGHT FOR APPROVAL



0 10 20 30metres
SCALE 1:750

LEVEL 4 FLOOR PLAN
JACKSON TEECE
Nominated Architect Ian Brodie (4275)



LEGEND

- RESIDENTIAL AGED CARE
- RESIDENTIAL HEALTH/ WELLBEING
- ADULT DAYCARE
- CHILDCARE
- RETAIL / COMMERCIAL
- FOYER / ADMINISTRATION
- STAFF FACILITIES
- SELF-CARE APARTMENTS
- EXISTING AGED CARE FACILITY
- CARPARK / PLANT / STORE ROOM
- PUBLIC OPEN SPACE
- RESIDENTIAL AGED CARE RE-USE OF EXISTING BUILDING
- RESIDENTIAL HEALTH / WELL-BEING RE-USE OF EXISTING BUILDING
- ADULT DAYCARE RE-USE OF EXISTING BUILDING
- SKYLIGHT
- APPROVED SCHEME ENVELOPE
- BUILDING FLOOR SPACE ENVELOPE SOUGHT FOR APPROVAL



0 10 20 30metres
SCALE 1:750

LEVEL 5 FLOOR PLAN
JACKSON TEECE
Nominated Architect Ian Brodie (4273)