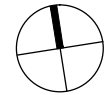


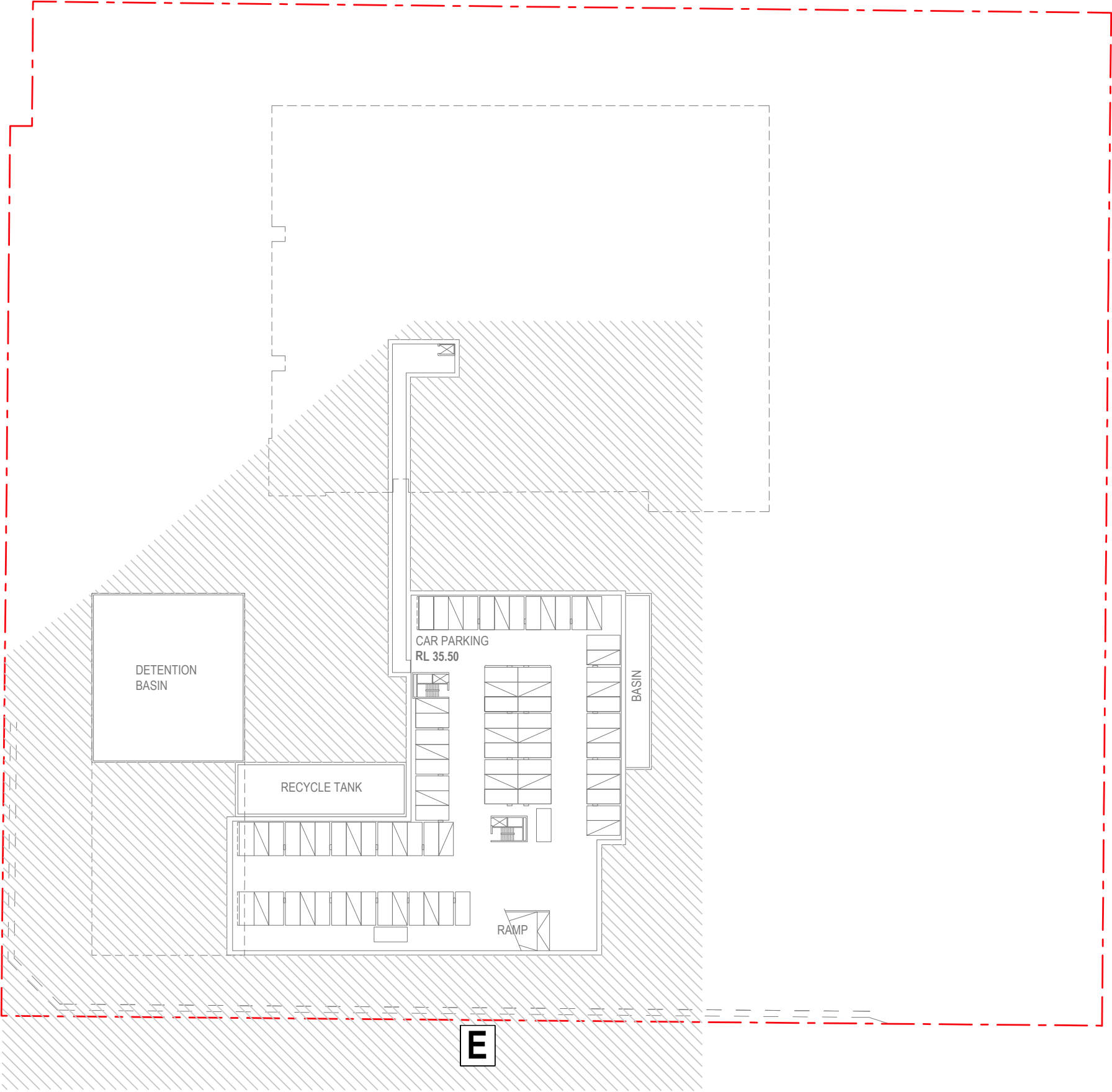
GFA BASEMENT LEVEL 1 = 4909m2

NOTE: APPROVED SCHEME HAS BEEN RE-CALCUI
ACCORDING TO SEPP SENIORS GFA CALCULATIO



0 10 20 30metres
SCALE 1:750

LEVEL 3 APPROVED GFA
JACKSON TEECE
Nominated Architect Ian Brodie (4275)



GFA BASEMENT LEVEL 2 = 0m2

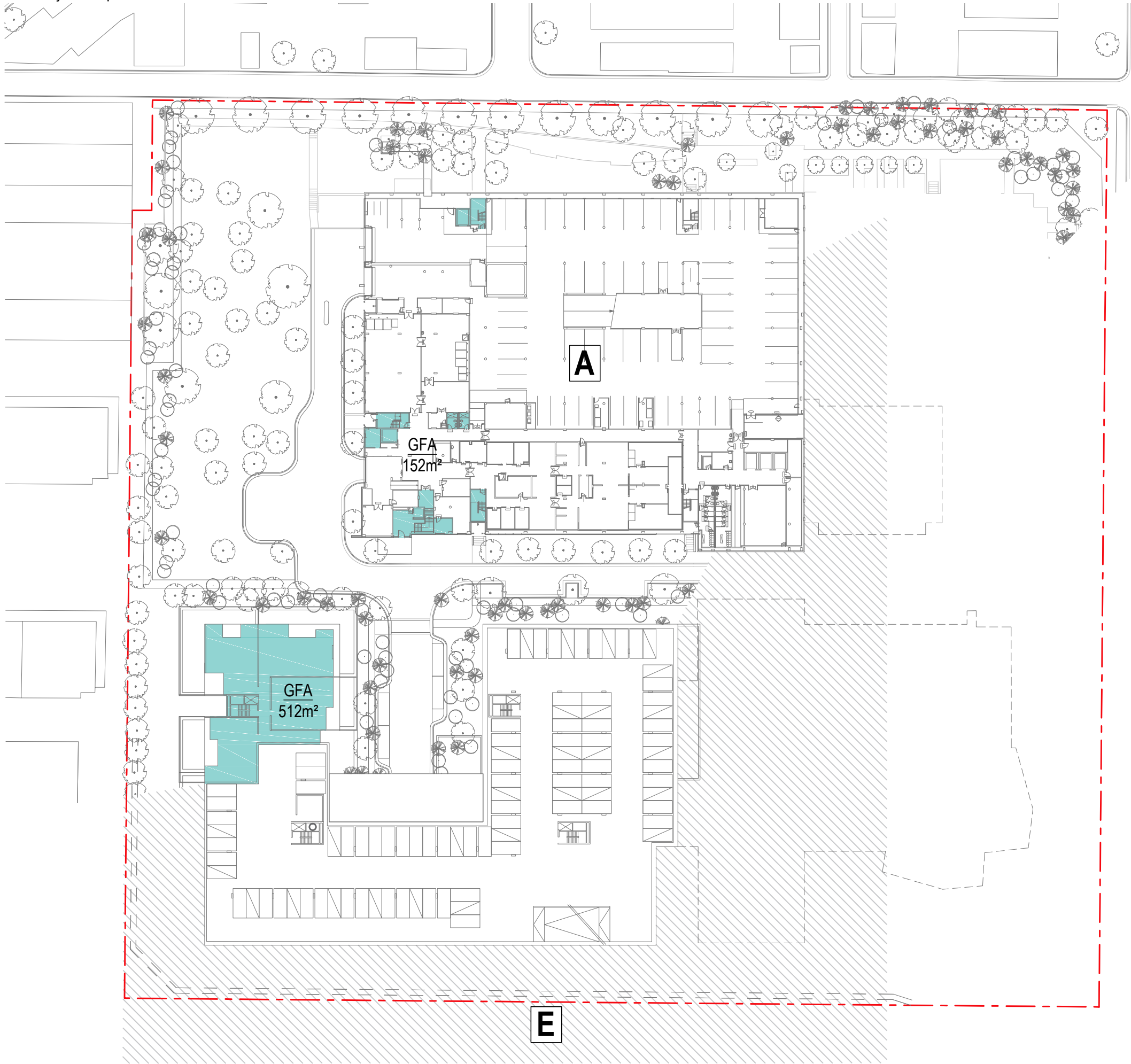


0 10 20
SCALE 1:750

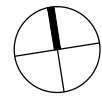
BASEMENT LEVEL 2 PROPOSED GFA

JACKSON TEECE

Nominated Architect Ian Brodie (4275)



GFA BASEMENT LEVEL 1 = 664m2

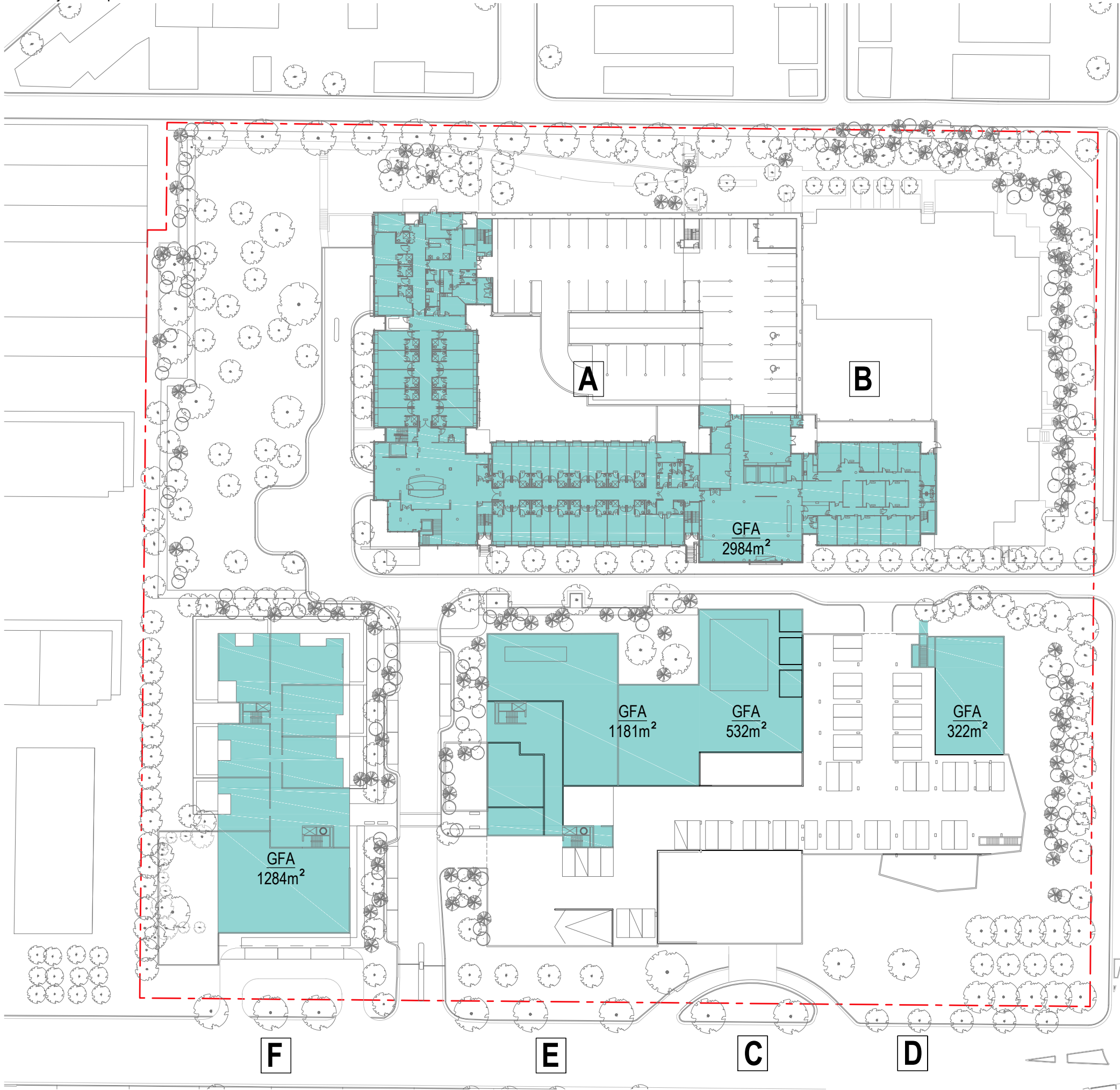


0 10 20 30metres
SCALE 1:750

BASEMENT LEVEL 1 PROPOSED GFA

JACKSON TEECE

Nominated Architect Ian Brodie (4275)



GFA LOWER GROUND LEVEL = 6267m²



0 10 20 30metres
SCALE 1:750

LOWER GROUND LEVEL PROPOSED GFA

JACKSON TEECE

Nominated Architect Ian Brodie (4275)

