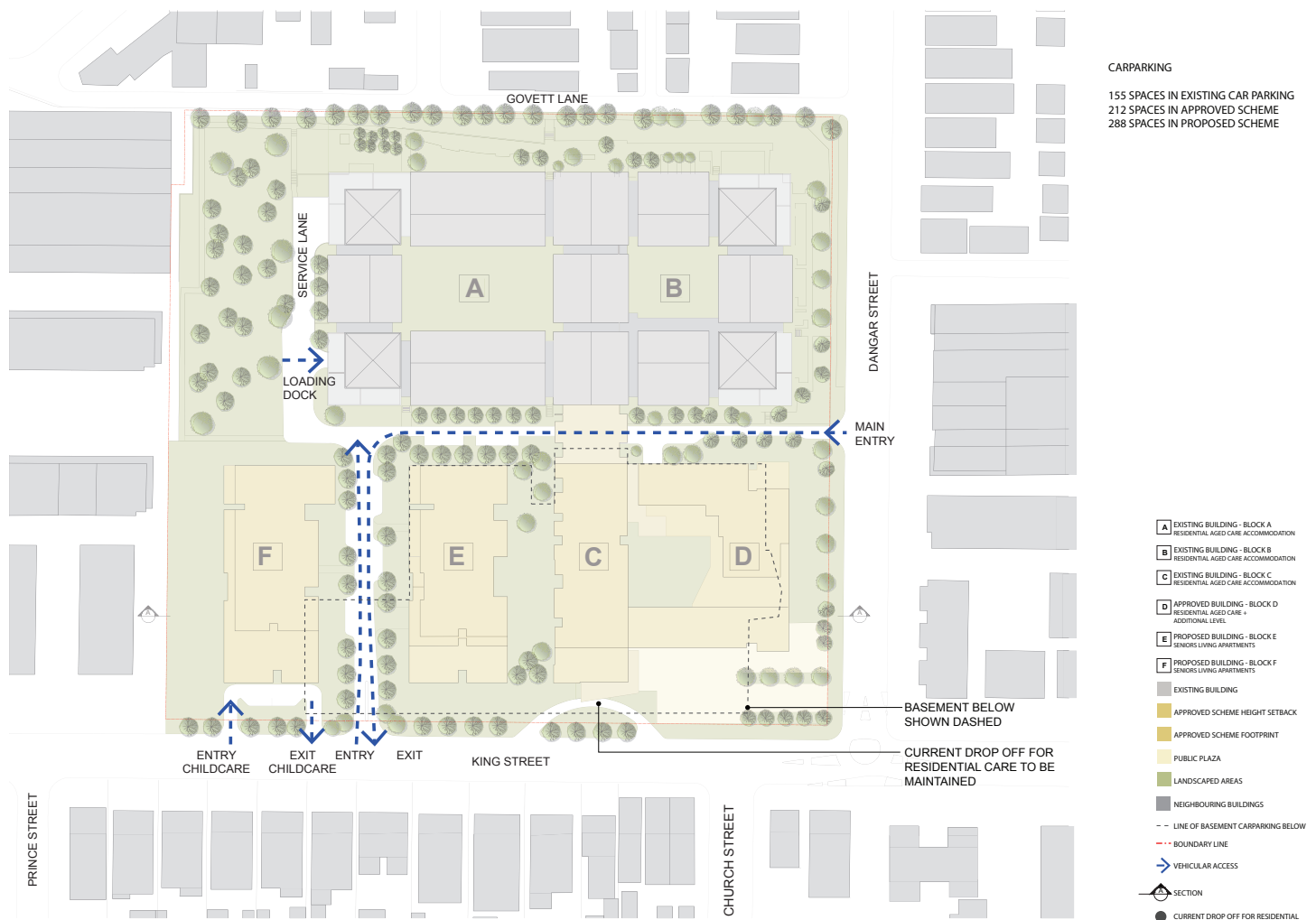


Traffic and Parking

- The visual corridor between Block E and F provides clear vehicular access
- There is separate access for childcare
- The approved 2011 Concept Plan provides 212 carparking spaces
- The proposed amended Concept Plan provides 288 carparking spaces

Traffic Plan



A traffic assessment has been undertaken by Traffix to understand the potential traffic and parking implications of the amended Concept Plan.

Traffix have concluded that the development will not generate traffic that exceeds the capacity of the surrounding road network.

This includes a calculation of the trips likely to be generated during the peak period of 3.00pm-4.00pm.

Trip Generation Calculations:

- 95 additional units @ generation rate of 0.3 vehicles per unit
- 117 additional beds @ generation rate of 0.1 vehicles per bed
- Peak generation = 41 Trips (30 in & 11 out) in the PM peak hour

Additional trips are distributed onto network as per existing trip distribution

For more information or to lodge questions or feedback:

☎ 1800 266 901

✉ montefiore@urbis.com.au

Look out for the next community newsletter