

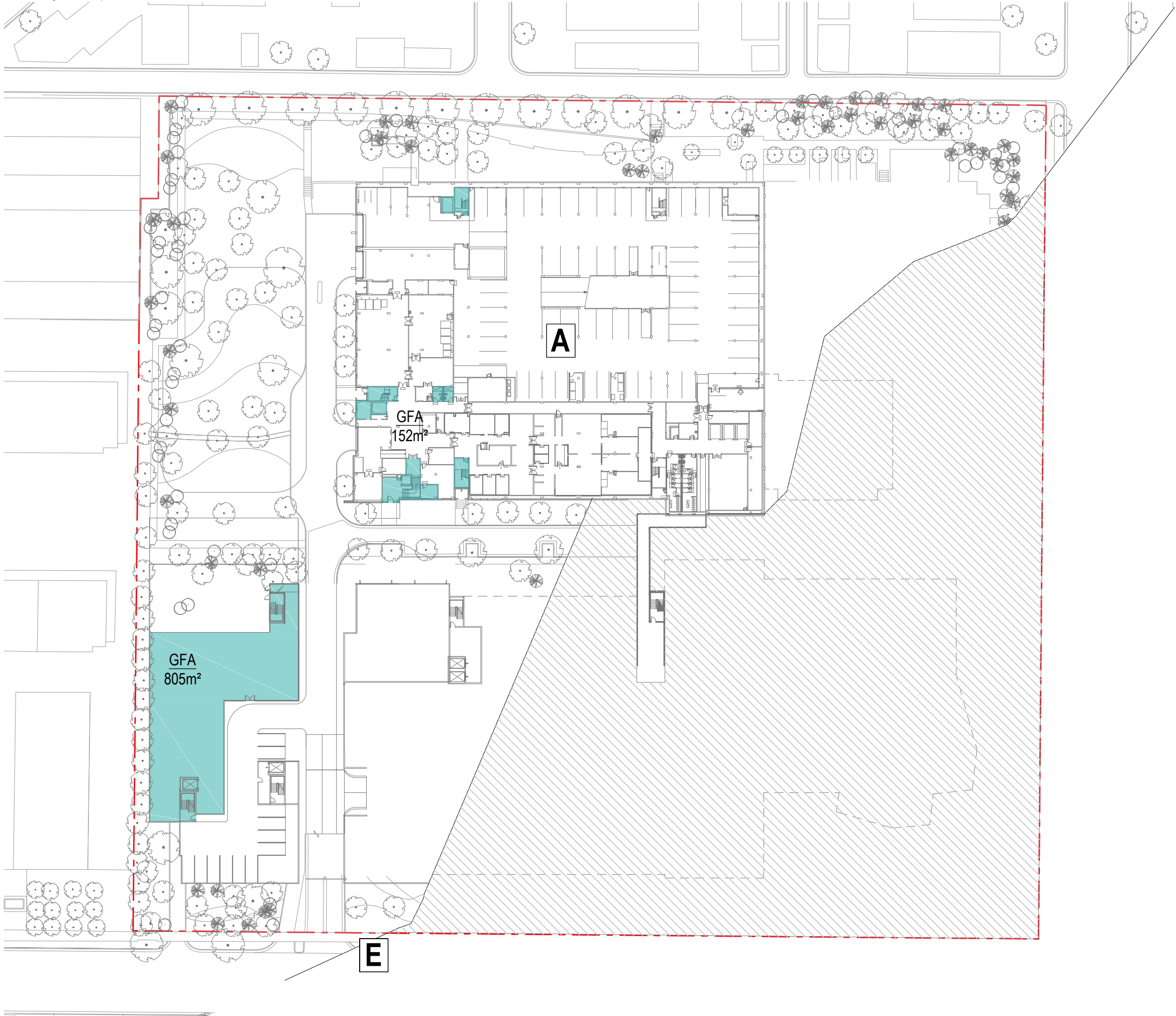


PROPOSED SCHEME				
BLOCK	GFA m2	SELF CAR APARTMENTS	RESIDENTIAL AGED CARE	CARPARKING
BLOCK A, B & C	23949	0	291	
BLOCK D	7787	0	111	
BLOCK E & F	14287	104	0	
Total	46023	104	402	276

SITE AREA
FSR29,353
1.57

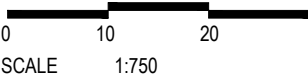
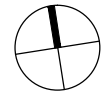
APPROVED SCHEME - CALCULATIONS AS PREVIOUSLY ISSUED				
BLOCK	GFA m2	SELF CAR APARTMENTS	RESIDENTIAL AGED CARE	CARPARKING
BLOCK A, B & C	24098	0	262	
BLOCK D	6553	0	95	
BLOCK E	16619	36	0	
Total	47270	36	357	217

SITE AREA
FSR29,353
1.61



GFA BASEMENT LEVEL 1 = 957m2

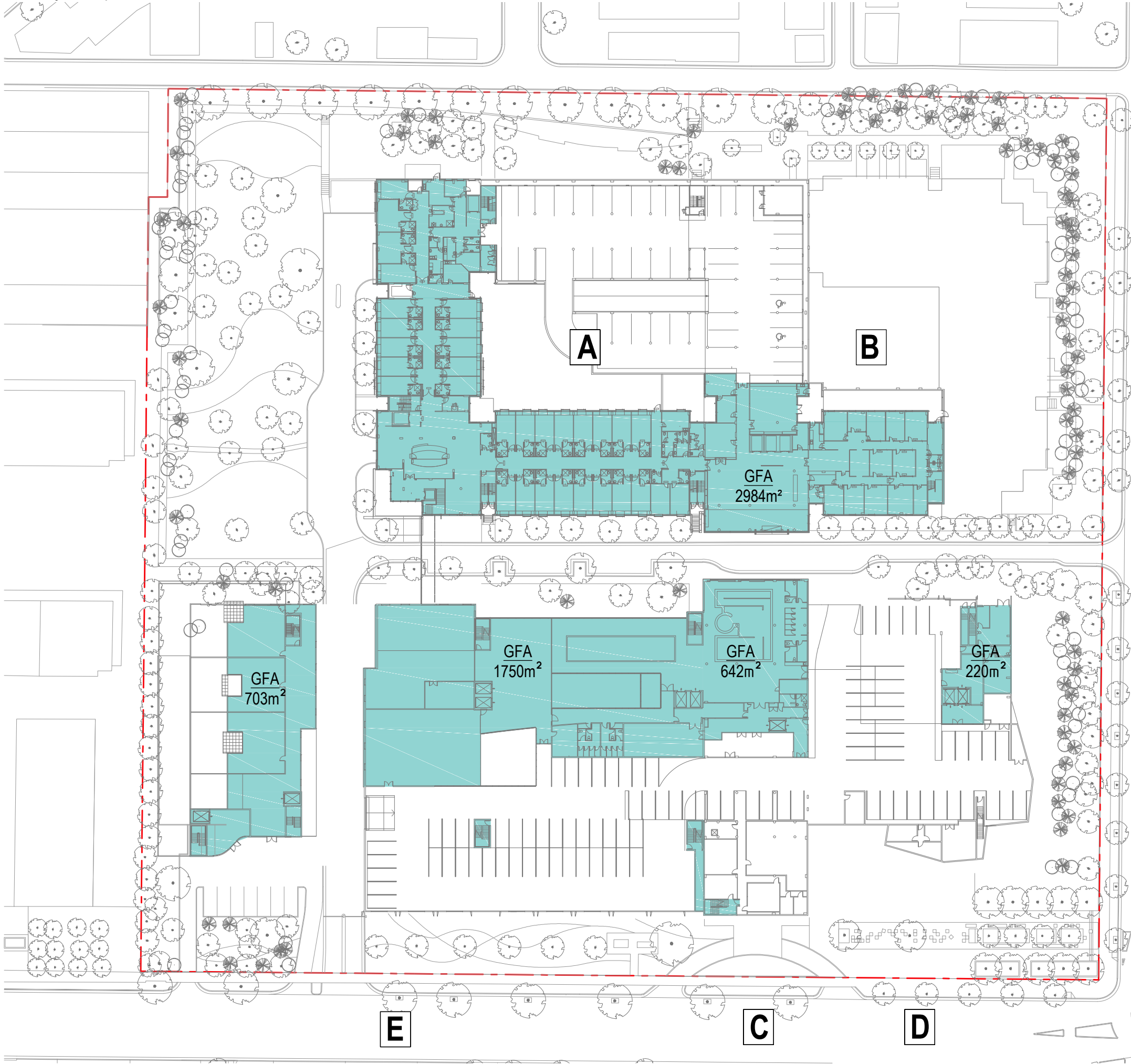
NOTE: APPROVED SCHEME HAS BEEN RE-CALCULATED
ACCORDING TO SEPP SENIORS GFA CALCULATION



BASEMENT LEVEL 1 APPROVED GFA

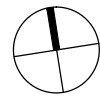
JACKSON TEECE

Nominated Architect Ian Brodie (4475)



GFA BASEMENT LEVEL 1 = 6299m2

NOTE: APPROVED SCHEME HAS BEEN RE-CALCULATE
ACCORDING TO SEPP SENIORS GFA CALCULATION



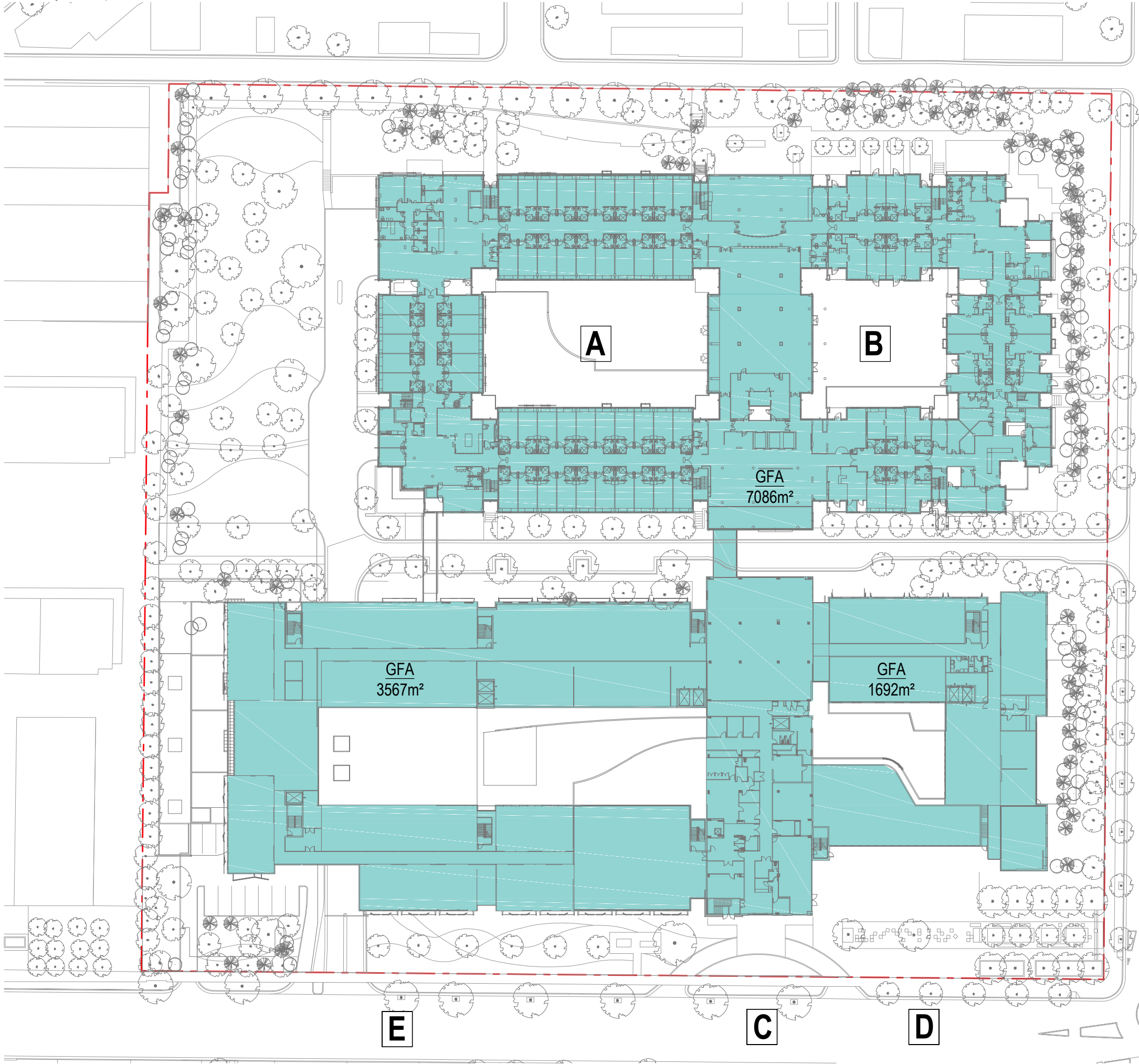
0 10 20 30metres

SCALE 1:750

LOWER GROUND APPROVED GFA

JACKSON TEECE

Nominated Architect Ian Brodie (4275)



GFA
7086m²

GFA
3567m²

GFA
1692m²

GFA BASEMENT LEVEL 1 = 12345m2

NOTE: APPROVED SCHEME HAS BEEN RE-CALCULATED
ACCORDING TO SEPP SENIORS GFA CALCULATION



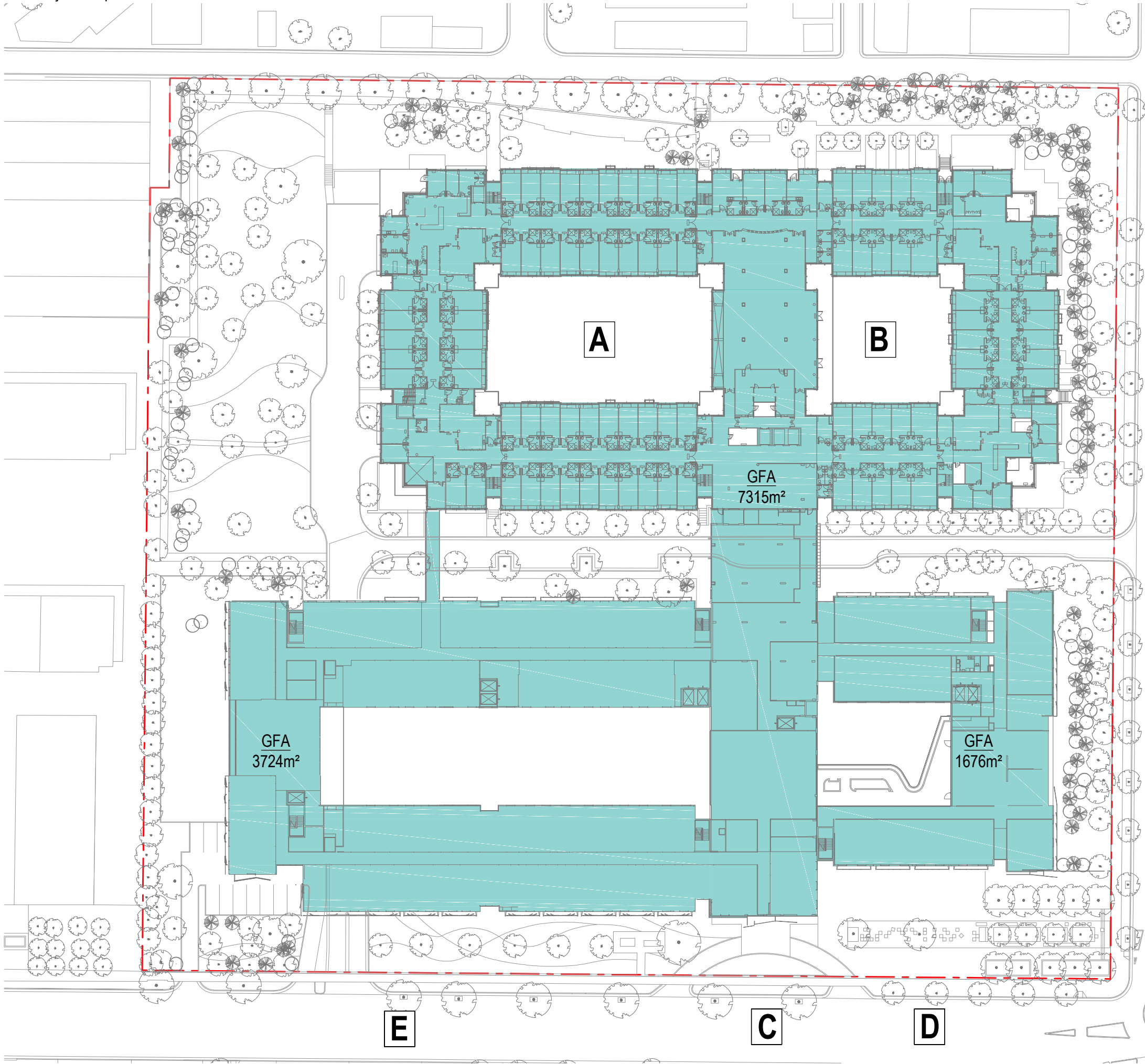
0 10 20 30metres

SCALE 1:750

GROUND LEVEL APPROVED GFA

JACKSON TEECE

Nominated Architect Ian Brodie (4273)



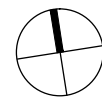
GFA
7315m²

GFA
3724m²

GFA
1676m²

GFA BASEMENT LEVEL 1 = 12715m2

NOTE: APPROVED SCHEME HAS BEEN RE-CALCUI
ACCORDING TO SEPP SENIORS GFA CALCULATIO

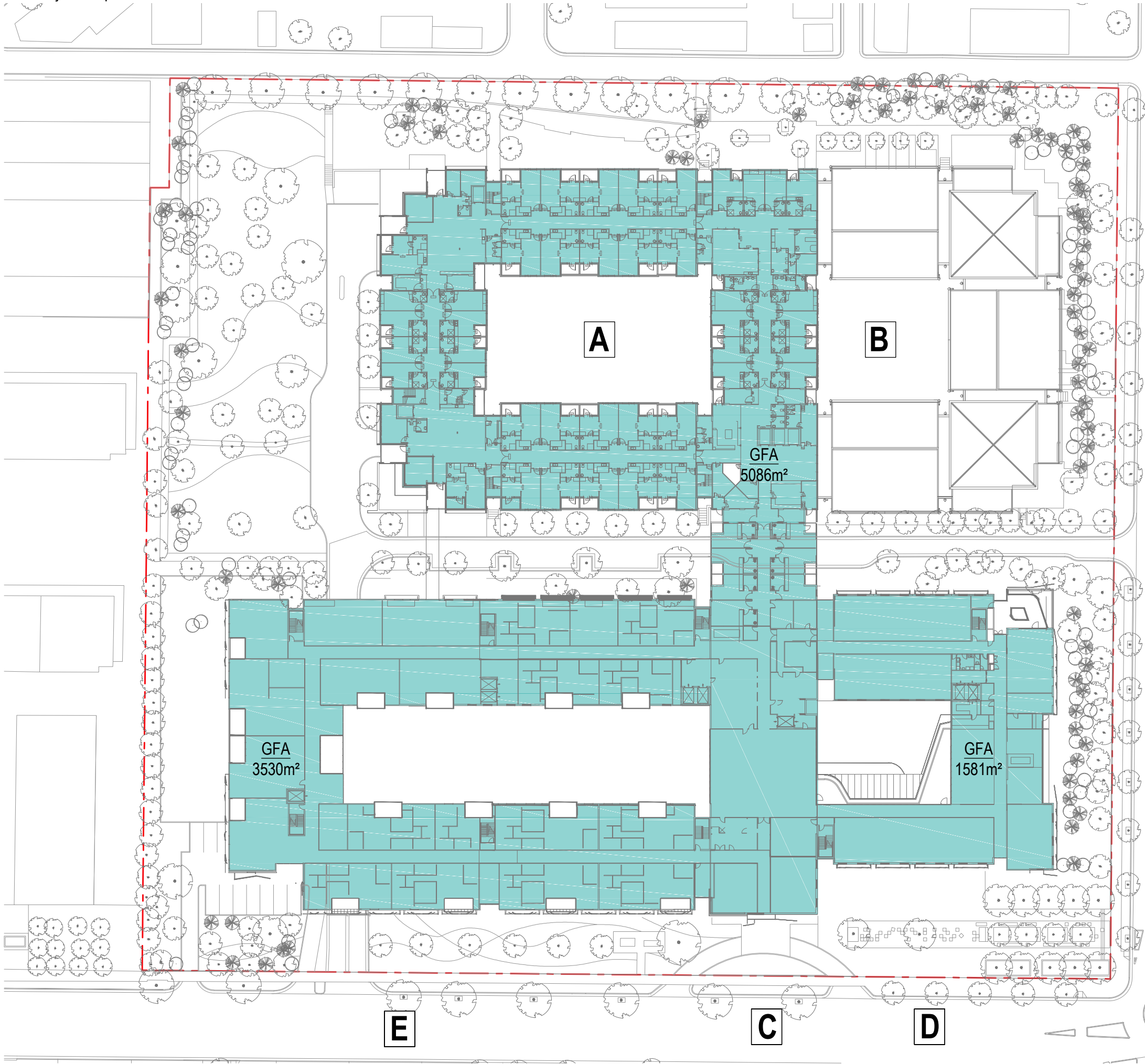


SCALE 1:750

LEVEL 1 APPROVED GFA

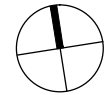
JACKSON TEECE

Nominated Architect Ian Brodie (4275)



GFA BASEMENT LEVEL 1 = 10197m2

NOTE: APPROVED SCHEME HAS BEEN RE-CALCUI
ACCORDING TO SEPP SENIORS GFA CALCULATIO



0 10
SCALE 1:750

LEVEL 2 APPROVED GFA
JACKSON TEECE
Nominated Architect Ian Brodie (4275)