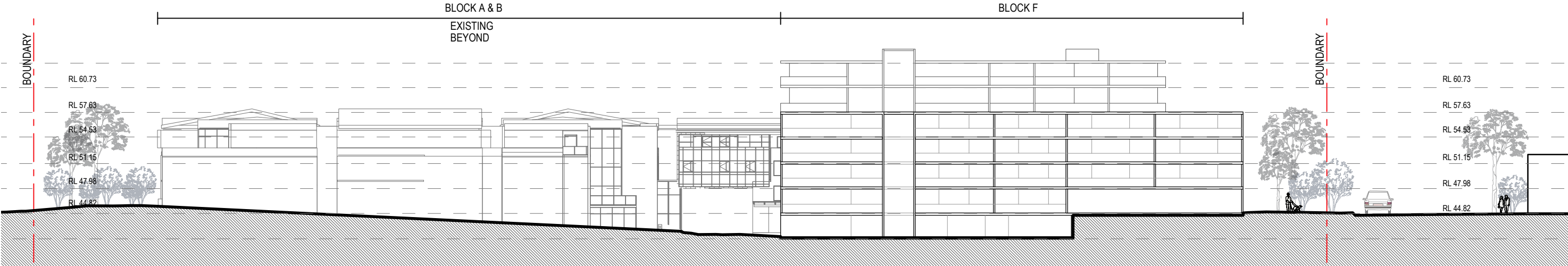
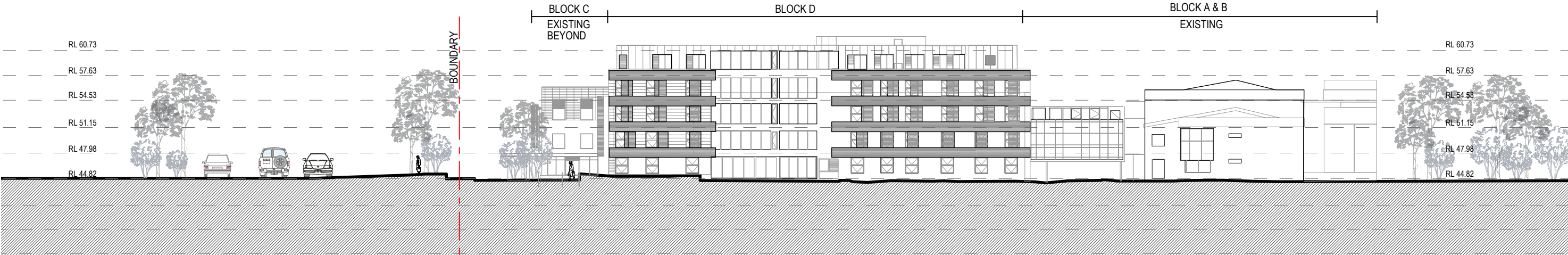


KING ST ELEVATION

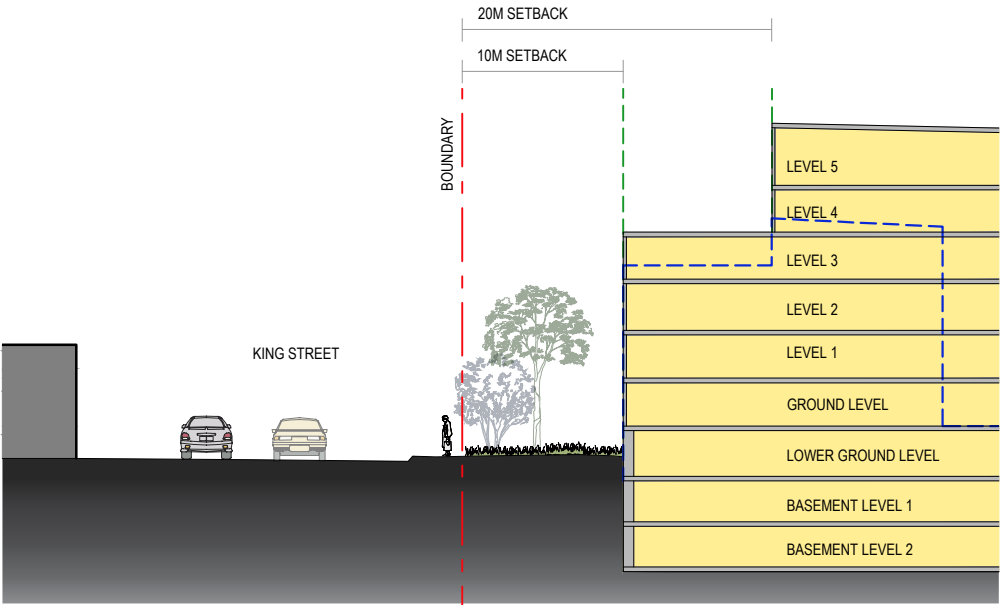


WEST ELEVATION

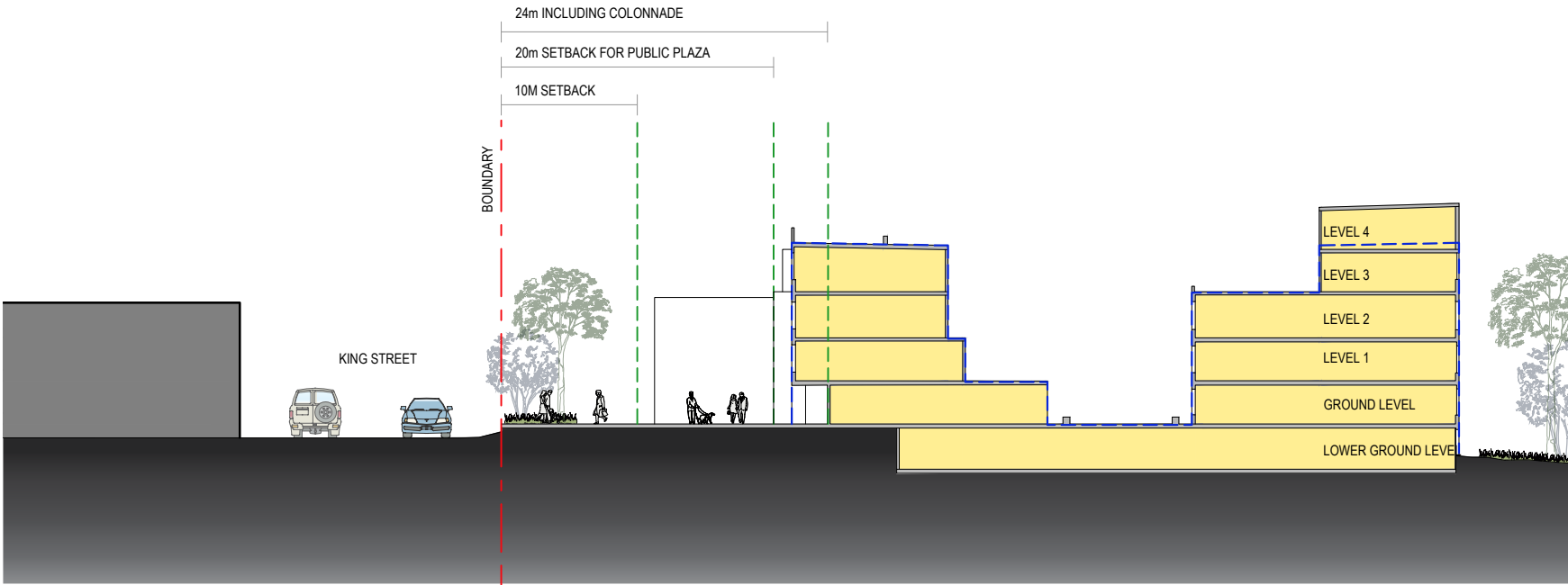


DANGAR ST ELEVATION





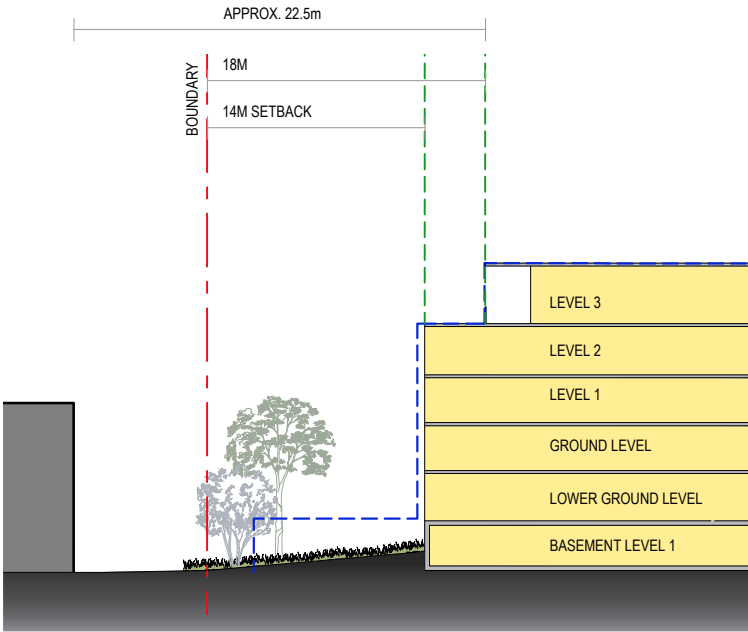
SECTION 1



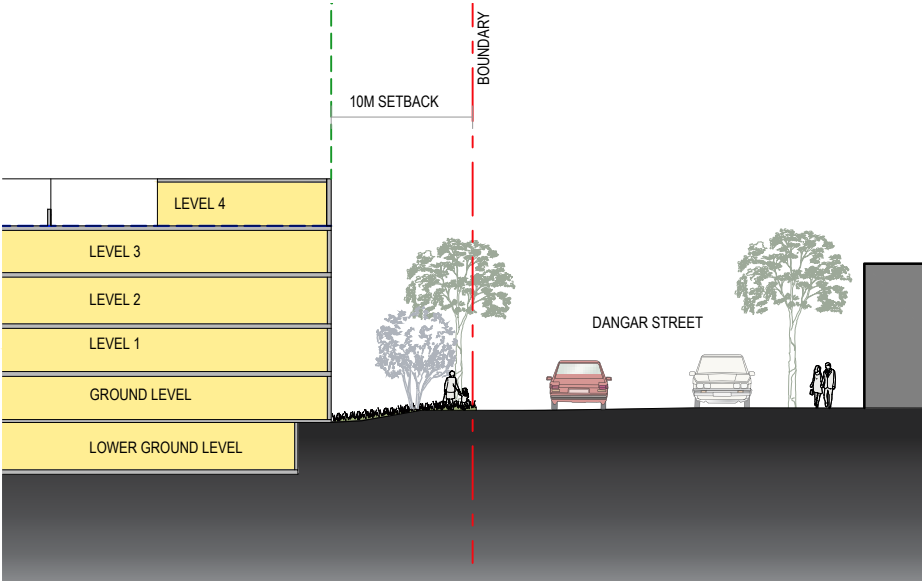
SECTION 2



SECTION KEY PLAN



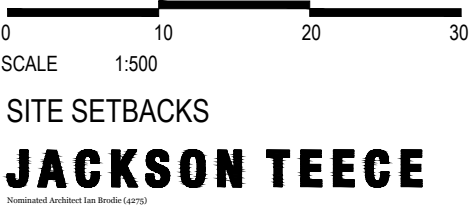
SECTION 3



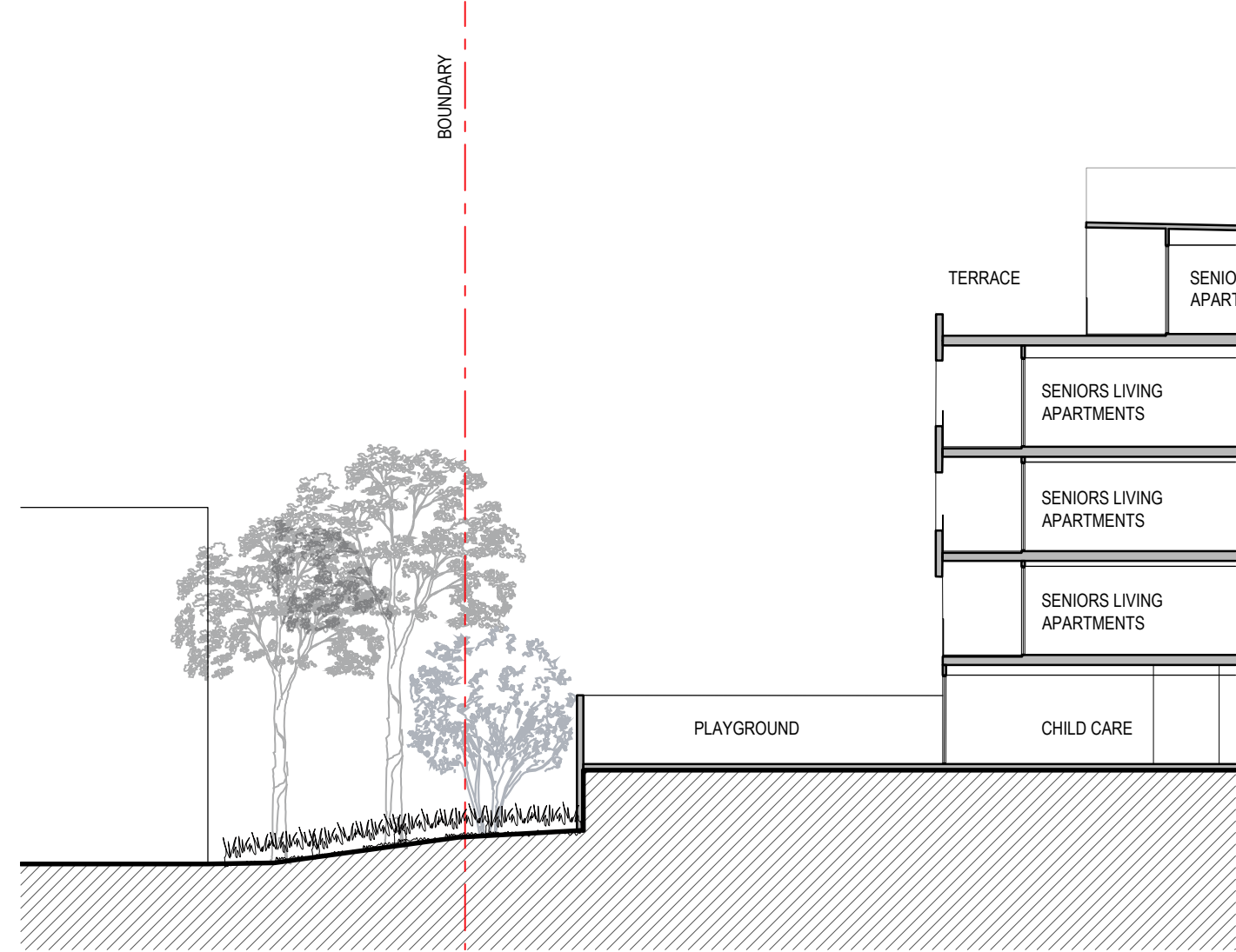
SECTION 4

LEGEND:

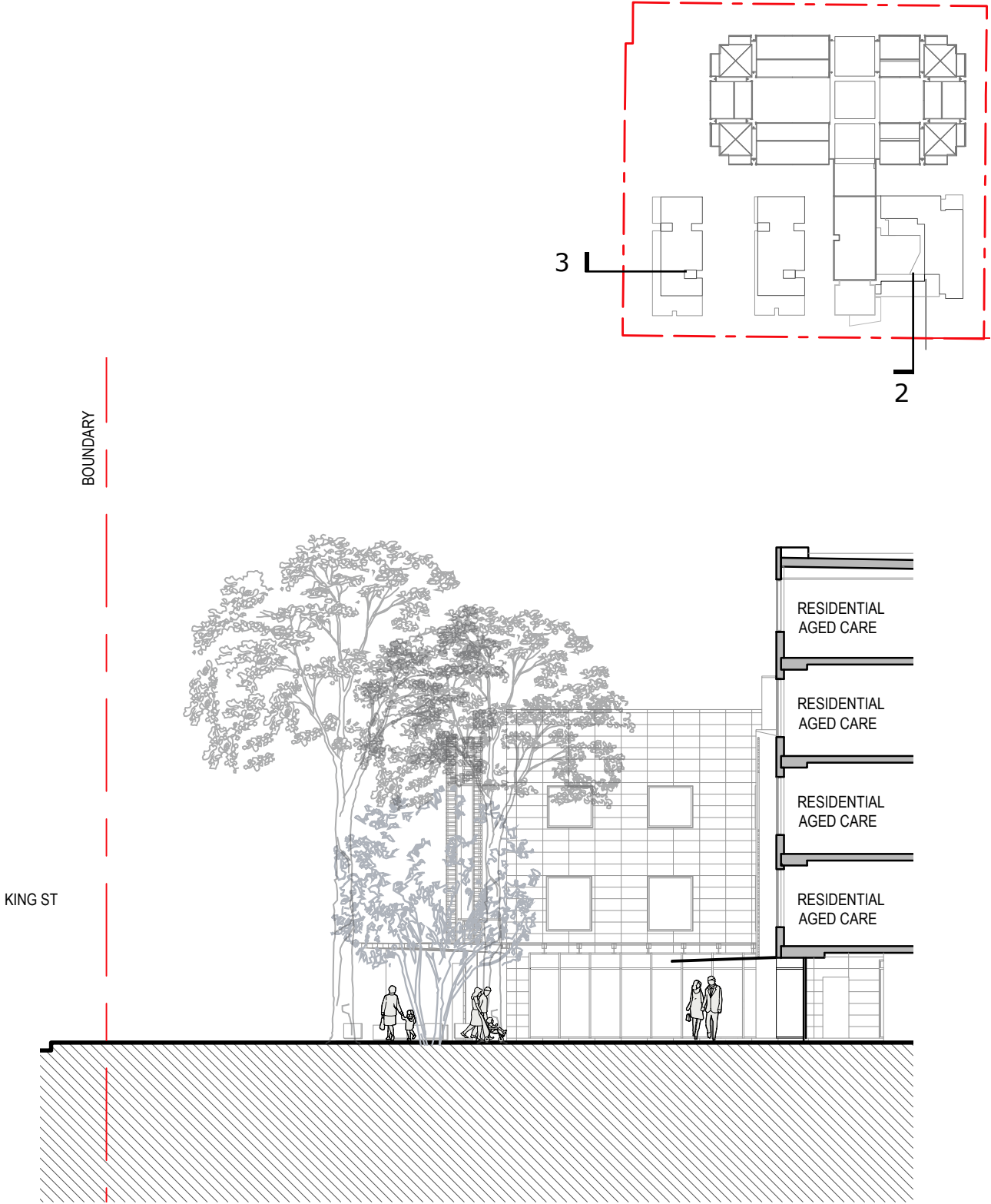
- PROPOSED RESIDENTIAL AGED CARE
- EXISTING RESIDENTIAL AGED CARE
- APPROVED SCHEME ENVELOPE



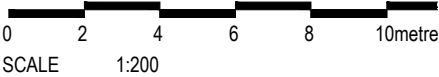
SITE SETBACKS  
**JACKSON TEECE**  
Nominated Architect Ian Bradie (4275)



DETAIL SECTION - SECTION 3



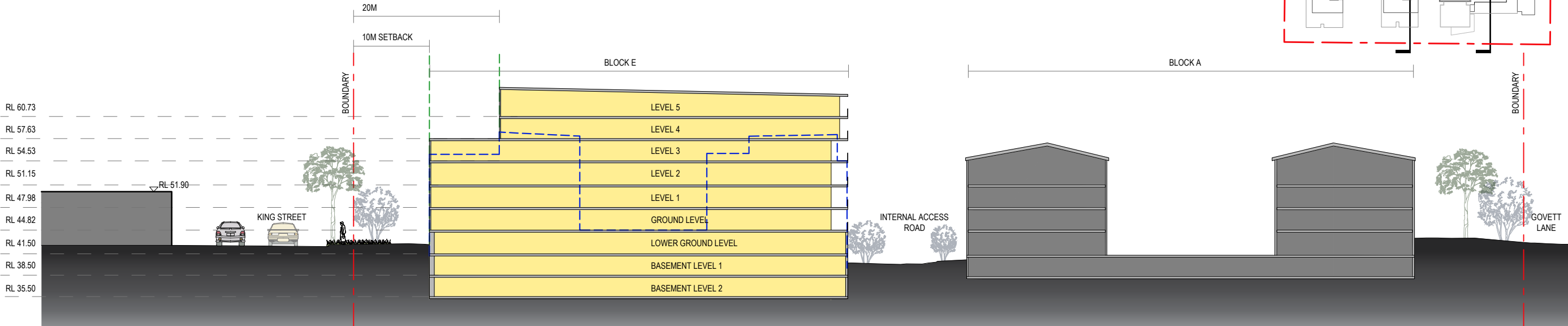
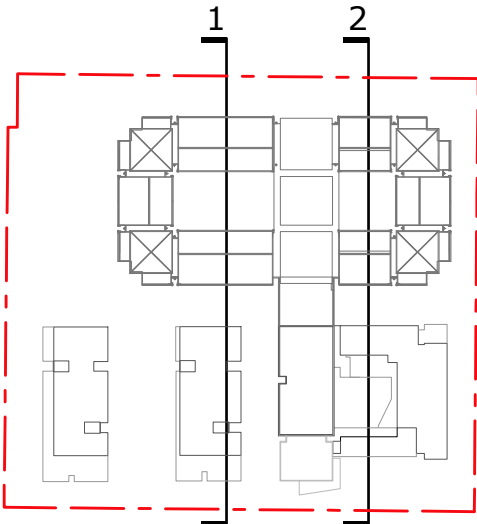
DETAIL SECTION - SECTION 2



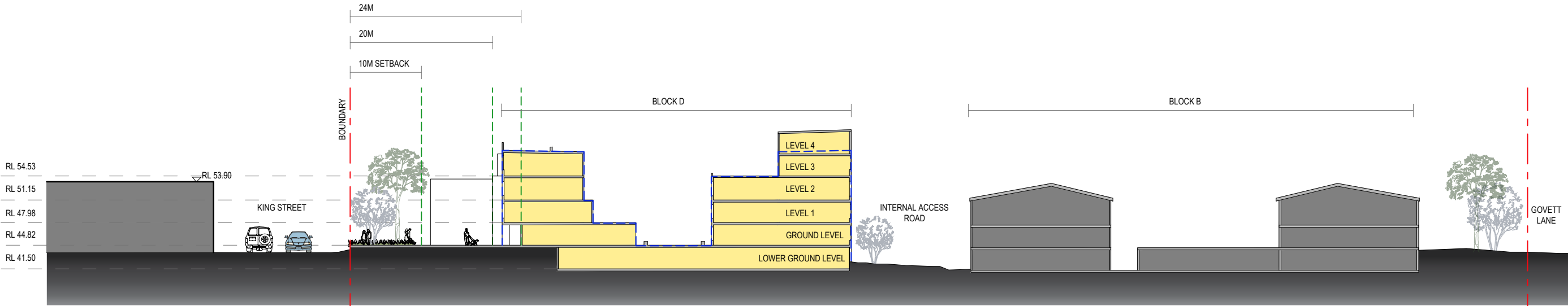
DETAILED SECTIONS

**JACKSON TEECE**

Nominated Architect Ian Brodie (4273)



SECTION 1

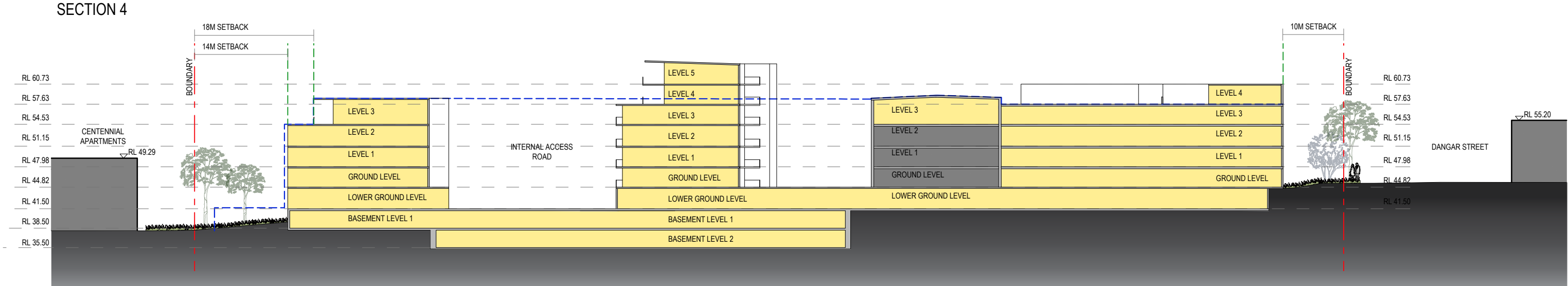
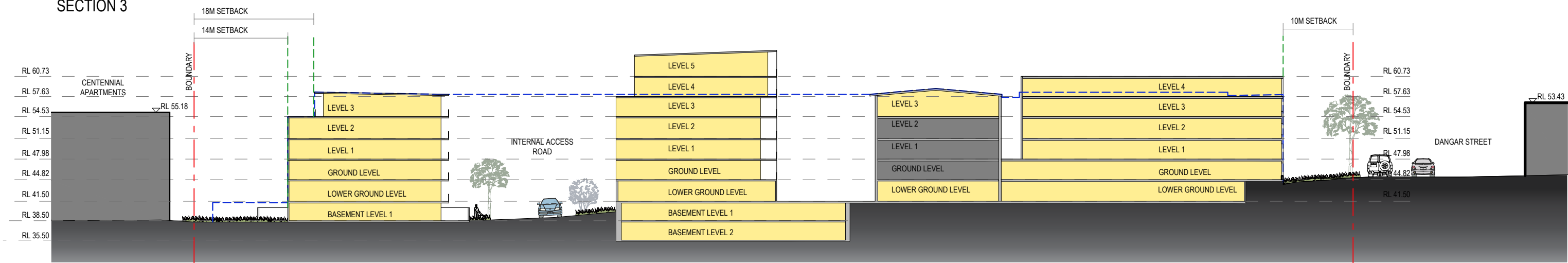
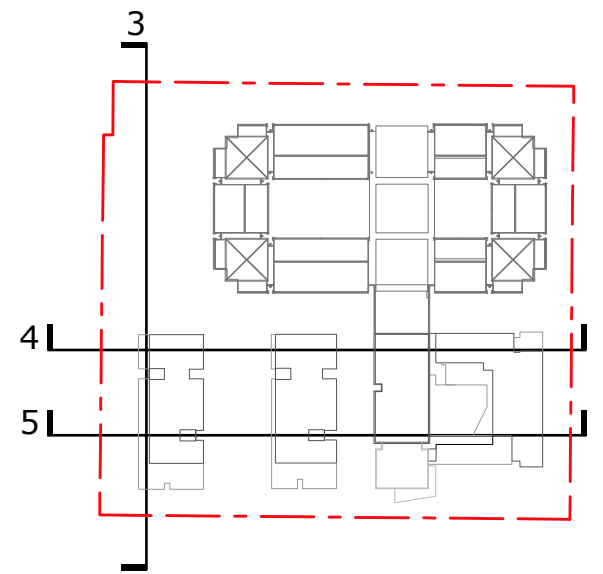
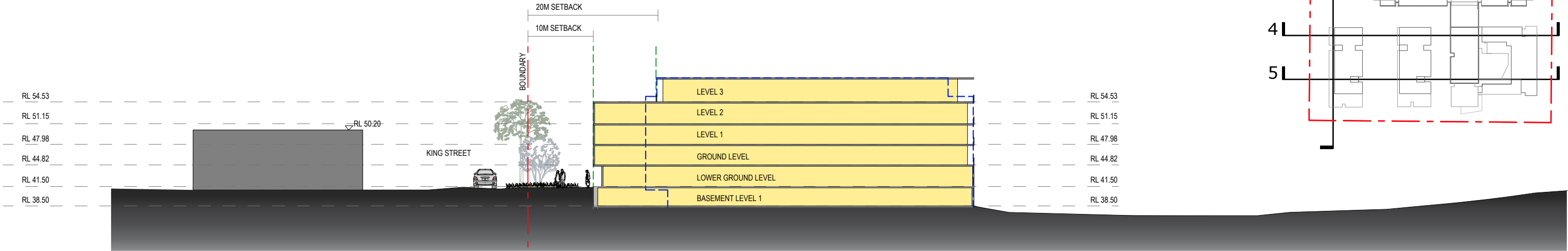


SECTION 2

LEGEND:

- PROPOSED RESIDENTIAL AGED CARE
- EXISTING RESIDENTIAL AGED CARE
- APPROVED SCHEME ENVELOPE

0 10 20 30m  
SCALE 1:600  
SITE SECTIONS 1  
**JACKSON TEECE**  
Nominated Architect Ian Brodie (4275)



LEGEND:

- PROPOSED RESIDENTIAL AGED CARE
- EXISTING RESIDENTIAL AGED CARE
- APPROVED SCHEME ENVELOPE



SITE SECTIONS 2  
**JACKSON TEECE**  
Nominated Architect Ian Brodie (4275)





VIEW 1 - PHOTOMONTAGE FROM CORNER OF DANGAR & KING STREET LOOKING WEST ALONG KING ST





VIEW 2 - PHOTOMONTAGE FROM CORNER OF PRINCE & KING STREET LOOKING EAST ALONG KING ST INCLUDING CENTENNIAL APARTMENTS





VIEW 3 - PHOTOMONTAGE AT MAIN ENTRANCE ON DANGAR STREET LOOKING SOUTH





VIEW 4 - PHOTOMONTAGE FROM CHURCH STREET LOOKING NORTH





DETAIL PERSPECTIVE - SOUTH FACADE & PLAZA



DETAIL PERSPECTIVE - SOUTHERN FACADE, PLAZA & DETAIL





DETAIL PERSPECTIVE - EASTERN FACADE



BLOCK D SOUTH FACADE



BLOCK D EAST FACADE

MATERIAL LEGEND

CB-1	CERAMIC BATTENS: EXTERNAL SCREENS LIGHT BROWN COLOUR
CB-2	CERAMIC BATTENS: EXTERNAL SCREENS OFF WHITE COLOUR
CB-3	CERAMIC BATTENS: EXTERNAL SCREENS CHARCOAL COLOUR
CD-1	METAL WALL CLADDING PANELS MID GREY COLOUR
CD-2	METAL WALL CLADDING PANELS ZINC COLOUR
CD-3	METAL WALL CLADDING PANELS COPPER COLOUR
CD-4	METAL WALL CLADDING PANELS CHARCOAL COLOUR
CD-5	CERAMIC TILE: WALL CLADDING PANELS WARM GREY COLOUR
CD-6	CERAMIC TILE: WALL CLADDING PANELS CHARCOAL COLOUR, PROFILE 1
CD-7	CERAMIC TILE: WALL CLADDING PANELS CHARCOAL COLOUR, PROFILE 2
CD-8	CERAMIC TILE: WALL CLADDING PANELS CHARCOAL COLOUR WITH GLAZED FINISH
T-1	TIMBER WALL CLADDING
CONC-1.1	OFF FORM CONCRETE OFF WHITE COLOUR
CONC-1.2	OFF FORM CONCRETE WARM GREY COLOUR
CONC-1.3	OFF FORM CONCRETE LIGHT GREY COLOUR
W-1	ALUMINIUM FRAMED WINDOW WITH CLEAR GLASS NATURAL ANODISED COLOUR
W-2	ALUMINIUM FRAMED WINDOW WITH CLEAR GLASS NATURAL ANODISED COLOUR
W-3	COLOURBACK GLASS SYSTEM
W-EX	EXISTING WINDOW & GLAZED DOOR
AW-1	RETRACTABLE FABRIC AWNING
AW-EX	EXISTING GLAZED AWNING
ST-EX	EXISTING SANDSTONE CLADDING
SR-1	METAL ROOF SHEETING CHARCOAL WITH COLOUR
BAL-1	GLAZED BALUSTRADE WITH STAINLESS STEEL SUPPPORTS





1



2



3



4



5



6



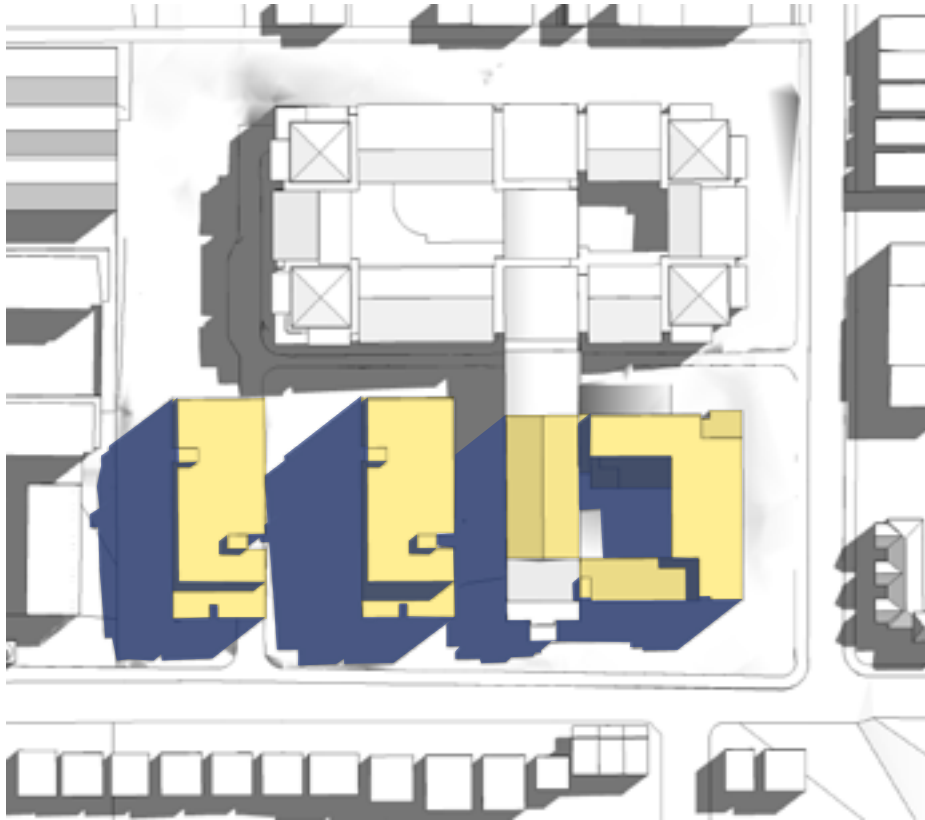
7



8

MATERIAL LEGEND - BLOCK E & F

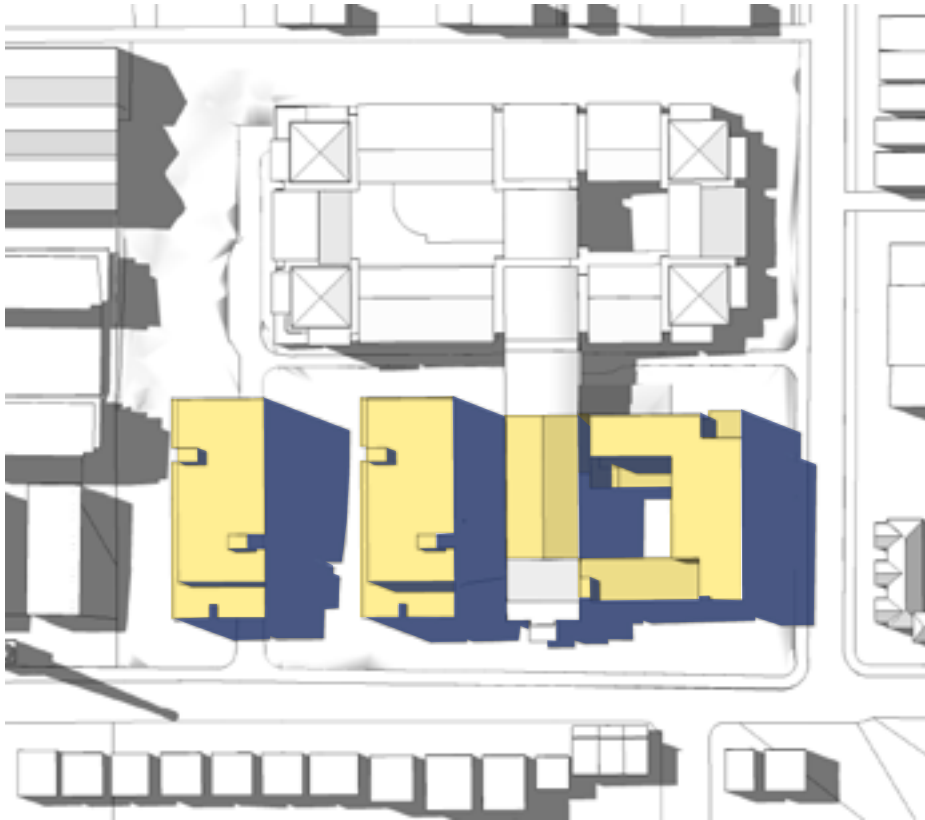
- 1 METAL WALL CLADDING  
MID GREY COLOUR
- 2 GLAZED BALUSTRADE  
WITH METAL SUPPORTS
- 3 PLANTER BOXES  
ALONG VARYING RECESSES ON FACADE
- 4 TIMBER WALL CLADDING  
CLEAR, NATURAL FINISH
- 5 TERRACOTTA BATTENS  
EXTERNAL SCREENING
- 6 OFF FORM CONCRETE  
OFF WHITE AND WARM GREY COLOURED
- 7 CERAMIC TILE  
WALL CLADDING PANELS
- 8 ALUMINIUM FRAMED WINDOWS  
CHARCOAL COLOUR FRAMES



MARCH 21, 9AM



MARCH 21, 12 NOON



MARCH 21, 3PM

- LEGEND:
- PROPOSED RESIDENTIAL AGED CARE
  - PRPOSED RESIDENTIAL AGED CARE SHADOWS



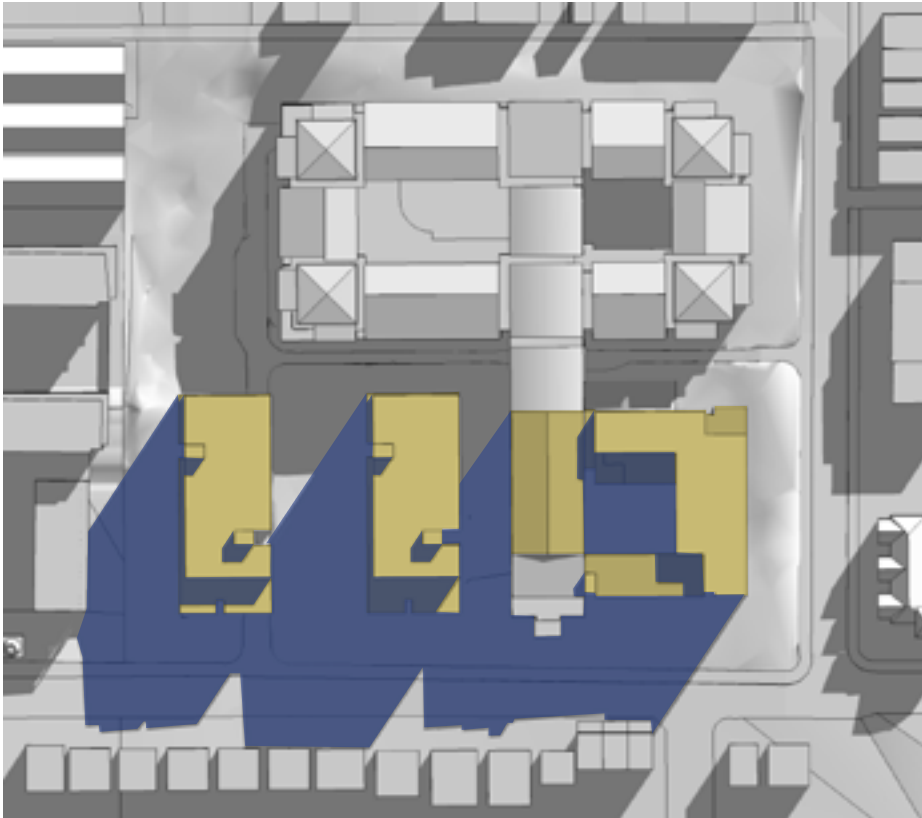
0 10 20 30metres  
SCALE 1:750

SHADOW ANALYSIS

**JACKSON TEECE**

Nominated Architect Ian Brodie (4275)

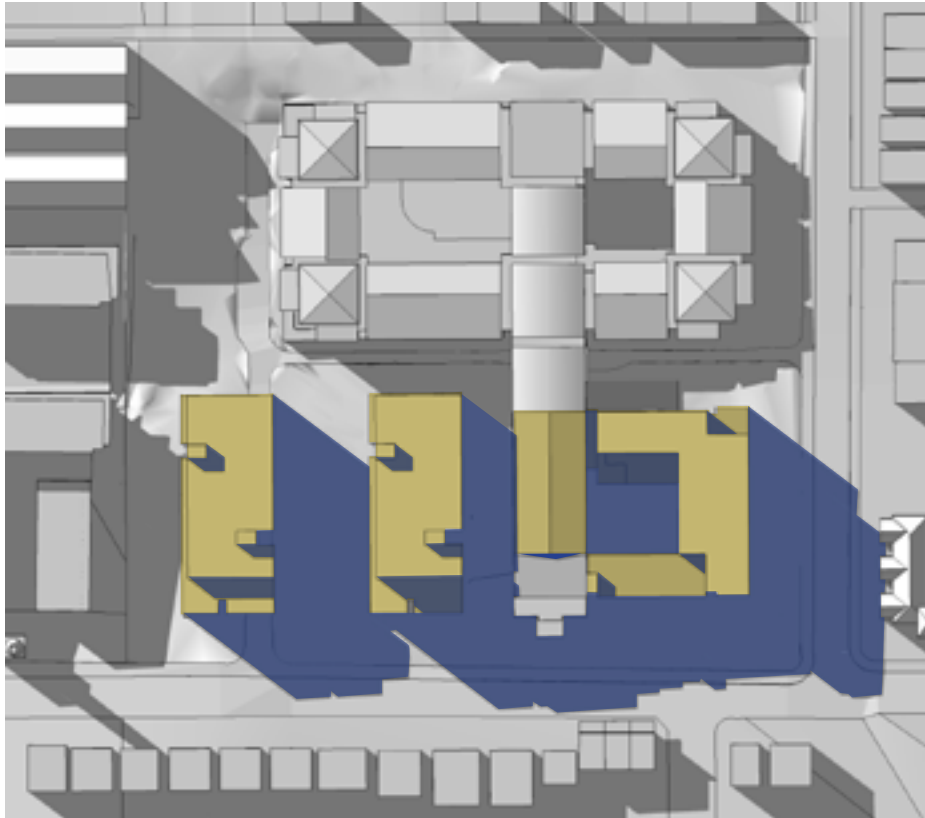




JUNE 21, 9AM



JUNE 21, 12 NOON



JUNE 21, 3PM



PERSPECTIVE: CENTENNIAL APARTMENTS  
JUNE 21, 9AM



PERSPECTIVE: CENTENNIAL APARTMENTS  
JUNE 21, 9:00AM



PERSPECTIVE: CENTENNIAL APARTMENTS  
JUNE 21, 9:15AM



PERSPECTIVE: CENTENNIAL APARTMENTS  
JUNE 21, 9:30AM

LEGEND:  
PROPOSED RESIDENTIAL  
AGED CARE  
PRPOSED RESIDENTIAL  
AGED CARE SHADOWS



0 10 20 30metres  
SCALE 1:750

SHADOW ANALYSIS

**JACKSON TEECE**

Nominated Architect Ian Brodie (4275)