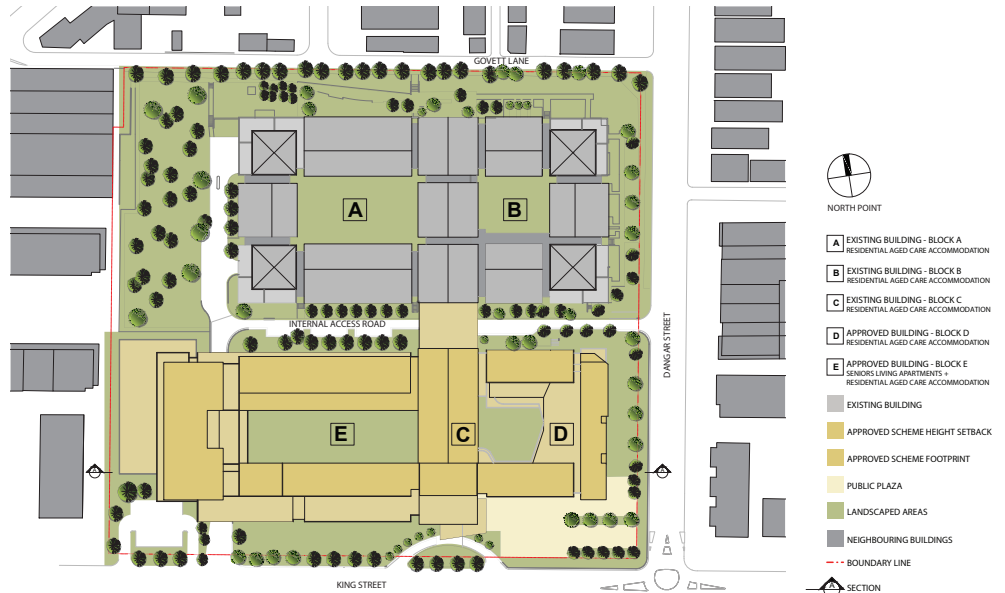


Facilities and Uses

Approved Scheme

- Total of 232 residential aged care accommodation
- Total of 36 Seniors Living Apartments
- Approximate landscaped area of 11,944m² with enclosed courtyards
- Approximate Public Plaza area 1,250m²

SITE PLAN – 2011: Original Concept Plan



Proposed Scheme

- Total of 117 residential aged care accommodation
- Total of 95 Seniors Living Apartments
- Approximate landscaped area of 13,530m² with open communal areas between building masses
- Approximate Public Plaza area: 1,271m²
- Childcare is relocated towards King St to allow for additional units on Lower Ground Level and provides privacy for units above.

SITE PLAN – 2015: Revised Concept Plan



For more information or to lodge questions or feedback:

☎ 1800 266 901

✉ montefiore@urbis.com.au

Look out for the next community newsletter