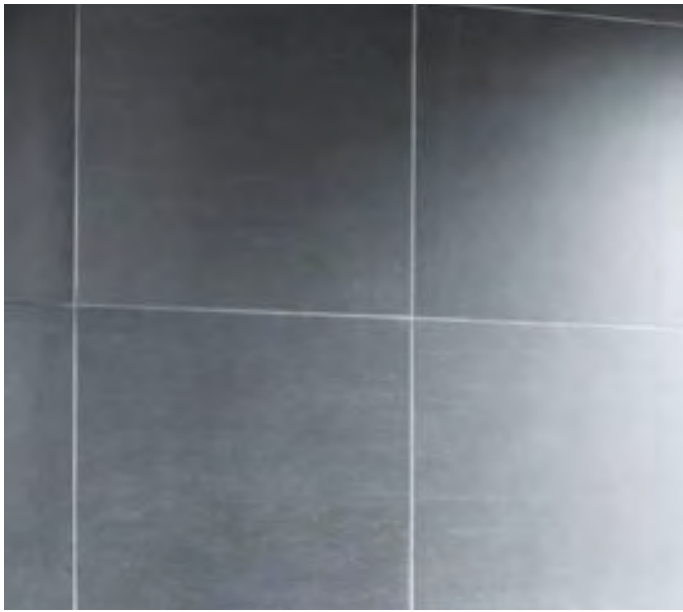




WALL TYPE 1 - SANDSTONE CLAD WALL



PAVEMENT TYPE 1 - CHARCOAL TILE



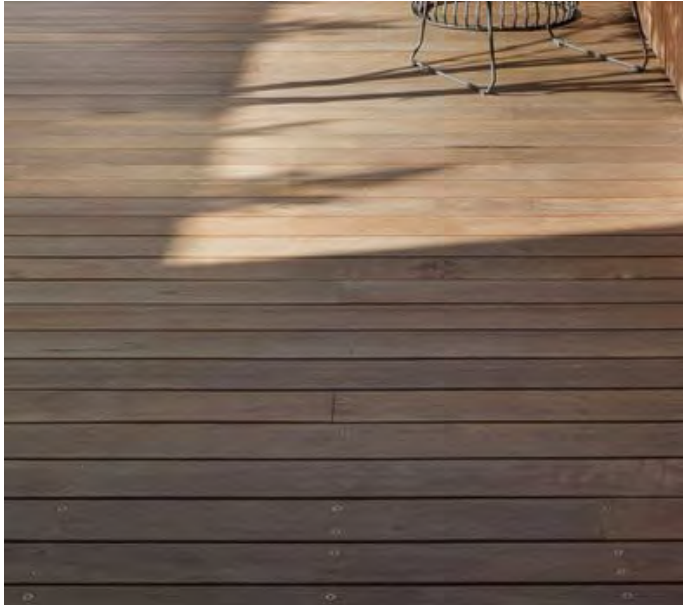
BENCH TYPE 1 - TIMBER BENCH



STREET LIGHTING



WALL TYPE 2 - RENDERED AND PAINTED WALL



PAVEMENT TYPE 2 - TIMBER DECK



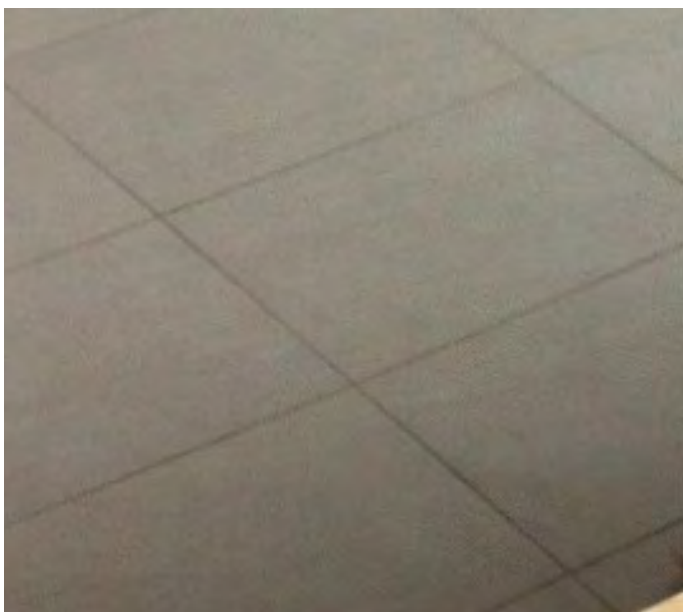
TABLE TYPE 1 - TIMBER TABLE



POLE TOP LUMINAIRE



WALL TYPE 3 - SANDSTONE CLAD SEATING WALL



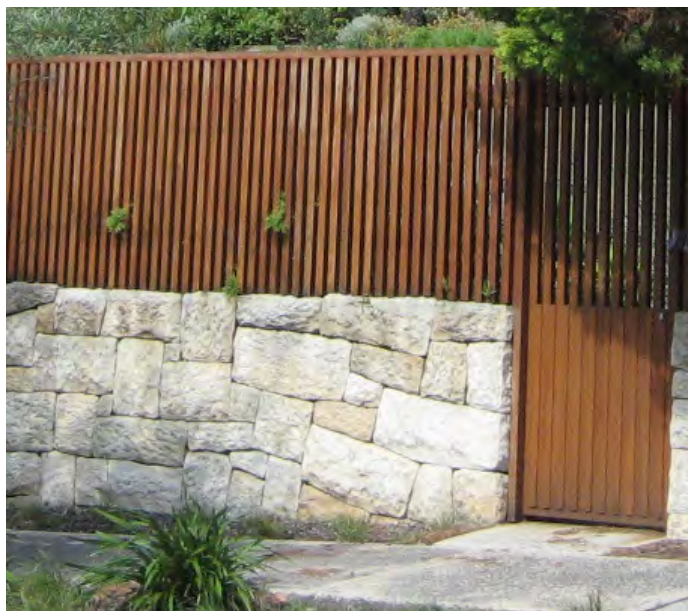
PAVEMENT TYPE 3 - TILE



BOLLARD - CONCRETE SPHERE



BOLLARD LIGHT



WALL TYPE 4 - SANDSTONE CLAD WALL WITH TIMBER BATTEN SCREEN ABOVE



PAVEMENT TYPE 4 - GRANITE PAVER



BIN - RUBBISH BIN



RECESSED WALL LIGHT



FENCE TYPE 1 - VERTICAL TIMBER BATTEN SCREEN/BALUSTRADE



PAVEMENT TYPE 5 - PORPHYRY COBBLE



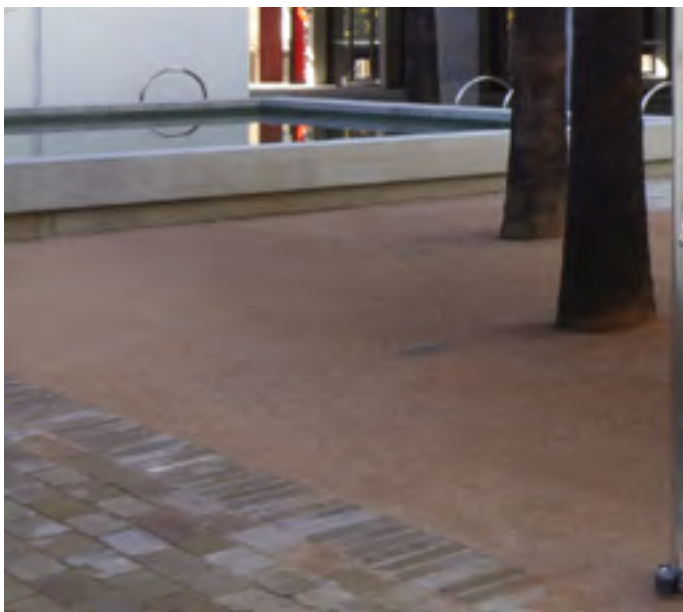
BBQ - BUILT IN BBQ AND BENCH



LANDSCAPE UP LIGHT



FENCE TYPE 2 - TIMBER LAPPED AND CAPPED BOUNDARY FENCE PAINTED



PAVEMENT TYPE 6 - DECOMPOSED GRANITE



WATER FEATURE 1 - REFLECTIVE POND WITH METAL EDGE



COLOURED UP LIGHT

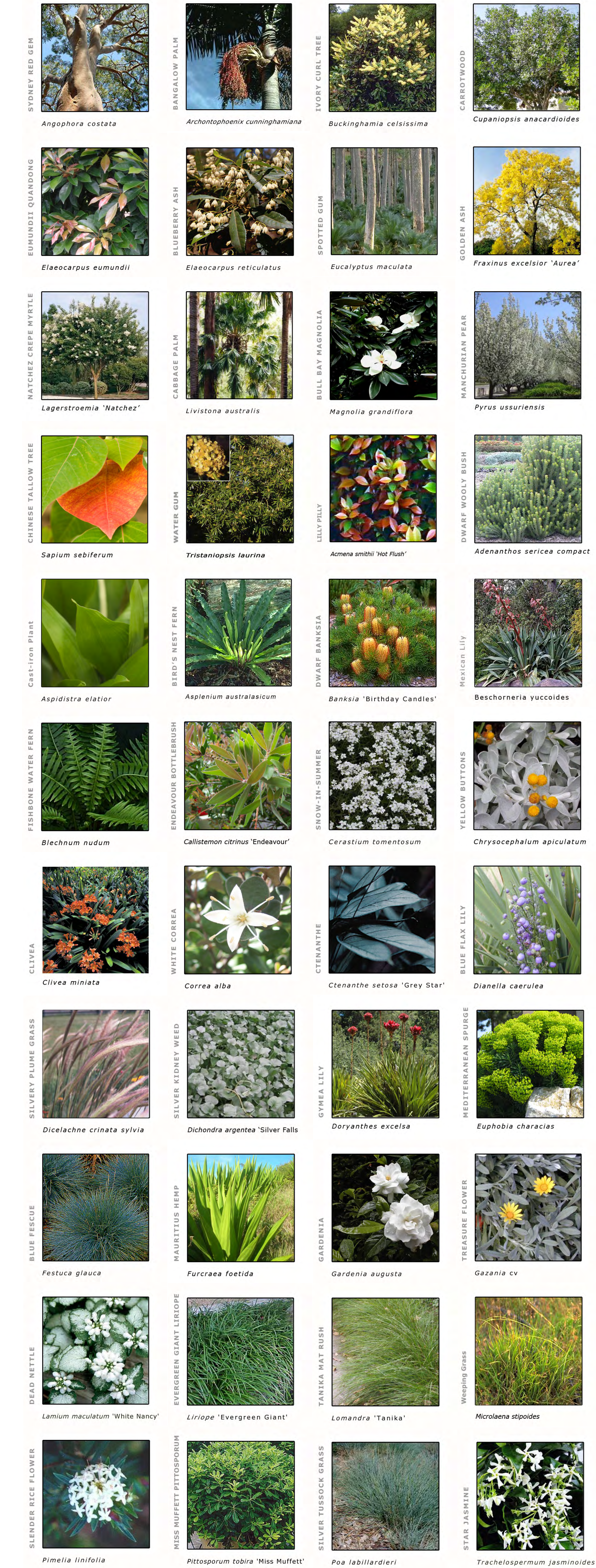


BALUSTRADE - METAL BALUSTRADE



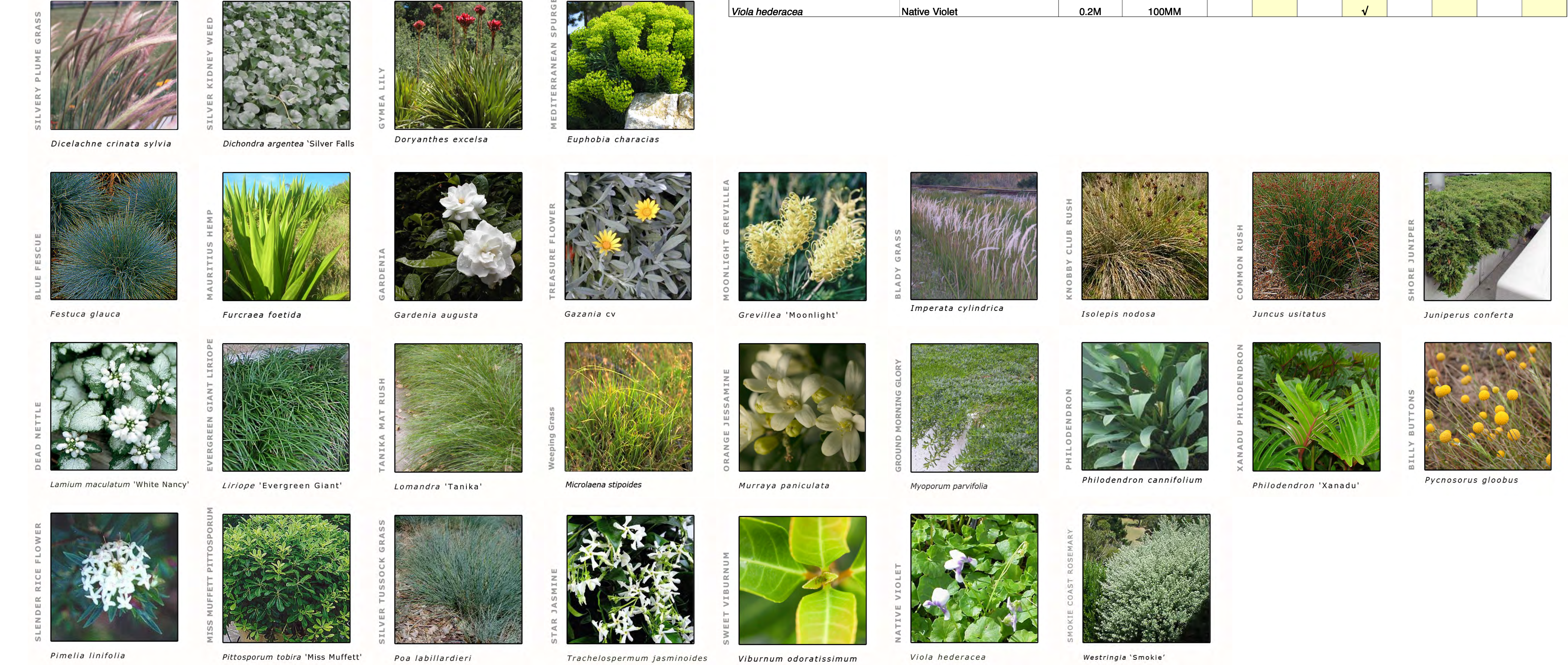
WATER FEATURE 2 - REFLECTIVE POND WITH METAL EDGE

REV:	DATE:	DOCUMENT STATUS/ AMENDMENTS	REFER TO LA LP 000 FOR GENERAL NOTES AND LEGEND REFER TO LA LP 201 FOR PLANT SCHEDULE	<div><div><div><div><div></div><div></div><div></div></div><div>black beetle</div><div>.....</div><div>Landscape Architecture and Design</div></div><div><div>Black Beetle pty ltd</div><div>63 Stella Street, Collaroy Plateau NSW 2097</div><div>Tel: 0422 104 416</div><div>email: blackbeetle@blackbeetle.com.au</div></div></div></div>	PROJECT	Drawn GB Architect Authorised IK /GB	Date 07.10.15 Scale 1:200 @ A1 Status
A	11.12.15	For DA			Residential Apartments Meadowbank Stages 2-3 Rothsney & Nancarrow Ave, Shepherds Bay	Client Shepherds Bay Urban Developments pty ltd	Development Application
						DO NOT SCALE OFF THIS DRAWING. USE FIGURED DIMENSIONS ONLY. VERIFY ALL DIMENSIONS ON SITE. RESOLVE DISCREPANCIES WITH BLACK BEETLE BEFORE PROCEEDING. COPYRIGHT OF THIS DRAWING AND THE DESIGNS EXECUTED HEREIN VESTED IN BLACK BEETLE	
						DRAWING TITLE	
						Material Palette	JOB NUMBER BB 1126 DRAWING NUMBER / ISSUE LA LP 202 /A



PLANT SCHEDULE

BOTANICAL NAME	COMMON NAME	HEIGHT	POT SIZE	Mix 01	Mix 02	Mix 03	Mix 04	Mix 05	Mix 06	Mix 07	Mix 08
NATIVE TREES											
<i>Angophora costata</i>	Smooth Barked Apple	15M	100L								
<i>Archontophoenix cunninghamiana</i>	Bangalow Palm	15M	3-7M trunk								
<i>Corymbia citriodora</i> 'Scentuous'	Lemon Scented Gum	8M	100L								
<i>Corymbia maculata</i>	Spotted Gum	20M	100L								
<i>Cupaniopsis anacardioides</i>	Tuckeroo	8M	100L								
<i>Elaeocarpus eumundii</i>	Native Quandong	10M	200L								
<i>Elaeocarpus reticulatus</i>	Blueberry Ash	8M	200L								
<i>Fraxinus excelsior</i> 'Aurea'	Golden Ash	15M	400L								
<i>Howea forsteriana</i>	Kentia Palm	12M	3-5M trunk								
<i>Lagerstroemia indica</i>	Crepe Myrtle	5M	100								
<i>Livistona australis</i>	Cabbage Tree Palm	15M	5-7M trunk								
<i>Magnolia grandiflora</i>	Bull Bay Magnolia	20M	400L								
<i>Magnolia</i> 'Little Gem'	Little Gem Magnolia	6M	100L								
<i>Pyrus lauriei</i> 'Westwood'	Korean Sun	5M	100L								
<i>Pyrus ussuriensis</i>	Manchurian Pear	9M	100L								
<i>Triadica sebifera</i>	Chinese Tallowwood	10M	200L								
<i>Tristaniopsis laurina</i>	Water Gum	8M	200L								
SHRUBS AND CLIMBERS											
<i>Acmena</i> 'Firescreen'	Firescreen Lily pily	4M	300MM				✓				✓
<i>Adenanthos sericeus</i> 'compact'	Dwarf Woolly Bush	1.2M	200MM		✓						✓
<i>Asplenium australasicum</i>	Birds Nest Fern	1.2M	200MM					✓			
<i>Banksia</i> 'Birthday Candles '	Birthday Candles banksia	0.6M	200MM		✓		✓				
<i>Beschomeria yuccoides</i>	Mexican Lily	1M	200MM		✓						
<i>Buckinghamiana celsissima</i>	Ivory Curl Flower	4M	75L		✓		✓				✓
<i>Callistemon citrinus</i>	Crimson Bottlebrush	2.5M	300MM								✓
<i>Clivea miniata</i>	White Correa	1.5M	200MM							✓	✓
<i>Correa alba</i>	Clivea	0.6M	200MM					✓		✓	✓
<i>Ctenanthe</i> 'Grey Star'	Grey star Ctenanthe	0.8M	200MM					✓			
<i>Doryanthes excelsa</i>	Gymea Lily	2M	300MM				✓	✓		✓	
<i>Euphorbia wulfenii</i>	Mediterranean Spurge	1M	200MM				✓				
<i>Furcraea foetida</i>	Mauritius Hemp	2M	300MM				✓				
<i>Gardenia augusta</i>	Gardenia	1M	200MM		✓		✓	✓	✓		
<i>Grevillea linearifolia</i>	White Spider Flower	2M	200MM								✓
<i>Juniperus conferta</i>	Shore Juniper	0.4M	100MM				✓		✓		
<i>Murraya paniculata</i>	Orange Jesamine	4M	300MM				✓				
<i>Philodendron cannifolium</i>	Philodendron	1M	200MM		✓			✓			
<i>Philodendron</i> 'Xanadu'	Xanadu	0.8M	200MM		✓		✓	✓			
<i>Pimelia linifolia</i>	Rice Flower	2M	300MM								✓
<i>Pittosporum</i> 'Miss Muffet'	Miss Muffet Pittosporum	1M	200MM		✓		✓		✓		
<i>Trachelospermum jasminoides</i>	Star Jasmine	3M	200MM				✓	✓			
<i>Viburnum odoratissium</i>	Sweet Viburnum	3M	300MM		✓		✓				
<i>Westringia fruticosa</i>	Coastal Rosemary	2M	200MM								✓
GRASSES & GROUND COVERS											
<i>Aspidistra elatior</i>	Cast Irion Plant	0.8M	200MM		✓			✓			
<i>Baumea juncea</i>	Bare Twig Rush	1M	150MM				✓				
<i>Blechnum nudum</i>	Fishbone Fern	0.5M	200MM					✓			
<i>Cerastium tomentosum</i>	Snow-in-Summer	0.3M	150MM		✓		✓				
<i>Chrysocephalum apiculatum</i>	Yellow Buttons	0.3M	150MM		✓						
<i>Dianella caerulea</i> 'Breeze'	Dianella Breeze	0.8M	tube - 100MM		✓		✓			✓	
<i>Dichelachne mcrantha</i>	Plume Grass	0.8M	150MM				✓			✓	
<i>Dichondra</i> 'Silver Falls'	Silver Falls Kidney Weed	0.1M	150MM				✓				
<i>Festuca glauca</i>	Blue Fescue	0.3M	150MM	✓						✓	
<i>Ficinia nodosa</i>	Knobby Club Rush	0.8M	150MM	✓			✓			✓	
<i>Gazania tomentosum</i>	Treasure Flower	0.3M	150MM				✓				✓
<i>Grevillea</i> 'Gold Cluster'	Gold Cluster Grevillea	0.4M	150MM	✓							✓
<i>Imperata cylindrica</i>	Blady Grass	1M	100MM				✓				
<i>Juncus usitatus</i>	Common Rush	1M	100MM				✓			✓	
<i>Lamium maculatum</i>	Spotted Deadnettle	0.1M	150MM					✓			
<i>Liriope</i> 'Evergreen Giant'	Lily Turf	0.4M	150MM				✓	✓			
<i>Lomandra filiformis</i>	Wattle Matt Rush	0.6M	150MM				✓				
<i>Lomandra longifolia</i> 'Tanika'	Tanika	0.6M	150MM	✓			✓			✓	✓
<i>Lomandra longifolia</i> 'Wingarra'	Wingarra	0.8M	150MM	✓						✓	
<i>Microlaena stipoides</i>	Weeping Grass	0.3M	tube - 100MM							✓	
<i>Myoporum</i> 'Yareena'	Yareena Creeping Boobialla	0.2M	150MM	✓	✓						
<i>Poa labillardieri</i>	Tussock grass	0.8M	tube - 100MM							✓	
<i>Pycnosorus globosus</i>	Billy Buttons	0.4M	tube - 100MM							✓	
<i>Stipa scabra</i>	Speargrass	0.7M	100MM				✓			✓	
<i>Viola hederacea</i>	Native Violet	0.2M	100MM				✓				

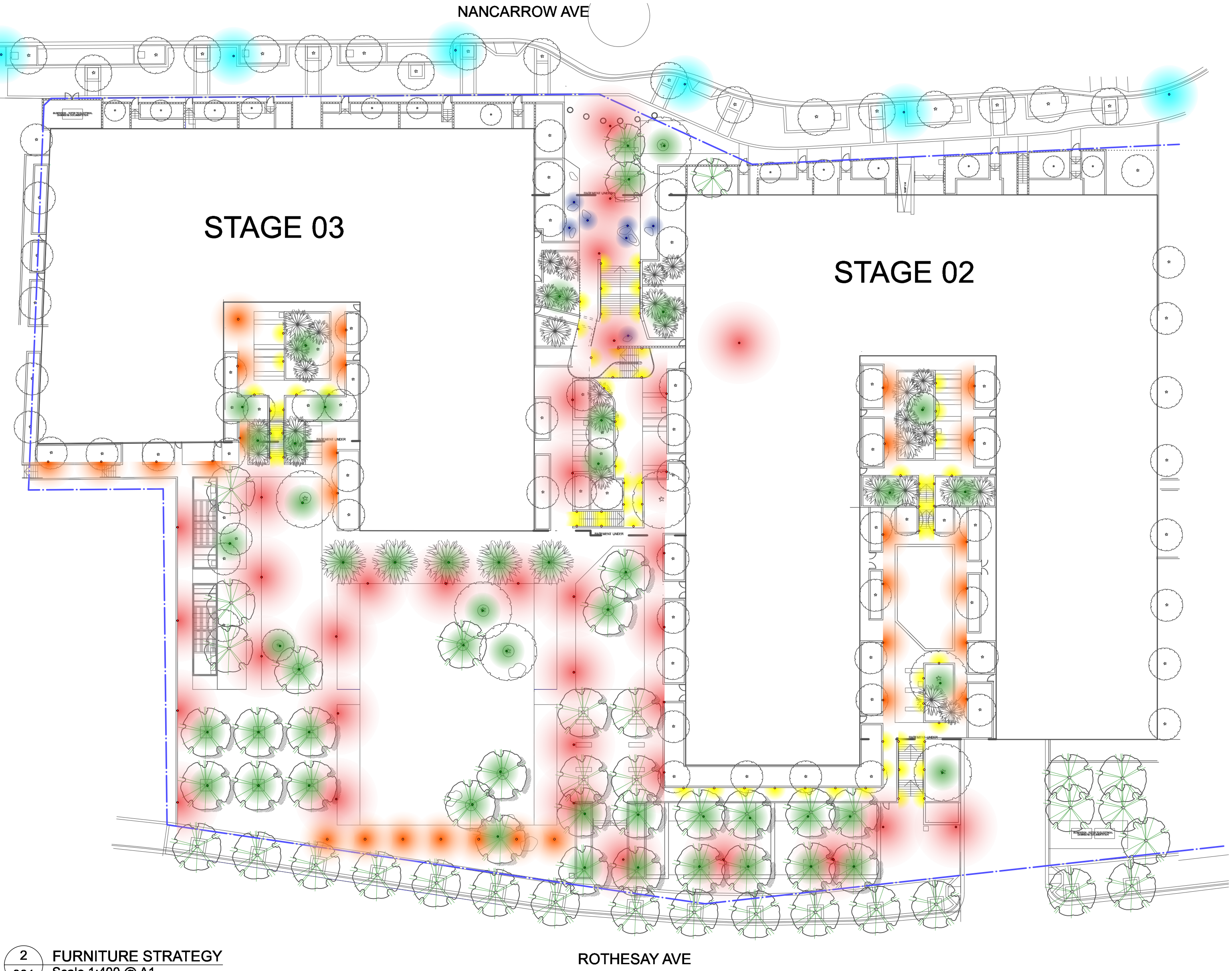


REV:	DATE:	DOCUMENT STATUS/ AMENDMENTS	REFER TO LA LP 000 FOR GENERAL NOTES AND LEGEND	<div><div><div>• • •</div><div>black beetle</div><div>Landscape Architecture and Design</div></div><div>Black Beetle pty ltd 63 Stella Street, Collaroy Plateau NSW 2097 Tel: 0422 104 416 email: blackbeetle@blackbeetle.com.au</div></div>	PROJECT	Drawn GB Architect Authorised IK /GB	Date 07.10.15
A	11.12.15	For DA			Residential Apartments Meadowbank Stages 2-3 Rothesay & Nancarrow Ave, Shepherds Bay	Scale 1:200 @ A1	Status Development Application
					DRAWING TITLE Plant Palette & Schedule	JOB NUMBER BB 1126	DRAWING NUMBER / ISSUE LA LP 201 /A
						DO NOT SCALE OFF THIS DRAWING - USE FIGURED DIMENSIONS ONLY - VERIFY ALL DIMENSIONS ON SITE - RESOLVE DISCREPANCIES WITH BLACKBEETLE BEFORE PROCEEDING. COPYRIGHT © THE DRAWING AND THE DESIGN IS DEEMED TO BE THE PROPERTY OF BLACKBEETLE	



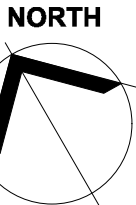
- FURNITURE KEY**
- TIMBER BENCH SEAT (B-1) - BOTTON AND GARDINER 'PARALLEL 42 BENCH' HARDWOOD TIMBER BATTENS OVER ANODISED ALUMINUM FRAME. 450W X 450H X VARIOUS LENGTH
 - WALL TYPE 3 (W3) - SANDSTONE CLADDING OVER BLOCK WALL 300-500W X 500H SEATING WALL
 - TIMBER TABLE (T-1) - BOTTON AND GARDINER 'VERGE TABLE' HARDWOOD TIMBER BATTENS OVER 316 STAINLESS STEEL FRAME.
 - CAFE STYLE TABLES AND CHAIRS OUTSIDE CAFE
 - BIN - HUB STREET EQUIPMENT S203 DOUBLE BIN
 - BOLLARD (BOL) - 'DENLIZ TRADING' CONCRETE SPHERICAL BOLLARD 750 DIA.
 - BBQ - CHRISTIE PARKSAFE LARGE BRICKWORK BENCH WITH 2 BBQ'S. WITH BLOCKWORK SURROUND RENDERED AND PAINTED.

1 FURNITURE STRATEGY
301 Scale 1:400 @ A1



- LIGHTING KEY**
- STREET LIGHTING REXEL OPTISPAN AEROSCREEN LUMINAIRES MOUNTED ON 9.8M MULTI-FUNCTION POLE TO COUNCILS REQUIREMENTS. REFER TO LA LP 202 FOR IMAGE
 - POLE TOP LUMINAIRE 360° BEGA 8081 LUMINAIRE ON 4.8M SMARTPOLE DIRECTIONAL OUTPUT 360°. REFER TO LA LP 202 FOR IMAGE
 - POLE TOP LUMINAIRE 180° BEGA 8081 LUMINAIRE ON 4.8M SMARTPOLE DIRECTIONAL OUTPUT 180°. REFER TO LA LP 202 FOR IMAGE
 - BOLLARD LIGHT 360° BEGA - ALUMET CLASSIC COLUMN LIGHT FLANGE MOUNTED ON 3M COLUMN. REFER TO LA LP 202 FOR IMAGE
 - BOLLARD LIGHT 180° BEGA - ALUMET CLASSIC COLUMN LIGHT FLANGE MOUNTED ON 3M COLUMN WITH ALUMET LAMP SHIELD 180° SQUARE. REFER TO LA LP 202 FOR IMAGE
 - WALL LIGHTS - RECESSED WALL LIGHT TO PROVIDE LOW LEVEL PATHWAY LIGHTING. SUPERLIGHT SL 3596 EXTERIOR LED WALL LIGHT. REFER TO LA LP 202 FOR IMAGE
 - UP LIGHTS - FEATURE UPLIGHTING TO TREES SUPERLIGHT SL 6465 LED LANDSCAPE FIXTURE. REFER TO LA LP 202 FOR IMAGE
 - UP LIGHTS - FEATURE COLOURED UPLIGHTING TO PUBLIC ART ELEMENTS SUPERLIGHT SL 3163 NEPTUNE IN GROUND LED UPLIGHT. SUPERLIGHT SL 3255 SURFACE MOUNT UNDERWATER LIGHT. REFER TO LA LP 202 FOR IMAGE

2 FURNITURE STRATEGY
301 Scale 1:400 @ A1

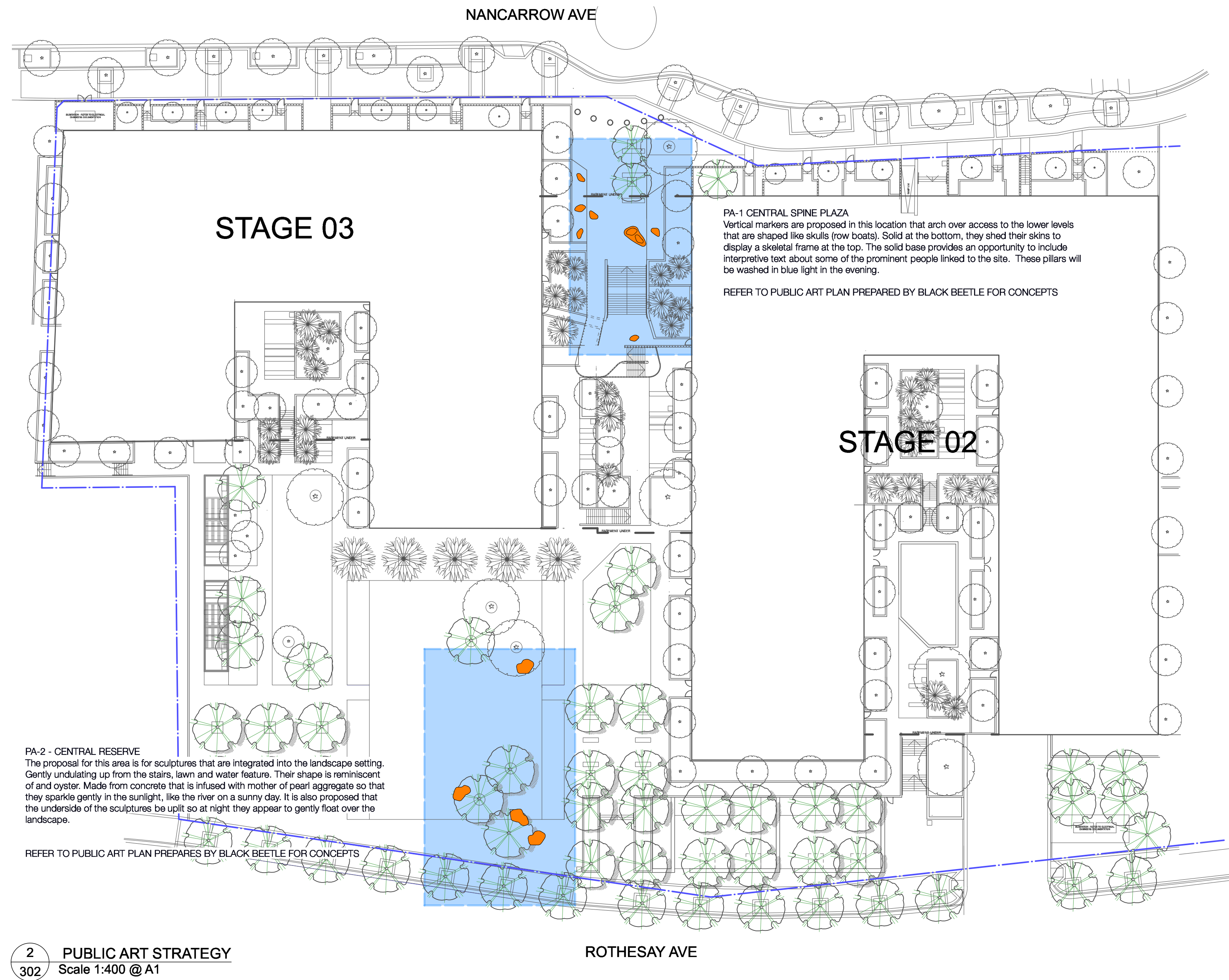
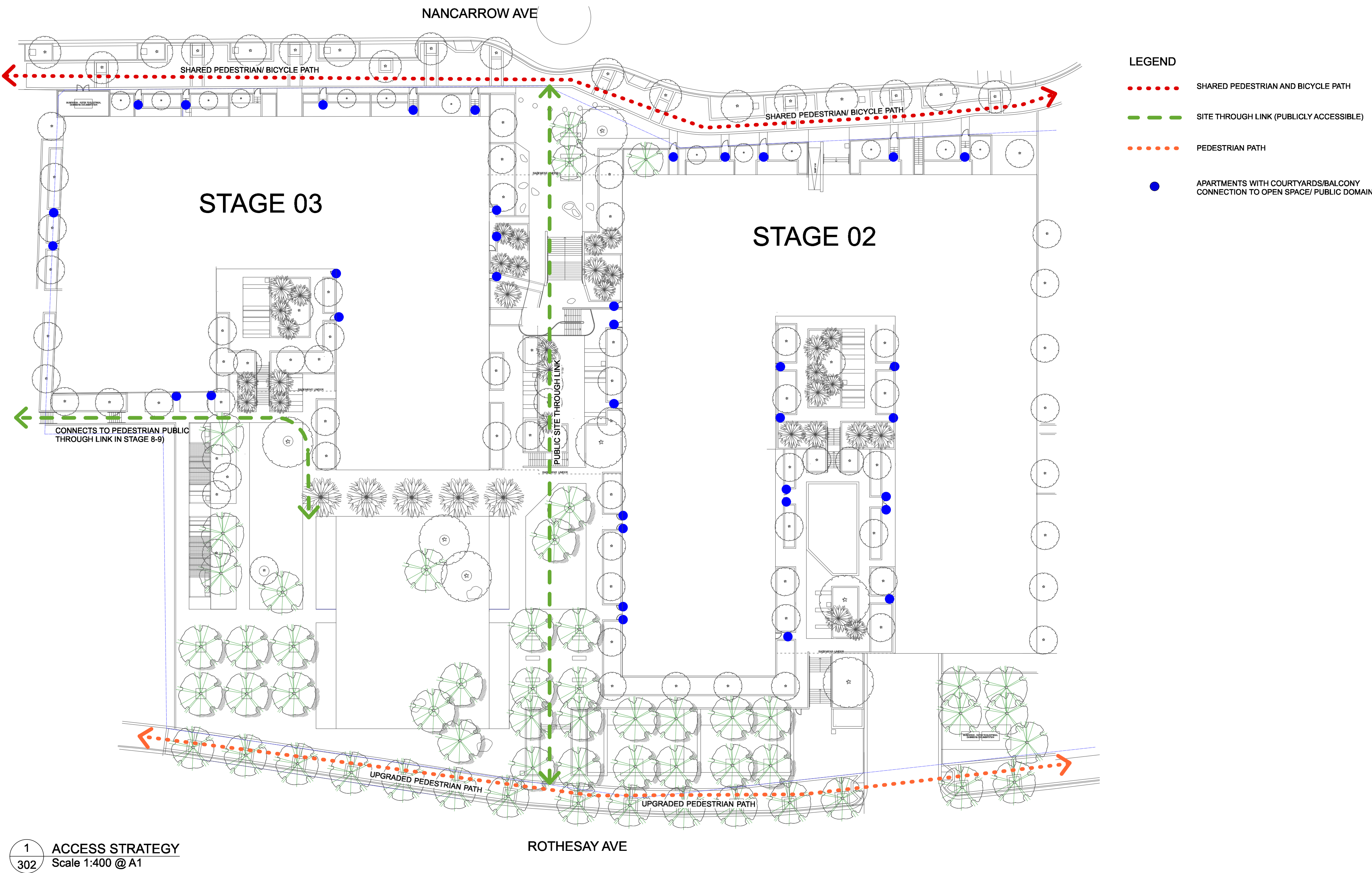


REV:	DATE:	DOCUMENT STATUS/ AMENDMENTS
A	11.12.15	For DA

• • • black beetle
Landscape Architecture and Design
Black Beetle Pty Ltd
63 Stella Street, Collaroy Plateau NSW 2097
Tel: 0422 104 416
email: blackbeetle@blackbeetle.com.au

PROJECT
Residential Apartments Meadowbank Stages 2-3 Rothesay & Nancarrow Ave, Shepherds Bay
DRAWING TITLE
Furniture and Lighting Strategy

Drawn GB	Date 07.10.15
Architect Authorised IK /GB	Scale 1:400 @ A1
Client Shepherds Bay Urban Developments Pty Ltd	Status Development Application
JOB NUMBER BB 1126	DRAWING NUMBER / ISSUE LA LP 301 /A



REV:	DATE:	DOCUMENT STATUS/ AMENDMENTS
A	11.12.15	For DA

• • • black beetle
Landscape Architecture and Design
Black Beetle pty ltd
63 Stella Street, Collaroy Plateau NSW 2097
Tel: 0422 104 416
email: blackbeetle@blackbeetle.com.au

PROJECT
Residential Apartments
Meadowbank Stages 2-3
Rothsay & Nancarrow Ave, Shepherds Bay
DRAWING TITLE
Access and Public Art Strategies

Drawn GB	Date 07.10.15
Architect Authorised IK /GB	Scale 1:400 @ A1
Client Shepherds Bay Urban Developments pty ltd	Status Development Application
DO NOT SCALE OFF THIS DRAWING - USE DIMENSIONS ONLY - VERIFY ALL DIMENSIONS ON SITE. RESOLVE DISCREPANCIES WITH BLACK BEETLE BEFORE PROCEEDING. COPYRIGHT OF THE DRAWING AND THE DESIGN IS RESERVED BY BLACK BEETLE	
JOB NUMBER BB 1126	DRAWING NUMBER / ISSUE LA LP 302 /A