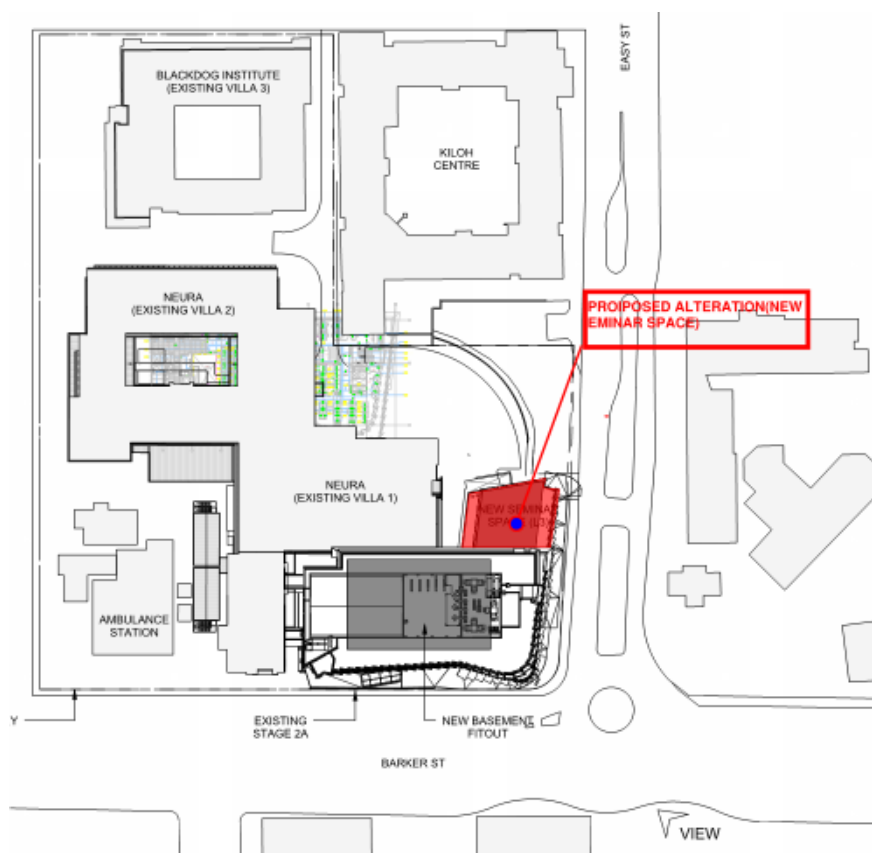


29/01/2016

151740PA

## Stormwater Management Statement for the proposed Neuroscience Research Stage 2A alteration

This stormwater design statement is prepared in support of the proposed Neuroscience Research Stage 2A alteration which involves 2 additional levels as seminar spaces over an existing structure. Figure 1 shows the location and extent of the proposed alteration in plan.



**Figure 1.0 : Proposed Alteration works plan**

The proposed alteration is located within a catchment that currently drains to an existing water quality unit device and an on-site detention(OSD) system as shown in figure 2. The roof catchment area does not change with this additional form.

Structural

Civil

Traffic

Facade

Engineers

### TTW Group

#### Directors

RT Green BE Hons MEngSc FIE Aust  
 D Carolan BE Hons MEngSc MIEAust  
 R Mackellar BE Hons MIEAust  
 B Young BE Hons MIEAust  
 M Eddy BE Hons MIEAust  
 R McDougall BE MIEAust

#### Technical Directors

P Yannoulatos BE Hons ME MIEAust Dip LGE MIEAust  
 D Genner BE Hons MIEAust  
 S Brain BE Hons MIEAust  
 D Jeffree BE MIEAust  
 N Burdon BE Hons ME MIEAust MIPENZ  
 H Nguyen BScEng MIEAust  
 R Pratikna BE MConstMgt MIEAust  
 K Berry BE Hons MIEAust CPEng MIPENZ MICE

#### Associate Directors

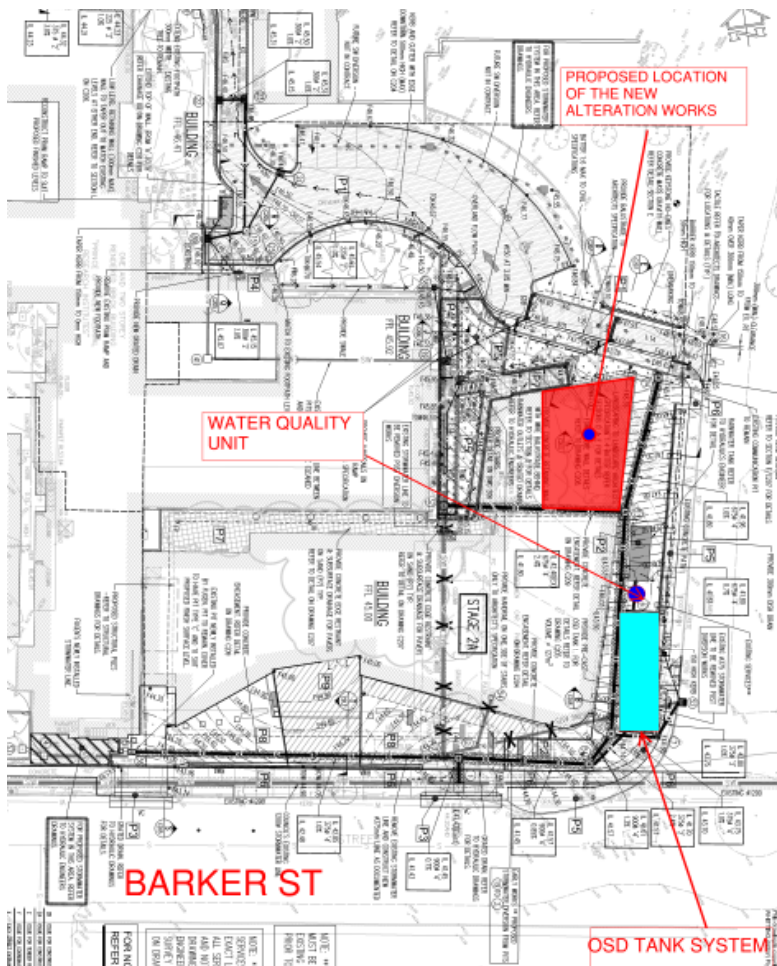
S Schuetze BE Hons MIEAust  
 M Rogers BSc Hons MIEAust  
 D Taylor BE Hons MIEAust  
 J Tropiano BE MIEAust  
 J Haling BE Hons MIEAust  
 D Mayne MEng Hons MIEAust  
 G Fowle BE Hons MIEAust  
 W Alexander BE Hons MIEAust  
 R Milsted MEng Hons MIEAust  
 N Hallam BE Hons BCom MIEAust  
 S Nixon BE Hons MIEAust

#### Associates

N Biason BE MIEAust  
 M King BE Hons MIEAust  
 J Miles BE Hons  
 G Bills BE Hons MIEAust  
 G Petschack JP  
 M Raddatz

#### Manager Facade

N McClelland BSc BE Hons MBA MIEAust



**Figure 2.0: Water Quality Unit and OSD system**

Our preliminary analysis of the roof drainage of the new works shows the downpipes can be connected to the existing water quality unit and OSD system. This is recommended to ensure the water quality discharging the site is maintained and that water quantity site discharge complies with Randwick Council's requirements.

We recommend that:

- the roof drainage of the new works is to be captured and connected to the existing water quality treatment device and OSD tank system to maintain water quality and quantity discharging the site as per existing.
- All piped system including roof drainage are to be designed in accordance with AS3500 including provision for overflow and overland flowpath during the detailed design and development of the project

Prepared by:  
**TAYLOR THOMSON WHITTING  
 (NSW) PTY LTD**

**Nemesisio Biason  
 Associate**

P:\2015\1517\151740\Reports\TTW060129\_Stormwater Statement\_nb.doc