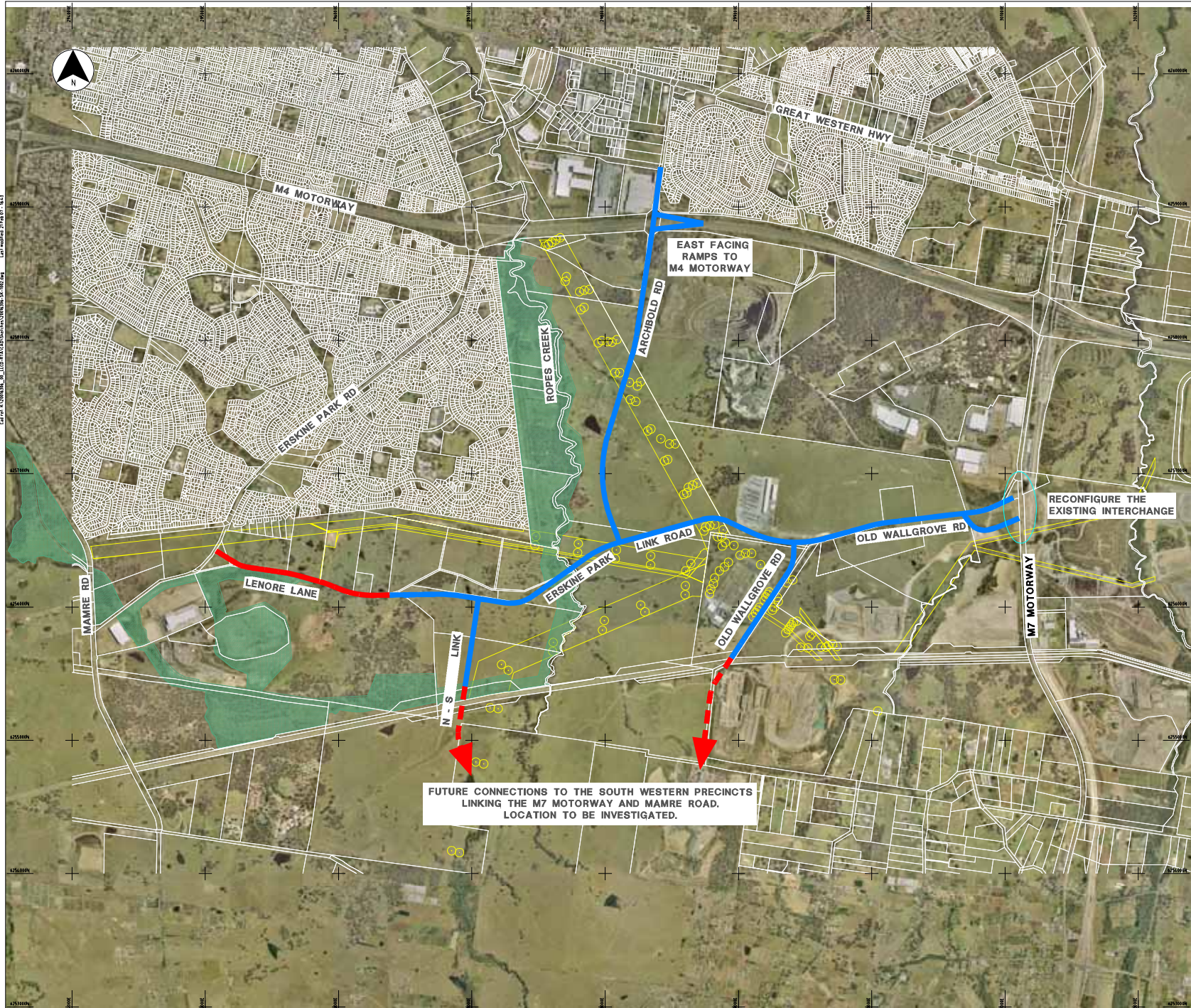


Appendix A Constraints Mapping

- Engineering Constraints Mapping
- Environmental Constraints Mapping



NOTES

- 1 REFER SECTION 2 & SECTION 3 OF WORKING PAPER 1 ROAD ALIGNMENT & CONSTRAINTS FOR FURTHER DETAILS ON CONSTRAINTS MAPPING
- 2 REFER FIGURE 1 ECOLOGICAL CONSTRAINTS FOR FURTHER ENVIRONMENTAL CONSTRAINTS MAPPING

LEGEND	
	PROPOSED ERSKINE PARK LINK ROAD NETWORK FOR NORTH WEST PRECINCTS
	FUTURE CONNECTION TO SOUTH WEST PRECINCTS
	RECENTLY CONSTRUCTED 4-LANE CARRIAGEWAY
	PROPOSED BIODIVERSITY CORRIDORS
	UTILITY EASEMENT
	ELECTRICITY PYLON AND 30m EXTENT
	PROPERTY BOUNDARY
	INTERCHANGE

© Copyright Maunsell Australia Pty Ltd 2011			
This drawing is confidential and shall only be used for the purposes of this project.			
11	MC	10/07/21	FINAL REPORT ISSUE
12	MC	15/07/21	FINAL REPORT ISSUE
13	BY	DATE	DESCRIPTION

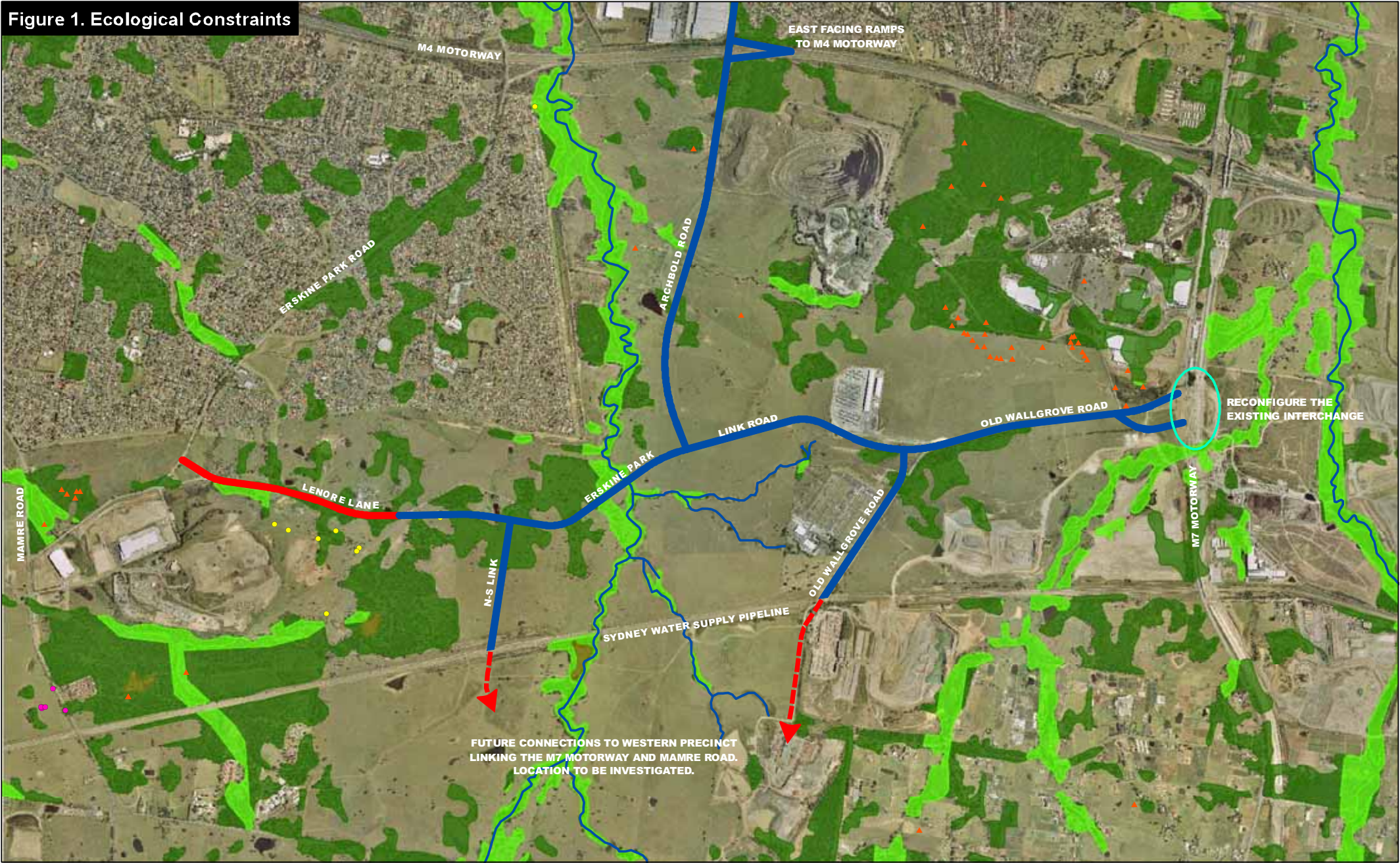
DESIGNED	IS	CHECKED	MC
DRAWN	ADW	CHECKED	MC
APPROVED	-	DATE	-

SCALES	
1:1000	1:5000
100 200 300 400 500m	1000 2000 3000 4000 5000m

MAUNSELL	AECOM
Maunsell Australia Pty Ltd ABN, 20 093 846 925	

WESTERN SYDNEY EMPLOYMENT HUB PROPOSED ERSKINE PARK LINK ROAD NETWORK AND CONSTRAINTS MAPPING	
STATUS: PRELIMINARY	DRAWING NO: 20016306-SK-1002

Figure 1. Ecological Constraints



Endangered Fauna (E1)
▲ *Meriodonum carnevirens*
Endangered Flora (E1)
● *Hypsela sessiliflora*
Vulnerable Flora (V1)
● *Grevillea juniperina* subsp. *juniperina*

Endangered Ecological Communities
■ River Flat Eucalypt Forest
■ Cumberland Plain Woodland
■ Unknown Community

Proposed Alignment
■ Proposed Road Network (40m corridor)
■ Recently Constructed 4-Lane Carriageway
■ Wetlands and watercourses

0 1 2 KM
N
Source: Maunsell (2005), DEC (2006), RTA (2006).
Note: As this map shows the location of Aboriginal Heritage sites (provided by NPWS, 2006), it is not for public display.