

KEY PLAN		
DATE	DESCRIPTION	REV
21/08/15	DRAFT PROJECT APPLICATION	A
01/04/16	PROJECT APPLICATION	B
-	-	-
-	-	-
-	-	-
-	-	-
-	-	-
-	-	-
-	-	-
-	-	-
REVISIONS		

SIR MOSES MONTEFIORE  
JEWISH HOME, RANDWICK

CLIENT

**JACKSON TEECE**

LOT 1, PIER 8-9, 23 HICKSON ROAD, WALSH BAY, NSW 2000

ARCHITECT

MONTEFIORE, RANDWICK

STAGE 2

PROJECT

PROJECT APPLICATION

PURPOSE OF DRAWING

LANDSCAPE PLAN

DRAWING TITLE



NORTH			
SCALE	1:400 @ A1	DRAWN BY	KV
DATE	01/04/2016	CHECKED BY	KL
JOB NO.	S15-032	APPROVED BY	KS
DRAWING NO.	REVISION		

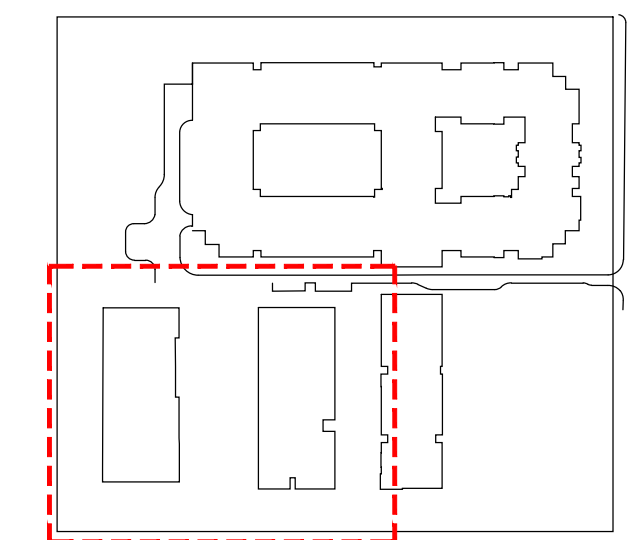
PA -L-100

B

DRAWING INFORMATION





[illegible]

SIR MOSES MONTEFIORE  
JEWISH HOME, RANDWICK

CLIENT

**JACKSON TEECE**

LOT 1, PIER 8-9, 23 HICKSON ROAD, WALSH BAY, NSW 2000

ARCHITECT

MONTEFIORE, RANDWICK  
STAGE 2

PROJECT

## PROJECT APPLICATION

## PURPOSE OF DRAWING

LANDSCAPE PLAN  
DETAIL PLAN (WEST)

DRAWING TITLE



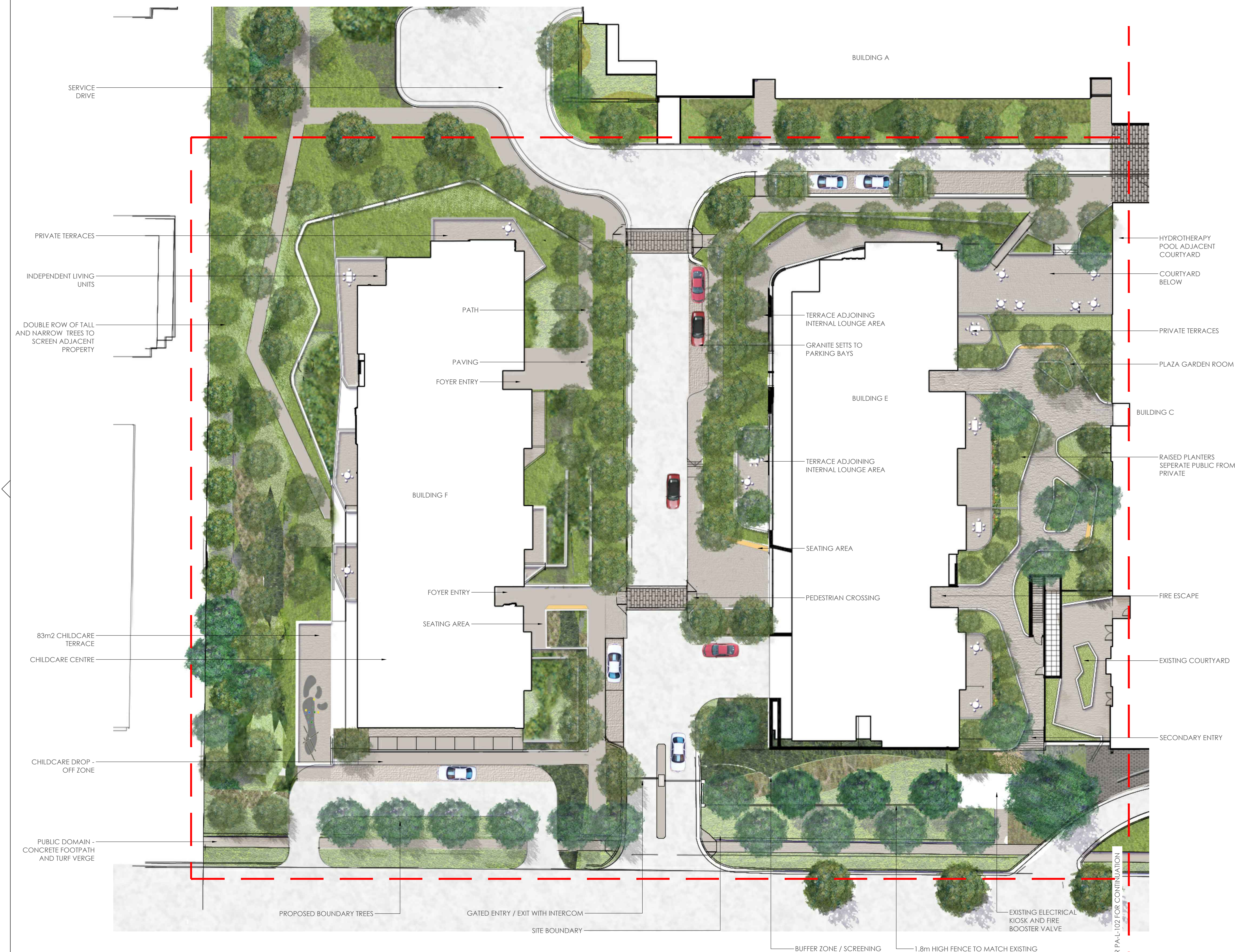
NORTH

SCALE	1:200 @ A1	DRAWN BY	KV
DATE	01/04/2016	CHECKED BY	KL
JOB NO.	S15-032	APPROVED BY	KS
DRAWING NO.			REVISION

PA -L-101

B

DRAWING INFORMATION



REFER PA-I-102 FOR CONTINUATION



OCULUS

level 1, 5 Wilson Street / Post Box 307 Newtown NSW 2042  
p 02 9557 5533 f 02 9519 8323 sydney@oculus.com.au

LANDSCAPE ARCHITECT

© OCULUS 2015 All rights reserved.

KEY PLAN

DATE	DESCRIPTION	REV
21/08/15	DRAFT PROJECT APPLICATION	A
01/04/16	PROJECT APPLICATION	B
-	-	-
-	-	-
-	-	-
-	-	-
-	-	-
-	-	-
-	-	-
-	-	-

REVISIONS

SIR MOSES MONTEFIORE  
JEWISH HOME, RANDWICK

CLIENT

JACKSON TEECE

LOT 1, PIER 8-9, 23 HICKSON ROAD, WALSH BAY, NSW 2000

ARCHITECT

MONTEFIORE, RANDWICK  
STAGE 2

PROJECT

PROJECT APPLICATION

PURPOSE OF DRAWING

LANDSCAPE PLAN  
DETAIL PLAN (EAST)

DRAWING TITLE

NORTH

SCALE	1:200 @ A1	DRAWN BY	KV
DATE	01/04/2016	CHECKED BY	KL
JOB NO.	S15-032	APPROVED BY	KS
DRAWING NO.		REVISION	

PA -L-102

B

DRAWING INFORMATION

BUILDING A

BUILDING B

BUILDING C

BUILDING D

INTERNAL STREET (ONE WAY)

DANGAR STREET

KING STREET

MAIN ENTRY TO BUILDINGS A AND B

NEW TREE PLANTING TO MATCH INTERNAL STREET - MAGNOLIA 'EXMOUTH'

EXISTING 'MONTEFIORE' SIGNAGE TO BE RETAINED

PALISADE FENCE TO MATCH EXISTING FENCE NORTH OF THE ENTRANCE WITH 1.8m HEDGE INSIDE

BUFFER PLANTING

MASS PLANTING

EXISTING STREET TREES RETAINED

RAISED PLANTER

SEATING MOUNTED ON PLANTER WALL

RAISED PLANTER LEVEL 3 COURTYARD

COURTYARD WITH 450mm HIGH RETAINING/ SEATING WALL TO OUTSIDE EDGE

RAISED PLANTER WITH NON-TOXIC GARDENESQUE PLANTING

PROPOSED WATER FEATURE

FENCE RETURNS TO BUILDING

LUSH, TEXTURED MASS PLANTING WITH HIGH CANOPY TREE PLANTING

1:20 WALKWAY

ENTRY STAIR

SCULPTURAL SCREEN

LARGE 'LOUNGE' SEAT TO TERMINATE THE DECK

ENTRY STAIR

ADDITIONAL STREET TREES TO FRAME THE SPACE

STREET TREES - PYRUS USSURIENSIS TO MATCH EXISTING IN DANGAR STREET

TRELLIS STRUCTURE ABOVE WITH CLIMBING PLANTS (Wisteria floribunda)

EXISTING STREET TREES TO BE RETAINED

PAVED PLAZA SPACE FOR RETAIL USE

GRANITE PAVING THROUGHOUT PLAZA

FEATURE PAVING

LARGE 'DINING TABLE', PUBLIC PICNIC SPACE WITH SEATING

LARGE 'DINING TABLE', PUBLIC PICNIC SPACE WITH SEATING

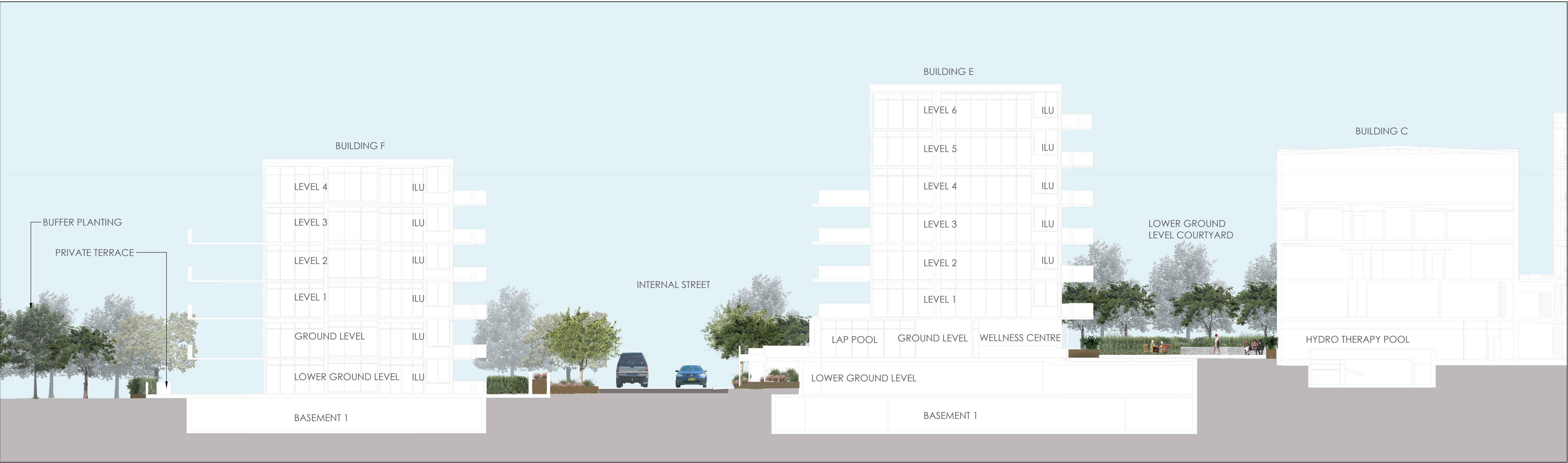
BOUNDARY

DROP OFF ZONE

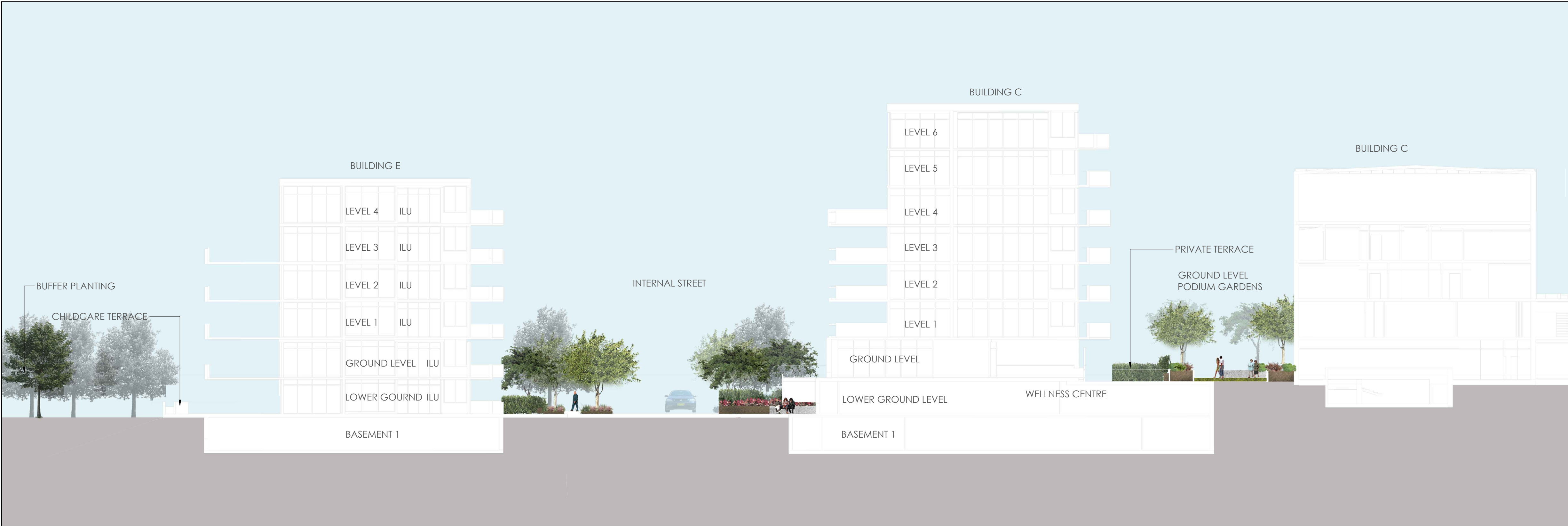
REFER PA-L-101 FOR CONTINUATION

A1





1 LANDSCAPE SECTION A  
SCALE 1:200



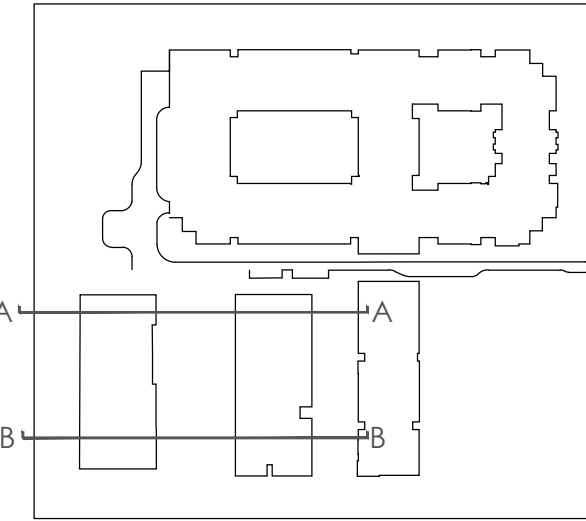
2 LANDSCAPE SECTION B  
SCALE 1:200

O C U L U S

level 1, 5 wilson street / post box 307 newtown nsw 2042  
p 02.9557.5533 f 02.9519.8323 sydney@oculus.com.au

LANDSCAPE ARCHITECT

© OCULUS 2015 All rights reserved.



KEY PLAN

DATE	DESCRIPTION	REV
21/08/15	DRAFT PROJECT APPLICATION	A
01/04/16	PROJECT APPLICATION	B
-	-	-
-	-	-
-	-	-
-	-	-
-	-	-
-	-	-
-	-	-
-	-	-

REVISIONS

SIR MOSES MONTEFIORE  
JEWISH HOME, RANDWICK

CLIENT

**JACKSON TEECE**  
LOT 1, PIER 8-9, 23 HICKSON ROAD, WALSH BAY, NSW 2000

ARCHITECT

MONTEFIORE, RANDWICK  
STAGE 2

PROJECT

PROJECT APPLICATION

PURPOSE OF DRAWING

LANDSCAPE SECTIONS  
SHEET 1

DRAWING TITLE



NORTH

SCALE	1:200 @ A1	DRAWN BY	KV
DATE	01/04/2016	CHECKED BY	KL
JOB NO.	S15-032	APPROVED BY	KS
DRAWING NO.	REVISION		

PA -L-200

B

DRAWING INFORMATION

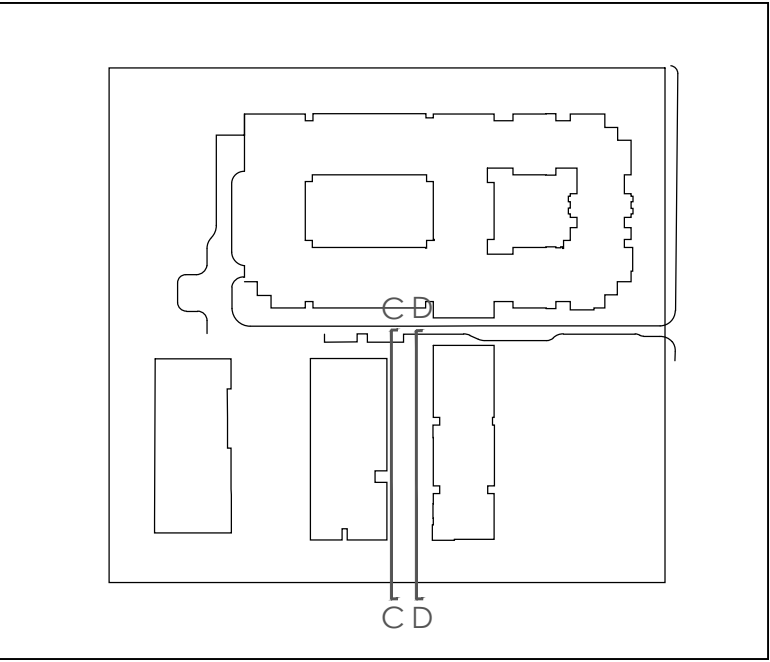




1 LANDSCAPE SECTION C  
SCALE 1:150



2 LANDSCAPE SECTION D  
SCALE 1:150



KEY PLAN

DATE	DESCRIPTION	REV
21/08/15	DRAFT PROJECT APPLICATION	A
01/04/16	PROJECT APPLICATION	B
-	-	-
-	-	-
-	-	-
-	-	-
-	-	-
-	-	-
-	-	-
-	-	-

REVISIONS

SIR MOSES MONTEFIORE  
JEWISH HOME, RANDWICK

CLIENT

JACKSON TEECE  
LOT 1, PIER 8-9, 23 HICKSON ROAD, WALSH BAY, NSW 2000

ARCHITECT

MONTEFIORE, RANDWICK  
STAGE 2

PROJECT

PROJECT APPLICATION

PURPOSE OF DRAWING

LANDSCAPE SECTIONS  
SHEET 2

DRAWING TITLE



NORTH

SCALE	AS SHOWN @ A1	DRAWN BY	KV
DATE	01/04/2016	CHECKED BY	KL
JOB NO.	S15-032	APPROVED BY	KS
DRAWING NO.	REVISION		

PA -L-201  
B

DRAWING INFORMATION



INDICATIVE PLANT SCHEDULE Rev A 21.08.15						
STREETS						
Symbol	Species	Common Name	Size	Spacing	Height	Spread
Trees						
Lc	Lophostemon confertus	Brushbox	200L	8m	2.5m	1.2m
Pu	Pyrus ussuriensis	Manchurian Pear	400L	8m	3.5m	1.5m
Shrubs						
Psm	Syzygium 'Select Form'	Dwarf Lilly Pilly	25L	900mm	1.5m	800mm
Perennials and Groundcovers						
Dg	Diets grandiflora	Diets	5L	400mm	500mm	300mm
Dx	Doryanthes excelsea	Gymea Lily	25L	800mm	600mm	500mm
Gl	Gazania tomentosum 'Silver Beauty'	Silver Gazania	2.5L	300mm	100mm	250mm
Of	Osteospermum fruticosum	African Daisy	2.5L	400mm	200mm	300mm
Pu	Phormium tenax 'Purpurea'	Purple Flax	25L	900mm	1.0m	1.0m
INTERNAL STREETS						
Symbol	Species	Common Name	Size	Spacing	Height	Spread
Trees						
Mx	Magnolia 'Exmouth'	Evergreen Magnolia	200L	8m	2.5m	1.2m
COURTYARDS ON STRUCTURE						
Symbol	Species	Common Name	Size	Spacing	Height	Spread
Trees						
Pk	Lagerstroemia indica	Crepe Myrtle	200L	6m	2.5m	1.2m
MI	Magnolia 'Little Gem'	Dwarf Evergreen Magnolia	200L	4m	2.5m	1.2m
Pr	Plumeria rubra 'acutifolia'	Frangipanni	100L	6m	2m	1.5m
Ps	Pyrus calleryana 'Bradford'	Callerys Pear	200L	5m	3.5m	2.5m
Shrubs						
Cq	Camellia sasanqua 'Jennifer Susan'	Pink Camellia	45L	600mm	1.5m	800mm
FT	Fuschia 'Thalia'	Shrub Fuschia	5L	450mm	400mm	300mm
Gm	Gardenia augusta 'Magnifica'	Gardenia	25L	600mm	600mm	500mm
Ma	Muraya paniculata	Orange Jessamine	25L	600mm	600mm	500mm
Ro	Rosmarinus officianalis	Rosemary	5L	500mm	400mm	200mm
Perennials and Groundcovers						
Ac	Arthropodium cirratum	Renga Renga Lily	5L	400mm	350mm	250mm
Ae	Aspidistra elatior	Cast Iron Plant	5L	400mm	400mm	250mm
Cm	Clivea miniata	Kaffir Lily	2.5L	500mm	100mm	200mm
Ce	Colocasia esculenta 'Black Magic'	Black-leafed Taro	5L	500mm	500mm	200mm
Cs	Ctenanthe 'Silver Dust'	Ctenathe	5L	500mm	500mm	300mm
LEG	Linope 'Evergreen Giant'	Giant Liriope	2.5L	250mm	300mm	200mm
Ns	Neoregelia sp.	Bomeliad	5L	350mm	300mm	300mm
Nf	Nepeta x faassenii 'Six Hills Giant'	Cat Mint	2.5L	300mm	200mm	200mm
Pcr	Polia crispata	Polia	2.5L	300mm	150mm	250mm
Vh	Viola hederacea	Native Violet	2.5L	250mm	100mm	200mm
Vo	Viola odorata	Sweet Violet	2.5L	250mm	100mm	200mm
Zc	Zephyranthes candida	Windflower	2.5L	250mm	250mm	250mm
Herbs						
Mp	Mentha x piperita	Mint	125mm pot	200mm	100mm	100mm
Ov	Origanum vulgare	Oregano	125mm pot	200mm	100mm	100mm
RBL	Rosmarinus 'Blue Lagoon'	Prostrate Rosemary	125mm pot	200mm	100mm	100mm
So	Salvia officinalis	Sage	125mm pot	200mm	100mm	100mm
Tv	Thymus vulgaris	Thyme	125mm pot	200mm	100mm	100mm
Climbers						
Sf	Stephanotis floribunda	Wax flower	25L	750mm	1.2m	400mm
Tj	Trachelospermum jasminoides	Chinese Star Jasmine	45L	750mm	1.2m	400mm
RETAIL PLAZA						
Symbol	Species	Common Name	Size	Spacing	Height	Spread
Trees						
Oe	Olea Europea	Olive	100L	6m	2m	1.2m
	Citrus limon 'Meyer'	Meyer Lemon	100L	n/a	2m	1.2m
DEEP SOIL PLANTING						
Symbol	Species	Common Name	Size	Spacing	Height	Spread
Trees						
Ar	Agathis robusta	Smooth Bark Kauri	200L	N/A	3.0m	1.0m
Ac	Angophora costata	Argyle Apple Gum	600RCP	8m	3.5m	1.5m
Bs	Banksia serrata	Old Man Banksia	25L	1.75m	1.5m	600mm
Ca	Cupaniopsis anacardioides	Tuckeroo	200L	5m	3.5m	2.5m
Eh	Eucalyptus haemostoma	Scribbly Gum	400RCP	7m	1.8m	1.0m
EI	Eucalyptus robusta	Swamp Mahogany	400RCP	7m	1.8m	1.0m
Fr	Ficus rubiginosa	Port Jackson Fig	100L	N/A	1.8m	1.0m
Pj	Prunus 'M Fuji'	White Weeping Cherry	200L	5m	3.0m	1.5m
Rp	Robinia pseudoacacia 'Frisia'	Golden Robinia	200L	8m	3.0m	1.0m
Shrubs						
Au	Acacia ulicifolia	Prickly Moses	2.5L	400mm	300mm	200mm
Aa	Austromyrtus 'Blushing Beauty'	Red-leafed Austrimyrthus	25L	600mm	1.0m	600mm
Be	Banksia ericifolia	Heath Banksia	2.5L	500mm	600mm	400mm
Pt	Berberis 'Little Favourite'	Dwarf Purple Berberis	2.5L	500mm	600mm	500mm
Cc	Callistemon 'Firebrand'	Dwarf Bottle Brush	2.5L	400mm	400mm	200mm
Cz	Callistemon 'White Anzac'	White Bottle Brush	2.5L	400mm	400mm	200mm
Ca	Correa alba	White Correa	5L	500mm	400mm	200mm
Cp	Duranta 'Sheena's Gold'	Golden Duranta	25L	600mm	1.0m	600mm
Ve	Viburnum 'Emerald Lustre'	Viburnum	25L	900mm	1.0m	600mm
Wf	Westringia fruticosa	Coastal Rosemary	5L	600mm	400mm	200mm
Ferns						
An	Asplenium australasicum	Birds Nest Fern	5L	500mm	400mm	300mm
Bc	Blechnum cartilagineum	Rasp Fern	2.5L	300mm	200mm	200mm
Perennials and Groundcovers						
Ag	Agave attenuata	Blue Agave	25L	400mm	400mm	400mm
ArC	Ajuga reptans 'Caillins' Giant'	Giant Bugle	2.5L	300mm	150mm	250mm
Az	Alpinia zerumbet	Shell Ginger	5L	500mm	500mm	300mm
Ad	Alternanthera dentata	Purple Alternanthera	2.5L	400mm	200mm	200mm
Bh	Begonia hybrid	Begonia	2.5L	300mm	250mm	200mm
Ct	Canna 'Tropicanna'	Canna Lily	5L	400mm	500mm	200mm
Cg	Carpobrotus glaucescens	Native Pig Face	2.5L	500mm	100mm	200mm
Dc	Dianella caerulea	Paroo Lily	2.5L	400mm	300mm	200mm
Dp	Doryanthes palmeri	Giant Gymea Lily	75L	1.8m	1.5m	
Ec	Echium fastuosum	Pride of Madeira	5L	500mm	500mm	300mm
Hv	Hardenbergia violacea	Happy Wanderer	Tube	600mm	200mm	400mm
Hsp	Hemerocallis sp.	Daylily	5L	300mm	500mm	500mm
Hsc	Hibbertia scandens	Snake Vine	2.5L	600mm	200mm	400mm
Hs	Hymenocallis speciosa	Spider Lily	5L	450mm	400mm	200mm
LI	Lomandra longifolia	Mat Rush	2.5L	400mm	400mm	300mm
Mp	Myoporum parvifolium	Creeping Boobialla	2.5L	500mm	200mm	300mm
Pc	Phormium cookianum	N.Z. Flax	25L	500mm	700mm	700mm
Ph	Phormium tenax 'Maori Maiden'	Dwarf Red Flax	2.5L	400mm	400mm	300mm
St	Sanseveria trifasciata 'Variegata'	Variegated Tongue Plant	5L	300mm	400mm	200mm
Za	Zantedeschia aethiopica 'Green Goddess'	Green Arum Lily	5L	400mm	500mm	200mm
WESTERN PERIMETER PLANTING						
Symbol	Species	Common Name	Size	Spacing	Height	Spread
Trees						
	Elaeocarpus 'Eumundi'	Eumundi Ash	200L	n/a	3.0m	1.0m
	Elaeocarpus reticulatus	Blueberry Ash	200L	n/a	3.0m	1.25m
Shrubs						
As	Acacia sophorae		5L	800mm	600mm	400mm
Dv	Dodonaea viscosa 'Purpurea'	Purple Hop bush	5L	600mm	1.0m	400mm



EXISTING FENCE



INSITU CONCRETE PLANTERS



GRANITE PAVING



STACKBOND GRANITE PAVING



CONCRETE FOOTPATH AND TURF VERGE WITH BUFFER PLANTING



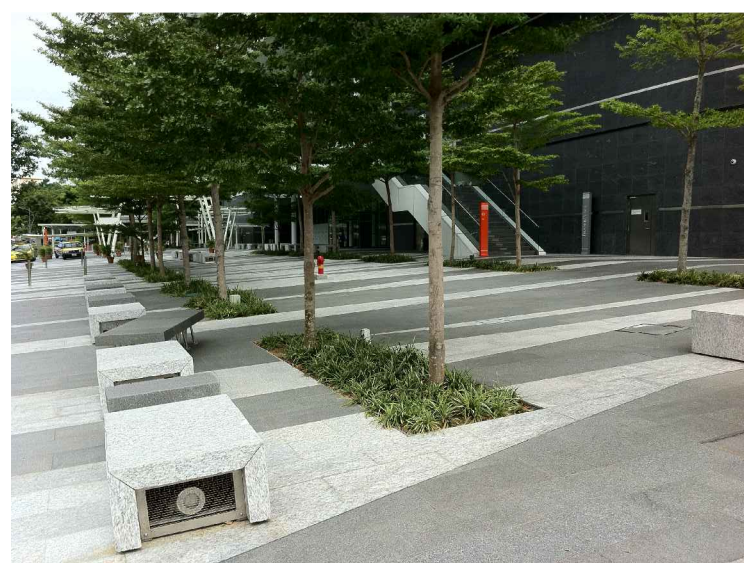
COLOUR BLOCKING OF MASS PLANTING



FOCUS ON FOLIAGE



MASS PLANTING WITH ACCENTS, TO BE VIEWED FROM ABOVE



FLUSH PLANTING TO PLAZA



PRIVATE TERRACE WITH BORROWED COMMUNAL LANDSCAPE



SCULPTURAL PLANTERS



VERTICAL GREEN ELEMENTS



FILTERED VIEWS



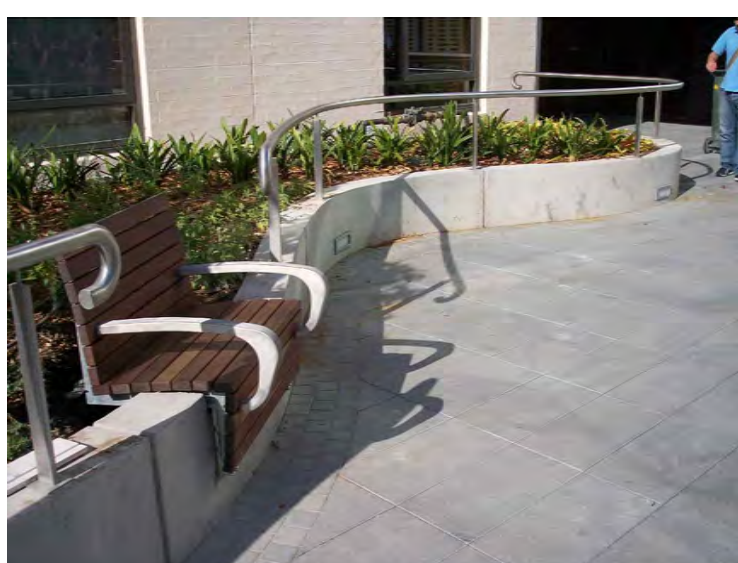
TRELLIS STRUCTURE



LASER CUT PATTERN TO TRELLIS



TIMBER SEATING WITH ARM RESTS



CURVILINEAR RAISED PLANTERS WITH SEATING MOUNTED ON EDGE



WATER FEATURE

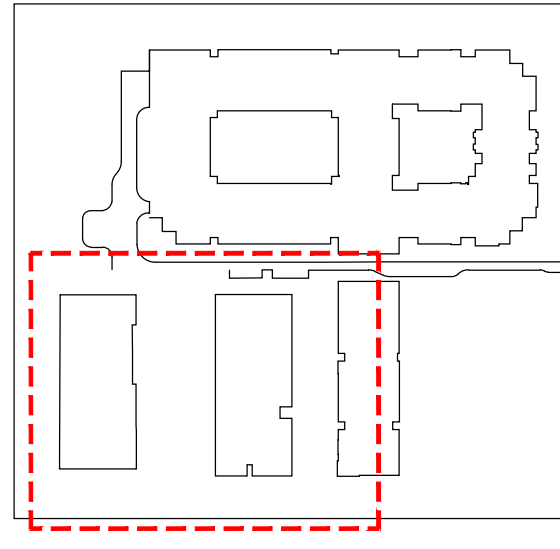
WATER FEATURE IN COURTYARD

O C U L U S

level 1, 5 wilson street / post box 307 **newtown** nsw 2042  
p 02.9557.5533 f 02.9519.8323 sydney@oculus.com.au

LANDSCAPE ARCHITECT

© OCULUS 2015 All rights reserved.



KEY PLAN

DATE	DESCRIPTION	REV
21/08/15	DRAFT PROJECT APPLICATION	A
-	-	-
-	-	-
-	-	-
-	-	-
-	-	-
-	-	-
-	-	-
-	-	-
-	-	-

REVISIONS

SIR MOSES MONTEFIORE  
JEWISH HOME, RANDWICK

CLIENT

JACKSON TEECE

LOT 1, PIER 8-9, 23 HICKSON ROAD, WALSH BAY, NSW 2000

ARCHITECT

MONTEFIORE, RANDWICK  
STAGE 2

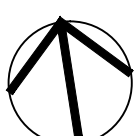
PROJECT

PROJECT APPLICATION

PURPOSE OF DRAWING

INDICATIVE PLANTING SCHEDULE  
AND PRECEDENT IMAGES

DRAWING TITLE



NORTH

SCALE	AS SHOWN @ A1	DRAWN BY	KV
DATE	01/04/2016	CHECKED BY	KL
JOB NO.	S15-032	APPROVED BY	KS
DRAWING NO.			REVISION
PA -L-300			A

DRAWING INFORMATION



Legend

- Ornamental mass planting
- Link on structure
- Private terrace
- Dementia courtyard
- Screening
- Avenue planting
- Street trees
- Boundary tree planting
- Public plaza
- Childcare courtyard
- Turf Verge

Govett Lane

Dangar Street

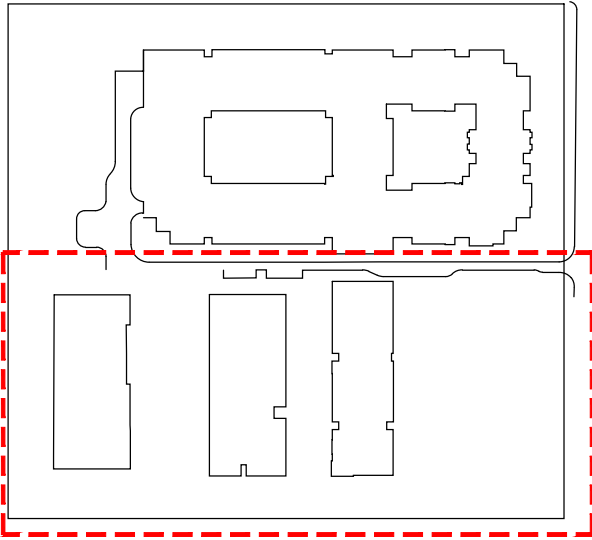
King Street

O C U L U S

level 1, 5 Wilson Street / Post Box 307 Newtown NSW 2042  
p 02 9557 5533 f 02 9519 8323 sydney@oculus.com.au

LANDSCAPE ARCHITECT

© OCULUS 2015 All rights reserved.



KEY PLAN

DATE	DESCRIPTION	REV
21/08/15	DRAFT PROJECT APPLICATION	A
01/04/16	PROJECT APPLICATION	B
-	-	-
-	-	-
-	-	-
-	-	-
-	-	-
-	-	-
-	-	-
-	-	-

REVISIONS

SIR MOSES MONTEFIORE  
JEWISH HOME, RANDWICK

CLIENT

**JACKSON TEECE**  
LOT 1, PIER 8-9, 23 HICKSON ROAD, WALSH BAY, NSW 2000

ARCHITECT

MONTEFIORE, RANDWICK  
STAGE 2

PROJECT

PROJECT APPLICATION

PURPOSE OF DRAWING

SPACES AND PLANTING TYPES

DRAWING TITLE



NORTH

SCALE	N.T.S	DRAWN BY	KV
DATE	01/04/2016	CHECKED BY	KL
JOB NO.	S15-032	APPROVED BY	KS
DRAWING NO.	REVISION		

PA -L-400

B

DRAWING INFORMATION





Legend

- Communal area
- Public plaza
- Private terrace
- Childcare courtyard
- Terrace
- Courtyard
- Existing courtyard

OCULUS

level 1, 5 Wilson Street / Post Box 307 Newtown NSW 2042  
p 02.9557.5533 f 02.9519.8323 sydney@oculus.com.au

LANDSCAPE ARCHITECT

© OCULUS 2015 All rights reserved.

KEY PLAN

DATE	DESCRIPTION	REV
21/08/15	DRAFT PROJECT APPLICATION	A
01/04/16	PROJECT APPLICATION	B
-	-	-
-	-	-
-	-	-
-	-	-
-	-	-
-	-	-
-	-	-
-	-	-

REVISIONS

SIR MOSES MONTEFIORE  
JEWISH HOME, RANDWICK

CLIENT

JACKSON TEECE

LOT 1, PIER 8-9, 23 HICKSON ROAD, WALSH BAY, NSW 2000

ARCHITECT

MONTEFIORE, RANDWICK  
STAGE 2

PROJECT

PROJECT APPLICATION

PURPOSE OF DRAWING

PRIVATE AND PUBLIC SPACE

DRAWING TITLE

NORTH

SCALE	N.T.S	DRAWN BY	KV
DATE	01/04/2016	CHECKED BY	KL
JOB NO.	S15-032	APPROVED BY	KS
DRAWING NO.		REVISION	

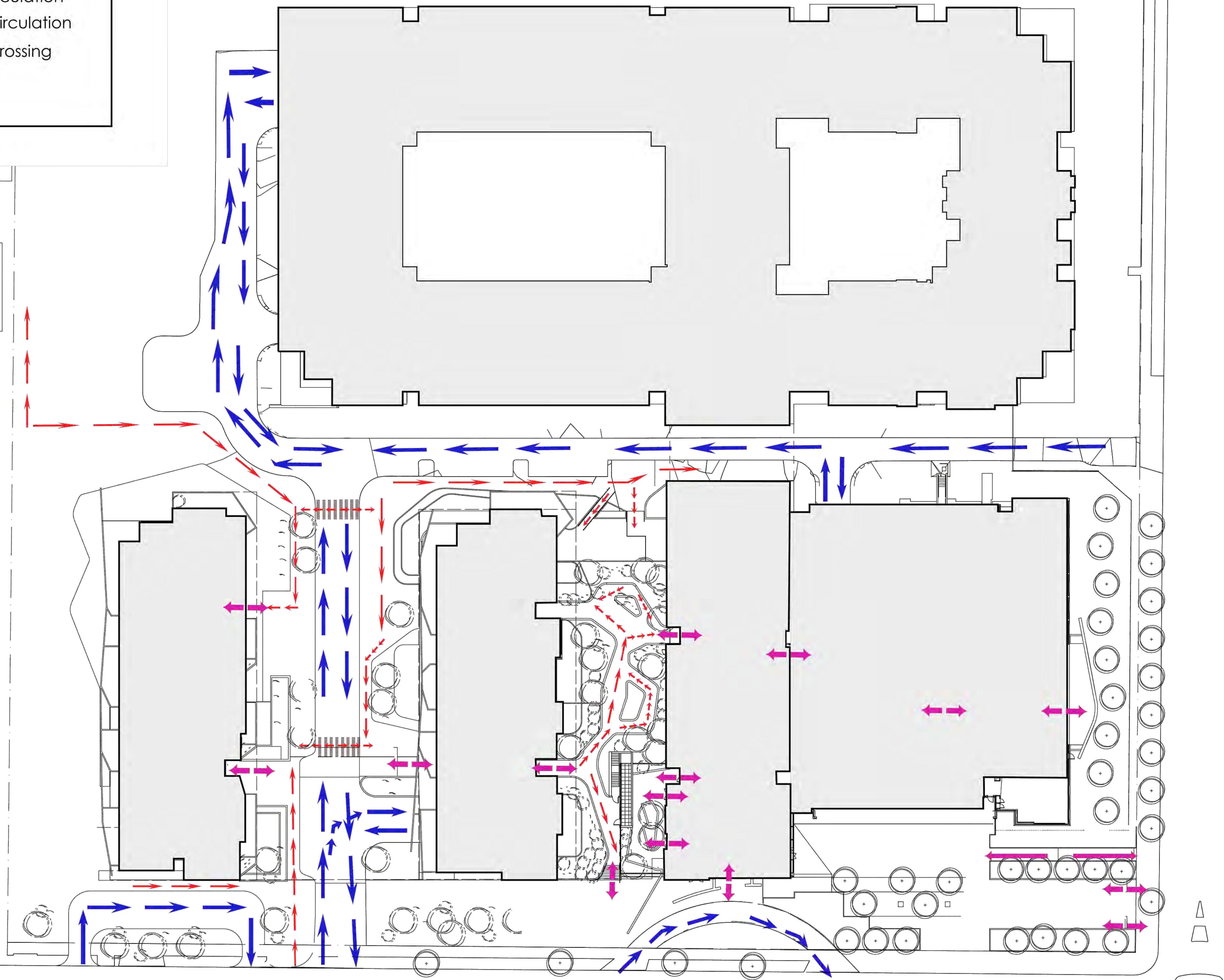
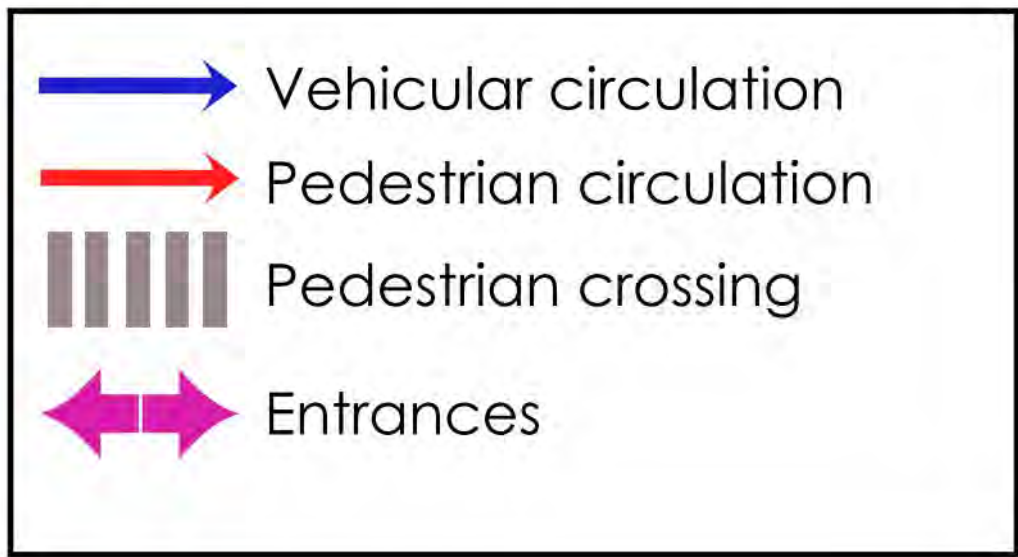
PA -L-401

B

DRAWING INFORMATION



Legend

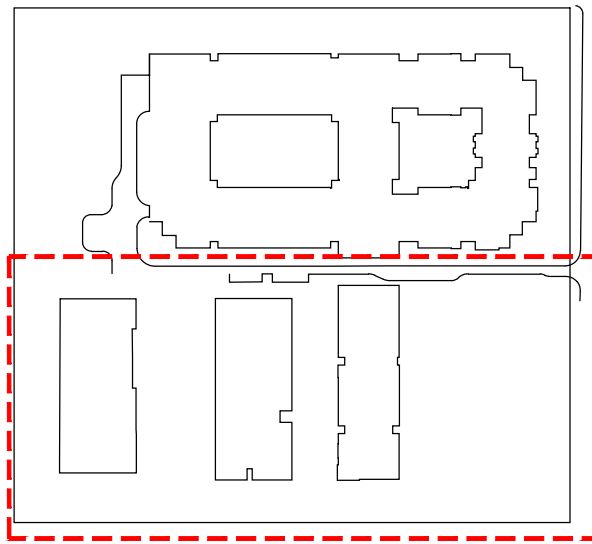


O C U L U S

level 1, 5 wilson street / post box 307 newtown nsw 2042  
p 02.9557.5533 f 02.9519.8323 sydney@oculus.com.au

LANDSCAPE ARCHITECT

© OCULUS 2015 All rights reserved.



KEY PLAN

DATE	DESCRIPTION	REV
21/08/15	DRAFT PROJECT APPLICATION	A
01/04/16	PROJECT APPLICATION	B
-	-	-
-	-	-
-	-	-
-	-	-
-	-	-
-	-	-
-	-	-
-	-	-

REVISIONS

SIR MOSES MONTEFIORE  
JEWISH HOME, RANDWICK

CLIENT

**JACKSON TEECE**  
LOT 1, PIER 8-9, 23 HICKSON ROAD, WALSH BAY, NSW 2000

ARCHITECT

MONTEFIORE, RANDWICK  
STAGE 2

PROJECT

PROJECT APPLICATION

PURPOSE OF DRAWING

CIRCULATION DIAGRAM

DRAWING TITLE



NORTH

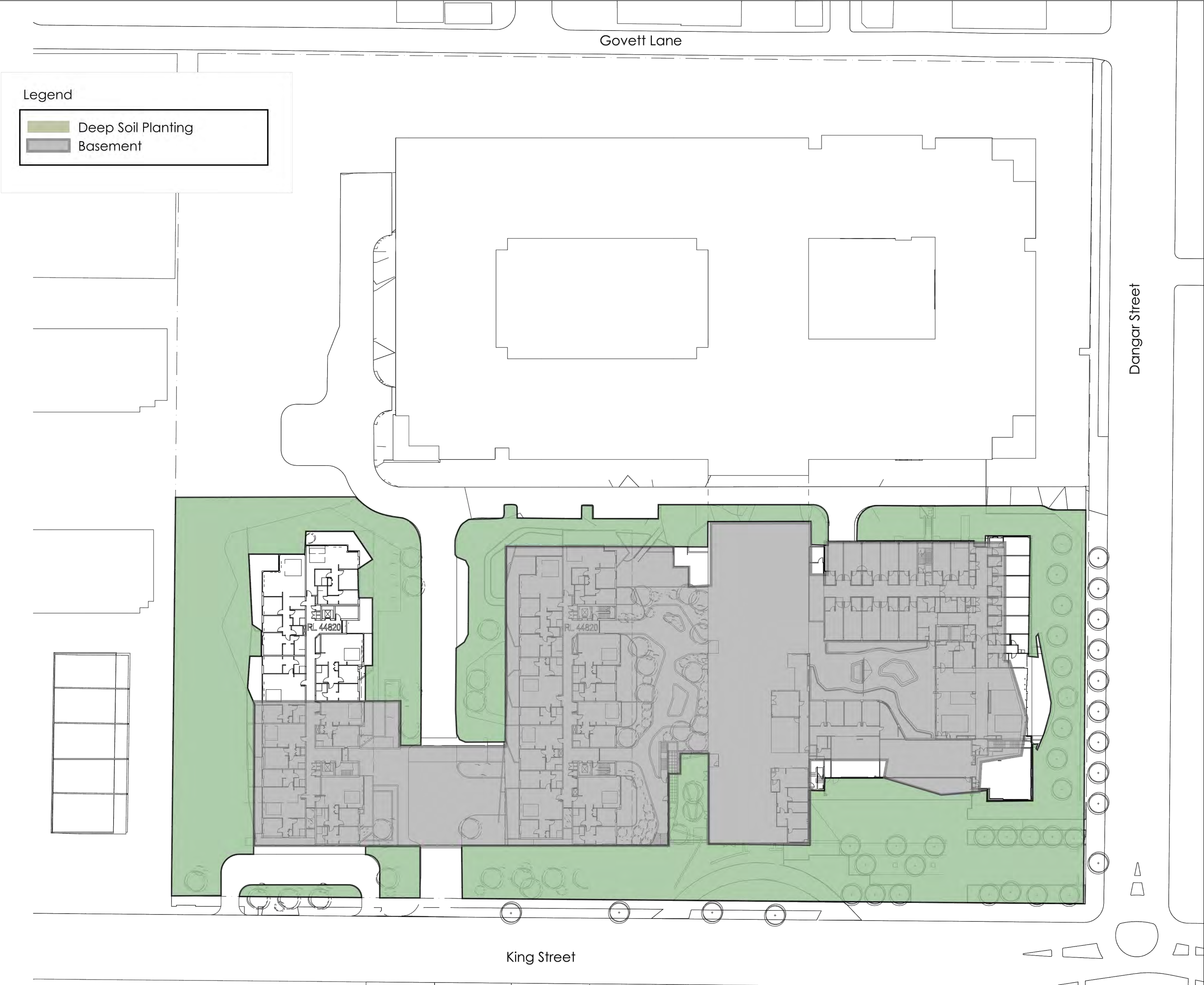
SCALE	N.T.S	DRAWN BY	KV
DATE	01/04/2016	CHECKED BY	KL
JOB NO.	S15-032	APPROVED BY	KS
DRAWING NO.	REVISION		

PA -L-402

B

DRAWING INFORMATION





OCULUS

level 1, 5 wilson street / post box 307 newtown nsw 2042  
p 02.9557.5533 f 02.9519.8323 sydney@oculus.com.au

LANDSCAPE ARCHITECT

© OCULUS 2015 All rights reserved.

KEY PLAN

DATE	DESCRIPTION	REV
01/04/16	DRAFT PROJECT APPLICATION	A
-	-	-
-	-	-
-	-	-
-	-	-
-	-	-
-	-	-
-	-	-
-	-	-
-	-	-

REVISIONS

SIR MOSES MONTEFIORE  
JEWISH HOME, RANDWICK

CLIENT

JACKSON TEECE

LOT 1, PIER 8-9, 23 HICKSON ROAD, WALSH BAY, NSW 2000

ARCHITECT

MONTEFIORE, RANDWICK  
STAGE 2

PROJECT

PROJECT APPLICATION

PURPOSE OF DRAWING

DEEP SOIL PLANTING

DRAWING TITLE

NORTH

SCALE	N.T.S	DRAWN BY	KV
DATE	01/04/2016	CHECKED BY	KL
JOB NO.	S15-032	APPROVED BY	KS
DRAWING NO.	REVISION		
PA -L-403	A		

DRAWING INFORMATION