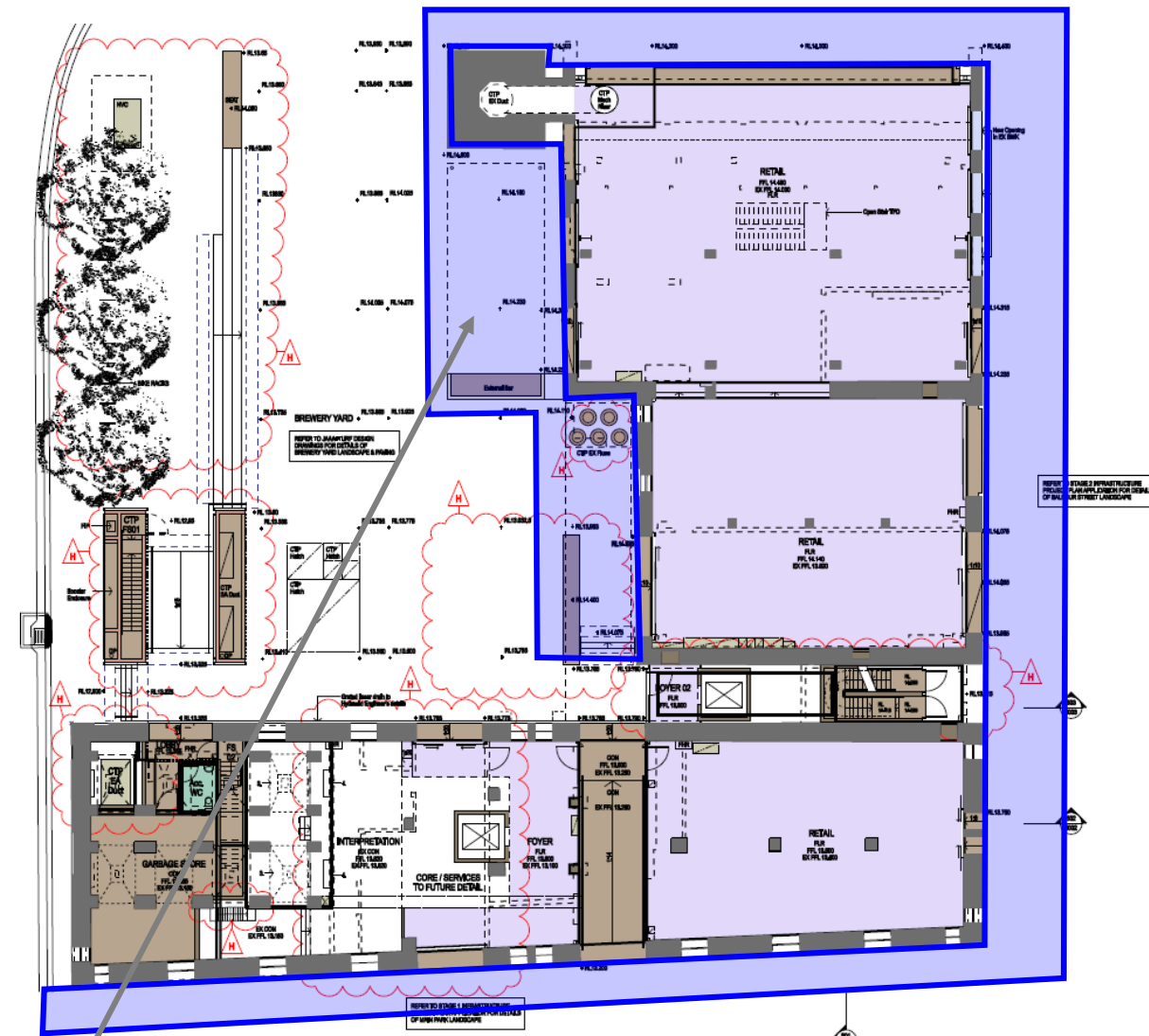


Central Park – Concept Plan

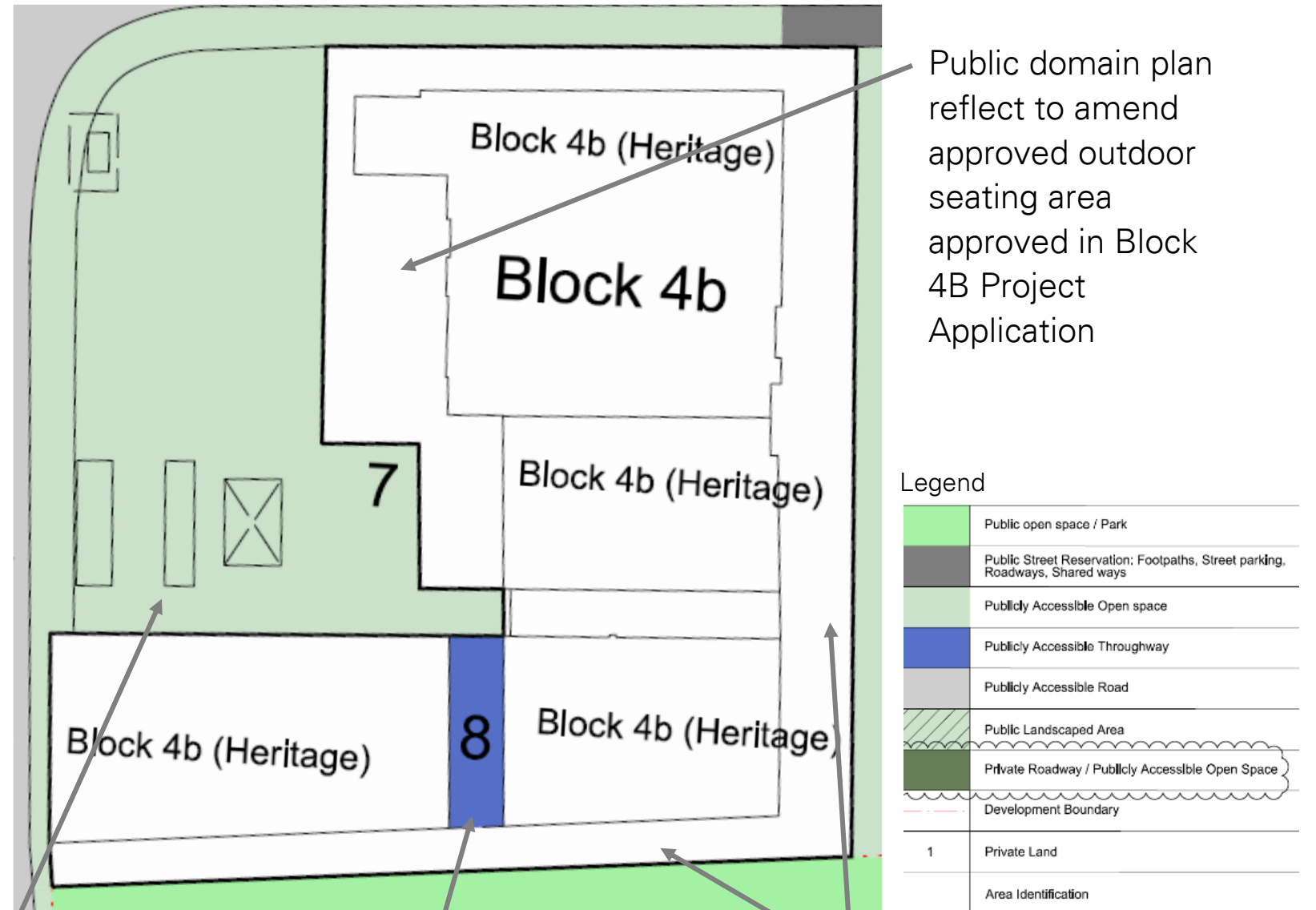
Approved Plan (Ground) – MP 10_0217



Area to be amended – shown white on the Concept Plan

Area approved with an awning over (refer architectural plans and public domain plan of the Project Application MP 10_0217). This area was approved as an outdoor seating area with awning over for use by the retail tenant.

Proposed Public Domain Plan – Concept Plan



Public domain plan reflect to amend approved outdoor seating area approved in Block 4B Project Application

Central Thermal Plant Infrastructure included on the public domain plan for clarity

Publically accessible thoroughway maintained as part of the modification

Amendments to the public domain plan in these location reflect the land ownership /lot boundary of the Brewery Yard site.

Legend

	Public open space / Park
	Public Street Reservation: Footpaths, Street parking, Roadways, Shared ways
	Publicly Accessible Open space
	Publicly Accessible Thoroughway
	Publicly Accessible Road
	Public Landscaped Area
	Private Roadway / Publicly Accessible Open Space
	Development Boundary
1	Private Land
	Area Identification