



Wallum area looking West - february 2014



Wallum area looking West - July 2014



Wallum area looking West - february 2015





2.3.4. Location 4 – West of Wallum Froglet area view west over main waterbody.

Note gradual removal of Torpedo Grass from bank and gradual establishment of native species along and up the bank on both sides of the waterbody.

**Waterbody looking west – July 2007
2008**



Waterbody looking west – February



Waterbody looking west – February 2010



Waterbody looking west – July 2010





Waterbody looking west – February 2012



Waterbody looking west – July 2012



Waterbody looking West - February 2013



Waterbody looking West - July 2013



Waterbody looking West - February 2014



Waterbody looking West - July 2014





Waterbody looking West - February 2015



2.3.5. Location 5 – South of Wallum Froglet area looking southeast.

Again note gradual removal of Torpedo Grass from bank and gradual establishment of native species along and up the bank

Waterbody looking south – July 2007



Waterbody looking south – February 2008





Waterbody looking south – February 2010



Waterbody looking south – July 2010



Waterbody looking south – February 2012



Waterbody looking south – July 2012





Waterbody looking South - February 2013



Waterbody looking South - July 2013



Waterbody looking South - July 2014



Waterbody looking South - February 2015





2.3.6. Location 6 – View south from northeastern corner of main waterbody

Note initial Torpedo Grass infestation, Torpedo Grass removal, and macrophyte regeneration at water's edge.

Waterbody looking south along edge – July 2007 **Waterbody looking south along edge - Feb 2008**



Waterbody view south along edge - Feb 2010

Waterbody view south along edge – July





**Waterbody view south along edge - Feb 2012
2012**



Waterbody view south along edge – July



**Waterbody looking south along edge –
2013
February 2013**



Waterbody looking south along edge - July





**Waterbody looking south along edge –
February 2014**



Waterbody looking south along edge - July 2014



Waterbody looking South along edge - February 2015





2.3.7. Location 7 – Central area looking south.

Note pasture crop control in initial stages followed by good sedge growth through to 2012.

**Central area looking south – July 2007
2008**



Central area looking south – February



**Central area looking south – February 2010
2010**



Central area looking south – July





**Central area looking south – February 2012
2012**



Central area looking south – July



Central area looking south - July 2013



Central area looking south - February 2014





Central area looking south - July 2014



Central area looking south - February 2015



2.3.8. Location 8 – Central area of Habitat Corridor viewing south.

Note initial infestation of Torpedo Grass, management including controlled burn (late 2008), and then supplementary planting amongst regrowth.

Central - Island area looking south – July 2007



Central - Island area looking south – Feb 2008





Central - Island area looking south – July 2008



Central - Island area looking south – Feb



Central - Island area looking south – July 2009



Central - Island area looking south – Feb

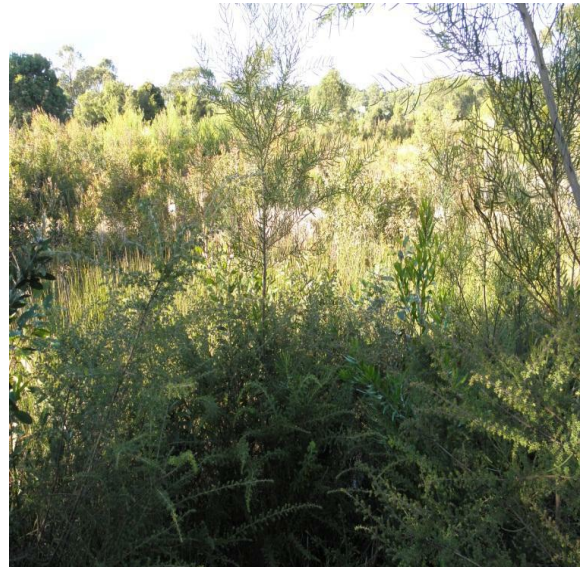




Central - Island area looking south – July 2010



**Central - Island area looking south
– July 2011**



**Central - Island area looking south – Feb 2012
2012**



Central - Island area looking south – July





Central - Island Area looking south - February 2014



**The Island Area also looking south
- February 2008 (a)**



**The Island Area also looking south
- July 2008 (a)**





**The Island Area also looking south
- February 2009 (a)**



**The Island Area also looking south - July 2009
(a)**



**The Island Area also looking south
- February 2010 (a)**



**The Island Area also looking south - July 2010
(a)**

