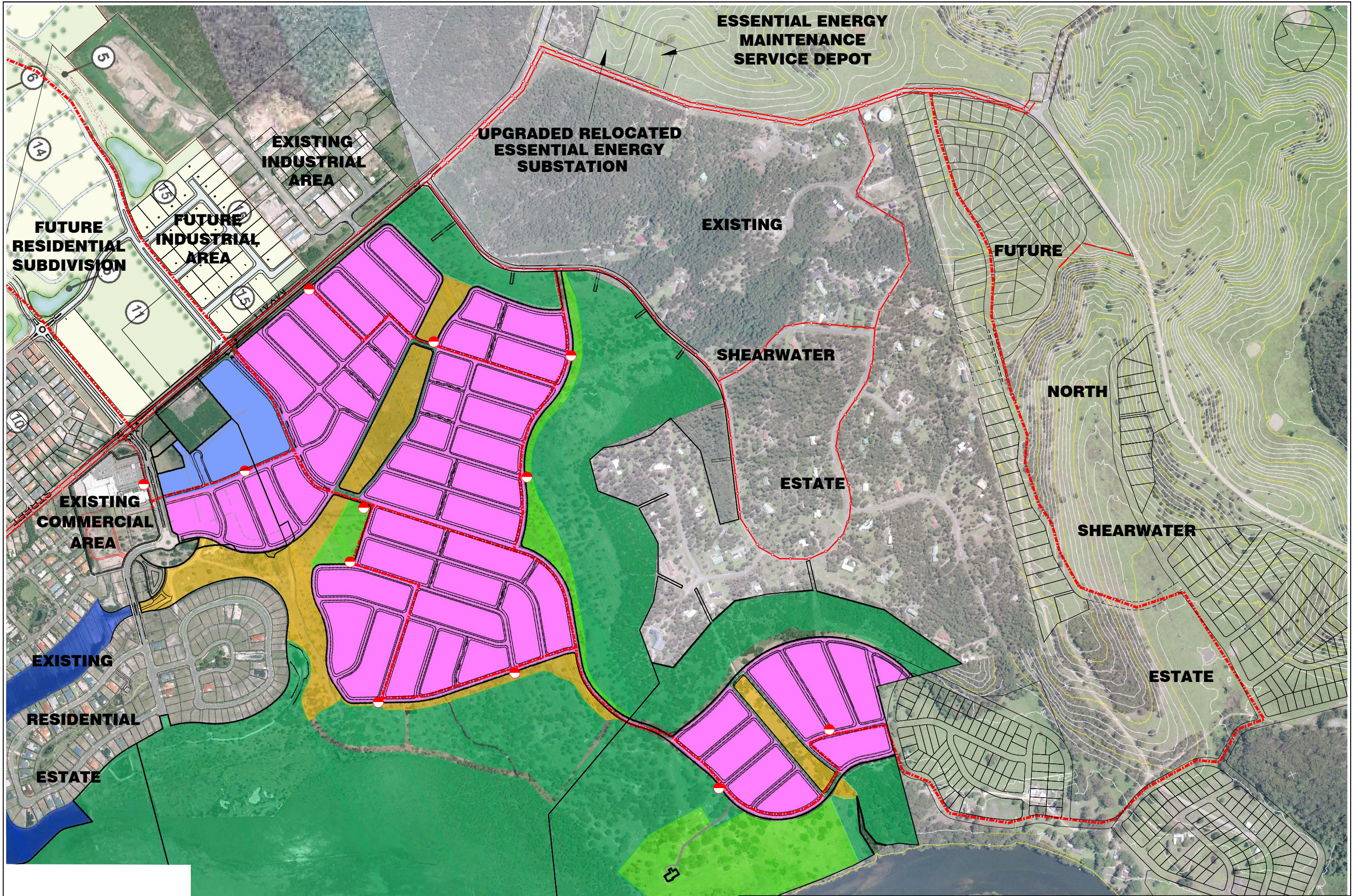


Appendix E:

Reticulated Electrical Servicing Strategy



EXISTING OVERHEAD POWER
EXISTING UNDERGROUND POWER
PROPOSED 11KV TRUNK
UNDERGROUND POWER
PROPOSED KIOSK

| | | | | | | | |
|-----|--|----------|-------|---------|----------|-----------|--|
| F | New Layout - Sheargold Group | AV | AV | | | | |
| E | Revised Layout | DWK | DWK | - | - | 21/10/15* | |
| D | Revised PAC Supported Riverside Layout | AV | AV | - | - | 30/08/12* | |
| C | Revised Riverside Layout | AV | AV | DWK* | BL* | 1/11/10* | |
| REV | DETAILS OF AMENDMENT | DESIGNED | DRAWN | CHECKED | APPROVED | DATE | |

* Denote the original signature and date when revision was issued.

TATTERSALL
LANDER PTY LTD
DEVELOPMENT CONSULTANTS
ENGINEERING, SURVEYING & PLANNING
2 Bourke St. P.O.Box 580
RAYMOND TERRACE 2324
Fax (02) 49671733 Phone (02) 49671500

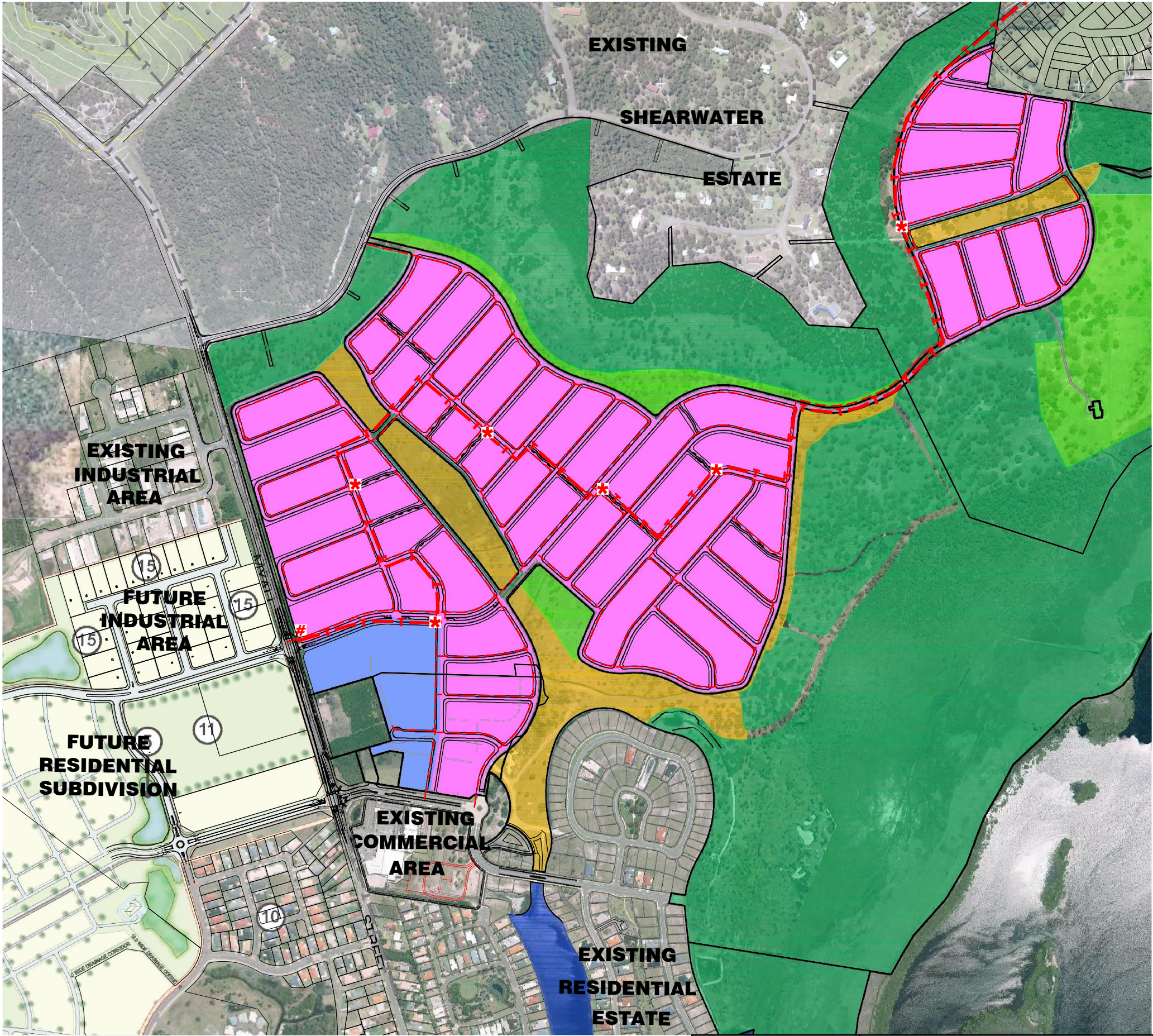


FUTURE SERVICING OF
TEA GARDENS
RIVERSIDE
ELECTRICAL SERVICING STRATEGY

| | |
|------------------------|-----------------------|
| COUNCIL GREAT LAKES | REFERENCE 20700087 |
| PARISH COWEAMABH | SHEET SIZE A1 |
| SCALE 1:4000 | SHEET No. 1 |
| DATE : 15/16 21/10/15 | |

Appendix F:

Communications Servicing Strategy



EXISTING OPTICAL FIBRE CABLE
PROPOSED DISTRIBUTION NETWORK CABLE
PROPOSED LOCAL NETWORK CABLE
PROPOSED FIBRE ACCESS NODE
PROPOSED FIBRE DISTRIBUTION HUB

| | | | | | | |
|-----|--|----------|-------|---------|----------|-----------|
| F | New Layout - Sheargold Group | AV | AV | | | |
| E | Revised Layout | DWK | DWK | - | - | 21/10/15* |
| D | Revised PAC Supported Riverside Layout | AV | AV | - | - | 30/08/12* |
| C | Revised Riverside Layout | AV | AV | DWK* | BL* | 1/11/10* |
| REV | DETAILS OF AMENDMENT | DESIGNED | DRAWN | CHECKED | APPROVED | DATE |

* Denote the original signature and date when revision was issued.

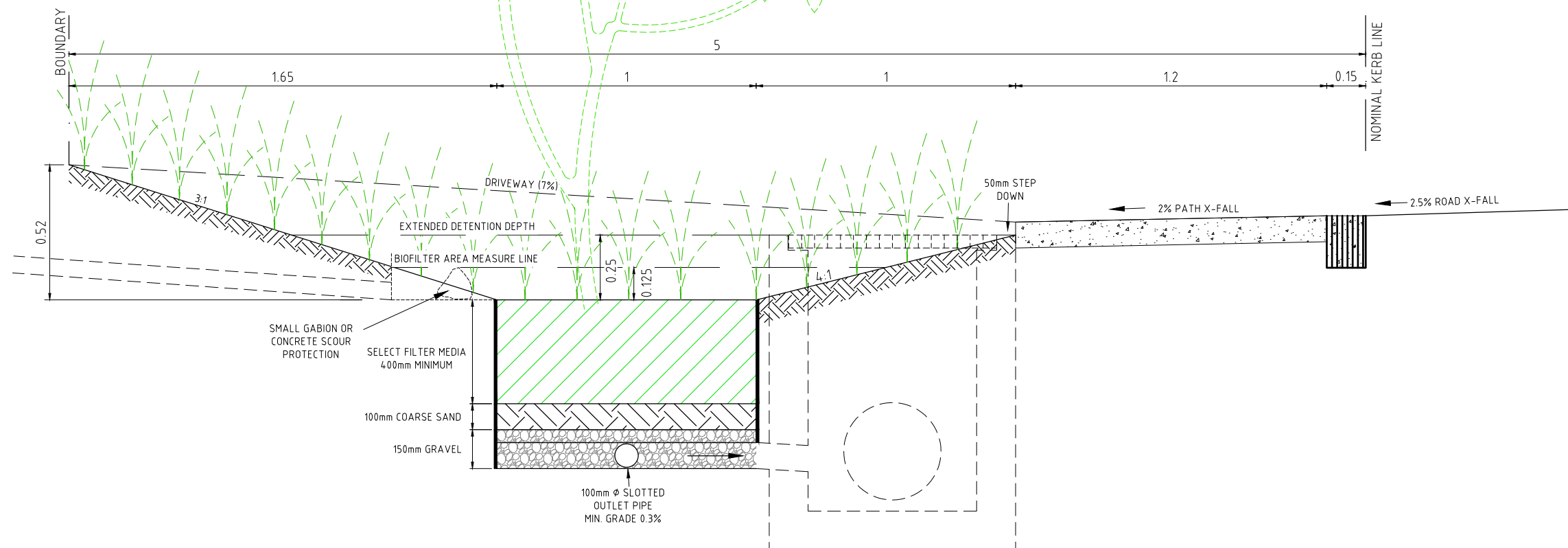
TATTERSALL LANDER PTY LTD
DEVELOPMENT CONSULTANTS
ENGINEERING, SURVEYING & PLANNING
2 Bourke St. P.O.Box 580
RAYMOND TERRACE 2324
Fax (02) 49871733 Phone (02) 49871500

FUTURE SERVICING OF
TEA GARDENS
RIVERSIDE
COMMUNICATIONS SERVICING STRATEGY

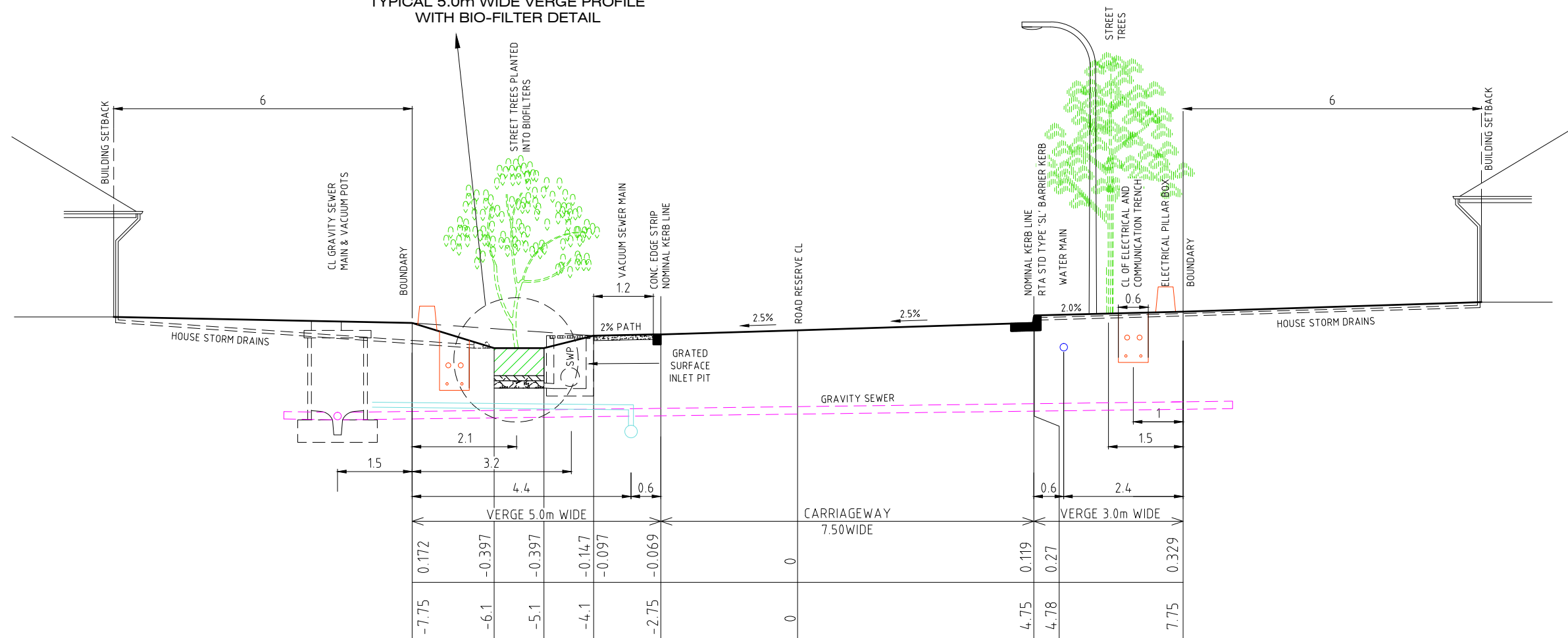
| | |
|------------------------|-----------------------|
| COUNCIL GREAT LAKES | REFERENCE 20700088 |
| PARISH COWEAMABH | SHEET SIZE A1 |
| SCALE 1:4000 | SHEET No. 1 |
| DATE : 15/15 | Plotted 21/10/15 |

Appendix G:

Typical Footpath Service Allocations



TYPICAL 5.0m WIDE VERGE PROFILE
WITH BIO-FILTER DETAIL



T.S. 1 TYPICAL SECTION
ROAD 15.5m WIDE
SCALE 1:50

| REV | DETAILS OF AMENDMENT | DESIGNED | DRAWN | CHECKED | APPROVED | DATE |
|--|----------------------|----------|-------|---------|----------|------|
| A | Original Issue | AV | AV | | | |
| * Denote the original signature and date when revision was issued. | | | | | | |

TATTERSALL
LANDER Pty Ltd
DEVELOPMENT CONSULTANTS



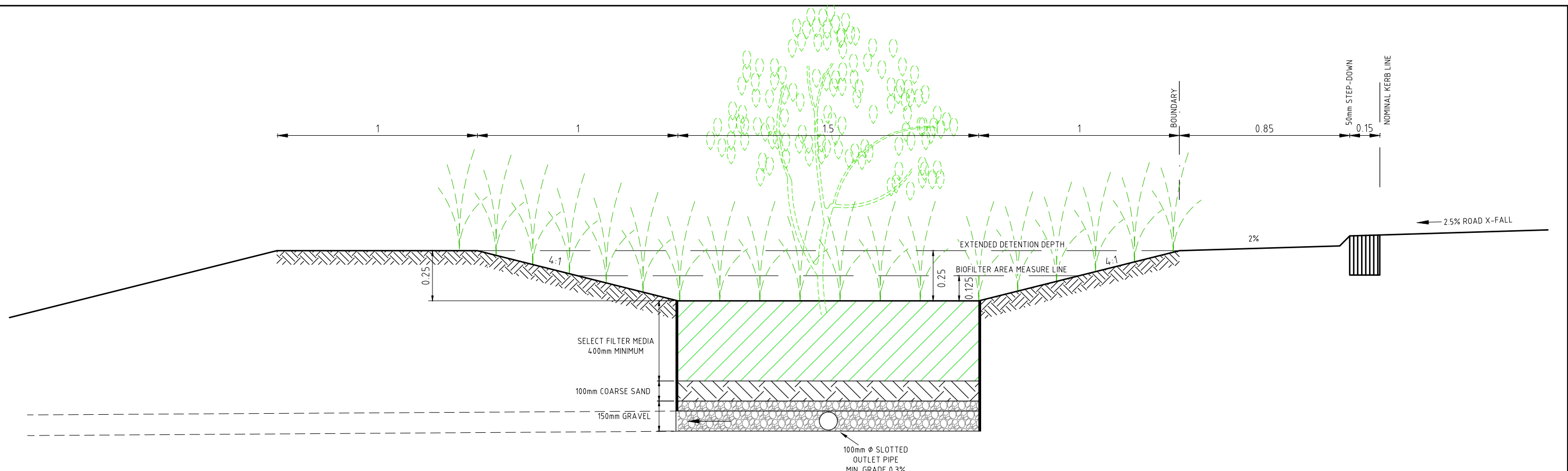
SCALE :

SHEET No. : 5
JOB No. : 201479

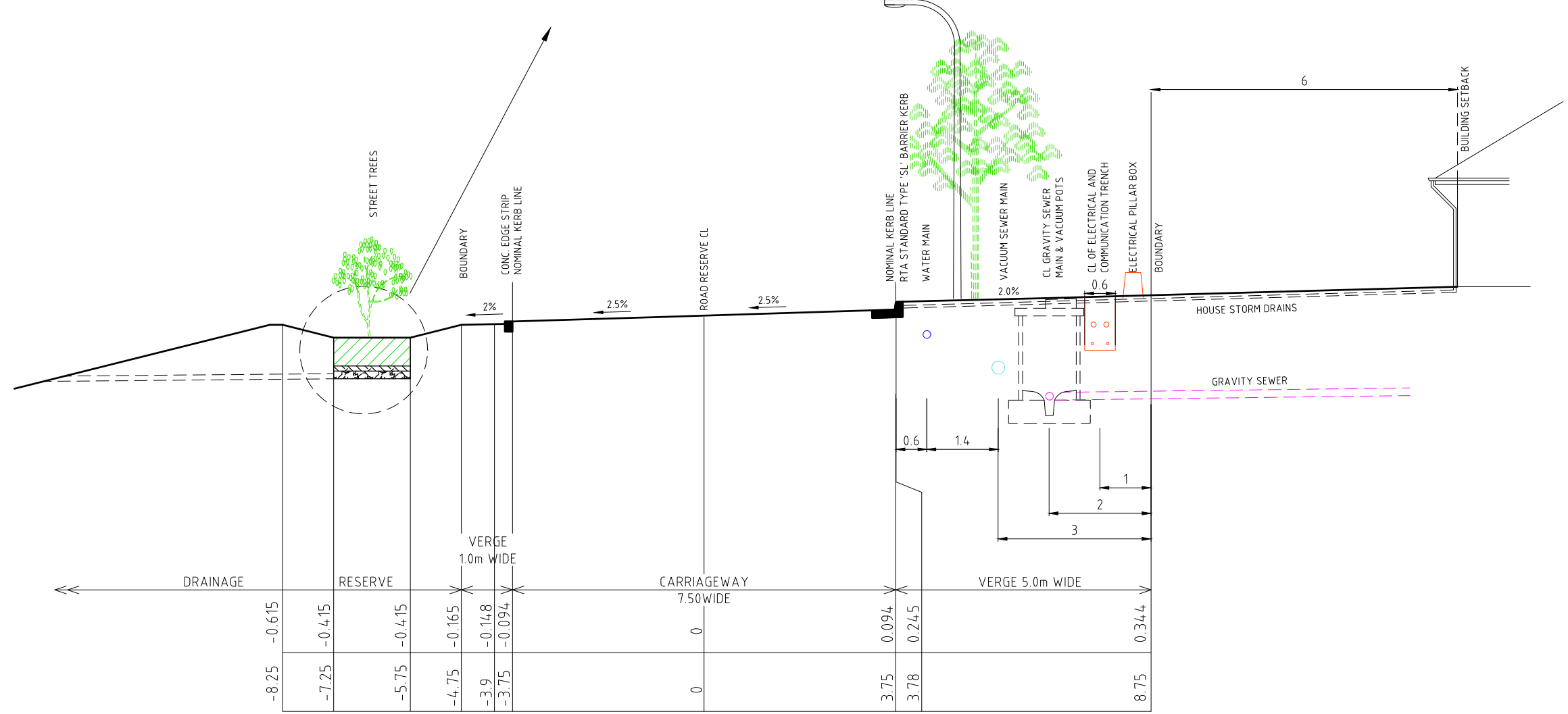
FILE : 21200151
DATE : Plotted 14/27 21/10/15

SHEET
SIZE
A1

COMPUTER FILE : S:\projects\Riverside\dwg\Street Typical Service Allocations.dwg



TYPICAL 1.0m WIDE VERGE PROFILE WITH
BIO-FILTER IN ADJACENT RESERVE



T.S. 2 TYPICAL SECTION
RING ROAD 12.5m WIDE
SCALE 1:50

| B | Additional Details Added | AV | AV | | | | |
|-----|--|----------|-------|---------|----------|------|--|
| A | Original Issue | VL | DWK | | | | |
| REV | DETAILS OF AMENDMENT | DESIGNED | DRAWN | CHECKED | APPROVED | DATE | |
| | * Denote the original signature and date when revision was issued. | | | | | | |

TATTERSALL
LANDER Pty Ltd
DEVELOPMENT CONSULTANTS



| | | | |
|--|-----------------|-------------------------------|---------------|
| SCALE : | SHEET No. :#### | FILE : #### | SHEET SIZE |
| COMPUTER FILE : S:\projects\Riverside\dwg\Street Typical Service Allocations.dwg | JOB No. : #### | DATE : Plotted 14:28 21/10/15 | A1 |