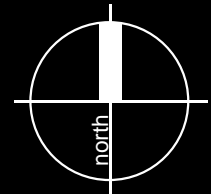


SITE IMAGE



SITE IMAGE

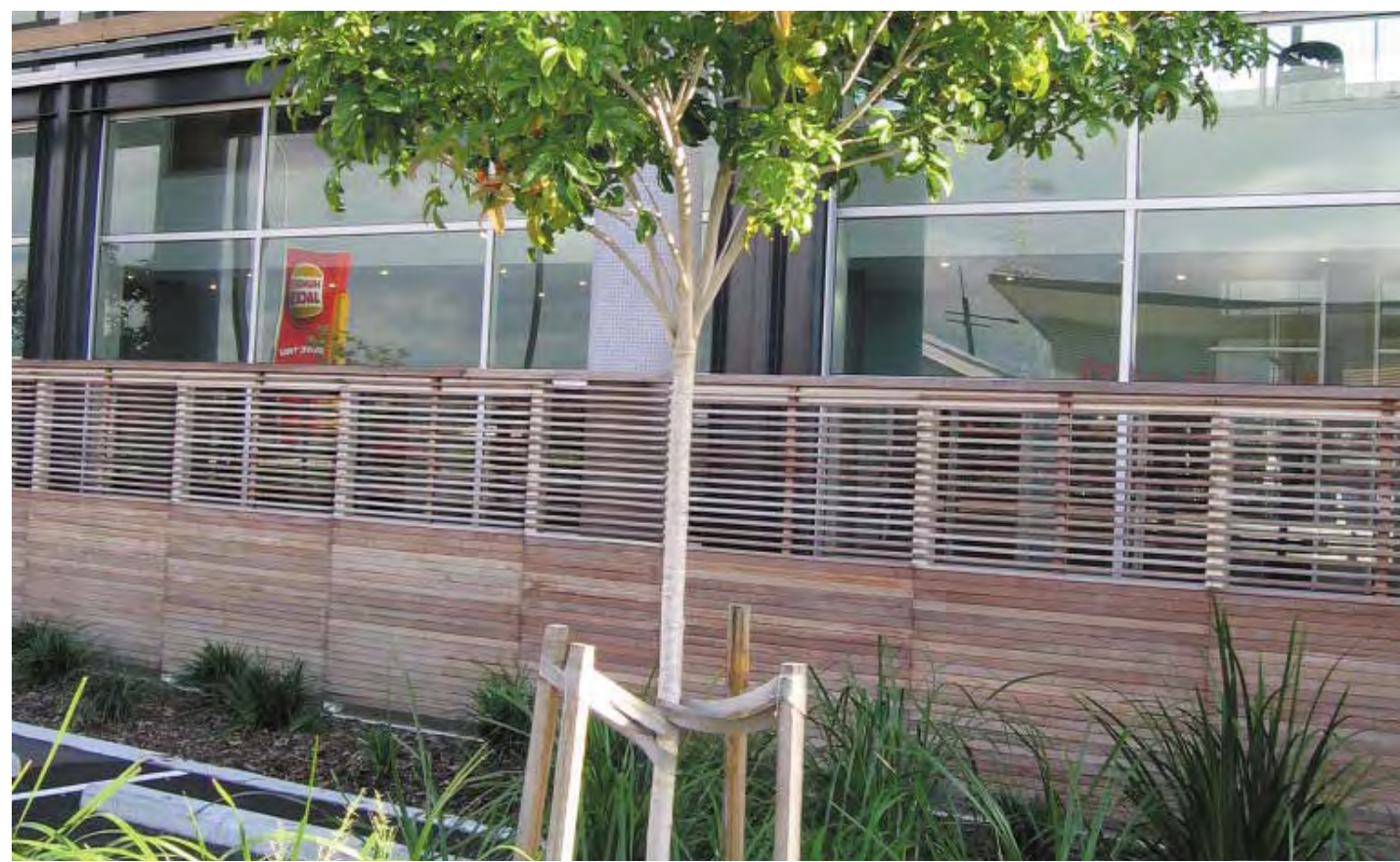
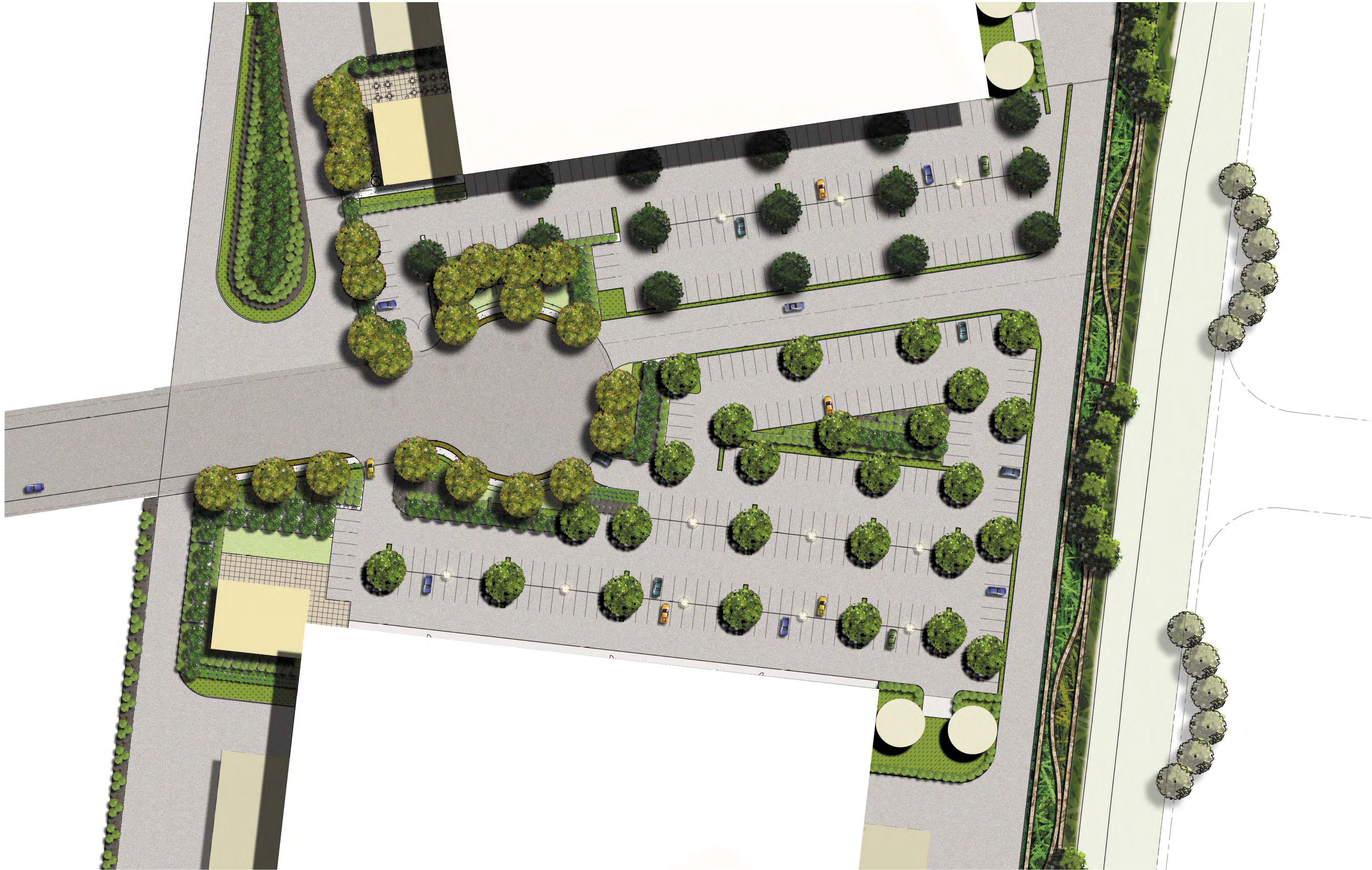


DRAWING NO: 151.1
ISSUE: F
SCALE: 1:500@ A1 1:1000@ A3

CLIENT: GOODMAN INTERNATIONAL LTD
SI JOB NO: Z 1620
DATE: MARCH 2008

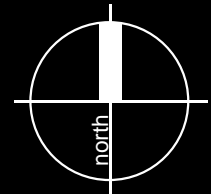
OAKDALE CENTRAL LANDSCAPE PRECINCT PLAN





SITE IMAGE

Goodman

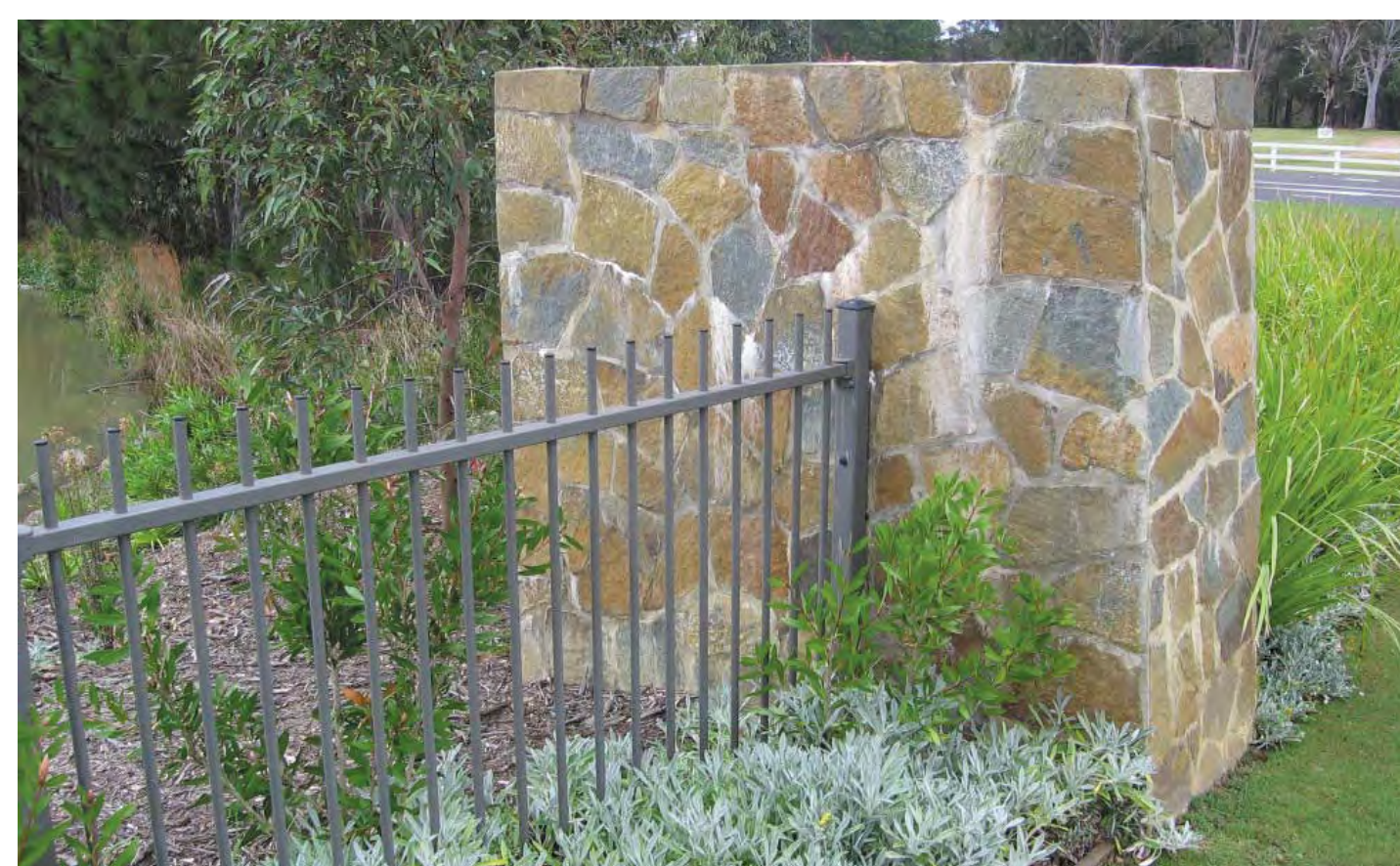
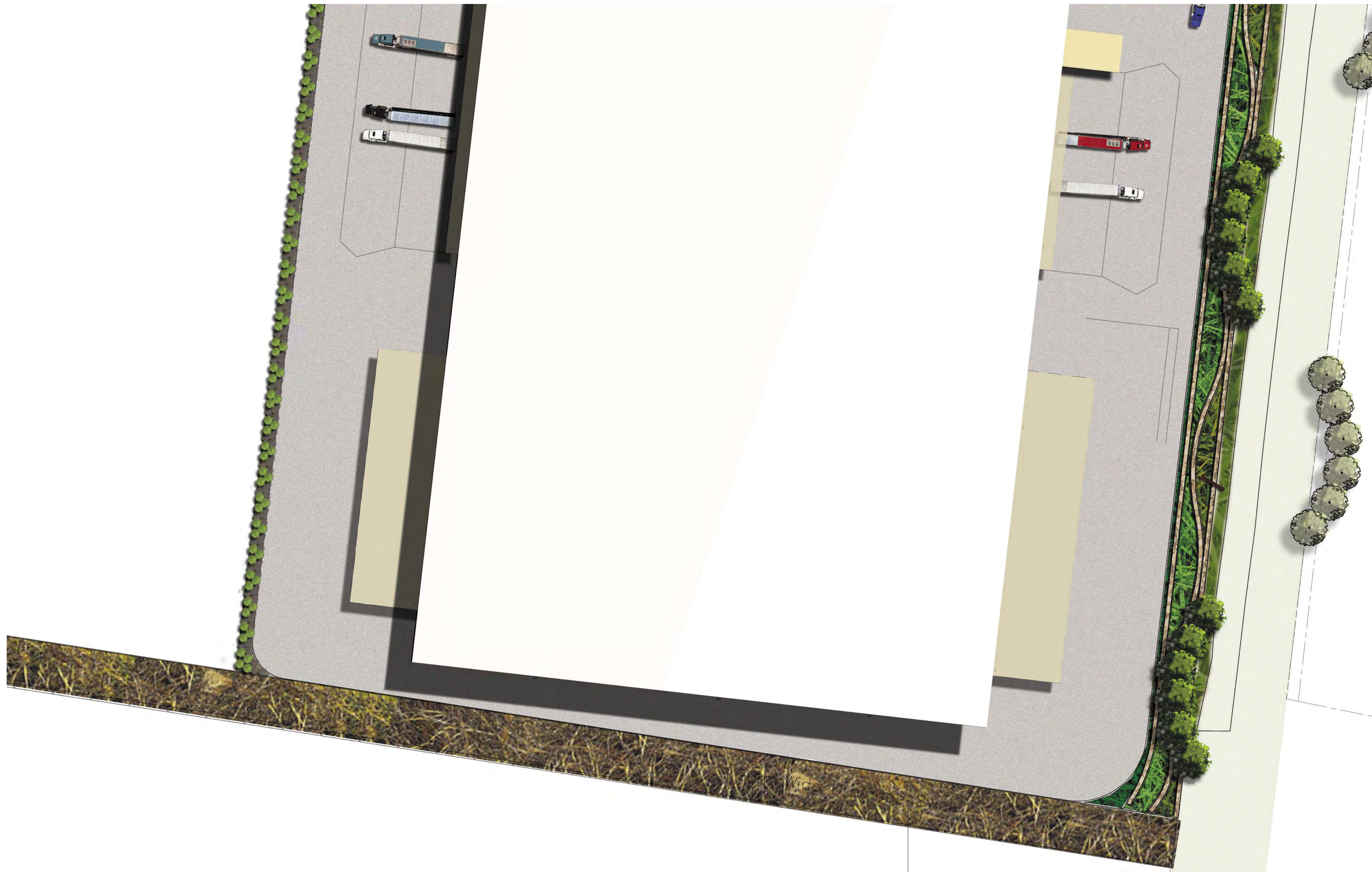


DRAWING NO: 152.1
ISSUE: F
SCALE: 1:500@ A1 1:1000@ A3

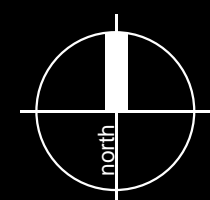
CLIENT: GOODMAN INTERNATIONAL LTD
SI JOB NO: Z 1620
DATE: MARCH 2008

OAKDALE CENTRAL LANDSCAPE PRECINCT PLAN





SITE IMAGE

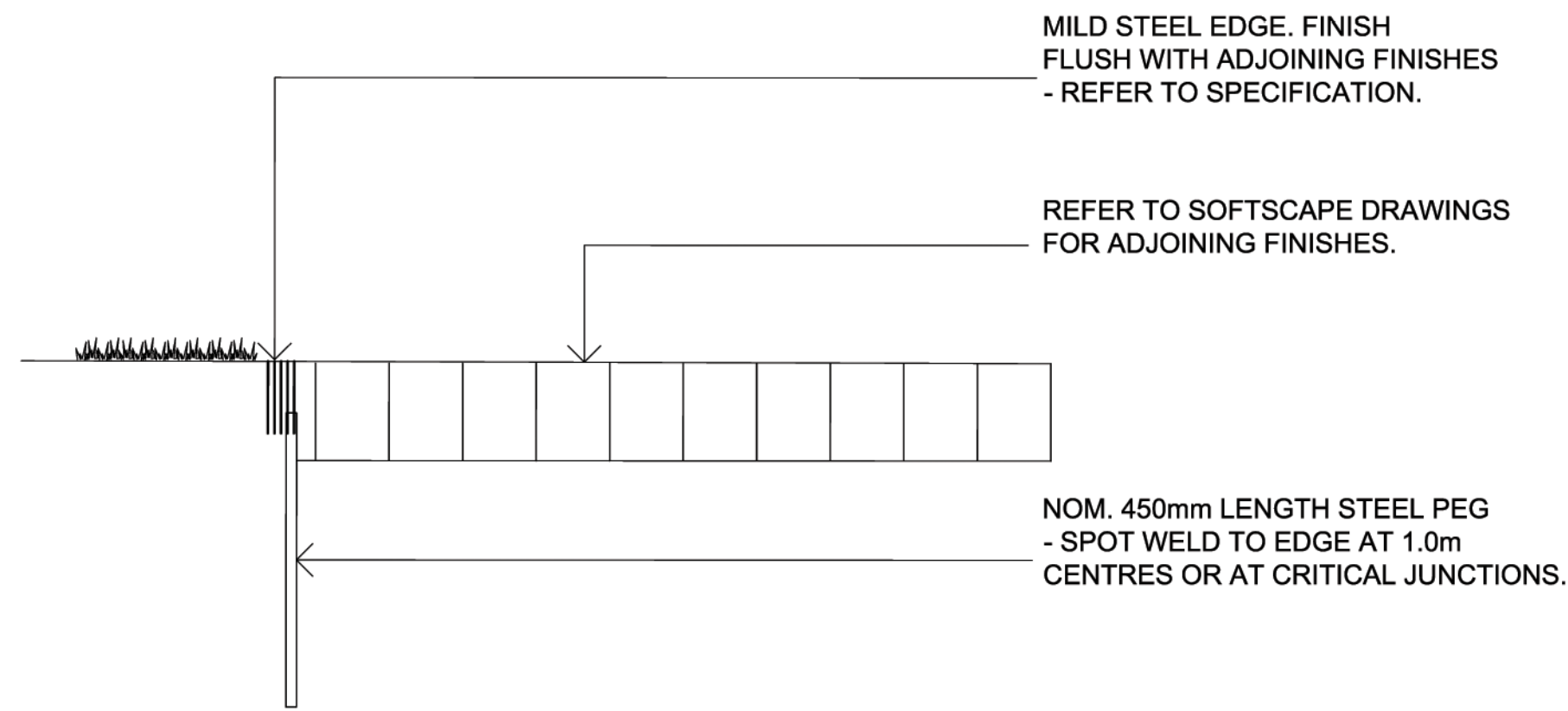
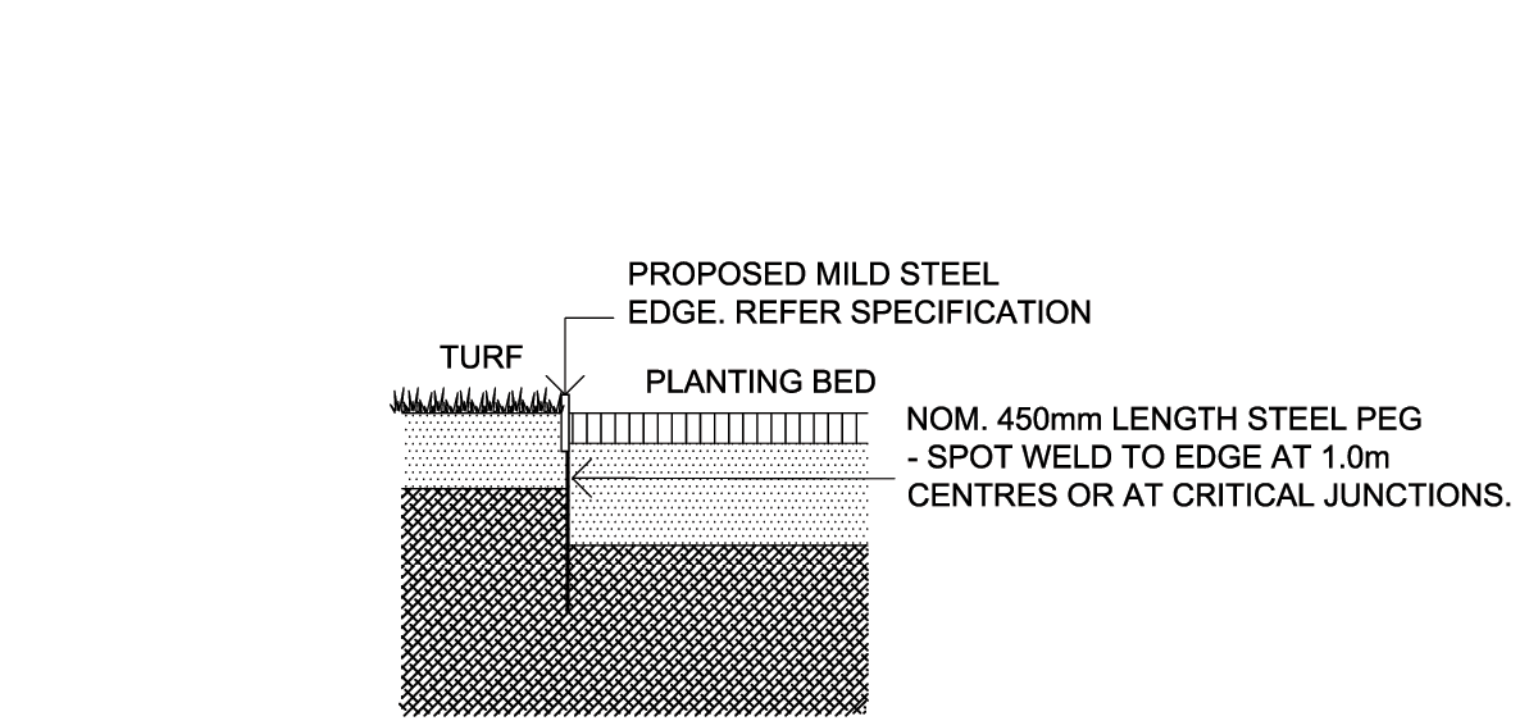


DRAWING NO: 153.1
ISSUE: F
SCALE: 1:500@ A1 1:1000@ A3

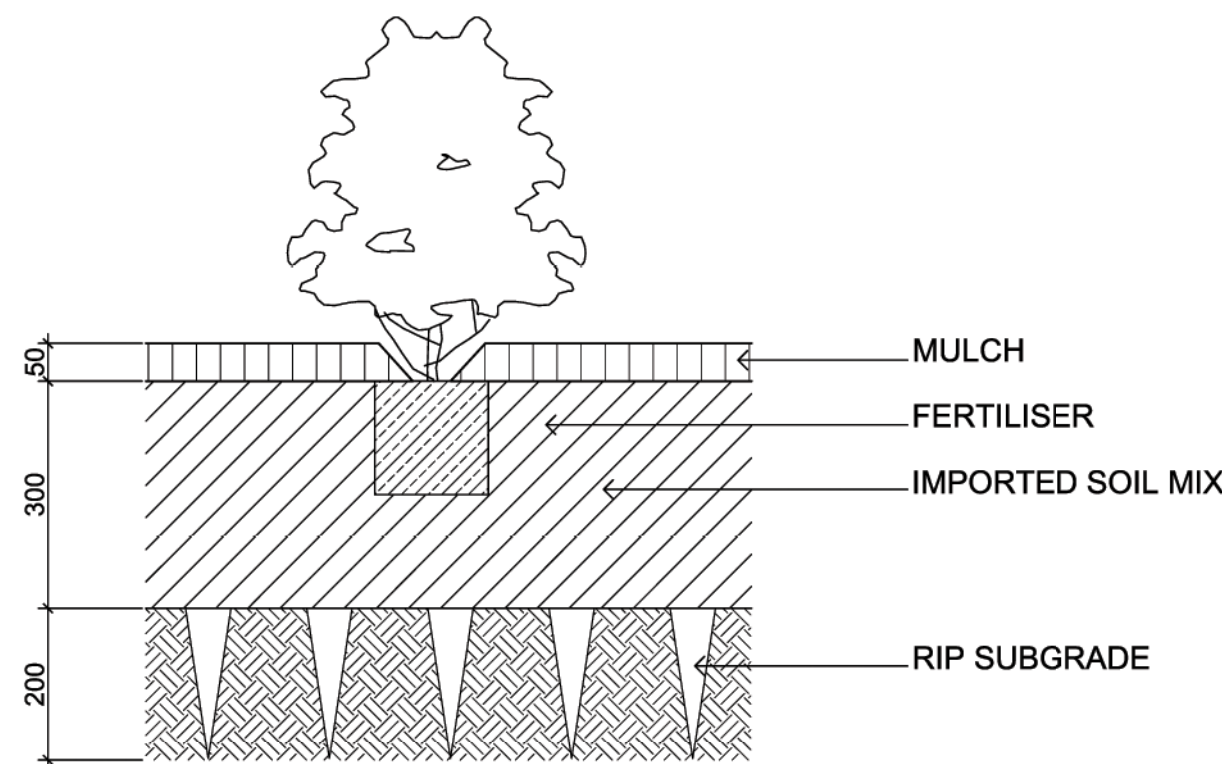
CLIENT: GOODMAN INTERNATIONAL LTD
SI JOB NO: Z 1620
DATE: MARCH 2008

OAKDALE CENTRAL LANDSCAPE PRECINCT PLAN

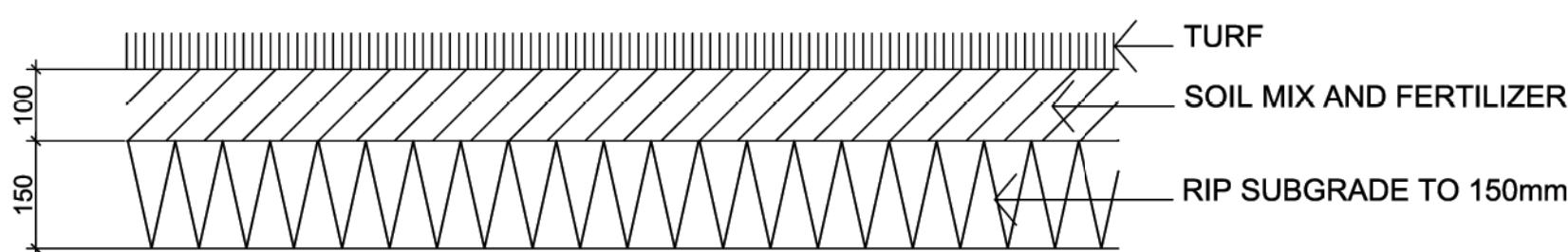




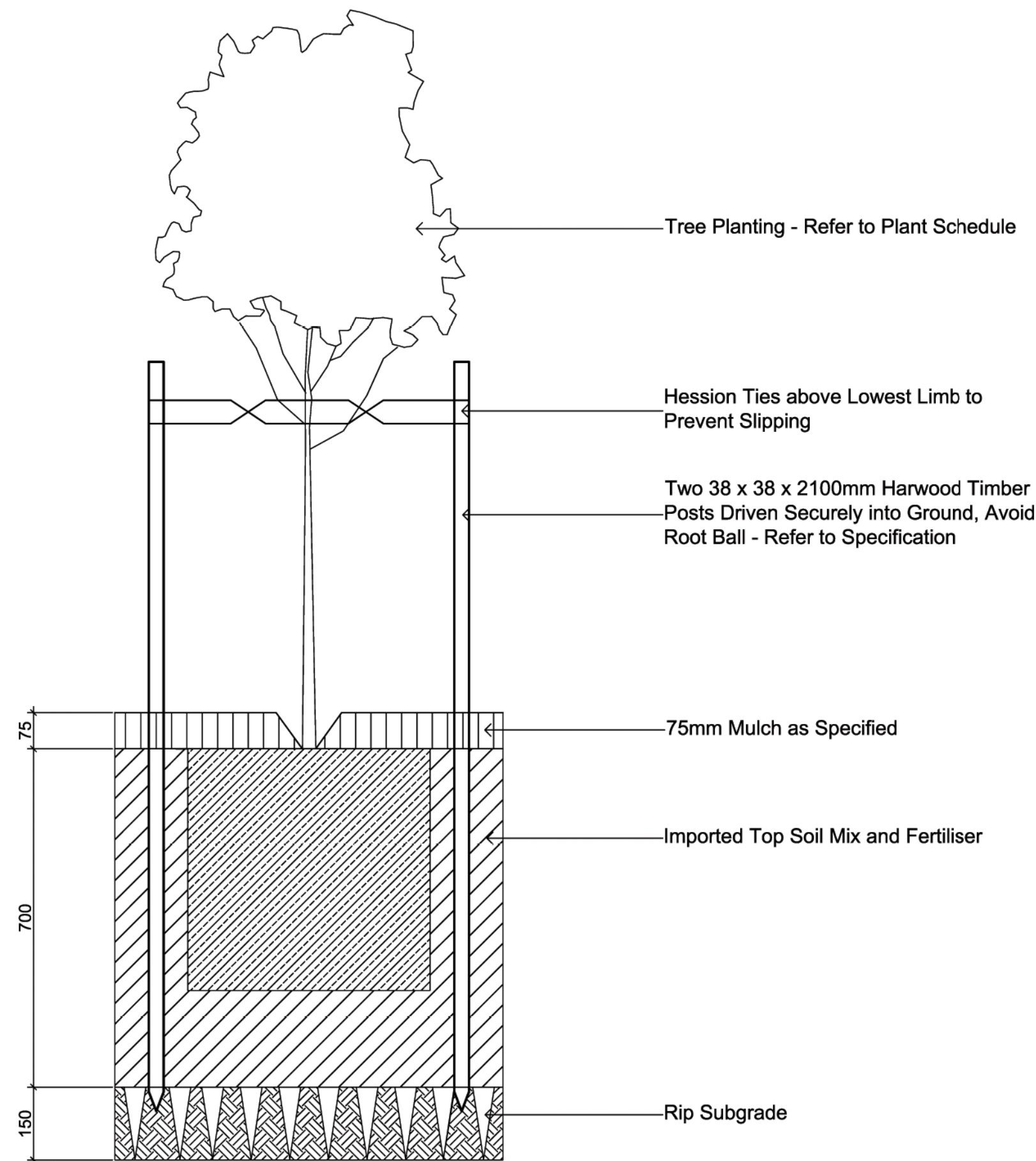
MILD STEEL EDGE
Scale 1:10



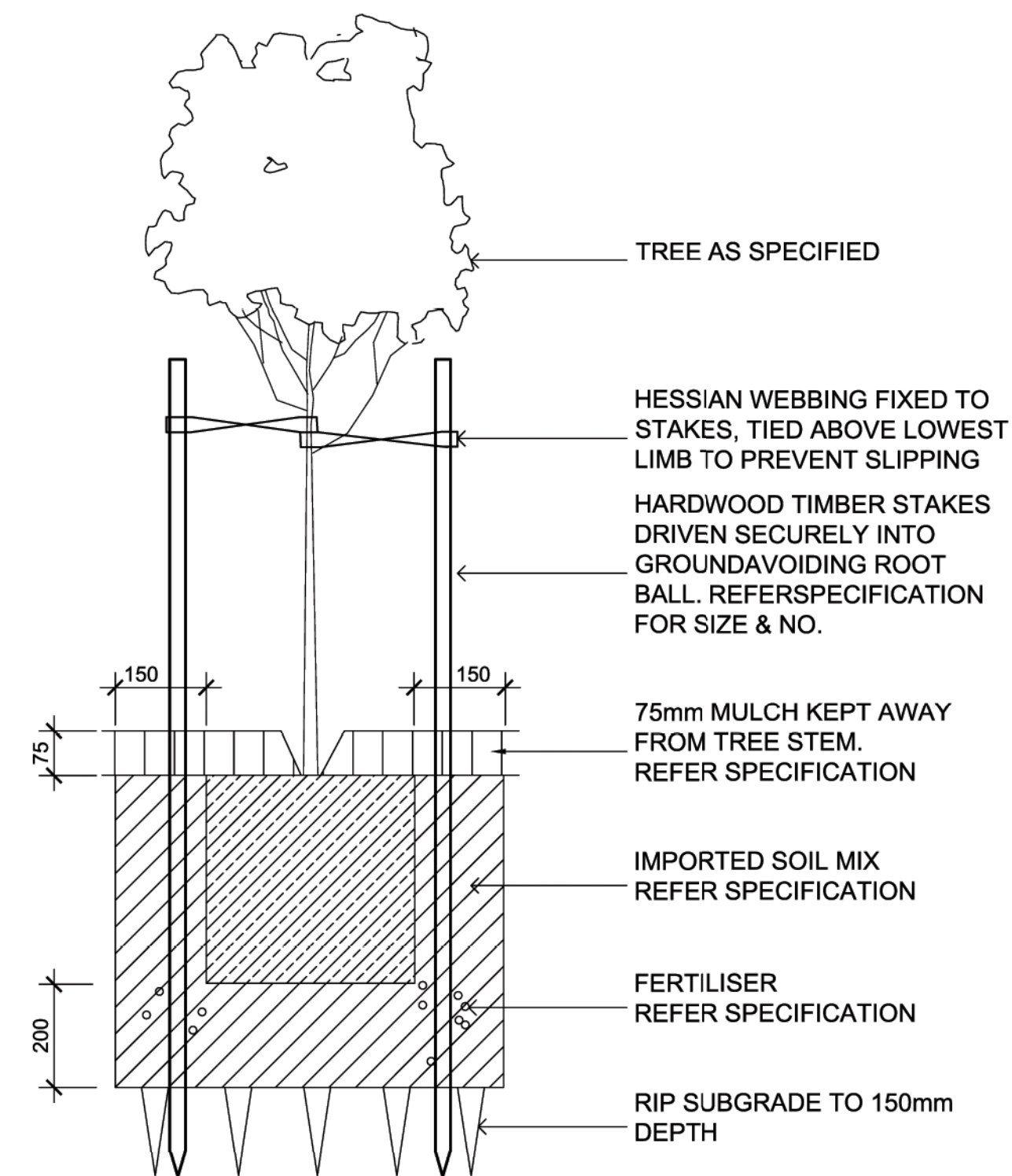
150mm - 20LITRE SHRUB PLANTING ON GRADE
SCALE 1:10



TURF ON GRADE
Scale 1:10



25 - 200L TREE PLANTING ON GRADE
SCALE 1:10



25-75 LITRE TREE PLANTING ON GRADE
SCALE 1:10

1.0 GENERAL NOTES

1.1 Workmanship and Materials

The whole of the landscape works shall be carried out by a competent Landscape Contractor who is experienced in horticultural practice, landscape construction and planting techniques. The Landscape Contractor shall hold a current Building Contractors License and / or be a financial member of the Landscape Contractors Association.

2.0 EXISTING TREES

2.1 Trees to be Retained and Protected

Identify and mark trees and shrubs to be retained using a suitable non-injurious, easily visible and removable means of identification. Trees to be retained are as shown on the landscape drawings. Protect from damage the trees and shrubs to be retained, including those beyond the site area, both above and below the ground. If a tree becomes damaged during the works or it is proposed to perform work on a tree, give written notice immediately and obtain instructions.

2.2 Work near Trees

Keep the area of the drip-line free from construction material and debris. Do not place bulk materials and harmful materials under or near trees. Do not place spoil from excavations against tree trunks. Prevent damage to tree trunks and bark. Do not attach stays, guys and the like to trees. Do not remove topsoil from, or add topsoil to, the area within the drip-line of trees.

3.0 SOFTSCAPE ELEMENTS

3.1 Soil Testing

Undertake at least two (2) soil tests, in locations as advised by Project Manager, and provide results and recommendations for the improvement of plant growth and to adjust the soil to achieve appropriate planting medium (including pit levels) for successful plant growth. Provide a complete chemical composition test equal to that provided by Sydney Environment and Soil Laboratory, telephone (02) 9980 6554.

3.2 Subsoil

Excavate all garden beds to bring the subsoil to at least 300mm below finished design levels. Shape the subsoil to fall to subsoil drains where applicable. Do not excavate within the drip line of trees to be retained. Excavate all turf and grass areas to bring the subsoil to at least 100mm below finished design levels. Shape the subsoil to fall to subsoil drains where applicable. Do not excavate within the drip line of trees to be retained. Cultivate the subsoil to a further depth of 100mm. Remove stones exceeding 25mm, clods of earth exceeding 50mm, and weeds, rubbish or other deleterious material brought to the surface during cultivation. Do not disturb services or tree roots, if necessary cultivate these areas by hand. During cultivation, thoroughly mix in materials required to be incorporated into the subsoil, as recommended in the soil testing results and to manufacturer's recommendations. Trim the surface to design levels after cultivation.

3.3 Topsoil

Import topsoil for the garden and turf areas, unless the topsoil can be provided from material recovered from the site, as recommended in the soil testing results.

Spread the topsoil on the prepared subsoil and grade evenly, compact lightly and uniformly in 150mm layers. Avoid differential subsidence and excess compaction and produce a finished topsoil surface which has the following characteristics:

- Finished to design levels, allowing for mulch or turf, which is to finish flush with adjoining hard surfaces such as paths and edge,
- Smooth and free from stones or lumps of soil,
- Graded to drain freely, without ponding, to catchment points,
- Graded evenly to adjoining surfaces, and
- Ready for planting.

3.4 Compost

Provide, in accordance with AS 4454, well rotted vegetative material or animal manure, free from harmful chemicals, grass and weed growth.

3.5 Fertiliser

Provide proprietary fertilisers, delivered to the site in sealed bags marked to show manufacturer or vendor, weight, fertiliser type, N/P/K ratio, recommended uses and application rates.

3.6 Plants

Supply plants in accordance with the landscape drawings and schedules, which have the following characteristics:

- Large healthy root systems, with no evidence of root curl, restriction or damage,
- Vigorous, well established, free from disease and pests, of good form consistent with the species or variety,
- Hardened off, not soft or forced, and suitable for planting in the natural climatic conditions prevailing at the site, and in particular shade conditions,
- Grown in their final containers for not less than twelve weeks,
- Trees, unless required to be multi-stemmed, shall have a single leading shoot, and
- Containers shall be free from weeds and of appropriate size in relation to their container.

3.7 Installation of Plants

Following excavation of the planting hole place and spread 15gms of wetting agent equal to 'terra-sorb', pre-mixed with one (1) litre of water, at the bottom of each planting hole. Backfill the planting holes with topsoil mixture. Lightly tamp and water to eliminate air pockets. Ensure the topsoil is not placed over the top of the rootball, so that the plant stem remains the same height above the ground as it was in the container. Apply fertiliser pellets, as recommended in the soil testing results and in accordance with the manufacturer's recommendations around the plants at the time of planting.

3.8 Mulching

Mulch shall be approved recycled mulch recovered from site clearing, if available, otherwise pine bark equal 'Horticultural Graded Pine Bark 15mm' as supplied by Australian Native Landscapes. Place mulch in all garden beds to a depth of 75mm, when all specified plants are installed, clear of all plant stems, and rake to an even surface flush with the surrounding finished levels and evenly graded between design surface levels. The specified depth shall be achieved after the mulch has settled.

3.9 Stakes and Ties

Stakes shall be durable hardwood, straight, free from knots or twists, pointed at one end, in the following quantities and sizes for each of the various plant pot sizes:

- Plants (≥25L): One (1) of 38 x 38 x 1200mm,
- Semi-advanced plants (≥75L): Two (2) of 50 x 50 x 1800mm, or
- Advanced (≥100L): Three (3) of 50 x 50 x 2400mm.

3.10 Turf

Turf shall be Soft Leaf Buffalo or approved equal, delivered to site as 25mm minimum thick cut rolls. Obtain turf from a specialist grower of cultivated turf. Provide turf of even thickness, free from weeds and other foreign matter. Deliver turf to the site within 24 hours of being cut, and lay it within 24 hours of delivery. Prevent it from drying out between cutting and laying. Lay the turf in the following manner:

- In stretcher pattern with the joints staggered and close butted,
- Parallel with the long sides of level areas, and with contours on slopes, and
- To finish flush, after tamping, with adjacent finished surfaces of ground, paving edges, and timber edges.

4.0 IRRIGATION

4.1 System

The irrigation system shall be an automatic fixed drip system, with an irrigation controller self operated via a soil moisture sensor. The system shall be compatible to the type of plant material and rates of water required. Where appropriate adjustable and fully serviceable. The layout of the entire irrigation is to ensure that each individual plant receives the required amount of water to maintain healthy and vigorous growth. The irrigation system shall be such that, component theft, vandalism, over-spray and wetting of paths shall be reduced to a minimum or completely eliminated by the use of drip, pop-up sprinklers and judiciously placed fixed spray emitters. Do not use fine mist type emitters that provide a drifting mist that may wet paths and the buildings.

5.0 PLANT ESTABLISHMENT

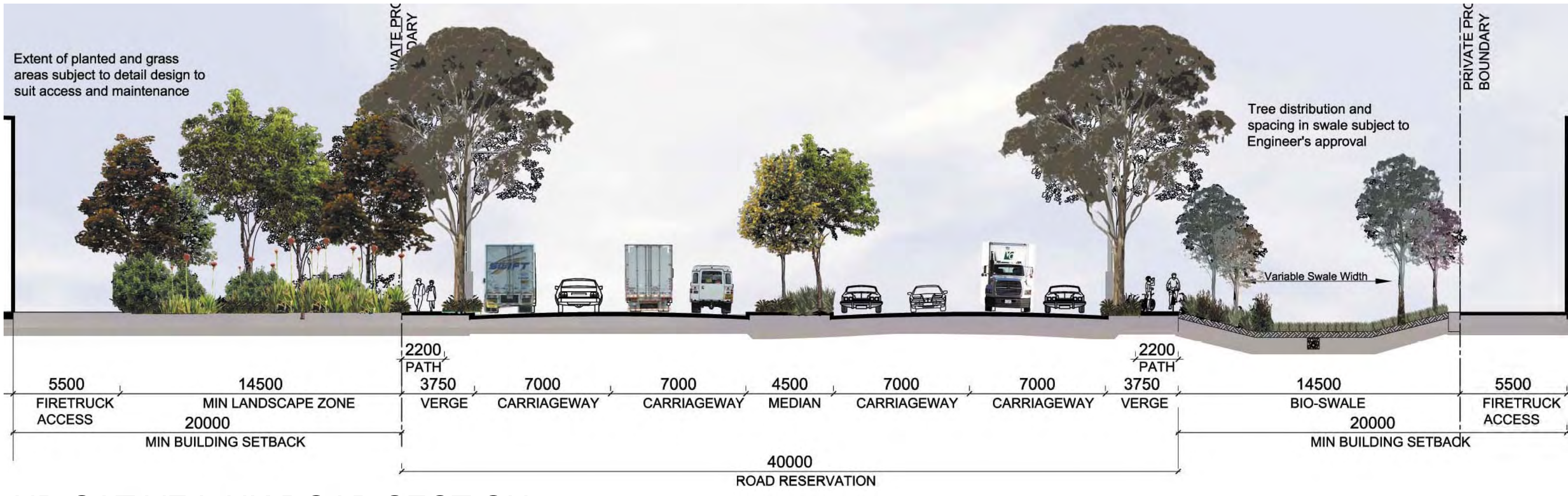
5.1 Generally

The Landscape Contractor shall rectify defects during installation and that become apparent in the works under normal use for the duration of the contract Defects Liability Period.

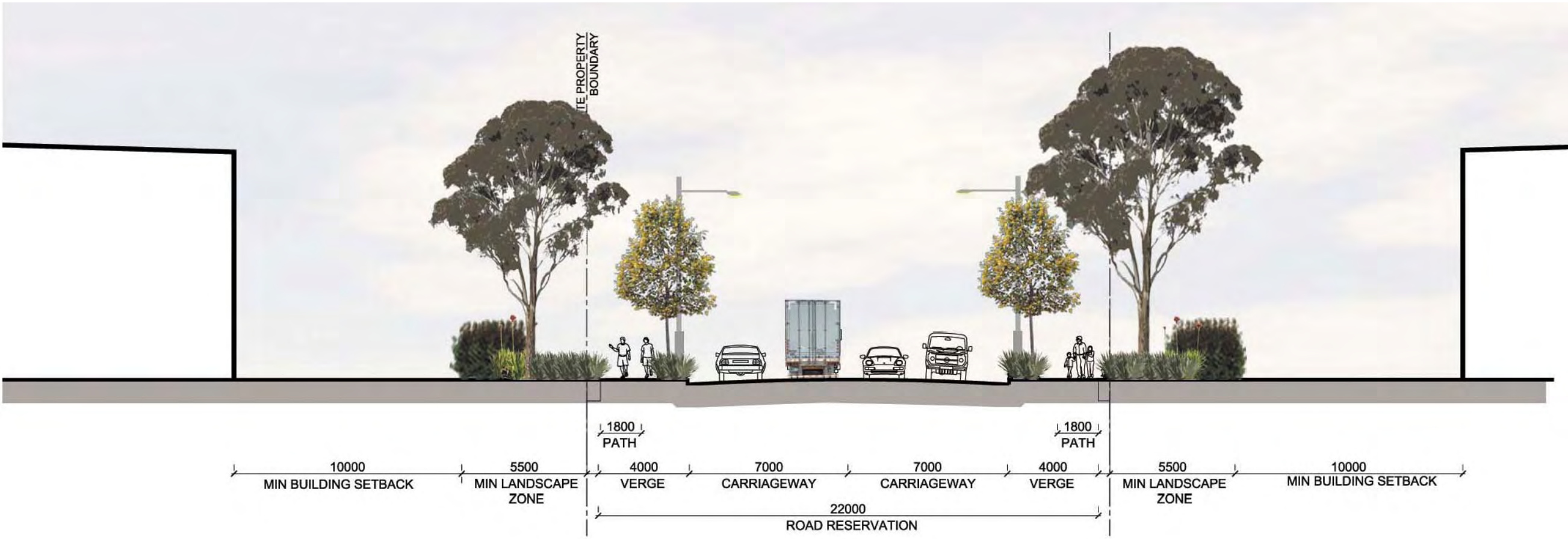
The Landscape Contractor shall maintain the contract areas by the implementation of industry accepted horticultural practices for 52 weeks. The landscape maintenance works shall include, but not be limited to, the following:

- Replacing failed plants,
- Pruning,
- Insect and pest control,
- Fertilising,
- Maintaining mulch,
- Mowing,
- Watering,
- Rubbish removal, and
- Cleaning of the surrounding areas.

SITE IMAGE



INDICATIVE LINK ROAD SECTION 1:200



INDICATIVE LOCAL ROAD SECTION 1:200

Indicative Plant Schedule

Botanical Name	Common Name	Height	Width	Spacing
Street Trees				
Entry and Signature Nodes				
<i>Araucaria cunninghamii</i>	Hoop Pine	45m	6m	8m
<i>Castanospermum australe</i>	Black Bean	18m	5m	8m
<i>Livistona australis</i>	Cabbage Tree Palm	20m	2m	8m
<i>Phoenix canariensis</i>	Canary Island Date Palm	15m	5m	8m
Link Road				
<i>Corymbia maculata</i>	Spotted Gum	25m	8m	20m
<i>Eucalyptus microcorys</i>	Tallow wood	30m	8m	20m
<i>Eucalyptus saligna</i>	Sydney Blue Gum	30m	5m	20m
Collector Road				
<i>Angophora costata</i>	Smooth Barked Apple	30m	10m	15m
<i>Lophostemon confertus</i>	Brush Box	30m	5m	15m
<i>Eucalyptus citriodora</i>	Lemon-scented Gum	to 40m	4m	15m
<i>Waterhouseia floribunda</i>	Weeping Lilly Pilly	15m	8m	15m
Local Road				
<i>Acmena smithii</i>	Lilly Pilly	15m	6m	15m
<i>Cupaniopsis anacardioides</i>	Tuckeroo	10m	4m	15m
<i>Tristaniopsis laurina</i>	Water Gum	10m	7m	15m
Open Space / Canopy Trees				
<i>Acacia decurrens</i>	Green Wattle	10m	5m	
<i>Acacia parramattensis</i>	Parramatta Wattle	7m	4m	
<i>Angophora floribunda</i>	Rough-barked Apple	15m	6m	
<i>Backhousia myrtifolia</i>	Grey Myrtle	3.5m	2m	
<i>Casuarina glauca</i>	Swamp oak	15m	5m	
<i>Eucalyptus amplifolia</i>	Cabbage Gum	to 30m	5m	
<i>Eucalyptus citriodora</i>	Lemon-scented Gum	to 40m	4m	
<i>Eucalyptus crebra</i>	Narrow leafed Ironbark	20m	10m	
<i>Eucalyptus eugenoides</i>	Thin leafed- Stringybark	20m	10m	
<i>Eucalyptus fibrosa</i>	Red Iron Bark	20m	8m	
<i>Eucalyptus maculata</i>	Spotted Gum	20m	10m	
<i>Eucalyptus moluccana</i>	Grey Box	30m	12m	
<i>Eucalyptus microcorys</i>	Tallow wood	30m	8m	
<i>Eucalyptus paniculata</i>	Grey Ironbark	25m	6m	
<i>Eucalyptus robusta</i>	Swamp Mahogany	25m	5m	
<i>Eucalyptus tereticornis</i>	Forest Red Gum	30m	5m	
<i>Melaleuca decora</i>	White Feather Honeymyrtle	10m	8m	
<i>Melaleuca linearifolia</i>	Flax Leaf Paperbark	10m	4m	
<i>Melaleuca quinquenervia</i>	Broad-leafed Paperbark	25m	10m	
<i>Melaleuca styphelioides</i>	Prickly leaved Paper Bark	20m	6m	
<i>Syncarpia glomifera</i>	Turpentine	40m	8m	

Botanical Name	Common Name	Height	Width	Spacing
Groundcovers				
<i>Arthropodium milleflorum</i>	Pale Vanilla-lily	0.3m	0.3m	
<i>Asperula conferta</i>	Common Woodruff	0.15m	0.2m	
<i>Brunoniella australis</i>	Blue Trumpet	0.3m	0.4m	
<i>Cheilanthes sieberi</i>	Narrow Rock Fern	0.3m		
<i>Dichondra repens</i>	Kidney Weed	0.1m	0.3m	
<i>Goodenia hederacea</i>	Forest Goodenia	0.3m	1m	
<i>Hardenbergia violacea</i>	Purple Twining Pea	vine		
Shrubs and Accents				
<i>Bursaria spinosa</i>	Blackthorn	2m	1m	
<i>Correa alba</i>	Correa	1m	1.5m	
<i>Daviesia ulicifolia</i>	Gorze Bitter Pea	1.5m	1m	
<i>Dillwynia juniperina</i>	Prickly Parrot-pea	1m		
<i>Dodonaea viscosa ssp cuneata</i>	Sticky Hop Bush	3m	2m	
<i>Doryanthes excelsa</i>	Gymea Lily	4m	1.5m	
<i>Grevillea poorinda 'Royal Mantle'</i>	Grevillea	0.2m	2m	
<i>Indigofera australis</i>	Australian Indigo	2.5m	2m	
<i>Kunzea ambigua</i>	White kunzea	2m	2m	
<i>Melaleuca nodosa</i>	Melaleuca	6m	2m	
<i>Westringia fruticosa</i>	Coastal Rosemary	1.5m	1.5m	
Grasses				
<i>Chloris truncata</i>	Windmill Grass	0.5m		
<i>Chloris ventricosa</i>	Plump Windmill Grass	1m		
<i>Cyperus gracilis</i>	Slender Sedge	0.4m		
<i>Dianella longifolia</i>	Blue Flax-lily	0.8m	0.5m	
<i>Dianella revoluta</i>	Black Anther Flax-lily	1m	1m	
<i>Dichelachne micrantha</i>	Shorthair Plumegrass	0.6m	0.5m	
<i>Echinopogon caespitosus</i>	Bushy Hedgehog grass	1.5m		
<i>Echinopogon ovatus</i>	Forest Hedgehog grass	1.2m		
<i>Lomandra filiformis</i>	Wattle Mat-rush	0.25m	.2m	
<i>Lomandra multiflora</i>	Many flowered Mat-rush	0.75m	0.75m	
<i>Microlaena stipoides</i>	Weeping Grass	0.3m	0.6m	
<i>Opismenus aemulus</i>	Basket Grass	0.4m	0.3m	
<i>Poa labillardieri</i>	Tussock Grass			
<i>Themeda australis</i>	Kangaroo Grass	0.5m	0.4m	
<i>Tricoryne elatior</i>	Yellow Rush-lily	0.4m	0.25m	
Swale Planting				
<i>Carex appressa</i>	Tall Flat Sedge	0.7m	0.6m	
<i>Carex gaudichandiana</i>	Tufted Sedge	0.6m	0.4m	
<i>Juncus usitatus</i>	Common Rush	0.6m	0.4m	
<i>Lomandra longifolia</i>	Spiny-Headed Mat Rush	1m	1m	
<i>Isolepis nodosa</i>	Knobby Club Rush	0.8m	0.7m	



Corymbia maculata



Eucalyptus microcorys



Syncarpia glomifera



Acmena smithii



Westringia fruticosa



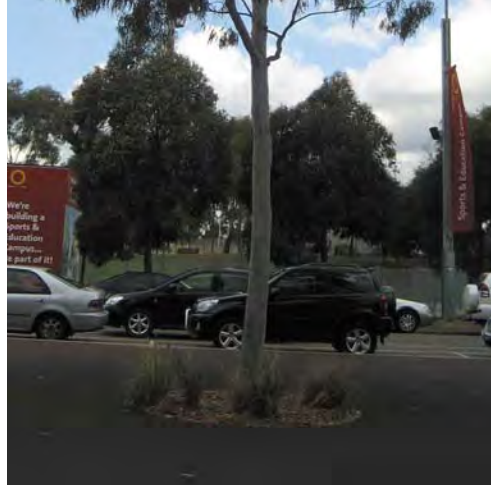
Westringia fruticosa



Lophostemon confertus



Tristaniopsis laurina



Eucalyptus citriodora



Melaleuca quinquenervia



Dianella longifolia



Lomandra longifolia



Anthopodium milleflorum



Hardenbergia violacea



Grevillea poorinda 'Royal Mantle'



Doryanthes excelsa



Dianella revoluta



Poa labillardieri

INDICATIVE PLANTING PALETTE

SITE IMAGE