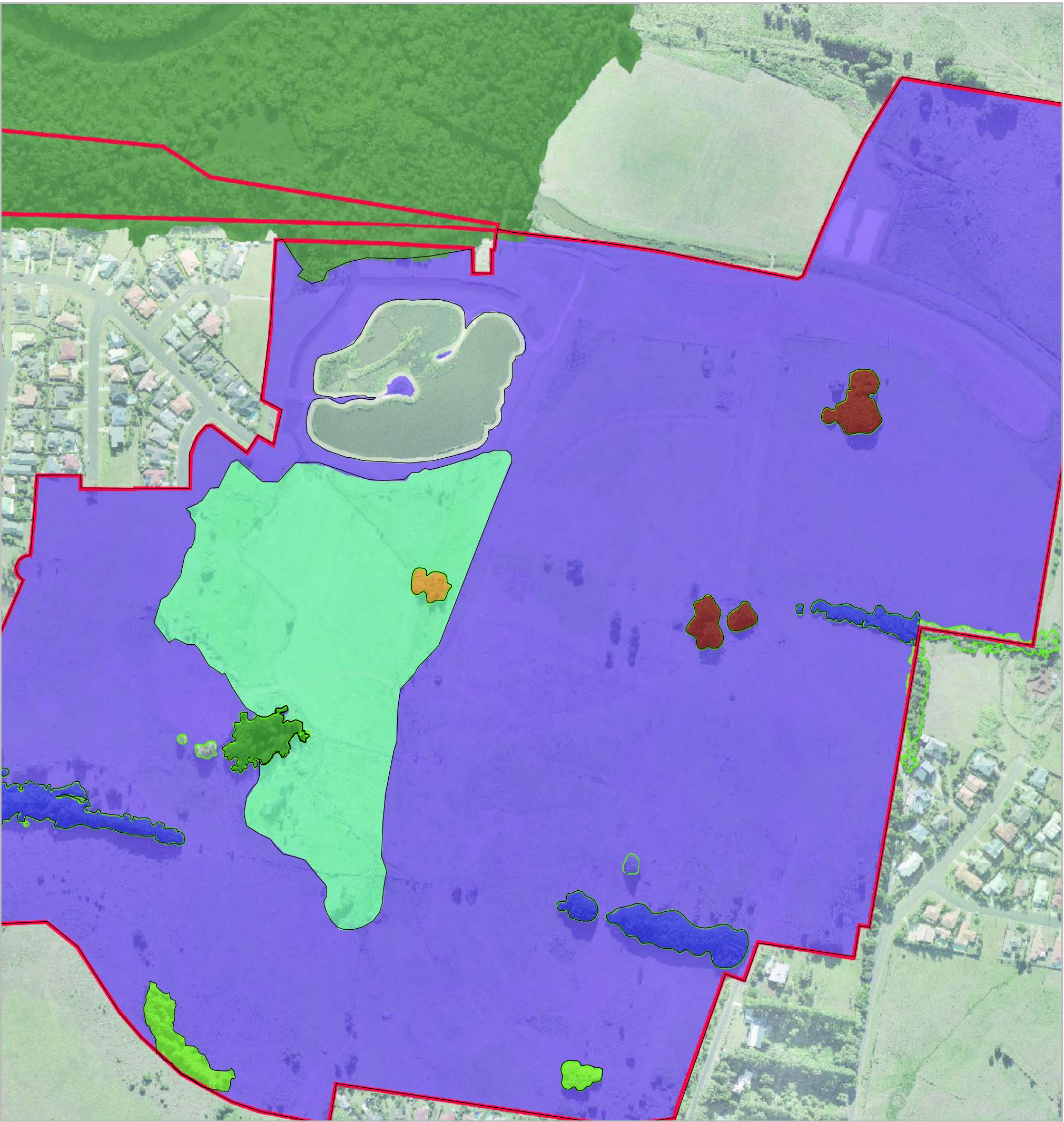


LEGEND

- Moreton Bay Fig
(*Ficus macrophylla*)
- Swamp oak floodplain forest
- Swamp sclerophyll forest on coastal floodplain
- Littoral rainforest in the NSW North Coast bioregion
- Regrowth rainforest / Camphor Laurel
- Sedgeland / rushland
- Low closed grassland
- Site boundary



Vegetation Communities