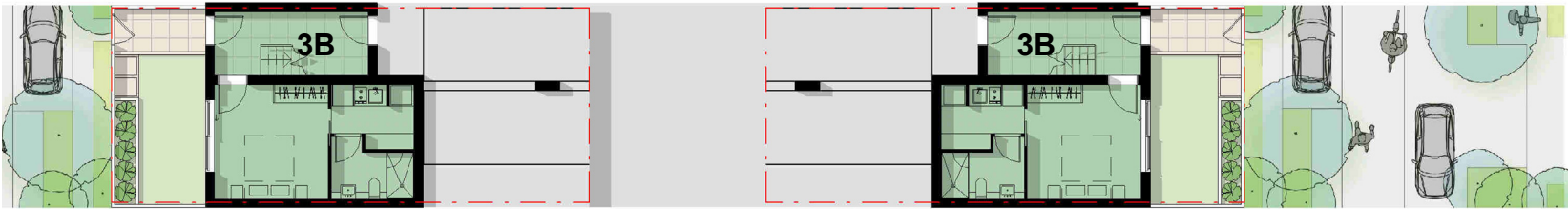
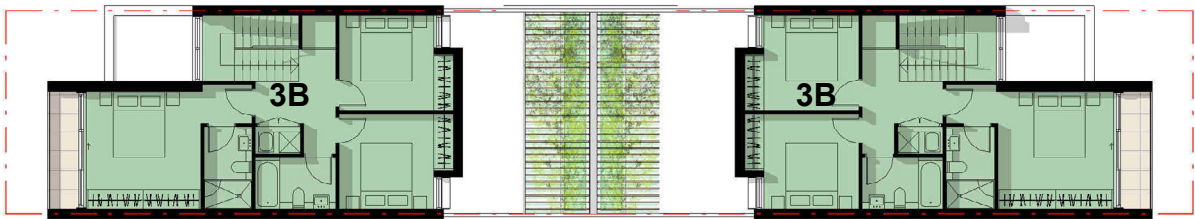


INDICATIVE TOWNHOME MODULE EXAMPLE 3

Another potential townhome module design is illustrated below



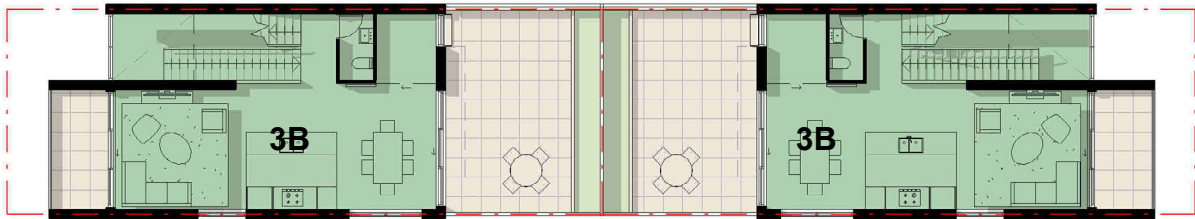
GROUND FLOOR



SECOND FLOOR



TYPICAL SECTION

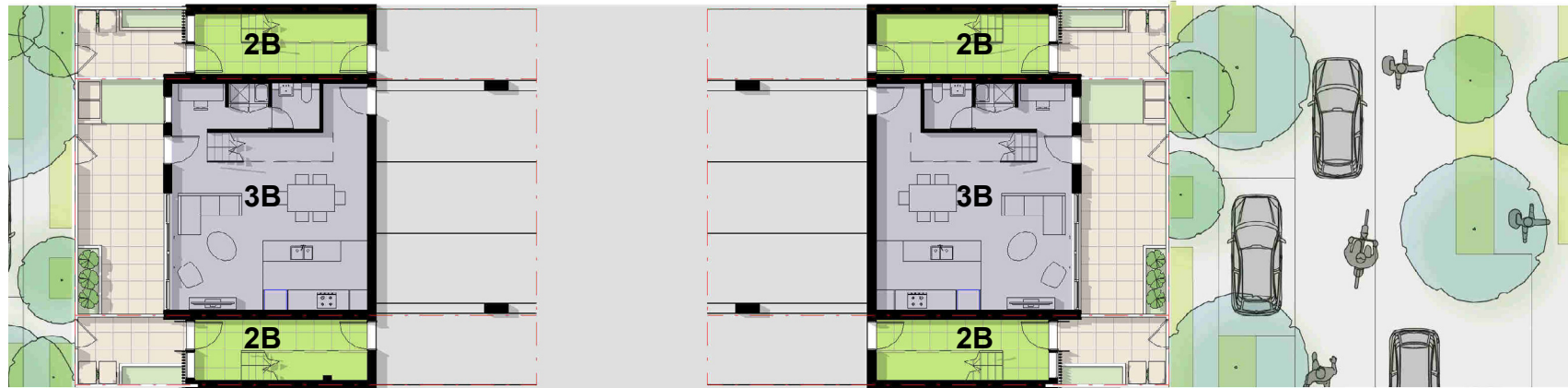


FIRST FLOOR

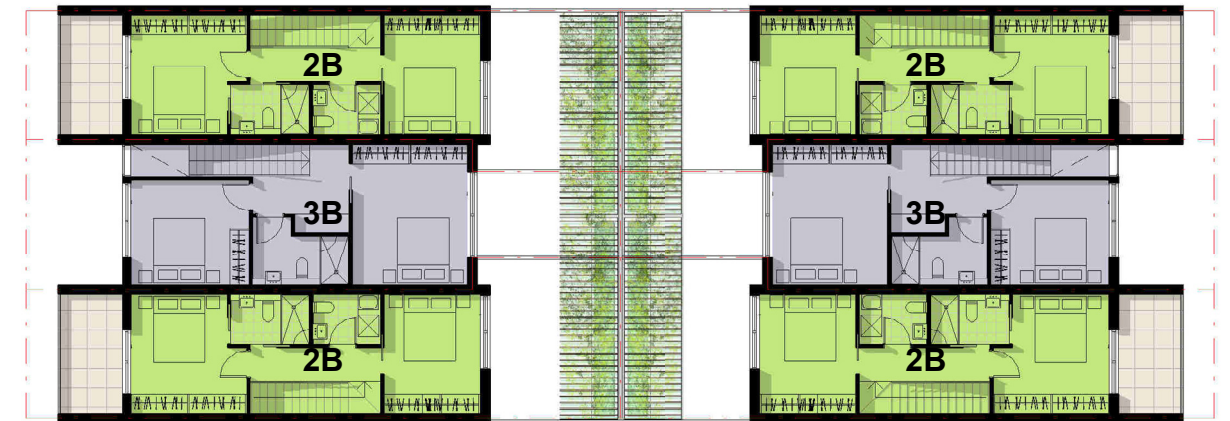
3 storey townhome module, 1 dwelling of 4 bedrooms and 2 car spaces.
This module has the flexibility to provide a self contained office at ground floor.

INDICATIVE TOWNHOME MODULE EXAMPLE 4

Another potential design is illustrated bellow.



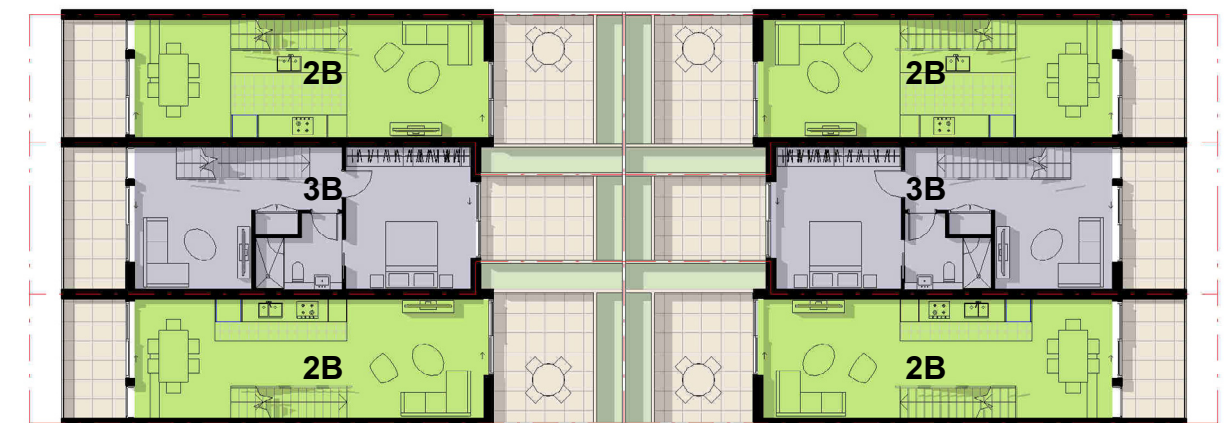
GROUND FLOOR



SECOND FLOOR



TYPICAL SECTION



FIRST FLOOR

3 storey townhome module consisting of 3 distinct dwellings:

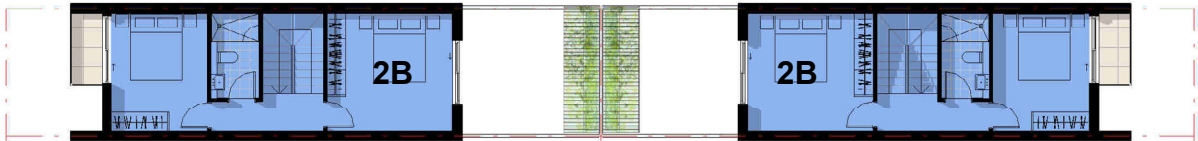
- > 2 bed – 1 car space
- > 3 bed – 2 car spaces
- > 2 bed – 1 car space

INDICATIVE TOWNHOME MODULE EXAMPLE 5

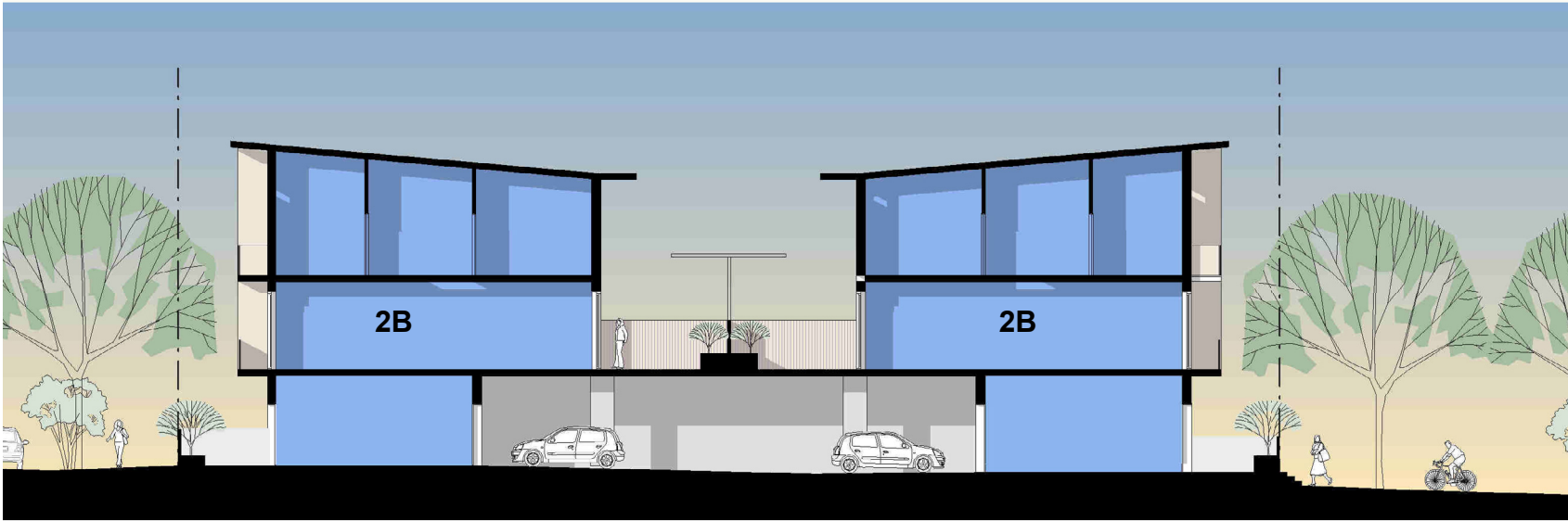
An example of a potential design for a 3 storey 3 bedroom townhome module is illustrated bellow.



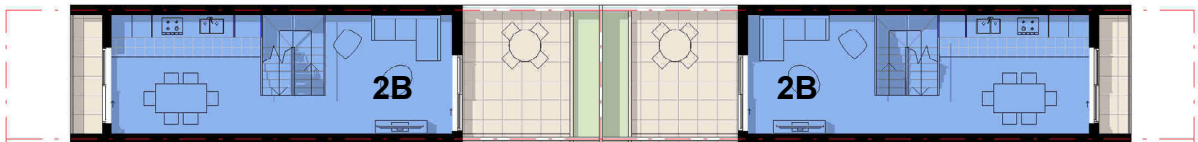
GROUND FLOOR



SECOND FLOOR



TYPICAL SECTION



FIRST FLOOR

3 storey townhome module, 1 dwelling of 2 bedrooms and 1 car space.

Note: Further townhome examples and module variations may be developed during the design process

OVER
TERR

TERRACE HOUSE +
STUDIO DWELLINGS

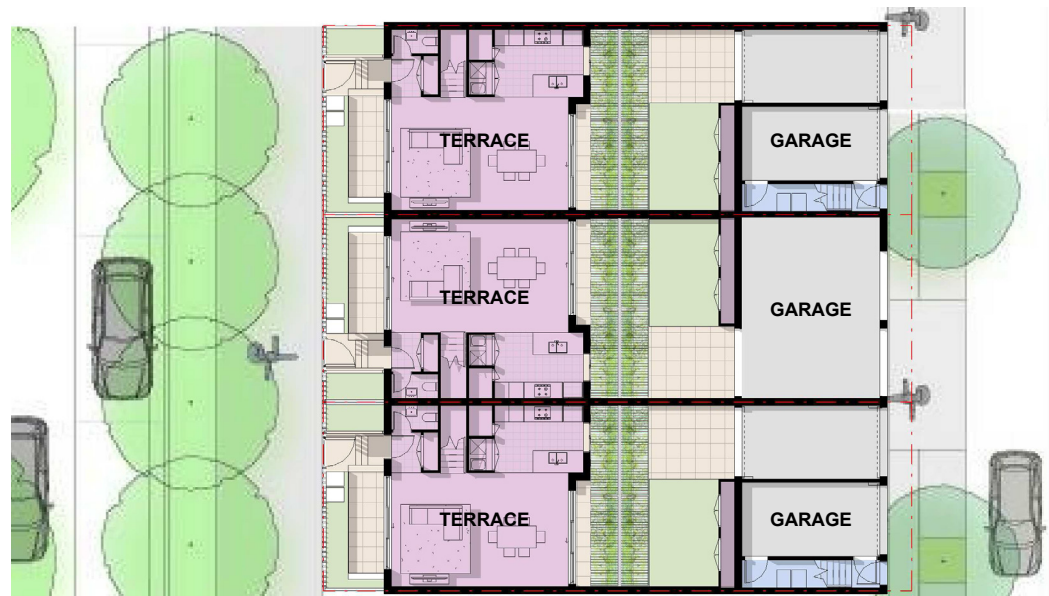


INDICATIVE TERRACE AND STUDIO DWELLING MODULES

The terrace forms in the illustrative design scheme face parts of the Greenway and also Henderson Road, with the car parking entry to the rear from the local street.

The Terraces are two storeys in height with garages to the rear. The studios are located with their entries facing the local streets at ground and their main area upstairs above the garage. The terraces are separated from the studio dwellings by private courtyards part of which could be multipurpose spaces that could accommodate parking for the terraces. The studio dwellings located above the garages will be separately titled.

The terraces and studio dwellings will be organised into short runs as attached dwellings which provide breaks for visual and physical connections.



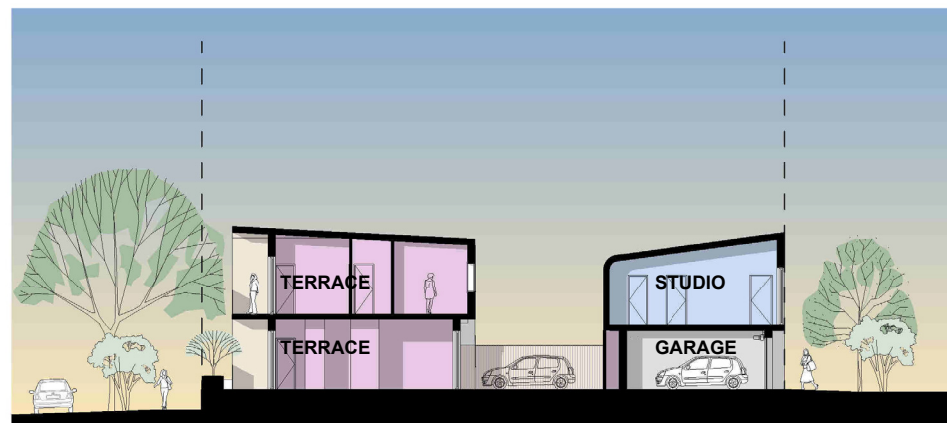
TERRACE MODULE GROUND FLOOR

TERRACE HOUSE / STUDIO DWELLING

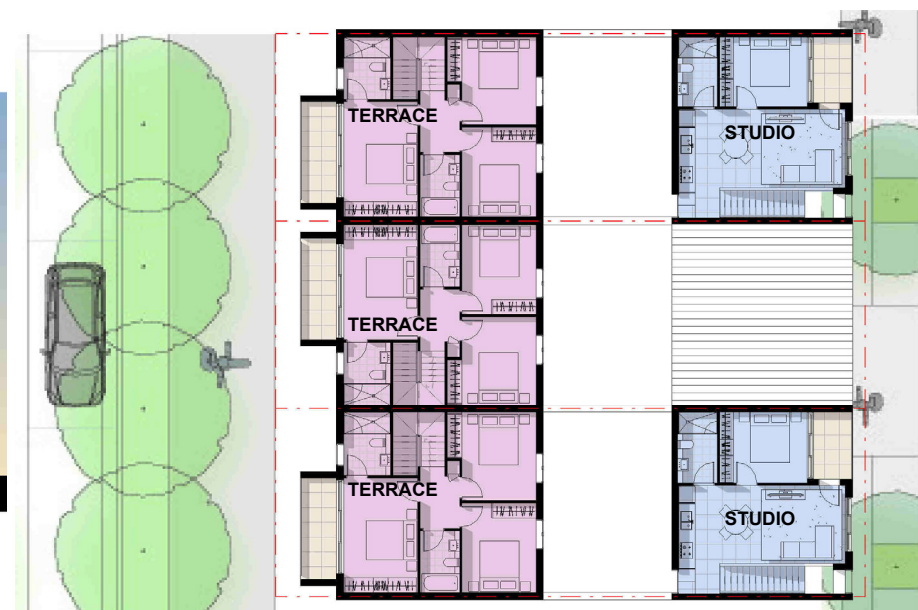
The character of the Terrace / Studio dwelling will have a scale and proportion that reflects Edmondson Park's premium residential product, it will be rich in material and nuanced in detail. The very best of Edmondson Park living.

Terrace houses / studio dwellings will be 2 distinct dwellings:

- > 3 Bed - 2 car space
- > 1 Studio - 1 car space



TERRACE MODULE SECTION



TERRACE MODULE FIRST FLOOR

05
ACI

ACTIVATION OF
CAMPBELLTOWN
ROAD