

## INDICATIVE BLOCK GROUND FLOOR

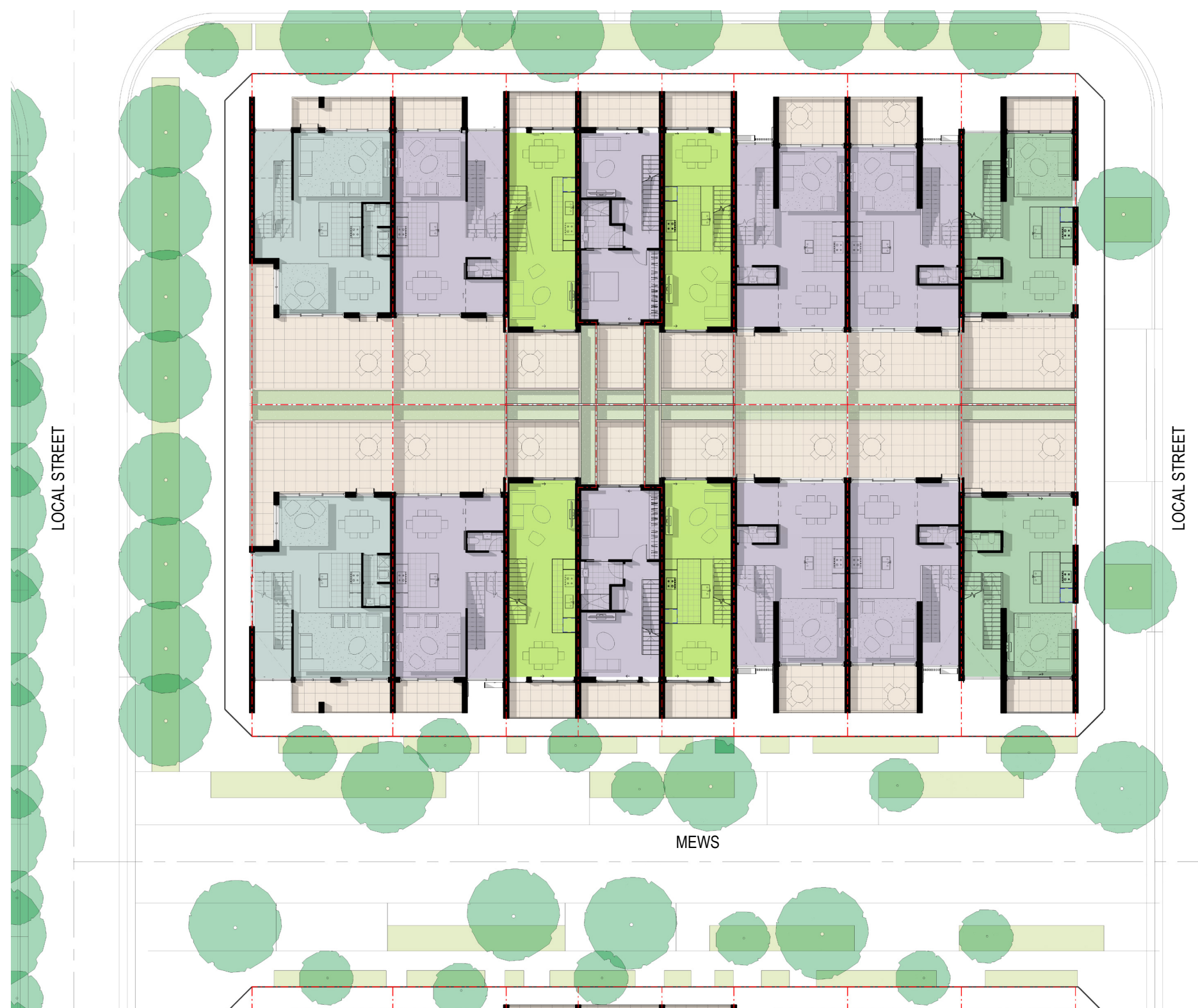
Ground floor dwellings are sleeved around an at-grade carpark which is not visible from the Mews.

There is one point of entry and exit to each of these blocks which faces onto a local street and not to the Mews to minimize it's impact.

Activating the Mews community road are all the dwellings front door, be they to the ground floor dwellings or entryways to the townhomes above. All dwellings also have direct access to their car parking behind.

- > Front Access
- <-----> Access to Carpark
- > Carpark Access

Figure 3: Indicative typical Block Ground Floor

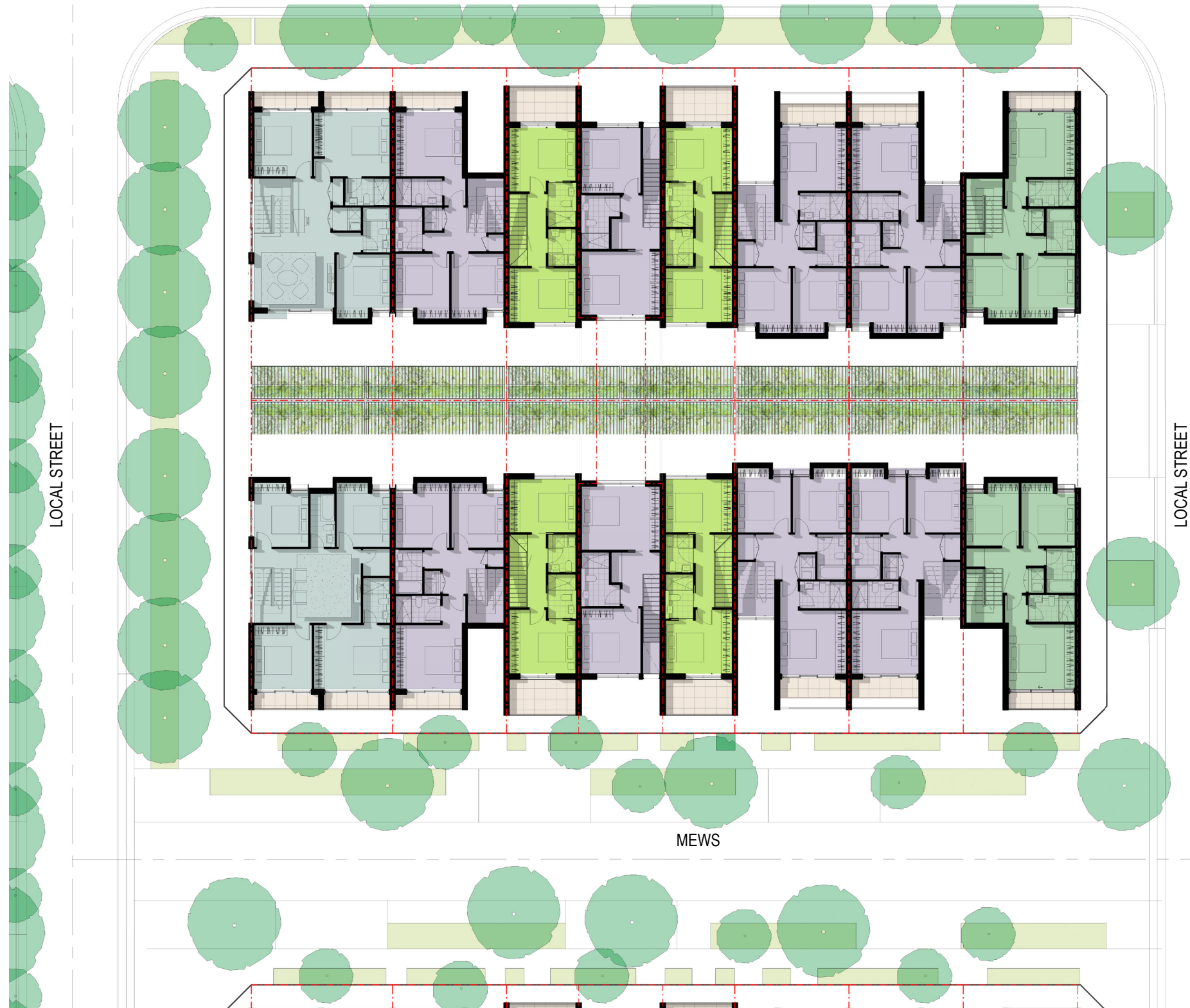


## INDICATIVE BLOCK FIRST FLOOR

These townhomes have a variety of two, three and four bedroom configurations with their primary outdoor private space to the rear over the car parking as well as balconies facing the Mews. The first floors typically have a flow through living, dining, kitchen area to maximise the utilisation of both these private open space areas.

Figure 4: Indicative typical Block First Floor





## INDICATIVE BLOCK SECOND FLOOR

The upper floors are typically where the bedrooms are located.

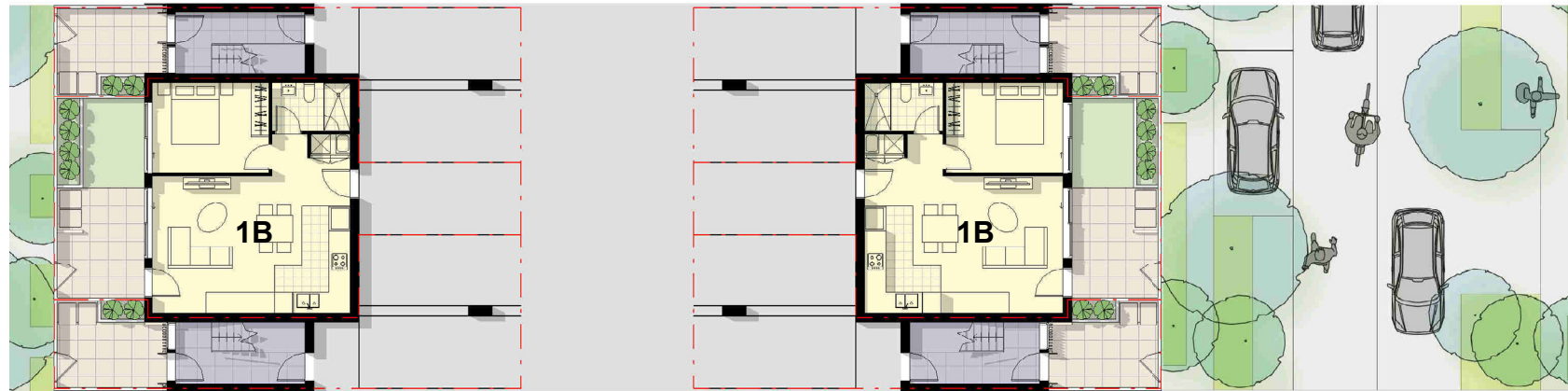
In order to provide privacy and shading to the bedrooms as well as the main private open space, the use of architectural and landscape elements will be incorporated.

Where possible windows looking into private open spaces will be offset to improve the privacy.

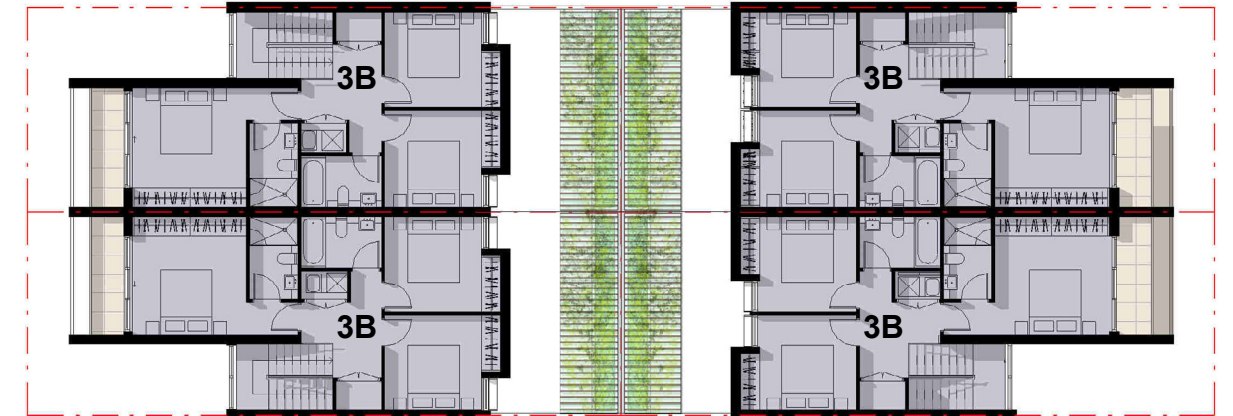
Figure 5: Indicative typical Block Second Floor

# INDICATIVE TOWNHOME MODULE EXAMPLE 1

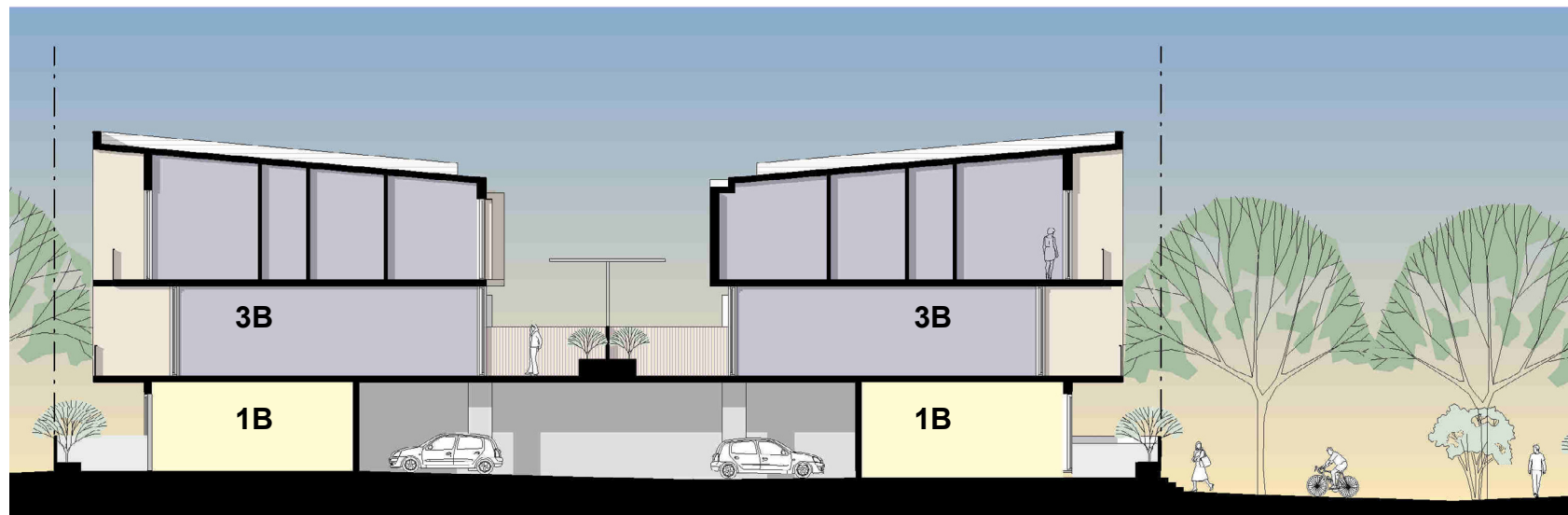
One potential design example for the townhome product is illustrated below.



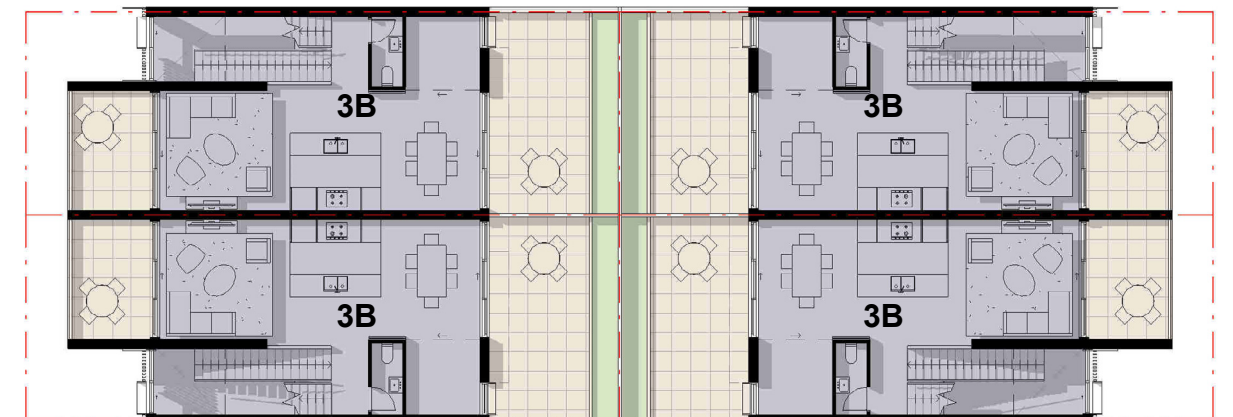
GROUND FLOOR



SECOND FLOOR



TYPICAL SECTION



FIRST FLOOR

3 storey townhome module consisting of 3 distinct dwellings:

- > 3 bed – 2 car spaces
- > 1 bed – 1 car space
- > 3 bed – 2 car spaces

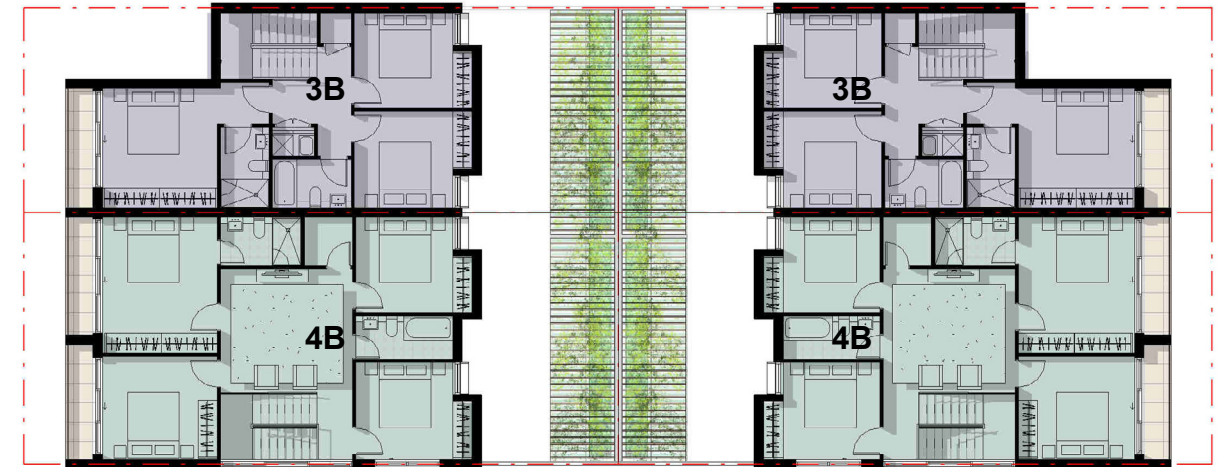


## INDICATIVE TOWNHOME MODULE EXAMPLE 2

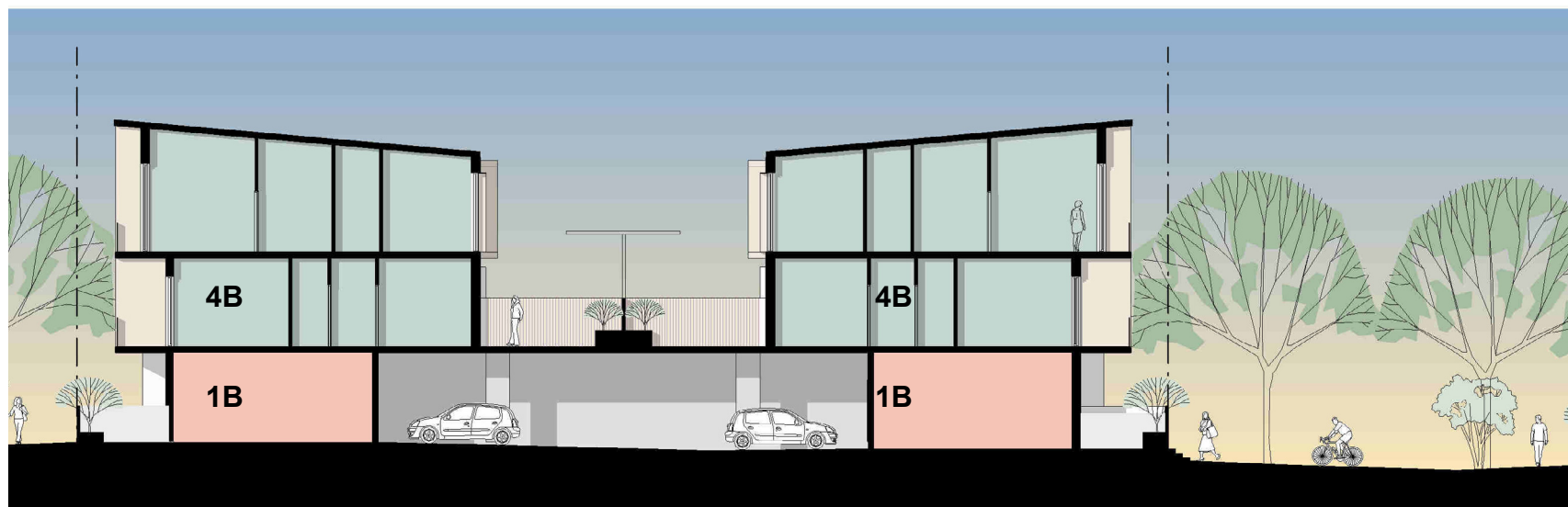
A second design example for the townhome product is illustrated below.



GROUND FLOOR



SECOND FLOOR



TYPICAL SECTION



FIRST FLOOR

3 storey townhome module consisting of 3 distinct dwellings:

- > 3 bed – 2 car spaces
- > 1 bed flexi– 1 car space
- > 4 bed – 2 car spaces

Capable to provide universal or adaptable dwelling at ground floor.