



Multi-functional, active and passive recreation



Multi-sport facilities - skateboarding and soccer



Engaging with nature



Water play



Exercise equipment



Outdoor ping-pong



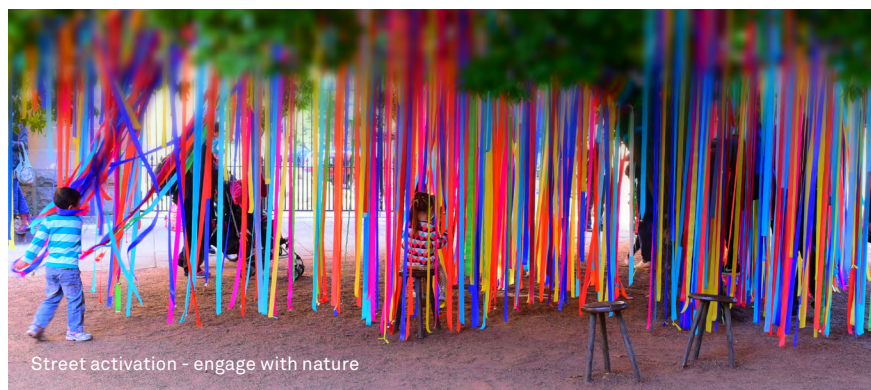
Street activation - swings



Playground



Street activation - folly



Street activation - engage with nature



Street activation - folly



Street activation - folly



Street activation - folly

Principles & Character

03



Public Domain Principles and Character Preamble

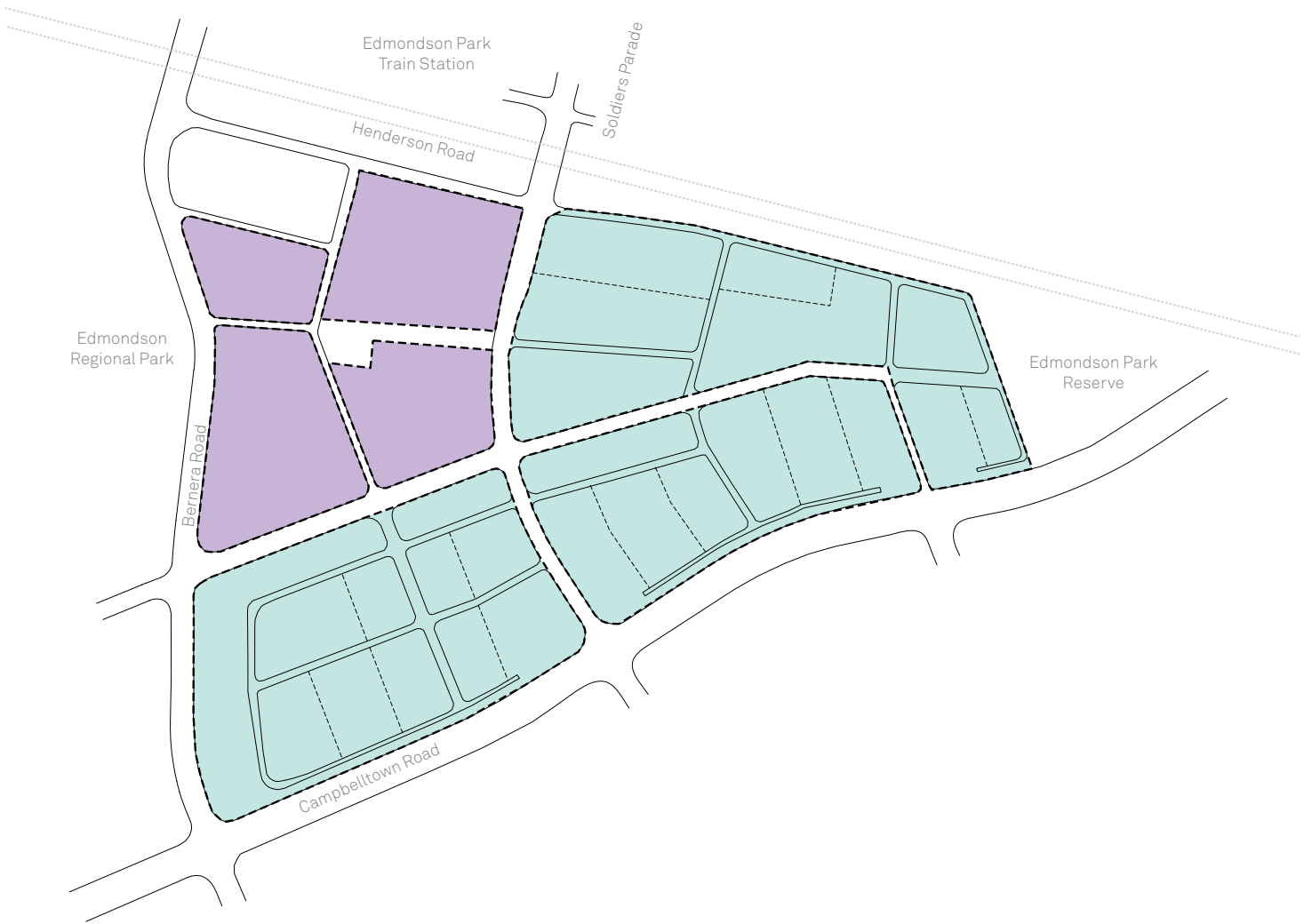
The purpose of this section of the Public Domain Plan is to guide and coordinate the design and construction of improvements to the public domain at Edmondson Park Town Frasers Centre including;

- _Community parks
- _Community pocket parks
- _Edmondson Park Frasers Town Centre Reserve
- _Community title streets
- _Public streets

This chapter illustrates character and function of each area of open space, including;

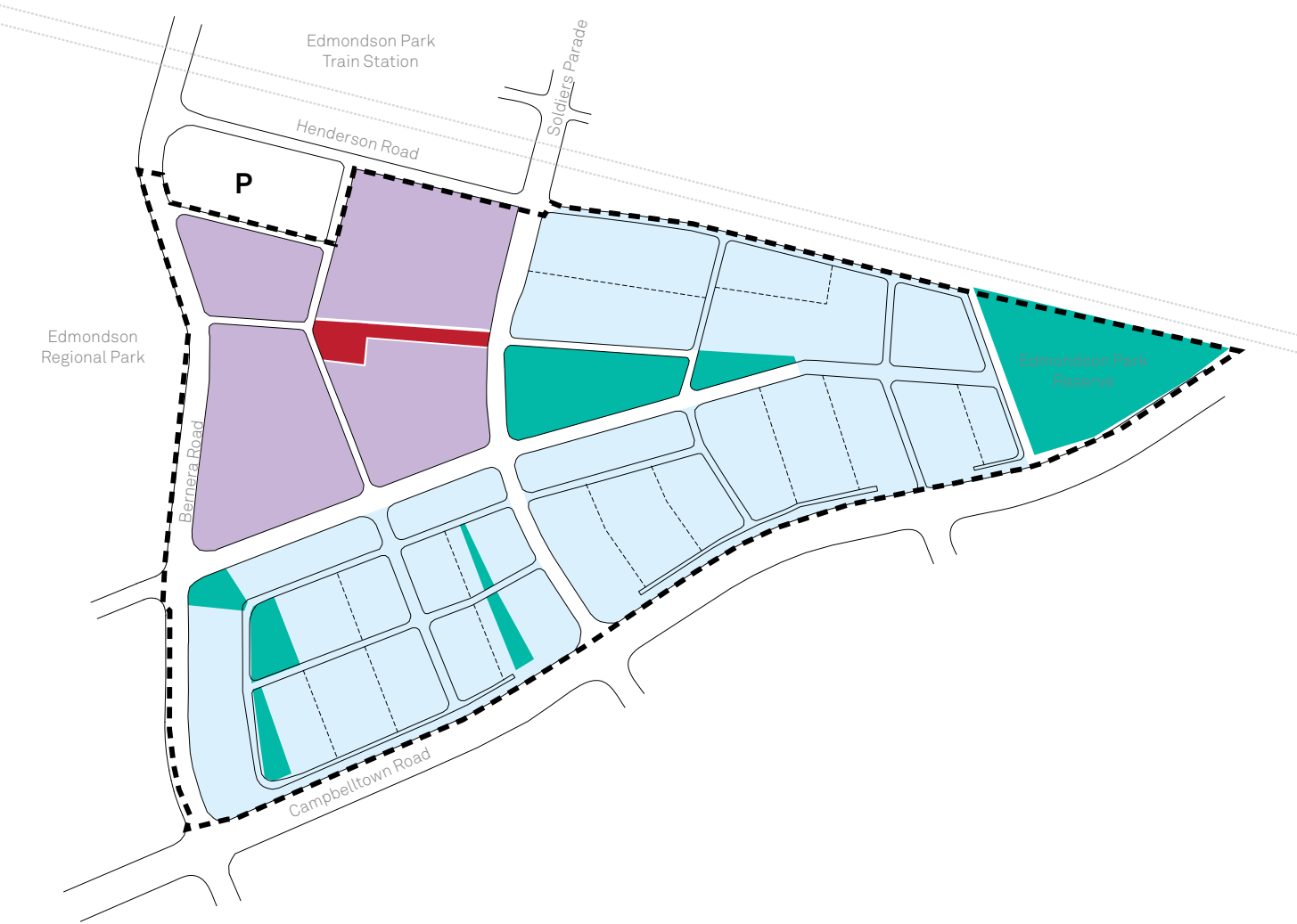
- _Colour palette
- _Planting palette
- _Material palette
- _Key dimensions

The planting, lighting and finishes are not restricted only to the recommendations identified in this plan and may be expanded as the detailed design process progresses.



Precinct Staging Plan

	Town Centre Core Precinct
	Residential Precinct



Illustrative Structure Plan

- Edmondson Park Frasers Town Centre Site Boundary
- Town Centre Core Mixed Use
- Residential Precinct
- Open Space and Resident Community Facilities
- Town Square & Eat Street
- P Commuter Parking



Open Space Plan

- Edmondson Park Frasers Town Centre Site Boundary
- Town Square
- Eat Street
- Town Park / Local Park / Resident EP Community Facilities
- Pocket Parks
- Edmondson Park Reserve
- Note: Publicly accessible through site links will also be located within the Town Centre Core



Pedestrian and Cycle Plan

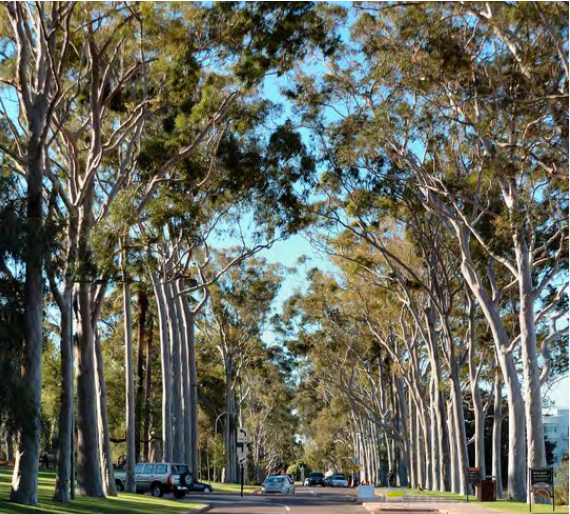
- Edmondson Park Frasers Town Centre Site Boundary
- Shared Path
- Main Pedestrian Links
- Existing Roundabout
- Existing signalised intersection
- Signalised intersection
- Feature treatment at signalised intersection
- Existing Non signalised Crossing
- Potential Non signalised Crossing



Street Network Plan

- Edmondson Park Frasers Town Centre Site Boundary
- Tree Lined Boulevards
- Native Neighbourhood & Town Centre Streets
- Local Streets
- Picturesque Mews

Tree Lined Boulevards



Colour Palette

Colours within Eucalypt Boulevards reference shades of the surrounding Cumberland Plain Woodland. Vegetation shall consist of dark olive foliage, bleached cream trunks, pops of light golden flowers in canopies and violet flowers in the groundplane. The hardscape shall be light in colour, animated by dappled shade from overhead canopies.

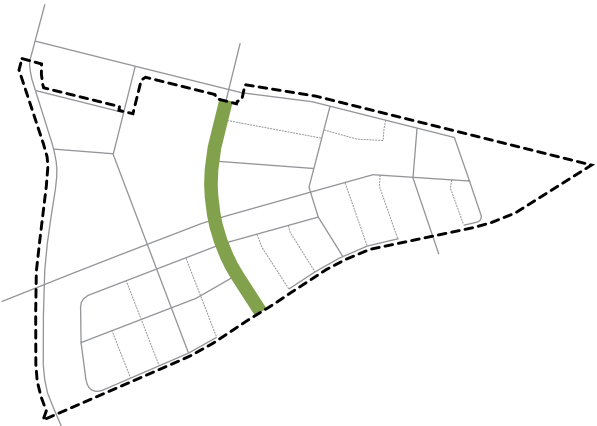
Planting

Tree planting along these main precincts streets will be planted out in a formal grid of tall Eucalypts, uniting Edmondson Park Reserve with Edmondson Regional Park. The tree canopies will be the unifying element, a ‘continuous canopy’ or ‘green ceiling’, which will extend along the length of precinct.

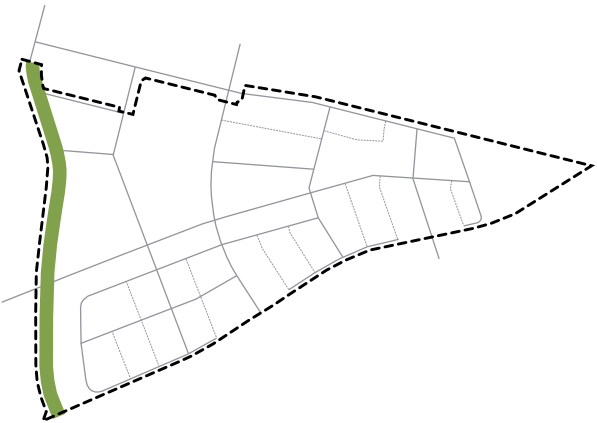
A verdant green tapestry of understory planting will soften the verges and medians, planting will include a palette of native grasses. Grasses are shall be compact in habit and low maintenance.

Materiality

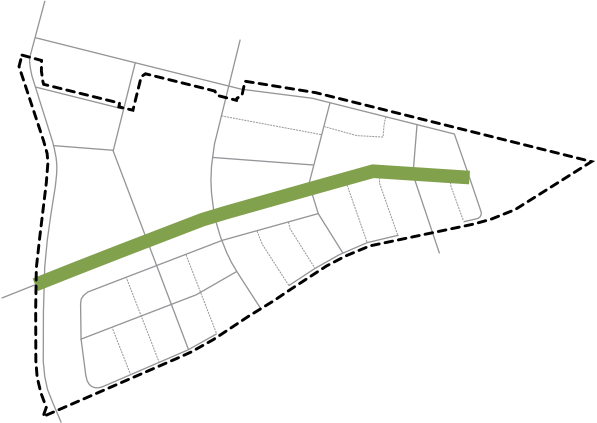
The material palette along Eucalypt Boulevards will be refined and considered. Materials along shall be robust and hard wearing.



Soldiers Parade



Bernera Road



Greenway

Recommended Tree Planting



Corymbia maculata



Corymbia citriodora



Fraxinus raywoodii Claret Ash



Fraxinus pennsylvanica Urbanite



Fraxinus griffithii

Recommended Understory Planting



Dianella longifolia



Dianella revoluta



Dianella caerulea



Lomandra longifolia

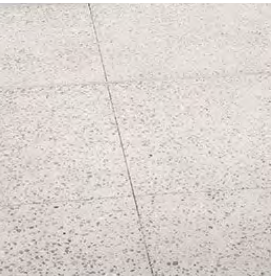


Poa labillardieri

Recommended Landscape Finishes



Standard white in-situ concrete pedestrian paths



In-situ concrete pedestrian paths



In-situ concrete pedestrian paths with exposed aggregate



Trafficable pavement sets

Recommended Lighting



LED street light with banner fixing



LED street light

Note: The planting, lighting and finishes are not restricted only to the recommendations identified in this plan and may be expanded as the detailed design process progresses

**Bernera Road
Indicative Section**

Bernera Road is a regionally important road, connecting and providing access to the Town Centre from surrounding residential areas.

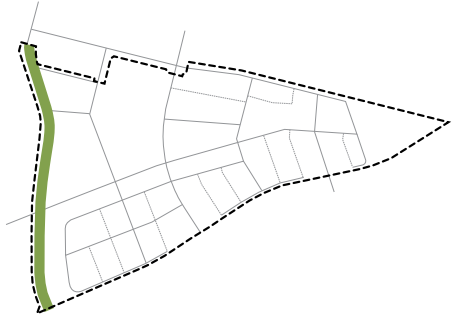
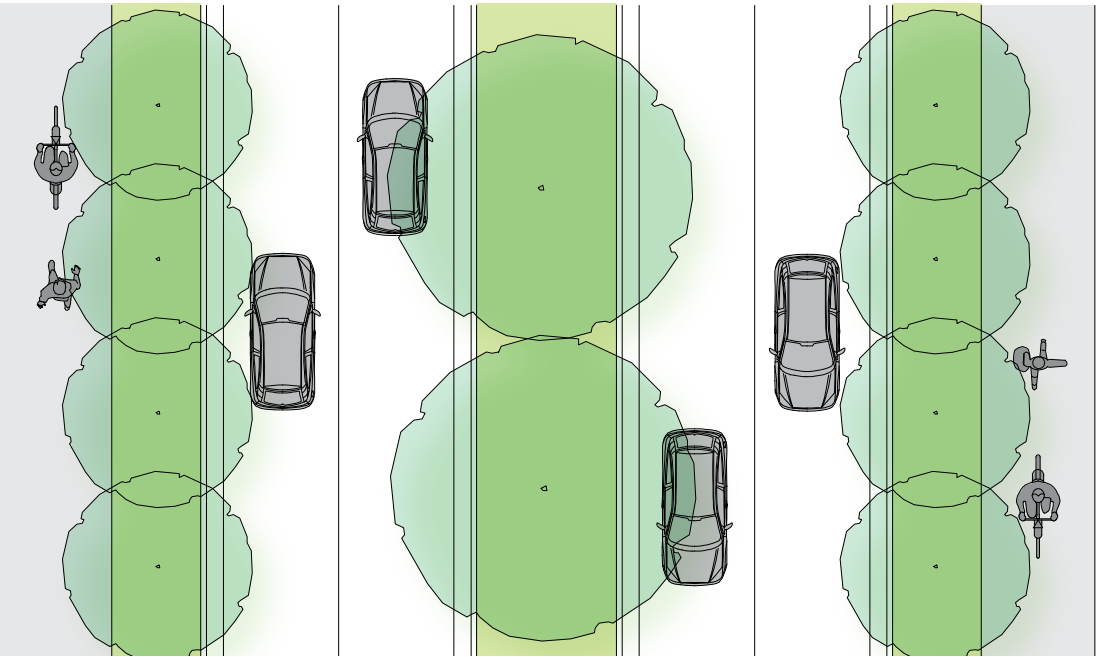
Located adjacent to bushland, Bernera Road has an avenue of tree planting and a shared pedestrian/cycle path along the park edge.

Traffic lanes are proportioned to allow for the higher speed movement of vehicles and access to and from basement parking in the town centre.



3.0	Varies					Varies	3.0
Shared path	Landscape	2 lanes	Landscape/turning lane	2 lanes	Landscape/Parking	Footpath	
5.0						5.0	
Verge			Carriageway Varies			Verge	

**29.0m
Road Reserve**
(May vary along the length of the street)



Key Plan