

22 March 2007

The Chairperson
Darug Tribal Aboriginal Corporation
PO Box 441
BLACKTOWN NSW 2148

Our Ref: 07-0058dtac1

Re: Southpipe Lands Concept Plan—Site Visit

Dear Sir/Madam,

Godden Mackay Logan, with Mr Dominic Steele, has been engaged by Macquarie Goodman Management Limited to undertake an assessment of Aboriginal archaeological heritage resources in part of the 'Western Sydney Employment Hub'. The assessment will form part of a heritage impacts assessment for a 'Concept Plan' and other works currently being prepared.

We note the cultural importance of the area to the Darug people.

The Concept Plan and works would relate to an area of land some 405 hectares in size, and illustrated in the attached plans, ie the dark blue area labeled 'South Pipe Concept Plan' on attached 'Figure 2', which is the area marked 'Austral bricks' and bordered yellow in the attached aerial photo.

The land is an identified key centre of employment growth in Western Sydney over the next 25 years. It is largely cleared pastoral/grazing land that includes the Austral Quarry site. In general terms, it is proposed that the site will be developed for industrial/retail purposes, including warehousing and distribution facilities.

The proposed development constitutes a 'major project' under SEPP (Major Projects) 2005, and consequently the application would be determined by the Minister for Planning under Part 3A of the EP&A Act 1979.

In order to appropriately identify and address Aboriginal cultural heritage matters at an early stage, Godden Mackay Logan and Macquarie Goodman will be seeking your views in relation to documented and/or potentially sensitive Aboriginal archaeological or cultural heritage locations within the study area, and to develop appropriate strategies to ensure that any adverse impacts to sites or areas of potential Aboriginal cultural sensitivity are avoided/mitigated in the future.

To this end we would like to invite you to take part in a site inspection/project familiarisation meeting on Friday 30 March, probably from 9am (time to be confirmed).

GML

Sydney

78 George Street Redfern
NSW Australia 2016
T +61 2 9319 4811
F +61 2 9319 4383

Canberra

PO Box 374
Hall ACT 2618
T +61 2 6283 8105
F +61 2 6283 8164

Melbourne

22 Merri Street Brunswick
VIC Australia 3056
T +61 3 9380 1933
F +61 3 9380 4066

Hobart

GPO Box 554
Hobart TAS 7001
T +61 3 6223 2810
F +61 3 6223 2820

Godden Mackay Logan Pty Ltd
ABN 60 001 179 362
www.gml.com.au
heritage@gml.com.au

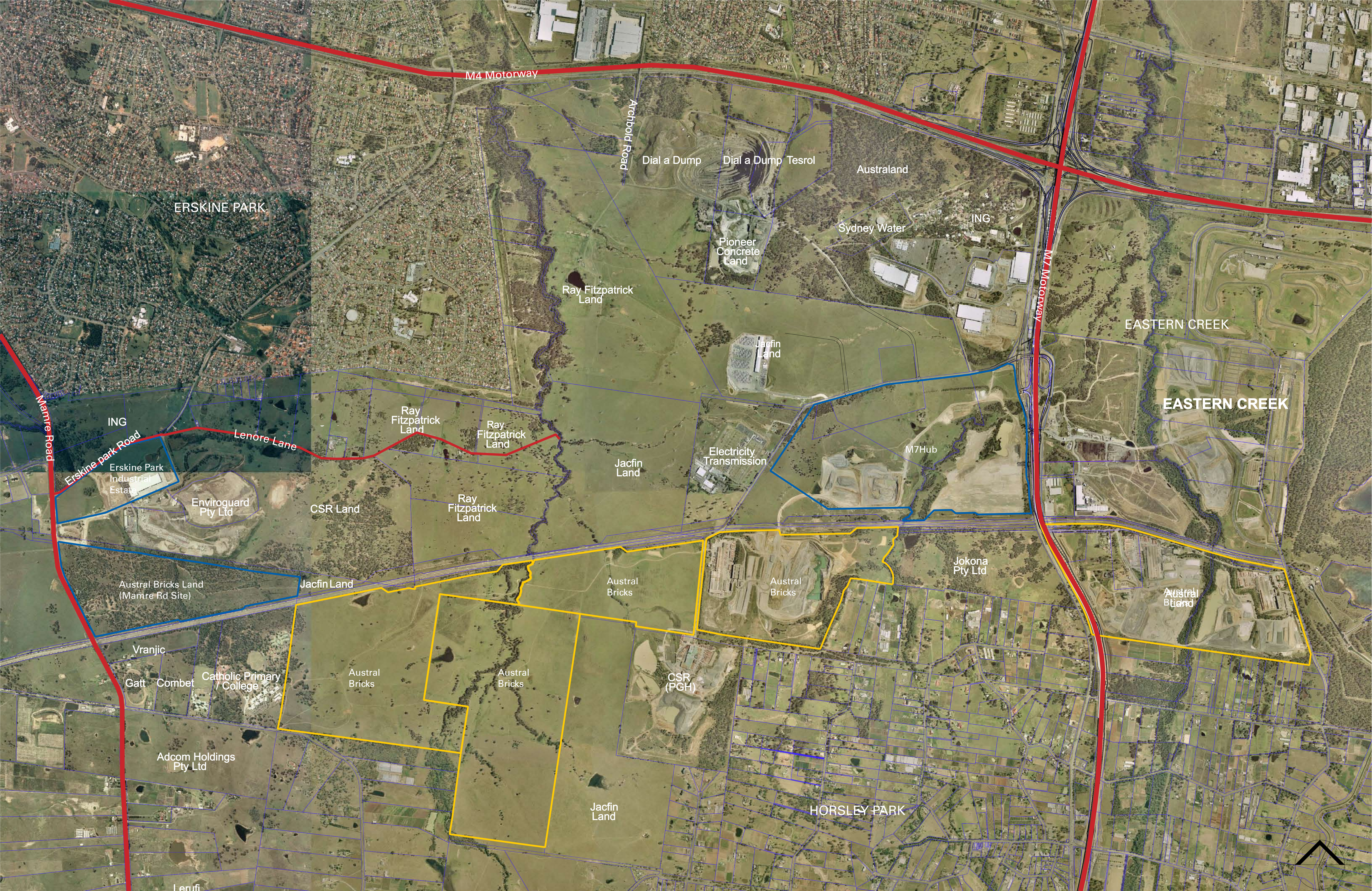
If you have any queries in relation to the above matters please do not hesitate to contact Dominic Steele (9569 5801) or Andrew Sneddon (Tel. 9319 4811).

Yours sincerely

Godden Mackay Logan Pty Ltd

A handwritten signature in black ink, appearing to read 'Sneddon', with a large, stylized initial 'S'.

Andrew Sneddon
Senior Consultant



M4 Motorway

Archbold Road

Dial a Dump

Dial a Dump Tesrol

Australand

Sydney Water

ING

Pioneer Concrete Land

Ray Fitzpatrick Land

Jacfin Land

EASTERN CREEK

EASTERN CREEK

ING

Erskine Park Road

Lenore Lane

Ray Fitzpatrick Land

Ray Fitzpatrick Land

Electricity Transmission

M7Hub

Jacfin Land

Ray Fitzpatrick Land

CSR Land

Enviroguard Pty Ltd

Erskine Park Industrial Estate

Jacfin Land

Austral Bricks Land (Mamre Rd Site)

Austral Bricks

Austral Bricks

Jokona Pty Ltd

Austral Bricks

Vranjic

Gatt

Combet

Catholic Primary / College

Austral Bricks

Austral Bricks

CSR (PGH)

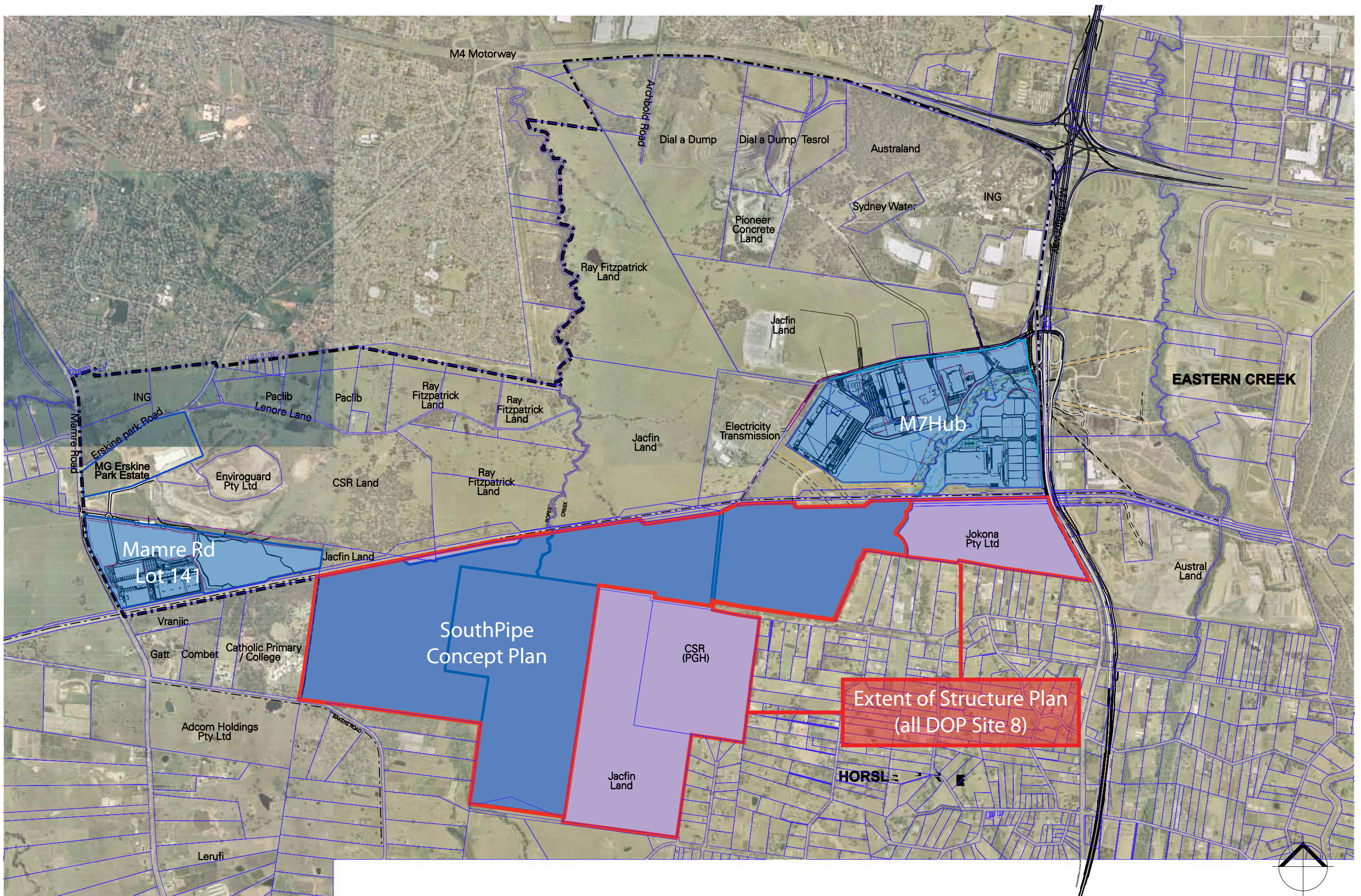
Adcom Holdings Pty Ltd

Jacfin Land

HORSLEY PARK

Leruffi





Scope of Concept Plan + Structure Plan

Figure 2