

Woollooware Bay Town Centre

Foreshore Park - Section 75W

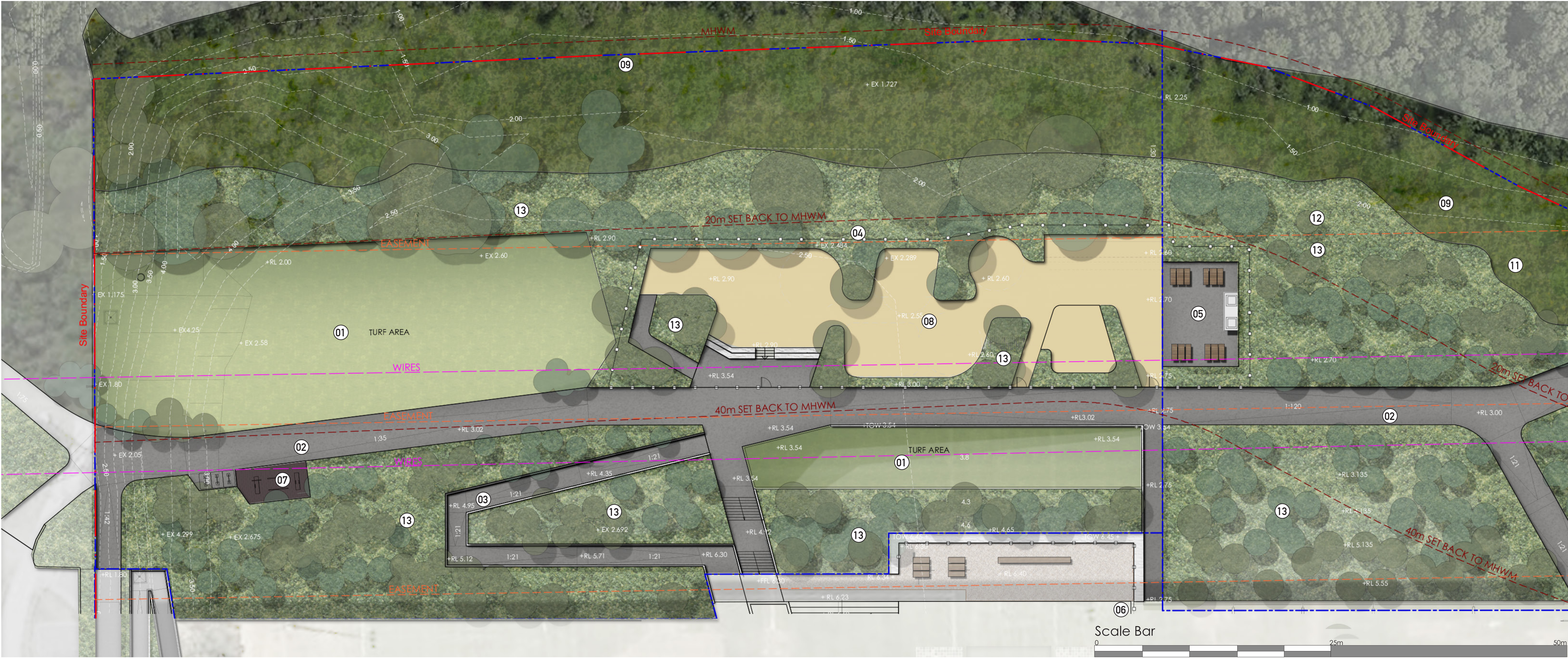
Indicative Drawings For Information Only

Project H8-16033

Rev. K

Date December 2016

ISSUE S75W Application



Foreshore Park Illustrative Plan



Key Plan

KEY

- 01 Open turf area
- 02 Foreshore shared pathway (Width 4.0m)
- 03 1:21 Ramp to residential building
- 04 Fence along playground perimeter
- 05 BBQ and seating

KEY

- SITE BOUNDARY
- STAGE BOUNDARY
- HV CABLES
- HV CABLES EASEMENT
- MHWM

- 06 Public Toilet
- 07 Fitness station
- 08 Touched By Olivia playground with range of accessible play equipment
- 09 Salt Marsh Planting Refer to planting schedule
- 10 Swale Planting(Not on this plan) Refer to planting schedule
- 11 Lower Riparian Planting Refer to planting schedule
- 12 Upper Riparian Planting Outside Easement Refer to planting schedule
- 13 Upper Riparian Planting Inside Easement Refer to planting schedule



PLAYGROUND IMAGES

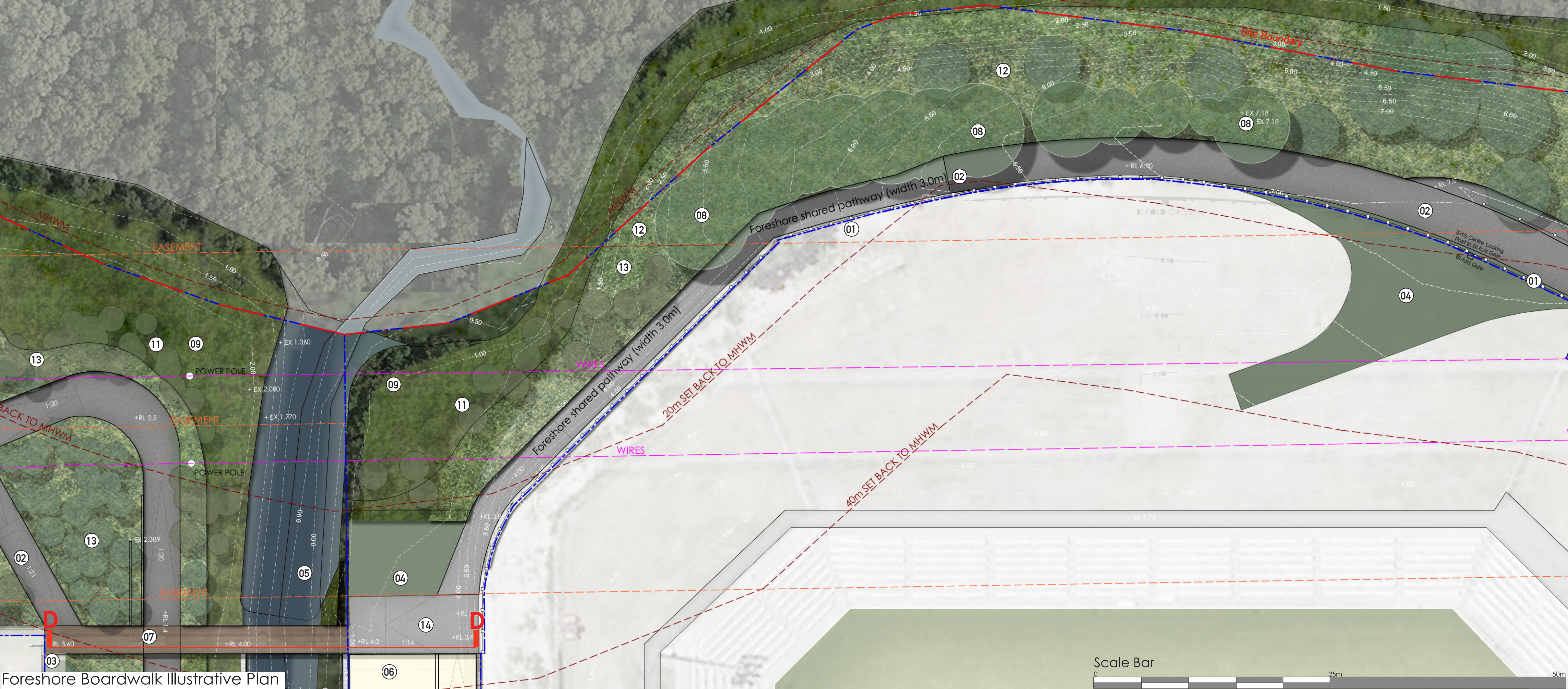


LAWN IMAGES

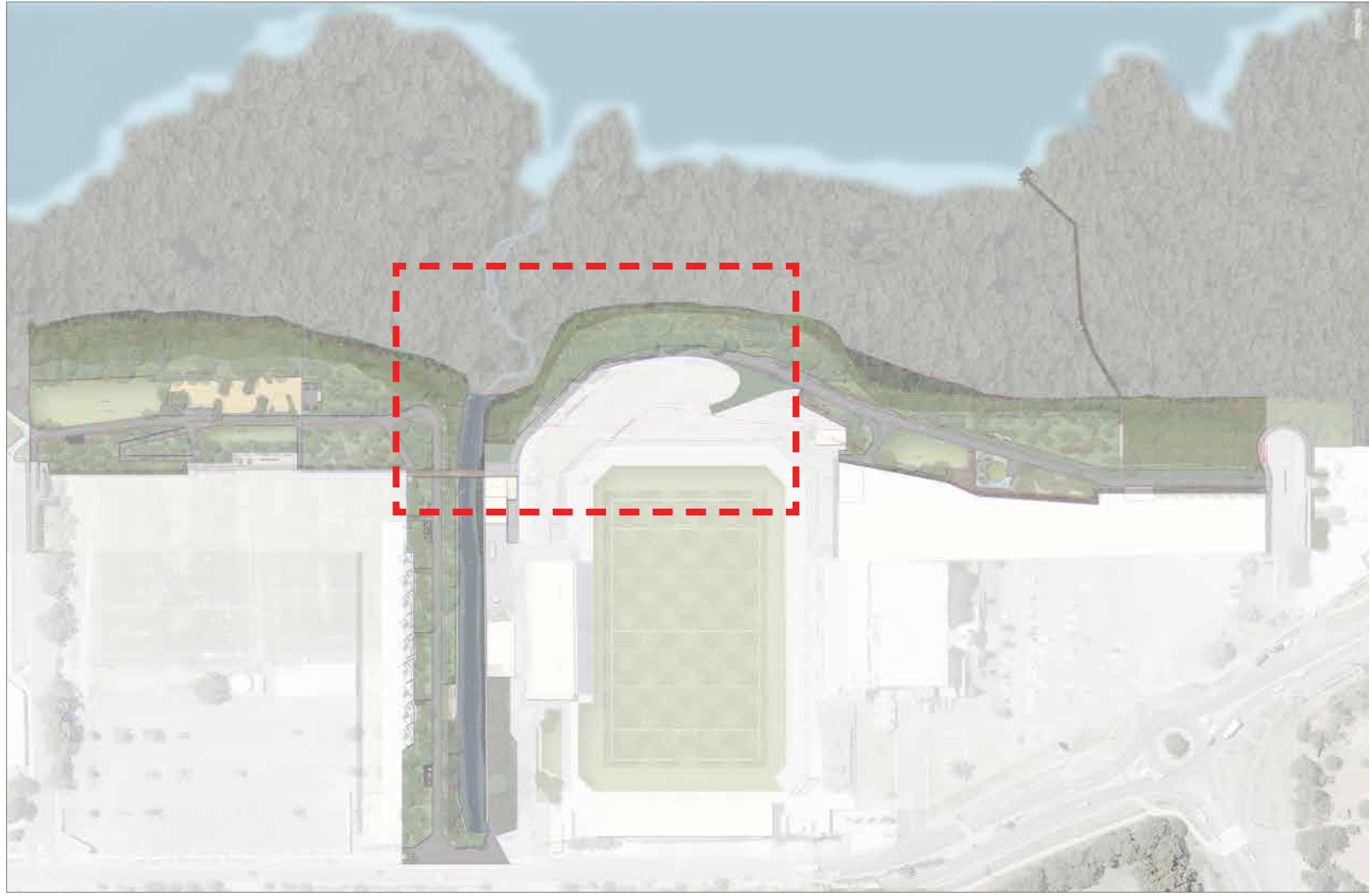


SHARED PATHWAY IMAGES

Client	Project	Project No.	Rev.	Drawn	Revision	Date	Purpose
CAPITAL BLUESTONE	Woollooware Bay Town Centre	H8-16033	K	JZ	K	02.12.16	S75W Application
	Title	Drawing No.	Scale	Checked	Indicative Drawings For Information Only		
	Foreshore Park Illustrative Plan	L002	1:200@A1	DV			



Foreshore Boardwalk Illustrative Plan



Key Plan

Key

- 01 1.8m Palisade fence
- 02 Foreshore shared pathway (Width 4.0m)
- 03 Access to building
- 04 Permeable paving below
- 05 Drainage channel
- 06 Proposed Club Compound
- 07 Bridge across drainage channel
- 08 Existing trees to be retained
- 09 Salt Marsh Planting Refer to planting schedule
- 10 Swale Planting (Not on this plan) Refer to planting schedule
- 11 Lower Riparian Planting Refer to planting schedule
- 12 Upper Riparian Planting Outside Easement Refer to planting schedule
- 13 Upper Riparian Planting Inside Easement Refer to planting schedule
- 14 Emergency vehicle turning area

KEY

- SITE BOUNDARY
- STAGE BOUNDARY
- HV CABLES
- HV CABLES EASEMENT
- MHW

Client



Project

Woollooware Bay Town Centre

Project No.

H8-16033

Rev.

K

Drawn

JZ

Revision

K

Date

02.12.16

Purpose

S75W Application

Title

Foreshore Boardwalk Illustrative Plan

Drawing No.

L003

Scale

1:200@A1

Checked

DV



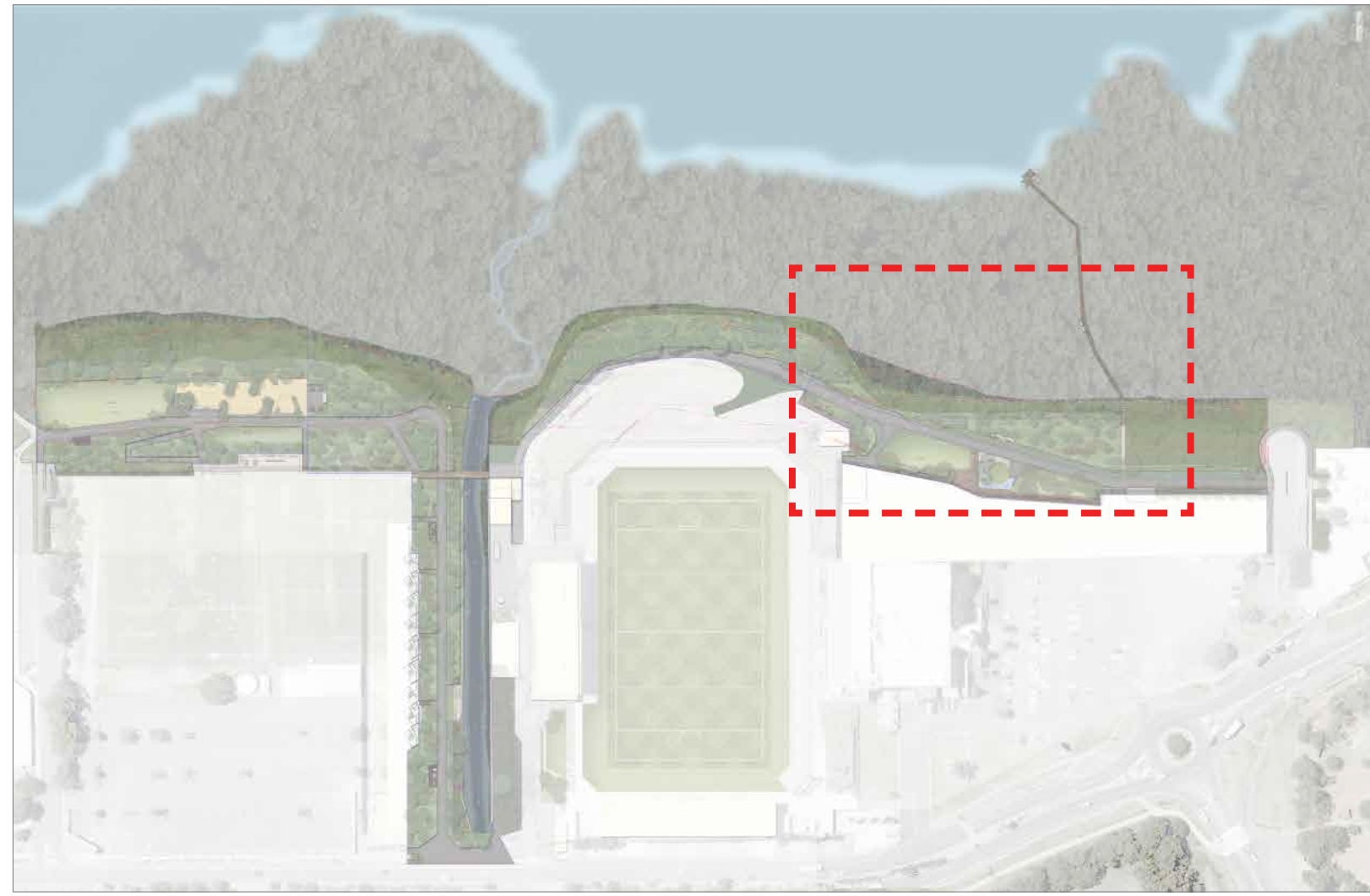
Indicative Drawings For Information Only

+61 (0)2 9360 7771
habit8.com.au
Studio 25 13-29 Nichols St
Surry Hills, NSW 2010
ABN: 19 164 285 250





Retail Foreshore Park Illustrative Plan



Key Plan

KEY

- ① Substation
- ② Foreshore shared pathway (Width 4.0m)
- ③ New mangrove timber boardwalk
- ④ Water play
- ⑤ Extended access road(Permeable paving for grass)

KEY

- SITE BOUNDARY
- STAGE BOUNDARY
- HV CABLES
- HV CABLES EASEMENT
- MHHM

- ⑥ Gravel paving around Substation
- ⑦ Gravel footpath
- ⑧ Boardwalk/platform to building facade and through site link
- ⑨ Salt Marsh Planting Refer to planting schedule
- ⑩ Swale Planting Refer to planting schedule

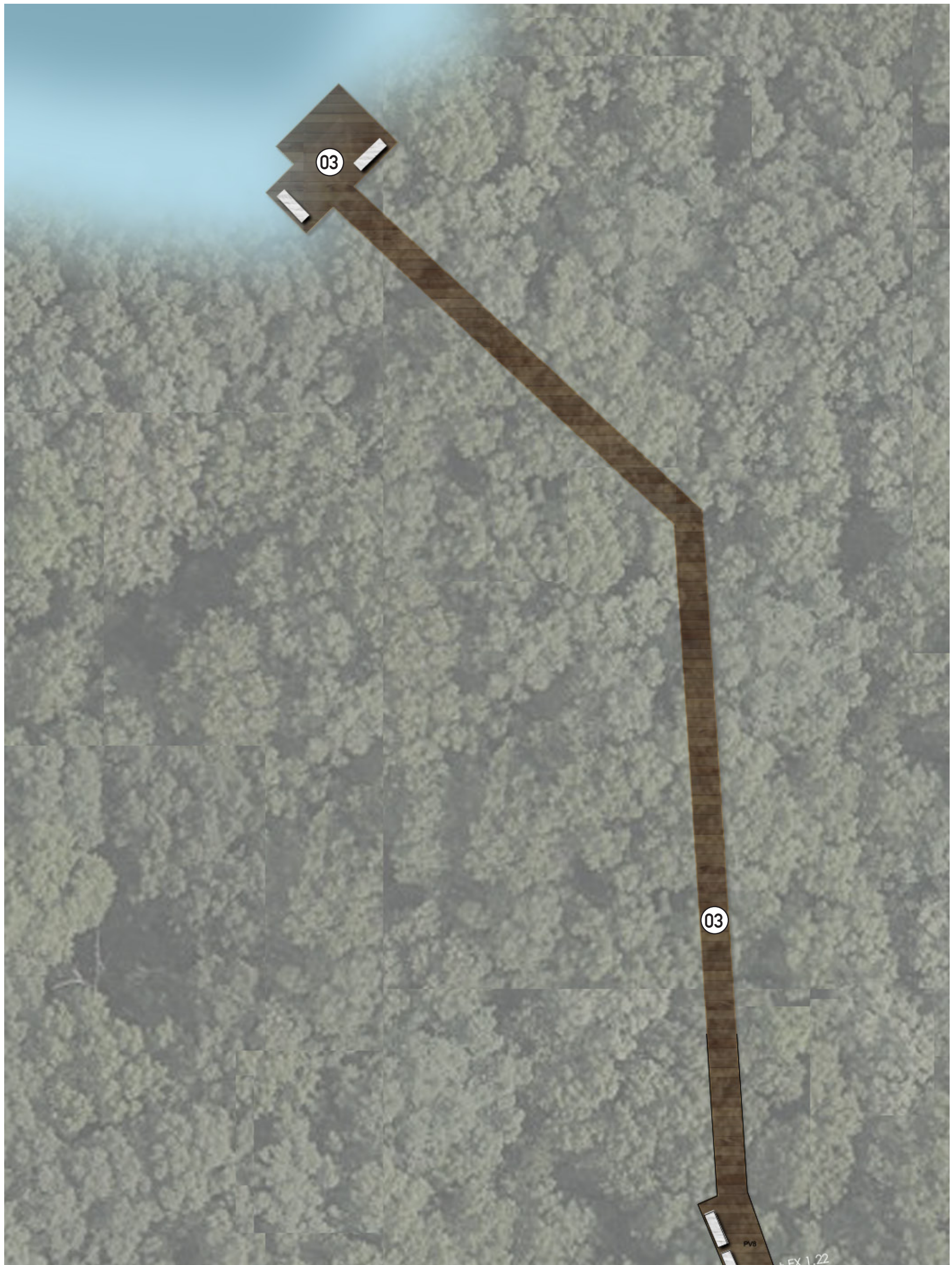
- ⑪ Lower Riparian Planting Refer to planting schedule
- ⑫ Upper Riparian Planting Outside Easement Refer to planting schedule
- ⑬ Upper Riparian Planting Inside Easement Refer to planting schedule
- ⑭ Seats

- ⑮ Steel mesh panels to base of bridge structure with planting
- ⑯ Open turf area
- ⑰ Grass in embankment

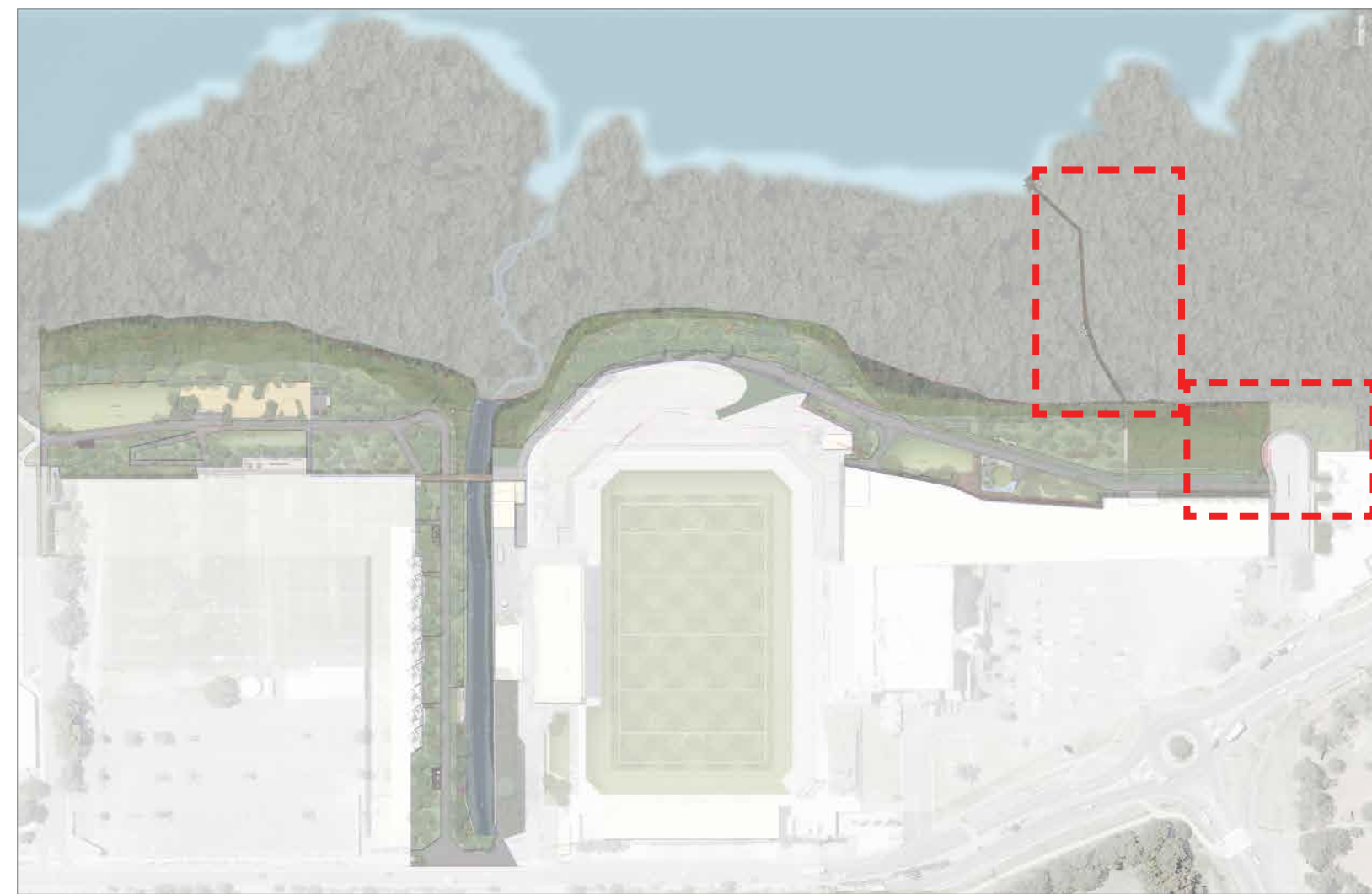




Retail Foreshore Park Illustrative Plan



Mangrove Timber Board Walk



Key Plan

KEY

- ① Substation
- ② Foreshore shared pathway (Width 4.0m)
- ③ New mangrove timber boardwalk
- ④ Existing mangroves
- ⑤ Extended access road(Permeable paving for grass)

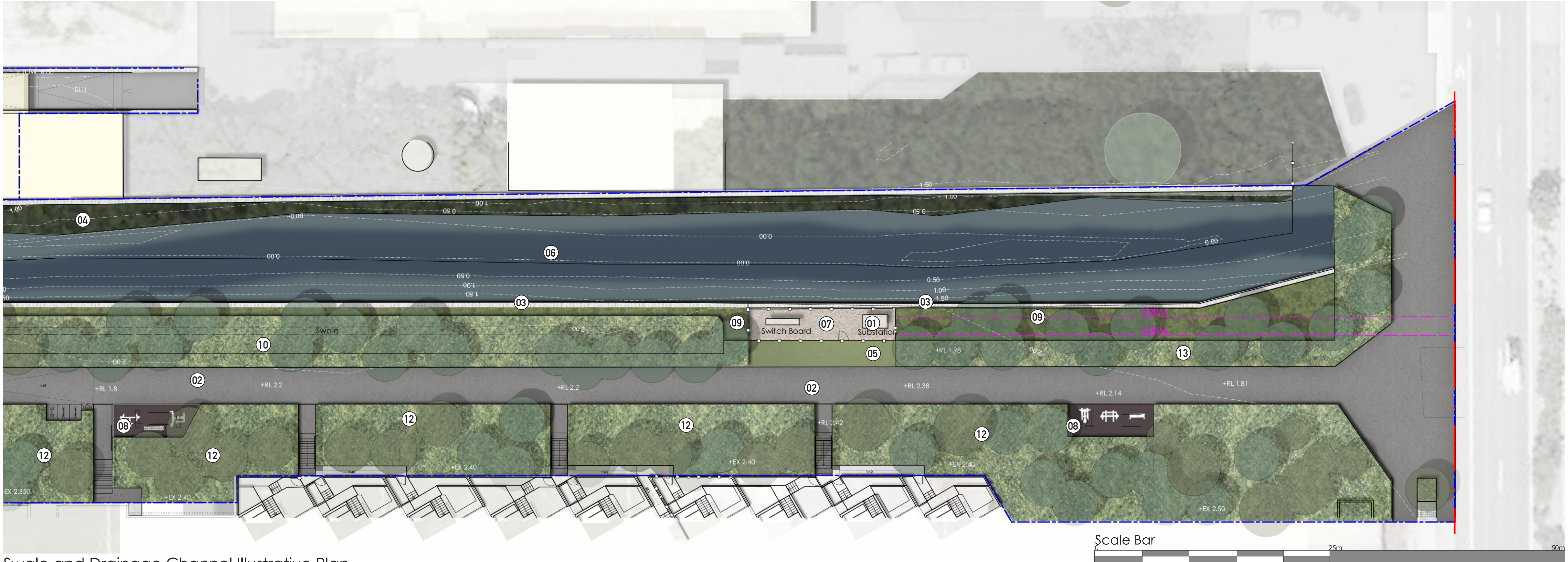
KEY

- SITE BOUNDARY
- STAGE BOUNDARY
- HV CABLES
- HV CABLES EASEMENT
- MHWM

- ⑥ Gravel paving around Substation
- ⑦ Gravel footpath
- ⑧ Boardwalk/platform to building facade and through site link
- ⑨ Salt Marsh Planting
Refer to planting schedule
- ⑩ Swale Planting
Refer to planting schedule

- ⑪ Lower Riparian Planting (Not on this plan)
Refer to planting schedule
- ⑫ Upper Riparian Planting Outside Easement
Refer to planting schedule
- ⑬ Upper Riparian Planting Inside Easement (Not on this plan)
Refer to planting schedule



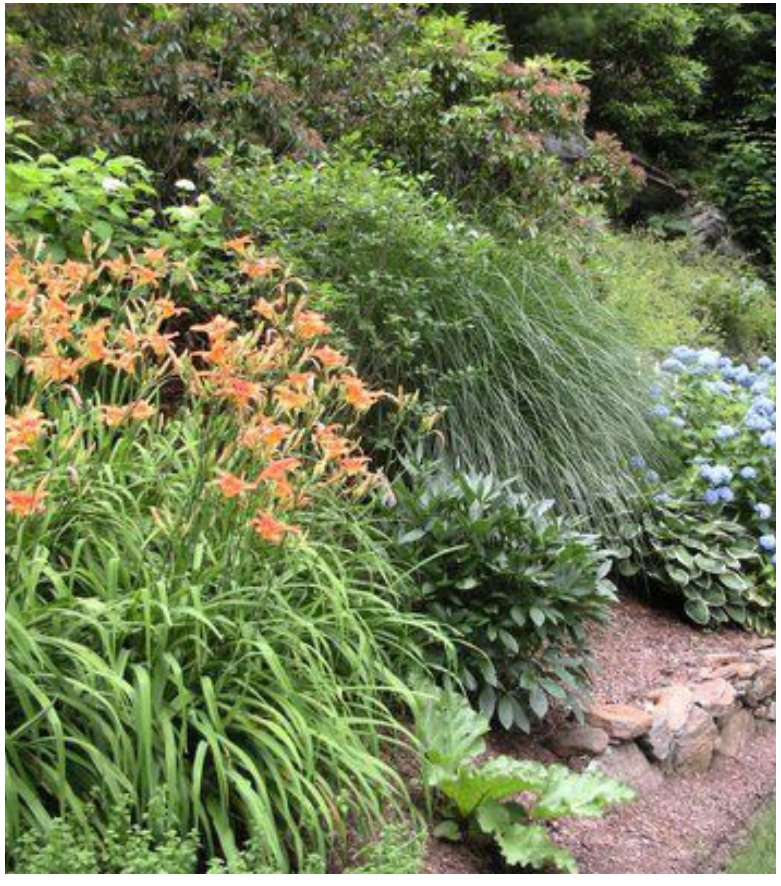


Swale and Drainage Channel Illustrative Plan



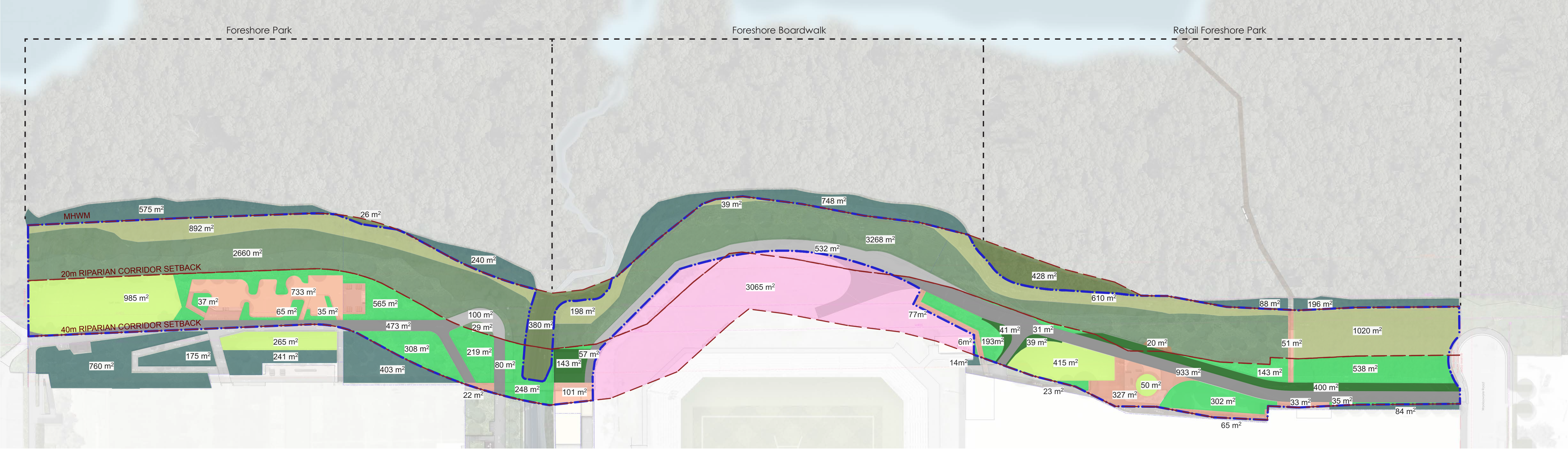
Key Plan

- KEY
- ① Substation
 - ② Foreshore shared pathway (Width 4.0m)
 - ③ New sheet pile wall
 - ④ Existing Mangroves
 - ⑤ Extended access road(Permeable paving for grass)
 - ⑥ Drainage channel
 - ⑦ Gravel paving around Substation/Switch board
 - ⑧ Fitness Station
 - ⑨ Salt Marsh Planting
Refer to planting schedule
 - ⑩ Swale Planting
Refer to planting schedule
 - ⑪ Lower Riparian Planting (Not on this plan)
Refer to planting schedule
 - ⑫ Upper Riparian Planting Outside Easement
Refer to planting schedule
 - ⑬ Upper Riparian Planting Inside Easement
Refer to planting schedule



DESIGN IMAGES





KEY

- SITE BOUNDARY
- STAGE BOUNDARY
- HV CABLES
- HV CABLES EASEMENT
- MHWM

KEY

	RIPARIAN CORRIDOR	
	TOTAL RIPARIAN CORRIDOR AREA WITHIN SCOPE:	17141 m2
	TOTAL RIPARIAN PLANTING AREA	11464 m2
	INNER ZONE SALT MARSH PLANTING	2759 m2
	INNER ZONE PLANTING	5957 m2
	OUTER ZONE PLANTING	2748 m2
	TOTAL NON-RIPARIAN AREA	4134 m2
	SOFTFALL,TIMBER DECK, GRAVEL	1429 m2
	FORESHORE SHARED PATHWAY (INNER ZONE)	632 m2
	PERMEABLE PAVING FOR TURF	623 m2
	TURF (within RC)	1450 m2
	FORESHORE SHARED PATHWAY(OUTER ZONE)	1543 m2
	SURROUNDING OFFSET PLANTING	3524 m2
	EXISTING VEGETATION AREA WITHIN RC	834 m2
	AREA OUTSIDE SCOPE	3065 m2
	TURF (Outside RC)	265 m2

Client



Project

Woollooware Bay Town Centre

Project No.

H8-16033

Rev.

K

Drawn

JZ

Revision

K

Date

02.12.16

Purpose

S75W Application

Title

Riparian Corridor Analysis

Drawing No.

L007

Scale

N/A

Checked

DV



Indicative Drawings For Information Only

+61 (0)2 9360 7771
habit8.com.au
Studio 25 13-29 Nichols St
Surry Hills, NSW 2010
ABN: 19 164 285 250

