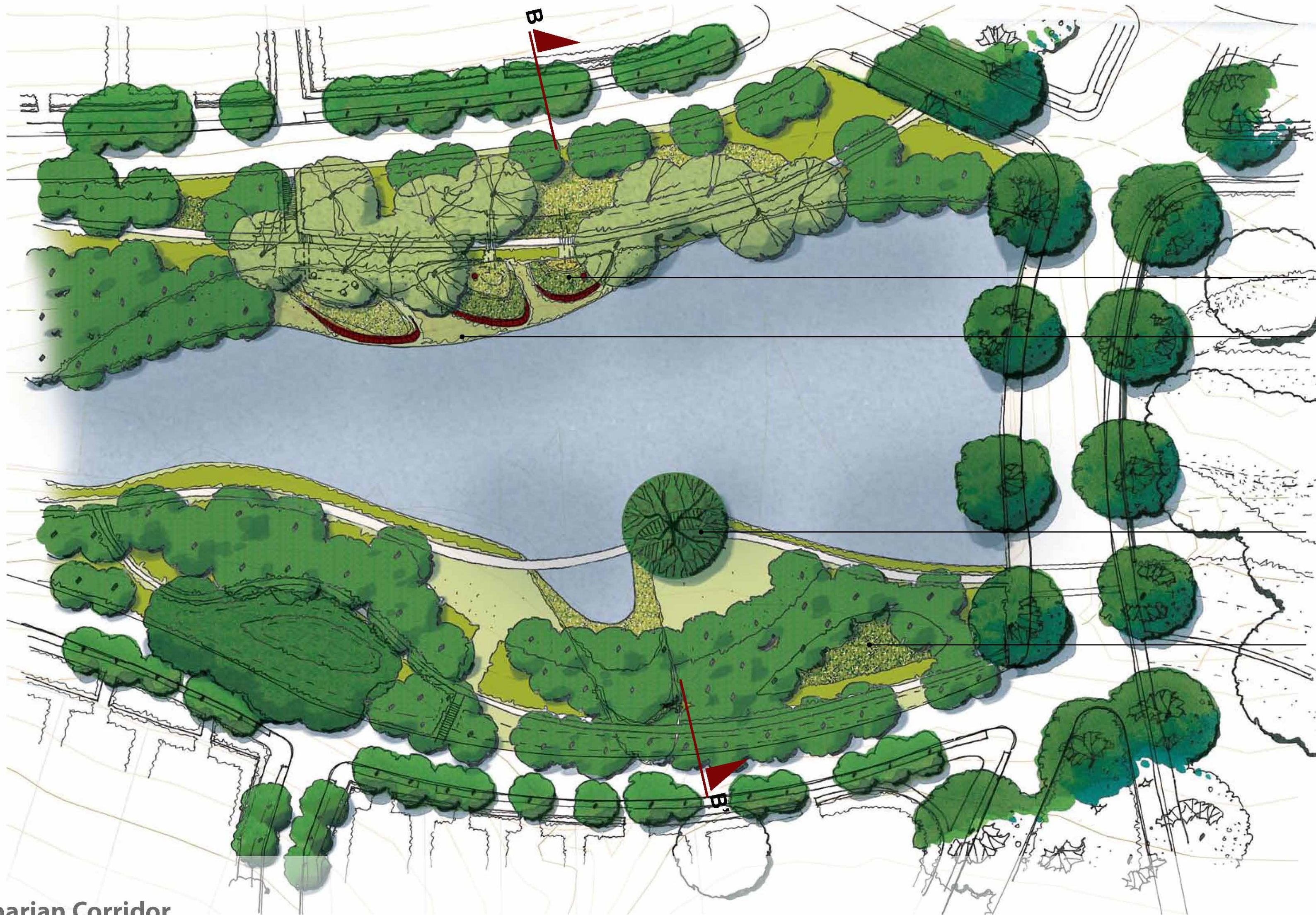


Village Centre Plaza

- In-situ concrete sculpture
- Village Centre Plaza with feature deciduous tree and stairs forming an outdoor arena and seating area
- Water feature that aerates collected rain water in storage tanks. The water is then piped through detention pond with aquatic planting to remove nutrition and recycled for toilet flushing and other uses
- Rain Garden to filter run-off from Village Center
- Use of stairs and retaining walls reinforces the urban character of Village Centre
- Feature Main Street Planting *Eucalyptus ficifolia*

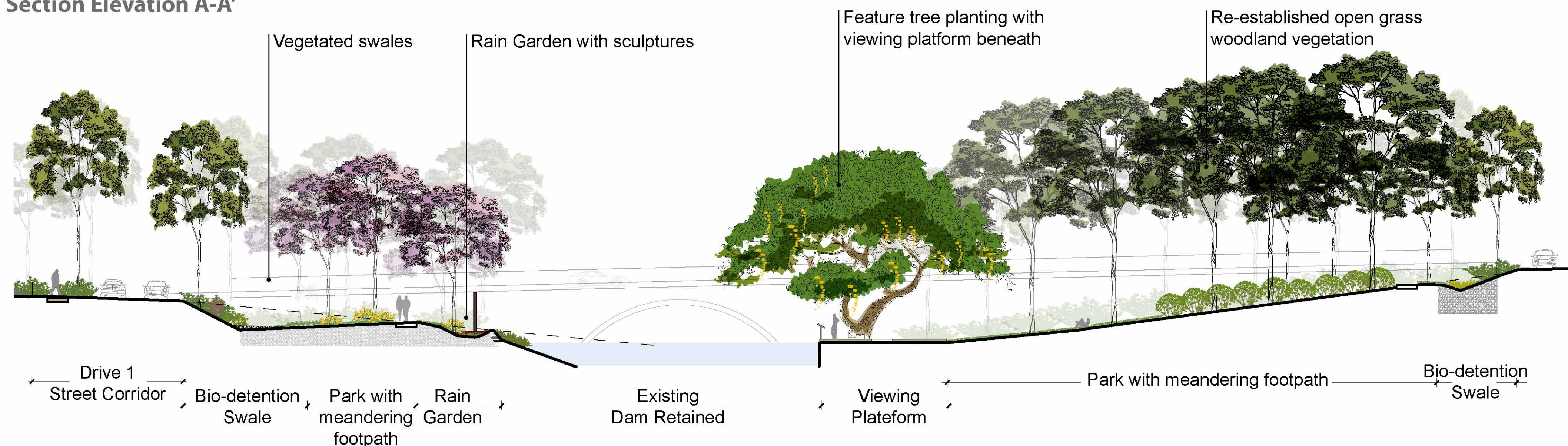


Riparian Corridor

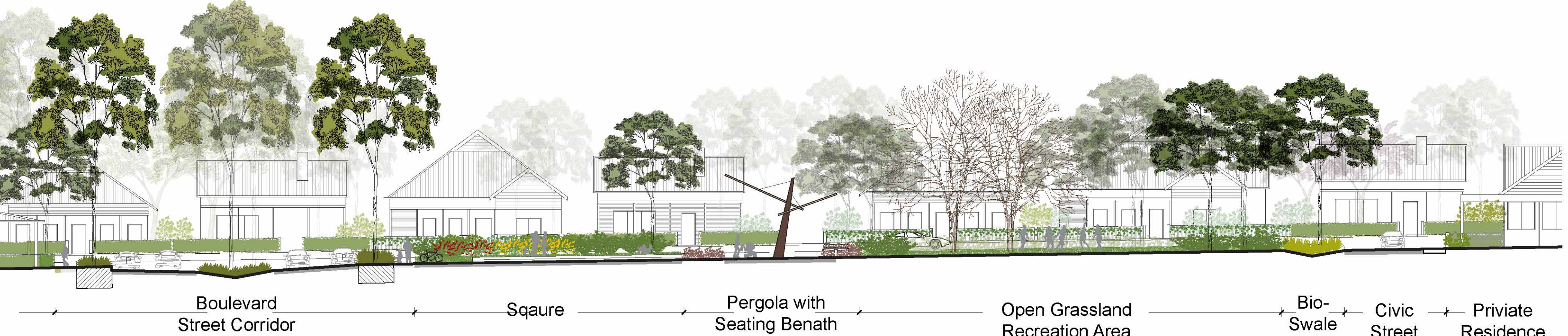
- Rain garden with sculptures for storm water mitigation and amenity
- Layers of shrubs, aquatic herbs, rushes and sedges planting along the water edge consolidate the embankment, create sheltered fauna passages and form a colorful display of vegetation
- Timber platform with interpretive sign
- Bio-swales and rain gardens to mitigate storm water run-off and increase rain water percolation into soil



Section Elevation A-A'



Section Elevation B-B'



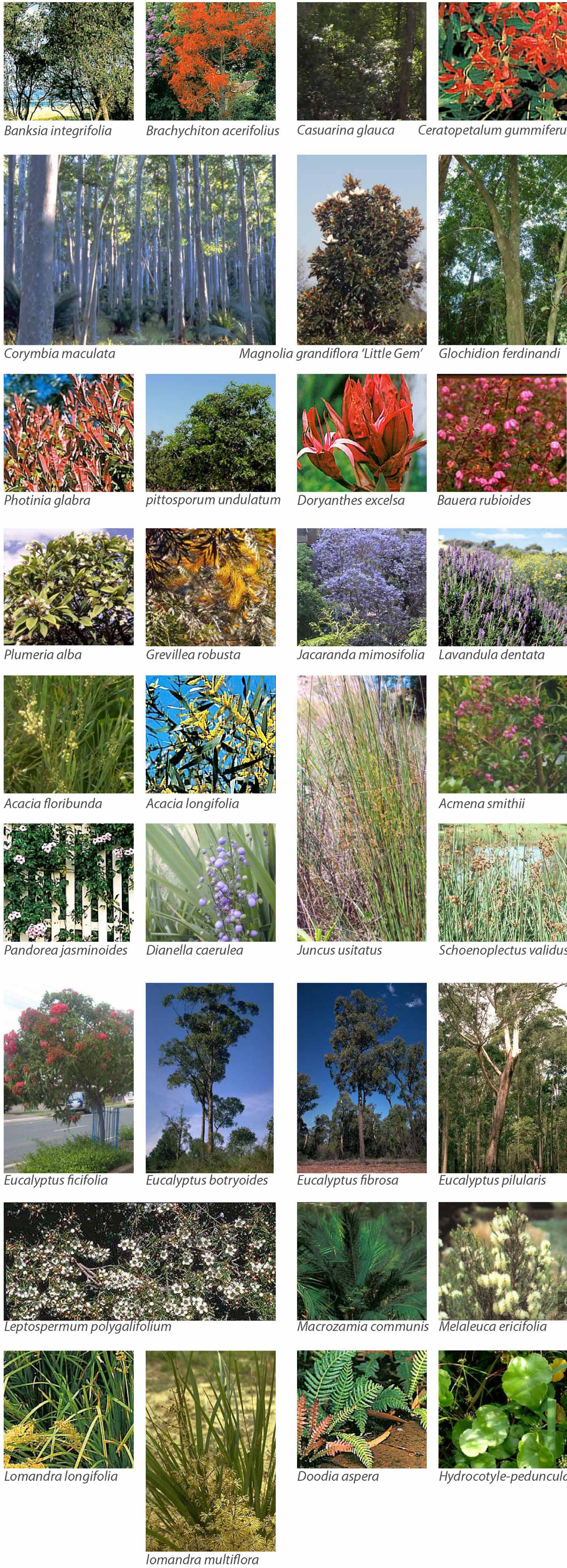
Section Elevation C-C'

SUGGESTED PLANTING SCHEDULE

Bevian Road Development Suggested Planting Schedule

Trees				
Botanical Name	Common Name	Height	Spread	Origin
<i>Acmena smithii</i>	Lilly Pilly	15m	6m	Endemic
<i>Allocasuarina littoralis</i>	Black She Oak	10m	5m	Endemic
<i>Alphitonia excelsa</i>	Red Ash	18m	5m	Endemic
<i>Banksia integrifolia</i>	Coastal Banksia	12m	8m	Endemic
<i>Brachychiton acerifolius</i>	Illawarra Flame Tree	20m	10m	Native
<i>Casuarina glauca</i>	Swamp Oak	15m	5m	Endemic
<i>Ceratopetalum gummiferum</i>	New South Wales Christmas bush	4m	3m	Native
<i>Corymbia maculata</i>	Spotted Gum	45m	12m	Endemic
<i>Eucalyptus botryoides</i>	Bangalay	12m	8m	Endemic
<i>Eucalyptus fibrosa</i>	Broad Leaved Ironbark	30m	10m	Endemic
<i>Eucalyptus ficifolia</i>	Red-flowering gum	15m	10m	Endemic
<i>Eucalyptus paniculata</i>	Grey Ironbark	30m	15m	Endemic
<i>Eucalyptus pilularis</i>	Blackbutt	30m	10m	Endemic
<i>Ficus coronata</i>	Sandpaper Fig	12m	8m	Endemic
<i>Glochidion ferdinand</i>	Cheese Tree	15m	8m	Endemic
<i>Grevillea robusta</i>	Silly Oak	30m	15m	Native
<i>Jacaranda mimosifolia</i>	Blue Haze Tree	12m	10m	Exotic
<i>Magnolia grandiflora 'Little Gem'</i>	Little Gem Magnolia	18m	8m	Exotic
<i>Melaleuca ericifolia</i>	Swamp paperbark	3m	3m	Endemic
<i>Plumeria alba</i>	Frangipani	5m	4m	Exotic
Hedges and Screens				
Botanical Name	Common Name	Height	Spread	Origin
<i>Acacia floribunda</i>	Sally Wattle	4-8m	6m	Endemic
<i>Acacia longifolia</i>	Sydney Golden Wattle	4-6m	6m	Endemic
<i>Acacia terminalis</i>	Sunshine Wattle	4-6m	6m	Endemic
<i>Exocarpus cupressiformis</i>	Native Cherry	8m	6m	Endemic
<i>Grevillea 'Robyn Gordon'</i>	Grevillea	1.5m	1.5m	Native
<i>Leptospermum polygalifolium</i>	Yellow Tea Tree	2m	1.5m	Endemic
<i>Photinia glabra 'Rubens'</i>	Red-leaf Photinia	5m	5m	Native
<i>Pittosporum undulatum</i>	Sweet Pittosporum	12m	7m	Endemic
Shrubs				
Botanical Name	Common Name	Height	Spread	Origin
<i>Goodenia ovata</i>	Hop Goodenia	1-2.5m	2m	Endemic
<i>Lavandula dentata</i>	French Lavender	450mm	1m	Exotic
Accent Plants				
Botanical Name	Common Name	Height	Spread	Origin
<i>Macrozamia communis</i>	Burrawang	1.5m	1.5m	Endemic
<i>Doryanthes excelsa</i>	Gymea Lily	2m	2m	Native
Grasses				
Botanical Name	Common Name	Height	Spread	Origin
<i>Dianella caerulea</i>	Flax Lily	450mm	400mm	Endemic
<i>Joycea pallida</i>	Silvertop Wallaby Grass	400mm	400mm	Endemic
<i>Juncus usitatus</i>	Common Rush	600mm	400mm	Endemic
<i>Lomandra longifolia</i>	Spiky-Headed Mat-rush	450mm	450mm	Endemic
<i>Lomandra multiflora</i>	Many-flowered Mat-rush	300mm	300mm	Endemic
<i>Schoenoplectus validus</i>	River club rush	200mm	150mm	Endemic
<i>Themedia australis</i>	Kangaroo Grass	1200mm	1000mm	Endemic
Groundcovers				
Botanical Name	Common Name	Height	Spread	Origin
<i>Adiantum aesthiopicum</i>	Common Maiden Hair	400mm	400mm	Endemic
<i>Centella asiatica</i>	Swamp Pennywort	100mm	na	Endemic
<i>Clethrum cartilagineum</i>	Gristle Fern	400mm	400mm	Endemic
<i>Dianella caerulea</i>	Flax Lily	450mm	400mm	Endemic
<i>Dichondra repens</i>	Kidney Weed	150mm	150mm	Endemic
<i>Doodia aspera</i>	Rasp Fern	400mm	400mm	Endemic
<i>Goodenia hederacea</i>	Violet leaved Goodenia	200mm	500mm	Endemic
<i>Grevillea 'Poinda Royal Mantle'</i>	Royal Mantle Grevillea	300mm	8m	Native
<i>Hydrocotyle peduncularis</i>	Pennywort	100mm	na	Endemic
<i>Mycoporum parvifolium</i>	Creeping Boobialla	200mm	200mm	Native
<i>Viola hederacea</i>	Native Violet	150mm	na	Native
Turf				
Botanical Name	Common Name	Height	Spread	Origin
<i>Stenotaphrum secundatum</i>	Buffalo Palmetto Grass	150mm	150mm	Exotic

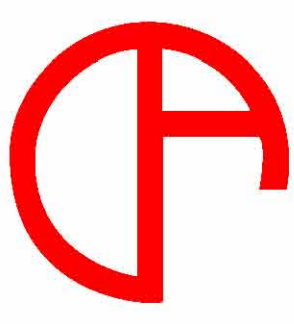
SUGGESTED PLANT PALETTE



RD drawing number : RDSK-CA-S05 revD | dated: 15/11/07 | issue: concept issue for part application

BEVIAN ROAD - CONCEPT APPLICATION  
LANDSCAPE CONCEPT DETAILS - PLANS, SECTIONS AND PLANT PALETTE

Drawing: CA-S05 | Issued for: Information | Dated: 15.11.2007 | Drawing Issued for Supplementary Information



From vision to venture >