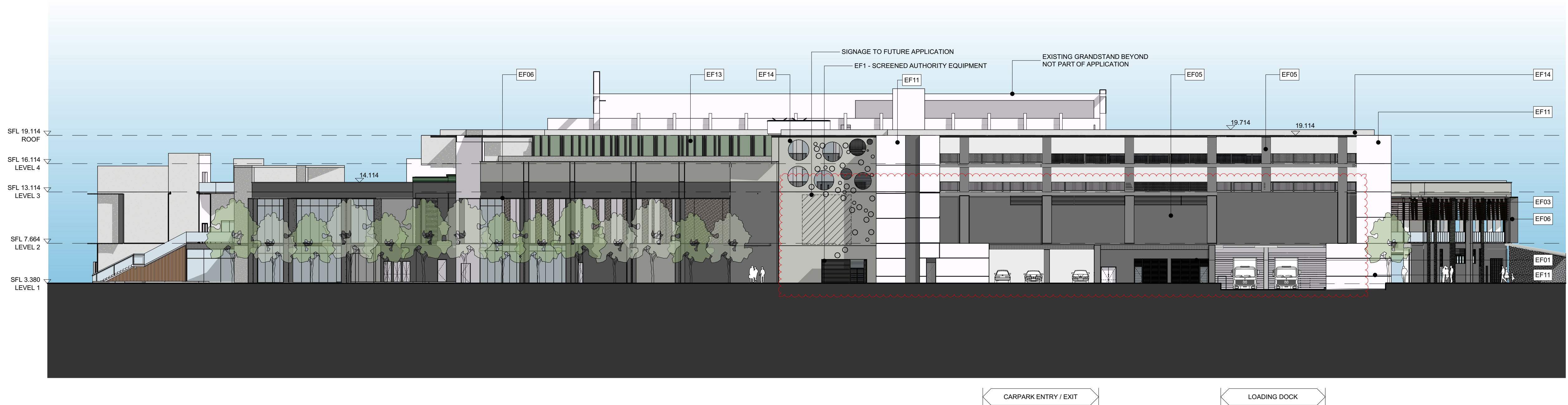


1 ELEVATION
CAPTAIN COOK DRIVE ELEVATION (SOUTH) 1:250



2 ELEVATION
WOOLLOOWARE ROAD NORTH ELEVATION (EAST) 1:250

NORTH POINT

THIS DOCUMENT IS THE COPYRIGHT OF THE RICE DAUBNEY GROUP (NSW) PTY. LTD.
ALL INFORMATION IS CONTAINED ON THIS DOCUMENT IS TO BE CHECKED AND APPROVED ON SITE.
IN THE EVENT OF DISCREPANCIES REFER TO ARCHITECT PRIOR TO COMMENCEMENT OF THE WORK.
DO NOT SCALE DRAWINGS MANUALLY OR ELECTRONICALLY.

KEY PLAN

REV	DESCRIPTION OF CHANGE	DRAWN	CHECK	DATE
A	RETAIL 75W	EC	KS	12.02.16
B	75W UPDATES	CR	SS	19.09.16
C	75W UPDATES - NOTES ADDED	CR	SS	5.12.16 7.03.17

HDRRD 7:3:17

CLIENT

ARCHITECTS
RICE DAUBNEY
Level 1, 110 Walker Street, North Sydney NSW 2060, Australia
+61 2 9956 2666 | info@ricedaubney.com | ricedaubney.com
The Rice Daubney Group (NSW) PTY LTD as trustee for The Rice Daubney Trading Trust
ABN 56 880 304 993

PROJECT:
**BAY CENTRAL
CAPTAIN COOK DRIVE,
WOOLLOOWARE, NSW, 2230.**

DRAWING TITLE:
**RETAIL 75W APPLICATION
SOUTH AND EAST ELEVATIONS**

SCALE:	CHECKED:
AS SHOWN	SS
PROJECT NUMBER:	DRAWING NUMBER:
15R Wool	DA17

ISSUE:
C