

PLANTING MASTER LIST - NATIVE PLANTS

- Trees 25 L [min.] 400L [max.]**
Acacia dealbata - Silver Wattle [8-12m]
Casuarina cunninghamiana - River She Oak [10-15m]
Eucalyptus melliodora - Yellow Box [10-20m]
Eucalyptus bridgesiana - Apple Box
Eucalyptus viminalis - Ribbon Gum
Melaleuca quinquenervia - Broadleaved Paperbark [12m]
Tristanopsis laurina - Water Gum [6m]
- Native Shrubs [min. 200mm containers]**
Acacia longifolia - Sydney Golden Wattle [2-4m]
Acacia mearnsii - Black Wattle [3-10m]
Banksia marginata - Silver Banksia [4-6m]
Banksia spinulosa - Hairpin Banksia [4-16m]
Callistemon citrinus - Crimson bottlebrush [2-3m]
Correa glabra - Winter Glow [2m]
Dillwynia retorta - Heath Parrot Pea [0.5-1m]
Grevillea baueri - Bauers Grevillea [80cm]
Grevillea longifolia - Long leaved Grevillea [3m]
Kunzea parviflora - Kunzea [1.5-2.5m]
Leptospermum liversidgei [E] - Lemon Tea Tree
Olearia phlogopappa - Daisy Bush [1.5m]
Syzgium paniculatum [E] - Magenta Cherry
Westringia fruticosa - Coastal Rosemary [2m]
- Native Ground Covers/Climbers [min. 150mm containers]**
Brachyscome "Break O' Day" - Break O' Day Daisy [50cm]
Brachyscome multifida - Daisy [30cm]
Cissus antarctica - Kangaroo Vine
Clematis aristata - Clematis
Clematis microphylla - Small Leaved Clematis
Geranium solanderi - Native Geranium
Hardenbergia violacea - False Sardapartilla [10cm]
Hibbertia obtusifolia - Hoary Guinea Flower [40cm]
Hibbertia riparia - Golden Guinea Flower [40cm]
Hibbertia scandens - Silky Guinea Flower [40cm]
Kennedia rubicunda - Dusky Coral Pea [10cm]
Mentha australis [E] - River Mint
Ocimum americanum [E] - Wild Basil
Pandorea pandorana - Wonga Wonga Vine
Passiflora subpeltata [E] - Passionfruit
Rubus parvifolius [E] - Native Raspberry
Scaevola ramosissima - Hairy fan flower [10cm]
Viola hederacea - Native Violet [10cm]
- Native Grasses [min. 150mm containers]**
Angiozanthus "Bush Gem" - Kangaroo Paw "Bush Gem" [1m]
Baumea rubiginosa [1m]
Dianella caerulea - Paroo Lily
Dianella longifolia - Blue Flax Lily [1m]
Dianella revoluta - "Little Rev" - Little Rev Flax Lily
Gymnoschoenus sphaerocephalus - Button Grass
Gahnia sieberiana - Saw Sedge [1.5m]
Lomandra longifolia - Spiny Mat Rush [1m]
Lomandra filiformis - Wattle Mat Rush [80cm]
Lomandra multiflora - Many Flowered Mat Rush [80cm]
Restio tetraphyllus [1.5m]
Themeda triandra - Kangaroo Grass [0.5m]
- Native Wetland Plants/Sedges [min. 150mm containers]**
Baumea juncea - Bare Twig Rush [1m]
Baumea articulata - [2.5m]
Baumea rubiginosa - [1.5m]
Carex apressa - Tall Sedge [0.8m]
Carex fascicularis - Tassel Sedge [1m]
Isoplexis inundata - Swamp Club rush
Juncus usitatus - Common rush [0.5m]
Juncus pallidus - [1.25m]
Juncus articulatus - Jointed Rush [0.6m]
Juncus pallidus - Pale Rush [1m]
Gahnia sieberiana - Sedge [1.5m]
- note:
[E] - edible plant

PLANTING MASTER LIST - EXOTIC PLANTS

- Street Trees 25L [min.] 400L [max.]**
Quercus palustris - Oak [8-12m]
Jacaranda mimosifolia - Jacaranda [10-15m]
- Fruit Trees 25 L [min.] 400L [max.]**
Citrus [E] - Lime
Malus domestica [E] - Apple Dwarf Pink Lady
Olea europaea [E] - Kalamata Fuit, Cucco Fruit
Pyrus communis [E] - Pear
Prunus [E] - Cherry
- Shrubs [min. 200mm containers]**
Camellia japonica
Magnolia lilliflora 'Nigra'
- Perennials/Ground Covers/Climbers [min. 150mm containers]**
Anemone x hybrida
Hemerocallis hybrids
Iris species
Lavendula stoechas
Rosmarinus 'Tuscan Blue' [E]
Tymus vulgaris [E]
- Grasses [min. 150mm containers]**
Carex apressa
Festuca glauca
Pennisetum alopecuroides
- Roses [min. 150mm containers]**
floribunda bush roses
Europaea - deep crimson
loeborg - pure white
McLeod's Daughters - creamy apricot
Queen Mother - pale pink
Sea Foam - pale pink to white
modern shrub roses
Kookaburra - light pink
Temptress - red
- note:
[E] - edible plant

- Site Boundary
--- Precinct 1 Boundary
--- Precinct 2 Boundary
--- Precinct 3 Boundary
--- Precinct 4 Boundary

PROGRAMME

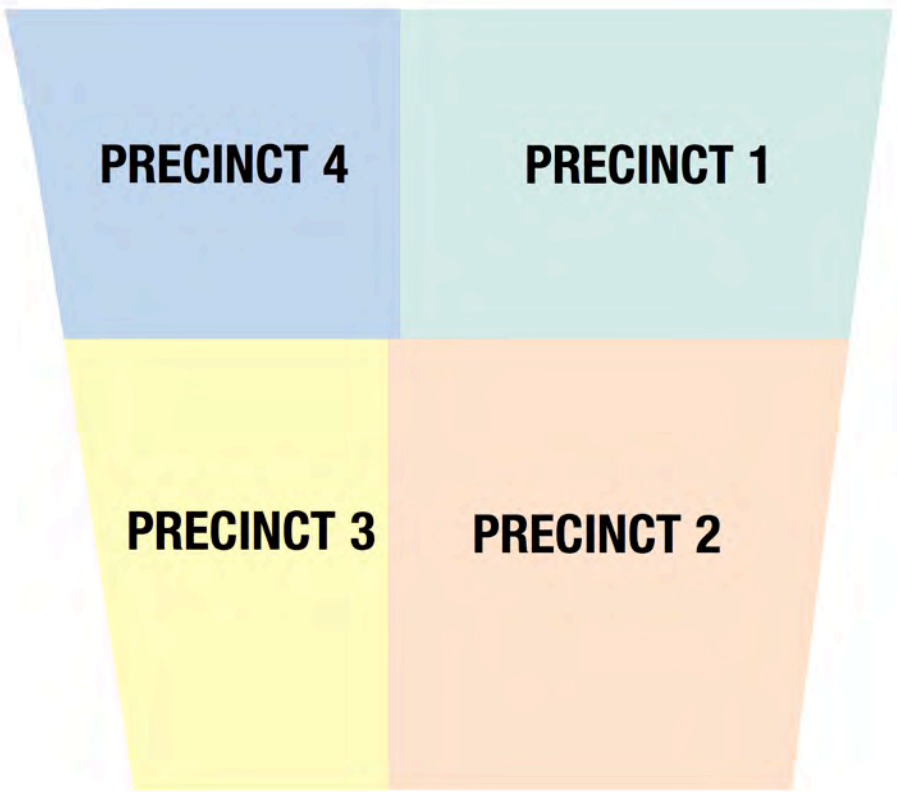
- 1 Main Vehicle Access
- 2 Square with Feature Tree
- 3 Shared Way
- 4 Pedestrian Plaza with cul de sac
- 5 Residential Courtyard
- 6 Decomposed Granite Recreation Space
- 7 Park / Open Green Space
- 8 External Seating and Dining Area
- 9 Timber Bridge across Bio-retention Area
- 10 Planted Arbour
- 11 Pleached Trees
- 12 Childcare Play Area
- 13 Communal Garden
- 14 Stormwater Filtration with Native Wetland Planting
- 15 Drop off zone
- 16 Car Parking Area / Semi Permeable
- 17 Overflow carpark

MATERIALS

- SEATING
- QUALITY PAVING
- CONCRETE PEDESTRIAN PAVING
- VEHICLE CARRIAGE WAY
- UNIT PAVERS
- DECOMPOSED GRANITE
- TIMBER
- WATER
- VEHICLE DIRECTIONAL MARKING
- SEATING BENCH
- OUTDOOR FURNITURE
- BOLLARD

PLANTING

- IRRIGATED LAWN IN 150MM GARDEN SOIL MIX AT GRADE
- PROPOSED NATIVE SHRUBS/GROUNDCOVERS PLANTING IN 300MM DEPTH GARDEN SOIL MIX AT GRADE
- PROPOSED NATIVE GRASSES IN 300MM DEPTH GARDEN SOIL MIX AT GRADE
- FILTRATION BIOTOPE/BIOSWALE WITH NATIVE GRASS/WETLAND PLANTING IN 300MM DEPTH GARDEN SOIL MIX AT GRADE
- PROPOSED NATIVE SHADE TOLERANT SHRUB/GROUNDCOVER PLANTING IN 300MM DEPTH GARDEN SOIL MIX AT GRADE
- PROPOSED NATIVE FLOWERING GRASS/SRUB/GROUNDCOVER PLANTING IN 300MM DEPTH GARDEN SOIL MIX AT GRADE
- HEDGE PLANTING IN 300MM DEPTH GARDEN SOIL MIX AT GRADE
- PROPOSED NATIVE TREE PLANTING
- PROPOSED NATIVE SMALL TREE PLANTING
- EXISTING TREES TO BE RETAINED. REFER TO ARBORIST REPORT
- EXISTING TREES TO BE REMOVED. REFER TO ARBORIST REPORT



BLOOMFIELD PRIVATE HOSPITAL SITE

Forest Road

Orange

LANDSCAPE GENERAL CONCEPT PLAN

REVISION E | SCALE 1:750 @ A1

0 5 10 15 20 25 M

01



TREE LINED PEDESTRIAN PROMENADE



CAR PARK PLANTING



WALKWAY IN CARPARK



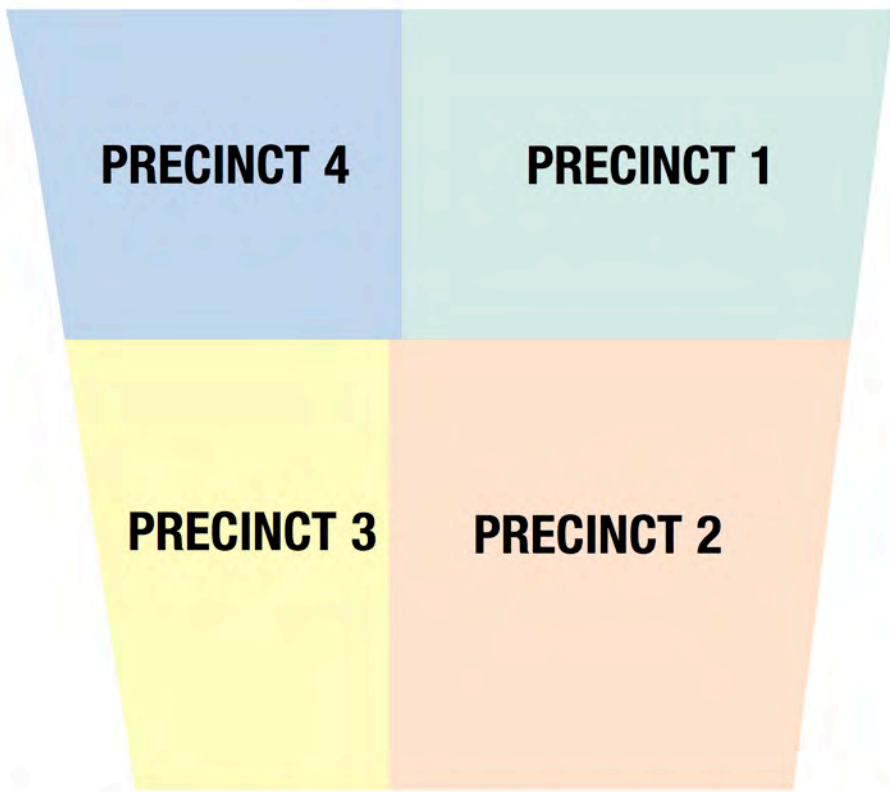
- Site Boundary

--- Precinct 1 Boundary

--- Precinct 2 Boundary

--- Precinct 3 Boundary

--- Precinct 4 Boundary
- PROGRAMME
- 1 Main Vehicle Access
 - 2 Square with Feature Tree
 - 3 Shared Way
 - 4 Pedestrian Plaza with cul de sac
 - 5 Residential Courtyard
 - 6 Decomposed Granite Recreation Space
 - 7 Park / Open Green Space
 - 8 External Seating and Dining Area
 - 9 Timber Bridge across Bio-retention Area
 - 10 Planted Arbour
 - 11 Pleached Trees
 - 12 Childcare Play Area
 - 13 Communal Garden
 - 14 Stormwater Filtration with Native Wetland Planting
 - 15 Drop off zone
 - 16 Car Parking Area / Semi Permeable
 - 17 Overflow carpark
- MATERIALS
- SEATING
 - QUALITY PAVING
 - CONCRETE PEDESTRIAN PAVING
 - VEHICLE CARRIAGE WAY
 - UNIT PAVERS
 - DECOMPOSED GRANITE
 - TIMBER
 - WATER
 - VEHICLE DIRECTIONAL MARKING
 - SEATING BENCH
 - OUTDOOR FURNITURE
 - BOLLARD
- PLANTING
- IRRIGATED LAWN IN 150MM GARDEN SOIL MIX AT GRADE
 - PROPOSED NATIVE SHRUBS/GROUNDCOVERS PLANTING IN 300MM DEPTH GARDEN SOIL MIX AT GRADE
 - PROPOSED NATIVE GRASSES IN 300MM DEPTH GARDEN SOIL MIX AT GRADE
 - FILTRATION BIOTOPE/BIOSWALE WITH NATIVE GRASS/WETLAND PLANTING IN 300MM DEPTH GARDEN SOIL MIX AT GRADE
 - PROPOSED NATIVE SHADE TOLERANT SHRUB/GROUNDCOVER PLANTING IN 300MM DEPTH GARDEN SOIL MIX AT GRADE
 - PROPOSED NATIVE FLOWERING GRASS/SHRUB/GROUNDCOVER PLANTING IN 300MM DEPTH GARDEN SOIL MIX AT GRADE
 - HEDGE PLANTING IN 300MM DEPTH GARDEN SOIL MIX AT GRADE
 - PROPOSED NATIVE TREE PLANTING
 - PROPOSED NATIVE SMALL TREE PLANTING
 - EXISTING TREES TO BE RETAINED. REFER TO ARBORIST REPORT
 - EXISTING TREES TO BE REMOVED. REFER TO ARBORIST REPORT



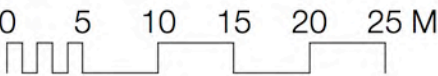
BLOOMFIELD PRIVATE HOSPITAL SITE

Forest Road

Orange

LANDSCAPE MASTERPLAN

REVISION F | SCALE 1:500 @ A1



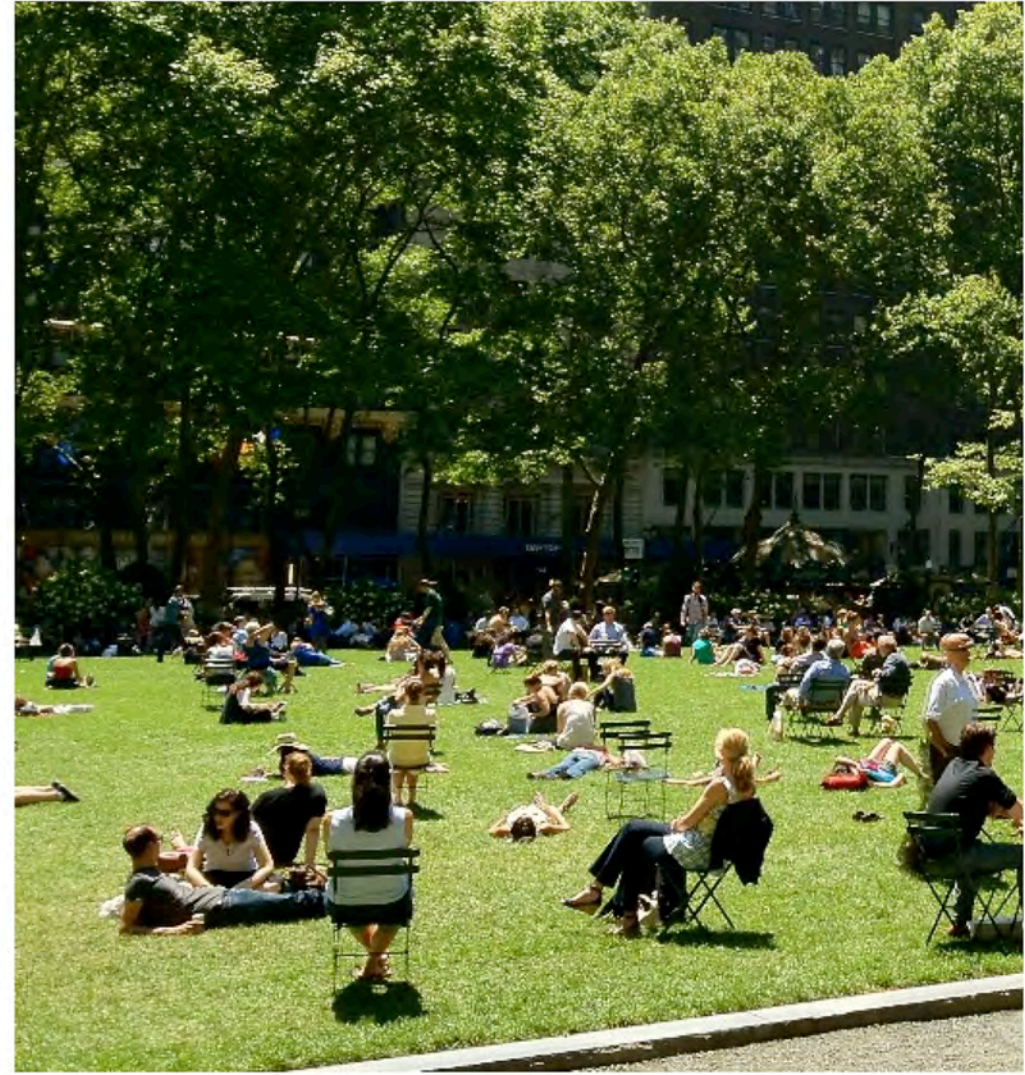
02



COMMUNITY GARDEN



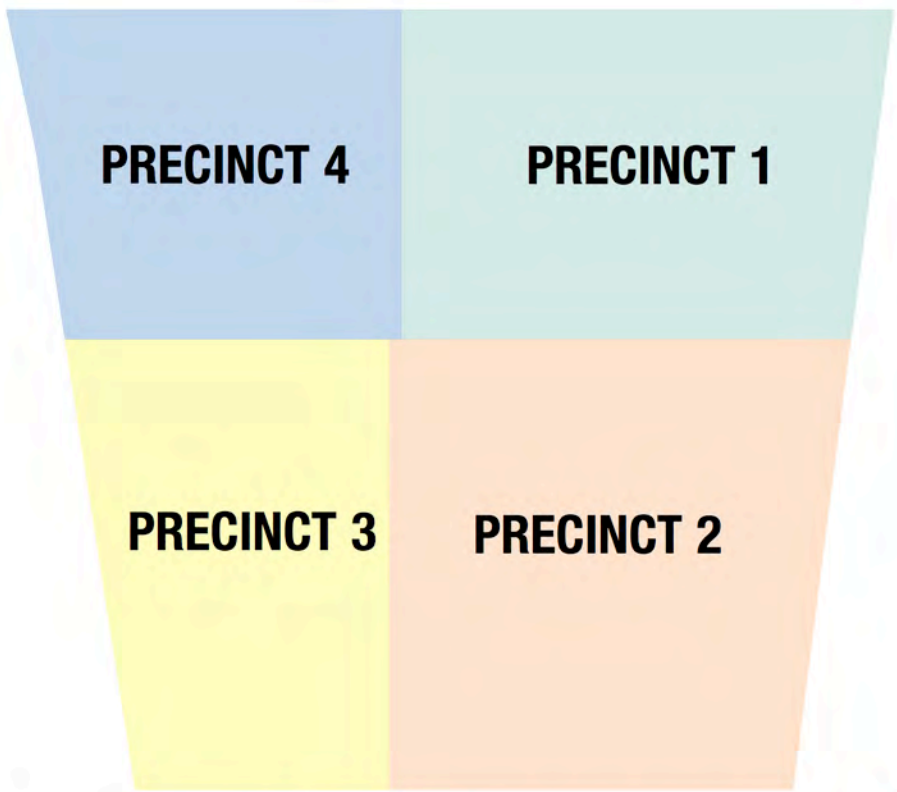
CHILDRENS PLAYGROUND



RECREATION OPEN / GREEN PLAZA



- Site Boundary
 --- Precinct 1 Boundary
 --- Precinct 2 Boundary
 --- Precinct 3 Boundary
 --- Precinct 4 Boundary
- PROGRAMME
- 1 Main Vehicle Access
 - 2 Square with Feature Tree
 - 3 Shared Way
 - 4 Pedestrian Plaza with cul de sac
 - 5 Residential Courtyard
 - 6 Decomposed Granite Recreation Space
 - 7 Park / Open Green Space
 - 8 External Seating and Dining Area
 - 9 Timber Bridge across Bio-retention Area
 - 10 Planted Arbour
 - 11 Pleached Trees
 - 12 Childcare Play Area
 - 13 Communal Garden
 - 14 Stormwater Filtration with Native Wetland Planting
 - 15 Drop off zone
 - 16 Car Parking Area / Semi Permeable
 - 17 Overflow carpark
- MATERIALS
- SEATING
 - QUALITY PAVING
 - CONCRETE PEDESTRIAN PAVING
 - VEHICLE CARRIAGE WAY
 - UNIT PAVERS
 - DECOMPOSED GRANITE
 - TIMBER
 - WATER
 - VEHICLE DIRECTIONAL MARKING
 - SEATING BENCH
 - OUTDOOR FURNITURE
 - BOLLARD
- PLANTING
- IRRIGATED LAWN IN 150MM GARDEN SOIL MIX AT GRADE
 - PROPOSED NATIVE SHRUBS/GROUNDCOVERS PLANTING IN 300MM DEPTH GARDEN SOIL MIX AT GRADE
 - PROPOSED NATIVE GRASSES IN 300MM DEPTH GARDEN SOIL MIX AT GRADE
 - FILTRATION BIOTOPE/BIOSWALE WITH NATIVE GRASS/WETLAND PLANTING IN 300MM DEPTH GARDEN SOIL MIX AT GRADE
 - PROPOSED NATIVE SHADE TOLERANT SHRUB/GROUNDCOVER PLANTING IN 300MM DEPTH GARDEN SOIL MIX AT GRADE
 - PROPOSED NATIVE FLOWERING GRASS/SHRUB/GROUNDCOVER PLANTING IN 300MM DEPTH GARDEN SOIL MIX AT GRADE
 - HEDGE PLANTING IN 300MM DEPTH GARDEN SOIL MIX AT GRADE
 - PROPOSED NATIVE TREE PLANTING
 - PROPOSED NATIVE SMALL TREE PLANTING
 - EXISTING TREES TO BE RETAINED. REFER TO ARBORIST REPORT
 - EXISTING TREES TO BE REMOVED. REFER TO ARBORIST REPORT



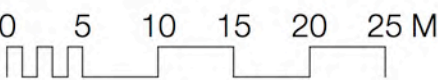
BLOOMFIELD PRIVATE HOSPITAL SITE

Forest Road

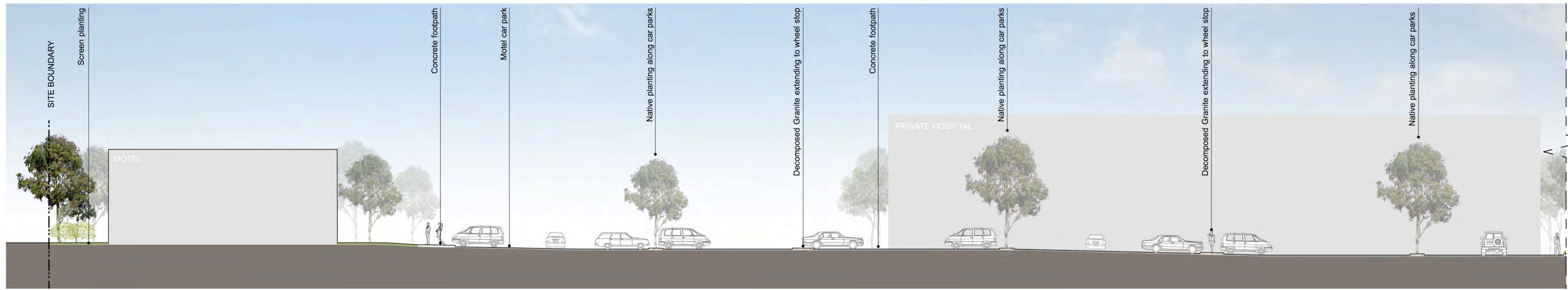
Orange

LANDSCAPE MASTERPLAN

REVISION F | SCALE 1:500 @ A1



03



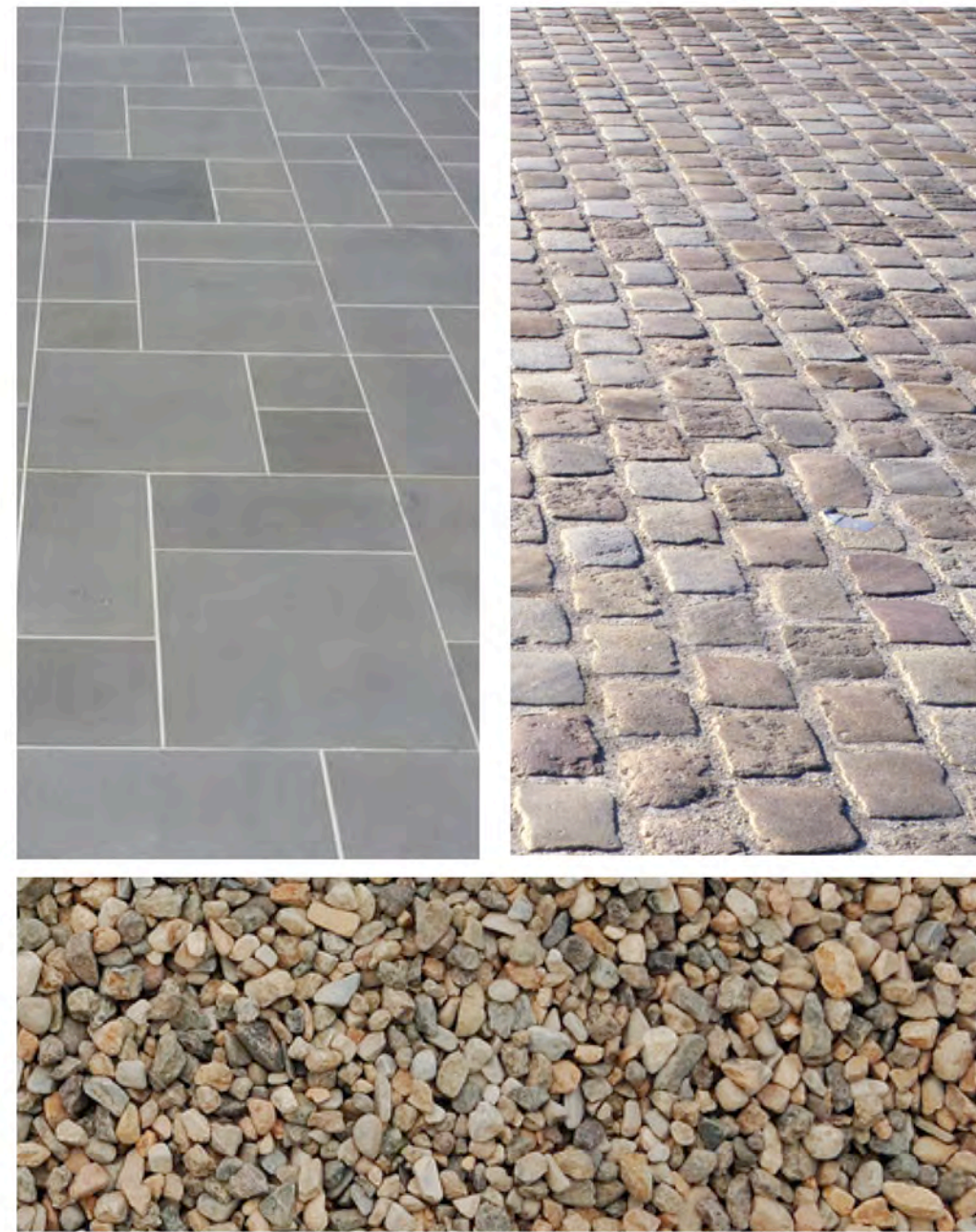
SECTION 1



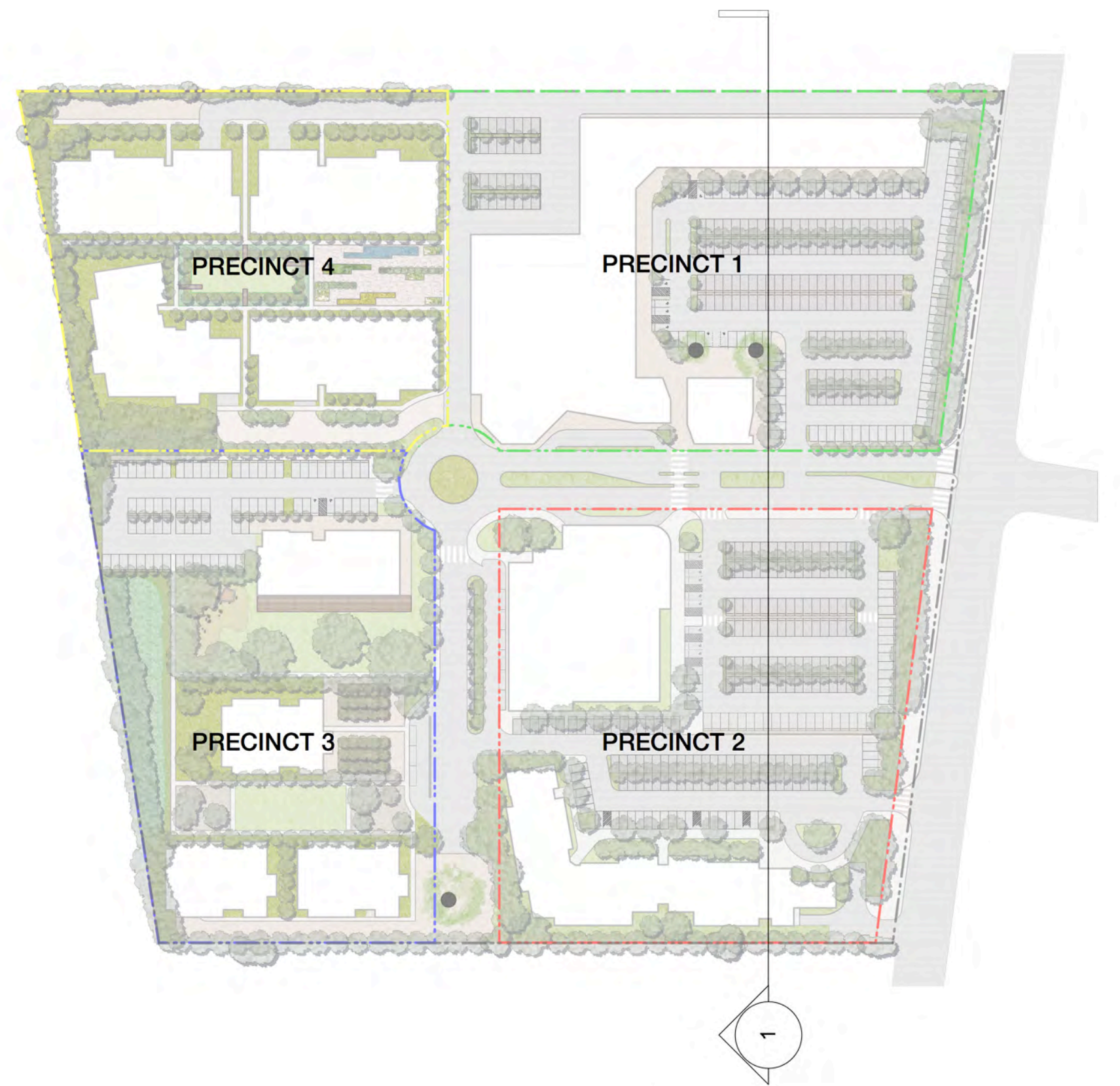
WSUD CAR PARK



URBAN PLAZA



PAVEMENTS



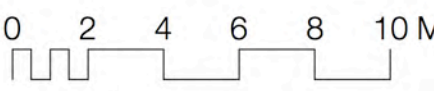
BLOOMFIELD PRIVATE HOSPITAL SITE

Forest Road

Orange

SECTION AND PRECEDENTS

REVISION E | SCALE 1:200 @ A1



04