

# Woollooware Bay Town Centre

## Foreshore Park - Section 75W

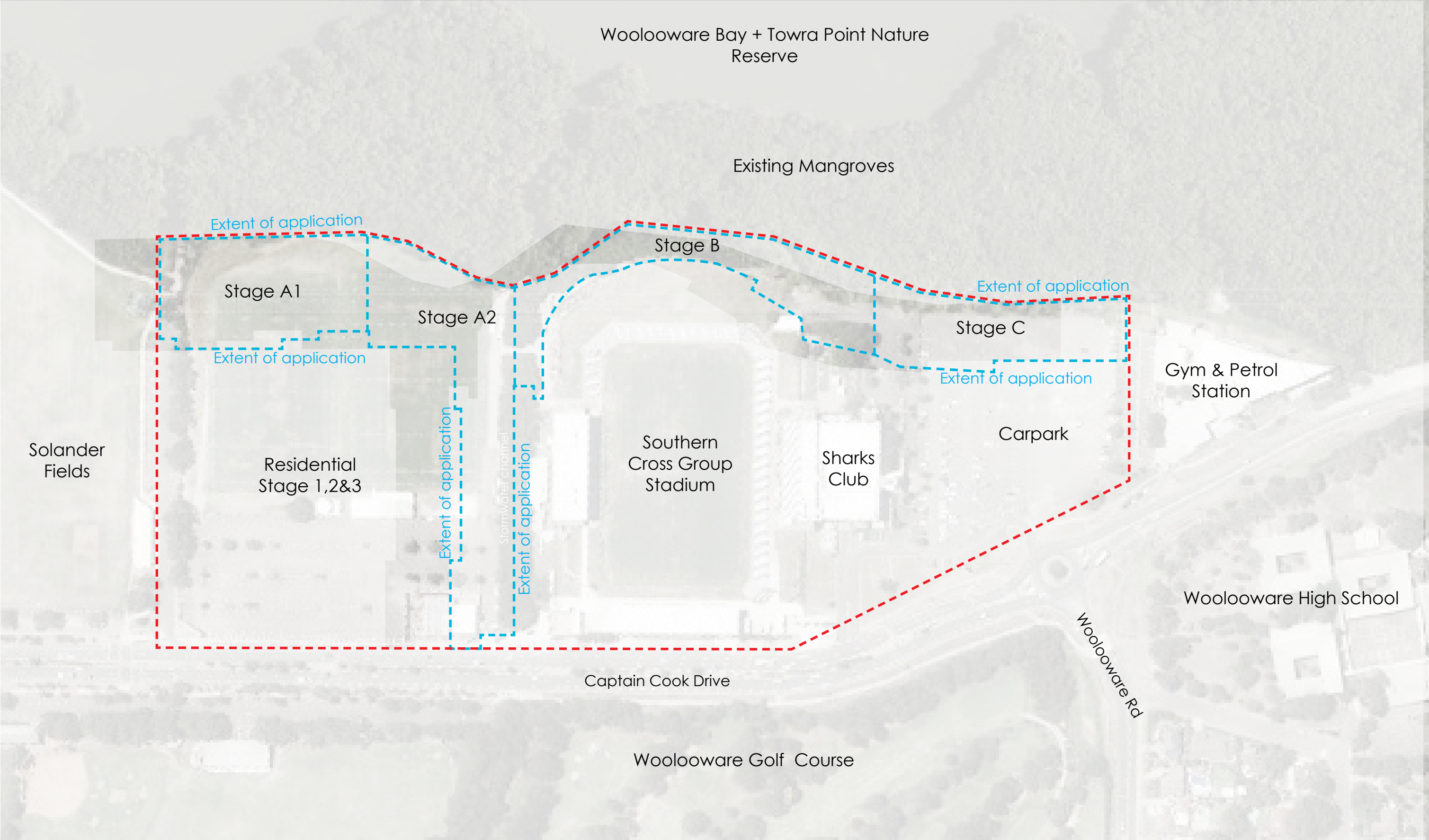
**Project** H8-16033

**Rev.** P

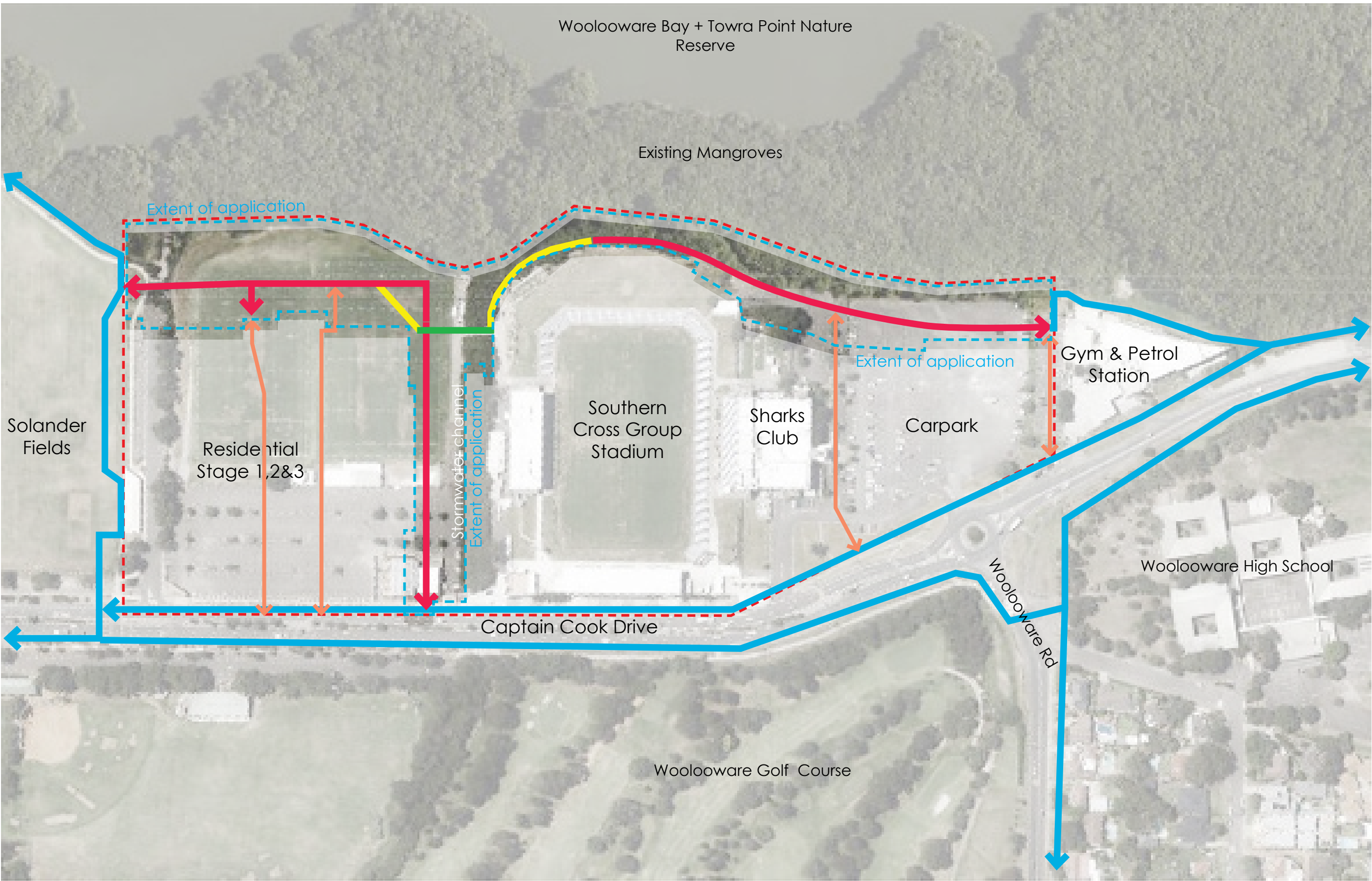
**Date** May 2017

**ISSUE** S75W Application





SITE PLAN  
KEY  
Extent of application  
Site Boundary



ACCESS CIRCULATION  
KEY  
Extent of application  
Site Boundary  
Proposed vehicle/pedestrian/cycle shared coastal pathways, (Width 4.0m)  
Proposed through - site links  
Existing Shared pedestrian / cycle paths  
Proposed pedestrian / cycle Bridge (width 2.5m)  
Proposed pedestrian / cycle shared path (width 3.5m)

EXISTING SITE IMAGES (Images referenced from Section 75W Report Revision A by Aspect Studios)



Existing power lines



Western playing fields and drainage channel



Existing mangrove water course



Retain existing mangroves



Existing mangrove boardwalk



Family Hill



Family Hill



The Southern Cross Group Stadium



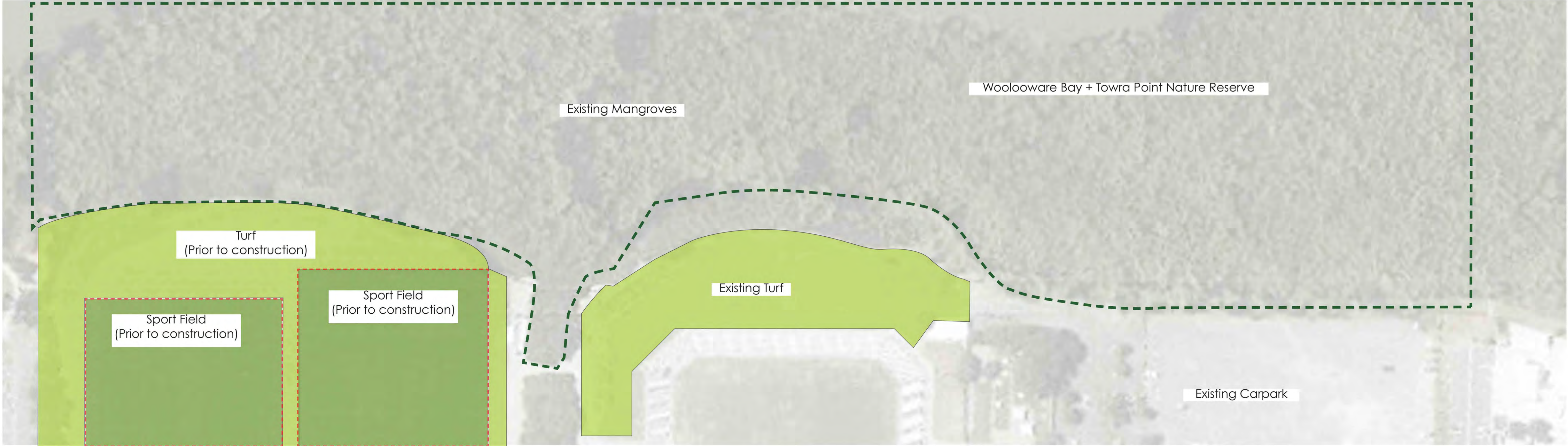
Existing trees along Family Hill



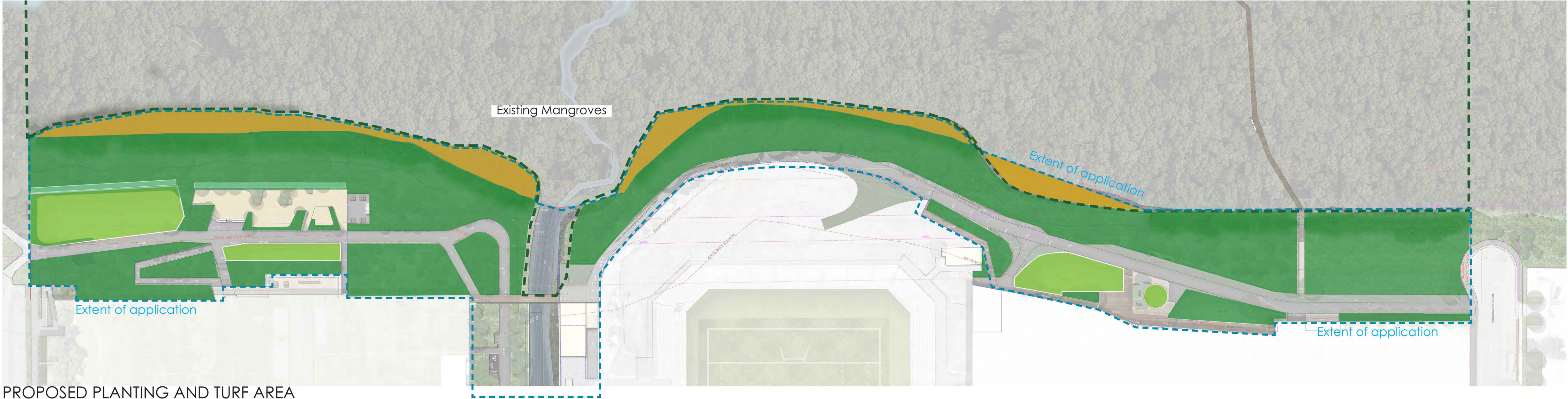
Existing Carpark

Client	Project	Project No.	Drawn	Revision	Date	Purpose
	Woollooware Bay Town Centre	H8-16033	HP		31.07.17	S75W Application
	Title	Drawing No.	Scale	Checked		
	Diagram Plan	L002	N/A	DV		







EXISTING MANGROVES AND TURF AREA

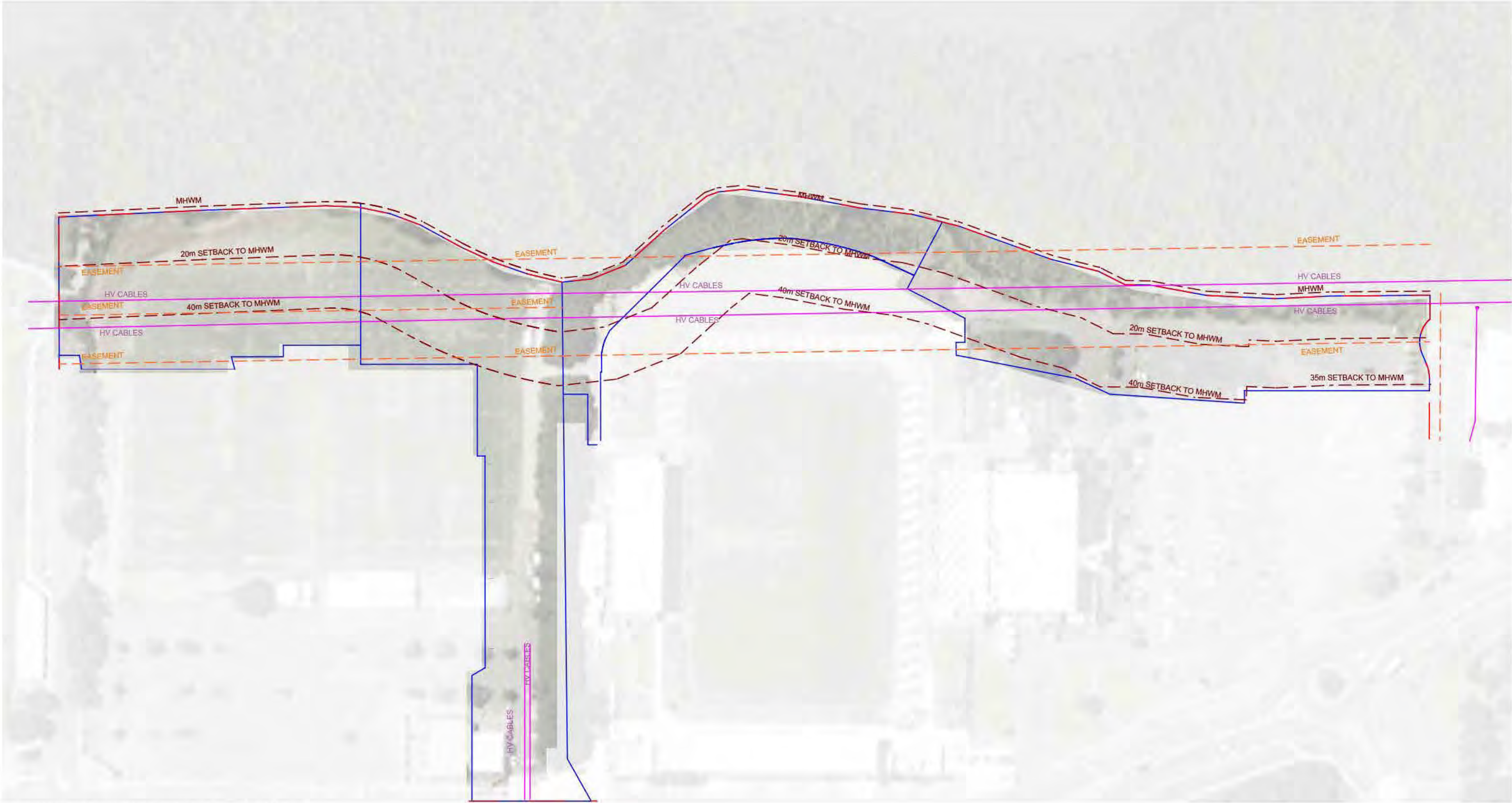


PROPOSED PLANTING AND TURF AREA



Client	Project	Project No.	Drawn	Revision	Date	Purpose
	<b>Woollooware Bay Town Centre</b>	H8-16033	HP	P	18.05.17	S75W Application
	Title	Drawing No.	Scale	Checked		
	<b>Proposed Planting and Turf Area</b>	L003	N/A	DV		





EXISTING AUSGRID EASEMENT CONDITION

KEY

SITE BOUNDARY	HV CABLES EASEMENT
STAGE BOUNDARY	MHW
HV CABLES	









KEY

- 01 Open turf area
- 02 Foreshore shared pathway (Width 4.0m)
- 03 BBQ and seating
- 04 Bridge across drainage channel
- 05 Existing Mangroves
- 06 Extended access road(Permeable paving for grass)
- 07 Fitness station
- 08 Touched By Olivia playground with range of accessible play equipment
- 09 Substation/Switch board
- 10 Gravel paving around Substation/Switch board
- 11 Drainage channel

- 12 Boardwalk/platform to building facade and through site link
- 13 Existing Trees to be retained
- 14 Public Toilet (under)
- 15 Proposed Club Compound
- 16 1.8m Palisade fence
- 17 Grass on embankment
- 18 Mangrove timber boardwalk
- 19 Salt Marsh Planting Refer to planting schedule
- 20 Swale Planting Refer to planting schedule
- 21 Lower Riparian Planting Refer to planting schedule
- 22 Upper Riparian Planting Outside Easement Refer to planting schedule
- 23 Upper Riparian Planting Inside Easement Refer to planting schedule
- 24 Mangrove rehabilitation area

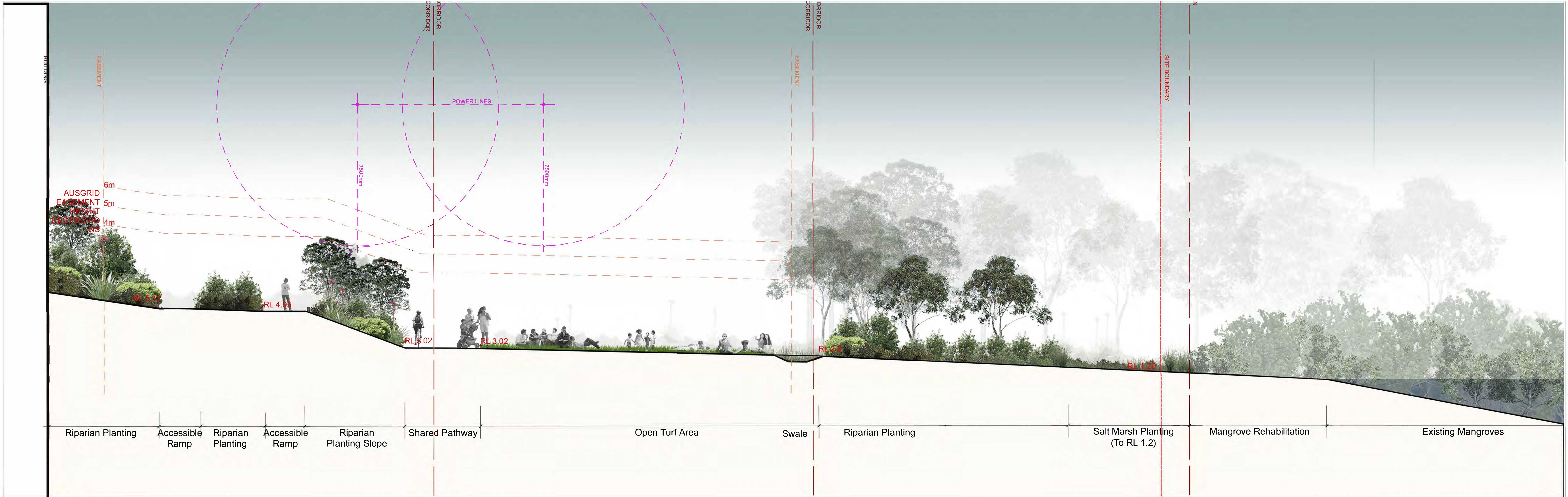
LANDSCAPE MASTERPLAN

Client	Project	Project No.	Drawn	Revision	Date	Purpose
	Woollooware Bay Town Centre	H8-16033	HP	P	18.05.17	S75W Application
	Title	Drawing No.	Scale	Checked	 Scale Bar	
	Landscape Masterplan	L005	1:800@A1	DV		

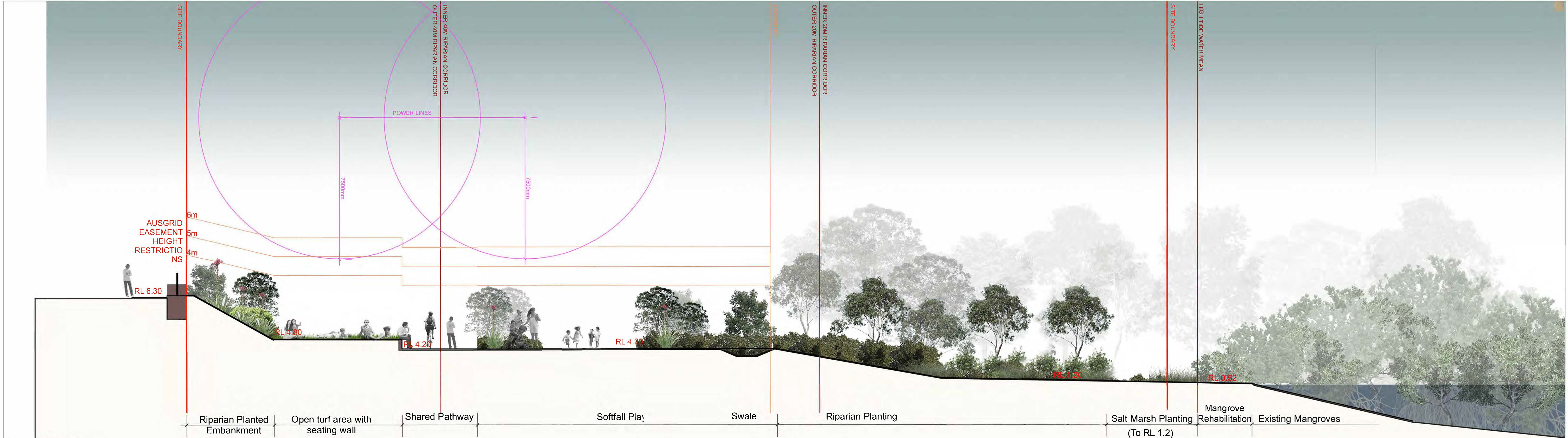
+61 (0)2 9360 7771  
habit8.com.au  
Studio 25 13-29 Nichols St  
Surry Hills, NSW 2010  
ABN: 19 164 285 250








SECTION A



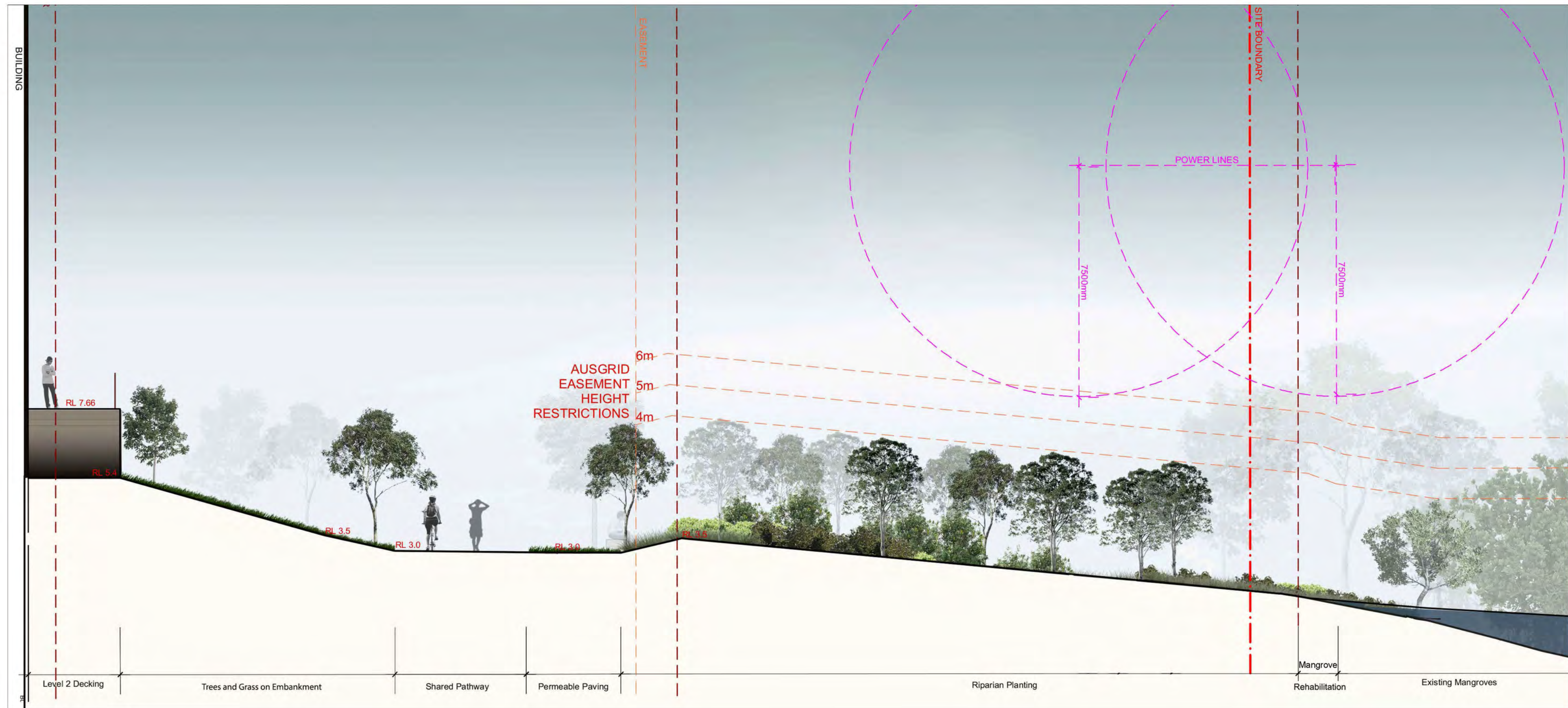
SECTION B

Client	Project	Project No.	Drawn	Revision	Date	Purpose
	Woollooware Bay Town Centre	H8-16033	HP	P	18.05.17	S75W Application
	Title	Drawing No.	Scale	Checked		
	Illustrative Sections	L006	N/A	DV		










SECTION E



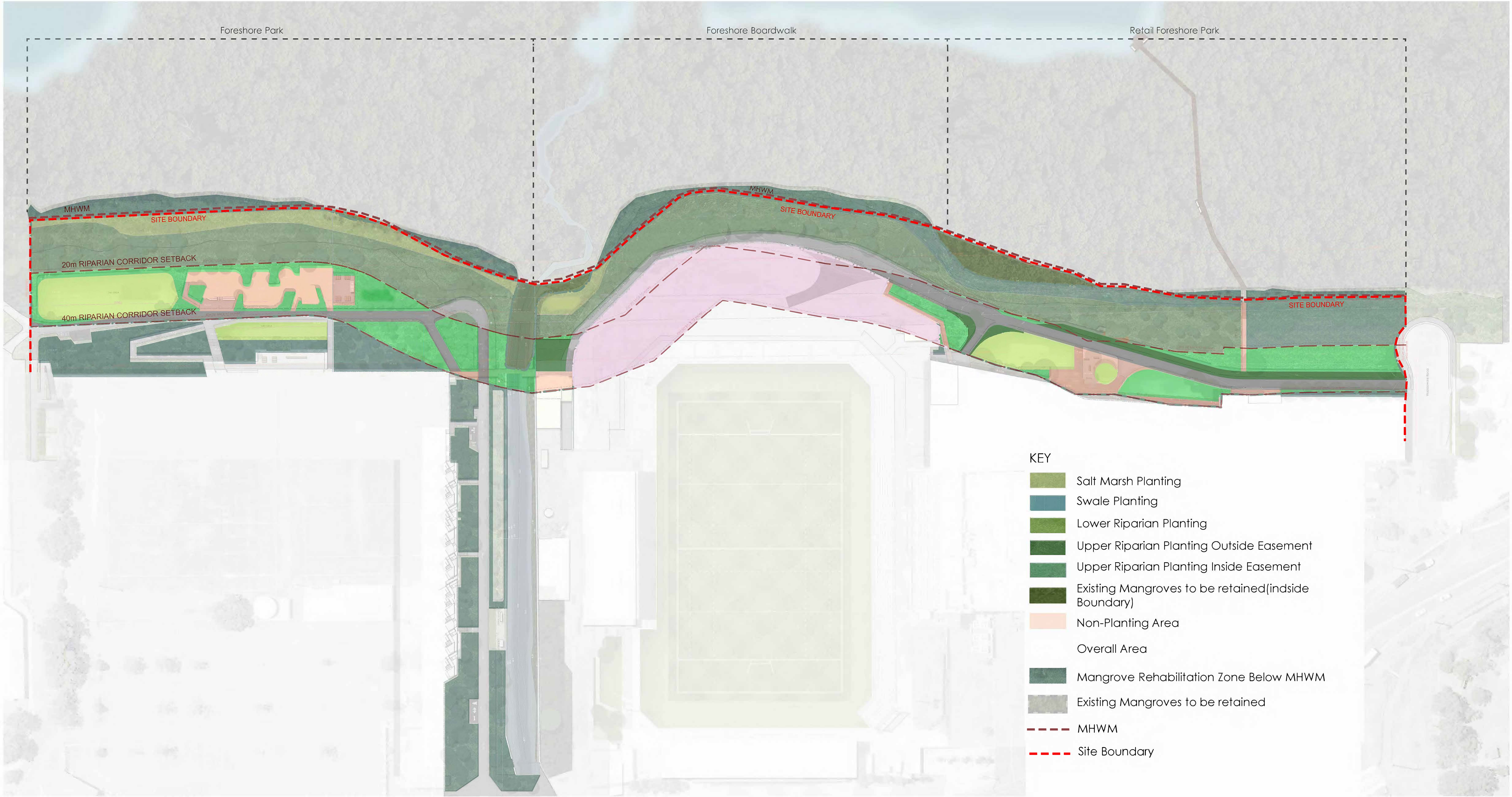
SECTION F





DESIGN IMAGES

Client	Project	Project No.	Drawn	Revision	Date	Purpose
	Wooloware Bay Town Centre	H8-16033	HP	P	18.05.17	S75W Application
	Title	Drawing No.	Scale	Checked		
	Illustrative Sections/Design Images	L008	N/A	DV		





Client	Project	Project No.	Drawn	Revision	Date	Purpose
	<b>Woollooware Bay Town Centre</b>	H8-16033	HP	P	18.05.17	S75W Application
	Title	Drawing No.	Scale	Checked		
	<b>Indicative Planting Strategy Plan</b>	L009	N/A	DV		



Planting Images

Salt Marsh Planting



Plant Schedule:

Botanic Name	Common Name
Groundcovers / Climbers	
<i>Samolus repens</i>	Creeping Brookweed
<i>Sarcocornia quinqueflora</i>	Samphire
<i>Selliera radicans</i>	Swampweed
<i>Suaeda australis</i>	Austral Seablite
<i>Tetragonia tetragonoides</i>	Native Spinach
<i>Zoysia macrantha</i>	Prickly Couch
Rushes / Grasses	
<i>Austrostipa stipoides</i>	Coastal Speargrass
<i>Baumea articulata</i>	Jointed Twig-rush
<i>Gahnia clarkei</i>	Tall Saw-sedge
<i>Juncus kraussii</i>	Sea Rush
<i>Sporobolus virginicus</i>	Saltwater Couch
<i>Triglochin striata</i>	Streaked Arrowgrass

Lower Riparian Planting



Plant Schedule:

Botanic Name	Common Name
Trees	
<i>Acmena smithii</i>	Lilly Pilly
<i>Alphitonia excelsa</i>	Red Ash
<i>Casuarina glauca</i>	Swamp Oak
<i>Cupaniopsis anacardioides</i>	Tuckeroo
<i>Eucalyptus robusta</i>	Swamp mahogany
<i>Glochidion ferdinandi</i>	Cheese Tree
<i>Melaleuca ericifolia</i>	Swamp Paperbark
<i>Melaleuca quinquenervia</i>	Broad Leaved Paperbark
<i>Melaleuca styphelioides</i>	Prickly Leaved Tea Tree
Rushes / Grasses	
<i>Baumea juncea</i>	Bare Twig Rush
<i>Carex appressa</i>	Tall Sedge
<i>Sporobolus virginicus</i>	Saltwater Couch
<i>Crinum pedunculatum</i>	Swamp Lily
<i>Dianella caerulea</i>	Blue Flax Lily
<i>Imperata cylindrica var. major</i>	Blady Grass
<i>Isolepis inundata</i>	Swamp Club Sedge
<i>Juncus kraussii</i>	Sea Rush
<i>Juncus planifolius</i>	Broad Leaf Rush
<i>Juncus usitatus</i>	Common Rush
<i>Lomandra longifolia</i>	Ribbon Grass
<i>Oplismenus imbecillis</i>	Basket Grass
Ferns / Herbs	
<i>Blechnum indicum</i>	Swamp-water Fern
<i>Centella asiatica</i>	Centella
<i>Commelina cyanea</i>	Scurvy Weed
<i>Hypolepis muelleri</i>	Harsh Ground Fern
<i>Persicaria decipiens</i>	Slender Knotweed
Vines	
<i>Parsonsia straminea</i>	Common Silkpod
<i>Stephania japonica</i>	Snake Vine

Swale Planting



Plant Schedule:

Botanic Name	Common Name
Trees	
<i>Melaleuca ericifolia</i>	Swamp Paperbark
<i>Melaleuca quinquenervia</i>	Broad Leaf Paperbark
Rushes / Grasses	
<i>Baumea juncea</i>	Bare Twig Rush
<i>Carex appressa</i>	Tall Sedge
<i>Dianella caerulea</i>	Flax Lily
<i>Juncus kraussii</i>	Common Rush
<i>Juncus usitatus</i>	Sea Rush
<i>Lomandra longifolia</i>	Spiny Headed Mat Rush

**Note:**  
All planting species selected are consistent with Coastal Saltmarsh, and Swamp Oak Floodplain Forest vegetation communities, and/or they are well represented in similar areas in the Kurnell peninsula

Planting images referenced from Section 75W Report Revision A by Aspect Studios)



Upper Riparian Planting Outside Easement



Plant Schedule:

Botanic Name	Common Name
Trees	
<i>Acmena smithii</i>	Lily Pilly
<i>Banksia marginata</i>	Silver Banksia
<i>Banksia serrata</i>	Saw Banksia
<i>Eucalyptus longifolia</i>	Woollybutt
<i>Eucalyptus robusta</i>	Swamp mahogany
<i>Ficus rubiginosa</i>	Rusty Fig
<i>Glochidion ferdinandi</i>	Cheese Tree
<i>Melaleuca ericifolia</i>	Swamp Paperbark
<i>Melaleuca linariifolia</i>	Snow-in-summer
Shrubs	
<i>Acacia longifolia - sophorae</i>	Coastal Wattle
<i>Banksia ericifolia</i>	Heath-leaved Bankis
<i>Banksia oblongifolia</i>	Fern-leaved Banksia
<i>Banksia spinulosa</i>	Hairpin Banksia
<i>Pittosporum revolutum</i>	Yellow pittosporum
<i>Melaleuca squamea</i>	swamp honey-myrtle
<i>Westringia fruticosa</i>	Coastal Rosemary
Groundcovers/Climbers	
<i>Carpobrotus glaucescens</i>	Pigface
<i>Centella asiatica</i>	Centella
<i>Hardenbergia violacea</i>	Native sarsaparilla
<i>Pratia purpurascens</i>	White Root
<i>Stephania japonica</i>	Snake vine
Rushes / Grasses	
<i>Dianella caerulea</i>	Blue Flax Lily
<i>Dichelachne crinita</i>	Longhair plume grass

Upper Riparian Planting Inside Easement



Plant Schedule:

Botanic Name	Common Name
Trees	
<i>Callistemon citrinus</i>	Crimson Bottlebrush
<i>Leptospermum polygalifolium</i>	Common Tea Tree
<i>Melaleuca linariifolia (dwarf)</i>	Narrow-leaf Paperbark
<i>Melaleuca ericifolia (Sml)</i>	Swamp Paperbark
Shrubs	
<i>Acacia longifolia - sophorae</i>	Coastal Wattle
<i>Banksia ericifolia</i>	Heath-leaved Bankis
<i>Banksia oblongifolia</i>	Fern-leaved Banksia
<i>Banksia spinulosa</i>	Hairpin Banksia
<i>Pittosporum revolutum</i>	Yellow pittosporum
<i>Melaleuca squamea</i>	swamp honey-myrtle
<i>Westringia fruticosa</i>	Coastal Rosemary
Groundcovers/Climbers	
<i>Carpobrotus glaucescens</i>	Pigface
<i>Centella asiatica</i>	Centella
<i>Hardenbergia violacea</i>	Native sarsaparilla
<i>Pratia purpurascens</i>	White Root
<i>Stephania japonica</i>	Snake vine
Rushes / Grasses	
<i>Dianella caerulea</i>	Blue Flax Lily
<i>Dichelachne crinita</i>	Longhair plume grass
<i>Juncus usitatus</i>	Common Rush
<i>Lomandra longifolia</i>	Spiny Head Mat Rush

**Note:**  
All planting species selected are consistent with Coastal Saltmarsh, and Swamp Oak Floodplain Forest vegetation communities, and/or they are well represented in similar areas in the Kurnell peninsula

Planting images referenced from Section 75W  
Report Revision A by Aspect Studios)