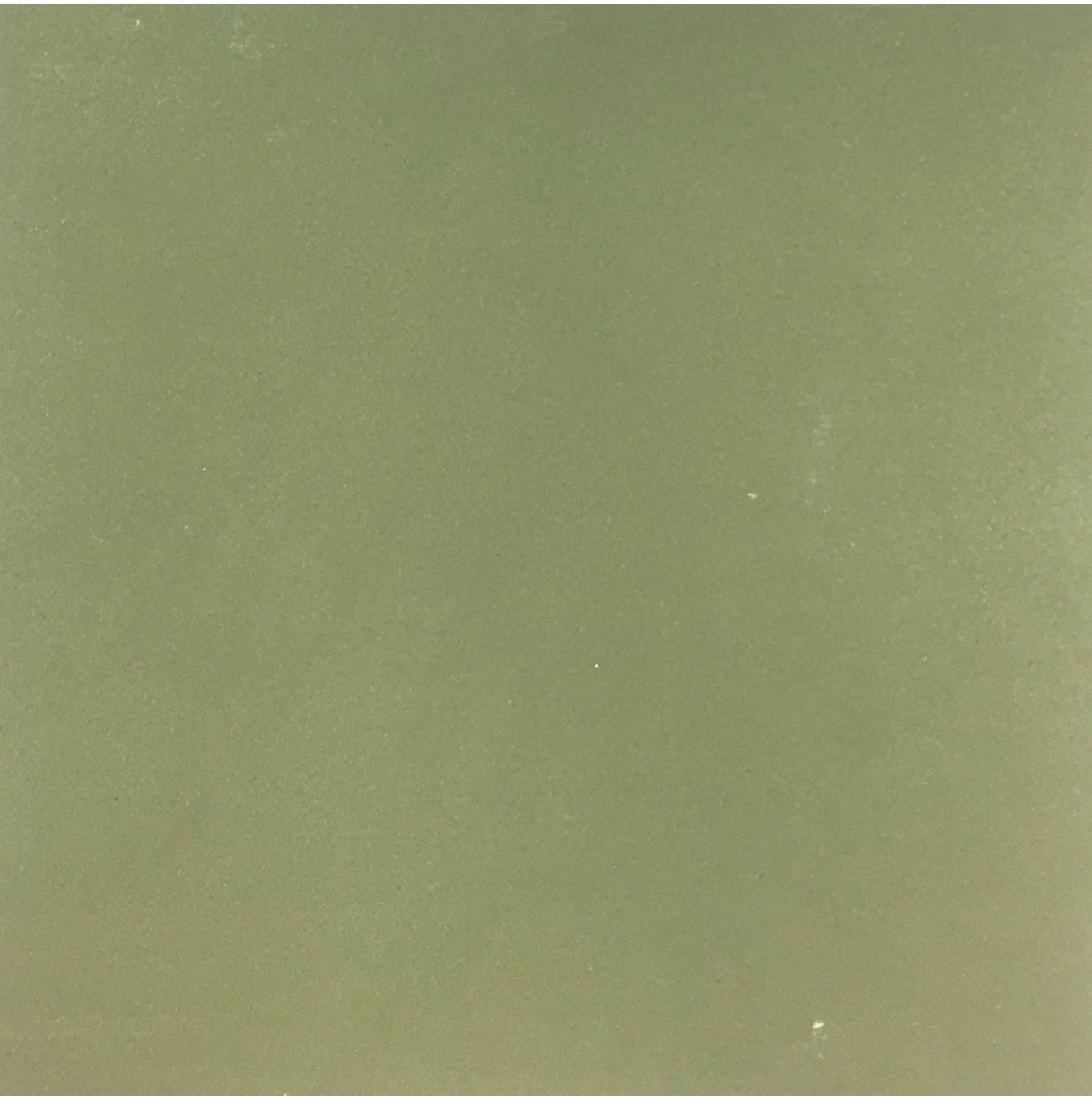


CLD1



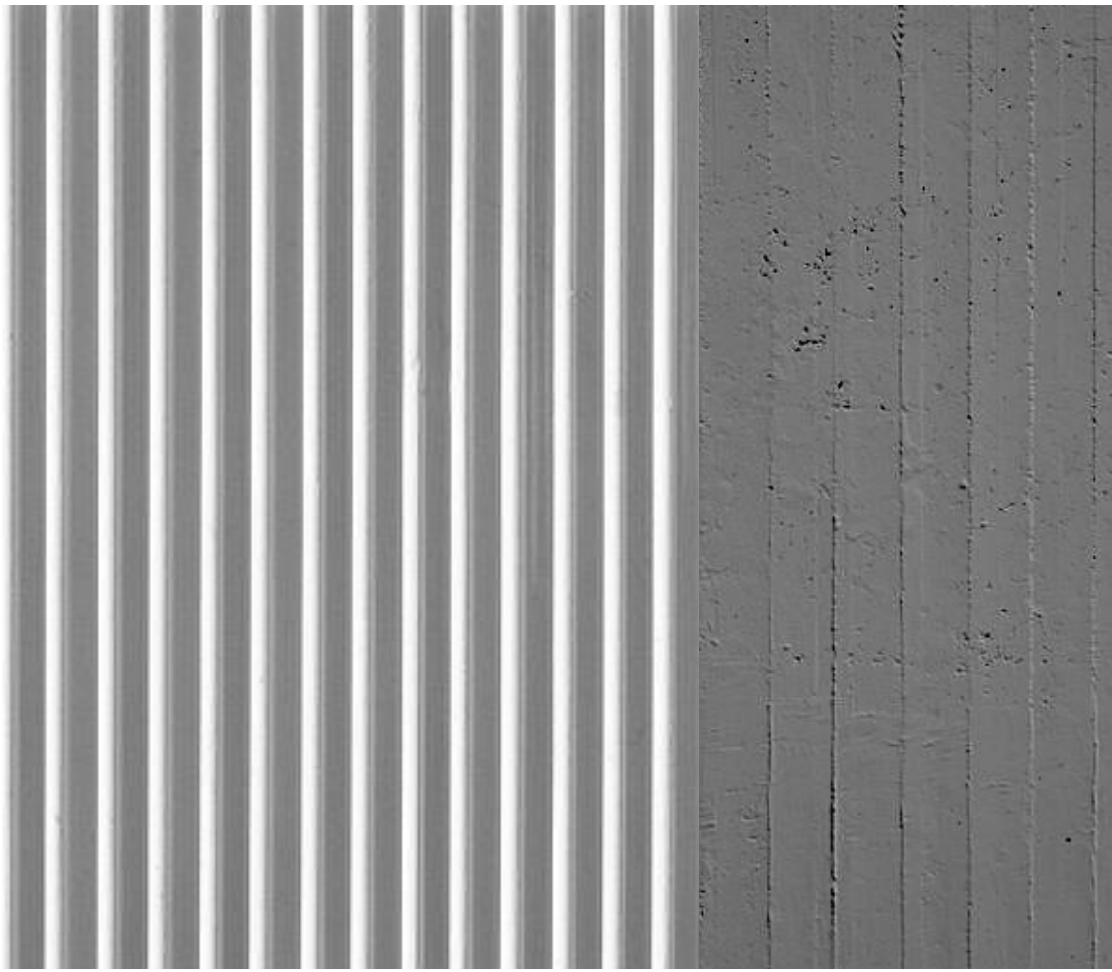
CLD1



CLD3

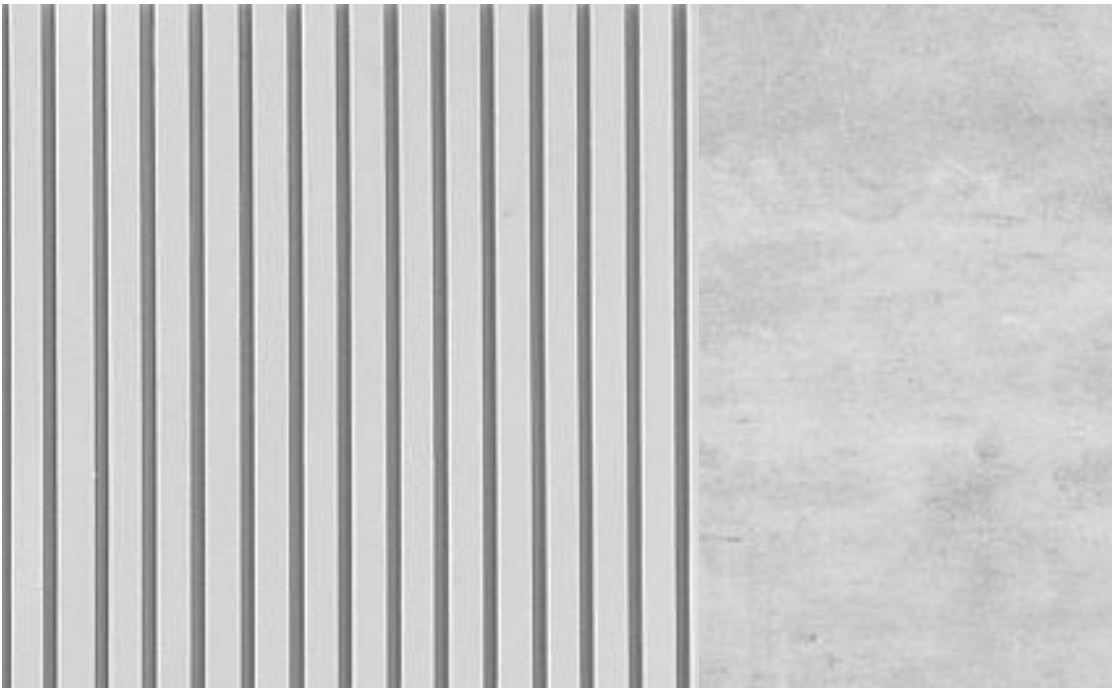


CLD3



CPC3

COF2



CPC2

COF1/CPC1



CLD1



PF3



MDR1



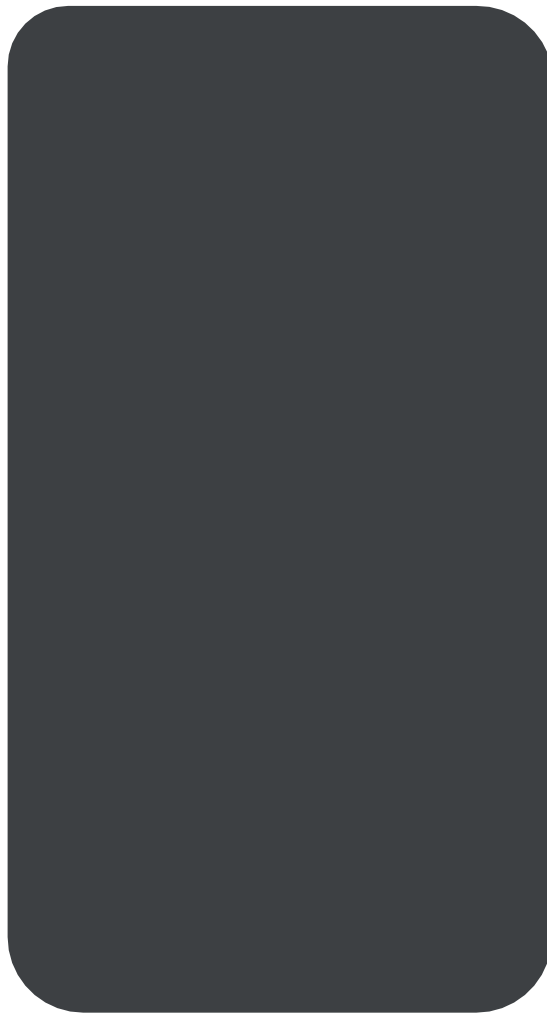
MDR1



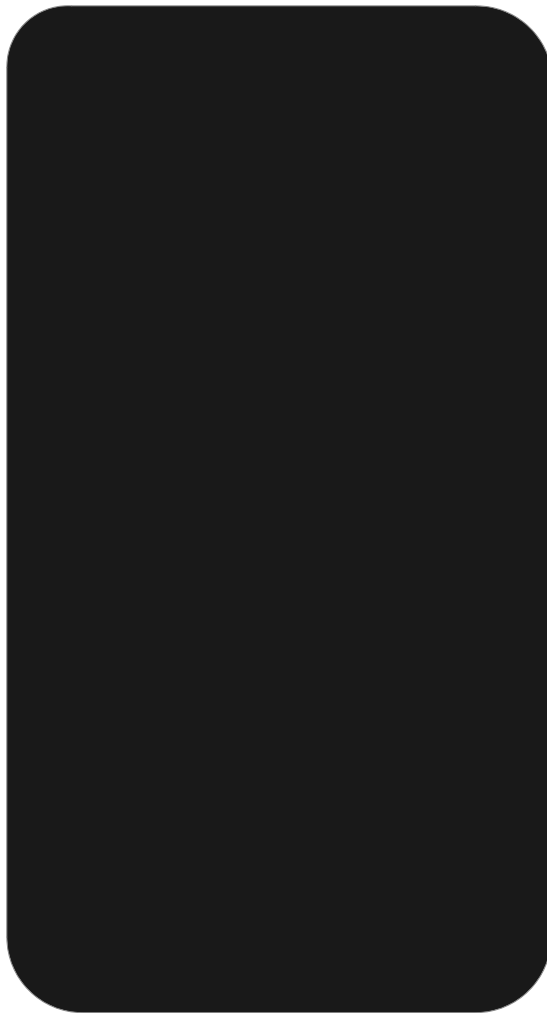
CLD2



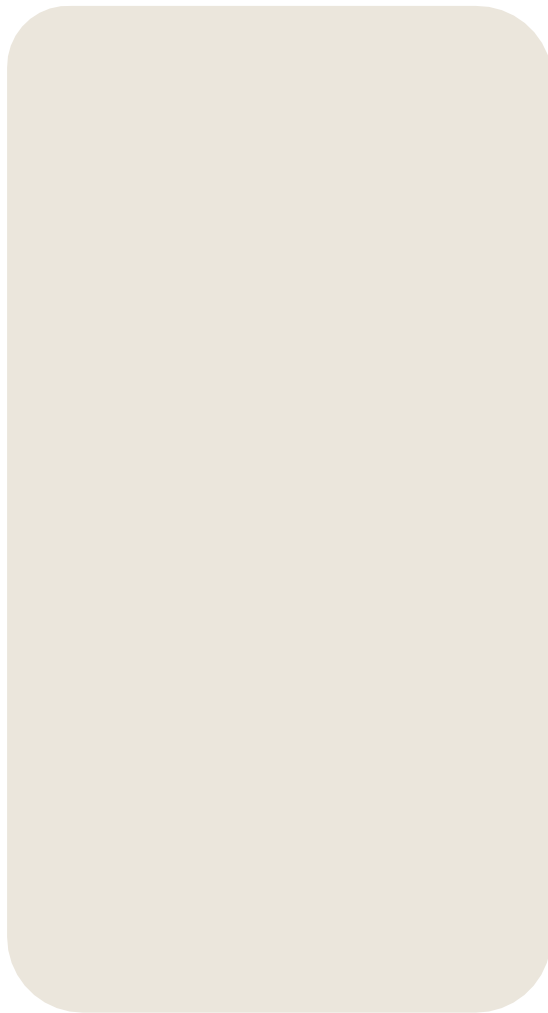
PF2



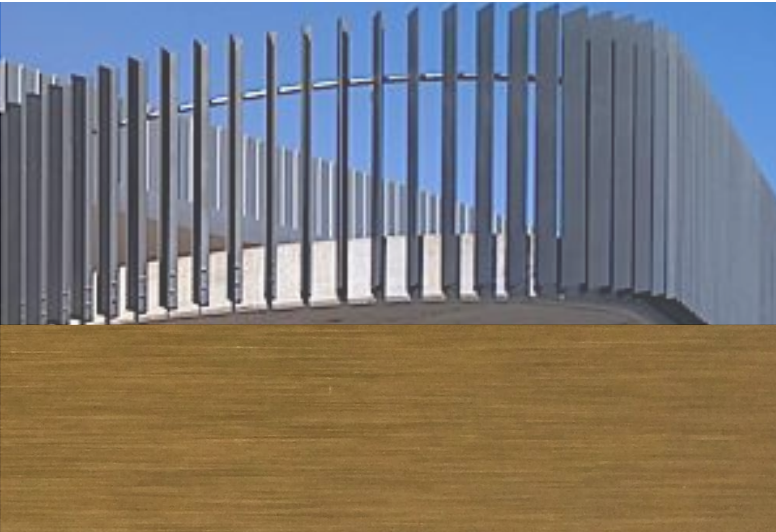
CLD4



CLD6



CLD5



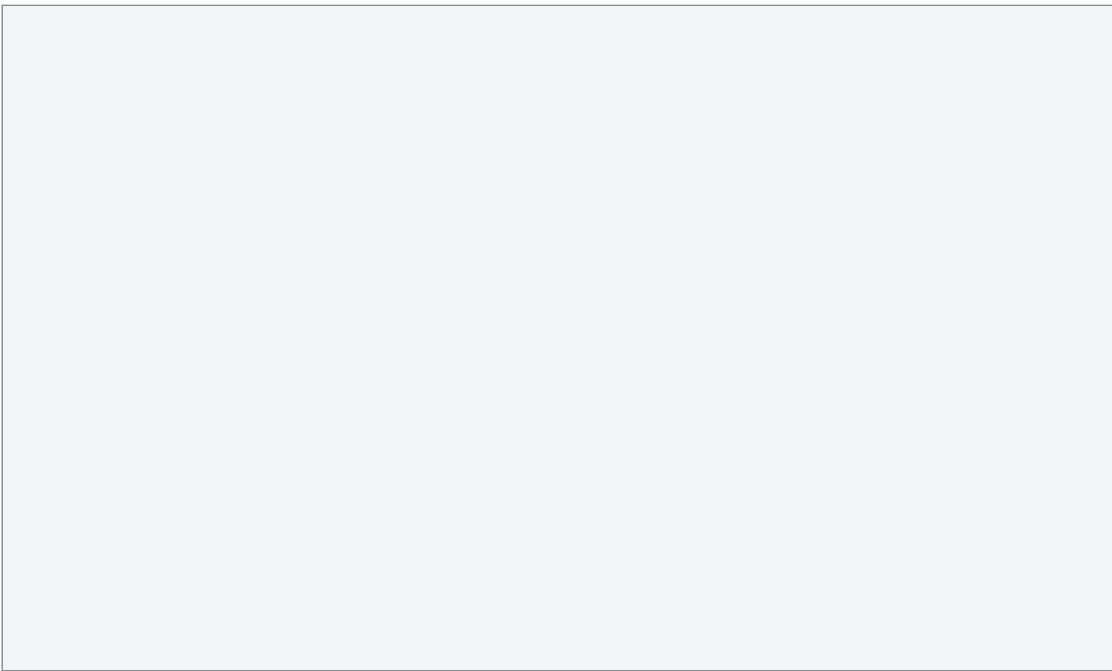
BAL1/HR1



PCF1



AWN1



PF1

Legend

- ART1 Art Feature, Type 1: Painted soffit to main entry lobby.
- ART2 Art Feature, Type 2: Embossed feature symbol into precast panel.
- ART3 Art Feature, Type 3: Existing art wall, preserved.
- AWN1 Awning, Type 1: Folded steel awning with decorative motif laser cut into leading edge. Paint finish equal to PF3.
- BAL1 Balustrade, Type 1: Vertical 100 x 10 steel baluster, no top rail. Balusters angled at 90°. Powder coat finish, colour and finish to match PCF1.
- BAL2 Balustrade, Type 2: Frameless clear glass balustrade system with separate steel flat bar handrail / stanchion support behind. Colour and finish to match PCF1.

- CLD1 Cladding, Type 1: Stone cladding system, random length stretcher bond. Finish split face and / or exfoliate finish. Coursing height varies between 75 and 150mm. Random stone selection to match Hawksbury sandstone, Port Fairy Bluestone and off white / grey speckled granite.
- CLD2 Cladding, Type 2: Timber cladding system, vertical 'V' jointed 90mm wide. Service doors integrated to match. Timber equal to Spotted Gum in appearance. Natural colour with pigmented oil finish.
- CLD3 Cladding, Type 3: Terracotta facade tile system, 175mm horizontal profile, colour range varies to suit facade concept and surface finish varies between glazed and natural. Facade system equal to NBR Architectural Terracotta. Colours and finishes equal to TERRAART natural and engobe colour range.
- CLD4 Cladding, Type 4: Metal cladding system, express jointed, with concealed essential service doors and louvers. Prefinished coating system. Colour and finish to match Alpolic 'Slate Grey' (MJ254-G30).
- CLD5 Cladding, Type 5: Metal cladding system, express jointed. Prefinished coating system. Colour and finish to match Alpolic 'Milk White' (M7774-G30).
- CLD6 Cladding, Type 6: Metal cladding system, express jointed. Prefinished coating system. Colour and finish to match Alpolic 'Charcoal' (M7991-G30).
- CPC1 Concrete, Off Form Finish, Type 1: Natural concrete, smooth board finish. Colour natural grey concrete mix. Penetrating clear matte sealer over.
- CPC2 Concrete, Off Form Finish, Type 2: Natural concrete, textured rough sawn timber board finish. Colour natural grey concrete mix. Penetrating clear matte sealer over.
- CPC3 Concrete, Precast, Type 1: Smooth finish concrete wall elements. Colour 'lite & bribe' concrete mix with white oxide pigment additive. Penetrating clear matte sealer over.
- CPC4 Concrete, Precast, Type 2: Decorative finish concrete wall elements, vertical square edged profiled form liner finish, 30mm spacing, 15mm depth equal to Reckli 2/77 'Tigris' profile. Colour equal to CPC1. Penetrating clear matte sealer over.
- CPC5 Concrete, Precast, Type 3: Decorative finish concrete wall elements, vertical radius profiled form liner finish, 30mm spacing, 32mm diam., 53mm depth equal to Reckli 2/94 'Orinoco' profile. Colour equal to CPC1. Penetrating clear matte sealer over.
- CPC6 Concrete, Precast, Type 4: Custom decorative pattern integrated to finished glass surface to enhance privacy.
- COF1 Concrete, Precast, Type 1: Smooth finish concrete wall elements. Colour 'lite & bribe' concrete mix with white oxide pigment additive. Penetrating clear matte sealer over.
- COF2 Concrete, Precast, Type 2: Decorative finish concrete wall elements, vertical square edged profiled form liner finish, 30mm spacing, 15mm depth equal to Reckli 2/77 'Tigris' profile. Colour equal to CPC1. Penetrating clear matte sealer over.
- COF3 Concrete, Precast, Type 3: Decorative finish concrete wall elements, vertical radius profiled form liner finish, 30mm spacing, 32mm diam., 53mm depth equal to Reckli 2/94 'Orinoco' profile. Colour equal to CPC1. Penetrating clear matte sealer over.
- COF4 Concrete, Precast, Type 4: Custom decorative pattern integrated to finished glass surface to enhance privacy.
- CLD1 Cladding, Type 1: Stone cladding system, random length stretcher bond. Finish split face and / or exfoliate finish. Coursing height varies between 75 and 150mm. Random stone selection to match Hawksbury sandstone, Port Fairy Bluestone and off white / grey speckled granite.
- CLD2 Cladding, Type 2: Timber cladding system, vertical 'V' jointed 90mm wide. Service doors integrated to match. Timber equal to Spotted Gum in appearance. Natural colour with pigmented oil finish.
- CLD3 Cladding, Type 3: Terracotta facade tile system, 175mm horizontal profile, colour range varies to suit facade concept and surface finish varies between glazed and natural. Facade system equal to NBR Architectural Terracotta. Colours and finishes equal to TERRAART natural and engobe colour range.
- CLD4 Cladding, Type 4: Metal cladding system, express jointed, with concealed essential service doors and louvers. Prefinished coating system. Colour and finish to match Alpolic 'Slate Grey' (MJ254-G30).
- CLD5 Cladding, Type 5: Metal cladding system, express jointed. Prefinished coating system. Colour and finish to match Alpolic 'Milk White' (M7774-G30).
- CLD6 Cladding, Type 6: Metal cladding system, express jointed. Prefinished coating system. Colour and finish to match Alpolic 'Charcoal' (M7991-G30).
- CPC1 Concrete, Off Form Finish, Type 1: Natural concrete, smooth board finish. Colour natural grey concrete mix. Penetrating clear matte sealer over.
- CPC2 Concrete, Off Form Finish, Type 2: Natural concrete, textured rough sawn timber board finish. Colour natural grey concrete mix. Penetrating clear matte sealer over.
- CPC3 Concrete, Precast, Type 1: Smooth finish concrete wall elements. Colour 'lite & bribe' concrete mix with white oxide pigment additive. Penetrating clear matte sealer over.
- CPC4 Concrete, Precast, Type 2: Decorative finish concrete wall elements, vertical square edged profiled form liner finish, 30mm spacing, 15mm depth equal to Reckli 2/77 'Tigris' profile. Colour equal to CPC1. Penetrating clear matte sealer over.
- CPC5 Concrete, Precast, Type 3: Decorative finish concrete wall elements, vertical radius profiled form liner finish, 30mm spacing, 32mm diam., 53mm depth equal to Reckli 2/94 'Orinoco' profile. Colour equal to CPC1. Penetrating clear matte sealer over.
- CPC6 Concrete, Precast, Type 4: Custom decorative pattern integrated to finished glass surface to enhance privacy.
- COF1 Concrete, Precast, Type 1: Smooth finish concrete wall elements. Colour 'lite & bribe' concrete mix with white oxide pigment additive. Penetrating clear matte sealer over.
- COF2 Concrete, Precast, Type 2: Decorative finish concrete wall elements, vertical square edged profiled form liner finish, 30mm spacing, 15mm depth equal to Reckli 2/77 'Tigris' profile. Colour equal to CPC1. Penetrating clear matte sealer over.
- COF3 Concrete, Precast, Type 3: Decorative finish concrete wall elements, vertical radius profiled form liner finish, 30mm spacing, 32mm diam., 53mm depth equal to Reckli 2/94 'Orinoco' profile. Colour equal to CPC1. Penetrating clear matte sealer over.
- COF4 Concrete, Precast, Type 4: Custom decorative pattern integrated to finished glass surface to enhance privacy.

- CLD1 Cladding, Type 1: Stone cladding system, random length stretcher bond. Finish split face and / or exfoliate finish. Coursing height varies between 75 and 150mm. Random stone selection to match Hawksbury sandstone, Port Fairy Bluestone and off white / grey speckled granite.
- CLD2 Cladding, Type 2: Timber cladding system, vertical 'V' jointed 90mm wide. Service doors integrated to match. Timber equal to Spotted Gum in appearance. Natural colour with pigmented oil finish.
- CLD3 Cladding, Type 3: Terracotta facade tile system, 175mm horizontal profile, colour range varies to suit facade concept and surface finish varies between glazed and natural. Facade system equal to NBR Architectural Terracotta. Colours and finishes equal to TERRAART natural and engobe colour range.
- CLD4 Cladding, Type 4: Metal cladding system, express jointed, with concealed essential service doors and louvers. Prefinished coating system. Colour and finish to match Alpolic 'Slate Grey' (MJ254-G30).
- CLD5 Cladding, Type 5: Metal cladding system, express jointed. Prefinished coating system. Colour and finish to match Alpolic 'Milk White' (M7774-G30).
- CLD6 Cladding, Type 6: Metal cladding system, express jointed. Prefinished coating system. Colour and finish to match Alpolic 'Charcoal' (M7991-G30).
- CPC1 Concrete, Off Form Finish, Type 1: Natural concrete, smooth board finish. Colour natural grey concrete mix. Penetrating clear matte sealer over.
- CPC2 Concrete, Off Form Finish, Type 2: Natural concrete, textured rough sawn timber board finish. Colour natural grey concrete mix. Penetrating clear matte sealer over.
- CPC3 Concrete, Precast, Type 1: Smooth finish concrete wall elements. Colour 'lite & bribe' concrete mix with white oxide pigment additive. Penetrating clear matte sealer over.
- CPC4 Concrete, Precast, Type 2: Decorative finish concrete wall elements, vertical square edged profiled form liner finish, 30mm spacing, 15mm depth equal to Reckli 2/77 'Tigris' profile. Colour equal to CPC1. Penetrating clear matte sealer over.
- CPC5 Concrete, Precast, Type 3: Decorative finish concrete wall elements, vertical radius profiled form liner finish, 30mm spacing, 32mm diam., 53mm depth equal to Reckli 2/94 'Orinoco' profile. Colour equal to CPC1. Penetrating clear matte sealer over.
- CPC6 Concrete, Precast, Type 4: Custom decorative pattern integrated to finished glass surface to enhance privacy.
- COF1 Concrete, Precast, Type 1: Smooth finish concrete wall elements. Colour 'lite & bribe' concrete mix with white oxide pigment additive. Penetrating clear matte sealer over.
- COF2 Concrete, Precast, Type 2: Decorative finish concrete wall elements, vertical square edged profiled form liner finish, 30mm spacing, 15mm depth equal to Reckli 2/77 'Tigris' profile. Colour equal to CPC1. Penetrating clear matte sealer over.
- COF3 Concrete, Precast, Type 3: Decorative finish concrete wall elements, vertical radius profiled form liner finish, 30mm spacing, 32mm diam., 53mm depth equal to Reckli 2/94 'Orinoco' profile. Colour equal to CPC1. Penetrating clear matte sealer over.
- COF4 Concrete, Precast, Type 4: Custom decorative pattern integrated to finished glass surface to enhance privacy.

- CPC1 Concrete, Off Form Finish, Type 1: Natural concrete, smooth board finish. Colour natural grey concrete mix. Penetrating clear matte sealer over.
- CPC2 Concrete, Off Form Finish, Type 2: Natural concrete, textured rough sawn timber board finish. Colour natural grey concrete mix. Penetrating clear matte sealer over.
- CPC3 Concrete, Precast, Type 1: Smooth finish concrete wall elements. Colour 'lite & bribe' concrete mix with white oxide pigment additive. Penetrating clear matte sealer over.
- CPC4 Concrete, Precast, Type 2: Decorative finish concrete wall elements, vertical square edged profiled form liner finish, 30mm spacing, 15mm depth equal to Reckli 2/77 'Tigris' profile. Colour equal to CPC1. Penetrating clear matte sealer over.
- CPC5 Concrete, Precast, Type 3: Decorative finish concrete wall elements, vertical radius profiled form liner finish, 30mm spacing, 32mm diam., 53mm depth equal to Reckli 2/94 'Orinoco' profile. Colour equal to CPC1. Penetrating clear matte sealer over.
- CPC6 Concrete, Precast, Type 4: Custom decorative pattern integrated to finished glass surface to enhance privacy.
- COF1 Concrete, Precast, Type 1: Smooth finish concrete wall elements. Colour 'lite & bribe' concrete mix with white oxide pigment additive. Penetrating clear matte sealer over.
- COF2 Concrete, Precast, Type 2: Decorative finish concrete wall elements, vertical square edged profiled form liner finish, 30mm spacing, 15mm depth equal to Reckli 2/77 'Tigris' profile. Colour equal to CPC1. Penetrating clear matte sealer over.
- COF3 Concrete, Precast, Type 3: Decorative finish concrete wall elements, vertical radius profiled form liner finish, 30mm spacing, 32mm diam., 53mm depth equal to Reckli 2/94 'Orinoco' profile. Colour equal to CPC1. Penetrating clear matte sealer over.
- COF4 Concrete, Precast, Type 4: Custom decorative pattern integrated to finished glass surface to enhance privacy.

- FT1 Facade Glazing System, Type 1: Street Level Entry Foyer & Associated Spaces. Glass, clear. Framing system, front faced glazing system with decorative 300mm projecting vertical mullions. Aluminium, powder coat finish. Structural steel supports fully concealed. Colour and finish to match PCF1. Refer to Section J assessment for performance requirements. Reflectivity to be less than 20%.
- FT2 Facade Glazing System, Type 2: Decorative Bay Window Elements. Glass, clear. Front faced glazing system with shadow box glazing detail to conceal spandrel and slab edge elements. Aluminium, powder coat finish. Colour and finish to match PCF1. Refer to Section J assessment for performance requirements. Reflectivity to be less than 20%.
- FT3 Facade Glazing System, Type 3: Window Wall Elements. Glass, grey body tint. Front faced glazing system with shadow box glazing detail to conceal spandrel and slab edge elements. Aluminium, powder coat finish. Colour and finish to match PCF1. Refer to Section J assessment for performance requirements. Reflectivity to be less than 20%.
- FT4 Facade Glazing System, Type 4: Infill Windows. Glass, clear. Framing system, aluminium, powder coat finish. Mechanical louvers integral to frame system. Matching aluminium cover plates to conceal slab edges and adjacent wall elements. Framing colour to match PCF1. Refer to Section J assessment for performance requirements. Reflectivity to be less than 20%.
- FT5 Facade Glazing System, Type 5: Infill Windows. Glass, grey body tint. Framing system, aluminium, with decorative 150mm projecting vertical fins and aluminium slab extension. Powder coat finish, colour to match PCF1. Refer to Section J assessment for performance requirements. Reflectivity to be less than 20%.
- GT1 Gate, Type 1: Decorative timber and steel entry gate. Timber equal to CLD2 material and finish. Steel, paint finish, equal to PF3.
- HR1 Handrail, Type 1: Decorative handrail to street level interface. 32mm diam. steel, bronze finish.

- LV1 Louvre Roof, Type 1: Fixed horizontal elliptical aluminium louvre system, 250mm profile. Angle set to shield view of plant from upper levels. Powder coat finish, colour and finish to match PCF1.
- MDR1 Metal Deck Roofing, Type 1: Standing seam profiled roofing system to match Lysaght 'Longline 305' profile. Colour to match Colorbond 'Monument'.
- PCF1 Powdercoat Finish, Type 1: Colour and finish to match Dulux - 'Fluorocet 'Xtreme Charcoal' satin (9647297M)'. Paint Finish, Type 1: Pigment stain paint system, equal to Keim Concretal Lasur System. Pigment. 30% concentration / opacity. Colour 'White / Weiss' (9872).
- PF1 Paint Finish, Type 2: Pigment stain paint system, equal to Keim Concretal Lasur System. Pigment. 70% concentration / opacity. Colour 'Black / Schwartz' (9008).
- PF2 Paint Finish, Type 3: Colour and finish to match Dulux - 'Micaceous Iron Oxide 'Mid Grey'.
- PV1 Paving, Type 1: Natural stone paving to external steps, landings and foyer areas. Refer to Landscape documentation for further information.
- SC1 Screen, Type 1: Fixed vertical elliptical aluminium louvre system, 250mm profile. Powder coat finish, colour and finish to match PCF1.
- SG1 Signage, Type 1: Integral building identification signage, surface fixed onto building facade. Bronze finish. Size and extent as per elevation drawings.
- VH1 Ventilation Hatch, Type 1: Aluminium ventilation hatch integrated with glazing. Aluminium, powder coat finish. Colour and finish to match PCF1.

- PF1 Paint Finish, Type 2: Pigment stain paint system, equal to Keim Concretal Lasur System. Pigment. 70% concentration / opacity. Colour 'Black / Schwartz' (9008).
- PF2 Paint Finish, Type 3: Colour and finish to match Dulux - 'Micaceous Iron Oxide 'Mid Grey'.
- PV1 Paving, Type 1: Natural stone paving to external steps, landings and foyer areas. Refer to Landscape documentation for further information.
- SC1 Screen, Type 1: Fixed vertical elliptical aluminium louvre system, 250mm profile. Powder coat finish, colour and finish to match PCF1.
- SG1 Signage, Type 1: Integral building identification signage, surface fixed onto building facade. Bronze finish. Size and extent as per elevation drawings.
- VH1 Ventilation Hatch, Type 1: Aluminium ventilation hatch integrated with glazing. Aluminium, powder coat finish. Colour and finish to match PCF1.

Note Refer to Landscape documentation for public domain and landscape areas for further information regarding materials and finishes selection.

NOTES  
THIS DRAWING IS COPYRIGHT © OF TURNER. NO REPRODUCTION WITHOUT PERMISSION. UNLESS NOTED OTHERWISE THIS DRAWING IS NOT FOR CONSTRUCTION. ALL DIMENSIONS AND LEVELS ARE TO BE CHECKED ON SITE PRIOR TO THE COMMENCEMENT OF WORK. INFORM TURNER OF ANY DISCREPANCIES FOR CLARIFICATION BEFORE PROCEEDING WITH WORK. DRAWINGS ARE NOT TO BE SCALED. USE ONLY FIGURED DIMENSIONS. REFER TO CONSULTANT DOCUMENTATION FOR FURTHER INFORMATION.

CLIENT  
**Aboriginal Housing Company**  
83-123 Eveleigh Street Redfern NSW 2016 Australia

Rev	Date	Approved by	Revision Notes
N	29/05/17	DS	Issue for Consultant Coordination
P	02/06/17	DS	Issue for DA Submission - Client Approval
R	07/06/17	DS	Issue for DA Submission - DRP
S	09/06/17	DS	Issue for DA Submission - DoP

Project Title  
**Col James - Student Accommodation**  
83-123 Eveleigh Street Redfern NSW 2016 Australia

Drawing Title  
**Materials and Finishes Sample Board**

Scale	Project No.	Drawn by	North
N.T.S.	16107	CB	
Status	Dwg No.	Rev	
Development Application	DA-960-001	S	

**TURNER**

Level 7 ONE Oxford Street  
Durlinghurst NSW 2010  
AUSTRALIA

T +61 2 8668 0000  
F +61 2 8668 0088  
turnerstudio.com.au