

Legend

ART1 Art Feature, Type 1:
Painted scuff to main entry lobby.

ART2 Art Feature, Type 2:
Embossed feature symbol into precast panel.

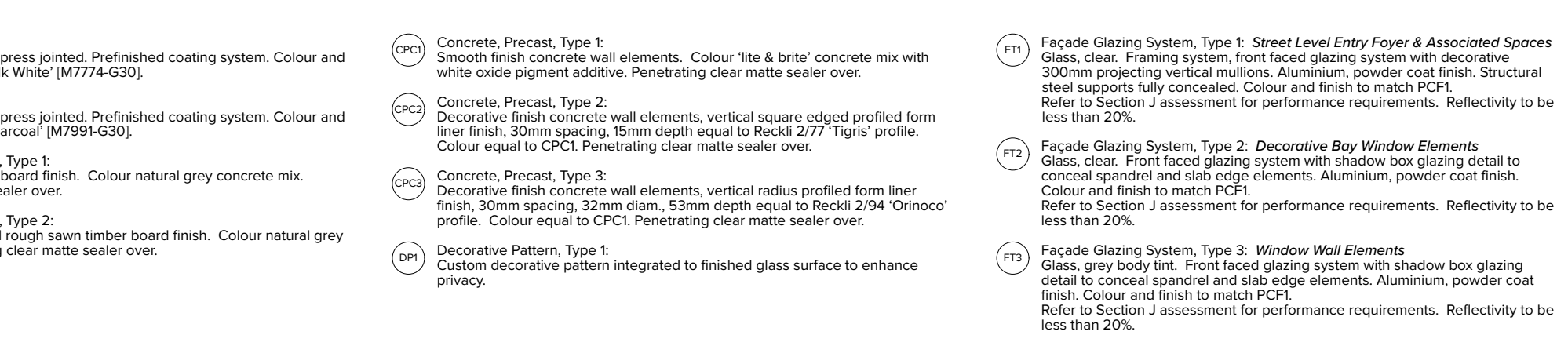
ART3 Art Feature, Type 3:
Engraving art wall, preserved.

WVWV Wavy: Type 1:
Folded steel waving with decorative motif laser cut into leading edge. Paint finish equal to PF-3.

BALL Balustrade, Type 1:
Vertical steel x to steel balustrade, top rail. Balusters angled at 90°. Powder coat finish, colour and finish to match PF.

Balustrade, Type 2:
Frameless clear glass balustrade system with separate steel flat bar handrail / stanchion support behind, colour and finish to match PF.

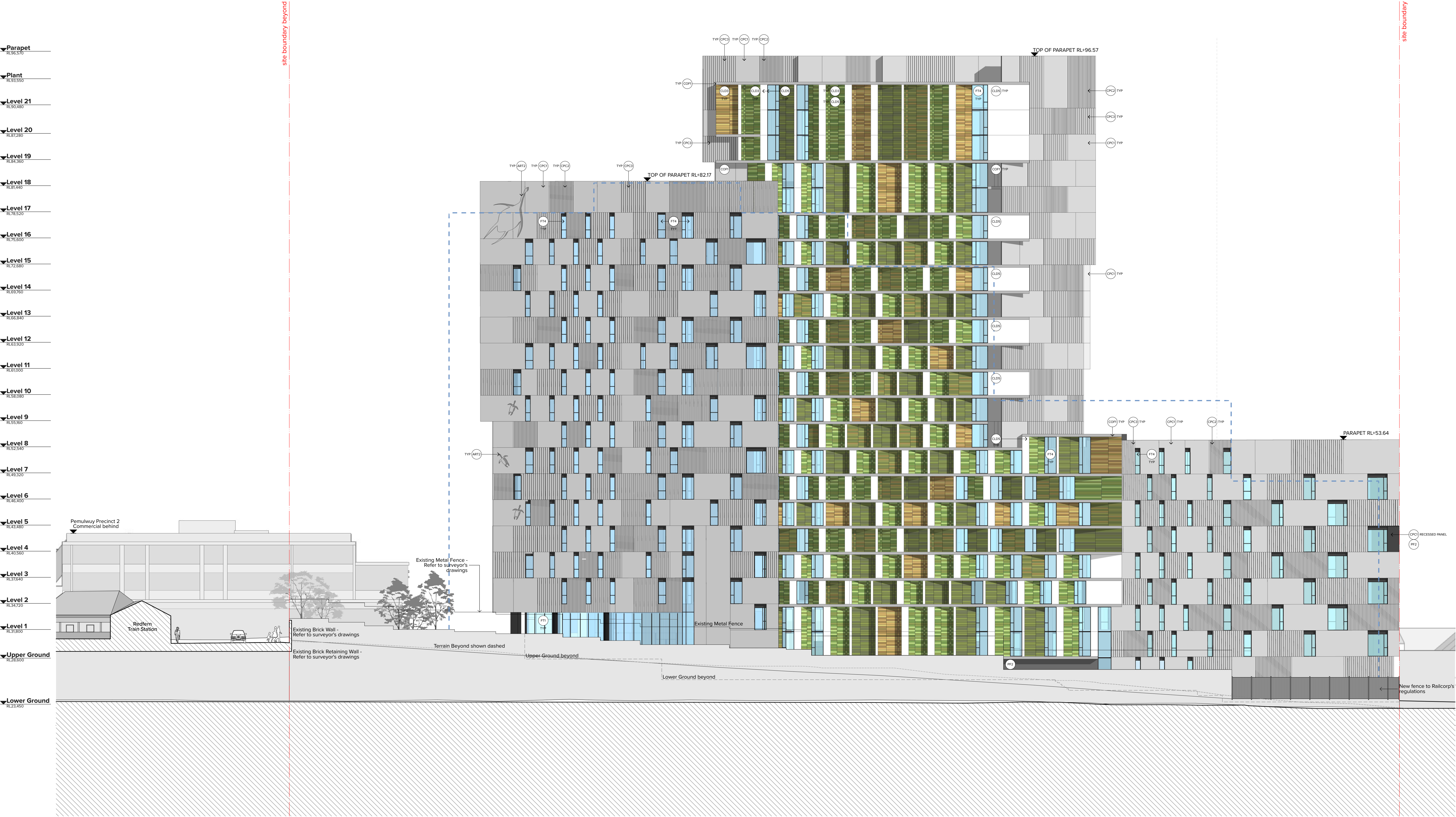
DLCS Quality Endorsed Company ISO 9001:2008, Registration Number 20476
Nominated Architect: Nicholas Turner 6695, AEN 86 054 034 911



Lawson Street West Elevation

TURNER Level 7 **ONE** Oxford Street Darlinghurst NSW 2010 T +61 2 8568 0000 F +61 2 8568 0088

TURNER Level 7 **ONE** Oxford Street Darlinghurst NSW 2010 T +61 2 8568 0000 F +61 2 8568 0088



Legend

(ART1) Art Feature, Type 1:
Painted soffit to main entry lobby.

(ART2) Art Feature, Type 2:
Embossed feature symbol into precast panel.

(ART3) Art Feature, Type 3:
Existing art wall, preserved.

(AWN) Awning, Type 1:
Folded steel awning with decorative motif laser cut into leading edge. Paint finish equal to PF3.

(BAL1) Balustrade, Type 1:
Vertical 100 x 10 steel baluster, no top rail. Balusters angled at 90°. Powder coat finish, colour and finish to match PCP1.

(BAL2) Balustrade, Type 2:
Frameless clear glass balustrade system with separate steel flat bar handrail / stanchion support behind. Colour and finish to match PCP1.

(CLD1) Cladding, Type 1:
Stone cladding system, random length stretcher bond. Finish split face and / or exfoliate finish. Coursing height varies between 75 and 150mm. Random stone selection to match Hawksbury sandstone, Port Fairy Bluestone and off white / grey speckled granite.

(CLD2) Cladding, Type 2:
Timber cladding system, vertical 'V' jointed 90mm wide. Service doors integrated to match. Timber equal to Spotted Gum in appearance. Natural colour with pigmented oil finish.

(CLD3) Cladding, Type 3:
Terracotta facade tile system, 175mm horizontal profile, colour range varies to suit facade concept and surface finish varies between glazed and natural. Facade system equal to NBS Architectural Terracotta. Colours and finishes equal to TERRAET natural and engobe colour range.

(CLD4) Cladding, Type 4:
Metal cladding system, express jointed, with concealed essential service doors and louvers. Prefinished coating system. Colour and finish to match Alpolic 'Slate Grey' [MJ254-G30].

(CLD5) Cladding, Type 5:
Metal cladding system, express jointed. Prefinished coating system. Colour and finish to match Alpolic 'Milk White' [M7774-G30].

(CLD6) Cladding, Type 6:
Metal cladding system, express jointed. Prefinished coating system. Colour and finish to match Alpolic 'Charcoal' [M7991-G30].

(COP1) Concrete, Off Form Finish, Type 1:
Natural concrete, smooth board finish. Colour natural grey concrete mix. Penetrating clear matte sealer over.

(COP2) Concrete, Off Form Finish, Type 2:
Natural concrete, textured rough sawn timber board finish. Colour natural grey concrete mix. Penetrating clear matte sealer over.

(CPC1) Concrete, Precast, Type 1:
Smooth finish concrete wall elements. Colour 'lite & brittle' concrete mix with white oxide pigment additive. Penetrating clear matte sealer over.

(CPC2) Concrete, Precast, Type 2:
Decorative finish concrete wall elements, vertical square edged profiled form liner finish, 30mm spacing, 15mm depth equal to Reckli 2/77 'Tigris' profile. Colour equal to CPC1. Penetrating clear matte sealer over.

(CPC3) Concrete, Precast, Type 3:
Decorative finish concrete wall elements, vertical radius profiled form liner finish, 30mm spacing, 32mm diam., 53mm depth equal to Reckli 2/94 'Orinoco' profile. Colour equal to CPC1. Penetrating clear matte sealer over.

(DP1) Decorative Pattern, Type 1:
Custom decorative pattern integrated to finished glass surface to enhance privacy.

(FT1) Facade Glazing System, Type 1: *Street Level Entry Foyer & Associated Spaces*
Glass, clear. Framing system, front faced glazing system with decorative 300mm projecting vertical mullions. Aluminium, powder coat finish. Structural steel supports fully concealed. Colour and finish to match PCP1. Refer to Section J assessment for performance requirements. Reflectivity to be less than 20%.

(FT2) Facade Glazing System, Type 2: *Decorative Bay Window Elements*
Glass, clear. Front faced glazing system with shadow box glazing detail to conceal spandrel and slab edge elements. Aluminium, powder coat finish. Colour and finish to match PCP1. Refer to Section J assessment for performance requirements. Reflectivity to be less than 20%.

(FT3) Facade Glazing System, Type 3: *Window Wall Elements*
Glass, grey body tint. Front faced glazing system with shadow box glazing detail to conceal spandrel and slab edge elements. Aluminium, powder coat finish. Colour and finish to match PCP1. Refer to Section J assessment for performance requirements. Reflectivity to be less than 20%.

(FT4) Facade Glazing System, Type 4: *Infill Windows*
Glass, clear. Framing system, aluminium, powder coat finish. Mechanical louvers integral to frame system. Matching aluminium cover plates to conceal slab edges and adjacent wall elements. Framing colour to match PCP1. Refer to Section J assessment for performance requirements. Reflectivity to be less than 20%.

(FT5) Facade Glazing System, Type 5: *Infill Windows*
Glass, grey body tint. Framing system, aluminium, powder coat finish, colour to match PCP1. Refer to Section J assessment for performance requirements. Reflectivity to be less than 20%.

(GT1) Gate, Type 1:
Decorative timber and steel entry gate. Timber equal to CLD2 material and finish. Steel, paint finish, equal to PF3.

(HR1) Handrail, Type 1:
Decorative handrail to street level interface. 32mm diam. steel, bronze finish.

(LV1) Louvre Roof, Type 1:
Fixed horizontal elliptical aluminium louvre system, 250mm profile. Angle set to shield view of plant from upper levels. Powder coat finish, colour and finish to match PCP1.

(MDR) Metal Deck Roofing, Type 1:
Standing seam profiled roofing system to match Lysaght 'Longline 305' profile. Colour to match Colorbond 'Monument'.

(PCP1) Powdercoat Finish, Type 1:
Colour and finish to match Dulux - Fluorocel 'Xtreme Charcoal' satin [9647297M].

(PF1) Paint Finish, Type 1:
Pigment stain paint system, equal to Keim Concretal Lasur System.Pigment. 30% concentration / opacity. Colour 'White / Weiss' [9872].

(PF2) Paint Finish, Type 2:
Pigment stain paint system, equal to Keim Concretal Lasur System.Pigment. 70% concentration / opacity. Colour 'Black / Schwartz' [9008].

(PF3) Paint Finish, Type 3:
Colour and finish to match Dulux - Micaceous Iron Oxide 'Mid Grey'.

(PVI) Paving, Type 1:
Natural stone paving to external steps, landings and foyer areas. Refer to Landscape documentation for further information.

(SCI) Screen, Type 1:
Fixed vertical elliptical aluminium louvre system, 250mm profile. Powder coat finish, colour and finish to match PCP1.

(SG1) Signage, Type 1:
Integral building identification signage, surface fixed onto building facade. Bronze finish. Size and extent as per elevation drawings.

(VH1) Ventilation Hatch, Type 1:
Aluminium ventilation hatch integrated with glazing. Aluminium, powder coat finish. Colour and finish to match PCP1.

Note Refer to Landscape documentation for public domain and landscape areas for further information regarding materials and finishes selection.

CLIENT

Aboriginal Housing Company
83-123 Eveleigh Street Redfern NSW 2016 Australia

Rev	Date	Approved by	Revision Notes
N	29/05/17	DS	Issue for Consultant Coordination
P	02/06/17	DS	Issue for DA Submission - Client Approval
R	07/06/17	DS	Issue for DA Submission - DRP
S	09/06/17	DS	Issue for DA Submission - DoP

Project Title
Col James - Student Accommodation
83-123 Eveleigh Street Redfern NSW 2016 Australia

Drawing Title
GA Elevations
Railway Line_South Elevation

Scale
1:200 @A1, 50% @ A3

Project No.
16107

Dwg No.
DA-250-030

Development Application

Drawn by
CB

Rev
S

North

NOTES

THIS DRAWING IS COPYRIGHT © OF TURNER. NO REPRODUCTION WITHOUT PERMISSION. UNLESS NOTED OTHERWISE THIS DRAWING IS NOT FOR CONSTRUCTION. ALL DIMENSIONS AND LEVELS ARE TO BE CHECKED ON SITE PRIOR TO THE COMMENCEMENT OF WORK. BEFORE TURNER IF ANY DISCREPANCIES FOR CLARIFICATION BEFORE PROCEEDING WITH WORK. DRAWINGS ARE NOT TO BE SCALED. USE ONLY FOURIGED DIMENSIONS. REFER TO CONSULTANT DOCUMENTATION FOR FURTHER INFORMATION.

DLCS Quality Endorsed Company ISO 9001:2008, Registration Number 20476
Notified Architect Nicholas Turner 6085, APR 98 594 094 871

TURNER

Level 7 ONE Oxford Street
Durrington NSW 2010
AUSTRALIA

T +61 2 8668 0000
F +61 2 8668 0088
turnerstudio.com.au



- Legend**
- Art Feature, Type 1: Painted soffit to main entry lobby.
 - Art Feature, Type 2: Embossed feature symbol into precast panel.
 - Art Feature, Type 3: Existing art wall, preserved.
 - Art Feature, Type 1: Folded steel awning with decorative motif laser cut into leading edge. Paint finish equal to PF3.
 - Balustrade, Type 1: Vertical 100 x 10 steel baluster, no top rail. Balusters angled at 90°. Powder coat finish, colour and finish to match PCP1.
 - Balustrade, Type 2: Frameless clear glass balustrade system with separate steel flat bar handrail / stanchion support behind. Colour and finish to match PCP1.
 - Cladding, Type 1: Stone cladding system, random length stretcher bond. Finish split face and / or exfoliate finish. Coursing height varies between 75 and 150mm. Random stone selection to match Hawksbury sandstone, Port Fairy Bluestone and off white / grey speckled granite.
 - Cladding, Type 2: Timber cladding system, vertical 'V' jointed 90mm wide. Service doors integrated to match. Timber equal to Spotted Gum in appearance. Natural colour with pigmented oil finish.
 - Cladding, Type 3: Terracotta facade tile system, 125mm horizontal profile, colour range varies to suit facade concept and surface finish varies between glazed and natural. Facade system equal to NBS Architectural Terracotta. Colours and finishes equal to TERRAART natural and engobe colour range.
 - Cladding, Type 4: Metal cladding system, express jointed, with concealed essential service doors and louvers. Prefinished coating system. Colour and finish to match Alpolic 'Slate Grey' [MJ254-G30].
 - Cladding, Type 5: Metal cladding system, express jointed. Prefinished coating system. Colour and finish to match Alpolic 'Milk White' [M7774-G30].
 - Cladding, Type 6: Metal cladding system, express jointed. Prefinished coating system. Colour and finish to match Alpolic 'Charcoal' [M7991-G30].
 - Concrete, Off Form Finish, Type 1: Natural concrete, smooth board finish. Colour natural grey concrete mix. Penetrating clear matte sealer over.
 - Concrete, Off Form Finish, Type 2: Natural concrete, textured rough sawn timber board finish. Colour natural grey concrete mix. Penetrating clear matte sealer over.
 - Concrete, Precast, Type 1: Smooth finish concrete wall elements. Colour 'lite & brittle' concrete mix with white oxide pigment additive. Penetrating clear matte sealer over.
 - Concrete, Precast, Type 2: Decorative finish concrete wall elements, vertical square edged profiled form liner finish, 30mm spacing, 15mm depth equal to Reckli 2/77. Tigris' profile. Colour equal to CPC1. Penetrating clear matte sealer over.
 - Concrete, Precast, Type 3: Decorative finish concrete wall elements, vertical radius profiled form liner finish, 30mm spacing, 32mm diam. 53mm depth equal to Reckli 2/94 'Orinoco' profile. Colour equal to CPC1. Penetrating clear matte sealer over.
 - Decorative Pattern, Type 1: Custom decorative pattern integrated to finished glass surface to enhance privacy.
 - Facade Glazing System, Type 1: Street Level Entry Foyer & Associated Spaces. Glass, clear. Framing system, aluminium, powder coat finish. Mechanical louvers integral to frame system. Matching aluminium cover plates to conceal slab edges and adjacent wall elements. Framing colour to match PCP1. Refer to Section J assessment for performance requirements. Reflectivity to be less than 20%.
 - Facade Glazing System, Type 2: Decorative Bay Window Elements. Glass, clear. Front faced glazing system with shadow box glazing detail to conceal spandrel and slab edge elements. Aluminium, powder coat finish. Colour and finish to match PCP1. Refer to Section J assessment for performance requirements. Reflectivity to be less than 20%.
 - Facade Glazing System, Type 3: Window Wall Elements. Glass, grey body tint. Framing system, aluminium, powder coat finish. Colour and finish to match PCP1. Refer to Section J assessment for performance requirements. Reflectivity to be less than 20%.
 - Facade Glazing System, Type 4: Infill Windows. Glass, clear. Framing system, aluminium, powder coat finish. Mechanical louvers integral to frame system. Matching aluminium cover plates to conceal slab edges and adjacent wall elements. Framing colour to match PCP1. Refer to Section J assessment for performance requirements. Reflectivity to be less than 20%.
 - Facade Glazing System, Type 5: Infill Windows. Glass, grey body tint. Framing system, aluminium, with decorative 150mm projecting vertical fins and aluminium slab extension. Powder coat finish, colour to match PCP1. Refer to Section J assessment for performance requirements. Reflectivity to be less than 20%.
 - Gate, Type 1: Decorative timber and steel entry gate. Timber equal to CLD2 material and finish. Steel, paint finish, equal to PF3.
 - Handrail, Type 1: Decorative handrail to street level interface. 32mm diam. steel, bronze finish.
 - Louvre Roof, Type 1: Fixed horizontal elliptical aluminium louvre system, 250mm profile. Angle set to shield view of plant from upper levels. Powder coat finish, colour and finish to match PCP1.
 - Metal Deck Roofing, Type 1: Standing seam profiled roofing system to match Lysaght 'Longline 305' profile. Colour to match Colorbond 'Monument'.
 - Powdercoat Finish, Type 1: Colour and finish to match Dulux - Fluorocel 'Xtreme Charcoal' satin [9647297M].
 - Paint Finish, Type 1: Pigment stain paint system, equal to Keim Concretal Lasur System. Pigment. 30% concentration / opacity. Colour 'White / Weiss' [9872].
 - Paint Finish, Type 2: Pigment stain paint system, equal to Keim Concretal Lasur System. Pigment. 70% concentration / opacity. Colour 'Black / Schwartz' [9008].
 - Paint Finish, Type 3: Colour and finish to match Dulux - Micaceous Iron Oxide 'Mid Grey'.
 - Paving, Type 1: Natural stone paving to external steps, landings and foyer areas. Refer to Landscape documentation for further information.
 - Screen, Type 1: Fixed vertical elliptical aluminium louvre system, 250mm profile. Powder coat finish, colour and finish to match PCP1.
 - Signage, Type 1: Integral building identification signage, surface fixed onto building facade. Bronze finish. Size and extent as per elevation drawings.
 - Ventilation Hatch, Type 1: Aluminium ventilation hatch integrated with glazing. Aluminium, powder coat finish. Colour and finish to match PCP1.
- Note Refer to Landscape documentation for public domain and landscape areas for further information regarding materials and finishes selection.

NOTES

THIS DRAWING IS COPYRIGHT © OF TURNER. NO REPRODUCTION WITHOUT PERMISSION. UNLESS NOTED OTHERWISE THIS DRAWING IS NOT FOR CONSTRUCTION. ALL DIMENSIONS AND LEVELS ARE TO BE CHECKED ON SITE PRIOR TO THE COMMENCEMENT OF WORK. INFORM TURNER OF ANY DISCREPANCIES FOR CLARIFICATION BEFORE PROCEEDING WITH WORK. DRAWINGS ARE NOT TO BE SCALED. USE ONLY FOURIGED DIMENSIONS. REFER TO CONSULTANT DOCUMENTATION FOR FURTHER INFORMATION.

CLIENT

Aboriginal Housing Company

83-123 Eveleigh Street Redfern NSW 2016 Australia

Rev	Date	Approved by	Revision Notes
N	29/05/17	DS	Issue for Consultant Coordination
P	02/06/17	DS	Issue for DA Submission - Client Approval
R	07/06/17	DS	Issue for DA Submission - DRP
S	09/06/17	DS	Issue for DA Submission - DoP

Project Title

Col James - Student Accommodation

83-123 Eveleigh Street Redfern NSW 2016 Australia

Drawing Title

GA Elevations

Terraces_East Elevation

Scale	Project No.	Drawn by	North
1:200 @A1, 50% @ A3	16107	CB	
Status	Dwg No.	Rev	
Development Application	DA-250-040	S	

TURNER

Level 7 ONE Oxford Street
Durrington NSW 2010
AUSTRALIA

T +61 2 8568 0000
F +61 2 8568 0088
turnerstudio.com.au