



COF1

MDR1

PF1

BAL1

PF2

FT4

CLD4

FT2

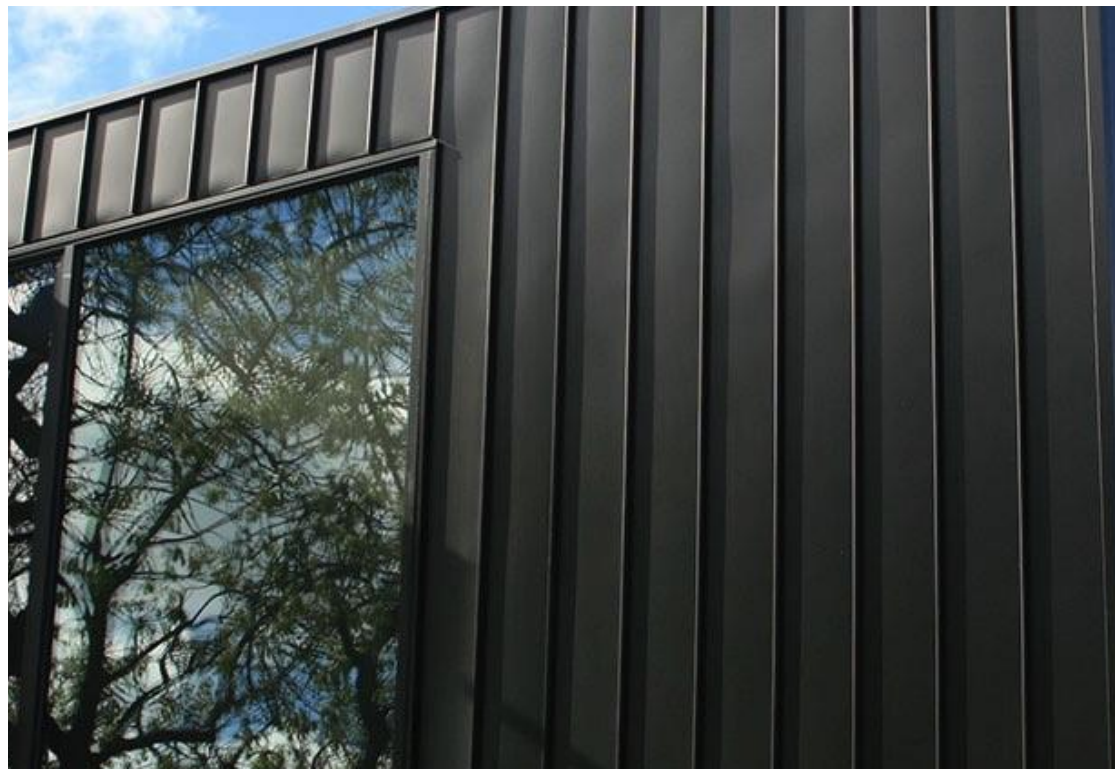
COF1

PF3

PF1



FT2



MDR1



BAL1



PF1

Legend

- ART1 Art Feature, Type 1:
Painted soffit to main entry lobby.
- ART2 Art Feature, Type 2:
Embossed feature symbol into precast panel.
- ART3 Art Feature, Type 3:
Existing art wall, preserved.
- AWN1 Awning, Type 1:
Folded steel awning with decorative motif laser cut into leading edge. Paint finish equal to PF3.
- BAL1 Balustrade, Type 1:
Vertical 100 x 10 steel baluster, no top rail. Balusters angled at 90°. Powder coat finish, colour and finish to match PCF1.
- BAL2 Balustrade, Type 2:
Frameless clear glass balustrade system with separate steel flat bar handrail / stanchion support behind. Colour and finish to match PCF1.

- CLD1 Cladding, Type 1:
Stone cladding system, random length stretcher bond. Finish split face and / or exfoliate finish. Coursing height varies between 75 and 150mm. Random stone selection to match Hawksbury sandstone, Port Fairy Bluestone and off white / grey speckled granite.
- CLD2 Cladding, Type 2:
Timber cladding system, vertical V jointed 90mm wide. Service doors integrated to match. Timber equal to Spotted Gum in appearance. Natural colour with pigmented oil finish.
- CLD3 Cladding, Type 3:
Terracotta facade tile system, 125mm horizontal profile, colour range varies to suit facade concept and surface finish varies between glazed and natural. Facade system equal to NBR Architectural Terracotta. Colours and finishes equal to TERRART natural and engobe colour range.
- CLD4 Cladding, Type 4:
Metal cladding system, express jointed, with concealed essential service doors and louvers. Prefinished coating system. Colour and finish to match Alpolic 'Slate Grey' [MJ254-G30].

- CLD5 Cladding, Type 5:
Metal cladding system, express jointed. Prefinished coating system. Colour and finish to match Alpolic 'Milk White' [M7774-G30].
- CLD6 Cladding, Type 6:
Metal cladding system, express jointed. Prefinished coating system. Colour and finish to match Alpolic 'Charcoal' [M7991-G30].
- COP1 Concrete, Off Form Finish, Type 1:
Natural concrete, smooth board finish. Colour natural grey concrete mix. Penetrating clear matte sealer over.
- COP2 Concrete, Off Form Finish, Type 2:
Natural concrete, textured rough sawn timber board finish. Colour natural grey concrete mix. Penetrating clear matte sealer over.

- CPC1 Concrete, Precast, Type 1:
Smooth finish concrete wall elements. Colour 'lite & bribe' concrete mix with white oxide pigment additive. Penetrating clear matte sealer over.
- CPC2 Concrete, Precast, Type 2:
Decorative finish concrete wall elements, vertical square edged profiled form liner finish, 30mm spacing, 15mm depth equal to Reckit 2/77 'Tigris' profile. Colour equal to CPC1. Penetrating clear matte sealer over.
- CPC3 Concrete, Precast, Type 3:
Decorative finish concrete wall elements, vertical radius profiled form liner finish, 30mm spacing, 32mm diam., 53mm depth equal to Reckit 2/94 'Orinoco' profile. Colour equal to CPC1. Penetrating clear matte sealer over.
- DP1 Decorative Pattern, Type 1:
Custom decorative pattern integrated to finished glass surface to enhance privacy.

- FT1 Facade Glazing System, Type 1: **Street Level Entry Foyer & Associated Spaces**
Glass, clear. Framing system, front faced glazing system with decorative 300mm projecting vertical mullions. Aluminium, powder coat finish. Structural steel supports fully concealed. Colour and finish to match PCF1. Refer to Section J assessment for performance requirements. Reflectivity to be less than 20%.
- FT2 Facade Glazing System, Type 2: **Decorative Bay Window Elements**
Glass, clear. Front faced glazing system with shadow box glazing detail to conceal spandrel and slab edge elements. Aluminium, powder coat finish. Colour and finish to match PCF1. Refer to Section J assessment for performance requirements. Reflectivity to be less than 20%.
- FT3 Facade Glazing System, Type 3: **Window Wall Elements**
Glass, grey body tint. Framing system, aluminium, powder coat finish. Colour and finish to match PCF1. Refer to Section J assessment for performance requirements. Reflectivity to be less than 20%.

- FT4 Facade Glazing System, Type 4: **Infill Windows**
Glass, clear. Framing system, aluminium, powder coat finish. Mechanical louvers integral to frame system. Matching aluminium cover plates to conceal slab edges and adjacent wall elements. Framing colour to match PCF1. Refer to Section J assessment for performance requirements. Reflectivity to be less than 20%.
- FT5 Facade Glazing System, Type 5: **Infill Windows**
Glass, grey body tint. Framing system, aluminium, with decorative 150mm projecting vertical fins and aluminium slab extension. Powder coat finish, colour to match PCF1. Refer to Section J assessment for performance requirements. Reflectivity to be less than 20%.
- GT1 Gate, Type 1:
Decorative timber and steel entry gate. Timber equal to CLD2 material and finish. Steel, paint finish, equal to PF3.
- HR1 Handrail, Type 1:
Decorative handrail to street level interface. 32mm diam. steel, bronze finish.

- LV1 Louvre Roof, Type 1:
Fixed horizontal elliptical aluminium louvre system, 250mm profile. Angle set to shield view of plant from upper levels. Powder coat finish, colour and finish to match PCF1.
- MDR1 Metal Deck Roofing, Type 1:
Standing seam profiled roofing system to match Lysaght 'Longline 305' profile. Colour to match Colorbond 'Monument'.
- PCF1 Powdercoat Finish, Type 1:
Colour and finish to match Dulux - Fluorocel 'Xtreme Charcoal' satin [9647297M].
- PF1 Paint Finish, Type 1:
Pigment stain paint system, equal to Keim Concretal Lasur System.Pigment. 30% concentration / opacity. Colour 'White / Weiss' [9872].
- PF2 Paint Finish, Type 2:
Pigment stain paint system, equal to Keim Concretal Lasur System.Pigment. 70% concentration / opacity. Colour 'Black / Schwartz' [9008].

- PF3 Paint Finish, Type 3:
Colour and finish to match Dulux - Micaceous Iron Oxide 'Mid Grey'.
- PV1 Paving, Type 1:
Natural stone paving to external steps, landings and foyer areas. Refer to Landscape documentation for further information.
- SCI Screen, Type 1:
Fixed vertical elliptical aluminium louvre system, 250mm profile. Powder coat finish, colour and finish to match PCF1.
- SIG1 Signage, Type 1:
Integral building identification signage, surface fixed onto building facade. Bronze finish. Size and extent as per elevation drawings.
- VH1 Ventilation Hatch, Type 1:
Aluminium ventilation hatch integrated with glazing. Aluminium, powder coat finish. Colour and finish to match PCF1.
- Note Refer to Landscape documentation for public domain and landscape areas for further information regarding materials and finishes selection.

NOTES

THIS DRAWING IS COPYRIGHT © OF TURNER. NO REPRODUCTION WITHOUT PERMISSION. UNLESS NOTED OTHERWISE THIS DRAWING IS NOT FOR CONSTRUCTION. ALL DIMENSIONS AND LEVELS ARE TO BE CHECKED ON SITE PRIOR TO THE COMMENCEMENT OF WORK. INFORM TURNER OF ANY DISCREPANCIES FOR CLARIFICATION BEFORE PROCEEDING WITH WORK. DRAWINGS ARE NOT TO BE SCALED. USE ONLY FIGURED DIMENSIONS. REFER TO CONSULTANT DOCUMENTATION FOR FURTHER INFORMATION.

DLCS Quality Endorsed Company ISO 9001:2015, Registration Number 23476
Notified Architect Nicholas Turner 6885, APN 99 394 394 871

CLIENT

Aboriginal Housing Company
83-123 Eveleigh Street Redfern NSW 2016 Australia

Rev	Date	Approved by	Revision Notes
N	29/05/17	DS	Issue for Consultant Coordination
P	02/06/17	DS	Issue for DA Submission - Client Approval
R	07/06/17	DS	Issue for DA Submission - DRP
S	09/06/17	DS	Issue for DA Submission - DoP

Project Title
Col James - Student Accommodation
83-123 Eveleigh Street Redfern NSW 2016 Australia

Drawing Title
Materials and Finishes
Eveleigh Street - North

Scale	Project No.	Drawn by	North
NTS	16107	CB	
Status	Dwg No.	Rev	
Development Application	DA-950-001	S	

TURNER

Level 7 ONE Oxford Street
Durlinghurst NSW 2010
AUSTRALIA
T +61 2 8668 0000
F +61 2 8668 0088
turnerstudio.com.au



COF1

FT2

FT4

BAL1

PF2

VH1

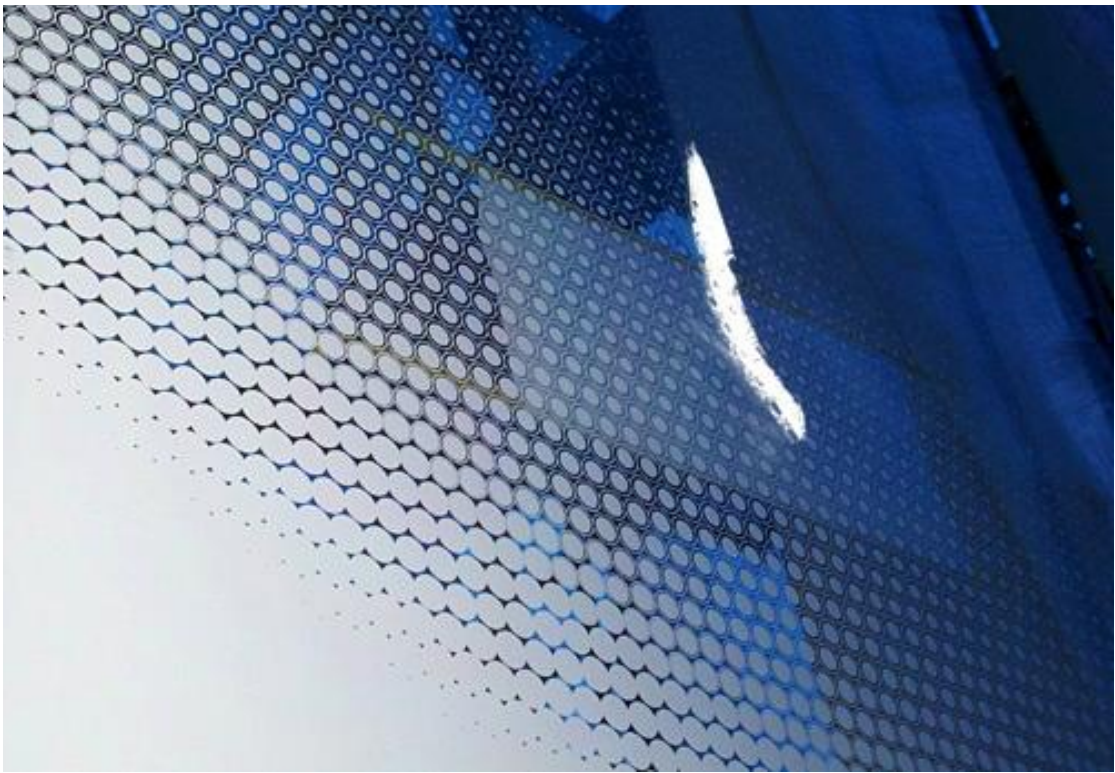
PF1

PF2

FT1 + DP1

CLD2

PF3



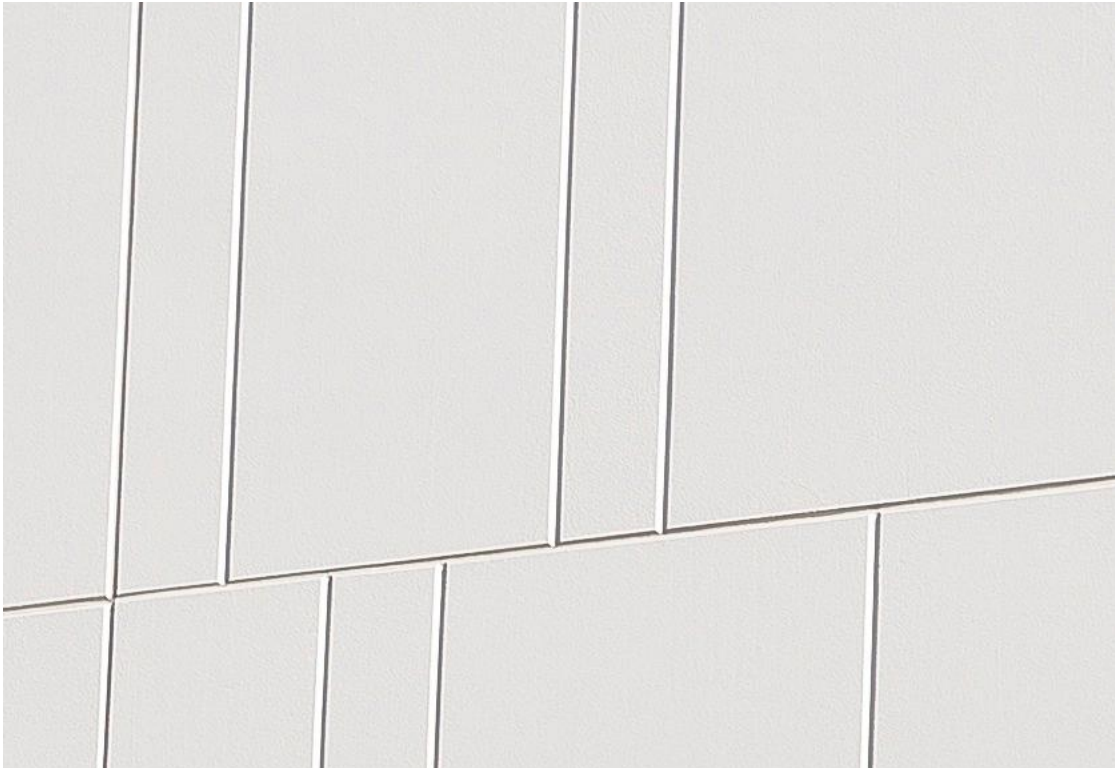
DP1



CLD2



BAL1



PF1

Legend

- ART1 Art Feature, Type 1: Painted soffit to main entry lobby.
- ART2 Art Feature, Type 2: Embossed feature symbol into precast panel.
- ART3 Art Feature, Type 3: Existing art wall, preserved.
- AWN1 Awning, Type 1: Folded steel awning with decorative motif laser cut into leading edge. Paint finish equal to PF3.
- BAL1 Balustrade, Type 1: Vertical 100 x 10 steel baluster, no top rail. Balusters angled at 90°. Powder coat finish, colour and finish to match PCF1.
- BAL2 Balustrade, Type 2: Frameless clear glass balustrade system with separate steel flat bar handrail / stanchion support behind. Colour and finish to match PCF1.
- CLD1 Cladding, Type 1: Stone cladding system, random length stretcher bond. Finish split face and / or exfoliate finish. Coursing height varies between 75 and 150mm. Random stone selection to match Hawksbury sandstone, Port Fairy Bluestone and off white / grey speckled granite.
- CLD2 Cladding, Type 2: Timber cladding system, vertical 'V' jointed 90mm wide. Service doors integrated to match. Timber equal to Spotted Gum in appearance. Natural colour with pigmented oil finish.
- CLD3 Cladding, Type 3: Terracotta facade tile system, 125mm horizontal profile, colour range varies to suit facade concept and surface finish varies between glazed and natural. Facade system equal to NBR Architectural Terracotta. Colours and finishes equal to TERRAART natural and engobe colour range.
- CLD4 Cladding, Type 4: Metal cladding system, express jointed, with concealed essential service doors and louvers. Prefinished coating system. Colour and finish to match Alpolic 'Slate Grey' [MJ254-G30].
- CLD5 Cladding, Type 5: Metal cladding system, express jointed. Prefinished coating system. Colour and finish to match Alpolic 'Milk White' [M7774-G30].
- CLD6 Cladding, Type 6: Metal cladding system, express jointed. Prefinished coating system. Colour and finish to match Alpolic 'Charcoal' [MJ7991-G30].
- CON1 Concrete, Off Form Finish, Type 1: Natural concrete, smooth board finish. Colour natural grey concrete mix. Penetrating clear matte sealer over.
- CON2 Concrete, Off Form Finish, Type 2: Natural concrete, textured rough sawn timber board finish. Colour natural grey concrete mix. Penetrating clear matte sealer over.
- CPC1 Concrete, Precast, Type 1: Smooth finish concrete wall elements. Colour 'lite & brittle' concrete mix with white oxide pigment additive. Penetrating clear matte sealer over.
- CPC2 Concrete, Precast, Type 2: Decorative finish concrete wall elements, vertical square edged profiled form liner finish, 30mm spacing, 15mm depth equal to Reckit 2/77 'Tigris' profile. Colour equal to CPC1. Penetrating clear matte sealer over.
- CPC3 Concrete, Precast, Type 3: Decorative finish concrete wall elements, vertical radius profiled form liner finish, 30mm spacing, 32mm diam., 53mm depth equal to Reckit 2/94 'Orinoco' profile. Colour equal to CPC1. Penetrating clear matte sealer over.
- DP1 Decorative Pattern, Type 1: Custom decorative pattern integrated to finished glass surface to enhance privacy.

- FT1 Facade Glazing System, Type 1: Street Level Entry Foyer & Associated Spaces. Glass, clear. Framing system, aluminium, powder coat finish. Mechanical louvers integral to frame system. Matching aluminium cover plates to conceal slab edges and adjacent wall elements. Framing colour to match PCF1. Refer to Section J assessment for performance requirements. Reflectivity to be less than 20%.
- FT2 Facade Glazing System, Type 2: Decorative Bay Window Elements. Glass, clear. Front faced glazing system with shadow box glazing detail to conceal spandrel and slab edge elements. Aluminium, powder coat finish. Colour and finish to match PCF1. Refer to Section J assessment for performance requirements. Reflectivity to be less than 20%.
- FT3 Facade Glazing System, Type 3: Window Wall Elements. Glass, grey body tint. Front faced glazing system with shadow box glazing detail to conceal spandrel and slab edge elements. Aluminium, powder coat finish. Colour and finish to match PCF1. Refer to Section J assessment for performance requirements. Reflectivity to be less than 20%.
- FT4 Facade Glazing System, Type 4: Infill Windows. Glass, clear. Framing system, aluminium, powder coat finish. Mechanical louvers integral to frame system. Matching aluminium cover plates to conceal slab edges and adjacent wall elements. Framing colour to match PCF1. Refer to Section J assessment for performance requirements. Reflectivity to be less than 20%.
- FT5 Facade Glazing System, Type 5: Infill Windows. Glass, grey body tint. Framing system, aluminium, with decorative 150mm projecting vertical fins and aluminium slab extension. Powder coat finish, colour to match PCF1. Refer to Section J assessment for performance requirements. Reflectivity to be less than 20%.
- GT1 Gate, Type 1: Decorative timber and steel entry gate. Timber equal to CLD2 material and finish. Steel, paint finish, equal to PF3.
- HR1 Handrail, Type 1: Decorative handrail to street level interface. 32mm diam. steel, bronze finish.
- Louvre Roof, Type 1: Fixed horizontal elliptical aluminium louvre system, 250mm profile. Angle set to shield view of plant from upper levels. Powder coat finish, colour and finish to match PCF1.
- Metal Deck Roofing, Type 1: Standing seam profiled roofing system to match Lysaght 'Longline 305' profile. Colour to match Colorbond 'Monument'.
- Powdercoat Finish, Type 1: Powdercoat finish, equal to Keim Concretal Lasur System. Pigment. 30% concentration / opacity. Colour 'White / Weiss' [9872].
- Paint Finish, Type 1: Paint finish, equal to Keim Concretal Lasur System. Pigment. 30% concentration / opacity. Colour 'Black / Schwarz' [9008].
- Paint Finish, Type 2: Paint finish, equal to Keim Concretal Lasur System. Pigment. 70% concentration / opacity. Colour 'Black / Schwarz' [9008].
- Paint Finish, Type 3: Paint finish, equal to Keim Concretal Lasur System. Pigment. 70% concentration / opacity. Colour 'Black / Schwarz' [9008].
- Paving, Type 1: Natural stone paving to external steps, landings and foyer areas. Refer to Landscape documentation for further information.
- Screen, Type 1: Fixed vertical elliptical aluminium louvre system, 250mm profile. Powder coat finish, colour and finish to match PCF1.
- Signage, Type 1: Integral building identification signage, surface fixed onto building facade. Bronze finish. Size and extent as per elevation drawings.
- Ventilation Hatch, Type 1: Aluminium ventilation hatch integrated with glazing. Aluminium, powder coat finish. Colour and finish to match PCF1.

- Note Refer to Landscape documentation for public domain and landscape areas for further information regarding materials and finishes selection.

NOTES

THIS DRAWING IS COPYRIGHT © OF TURNER. NO REPRODUCTION WITHOUT PERMISSION. UNLESS NOTED OTHERWISE, THIS DRAWING IS NOT FOR CONSTRUCTION. ALL DIMENSIONS AND LEVELS ARE TO BE CHECKED ON SITE PRIOR TO THE COMMENCEMENT OF WORK. REPORT TURNER OF ANY DISCREPANCIES FOR CLARIFICATION BEFORE PROCEEDING WITH WORK. DRAWINGS ARE NOT TO BE SCALED. USE ONLY FIGURED DIMENSIONS. REFER TO CONSULTANT DOCUMENTATION FOR FURTHER INFORMATION.

CLIENT

Aboriginal Housing Company
83-123 Eveleigh Street Redfern NSW 2016 Australia

Rev	Date	Approved by	Revision Notes
N	29/05/17	DS	Issue for Consultant Coordination
P	02/06/17	DS	Issue for DA Submission - Client Approval
R	07/06/17	DS	Issue for DA Submission - DRP
S	09/06/17	DS	Issue for DA Submission - DoP

Project Title
Col James - Student Accommodation
83-123 Eveleigh Street Redfern NSW 2016 Australia

Drawing Title
Materials and Finishes
Eveleigh Street - Courtyard Entry

Scale	Project No.	Drawn by	North
N.T.S.	16107	CB	
Status	Dwg No.	Rev	
Development Application	DA-950-002	S	

TURNER

Level 7 ONE Oxford Street
Durlinghurst NSW 2010
AUSTRALIA

T +61 2 8668 0000
F +61 2 8668 0088
turnerstudio.com.au



CLD3

COF1

FT4

CLD6

FT2

BAL1

PF2

VH1

PF1

CLD1

COF1

COF2

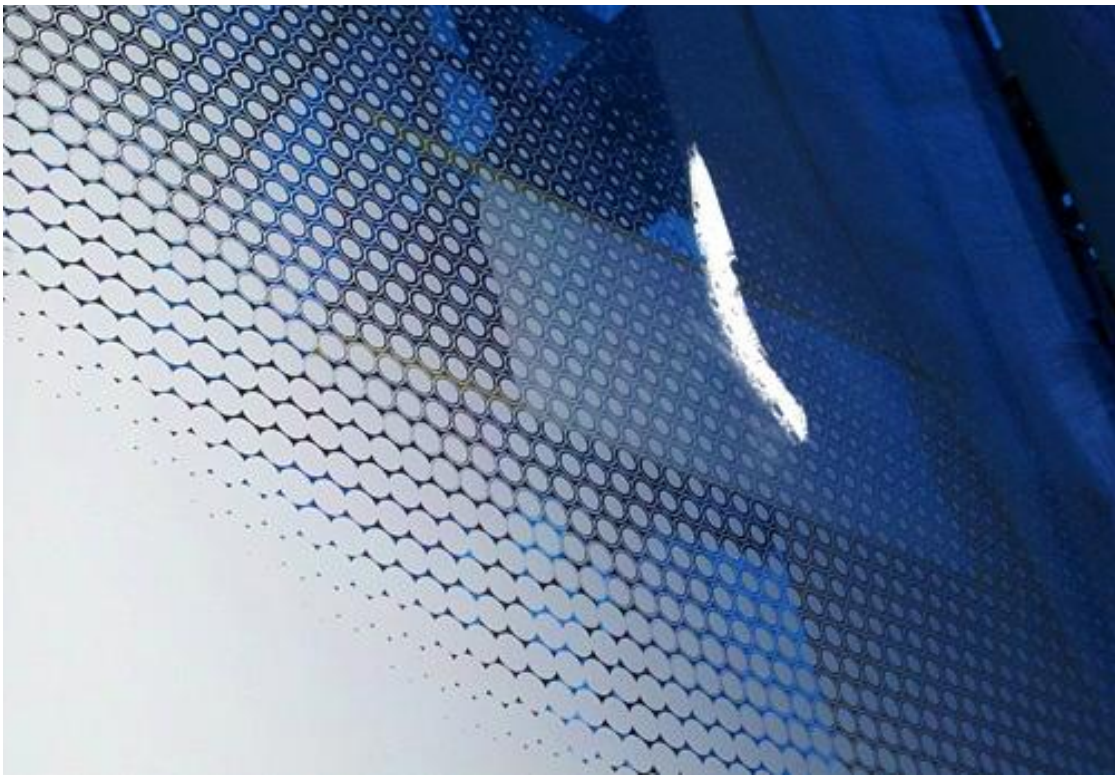
FT1 + DP1



CLD6



COF2



DP1



CLD1

Legend

- (ART1) Art Feature, Type 1: Painted soffit to main entry lobby.
- (ART2) Art Feature, Type 2: Embossed feature symbol into precast panel.
- (ART3) Art Feature, Type 3: Existing art wall, preserved.
- (AWN) Awning, Type 1: Folded steel awning with decorative motif laser cut into leading edge. Paint finish equal to PF3.
- (BAL1) Balustrade, Type 1: Vertical 100 x 10 steel baluster, no top rail. Balusters angled at 90°. Powder coat finish, colour and finish to match PCP1.
- (BAL2) Balustrade, Type 2: Frameless clear glass balustrade system with separate steel flat bar handrail / stanchion support behind. Colour and finish to match PCP1.

- (CLD1) Cladding, Type 1: Stone cladding system, random length stretcher bond. Finish split face and / or exfoliate finish. Coursing height varies between 75 and 150mm. Random stone selection to match Hawksbury sandstone, Port Fairy Bluestone and of white / grey speckled granite.
- (CLD2) Cladding, Type 2: Timber cladding system, vertical 'V' jointed 90mm wide. Service doors integrated to match. Timber equal to Spotted Gum in appearance. Natural colour with pigmented oil finish.
- (CLD3) Cladding, Type 3: Terracotta facade tile system, 125mm horizontal profile, colour range varies to suit facade concept and surface finish varies between glazed and natural. Facade system equal to NBR Architectural Terracotta. Colours and finishes equal to TERRAART natural and engobe colour range.
- (CLD4) Cladding, Type 4: Metal cladding system, express jointed, with concealed essential service doors and louvers. Prefinished coating system. Colour and finish to match Alpolic 'Slate Grey' [MJ254-G30].

- (CLD5) Cladding, Type 5: Metal cladding system, express jointed. Prefinished coating system. Colour and finish to match Alpolic 'Milk White' [M7774-G30].
- (CLD6) Cladding, Type 6: Metal cladding system, express jointed. Prefinished coating system. Colour and finish to match Alpolic 'Charcoal' [M7991-G30].
- (COP1) Concrete, Off Form Finish, Type 1: Natural concrete, smooth board finish. Colour natural grey concrete mix. Penetrating clear matte sealer over.
- (COP2) Concrete, Off Form Finish, Type 2: Natural concrete, textured rough sawn timber board finish. Colour natural grey concrete mix. Penetrating clear matte sealer over.

- (CPC1) Concrete, Precast, Type 1: Smooth finish concrete wall elements. Colour 'lite & bribe' concrete mix with white oxide pigment additive. Penetrating clear matte sealer over.
- (CPC2) Concrete, Precast, Type 2: Decorative finish concrete wall elements, vertical square edged profiled form liner finish, 30mm spacing, 15mm depth equal to Reckit 277 'Tigris' profile. Colour equal to CPC1. Penetrating clear matte sealer over.
- (CPC3) Concrete, Precast, Type 3: Decorative finish concrete wall elements, vertical radius profiled form liner finish, 30mm spacing, 32mm diam., 53mm depth equal to Reckit 2/94 'Orinoco' profile. Colour equal to CPC1. Penetrating clear matte sealer over.
- (DPR) Decorative Pattern, Type 1: Custom decorative pattern integrated to finished glass surface to enhance privacy.

- (FT1) Facade Glazing System, Type 1: Street Level Entry Foyer & Associated Spaces Glass, clear. Framing system, aluminium, powder coat finish. Mechanical louvers 300mm projecting vertical mullions. Aluminium, powder coat finish. Structural steel supports fully concealed. Colour and finish to match PCP1. Refer to Section J assessment for performance requirements. Reflectivity to be less than 20%.
- (FT2) Facade Glazing System, Type 2: Decorative Bay Window Elements Glass, clear. Front faced glazing system with shadow box glazing detail to conceal spandrel and slab edge elements. Aluminium, powder coat finish. Colour and finish to match PCP1. Refer to Section J assessment for performance requirements. Reflectivity to be less than 20%.
- (FT3) Facade Glazing System, Type 3: Window Wall Elements Glass, grey body tint. Framing system, aluminium, powder coat finish. Colour and finish to match PCP1. Refer to Section J assessment for performance requirements. Reflectivity to be less than 20%.

- (FT4) Facade Glazing System, Type 4: Infill Windows Glass, clear. Framing system, aluminium, powder coat finish. Mechanical louvers integral to frame system. Matching aluminium cover plates to conceal slab edges and adjacent wall elements. Framing colour to match PCP1. Refer to Section J assessment for performance requirements. Reflectivity to be less than 20%.
- (FT5) Facade Glazing System, Type 5: Infill Windows Glass, grey body tint. Framing system, aluminium, with decorative 150mm projecting vertical fins and aluminium slab extension. Powder coat finish, colour to match PCP1. Refer to Section J assessment for performance requirements. Reflectivity to be less than 20%.
- (GT1) Gate, Type 1: Decorative timber and steel entry gate. Timber equal to CLD2 material and finish. Steel, paint finish, equal to PF3.
- (HR) Handrail, Type 1: Decorative handrail to street level interface. 32mm diam. steel, bronze finish.

- (LV1) Louvre Roof, Type 1: Fixed horizontal elliptical aluminium louvre system, 250mm profile. Angle set to shield view of plant from upper levels. Powder coat finish, colour and finish to match PCP1.
- (MRH) Metal Deck Roofing, Type 1: Standing seam profiled roofing system to match Lysaght 'Longline 305' profile. Colour to match Colorbond 'Monument'.
- (PCP1) Powdercoat Finish, Type 1: Colour and finish to match Dulux - Fluorocel 'Xtreme Charcoal' satin [9647297M].
- (PF1) Paint Finish, Type 1: Pigment stain paint system, equal to Keim Concretal Lasur System.Pigment. 30% concentration / opacity. Colour 'White / Weiss' [9872].
- (PF2) Paint Finish, Type 2: Pigment stain paint system, equal to Keim Concretal Lasur System.Pigment. 70% concentration / opacity. Colour 'Black / Schwartz' [9008].

- (PF3) Paint Finish, Type 3: Colour and finish to match Dulux - Micaceous Iron Oxide 'Mid Grey'.
- (PVS) Paving, Type 1: Natural stone paving to external steps, landings and foyer areas. Refer to Landscape documentation for further information.
- (SC1) Screen, Type 1: Fixed vertical elliptical aluminium louvre system, 250mm profile. Powder coat finish, colour and finish to match PCP1.
- (SG1) Signage, Type 1: Integral building identification signage, surface fixed onto building facade. Bronze finish. Size and extent as per elevation drawings.
- (VH1) Ventilation Hatch, Type 1: Aluminium ventilation hatch integrated with glazing. Aluminium, powder coat finish. Colour and finish to match PCP1.

Note Refer to Landscape documentation for public domain and landscape areas for further information regarding materials and finishes selection.

NOTES

THIS DRAWING IS COPYRIGHT © OF TURNER. NO REPRODUCTION WITHOUT PERMISSION. UNLESS NOTED OTHERWISE THIS DRAWING IS NOT FOR CONSTRUCTION. ALL DIMENSIONS AND LEVELS ARE TO BE CHECKED ON SITE PRIOR TO THE COMMENCEMENT OF WORK. REPORT TURNER IF ANY DISCREPANCIES FOR CLARIFICATION BEFORE PROCEEDING WITH WORK. DRAWINGS ARE NOT TO BE SCALED. USE ONLY FIGURED DIMENSIONS. REFER TO CONSULTANT DOCUMENTATION FOR FURTHER INFORMATION.

CLIENT

Aboriginal Housing Company
83-123 Eveleigh Street Redfern NSW 2016 Australia

DLCS Quality Endorsed Company ISO 9001:2015, Registration Number 23476
Turner Studio Architecture Pty Ltd ABN 96 394 394 811

Rev	Date	Approved by	Revision Notes
N	29/05/17	DS	Issue for Consultant Coordination
P	02/06/17	DS	Issue for DA Submission - Client Approval
R	07/06/17	DS	Issue for DA Submission - DRP
S	09/06/17	DS	Issue for DA Submission - DoP

Project Title
Col James - Student Accommodation
83-123 Eveleigh Street Redfern NSW 2016 Australia

Drawing Title
Materials and Finishes
Eveleigh Street - South

Scale	Project No.	Drawn by	North
NTS	16107	CB	
Status	Dwg No.	Rev	
Development Application	DA-950-003	S	

TURNER

Level 7 ONE Oxford Street
Durlinghurst NSW 2010
AUSTRALIA

T +61 2 8668 0000
F +61 2 8668 0088
turnerstudio.com.au



CLD3

CPC1

CPC2

CPC3

FT4

FT2

AWN1

CLD6

CLD2

SG1

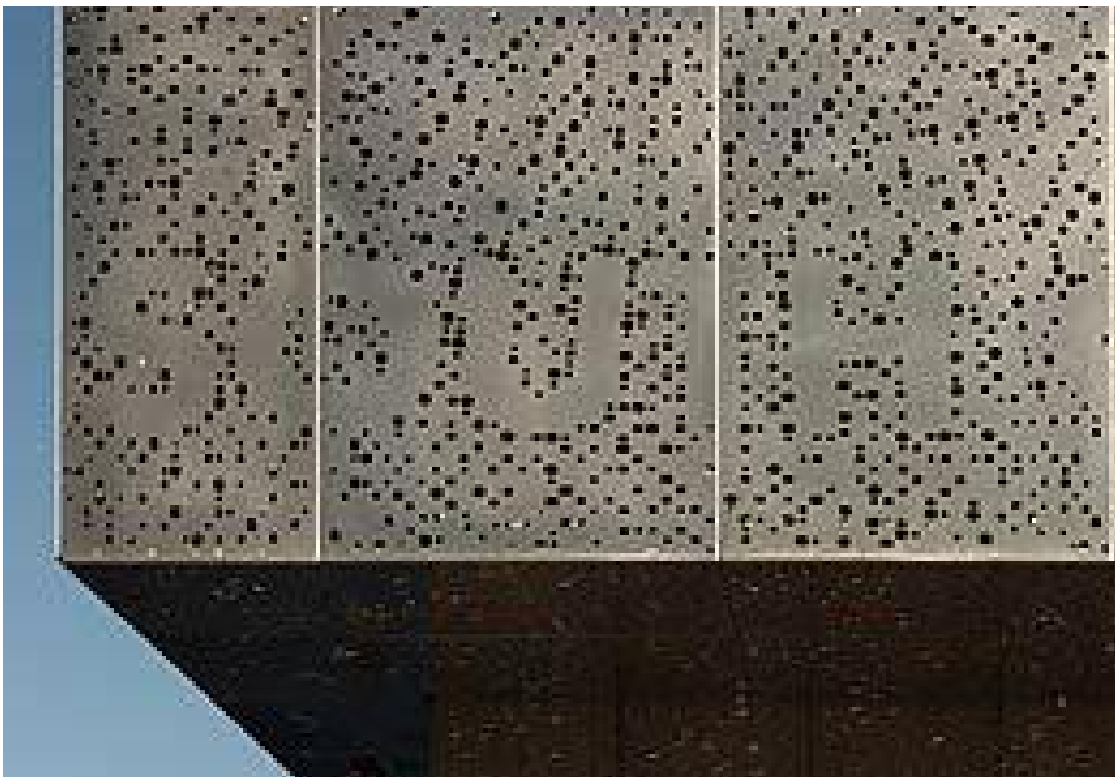
COF1

FT1

PV1



CPC2



AWN1



CLD2



PV1

Legend

- ART1 Art Feature, Type 1: Painted soffit to main entry lobby.
- ART2 Art Feature, Type 2: Embossed feature symbol into precast panel.
- ART3 Art Feature, Type 3: Existing art wall, preserved.
- AWN1 Awning, Type 1: Folded steel awning with decorative motif laser cut into leading edge. Paint finish equal to PF3.
- BAL1 Balustrade, Type 1: Vertical 100 x 10 steel baluster, no top rail. Balusters angled at 90°. Powder coat finish, colour and finish to match PCF1.
- BAL2 Balustrade, Type 2: Frameless clear glass balustrade system with separate steel flat bar handrail / stanchion support behind. Colour and finish to match PCF1.
- CLD1 Cladding, Type 1: Stone cladding system, random length stretcher bond. Finish split face and / or exfoliate finish. Coursing height varies between 75 and 150mm. Random stone selection to match Hawksbury sandstone, Port Fairy Bluestone and off white / grey speckled granite.
- CLD2 Cladding, Type 2: Timber cladding system, vertical 'V' jointed 90mm wide. Service doors integrated to match. Timber equal to Spotted Gum in appearance. Natural colour with pigmented oil finish.
- CLD3 Cladding, Type 3: Terracotta facade tile system, 125mm horizontal profile, colour range varies to suit facade concept and surface finish varies between glazed and natural. Facade system equal to NBR Architectural Terracotta. Colours and finishes equal to TERRACOT natural and engobe colour range.
- CLD4 Cladding, Type 4: Metal cladding system, express jointed, with concealed essential service doors and louvers. Prefinished coating system. Colour and finish to match Alpolic 'Slate Grey' [MJ254-G30].
- CLD5 Cladding, Type 5: Metal cladding system, express jointed. Prefinished coating system. Colour and finish to match Alpolic 'Milk White' [M7774-G30].
- CLD6 Cladding, Type 6: Metal cladding system, express jointed. Prefinished coating system. Colour and finish to match Alpolic 'Charcoal' [M7991-G30].
- COF1 Concrete, Off Form Finish, Type 1: Natural concrete, smooth board finish. Penetrating clear matte sealer over.
- COF2 Concrete, Off Form Finish, Type 2: Natural concrete, textured rough sawn timber board finish. Colour natural grey concrete mix. Penetrating clear matte sealer over.

- CPC1 Concrete, Precast, Type 1: Smooth finish concrete wall elements. Colour 'lite & brile' concrete mix with white oxide pigment additive. Penetrating clear matte sealer over.
- CPC2 Concrete, Precast, Type 2: Decorative finish concrete wall elements, vertical square edged profiled form liner finish, 30mm spacing, 15mm depth equal to Reckit 2/77 'Tigris' profile. Colour equal to CPC1. Penetrating clear matte sealer over.
- CPC3 Concrete, Precast, Type 3: Decorative finish concrete wall elements, vertical radius profiled form liner finish, 30mm spacing, 32mm diam., 53mm depth equal to Reckit 2/94 'Orinoco' profile. Colour equal to CPC1. Penetrating clear matte sealer over.
- DP1 Decorative Pattern, Type 1: Custom decorative pattern integrated to finished glass surface to enhance privacy.

- FT1 Facade Glazing System, Type 1: Street Level Entry Foyer & Associated Spaces. Glass, clear. Framing system, aluminium, powder coat finish. Mechanical louvers integral to frame system. Matching aluminium cover plates to conceal slab edges and adjacent wall elements. Framing colour to match PCF1. Refer to Section J assessment for performance requirements. Reflectivity to be less than 20%.
- FT2 Facade Glazing System, Type 2: Decorative Bay Window Elements. Glass, clear. Front faced glazing system with shadow box glazing detail to conceal spandrel and slab edge elements. Aluminium, powder coat finish. Colour and finish to match PCF1. Refer to Section J assessment for performance requirements. Reflectivity to be less than 20%.
- FT3 Facade Glazing System, Type 3: Window Wall Elements. Glass, grey body tint. Framing system, aluminium, powder coat finish. Steel, paint finish, equal to PF3. Refer to Section J assessment for performance requirements. Reflectivity to be less than 20%.

- FT4 Facade Glazing System, Type 4: Infill Windows. Glass, clear. Framing system, aluminium, powder coat finish. Mechanical louvers integral to frame system. Matching aluminium cover plates to conceal slab edges and adjacent wall elements. Framing colour to match PCF1. Refer to Section J assessment for performance requirements. Reflectivity to be less than 20%.
- FT5 Facade Glazing System, Type 5: Infill Windows. Glass, grey body tint. Framing system, aluminium, with decorative 150mm projecting vertical fins and aluminium slab extension. Powder coat finish, colour to match PCF1. Refer to Section J assessment for performance requirements. Reflectivity to be less than 20%.
- GT1 Gate, Type 1: Decorative timber and steel entry gate. Timber equal to CLD2 material and finish. Steel, paint finish, equal to PF3.
- HR1 Handrail, Type 1: Decorative handrail to street level interface. 32mm diam. steel, bronze finish.

- LV1 Louvre Roof, Type 1: Fixed horizontal elliptical aluminium louvre system, 250mm profile. Angle set to shield view of plant from upper levels. Powder coat finish, colour and finish to match PCF1.
- MHR1 Metal Deck Roofing, Type 1: Standing seam profiled roofing system to match Lysaght 'Longline 305' profile. Colour to match Colorbond 'Monument'.
- PCF1 Powdercoat Finish, Type 1: Colour and finish to match Dulux - Fluorocel 'Xtreme Charcoal' satin [9647297M].
- PF1 Paint Finish, Type 1: Pigment stain paint system, equal to Keim Concretal Lasur System. Pigment. 30% concentration / opacity. Colour 'White / Weiss' [9872].
- PF2 Paint Finish, Type 2: Pigment stain paint system, equal to Keim Concretal Lasur System. Pigment. 70% concentration / opacity. Colour 'Black / Schwartz' [9008].

- PF3 Paint Finish, Type 3: Colour and finish to match Dulux - Micaceous Iron Oxide 'Mid Grey'.
- PV1 Paving, Type 1: Natural stone paving to external steps, landings and foyer areas. Refer to Landscape documentation for further information.
- SC1 Screen, Type 1: Fixed vertical elliptical aluminium louvre system, 250mm profile. Powder coat finish, colour and finish to match PCF1.
- SG1 Signage, Type 1: Integral building identification signage, surface fixed onto building facade. Bronze finish. Size and extent as per elevation drawings.
- VH1 Ventilation Hatch, Type 1: Aluminium ventilation hatch integrated with glazing. Aluminium, powder coat finish. Colour and finish to match PCF1.

Note Refer to Landscape documentation for public domain and landscape areas for further information regarding materials and finishes selection.

NOTES

THIS DRAWING IS COPYRIGHT © OF TURNER. NO REPRODUCTION WITHOUT PERMISSION. UNLESS NOTED OTHERWISE, THIS DRAWING IS NOT FOR CONSTRUCTION. ALL DIMENSIONS AND LEVELS ARE TO BE CHECKED ON SITE PRIOR TO THE COMMENCEMENT OF WORK. REPORT TURNER OF ANY DISCREPANCIES FOR CLARIFICATION BEFORE PROCEEDING WITH WORK. DRAWINGS ARE NOT TO BE SCALED. USE ONLY FIGURED DIMENSIONS. REFER TO CONSULTANT DOCUMENTATION FOR FURTHER INFORMATION.

CLIENT

Aboriginal Housing Company
83-123 Eveleigh Street Redfern NSW 2016 Australia

Rev	Date	Approved by	Revision Notes
N	29/05/17	DS	Issue for Consultant Coordination
P	02/06/17	DS	Issue for DA Submission - Client Approval
R	07/06/17	DS	Issue for DA Submission - DRP
S	09/06/17	DS	Issue for DA Submission - DoP

Project Title
Col James - Student Accommodation
83-123 Eveleigh Street Redfern NSW 2016 Australia

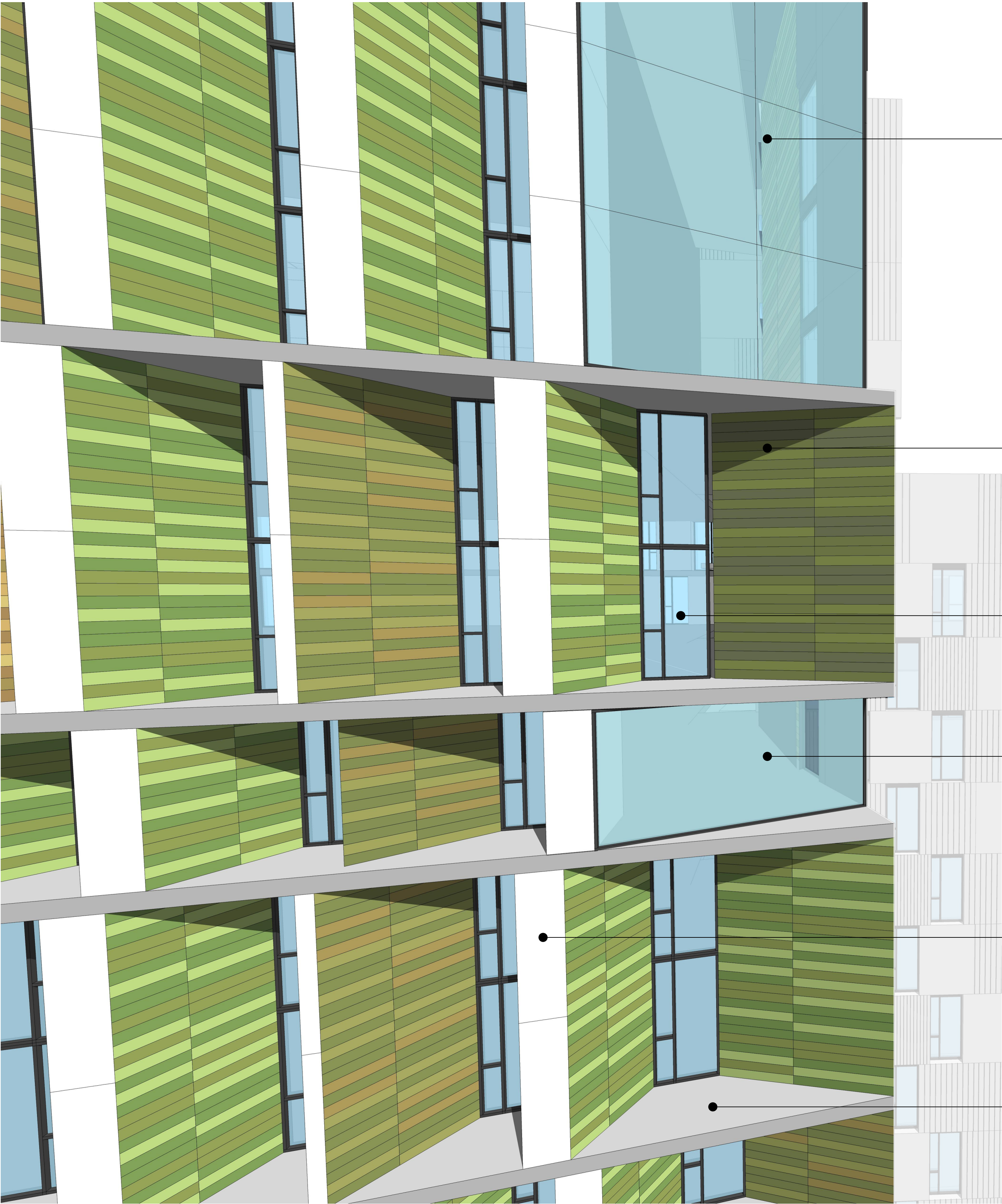
Drawing Title
Materials and Finishes
Main Entry & Public Domain Interface

Scale	Project No.	Drawn by	North
N1S	16107	CB	
Status	Dwg No.	Rev	
Development Application	DA-950-004	S	

TURNER

Level 7 **ONE** Oxford Street
Durlinghurst NSW 2010
AUSTRALIA

T +61 2 8668 0000
F +61 2 8668 0088
turnerstudio.com.au



FT2

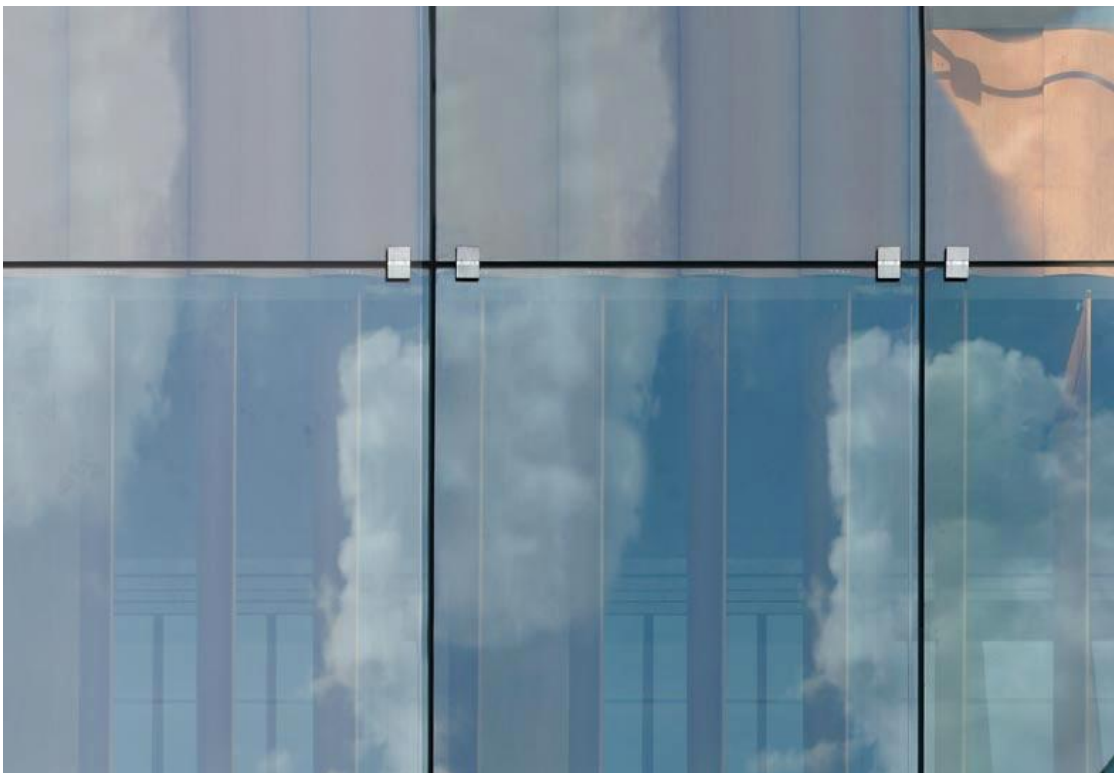
CLD3

FT4

FT2

CLD5

COF1



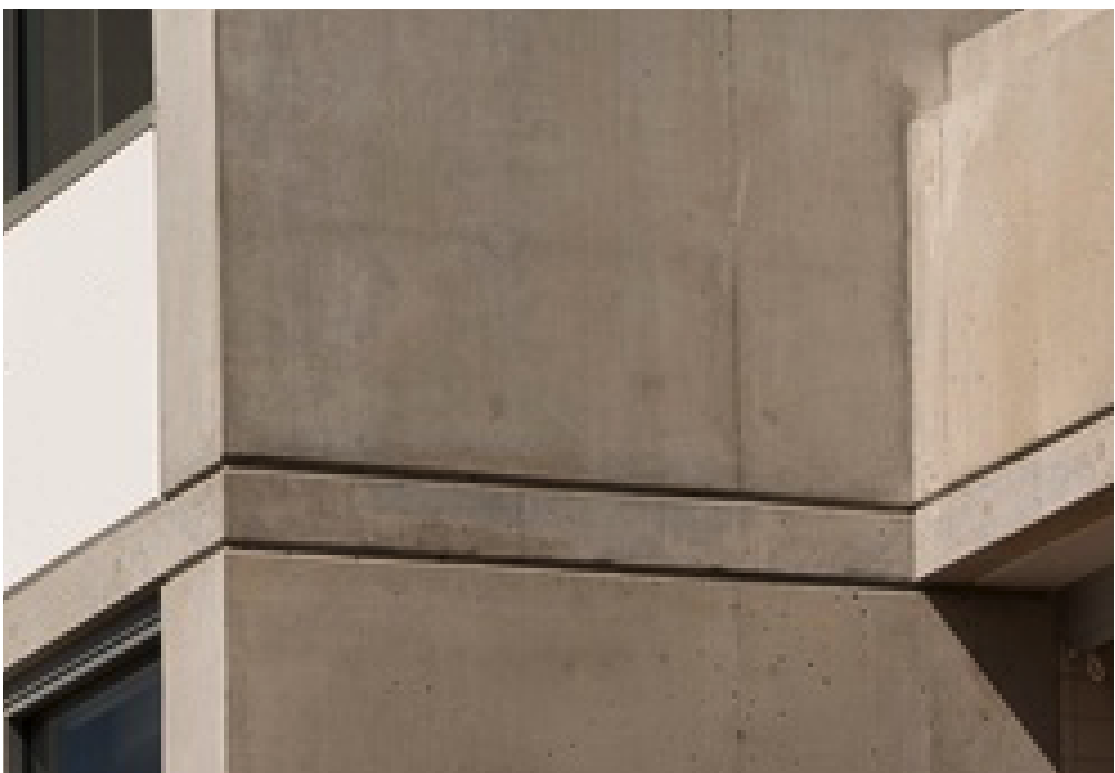
FT2



CLD3



CLD5



COF1

Legend

- ART1 Art Feature, Type 1: Painted soffit to main entry lobby.
- ART2 Art Feature, Type 2: Embossed feature symbol into precast panel.
- ART3 Art Feature, Type 3: Existing art wall, preserved.
- AWN1 Awning, Type 1: Folded steel awning with decorative motif laser cut into leading edge. Paint finish equal to PF3.
- BAL1 Balustrade, Type 1: Vertical 100 x 10 steel baluster, no top rail. Balusters angled at 90°. Powder coat finish, colour and finish to match PCF1.
- BAL2 Balustrade, Type 2: Frameless clear glass balustrade system with separate steel flat bar handrail / stanchion support behind. Colour and finish to match PCF1.
- CLD1 Cladding, Type 1: Stone cladding system, random length stretcher bond. Finish split face and / or exfoliate finish. Coursing height varies between 75 and 150mm. Random stone selection to match Hawksbury sandstone, Port Fairy Bluestone and off white / grey speckled granite.
- CLD2 Cladding, Type 2: Timber cladding system, vertical 'V' jointed 90mm wide. Service doors integrated to match. Timber equal to Spotted Gum in appearance. Natural colour with pigmented oil finish.
- CLD3 Cladding, Type 3: Terracotta tegula tile system, 175mm horizontal profile, colour range varies to suit facade concept and surface finish varies between glazed and natural. Facade system equal to NBR Architectural Terracotta. Colours and finishes equal to TERRA1 natural and engobe colour range.
- CLD4 Cladding, Type 4: Metal cladding system, express jointed, with concealed essential service doors and louvers. Prefinished coating system. Colour and finish to match Alpolic 'Slate Grey' [MJ254-G30].
- CLD5 Cladding, Type 5: Metal cladding system, express jointed. Prefinished coating system. Colour and finish to match Alpolic 'Milk White' [M7774-G30].
- CLD6 Cladding, Type 6: Metal cladding system, express jointed. Prefinished coating system. Colour and finish to match Alpolic 'Charcoal' [MJ7991-G30].
- COF1 Concrete, Off Form Finish, Type 1: Natural concrete, smooth board finish. Colour natural grey concrete mix. Penetrating clear matte sealer over.
- COF2 Concrete, Off Form Finish, Type 2: Natural concrete, textured rough sawn timber board finish. Colour natural grey concrete mix. Penetrating clear matte sealer over.
- CPC1 Concrete, Precast, Type 1: Smooth finish concrete wall elements. Colour 'lite & bribe' concrete mix with white oxide pigment additive. Penetrating clear matte sealer over.
- CPC2 Concrete, Precast, Type 2: Decorative finish concrete wall elements, vertical square edged profiled form liner finish, 30mm spacing, 15mm depth equal to Reckit 277 'Tigris' profile. Colour equal to CPC1. Penetrating clear matte sealer over.
- CPC3 Concrete, Precast, Type 3: Decorative finish concrete wall elements, vertical radius profiled form liner finish, 30mm spacing, 32mm diam., 53mm depth equal to Reckit 2/94 'Orinoco' profile. Colour equal to CPC1. Penetrating clear matte sealer over.
- DP1 Decorative Pattern, Type 1: Custom decorative pattern integrated to finished glass surface to enhance privacy.
- FT1 Façade Glazing System, Type 1: Street Level Entry Foyer & Associated Spaces Glass, clear. Framing system, front faced glazing system with decorative 300mm projecting vertical mullions. Aluminium, powder coat finish. Structural steel supports fully concealed. Colour and finish to match PCF1. Refer to Section J assessment for performance requirements. Reflectivity to be less than 20%.
- FT2 Façade Glazing System, Type 2: Decorative Bay Window Elements Glass, clear. Front faced glazing system with shadow box glazing detail to conceal spandrel and slab edge elements. Aluminium, powder coat finish. Colour and finish to match PCF1. Refer to Section J assessment for performance requirements. Reflectivity to be less than 20%.
- FT3 Façade Glazing System, Type 3: Window Wall Elements Glass, grey body tint. Front faced glazing system with shadow box glazing detail to conceal spandrel and slab edge elements. Aluminium, powder coat finish. Colour and finish to match PCF1. Refer to Section J assessment for performance requirements. Reflectivity to be less than 20%.
- FT4 Façade Glazing System, Type 4: Infill Windows Glass, clear. Framing system, aluminium, powder coat finish. Mechanical louvers integral to frame system. Matching aluminium cover plates to conceal slab edges and adjacent wall elements. Framing colour to match PCF1. Refer to Section J assessment for performance requirements. Reflectivity to be less than 20%.
- FT5 Façade Glazing System, Type 5: Infill Windows Glass, grey body tint. Framing system, aluminium, with decorative 150mm projecting vertical fins and aluminium slab extension. Powder coat finish, colour to match PCF1. Refer to Section J assessment for performance requirements. Reflectivity to be less than 20%.
- GT1 Gate, Type 1: Decorative timber and steel entry gate. Timber equal to CLD2 material and finish. Steel, paint finish, equal to PF3.
- HR1 Handrail, Type 1: Decorative handrail to street level interface. 32mm diam. steel, bronze finish.
- LV1 Louvre Roof, Type 1: Fixed horizontal elliptical aluminium louvre system, 250mm profile. Angle set to shield view of plant from upper levels. Powder coat finish, colour and finish to match PCF1.
- MDR1 Metal Deck Roofing, Type 1: Standing seam profiled roofing system to match Lysaght 'Longline 305' profile. Colour to match Colorbond 'Monument'.
- PCF1 Powdercoat Finish, Type 1: Colour and finish to match Dulux - Fluorocel 'Xtreme Charcoal' satin [9647297M].
- PF1 Paint Finish, Type 1: Pigment stain paint system, equal to Keim Concretal Lasur System. Pigment. 30% concentration / opacity. Colour 'White / Weiss' [9872].
- PF2 Paint Finish, Type 2: Pigment stain paint system, equal to Keim Concretal Lasur System. Pigment. 70% concentration / opacity. Colour 'Black / Schwartz' [9008].
- PF3 Paint Finish, Type 3: Colour and finish to match Dulux - Micaceous Iron Oxide 'Mid Grey'.
- PV1 Paving, Type 1: Natural stone paving to external steps, landings and foyer areas. Refer to Landscape documentation for further information.
- SC1 Screen, Type 1: Fixed vertical elliptical aluminium louvre system, 250mm profile. Powder coat finish, colour and finish to match PCF1.
- SG1 Signage, Type 1: Integral building identification signage, surface fixed onto building facade. Bronze finish. Size and extent as per elevation drawings.
- VH1 Ventilation Hatch, Type 1: Aluminium ventilation hatch integrated with glazing. Aluminium, powder coat finish. Colour and finish to match PCF1.
- Note Refer to Landscape documentation for public domain and landscape areas for further information regarding materials and finishes selection.

NOTES

THIS DRAWING IS COPYRIGHT © OF TURNER. NO REPRODUCTION WITHOUT PERMISSION. UNLESS NOTED OTHERWISE, THIS DRAWING IS NOT FOR CONSTRUCTION. ALL DIMENSIONS AND LEVELS ARE TO BE CHECKED ON SITE PRIOR TO THE COMMENCEMENT OF WORK. INFORM TURNER OF ANY DISCREPANCIES FOR CLARIFICATION BEFORE PROCEEDING WITH WORK. DRAWINGS ARE NOT TO BE SCALED. USE ONLY FIGURED DIMENSIONS. REFER TO CONSULTANT DOCUMENTATION FOR FURTHER INFORMATION.

DLCS Quality Endorsed Company ISO 9001:2015, Registration Number 23476
Notwithstanding to which Turners' 1995, APN 99-394-394-911

CLIENT

Aboriginal Housing Company
83-123 Eveleigh Street Redfern NSW 2016 Australia

Rev	Date	Approved by	Revision Notes
N	29/05/17	DS	Issue for Consultant Coordination
P	02/06/17	DS	Issue for DA Submission - Client Approval
R	07/06/17	DS	Issue for DA Submission - DRP
S	09/06/17	DS	Issue for DA Submission - DoP

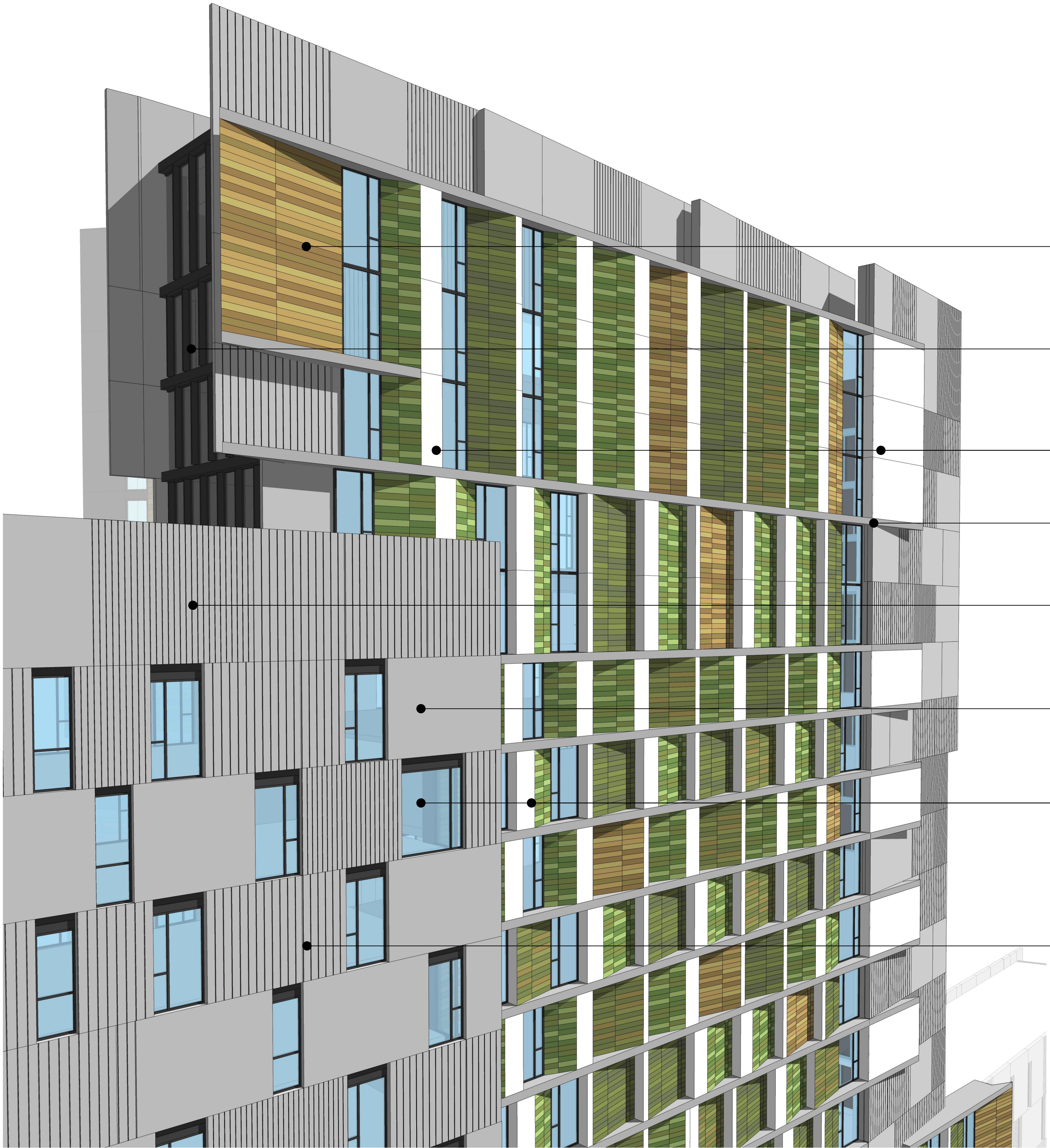
Project Title
Col James - Student Accommodation
83-123 Eveleigh Street Redfern NSW 2016 Australia

Drawing Title
Materials and Finishes
Eveleigh Street - High Levels

Scale	Project No.	Drawn by	North
NTS	16107	CB	
Status	Dwg No.	Rev	
Development Application	DA-950-005	S	

TURNER

Level 7 **ONE** Oxford Street
Durlinghurst NSW 2010
AUSTRALIA
T +61 2 8668 0000
F +61 2 8668 0088
turnerstudio.com.au



CLD3

FT5

CLD5

COF1

CPC3

CPC1

FT4

CPC2



CLD3



CLD5



CPC3



COF1

Legend

- (ART1) Art Feature, Type 1: Painted soffit to main entry lobby.
- (ART2) Art Feature, Type 2: Embossed feature symbol into precast panel.
- (ART3) Art Feature, Type 3: Existing art wall, preserved.
- (AWN) Awning, Type 1: Folded steel awning with decorative motif laser cut into leading edge. Paint finish equal to PF3.
- (BAL1) Balustrade, Type 1: Vertical 100 x 10 steel baluster, no top rail. Balusters angled at 90°. Powder coat finish, colour and finish to match PCF1.
- (BAL2) Balustrade, Type 2: Frameless clear glass balustrade system with separate steel flat bar handrail / stanchion support behind. Colour and finish to match PCF1.
- (CLD1) Cladding, Type 1: Stone cladding system, random length stretcher bond. Finish split face and / or exfoliate finish. Coursing height varies between 75 and 150mm. Random stone selection to match Hawksbury sandstone, Port Fairy Bluestone and off white / grey speckled granite.
- (CLD2) Cladding, Type 2: Timber cladding system, vertical 'V' jointed 90mm wide. Service doors integrated to match. Timber equal to Spotted Gum in appearance. Natural colour with pigmented oil finish.
- (CLD3) Cladding, Type 3: Terracotta facade tile system, 125mm horizontal profile, colour range varies to suit facade concept and surface finish varies between glazed and natural. Facade system equal to N&K Architectural Terracotta. Colours and finishes equal to TERRACOT natural and engobe colour range.
- (CLD4) Cladding, Type 4: Metal cladding system, express jointed, with concealed essential service doors and louvers. Prefinished coating system. Colour and finish to match Alpolic 'Slate Grey' (MJ254-G30).
- (CLD5) Cladding, Type 5: Metal cladding system, express jointed. Prefinished coating system. Colour and finish to match Alpolic 'Milk White' (M7774-G30).
- (CLD6) Cladding, Type 6: Metal cladding system, express jointed. Prefinished coating system. Colour and finish to match Alpolic 'Charcoal' (M7991-G30).
- (COP1) Concrete, Off Form Finish, Type 1: Natural concrete, smooth board finish. Colour natural grey concrete mix. Penetrating clear matte sealer over.
- (COP2) Concrete, Off Form Finish, Type 2: Natural concrete, textured rough sawn timber board finish. Colour natural grey concrete mix. Penetrating clear matte sealer over.

- (CPC1) Concrete, Precast, Type 1: Smooth finish concrete wall elements. Colour 'lite & bribe' concrete mix with white oxide pigment additive. Penetrating clear matte sealer over.
- (CPC2) Concrete, Precast, Type 2: Decorative finish concrete wall elements, vertical square edged profiled form liner finish, 30mm spacing, 15mm depth equal to Reckit 2/77 'Tigris' profile. Colour equal to CPC1. Penetrating clear matte sealer over.
- (CPC3) Concrete, Precast, Type 3: Decorative finish concrete wall elements, vertical radius profiled form liner finish, 30mm spacing, 32mm diam., 53mm depth equal to Reckit 2/94 'Orinoco' profile. Colour equal to CPC1. Penetrating clear matte sealer over.
- (DPR) Decorative Pattern, Type 1: Custom decorative pattern integrated to finished glass surface to enhance privacy.

- (FT1) Facade Glazing System, Type 1: Street Level Entry Foyer & Associated Spaces Glass, clear. Framing system, front faced glazing system with decorative 300mm projecting vertical mullions. Aluminium, powder coat finish. Structural steel supports fully concealed. Colour and finish to match PCF1. Refer to Section J assessment for performance requirements. Reflectivity to be less than 20%.
- (FT2) Facade Glazing System, Type 2: Decorative Bay Window Elements Glass, clear. Front faced glazing system with shadow box glazing detail to conceal spandrel and slab edge elements. Aluminium, powder coat finish. Colour and finish to match PCF1. Refer to Section J assessment for performance requirements. Reflectivity to be less than 20%.
- (FT3) Facade Glazing System, Type 3: Window Wall Elements Glass, grey body tint. Front faced glazing system with shadow box glazing detail to conceal spandrel and slab edge elements. Aluminium, powder coat finish. Colour and finish to match PCF1. Refer to Section J assessment for performance requirements. Reflectivity to be less than 20%.

- (FT4) Facade Glazing System, Type 4: Infill Windows Glass, clear. Framing system, aluminium, powder coat finish. Mechanical louvers integral to frame system. Matching aluminium cover plates to conceal slab edges and adjacent wall elements. Framing colour to match PCF1. Refer to Section J assessment for performance requirements. Reflectivity to be less than 20%.
- (FT5) Facade Glazing System, Type 5: Infill Windows Glass, grey body tint. Framing system, aluminium, with decorative 150mm projecting vertical fins and aluminium slab extension. Powder coat finish, colour to match PCF1. Refer to Section J assessment for performance requirements. Reflectivity to be less than 20%.
- (G11) Gate, Type 1: Decorative timber and steel entry gate. Timber equal to CLD2 material and finish. Steel, paint finish, equal to PF3.
- (HR) Handrail, Type 1: Decorative handrail to street level interface. 32mm diam. steel, bronze finish.

- (LVR) Louvre Roof, Type 1: Fixed horizontal elliptical aluminium louvre system, 250mm profile. Angle set to shield view of plant from upper levels. Powder coat finish, colour and finish to match PCF1.
- (MDR) Metal Deck Roofing, Type 1: Standing seam profiled roofing system to match Lysaght 'Longline 305' profile. Colour to match Colorbond 'Monument'.
- (PCF1) Powdercoat Finish, Type 1: Colour and finish to match Dulux - Fluorocel 'Xtreme Charcoal' satin (9647297M).
- (PF1) Paint Finish, Type 1: Pigment stain paint system, equal to Keim Concrete Lasur System.Pigment. 30% concentration / opacity. Colour 'White / Weiss' (9872).
- (PF2) Paint Finish, Type 2: Pigment stain paint system, equal to Keim Concrete Lasur System.Pigment. 70% concentration / opacity. Colour 'Black / Schwartz' (9008).

- (PF3) Paint Finish, Type 3: Colour and finish to match Dulux - Micaceous Iron Oxide 'Mid Grey'.
- (PVI) Paving, Type 1: Natural stone paving to external steps, landings and foyer areas. Refer to Landscape documentation for further information.
- (SCI) Screen, Type 1: Fixed vertical elliptical aluminium louvre system, 250mm profile. Powder coat finish, colour and finish to match PCF1.
- (SG1) Signage, Type 1: Integral building identification signage, surface fixed onto building facade. Bronze finish. Size and extent as per elevation drawings.
- (VH) Ventilation Hatch, Type 1: Aluminium ventilation hatch integrated with glazing. Aluminium, powder coat finish. Colour and finish to match PCF1.

Note Refer to Landscape documentation for public domain and landscape areas for further information regarding materials and finishes selection.

NOTES

THIS DRAWING IS COPYRIGHT © OF TURNER. NO REPRODUCTION WITHOUT PERMISSION. UNLESS NOTED OTHERWISE, THIS DRAWING IS NOT FOR CONSTRUCTION. ALL DIMENSIONS AND LEVELS ARE TO BE CHECKED ON SITE PRIOR TO THE COMMENCEMENT OF WORK. REPORT TURNER OF ANY DISCREPANCIES FOR CLARIFICATION BEFORE PROCEEDING WITH WORK. DRAWINGS ARE NOT TO BE SCALED. USE ONLY FIGURED DIMENSIONS. REFER TO CONSULTANT DOCUMENTATION FOR FURTHER INFORMATION.

CLIENT

Aboriginal Housing Company
83-123 Eveleigh Street Redfern NSW 2016 Australia

Rev	Date	Approved by	Revision Notes
N	29/05/17	DS	Issue for Consultant Coordination
P	02/06/17	DS	Issue for DA Submission - Client Approval
R	07/06/17	DS	Issue for DA Submission - DRP
S	09/06/17	DS	Issue for DA Submission - DoP

Project Title
Col James - Student Accommodation
83-123 Eveleigh Street Redfern NSW 2016 Australia

Drawing Title
Materials and Finishes
Facade to Railway

Scale	Project No.	Drawn by	North
N15	16107	CB	
Status	Dwg No.	Rev	
Development Application	DA-950-006	S	

TURNER

Level 7 **ONE** Oxford Street
Durlinghurst NSW 2010
AUSTRALIA

T +61 2 8668 0000
F +61 2 8668 0088
turnerstudio.com.au