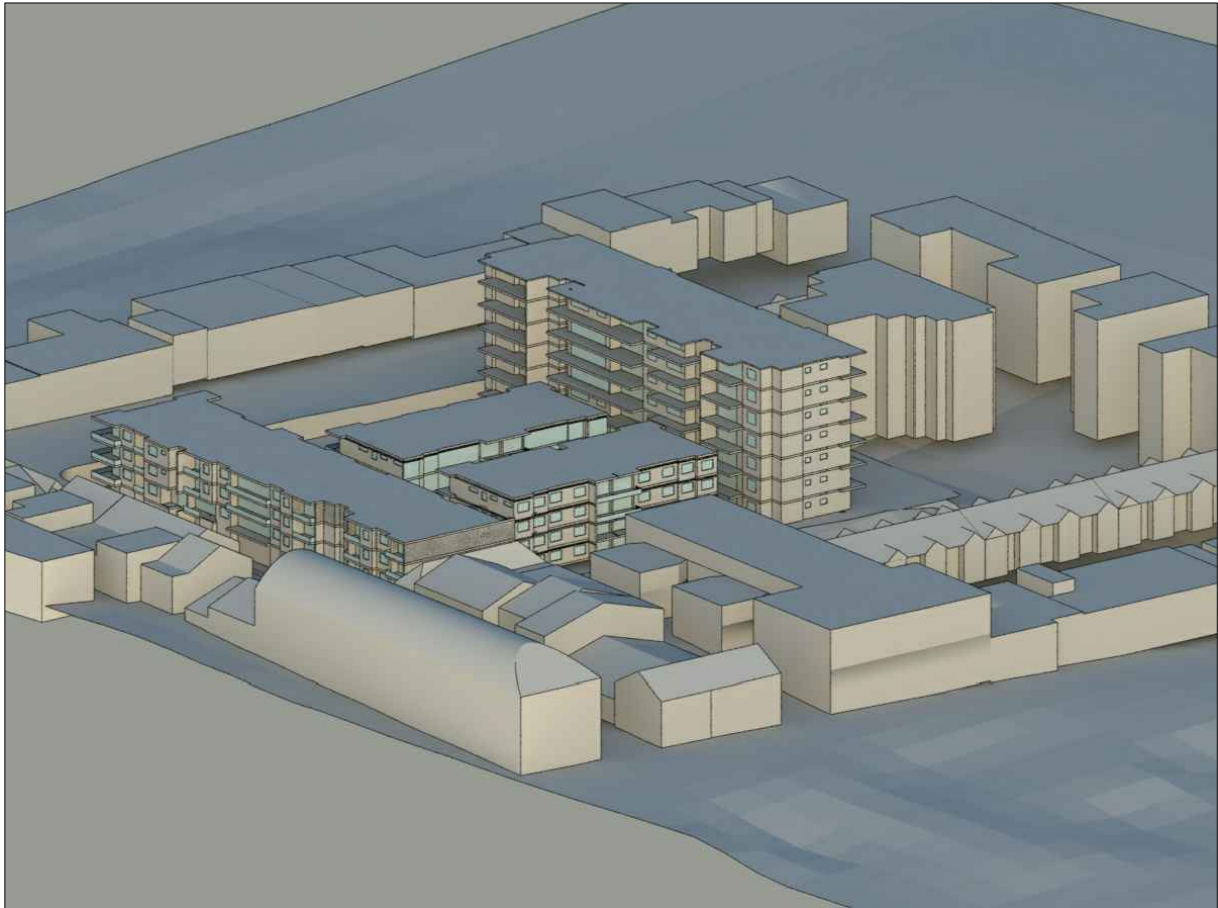
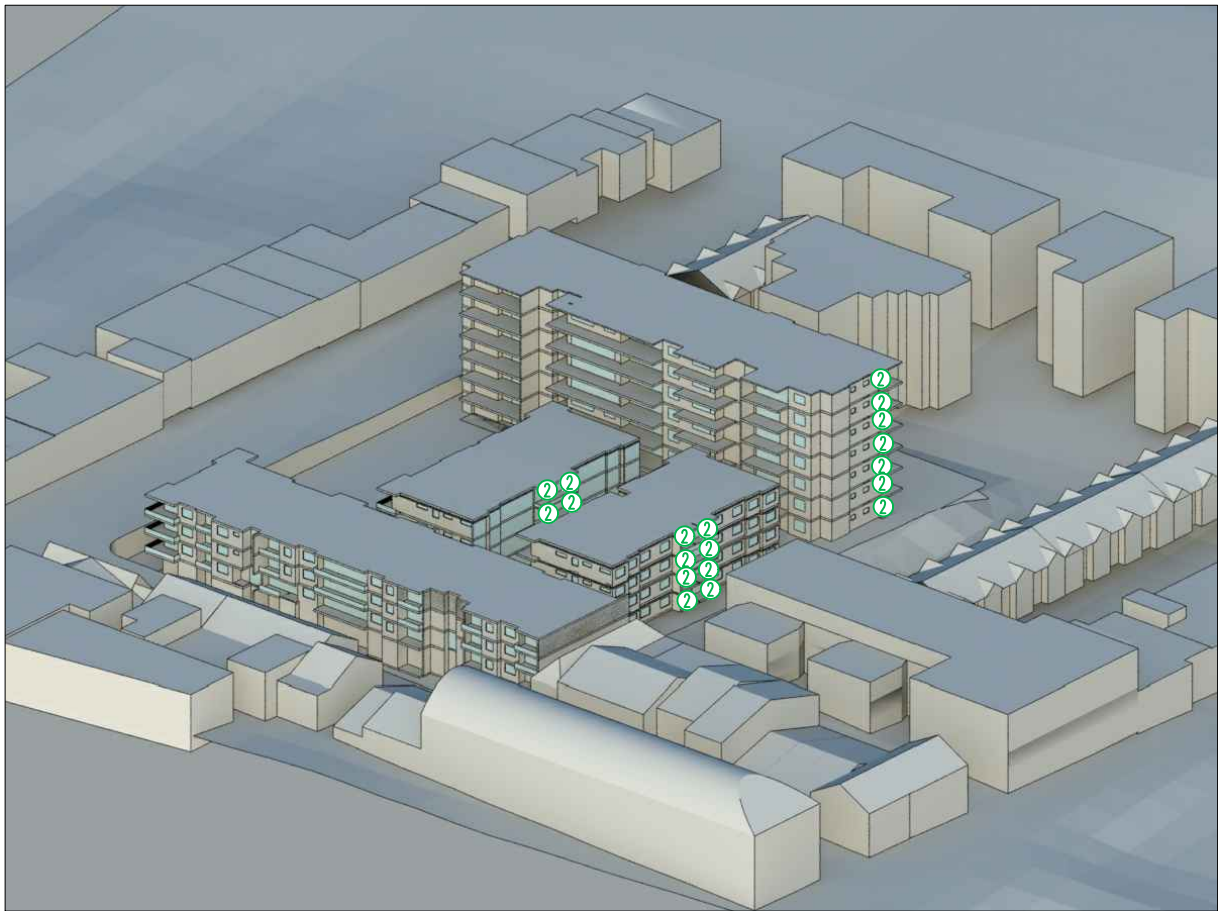


JUNE 21 @ 1PM -78 UNITS COMPLIANT



JUNE 21 @ 3PM -97 UNITS COMPLIANT



JUNE 21 @ 2PM - 97 UNITS COMPLIANT

TOTAL DEVELOPMENT	TOTAL UNITS: 158	COMPLIANT	%	✗
SEPP65 Requirement: 70% (112UNITS) two hours solar access		97 UNITS	61%	

- ①

start
- ①

1 hour solar access
- ②

2 hour solar access
- ③

3 hour solar access
- ④

4 hours solar access
- ⑤

5 hours solar access
- ⑥

6 hours solar access

70% of the units of the proposed development achieve a minimum 2 hours of solar on 21st of June according to the following list of measures :

- every hour of solar is indicated on the drawing by a number which correspond to the number of hours of solar that the unit achieve, as per table on the side.

- the unit is getting solar when it reaches number ② being when the sun hits either the glass of the main living room and private open space.

	TOTAL UNITS	COMPLIANT	%	✗
BUILDING A	67	42	62.6%	
	TOTAL UNITS	COMPLIANT	%	✗
BUILDING B	24	15	62.5%	
	TOTAL UNITS	COMPLIANT	%	✗
BUILDING C	22	11	50.0%	
	TOTAL UNITS	COMPLIANT	%	✗
BUILDING D	45	29	64.4%	

SOLAR DIAGRAM JUNE 21st - APPROVED PROJECT